

Submit 1 Copy To Appropriate District Office  
District I - (575) 393-6161  
1625 N. French Dr., Hobbs, NM 88240  
District II - (575) 748-1283  
811 S. First St., Artesia, NM 88210  
District III - (505) 334-6178  
1000 Rio Brazos Rd., Aztec, NM 87410  
District IV - (505) 476-3460  
1220 S. St. Francis Dr., Santa Fe, NM 87505

State of New Mexico  
Energy, Minerals and Natural Resources

OIL CONSERVATION DIVISION  
1220 South St. Francis Dr.  
Santa Fe, NM 87505

Form C-103  
Revised August 1, 2011

<b>SUNDRY NOTICES AND REPORTS ON WELLS</b> (DO NOT USE THIS FORM FOR PROPOSALS TO DRILL OR TO DEEPEN OR PLUG BACK TO A DIFFERENT RESERVOIR. USE "APPLICATION FOR PERMIT" (FORM C-101) FOR SUCH PROPOSALS.)		WELL API NO. <b>30-045-24958</b>
1. Type of Well: Oil Well <input type="checkbox"/> Gas Well <input checked="" type="checkbox"/> Other		5. Indicate Type of Lease STATE <input type="checkbox"/> FEE <input type="checkbox"/>
2. Name of Operator <b>BP America Production Company</b>		6. State Oil & Gas Lease No. <b>Federal Lease</b>
3. Address of Operator <b>P.O. Box 3092 Houston, TX 77253-3092</b>		7. Lease Name or Unit Agreement Name <b>Gallegos Canyon Unit</b>
4. Well Location Unit Letter <u>  P  </u> : <u>  1100'  </u> feet from the <u>  South  </u> line and <u>  800'  </u> feet from the <u>  East  </u> line Section <u>  35  </u> Township <u>  29N  </u> Range <u>  13W  </u> NMPM County <u>  San Juan  </u>		8. Well Number <b>86E</b>
11. Elevation (Show whether DR, RKB, RT, GR, etc.) <u>  5725' GL  </u>		9. OGRID Number <b>000778</b>
		10. Pool name or Wildcat <b>Basin Dakota</b>

12. Check Appropriate Box to Indicate Nature of Notice, Report or Other Data

NOTICE OF INTENTION TO:

PERFORM REMEDIAL WORK ☐ PLUG AND ABANDON ☐  
TEMPORARILY ABANDON ☐ CHANGE PLANS ☐  
PULL OR ALTER CASING ☐ MULTIPLE COMPL ☐  
DOWNHOLE COMMINGLE ☐

OTHER: Recompletion /Downhole commingle ☒

SUBSEQUENT REPORT OF:

REMEDIAL WORK ☐ ALTERING CASING ☐  
COMMENCE DRILLING OPNS. ☐ P AND A ☐  
CASING/CEMENT JOB ☐  
**RCVD JAN 3 '14  
OIL CONS. DIV.  
DIST. 3**

OTHER: ☐

13. Describe proposed or completed operations. (Clearly state all pertinent details, and give pertinent dates, including estimated date of starting any proposed work). SEE RULE 19.15.7.14 NMAC. For Multiple Completions: Attach wellbore diagram of proposed completion or recompletion.

**BP America Production Company requests permission to re-complete into the Basin Mancos by setting a CIBP over the Basin Dakota, then remove the CIBP & downhole commingle production with the existing Basin Dakota.**

The DK (71599) & the Basin Mancos (97232) pools are pre-approved for DHC per NMOCD Case No. 12520; Order No. R-11567 effective 04/26/2001. Although the interest owners are not identical between these two pools, this same order established approval for subsequent applications for DHC of production in wellbores within the GCU without notice to the unit interest owners. Therefore, no additional notification is required prior to DHC approval.

Production is proposed to be allocated based on the subtraction method using the DK projected future decline. That production will serve as a base for production subtracted from the total production for the commingled well. The balance of the production will be attributed to the Basin Mancos.

Commingling production downhole in the subject well from the proposed pools will not reduce the value of the total remaining production.

Please see attached DHC procedure, wellbore schematics & C-102 plat. BLM notified via 3160-5 form for lease NMSF078926

Spud Date:   12/23/1981   Rig Release Date:                      **DHC 3859 A2**

**\* Prior to Perforating Provide CDL to AGENCIES for Review \***

I hereby certify that the information above is true and complete to the best of my knowledge and belief.

SIGNATURE   Toya Colvin   TITLE   Regulatory Analyst   DATE   12/30/13  

Type or print name   Toya Colvin   E-mail address:   Toya.Colvin@bp.com   PHONE:   281-366-7148    
State Use Only

APPROVED BY:                      TITLE   Deputy Oil & Gas Inspector, District #3   DATE   JAN 15 2014    
Conditions of Approval (if any):



## BP - San Juan Wellwork Procedure

**GCU 86E**  
30-045-24958

Unit letter P SEC. 35, T29N, R13W  
San Juan, NM  
Dakota Formation

The purpose of this procedure is to outline the completion of the Pinon trend in the Gallup (Mancos) and commingling with the currently producing Dakota.

### **Basic Job Procedure:**

1. Pull tubing
2. Set CIBP at +/-6,050'
3. Pressure test CIBP and casing to verify integrity
4. Run CBL (segmented) from the CIBP to surface.
5. Dump +/-20' of sand on CIBP
6. MIT wellbore
7. Recomplete to the Gallup (Mancos) with the following proposed perforations: +/-5590 - 5610'
8. Commingle well and cleanout/deepen PBTD to +/-5' above the 4.5" casing shoe at +/-6,342'
9. Land tubing at +/-6,293' and return well to production

### **Policy Reminder**

Any changes to the written procedure requires an approved MoC  
~~MoC (except BoD/SoR) approvals during execution have been delegated to the OTL~~

# Current Wellbore Diagram

**GCU 86E**

Current Wellbore

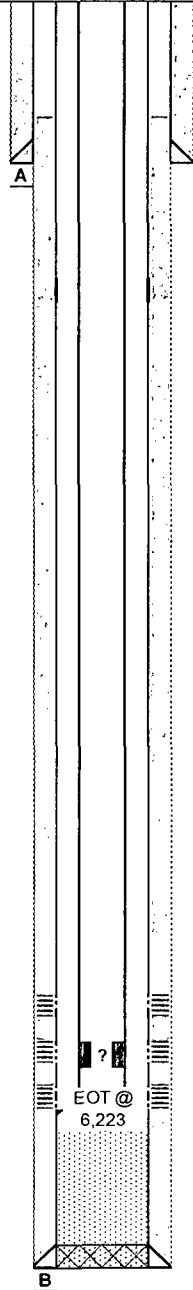


<b>8.625" Csg TOC: Surface</b>
300 sx Class B neat

<b>4.5" Csg TOC: 300'</b>
Stage 1: 440 sx class B 50/50 POZ, tail with 100 sx Class B neat; Stage 2: 1180 sx Class B 65/35 POZ tail with 100 sx Class B neat

Deviation Survey	
Depth	Deviation
335	1
830	0.75
2196	0.5
2479	1
4485	0.75
6158	0.25



DV tool @ 4356'

Seating Nipple @ 6163'

Fill tagged at 6194' on 6-8-2011

\*End of Prod Casing @ 6345'

## DAKOTA Perfs

6104- 6124

6134- 6152

6190- 6240

2 SPF, 176 shots, 0.38"

Frac all Dakota perfs w/ 133,000 gal & 358k # 20/40 sand

FIELD	San Juan South		
WELL	GCU 86E		
COUNTY	San Juan, New Mexico		
API No.	30-045-24958		
RKB ELEVATION	5,738	SEC:	35
GL ELEVATION	5,726	TOWN:	29N
RKB-GL	12	RANGE:	13W
Lat: 36.6787436		Long: -108.1693285	

DIRECTIONAL DATA			
MAX ANGLE	1.000	THRU	2,479
KOP	N/A	TYPE	Vertical

PRODUCTION DETAIL		
	TUBING	Prod Casing
SIZE	2 3/8 "	4. 1/2 "
WEIGHT	4.7ppf	10.5ppf
GRADE	J-55	J-55
DEPTH	6,223'	6,345'
THREAD	8R EUE	?
I.D.	1.995"	4.052"
DRIFT	1.901"	3.927"
BURST	7700 PSI	4790 PSI
COLLAPSE	8100 PSI	4010 PSI
CAPACITY	0.00387 bbl/ft	0.01595 bbl/ft
# JOINTS	Red Data is Assumed	

PRODUCTION ASSEMBLY DETAIL				
#	O. D.	I. D.	LENGTH	Description
	IN	IN	FT	
1	2.375	?	?	Seating Nipple
2	?	?	?	?
3				
4				
5				
6				
7				
8				
9				
10				
11				
12				

CASING DETAIL					
#	SIZE	WGHT	GRADE	THREAD	DEPTH
A	8 5/8	24	?	?	330
B	4 1/2	10.5ppf	J-55	?	6,345
C					
D					
E					
F					
G					

PRESSURE DATA	
<b>BOTTOM HOLE PRESSURE</b>	534 PSI
Estimated	
<b>BOTTOM HOLE TEMPERATURE</b>	153°F
Calculated	

Prepared by: Jacob Wendte Date: 26-Dec-2013

<b>Plug Back Total Depth:</b>	6296	MD	6296	TVD		<b>Spud:</b> 12-23-1981	<b>Completed:</b> 1-30-1982	<b>Last Workover:</b>
<b>Total Depth:</b>	6345	MD	6345	TVD				

# Proposed Wellbore Diagram

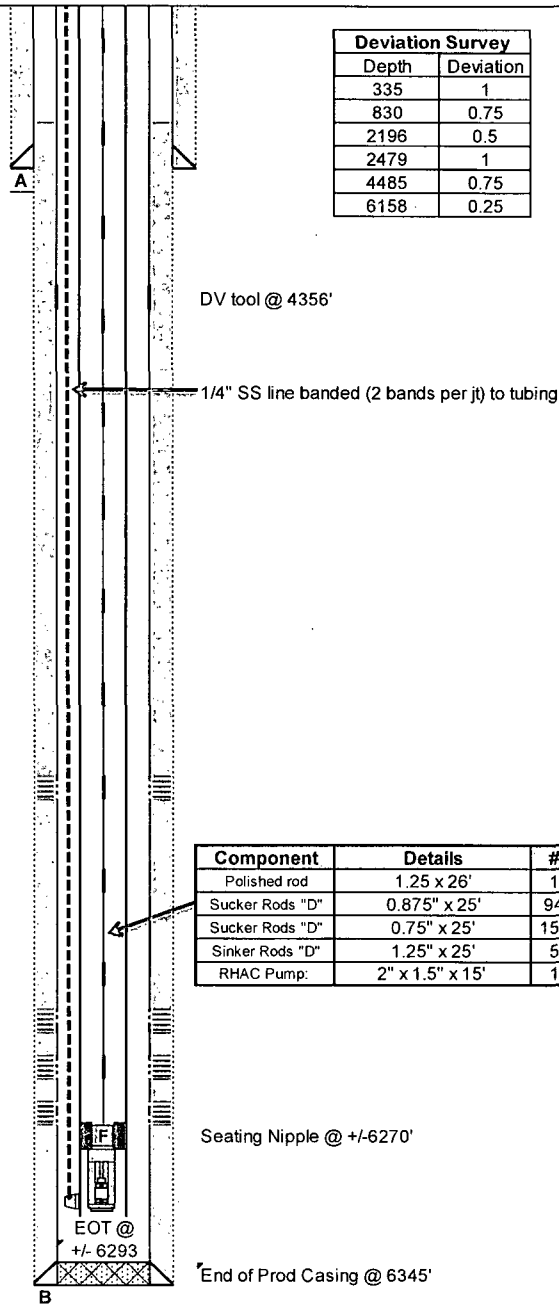
## GCU 86E

## Proposed Wellbore



<b>8.625" Csg TOC: Surface</b>
300 sx Class B neat
<b>4.5" Csg TOC: 300'</b>
Stage 1: 440 sx class B 50/50 POZ tail with 100 sx Class B neat; Stage 2: 1180 sx Class B 65/35 POZ tail with 100 sx Class B neat

Deviation Survey	
Depth	Deviation
335	1
830	0.75
2196	0.5
2479	1
4485	0.75
6158	0.25



### Gallup Perfs

5590- 5610

### DAKOTA Perfs

6104- 6124

6134- 6152

6190- 6240

2 SPF, 176 shots, 0.38"

Frac all Dakota perfs w/ 133,000 gal & 358k # 20/40 sand

Component	Details	#
Polished rod	1.25 x 26'	1
Sucker Rods "D"	0.875" x 25'	94
Sucker Rods "D"	0.75" x 25'	152
Sinker Rods "D"	1.25" x 25'	5
RHAC Pump	2" x 1.5" x 15'	1

Seating Nipple @ +/-6270'

End of Prod Casing @ 6345'

FIELD	San Juan South		
WELL	GCU 86E		
COUNTY	San Juan, New Mexico		
API No.	30-045-24958		
RKB ELEVATION	5,738	SEC	35
GL ELEVATION	5,726	TOWN	29N
RKB-GL	12	RANGE	13W
Lat 36.6787436		Long: -108.1693285	

DIRECTIONAL DATA			
<b>MAX ANGLE</b>	1.000	<b>THRU</b>	2,479
<b>KOP</b>	N/A	<b>TYPE</b>	Vertical

PRODUCTION DETAIL		
	TUBING	Prod Casing
SIZE	2 3/8 "	4 1/2 "
WEIGHT	4.7ppf	10.5ppf
GRADE	J-55	J-55
DEPTH	+/- 6293	6,345'
THREAD	8R EUE	?
I.D.	1.995"	4.052"
DRIFT	1.901"	3.927"
BURST	7700 PSI	4790 PSI
COLLAPSE	8100 PSI	4010 PSI
CAPACITY	0.00387 bbl/ft	0.01595 bbl/ft
# JOINTS		Red Data is Assumed

PRODUCTION ASSEMBLY DETAIL				
#	O. D.	I. D.	LENGTH	Description
	IN	IN	FT	
1	2.375	1.780	1.00	F-Nipple
2	2.375	1.995	16.00	Pup it w/0.25" weep hole
3	2.875	1.995	1.00	Injection Mandrel
4	2.375	1.995	4.00	4' pup
5	2.375	1.995	1.000	Mule Shoe
6				
7				
8				
9				
10				
11				
12				

CASING DETAIL					
#	SIZE	WGHT	GRADE	THREAD	DEPTH
A	8 5/8	24	?	?	330
B	4 1/2	10.5ppf	J-55	?	6,345
C					
D					
E					
F					
G					

PRESSURE DATA	
<b>BOTTOM HOLE PRESSURE</b>	1440 PSI
Estimated	
<b>BOTTOM HOLE TEMPERATURE</b>	153°F
Calculated	

Prepared by: Jacob Wendte Date: 26-Dec-2013

<b>Plug Back Total Depth:</b>	6337	MD	6337	TVD	Spud: 12-23-1981 Completed: 1-30-1982 Last Workover:
<b>Total Depth:</b>	6345	MD	6345	TVD	

**District I**  
1625 N. French Dr., Hobbs, NM 88240  
**District II**  
1301 W. Grand Avenue, Artesia, NM 88210  
**District III**  
1000 Rio Brazos Rd., Aztec, NM 87410  
**District IV**  
1220 S. St. Francis Dr., Santa Fe, NM 87505

State of New Mexico  
Energy, Minerals & Natural Resources Department  
**OIL CONSERVATION DIVISION**  
1220 South St. Francis Dr.  
Santa Fe, NM 87505

Form C-102  
Revised July 16, 2010  
Submit one copy to appropriate  
District Office  
☐ AMENDED REPORT

**WELL LOCATION AND ACREAGE DEDICATION PLAT**

<sup>1</sup> API Number <b>30-045-24958</b>	<sup>2</sup> Pool Code <b>71599</b>	<sup>3</sup> Pool Name <b>Basin Dakota</b>
<sup>4</sup> Property Code <b>000570</b>	<sup>5</sup> Property Name <b>Gallegos Canyon Unit</b>	<sup>6</sup> Well Number <b>86E</b>
<sup>7</sup> OGRID No. <b>000778</b>	<sup>8</sup> Operator Name <b>BP America Production Company</b>	<sup>9</sup> Elevation <b>5725</b>

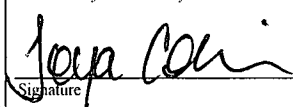
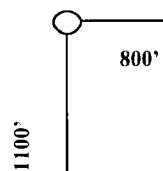
<sup>10</sup> Surface Location

UL or lot no. <b>P</b>	Section <b>35</b>	Township <b>29N</b>	Range <b>13W</b>	Lot Idn	Feet from the <b>1100</b>	North/South line <b>South</b>	Feet from the <b>800</b>	East/West line <b>East</b>	County <b>San Juan</b>
---------------------------	----------------------	------------------------	---------------------	---------	------------------------------	----------------------------------	-----------------------------	-------------------------------	---------------------------

<sup>11</sup> Bottom Hole Location If Different From Surface

UL or lot no.	Section	Township	Range	Lot Idn	Feet from the	North/South line	Feet from the	East/West line <b>RCVD JAN 3 '14</b>	County
<sup>12</sup> Dedicated Acres <b>320</b>	<sup>13</sup> Joint or Infill	<sup>14</sup> Consolidation Code	<sup>15</sup> Order No. <b>R-11567</b>	<b>OIL CONS. DIV. DIST. 3</b>					

No allowable will be assigned to this completion until all interests have been consolidated or a non-standard unit has been approved by the division.

<b>16</b>						<b>17 OPERATOR CERTIFICATION</b> <i>I hereby certify that the information contained herein is true and complete to the best of my knowledge and belief, and that this organization either owns a working interest or unleased mineral interest in the land including the proposed bottom hole location or has a right to drill this well at this location pursuant to a contract with an owner of such a mineral or working interest, or to a voluntary pooling agreement or a compulsory pooling order heretofore entered by the division.</i>  Signature Date <b>12/30/13</b> Toya Colvin Printed Name Toya.Colvin@bp.com E-mail Address
						<b>18 SURVEYOR CERTIFICATION</b> <i>I hereby certify that the well location shown on this plat was plotted from field notes of actual surveys made by me or under my supervision, and that the same is true and correct to the best of my belief.</i>
						Date of Survey Signature and Seal of Professional Surveyor:  Previously Filed
						Certificate Number

District I  
1625 N. French Dr., Hobbs, NM 88240  
District II  
1301 W. Grand Avenue, Artesia, NM 88210  
District III  
1000 Rio Brazos Rd., Aztec, NM 87410  
District IV  
1220 S. St. Francis Dr., Santa Fe, NM 87505

State of New Mexico  
Energy, Minerals & Natural Resources Department  
**OIL CONSERVATION DIVISION**  
1220 South St. Francis Dr.  
Santa Fe, NM 87505

Form C-102  
Revised July 16, 2010  
Submit one copy to appropriate  
District Office  
☐ AMENDED REPORT

**WELL LOCATION AND ACREAGE DEDICATION PLAT**

<sup>1</sup> API Number <b>30-045-24958</b>	<sup>2</sup> Pool Code <b>97232</b>	<sup>3</sup> Pool Name <b>Basin Mancos</b>
<sup>4</sup> Property Code <b>000570</b>	<sup>5</sup> Property Name <b>Gallegos Canyon Unit</b>	<sup>6</sup> Well Number <b>86E</b>
<sup>7</sup> OGRID No. <b>000778</b>	<sup>8</sup> Operator Name <b>BP America Production Company</b>	<sup>9</sup> Elevation <b>5725</b>

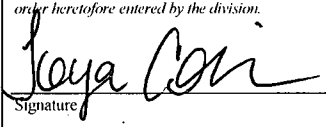
<sup>10</sup> Surface Location

UL or lot no. <b>P</b>	Section <b>35</b>	Township <b>29N</b>	Range <b>13W</b>	Lot Idn	Feet from the <b>1100</b>	North/South line <b>South</b>	Feet from the <b>800</b>	East/West line <b>East</b>	County <b>San Juan</b>
---------------------------	----------------------	------------------------	---------------------	---------	------------------------------	----------------------------------	-----------------------------	-------------------------------	---------------------------

<sup>11</sup> Bottom Hole Location If Different From Surface

UL or lot no.	Section	Township	Range	Lot Idn	Feet from the	North/South line	Feet from the	East/West line	County
								<b>RCVD JAN 3 '14</b>	
<sup>12</sup> Dedicated Acres <b>320</b>	<sup>13</sup> Joint or Infill	<sup>14</sup> Consolidation Code	<sup>15</sup> Order No. <b>R-11567</b>	<b>OIL CONS. DIV. DIST. 3</b>					

No allowable will be assigned to this completion until all interests have been consolidated or a non-standard unit has been approved by the division.

<sup>16</sup>						<sup>17</sup> <b>OPERATOR CERTIFICATION</b> <i>I hereby certify that the information contained herein is true and complete to the best of my knowledge and belief, and that this organization either owns a working interest or unleased mineral interest in the land including the proposed bottom hole location or has a right to drill this well at this location pursuant to a contract with an owner of such a mineral or working interest, or to a voluntary pooling agreement or a compulsory pooling order heretofore entered by the division.</i>  Signature Date <b>12/30/13</b>  Toya Colvin Printed Name  Toya.Colvin@bp.com E-mail Address  <sup>18</sup> <b>SURVEYOR CERTIFICATION</b> <i>I hereby certify that the well location shown on this plat was plotted from field notes of actual surveys made by me or under my supervision, and that the same is true and correct to the best of my belief.</i>  Date of Survey Signature and Seal of Professional Surveyor:  Previously Filed  Certificate Number

