

District I
1625 N French Dr., Hobbs, NM 88240
District II
1301 W Grand Avenue, Artesia, NM 88210
District III
1000 Rio Brazos Road, Aztec, NM 87410
District IV
1220 S St Francis Dr., Santa Fe, NM 87505

State of New Mexico
Energy Minerals and Natural Resources
Department
Oil Conservation Division
1220 South St. Francis Dr.
Santa Fe, NM 87505

For temporary pits, closed-loop systems, and below-grade tanks, submit to the appropriate NMOCD District Office.
For permanent pits and exceptions submit to the Santa Fe Environmental Bureau office and provide a copy to the appropriate NMOCD District Office.

Pit, Closed-Loop System, Below-Grade Tank, or
Proposed Alternative Method Permit or Closure Plan Application

Type of action: ☐ Permit of a pit, closed-loop system, below-grade tank, or proposed alternative method
☒ Closure of a pit, closed-loop system, below-grade tank, or proposed alternative method
☐ Modification to an existing permit
☐ Closure plan only submitted for an existing permitted or non-permitted pit, closed-loop system, below-grade tank, or proposed alternative method

Instructions: Please submit one application (Form C-144) per individual pit, closed-loop system, below-grade tank or alternative request

Please be advised that approval of this request does not relieve the operator of liability should operations result in pollution of surface water, ground water or the environment. Nor does approval relieve the operator of its responsibility to comply with any other applicable governmental authority's rules, regulations or ordinances.

1.
Operator: Dugan Production Corp. OGRID #: 006515
Address: 709 East Murray Drive, Farmington, New Mexico 87401
Facility or well name: St. Moritz #91
API Number: 30-045-35285 OCD Permit Number: _____
U/L or Qtr/Qtr D Section 26 Township 24N Range 10W County: San Juan County
Center of Proposed Design: Latitude 36.29034 N Longitude 107.87090 W NAD: ☐ 1927 ☒ 1983
Surface Owner: ☒ Federal ☐ State ☐ Private ☐ Tribal Trust or Indian Allotment

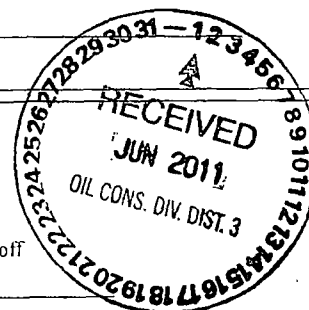
2.
☒ Pit: Subsection F or G of 19.15.17.11 NMAC
Temporary: ☒ Drilling ☐ Workover
☐ Permanent ☐ Emergency ☐ Cavitation ☐ P&A
☒ Lined ☐ Unlined Liner type: Thickness 20 mil ☒ LLDPE ☐ HDPE ☐ PVC ☐ Other _____
☒ String-Reinforced
Liner Seams: ☐ Welded ☐ Factory ☐ Other _____ Volume: 600 bbl Dimensions: L 76' x W 13' x D 8'

RCVD JAN 21 '14
OIL CONS. DIV.
DIST. 3

3.
☐ Closed-loop System: Subsection H of 19.15.17.11 NMAC
Type of Operation: ☐ P&A ☐ Drilling a new well ☐ Workover or Drilling (Applies to activities which require prior approval of a permit or notice of intent)
☐ Drying Pad ☐ Above Ground Steel Tanks ☐ Haul-off Bins ☐ Other _____
☐ Lined ☐ Unlined Liner type: Thickness _____ mil ☐ LLDPE ☐ HDPE ☐ PVC ☐ Other _____
Liner Seams: ☐ Welded ☐ Factory ☐ Other _____

4.
☐ Below-grade tank: Subsection I of 19.15.17.11 NMAC
Volume: _____ bbl Type of fluid: _____
Tank Construction material: _____
☐ Secondary containment with leak detection ☐ Visible sidewalls, liner, 6-inch lift and automatic overflow shut-off
☐ Visible sidewalls and liner ☐ Visible sidewalls only ☐ Other _____
Liner type: Thickness _____ mil ☐ HDPE ☐ PVC ☐ Other _____

5.
☐ Alternative Method:
Submittal of an exception request is required. Exceptions must be submitted to the Santa Fe Environmental Bureau office for consideration of approval.



6. **Fencing:** Subsection D of 19.15.17.11 NMAC (*Applies to permanent pits, temporary pits, and below-grade tanks*)

☐ Chain link, six feet in height, two strands of barbed wire at top (*Required if located within 1000 feet of a permanent residence, school, hospital, institution or church*)

☐ Four foot height, four strands of barbed wire evenly spaced between one and four feet

☒ Alternate. Please specify 4' Hogwire

7. **Netting:** Subsection E of 19.15.17.11 NMAC (*Applies to permanent pits and permanent open top tanks*)

☐ Screen ☐ Netting ☐ Other _____

☐ Monthly inspections (If netting or screening is not physically feasible)

8. **Signs:** Subsection C of 19.15.17.11 NMAC

☒ 12"x 24", 2" lettering, providing Operator's name, site location, and emergency telephone numbers

☐ Signed in compliance with 19.15.3.103 NMAC

9. **Administrative Approvals and Exceptions:**
 Justifications and/or demonstrations of equivalency are required. Please refer to 19.15.17 NMAC for guidance.
Please check a box if one or more of the following is requested, if not leave blank:

☒ Administrative approval(s): Requests must be submitted to the appropriate division district or the Santa Fe Environmental Bureau office for consideration of approval.

☐ Exception(s): Requests must be submitted to the Santa Fe Environmental Bureau office for consideration of approval.

10. **Siting Criteria (regarding permitting):** 19.15.17.10 NMAC
Instructions: The applicant must demonstrate compliance for each siting criteria below in the application. Recommendations of acceptable source material are provided below. Requests regarding changes to certain siting criteria may require administrative approval from the appropriate district office or may be considered an exception which must be submitted to the Santa Fe Environmental Bureau office for consideration of approval. Applicant must attach justification for request. Please refer to 19.15.17.10 NMAC for guidance. Siting criteria does not apply to drying pads or above-grade tanks associated with a closed-loop system.

Ground water is less than 50 feet below the bottom of the temporary pit, permanent pit, or below-grade tank. - NM Office of the State Engineer - iWATERS database search; USGS; Data obtained from nearby wells	<input type="checkbox"/> Yes <input checked="" type="checkbox"/> No
Within 300 feet of a continuously flowing watercourse, or 200 feet of any other significant watercourse or lakebed, sinkhole, or playa lake (measured from the ordinary high-water mark). - Topographic map; Visual inspection (certification) of the proposed site	<input type="checkbox"/> Yes <input checked="" type="checkbox"/> No
Within 300 feet from a permanent residence, school, hospital, institution, or church in existence at the time of initial application. (<i>Applies to temporary, emergency, or cavitation pits and below-grade tanks</i>) - Visual inspection (certification) of the proposed site; Aerial photo; Satellite image	<input type="checkbox"/> Yes <input checked="" type="checkbox"/> No <input type="checkbox"/> NA
Within 1000 feet from a permanent residence, school, hospital, institution, or church in existence at the time of initial application (<i>Applies to permanent pits</i>) - Visual inspection (certification) of the proposed site; Aerial photo; Satellite image	<input type="checkbox"/> Yes <input type="checkbox"/> No <input checked="" type="checkbox"/> NA
Within 500 horizontal feet of a private, domestic fresh water well or spring that less than five households use for domestic or stock watering purposes, or within 1000 horizontal feet of any other fresh water well or spring, in existence at the time of initial application. - NM Office of the State Engineer - iWATERS database search; Visual inspection (certification) of the proposed site	<input type="checkbox"/> Yes <input checked="" type="checkbox"/> No
Within incorporated municipal boundaries or within a defined municipal fresh water well field covered under a municipal ordinance adopted pursuant to NMSA 1978, Section 3-27-3, as amended. - Written confirmation or verification from the municipality: Written approval obtained from the municipality	<input type="checkbox"/> Yes <input checked="" type="checkbox"/> No
Within 500 feet of a wetland. - US Fish and Wildlife Wetland Identification map; Topographic map; Visual inspection (certification) of the proposed site	<input type="checkbox"/> Yes <input checked="" type="checkbox"/> No
Within the area overlying a subsurface mine. - Written confirmation or verification or map from the NM EMNRD-Mining and Mineral Division	<input type="checkbox"/> Yes <input checked="" type="checkbox"/> No
Within an unstable area. - Engineering measures incorporated into the design: NM Bureau of Geology & Mineral Resources; USGS; NM Geological Society; Topographic map	<input type="checkbox"/> Yes <input checked="" type="checkbox"/> No
Within a 100-year floodplain. - FEMA map	<input type="checkbox"/> Yes <input checked="" type="checkbox"/> No

11

Temporary Pits, Emergency Pits, and Below-grade Tanks Permit Application Attachment Checklist: Subsection B of 19.15.17.9 NMAC

Instructions: Each of the following items must be attached to the application. Please indicate, by a check mark in the box, that the documents are attached.

- ☐ Hydrogeologic Report (Below-grade Tanks) - based upon the requirements of Paragraph (4) of Subsection B of 19.15.17.9 NMAC
- ☒ Hydrogeologic Data (Temporary and Emergency Pits) - based upon the requirements of Paragraph (2) of Subsection B of 19.15.17.9 NMAC
- ☒ Siting Criteria Compliance Demonstrations - based upon the appropriate requirements of 19.15.17.10 NMAC
- ☒ Design Plan - based upon the appropriate requirements of 19.15.17.11 NMAC
- ☒ Operating and Maintenance Plan - based upon the appropriate requirements of 19.15.17.12 NMAC
- ☒ Closure Plan (Please complete Boxes 14 through 18, if applicable) - based upon the appropriate requirements of Subsection C of 19.15.17.9 NMAC and 19.15.17.13 NMAC
- ☐ Previously Approved Design (attach copy of design) API Number: 30-045- or Permit Number: _____

12.

Closed-loop Systems Permit Application Attachment Checklist: Subsection B of 19.15.17.9 NMAC

Instructions: Each of the following items must be attached to the application. Please indicate, by a check mark in the box, that the documents are attached.

- ☐ Geologic and Hydrogeologic Data (only for on-site closure) - based upon the requirements of Paragraph (3) of Subsection B of 19.15.17.9
- ☐ Siting Criteria Compliance Demonstrations (only for on-site closure) - based upon the appropriate requirements of 19.15.17.10 NMAC
- ☐ Design Plan - based upon the appropriate requirements of 19.15.17.11 NMAC
- ☐ Operating and Maintenance Plan - based upon the appropriate requirements of 19.15.17.12 NMAC
- ☐ Closure Plan (Please complete Boxes 14 through 18, if applicable) - based upon the appropriate requirements of Subsection C of 19.15.17.9 NMAC and 19.15.17.13 NMAC
- ☐ Previously Approved Design (attach copy of design) API Number: _____
- ☐ Previously Approved Operating and Maintenance Plan API Number: _____ (Applies only to closed-loop system that use above ground steel tanks or haul-off bins and propose to implement waste removal for closure)

13.

Permanent Pits Permit Application Checklist: Subsection B of 19.15.17.9 NMAC

Instructions: Each of the following items must be attached to the application. Please indicate, by a check mark in the box, that the documents are attached.

- ☐ Hydrogeologic Report - based upon the requirements of Paragraph (1) of Subsection B of 19.15.17.9 NMAC
- ☐ Siting Criteria Compliance Demonstrations - based upon the appropriate requirements of 19.15.17.10 NMAC
- ☐ Climatological Factors Assessment
- ☐ Certified Engineering Design Plans - based upon the appropriate requirements of 19.15.17.11 NMAC
- ☐ Dike Protection and Structural Integrity Design - based upon the appropriate requirements of 19.15.17.11 NMAC
- ☐ Leak Detection Design - based upon the appropriate requirements of 19.15.17.11 NMAC
- ☐ Liner Specifications and Compatibility Assessment - based upon the appropriate requirements of 19.15.17.11 NMAC
- ☐ Quality Control/Quality Assurance Construction and Installation Plan
- ☐ Operating and Maintenance Plan - based upon the appropriate requirements of 19.15.17.12 NMAC
- ☐ Freeboard and Overtopping Prevention Plan - based upon the appropriate requirements of 19.15.17.11 NMAC
- ☐ Nuisance or Hazardous Odors, including H₂S, Prevention Plan
- ☐ Emergency Response Plan
- ☐ Oil Field Waste Stream Characterization
- ☐ Monitoring and Inspection Plan
- ☐ Erosion Control Plan
- ☐ Closure Plan - based upon the appropriate requirements of Subsection C of 19.15.17.9 NMAC and 19.15.17.13 NMAC

14.

Proposed Closure: 19.15.17.13 NMAC

Instructions: Please complete the applicable boxes, Boxes 14 through 18, in regards to the proposed closure plan.

- Type: ☐ Drilling ☐ Workover ☐ Emergency ☐ Cavitation ☐ P&A ☐ Permanent Pit ☐ Below-grade Tank ☐ Closed-loop System
- ☐ Alternative
- Proposed Closure Method: ☐ Waste Excavation and Removal
- ☐ Waste Removal (Closed-loop systems only)
- ☒ On-site Closure Method (Only for temporary pits and closed-loop systems)
- ☒ In-place Burial ☐ On-site Trench Burial
- ☐ Alternative Closure Method (Exceptions must be submitted to the Santa Fe Environmental Bureau for consideration)

15.

Waste Excavation and Removal Closure Plan Checklist: (19.15.17.13 NMAC) **Instructions:** Each of the following items must be attached to the closure plan. Please indicate, by a check mark in the box, that the documents are attached.

- ☐ Protocols and Procedures - based upon the appropriate requirements of 19.15.17.13 NMAC
- ☐ Confirmation Sampling Plan (if applicable) - based upon the appropriate requirements of Subsection F of 19.15.17.13 NMAC
- ☐ Disposal Facility Name and Permit Number (for liquids, drilling fluids and drill cuttings)
- ☐ Soil Backfill and Cover Design Specifications - based upon the appropriate requirements of Subsection H of 19.15.17.13 NMAC
- ☐ Re-vegetation Plan - based upon the appropriate requirements of Subsection I of 19.15.17.13 NMAC
- ☐ Site Reclamation Plan - based upon the appropriate requirements of Subsection G of 19.15.17.13 NMAC

16. **Waste Removal Closure For Closed-loop Systems That Utilize Above Ground Steel Tanks or Haul-off Bins Only:** (19.15.17.13.D NMAC)

Instructions: Please identify the facility or facilities for the disposal of liquids, drilling fluids and drill cuttings. Use attachment if more than two facilities are required.

Disposal Facility Name: _____ Disposal Facility Permit Number: _____

Disposal Facility Name: _____ Disposal Facility Permit Number: _____

Will any of the proposed closed-loop system operations and associated activities occur on or in areas that *will not* be used for future service and operations?

☐ Yes (If yes, please provide the information below) ☐ No

Required for impacted areas which will not be used for future service and operations:

☐ Soil Backfill and Cover Design Specifications - based upon the appropriate requirements of Subsection H of 19.15.17.13 NMAC

☐ Re-vegetation Plan - based upon the appropriate requirements of Subsection I of 19.15.17.13 NMAC

☐ Site Reclamation Plan - based upon the appropriate requirements of Subsection G of 19.15.17.13 NMAC

17. **Siting Criteria (regarding on-site closure methods only):** 19.15.17.10 NMAC

Instructions: Each siting criteria requires a demonstration of compliance in the closure plan. Recommendations of acceptable source material are provided below. Requests regarding changes to certain siting criteria may require administrative approval from the appropriate district office or may be considered an exception which must be submitted to the Santa Fe Environmental Bureau office for consideration of approval. Justifications and/or demonstrations of equivalency are required. Please refer to 19.15.17.10 NMAC for guidance.

Ground water is less than 50 feet below the bottom of the buried waste.

- NM Office of the State Engineer - iWATERS database search; USGS; Data obtained from nearby wells

☐ Yes ☐ No
☒ NA

Ground water is between 50 and 100 feet below the bottom of the buried waste

- NM Office of the State Engineer - iWATERS database search; USGS; Data obtained from nearby wells

☐ Yes ☐ No
☒ NA

Ground water is more than 100 feet below the bottom of the buried waste.

- NM Office of the State Engineer - iWATERS database search; USGS; Data obtained from nearby wells

☒ Yes ☐ No
☐ NA

Within 300 feet of a continuously flowing watercourse, or 200 feet of any other significant watercourse or lakebed, sinkhole, or playa lake (measured from the ordinary high-water mark).

- Topographic map; Visual inspection (certification) of the proposed site

☐ Yes ☒ No

Within 300 feet from a permanent residence, school, hospital, institution, or church in existence at the time of initial application.

- Visual inspection (certification) of the proposed site; Aerial photo; Satellite image

☐ Yes ☒ No

Within 500 horizontal feet of a private, domestic fresh water well or spring that less than five households use for domestic or stock watering purposes, or within 1000 horizontal feet of any other fresh water well or spring, in existence at the time of initial application.

- NM Office of the State Engineer - iWATERS database; Visual inspection (certification) of the proposed site

☐ Yes ☒ No

Within incorporated municipal boundaries or within a defined municipal fresh water well field covered under a municipal ordinance adopted pursuant to NMSA 1978, Section 3-27-3, as amended.

- Written confirmation or verification from the municipality; Written approval obtained from the municipality

☐ Yes ☒ No

Within 500 feet of a wetland.

- US Fish and Wildlife Wetland Identification map; Topographic map; Visual inspection (certification) of the proposed site

☐ Yes ☒ No

Within the area overlying a subsurface mine.

- Written confirmation or verification or map from the NM EMNRD-Mining and Mineral Division

☐ Yes ☒ No

Within an unstable area.

- Engineering measures incorporated into the design; NM Bureau of Geology & Mineral Resources; USGS; NM Geological Society, Topographic map

☐ Yes ☒ No

Within a 100-year floodplain.

- FEMA map

☐ Yes ☒ No

18. **On-Site Closure Plan Checklist:** (19.15.17.13 NMAC) *Instructions: Each of the following items must be attached to the closure plan. Please indicate, by a check mark in the box, that the documents are attached.*

☒ Siting Criteria Compliance Demonstrations - based upon the appropriate requirements of 19.15.17.10 NMAC

☒ Proof of Surface Owner Notice - based upon the appropriate requirements of Subsection F of 19.15.17.13 NMAC

☐ Construction/Design Plan of Burial Trench (if applicable) based upon the appropriate requirements of 19.15.17.11 NMAC

☐ Construction/Design Plan of Temporary Pit (for in-place burial of a drying pad) - based upon the appropriate requirements of 19.15.17.11 NMAC

☒ Protocols and Procedures - based upon the appropriate requirements of 19.15.17.13 NMAC

☒ Confirmation Sampling Plan (if applicable) - based upon the appropriate requirements of Subsection F of 19.15.17.13 NMAC

☒ Waste Material Sampling Plan - based upon the appropriate requirements of Subsection F of 19.15.17.13 NMAC

☒ Disposal Facility Name and Permit Number (for liquids, drilling fluids and drill cuttings or in case on-site closure standards cannot be achieved)

☒ Soil Cover Design - based upon the appropriate requirements of Subsection H of 19.15.17.13 NMAC

☒ Re-vegetation Plan - based upon the appropriate requirements of Subsection I of 19.15.17.13 NMAC

☒ Site Reclamation Plan - based upon the appropriate requirements of Subsection G of 19.15.17.13 NMAC

19
Operator Application Certification:
I hereby certify that the information submitted with this application is true, accurate and complete to the best of my knowledge and belief.
Name (Print): Kurt Fagrelus Title: Vice President, Exploration
Signature: Kurt Fagrelus Date: May 20, 2011
e-mail address: kfagrelus@duganproduction.com Telephone: 505-325-1821 (o), 505-320-8248 (H)

20.
OCD Approval: ☒ Permit Application (including closure plan) ☒ Closure Plan (only) ☐ OCD Conditions (see attachment)
OCD Representative Signature: Joneth Kelly Approval Date: 6/15/2010
Title: Compliance Officer OCD Permit Number: _____

21.
Closure Report (required within 60 days of closure completion): Subsection K of 19.15.17.13 NMAC
Instructions: Operators are required to obtain an approved closure plan prior to implementing any closure activities and submitting the closure report. The closure report is required to be submitted to the division within 60 days of the completion of the closure activities. Please do not complete this section of the form until an approved closure plan has been obtained and the closure activities have been completed.
☒ Closure Completion Date: 11/8/2013

22.
Closure Method:
☐ Waste Excavation and Removal ☒ On-Site Closure Method ☐ Alternative Closure Method ☐ Waste Removal (Closed-loop systems only)
☐ If different from approved plan, please explain.

23.
Closure Report Regarding Waste Removal Closure For Closed-loop Systems That Utilize Above Ground Steel Tanks or Haul-off Bins Only:
Instructions: Please identify the facility or facilities for where the liquids, drilling fluids and drill cuttings were disposed. Use attachment if more than two facilities were utilized.
Disposal Facility Name: _____ Disposal Facility Permit Number: _____
Disposal Facility Name: _____ Disposal Facility Permit Number: _____
Were the closed-loop system operations and associated activities performed on or in areas that will not be used for future service and operations?
☐ Yes (If yes, please demonstrate compliance to the items below) ☐ No
Required for impacted areas which will not be used for future service and operations:
☐ Site Reclamation (Photo Documentation)
☐ Soil Backfilling and Cover Installation
☐ Re-vegetation Application Rates and Seeding Technique

24.
Closure Report Attachment Checklist: *Instructions: Each of the following items must be attached to the closure report. Please indicate, by a check mark in the box, that the documents are attached.*
☒ Proof of Closure Notice (surface owner and division)
☐ Proof of Deed Notice (required for on-site closure)
☒ Plot Plan (for on-site closures and temporary pits)
☒ Confirmation Sampling Analytical Results (if applicable)
☒ Waste Material Sampling Analytical Results (required for on-site closure)
☒ Disposal Facility Name and Permit Number
☒ Soil Backfilling and Cover Installation
☒ Re-vegetation Application Rates and Seeding Technique
☒ Site Reclamation (Photo Documentation)
On-site Closure Location: Latitude 36.29035° N Longitude 107.87102° W NAD: ☐ 1927 ☒ 1983

25.
Operator Closure Certification:
I hereby certify that the information and attachments submitted with this closure report is true, accurate and complete to the best of my knowledge and belief. I also certify that the closure complies with all applicable closure requirements and conditions specified in the approved closure plan.
Name (Print): Kurt Fagrelus Title: VP- Land & Exploration
Signature: Kurt Fagrelus Date: 1/20/2014
e-mail address: Kfagrelus@duganproduction.com Telephone: 505-325-1821

**Dugan Production Corp.
Closure Report**

Lease Name: St. Moritz Com #91
API No.: 30-045-35285

In accordance with Rule 10.15.17.13 NMAC the following information describes the closure of the temporary pit referenced above. All proper documentation concerning closure activities is included with the C-144. The temporary pit for this location was an approved design under Rule 19.15.17. **The closure plan for the temporary pit was submitted on 5-20-2011 and approved on 6-15-2011.**

1. Comply with siting criteria for temporary pits established by the State of New Mexico, Energy Minerals and Natural Resources Department 19.15.17.10 NMAC.

See approved permit dated 6-15-2011.

2. Provide the NMOCD district office at least 72-hours notice but no greater than 1-week prior to any closure operations. Notice will include operator name, well name and number, API number, and location (unit letter, section, township and range).

See email notification dated 11-5-2013

3. Provide the surface owner notice of the operator's proposal of an on-site closure method. Proof of notice will be attached to the permit application. Also, proof of closure notice will be provided by certified mail to surface owner after closure. Proof of notice will be attached to final closure report.

Federal surface, certified notification not applicable as per BLM/OCD MOU.

4. Remove all liquid from pit and reclaim, re-use or dispose of at an NMOCD approved facility. Upon completion of drilling operations, drilling mud will be vacuumed from pit and transported to the next reserve pit for re-use at another drilling location. After the remaining mud settles, the free water that shakes out and any free water left over from completion operations will be hauled to the Dugan Production operated Sanchez O'Brien #1 SWD located 1650 feet from the South line and 990 feet from the West line (Unit L) of Section 6, Township 24 North, Range 9 West NMPM, San Juan County, New Mexico. The disposal facility was permitted by the NMOCD with Administrative Order SWD-694.

Drilling rig was released 8-6-2013 and drilling mud was transferred to the St. Moritz Com #90 for re-use (8-6-2013) Remaining free water was transferred to the Sanchez O'Brien SWD #1 salt water disposal well.

5. Remove all fluids from temporary pit within 30-days and close within 6-months following release of drilling rig.

Free water was removed within 30-days and temporary pit was closed (11/8/2013).

6. Air dry pit contents and stabilize or solidify to a load bearing capacity sufficient to support the temporary pit's final cover.

Pit contents were allowed to dry prior to temporary pit closure.

7. Collect a five point, composite sample of the pit contents to demonstrate that Benzene, BTEX, the GRO and DRO combined fraction, TPH and chlorides (depth to groundwater from bottom of pit is greater than 100-feet), do not exceed the standards as specified in 19.15.17.9.B or the background concentration, whichever is greater.

A five point composite sample was taken of remaining cuttings in temporary pit and was tested in accordance with Subsection B of 19.15.17.13 (B)(1)(b)(ii). Depth from bottom of pit to top of ground-water is greater than 100-feet. Sample results are attached.

Components	Test Method	Limit (mg/kg)	*Results (mg/kg)
Benzene	EPA SW-846 8021B or 8260B	0.2	<0.050
BTEX	EPA SW-846 8021B or 8260B	50	<0.300
TPH	EPA SW-846 418.1	2500	300
GRO/DRO	EPA SW-846 8015M	500	43.7
Chlorides	EPA 300.1	1000 / 500	496

8. Other methods if the standards in 19.15.17.9.B can not be met will include: The pit contents may be mixed to a ratio not to exceed 3:1, un-contaminated soil or other material to pit contents. A second five point, composite sample of the contents after treatment or stabilization will be taken to demonstrate that the contents do not exceed the standards. If the second soil analyses do not satisfy the closure standards, the operator will close the temporary pit using the waste excavation and removal method.

Not applicable, testing standards of 19.15-17.9 were met.

9. Cut pit liner off at the mud line (solids level); remove liner and apron and transport to a NMOCD approved facility for disposal.

Pit liner was removed 11-8-2013 and disposed of at the Crouch Mesa Waste Management facility on 11-8-2013 (see attached invoice #1584252).

10. Stockpiled sub-surface soil will be used to backfill pit and re-contour well pad (to a final or intermediate cover that blends with the surrounding topography). A minimum of four-feet of compacted, non-waste containing, earthen material will be used as backfill.

Stockpiled sub-surface soil was used to backfill temporary pit and re-contour well pad. A minimum of four-feet of compacted, non-waste containing, earthen material was used to backfill pit.

11. Stockpiled surface soil will be used as a cover over the backfilled pit and disturbed areas of the well pad no longer needed for production operations. The soil cover will include either the background thickness of top soil or one foot of suitable material to establish vegetation at the site whichever is greater.

Stockpiled surface soil was used to cover backfilled temporary pit and disturbed areas of the well pad no longer needed for production operations. The soil cover included the greater of either the background thickness or one foot of suitable material necessary to establish vegetation. The location was re-contoured to approximate the original topography of the site and diversions were constructed to protect soil cover and minimize erosion.

12. The area will be re-seeded as per BLM guidelines. Re-seeding will be repeated until 70% of the native natural cover is achieved and maintained for two successive growing seasons. The first growing season after the pit is closed the disturbed area will be re-seeded. The seeding method will be to drill on contour whenever possible.

Re-seeding will be done according to BLM guidelines as specified by BLM/OCD memorandum of understanding.

13. The NMOCD will be notified once successful re-vegetation has been achieved.

Re-seeding will be done according to BLM guidelines as specified by BLM/OCD memorandum of understanding.

14. A steel marker will be set at the center of the on-site burial following onsite-pit closure (see application for administrative approval). The marker will be (24" X 24") and will have the operator name, lease name, well number, location (UL, Sec., Twp. and Rge.) and that it designates an "on-site burial location" lettering welded on the top side with a 4" threaded collar welded to the bottom side. The marker will be set at ground level and attached to a 4" diameter pipe that is cemented in a hole three feet deep. When the well is abandoned, a steel riser that is 4" in diameter, extending 4'

above the ground will be welded to the pipe anchored in cement below the surface. The riser will have lettering welded on side showing operator name, well number, location (UL, Sec., Twp., and Rge.) and that it designates an on-site burial location.

A flat steel marker (24" X 24") with the lettering "on-site burial location" was set at ground-level in the center of the burial site. The marker is welded to a 4" pipe that is cemented in a 3-foot deep hole and is shown in the attached photographs (administrative approval was received). When the well is P&A'd, the steel plate will be removed and a riser that is 4" in diameter, extending 4' above the ground will be welded to the pipe anchored in cement below the surface. The riser will have lettering welded on the side showing operator name, well number, location (UL, Sec., Twp., and Rge.) and that it designates an on-site burial location.

15. Closure Report will be submitted within 60-days of completion of temporary pit closure. Closure report will include the following:
- 1) Proof of Closure Notice.
 - 2) Proof of Deed Notice (if applicable).
 - 3) Plot Plan.
 - 4) Confirmation Sampling Analytical Results.
 - 5) Waste Material Sampling Analytical Results.
 - 6) Disposal Facility Name and Permit Number.
 - 7) Soil Backfilling and Cover Installation.
 - 8) Re-vegetation Application Rates and Seeding Technique.

All items listed above if applicable are attached and submitted on this date.

16. A deed notice identifying the exact location of the on-site burial will be filed with the County clerk in the county where the on-site burial occurs.

Federal surface, deed notice identifying exact location of on-site burial is not applicable according to BLM/OCD MOU.

District I
1625 N. French Dr., Hobbs, NM 88240

District II
1301 W. Grand Avenue, Artesia, NM 88210

District III
1000 Rio Brazos Rd., Aztec, NM 87410

District IV
1220 S. St. Francis Dr., Santa Fe, NM 87505

State of New Mexico
Energy, Minerals & Natural Resources Department

OIL CONSERVATION DIVISION
1220 South St. Francis Dr.
Santa Fe, NM 87505

Form C-102
Revised October 12, 2005
Instructions on back
Submit to Appropriate District Office
State Lease - 4 Copies
Fee Lease - 3 Copies

☐ AMENDED REPORT

WELL LOCATION AND ACREAGE DEDICATION PLAT

*API Number		*Pool Code 71629	*Pool Name BASIN FRUITLAND COAL
*Property Code	*Property Name ST. MORITZ		*Well Number 91
*OGRID No. 006515	*Operator Name DUGAN PRODUCTION CORPORATION		*Elevation 6758'

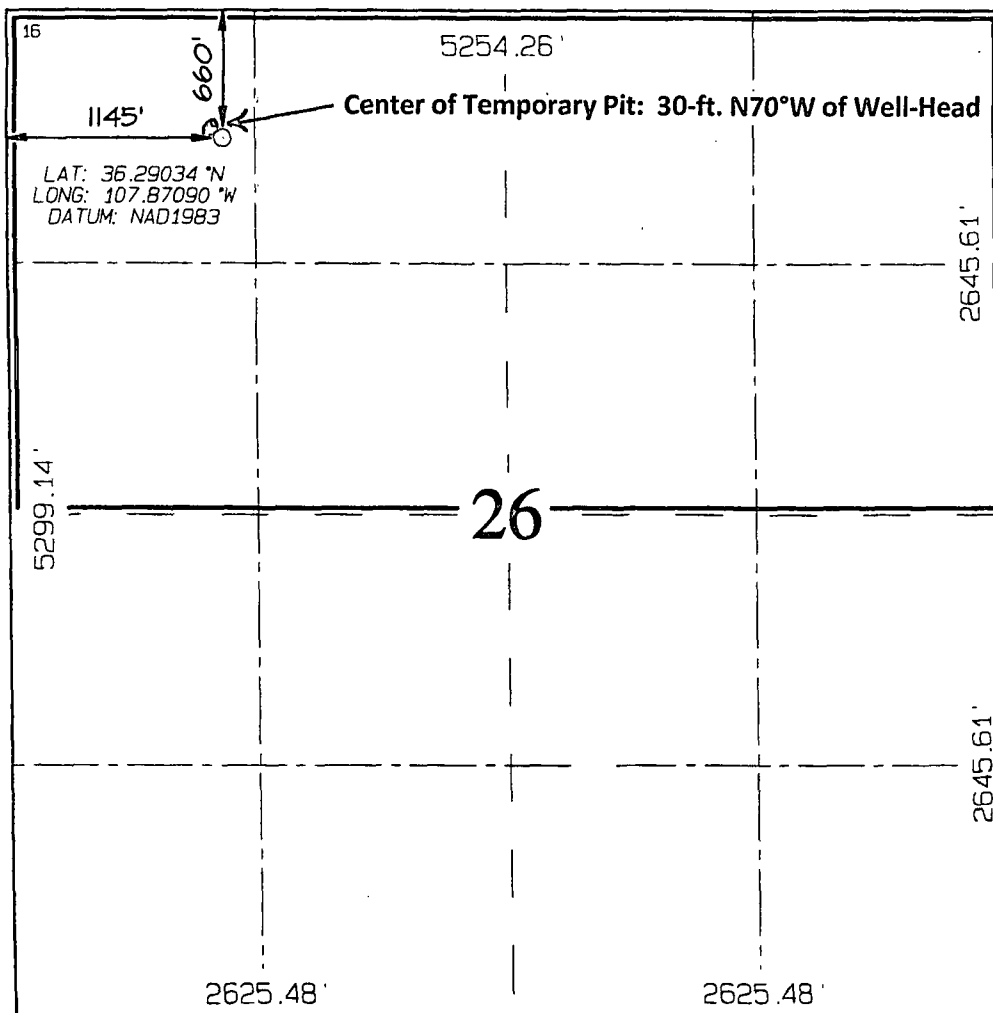
¹⁰ Surface Location

UL or lot no.	Section	Township	Range	Lot Idn	Feet from the	North/South line	Feet from the	East/West line	County
D	26	24N	10W		660	NORTH	1145	WEST	SAN JUAN

¹¹ Bottom Hole Location If Different From Surface

UL or lot no.	Section	Township	Range	Lot Idn	Feet from the	North/South line	Feet from the	East/West line	County
¹² Dedicated Acres 320.0 Acres - (N/2)					¹³ Joint or Infill	¹⁴ Consolidation Code	¹⁵ Order No.		

NO ALLOWABLE WILL BE ASSIGNED TO THIS COMPLETION UNTIL ALL INTERESTS HAVE BEEN CONSOLIDATED
OR A NON-STANDARD UNIT HAS BEEN APPROVED BY THE DIVISION



¹⁷ OPERATOR CERTIFICATION

I hereby certify that the information contained herein is true and complete to the best of my knowledge and belief, and that this organization either owns a working interest or unleased mineral interest in the land including the proposed bottom-hole location or has a right to drill this well at this location pursuant to a contract with an owner of such a mineral or working interest, or to a voluntary pooling agreement or a compulsory pooling order heretofore entered by the division.

Signature _____ Date _____

Printed Name _____

¹⁸ SURVEYOR CERTIFICATION

I hereby certify that the well location shown on this plat was plotted from field notes of actual surveys made by me or under my supervision, and that the same is true and correct to the best of my belief.

Date of Survey: MARCH 29, 2011

Signature and Seal of Professional Surveyor



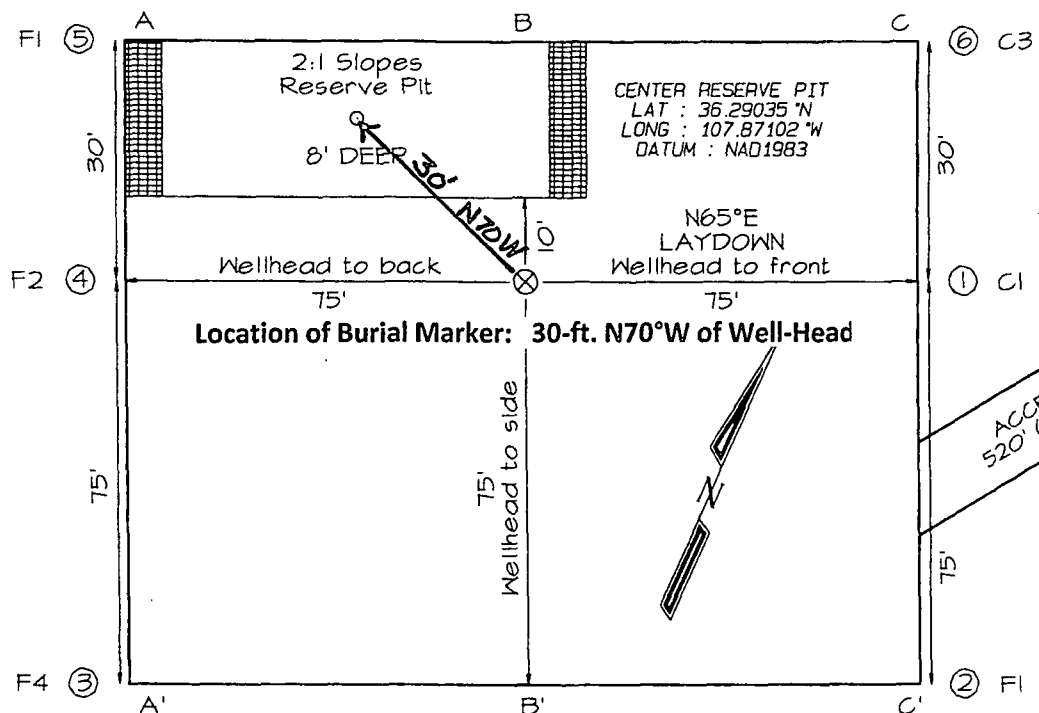
JASON C. EDWARDS

Certificate Number 15269

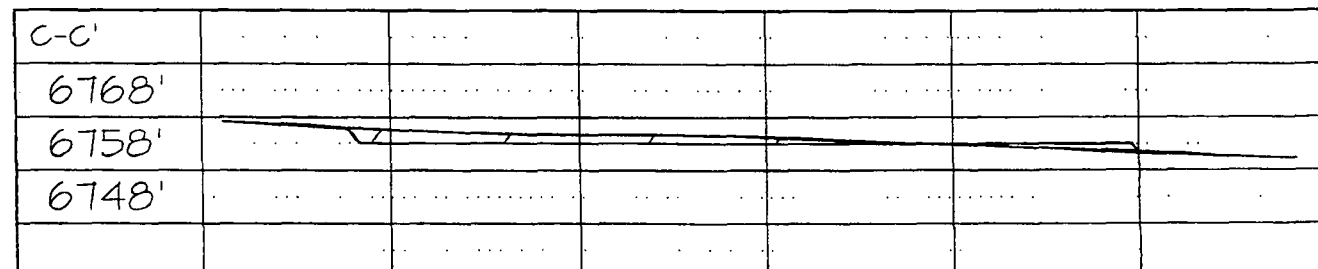
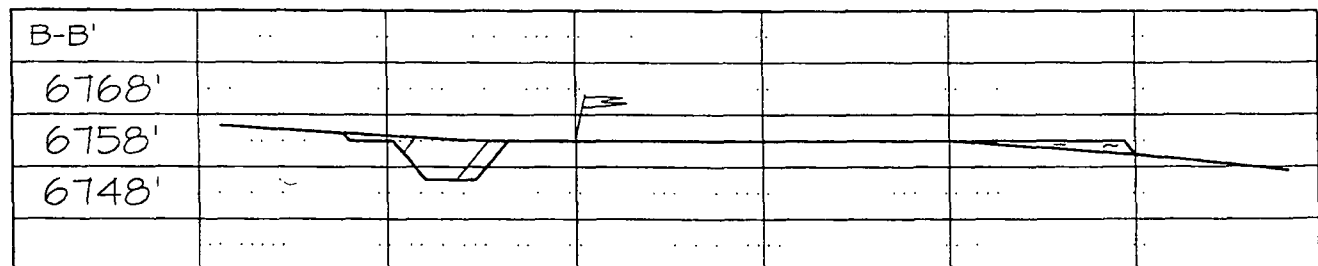
LATITUDE: 36.29034° N
LONGITUDE: 107.87090° W

PLAT NOTE:

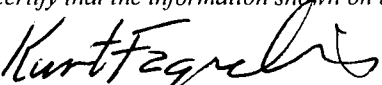
****SURFACE OWNER***
Bureau of Land
Management



A-A'						
6768'						
6758'						
6748'						



Note: Contractor should call One-Call for location of any marked or unmarked buried pipelines or cables on well pad and/or access road at least two (2) working days prior to construction

Submit To Appropriate District Office Two Copies District I 1625 N. French Dr., Hobbs, NM 88240 District II 811 S. First St., Artesia, NM 88210 District III 1000 Rio Brazos Rd., Aztec, NM 87410 District IV 1220 S. St. Francis Dr., Santa Fe, NM 87505	State of New Mexico Energy, Minerals and Natural Resources Oil Conservation Division 1220 South St. Francis Dr. Santa Fe, NM 87505	Form C-105 Revised August 1, 2011								
		1. WELL API NO. 30-045-35285								
		2. Type of Lease <input type="checkbox"/> STATE <input type="checkbox"/> FEE <input checked="" type="checkbox"/> FED/INDIAN								
		3. State Oil & Gas Lease No. NM-78060								
WELL COMPLETION OR RECOMPLETION REPORT AND LOG										
4. Reason for filing: <input type="checkbox"/> COMPLETION REPORT (Fill in boxes #1 through #31 for State and Fee wells only) <input checked="" type="checkbox"/> C-144 CLOSURE ATTACHMENT (Fill in boxes #1 through #9, #15 Date Rig Released and #32 and/or #33; attach this and the plat to the C-144 closure report in accordance with 19.15.17.13.K NMAC)		5. Lease Name or Unit Agreement Name St. Moritz Corn 6. Well Number: #91								
7. Type of Completion: <input checked="" type="checkbox"/> NEW WELL <input type="checkbox"/> WORKOVER <input type="checkbox"/> DEEPENING <input type="checkbox"/> PLUGBACK <input type="checkbox"/> DIFFERENT RESERVOIR <input type="checkbox"/> OTHER										
8. Name of Operator Dugan Production Corp.		9. OGRID 00615								
10. Address of Operator P.O. Box 420, Farmington, NM 87499-0420 505-325-1821		11. Pool name or Wildcat								
12. Location	Unit Ltr	Section	Township	Range	Lot	Feet from the	N/S Line	Feet from the	E/W Line	County
Surface:	D	26	24N	10W		660	N	1145	W	SJ
BH:										
13. Date Spudded	14. Date T.D. Reached	15. Date Rig Released 8-6-2013		16. Date Completed (Ready to Produce)			17. Elevations (DF and RKB, RT, GR, etc.)			
18. Total Measured Depth of Well		19. Plug Back Measured Depth		20. Was Directional Survey Made?			21. Type Electric and Other Logs Run			
22. Producing Interval(s), of this completion - Top, Bottom, Name										
23. CASING RECORD (Report all strings set in well)										
CASING SIZE		WEIGHT LB/FT.		DEPTH SET		HOLE SIZE		CEMENTING RECORD		AMOUNT PULLED
24. LINER RECORD						25. TUBING RECORD				
SIZE	TOP	BOTTOM	SACKS CEMENT	SCREEN	SIZE	DEPTH SET	PACKER SET			
26. Perforation record (interval, size, and number)						27. ACID, SHOT, FRACTURE, CEMENT, SQUEEZE, ETC.				
						DEPTH INTERVAL		AMOUNT AND KIND MATERIAL USED		
28. PRODUCTION										
Date First Production		Production Method (<i>Flowing, gas lift, pumping - Size and type pump</i>)				Well Status (<i>Prod. or Shut-in</i>)				
Date of Test	Hours Tested	Choke Size	Prod'n For Test Period	Oil - Bbl	Gas - MCF	Water - Bbl.	Gas - Oil Ratio			
Flow Tubing Press.	Casing Pressure	Calculated 24-Hour Rate	Oil - Bbl.	Gas - MCF	Water - Bbl.	Oil Gravity - API - (<i>Corr.</i>)				
29. Disposition of Gas (<i>Sold, used for fuel, vented, etc.</i>)							30. Test Witnessed By			
31. List Attachments										
32. If a temporary pit was used at the well, attach a plat with the location of the temporary pit.										
33. If an on-site burial was used at the well, report the exact location of the on-site burial:										
Latitude 36.29035 N				Longitude 107.87102 W				NAD 1927 1983 X		
I hereby certify that the information shown on both sides of this form is true and complete to the best of my knowledge and belief										
Signature 			Printed Name Kurt Fagrelius		Title VP Land & Exploration			Date 1-20-2013		
E-mail Address kfagrelius@duganproduction.com										

Kurt Fagrelus

From: Kurt Fagrelus
Sent: Tuesday, November 05, 2013 12:24 PM
To: Brandon.Powell@state.nm.us; Kelly, Jonathan, EMNRD <Jonathan.Kelly@state.nm.us> (Jonathan.Kelly@state.nm.us); bertha.spencer@bia.gov; 'mkelley@blm.gov'; 'dmankiewicz@blm.gov'
Subject: 72-Hr Notice to Close Temp Drlg Pits 11-8-2013
Attachments: Copy of 72-Hr Notice to Close Temp Drlg Pits 11-8-2013.xls

November 5, 2013

Mr. Brandon.Powel, Mr. Johnathan Kelley, Ms. Bertha Spencer, Mr. Mark Kelly and Mr. Dave Mankiewicz:

Dugan Production Corp. is hereby giving notice that Dugan will be closing the following drilling reserve pits (Temporary Pits):

- 1) St. Moritz Com #90 – Federal Surface
- 2) St. Moritz Com #91 – Federal Surface
- 3) Hoss Com #96 – Navajo Allotted Surface

Site specific and cuttings analysis information for each drilling reserve pit is included in the enclosed attachment.

Depending on prevailing weather conditions; this pits will be closed on Friday, November 8, 2013.

If you have any questions or require additional information, please contact me.

Sincerely, Kurt Fagrelus

Dugan Production Corp. Permanent Pits to be Closed on November 8, 2010

Lease Name	St. Moritz Com #90	St. Moritz Com #91	Hoss Com #96
API Number	30-045-35282	30-045-35285	30-045-34601
Surface Owner - Notice Sent	Federal	Federal	Navajo Allotted
Location - UL, Sec., Twp, Rge	N-26-24N-10W	D-26-24N-10W	M-12-23N-11W
Latitude	36.28031 N	36.29034 N	36.23642 N
Longitude	107.86841 W	107.87090 W	107.96067 W
Benzene (<0.2 mg/kg)	<0.050 mg/kg	<0.050 mg/kg	<0.050 mg/kg
Betex (<50 mg/kg)	<0.300 mg/kg	<0.300 mg/kg	<0.3.00 mg/kg
TPH - Analytic Mthd-418.1 (<2500 mg/kg)	100 mg/kg	300 mg/kg	88 mg/kg
GRO + DRO - Analytic Mthd-8015 (<200 mg/kg)	36.6 mg/kg	43.7 mg/kg	<10 mg/kg
Chlorides (<1000 mg/kg)	592 mg/kg	496 mg/kg	864 mg/kg
Thresholds as per "Pit Rule" 19.15.17 NMAC are highlighted in red.			

Kurt Fagrelus

From: Microsoft Outlook
To: Brandon.Powell@state.nm.us; Kelly, Jonathan, EMNRD <Jonathan.Kelly@state.nm.us> (Jonathan.Kelly@state.nm.us)
Sent: Tuesday, November 05, 2013 12:24 PM
Subject: Relayed: 72-Hr Notice to Close Temp Drlg Pits 11-8-2013

Delivery to these recipients or groups is complete, but no delivery notification was sent by the destination server:

Brandon.Powell@state.nm.us (Brandon.Powell@state.nm.us)

Kelly, Jonathan, EMNRD <Jonathan.Kelly@state.nm.us> (Jonathan.Kelly@state.nm.us) (Jonathan.Kelly@state.nm.us)

Subject: 72-Hr Notice to Close Temp Drlg Pits 11-8-2013

Kurt Fagrelus

From: Microsoft Outlook
To: bertha.spencer@bia.gov
Sent: Tuesday, November 05, 2013 12:24 PM
Subject: Relayed: 72-Hr Notice to Close Temp Drlg Pits 11-8-2013

Delivery to these recipients or groups is complete, but no delivery notification was sent by the destination server:

bertha.spencer@bia.gov (bertha.spencer@bia.gov)

Subject: 72-Hr Notice to Close Temp Drlg Pits 11-8-2013

Kurt Fagrelus

From: Microsoft Outlook
To: mkelley@blm.gov; dmankiewicz@blm.gov
Sent: Tuesday, November 05, 2013 12:24 PM
Subject: Relayed: 72-Hr Notice to Close Temp Drlg Pits 11-8-2013

Delivery to these recipients or groups is complete, but no delivery notification was sent by the destination server:

mkelley@blm.gov (mkelley@blm.gov)

dmankiewicz@blm.gov (dmankiewicz@blm.gov)

Subject: 72-Hr Notice to Close Temp Drlg Pits 11-8-2013



PHONE (575) 393-2326 ° 101 E. MARLAND ° HOBBS, NM 88240

October 24, 2013

KURT FAGRELIUS

DUGAN PRODUCTION

P. O. BOX 420

FARMINGTON, NM 87499

RE: PIT CLOSURES

Enclosed are the results of analyses for samples received by the laboratory on 10/11/13 10:30.

Cardinal Laboratories is accredited through Texas NELAP under certificate number T104704398-11-3. Accreditation applies to drinking water, non-potable water and solid and chemical materials. All accredited analytes are denoted by an asterisk (*). For a complete list of accredited analytes and matrices visit the TCEQ website at www.tceq.texas.gov/field/qa/lab_accred_certif.html.

Cardinal Laboratories is accredited through the State of Colorado Department of Public Health and Environment for:

Method EPA 552.2	Haloacetic Acids (HAA-5)
Method EPA 524.2	Total Trihalomethanes (TTHM)
Method EPA 524.4	Regulated VOCs (V1, V2, V3)

Accreditation applies to public drinking water matrices.

This report meets NELAP requirements and is made up of a cover page, analytical results, and a copy of the original chain-of-custody. If you have any questions concerning this report, please feel free to contact me.

Sincerely,

Celey D. Keene

Lab Director/Quality Manager

Analytical Results For:

 DUGAN PRODUCTION
 KURT FAGRELIUS
 P. O. BOX 420
 FARMINGTON NM, 87499
 Fax To: (505) 327-4043

 Received: 10/11/2013
 Reported: 10/24/2013
 Project Name: PIT CLOSURES
 Project Number: NOT GIVEN
 Project Location: NOT GIVEN

 Sampling Date: 10/09/2013
 Sampling Type: Soil
 Sampling Condition: Cool & Intact
 Sample Received By: Jodi Henson

Sample ID: ST. MORITZ 91 (H302469-02)

BTEX 8021B		mg/kg	Analyzed By: MS						
Analyte	Result	Reporting Limit	Analyzed	Method Blank	BS	% Recovery	True Value QC	RPD	Qualifier
Benzene*	<0.050	0.050	10/16/2013	ND	1.90	95.1	2.00	1.49	
Toluene*	<0.050	0.050	10/16/2013	ND	1.97	98.5	2.00	1.87	
Ethylbenzene*	<0.050	0.050	10/16/2013	ND	2.00	100	2.00	1.58	
Total Xylenes*	<0.150	0.150	10/16/2013	ND	5.96	99.4	6.00	1.35	
Total BTEX	<0.300	0.300	10/16/2013	ND					

Surrogate: 4-Bromofluorobenzene (PIL) 107 % 89.4-126

Chloride, SM4500Cl-B		mg/kg	Analyzed By: AP						
Analyte	Result	Reporting Limit	Analyzed	Method Blank	BS	% Recovery	True Value QC	RPD	Qualifier
Chloride	496	16.0	10/14/2013	ND	432	108	400	0.00	

TPH 418.1		mg/kg	Analyzed By: CK						
Analyte	Result	Reporting Limit	Analyzed	Method Blank	BS	% Recovery	True Value QC	RPD	Qualifier
TPH 418.1	300	10.0	10/22/2013						SUB-SS

TPH 8015M		mg/kg	Analyzed By: MS						
Analyte	Result	Reporting Limit	Analyzed	Method Blank	BS	% Recovery	True Value QC	RPD	Qualifier
GRO C6-C10	<10.0	10.0	10/11/2013	ND	206	103	200	6.70	
DRO >C10-C28	43.7	10.0	10/11/2013	ND	197	98.3	200	7.58	
Total TPH C6-C28	43.7	10.0	10/11/2013	ND	403	101	400	7.13	

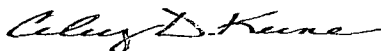
Surrogate: 1-Chlorooctane 105 % 65.2-140

Surrogate: 1-Chlorooctadecane 112 % 63.6-154

Cardinal Laboratories

* = Accredited Analyte

PLEASE NOTE: Liability and Damages. Cardinal's liability and client's exclusive remedy for any claim arising, whether based in contract or tort, shall be limited to the amount paid by client for analyses. All claims, including those for negligence and any other cause whatsoever shall be deemed waived unless made in writing and received by Cardinal within thirty (30) days after completion of the applicable service. In no event shall Cardinal be liable for incidental or consequential damages, including, without limitation, business interruptions, loss of use, or loss of profits incurred by client, its subsidiaries, affiliates or successors arising out of or related to the performance of the services hereunder by Cardinal, regardless of whether such claim is based upon any of the above stated reasons or otherwise. Results relate only to the samples identified above. This report shall not be reproduced except in full with written approval of Cardinal Laboratories.



Celey D. Keene, Lab Director/Quality Manager

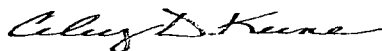
Notes and Definitions

SUB-SS	Analysis subcontracted to SunStar Laboratories, Inc.
QM-4X	The spike recovery was outside of QC acceptance limits for the MS and/or MSD due to analyte concentration at 4 times or greater the spike concentration. The QC batch was accepted based on LCS and/or LCSD recoveries within the acceptance limits.
ND	Analyte NOT DETECTED at or above the reporting limit
RPD	Relative Percent Difference
**	Samples not received at proper temperature of 6°C or below.
***	Insufficient time to reach temperature.
-	Chloride by SM4500Cl-B does not require samples be received at or below 6°C
	Samples reported on an as received basis (wet) unless otherwise noted on report

Cardinal Laboratories

*=Accredited Analyte

PLEASE NOTE: Liability and Damages. Cardinal's liability and client's exclusive remedy for any claim arising, whether based in contract or tort, shall be limited to the amount paid by client for analyses. All claims, including those for negligence and any other cause whatsoever shall be deemed waived unless made in writing and received by Cardinal within thirty (30) days after completion of the applicable service. In no event shall Cardinal be liable for incidental or consequential damages, including, without limitation, business interruptions, loss of use, or loss of profits incurred by client, its subsidiaries, affiliates or successors arising out of or related to the performance of the services hereunder by Cardinal, regardless of whether such claim is based upon any of the above stated reasons or otherwise. Results relate only to the samples identified above. This report shall not be reproduced except in full with written approval of Cardinal Laboratories.



Celey D. Keene, Lab Director/Quality Manager



CHAIN OF CUSTODY RECORD

Page ____ of ____

Client: Dugan Prod. Corp.

Contact: Kurt Fegrelius

Address: _____

Phone Number: _____

Email: KFegrelius@duganproduction.com

NOTES:

- 1) Ensure proper container packaging.
- 2) Ship samples promptly following collection.
- 3) Designate Sample Reject Disposition.

PO# _____

Project Name: _____

Table 1. - Matrix Type

1 = Surface Water, 2 = Ground Water
3 = Soil/Sediment, 4 = Prod.W., 5 = Oil
6 = Waste, 7 = Other (Specify) _____

FOR GAL USE ONLY

GAL JOB # _____

Samplers Signature: _____

Lab Name: Green Analytical Laboratories (970) 247-4220 FAX (970) 247-4227		Analyses Required										Comments	
Address: 75 Suttle Street, Durango, CO 81303 www.greenanalytical.com													
Sample ID	Collection	Miscellaneous	Preservative(s)										
	Date	Time	Collected by: (Init.)	Matrix Type From Table 1	No. of Containers	Sample Filtered ? Y/N	Unpreserved (Ice Only)	HNO3	HCL	H2SO4	NAOH	Other (Specify)	
H302469													
1. Hass Com 96	10-9-13	4:30											
2.													
3. St. Moritz 91	10-9-13	2:30											
4.													
5. St. Moritz 90	10-9-13	1:30											
6.													
7.													
8.													
9.													
10.													
Relinquished by:			Date:	Time:	Received by:			Date:	Time:				
Relinquished by:			Date:	Time:	Received by:			Date:	Time:				
Relinquished by: Kurt Fegrelius			Date: 10-9-13	Time: 4:45	Received by: Ann Clam			Date: 10/9/13	Time: 1645				

* Sample Reject [] Return [] Dispose [] Store (30 Days)

Ann Clam 10/10/13 1600 Fed Ex 10/10/13 1600 Lori Jensen 10:30

Dugan Production Corp.
709 East Murray Drive
Farmington, NM 87401

Well Name: St. Moritz #91
Location: S 26 T 24 N R 10 W
Drilling Operator: D & D Service
Rig #: 1
Spud Date: 8-1-13

Date:
Rig Moved Off 8-7-13

Date to Remove Liquids by:
(30-days from rig release)

Date to Close Pit by:
(180-days from rig release)

Log Book of Daily inspections during Drilling/workover operations, weekly after rig is moved off.

Date:	Signature	Freeboard (> 2-ft.)	Tears or Holes	Oil	Trash	Remarks
		Yes/No	Yes/No	Yes/No	Yes/No	
8-1-13	Signature	Yes/No	Yes/No	Yes/No	Yes/No	Gravel 7" Due to GWT 300
8-2-13	Mike	Yes	No	No	No	Lost 4"
8-3-13	Mike	Yes	No	No	No	Lost 2"
8-4-13	Mike	Yes	No	No	No	Lost 2 1/2"
8-5-13	Mike	Yes	No	No	No	Lost 2 1/2"
8-6-13	Mike	Yes	No	No	No	Gain 9" Pectocamp. Job
8-6-13	2H	Yes	No	No	No	160 bbls Mud pulled
8-7-13	2H	Yes	No	No	No	160 bbls Mud pulled
8-8-13	2H	Yes	No	No	No	160 bbls Mud pulled
8-12-13	2H	Yes	No	No	No	80 bbls Mud pulled
8-20-13	2H	Yes	No	No	No	80 bbls Mud pulled
9-4-13	2H	Yes	No	No	No	40 bbls Mud pulled
9-13-13	2H	Yes	No	No	No	15 bbls Mud pulled
9-16-13	2H	Yes	No	No	No	20 bbls Mud pulled
9-19-13	2H	Yes	No	No	No	20 bbls Mud pulled
9-23-13	2H	Yes	No	No	No	30 bbls Mud pulled
9-26-13	2H	Yes	No	No	No	15 bbls Mud pulled
9-30-13	2H	Yes	No	No	No	25 bbls Mud pulled
9-30-13	2H	Yes	No	No	No	10 Swabbing
10-1-13	2H	Yes	No	No	No	10 Swabbing
10-2-13	2H	Yes	No	No	No	10 Mud pulled
10-9-13	2H	Yes	No	No	No	1 Mud pulled
10-11-13	2H	Yes	No	No	No	1 Mud pulled
10-29-13	2H	Yes	No	No	No	5 Mud pulled
10-30-13	2H	Yes	No	No	No	1 Mud pulled

1870
1871
1872
1873
1874
1875
1876
1877
1878
1879
1880
1881
1882
1883
1884
1885
1886
1887
1888
1889
1890
1891
1892
1893
1894
1895
1896
1897
1898
1899
1900
1901
1902
1903
1904
1905
1906
1907
1908
1909
1910
1911
1912
1913
1914
1915
1916
1917
1918
1919
1920
1921
1922
1923
1924
1925
1926
1927
1928
1929
1930
1931
1932
1933
1934
1935
1936
1937
1938
1939
1940
1941
1942
1943
1944
1945
1946
1947
1948
1949
1950
1951
1952
1953
1954
1955
1956
1957
1958
1959
1960
1961
1962
1963
1964
1965
1966
1967
1968
1969
1970
1971
1972
1973
1974
1975
1976
1977
1978
1979
1980
1981
1982
1983
1984
1985
1986
1987
1988
1989
1990
1991
1992
1993
1994
1995
1996
1997
1998
1999
2000
2001
2002
2003
2004
2005
2006
2007
2008
2009
2010
2011
2012
2013
2014
2015
2016
2017
2018
2019
2020
2021
2022
2023
2024
2025
2026
2027
2028
2029
2030
2031
2032
2033
2034
2035
2036
2037
2038
2039
2040
2041
2042
2043
2044
2045
2046
2047
2048
2049
2050
2051
2052
2053
2054
2055
2056
2057
2058
2059
2060
2061
2062
2063
2064
2065
2066
2067
2068
2069
2070
2071
2072
2073
2074
2075
2076
2077
2078
2079
2080
2081
2082
2083
2084
2085
2086
2087
2088
2089
2090
2091
2092
2093
2094
2095
2096
2097
2098
2099
2100
2101
2102
2103
2104
2105
2106
2107
2108
2109
2110
2111
2112
2113
2114
2115
2116
2117
2118
2119
2120
2121
2122
2123
2124
2125
2126
2127
2128
2129
2130
2131
2132
2133
2134
2135
2136
2137
2138
2139
2140
2141
2142
2143
2144
2145
2146
2147
2148
2149
2150
2151
2152
2153
2154
2155
2156
2157
2158
2159
2160
2161
2162
2163
2164
2165
2166
2167
2168
2169
2170
2171
2172
2173
2174
2175
2176
2177
2178
2179
2180
2181
2182
2183
2184
2185
2186
2187
2188
2189
2190
2191
2192
2193
2194
2195
2196
2197
2198
2199
2200
2201
2202
2203
2204
2205
2206
2207
2208
2209
2210
2211
2212
2213
2214
2215
2216
2217
2218
2219
2220
2221
2222
2223
2224
2225
2226
2227
2228
2229
2230
2231
2232
2233
2234
2235
2236
2237
2238
2239
2240
2241
2242
2243
2244
2245
2246
2247
2248
2249
2250
2251
2252
2253
2254
2255
2256
2257
2258
2259
2260
2261
2262
2263
2264
2265
2266
2267
2268
2269
2270
2271
2272
2273
2274
2275
2276
2277
2278
2279
2280
2281
2282
2283
2284
2285
2286
2287
2288
2289
2290
2291
2292
2293
2294
2295
2296
2297
2298
2299
2300
2301
2302
2303
2304
2305
2306
2307
2308
2309
2310
2311
2312
2313
2314
2315
2316
2317
2318
2319
2320
2321
2322
2323
2324
2325
2326
2327
2328
2329
2330
2331
2332
2333
2334
2335
2336
2337
2338
2339
2340
2341
2342
2343
2344
2345
2346
2347
2348
2349
2350
2351
2352
2353
2354
2355
2356
2357
2358
2359
2360
2361
2362
2363
2364
2365
2366
2367
2368
2369
2370
2371
2372
2373
2374
2375
2376
2377
2378
2379
2380
2381
2382
2383
2384
2385
2386
2387
2388
2389
2390
2391
2392
2393
2394
2395
2396
2397
2398
2399
2400
2401
2402
2403
2404
2405
2406
2407
2408
2409
2410
2411
2412
2413
2414
2415
2416
2417
2418
2419
2420
2421
2422
2423
2424
2425
2426
2427
2428
2429
2430
2431
2432
2433
2434
2435
2436
2437
2438
2439
2440
2441
2442
2443
2444
2445
2446
2447
2448
2449
2450
2451
2452
2453
2454
2455
2456
2457
2458
2459
2460
2461
2462
2463
2464
2465
2466
2467
2468
2469
2470
2471
2472
2473
2474
2475
2476
2477
2478
2479
2480
2481
2482
2483
2484
2485
2486
2487
2488
2489
2490
2491
2492
2493
2494
2495
2496
2497
2498
2499
2500
2501
2502
2503
2504
2505
2506
2507
2508
2509
2510
2511
2512
2513
2514
2515
2516
2517
2518
2519
2520
2521
2522
2523
2524
2525
2526
2527
2528
2529
2530
2531
2532
2533
2534
2535
2536
2537
2538
2539
2540
2541
2542
2543
2544
2545
2546
2547
2548
2549
2550
2551
25

CH
CH
CH
CH

2-4
A-1
2-4
56

0.2
0.4
0.6
0.8

236

20

1/2 21.20
1/2 27.10



WM of NM - San Juan County

78 County Road 3140
Aztec, NM, 87410

Ticket# 1584252
Ph: (505) 334-1121

Customer Name DUGANPRODUCTION DUGAN PRODUCT Carrier DUGPRO DUGAN PRODUCTION CORP.
Ticket Date 11/12/2013 Vehicle# 8 Volume
Payment Type Credit Account Container
Manual Ticket# Driver
Route Check#
Hauling Ticket# Billing# -0000019
Destination Grid
PO#

	Time	Scale	Operator	Inbound	Gross	9980 lb*
In	11/12/2013 14:47:42	Inbound 301	njohnson		Tare	9160 lb
Out	11/12/2013 15:13:21	Outbound 302	vickyq		Net	920 lb
			* Manual Weight		Tons	0.41

Comments

Product	LD%	Qty	UDM	Rate	Tax	Amount	Origin
1 SpwasteSolidDth-Cubic Ya	100	3.00	Yards				FARM
2 EVFt-P-Standard Environm	100		%				FARM
3 FUEL-T-Fuel Surcharge -	100		%				FARM
4 RCR-P-Regulatory Cost Re	100		%				FARM

Total Tax
Total Ticket

Driver's Signature

St. Moritz Com #90

St. Moritz Com #91

Hoss Com #96

Kurt Fegredo

3/10 11-12-13

SPECIAL WASTE SHIPMENT RECORD

WASTE MANAGEMENT OF NEW MEXICO, INC.

SAN JUAN COUNTY REGIONAL LANDFILL

PERMIT #SWM-052426, #SWM-052426SP

#78 CR 3140 P.O. Box 1402

Aztec, New Mexico 87410

505/334-1121

1584252

19683

Shipment # _____

Profile # 101364 NM
(Required)

1. Generator's Work site name and address (physical site address of waste generation) <i>St. Montez Com #90 - Sec 26-T24N, R10W, San Juan Co, NM. (See attached)</i>		
2. Generator's name and address <i>Dugan Production Corp - Kurt Fagrellius</i> P O Box 420 Farmington NM 87499		Generator's Telephone no. 505-325-1821
3. Authorized Agent name and address (if different from #2) <i>Same as above</i>		Agent's Telephone no. <i>505-325-1821</i>
4. Description materials 20 mills Pit Liner (CLEAN)	5. Container's No. Type <i>1-B</i>	6. Total Quantity (tons) (yd3) <i>3</i>
7. Special handling instructions N/A		
8. GENERATOR or AUTHORIZED AGENT CERTIFICATION: I hereby declare that the contents of this consignment are fully and accurately described above and are classified, packed, marked and labeled, and are in all respects in proper condition for transport by highway in accordance with applicable international and government regulations. I hereby certify that the above named material does not contain free liquid as defined by 40CFR Part 258.28 and is not a hazardous waste as defined by 40CFR 261 or any applicable state law.		
Generator or Agent (Printed/typed name and title) <i>Kurt Fagrellius (VP Exploration)</i>	Generator or Agents Signature <i>Kurt Fagrellius</i>	Month/Day/Year <i>11 18 13</i>
9. Transporter 1 (Acknowledgement of receipt of materials)		
Printed/typed name & title, address, telephone no. <i>Kurt Fagrellius 505-325-1821</i> <i>PO Box 420, Farmington, NM 87499</i> <i>Dugan Production</i>	Driver Signature <i>Kurt Fagrellius</i>	Month/Day/Year <i>11 12 13</i>
10. Transporter 2 (Acknowledgement of receipt of materials)		
Printed/typed name & title, address, telephone no.	Driver Signature	Month/Day/Year <i>1 1</i>
11. Discrepancy indication space <i>#8) date signed different from date delivered.</i>		
12. Waste disposal site Location co-ordinates (X,Y,Z) <i>Elev. 5840 N36 41S 99 11 W108 02.556</i>		
Received by name and title (Printed/typed) <i>Nikolita Johnson</i>	SJC Landfill Rep. Signature <i>[Signature]</i>	Month / Day / Year <i>11 12 13</i>

White/GEN

Yellow/I ANDFII

Pink/TRANSPORTER

Golden/GEN

san juan reproduction 98-14

1. Generator's Work site name and address (physical site address of waste generation)

St. Moritz Com #91- Sec. 26, T24N, R10W, San Juan Co;

2. Generator's name and address

Generator's Telephone no.

1. Generator's Work site name and address (physical site address of waste generation)

Hess Com #96, Sec. 12, T23N, R11W- San Juan County, New Mexico

Generator's Telephone no.

Kurt Fagrelus

From: Microsoft Outlook
To: Brandon.Powell@state.nm.us
Sent: Wednesday, January 15, 2014 1:47 PM
Subject: Relayed: Temporary Pit Closure Reports St.Moritz Com #90 and #91, Hoss Com #96

Delivery to these recipients or groups is complete, but no delivery notification was sent by the destination server:

Brandon.Powell@state.nm.us (Brandon.Powell@state.nm.us)

Subject: Temporary Pit Closure Reports St.Moritz Com #90 and #91, Hoss Com #96

Kurt Fagrelius

From: Kurt Fagrelius
Sent: Wednesday, January 15, 2014 1:47 PM
To: Brandon.Powell@state.nm.us
Subject: Temporary Pit Closure Reports St.Moritz Com #90 and #91, Hoss Com #96

Hello Brandon, on November 8, 2013 Dugan Production Corp. closed the temporary pits on the St. Moritz Com #90 (30-045- 35282), St. Moritz Com #91 (30-045-35285) and the Hoss Com #96 (30-045-34601). Due to inclement winter weather conditions, interim reclamation on the sites was delayed until the first two weeks of January, 2014. On Friday January 17, 2014 we will install the "temporary pit burial markers" and take the required photographs documenting the completion of pit closure and interim reclamation. The final closure reports will be delivered to your office on January 20, 2014. Thank you for your consideration on this matter (reports will be turned in 12-days past overdue).

If you have any questions or require additional information, please contact me.

Sincerely,

Kurt Fagrelius
Dugan Production Corp.
505-325-1821 office
505-320-8248 cell



DUGAN PRODUCTION CORP.

ST. MORITZ #91

NM-78060

API # 30-045-35285

660' FNL, 1145' FWL

NWNW SEC. 26, T24N, R10W

LAT. 36.29034 LONG. 107.87090

SAN JUAN COUNTY, NM

FOR EMERGENCY CALL (505)325-1823

