

Submit To Appropriate District Office Two Copies <u>District I</u> 1625 N. French Dr., Hobbs, NM 88240 <u>District II</u> 811 S. First St., Artesia, NM 88210 <u>District III</u> 1000 Rio Brazos Rd., Aztec, NM 87410 <u>District IV</u> 1220 S. St. Francis Dr., Santa Fe, NM 87505	<b>State of New Mexico</b> <b>Energy, Minerals and Natural Resources</b>  <b>Oil Conservation Division</b> <b>1220 South St. Francis Dr.</b> <b>Santa Fe, NM 87505</b>	<div style="text-align: right;"> <b>Form C-105</b>            Revised August 1, 2011         </div> 1. WELL API NO. 30-043-21167 2. Type of Lease <input checked="" type="checkbox"/> STATE <input type="checkbox"/> FEE <input type="checkbox"/> FED/INDIAN 3. State Oil & Gas Lease No.
--	---	---

WELL COMPLETION OR RECOMPLETION REPORT AND LOG
--

4. Reason for filing:  <input checked="" type="checkbox"/> <b>COMPLETION REPORT</b> (Fill in boxes #1 through #31 for State and Fee wells only)  <input type="checkbox"/> <b>C-144 CLOSURE ATTACHMENT</b> (Fill in boxes #1 through #9, #15 Date Rig Released and #32 and/or #33; attach this and the plat to the C-144 closure report in accordance with 19.15.17.13.K NMAC)	5. Lease Name or Unit Agreement Name Chaco 2206-02P 6. Well Number: #227H  <div style="text-align: right; font-weight: bold;">RCVD DEC 6 '13</div>
---	--

7. Type of Completion: <input checked="" type="checkbox"/> NEW WELL <input type="checkbox"/> WORKOVER <input type="checkbox"/> DEEPENING <input type="checkbox"/> PLUGBACK <input type="checkbox"/> DIFFERENT RESERVOIR <input type="checkbox"/> OTHER	OIL CONS. DIV.
---	----------------

8. Name of Operator WPX Energy Production, LLC	9. OGRID 120782 <span style="float: right; font-weight: bold;">DIST. 3</span>
---	--

10. Address of Operator 721 SOUTH MAIN AZTEC, NM 87410	11. Pool name or Wildcat LYBROOK GALLUP
---	--

12. Location	Unit Ltr	Section	Township	Range	Lot	Feet from the	N/S Line	Feet from the	E/W Line	County
<b>Surface:</b>	P	2	22N	6W		614'	SOUTH	817'	EAST	SANDOVAL
<b>BH:</b>	L	2	22N	6W		1503'	SOUTH	229'	WEST	SANDOVAL

13. Date Spudded 10/29/13	14. Date T.D. Reached 11/11/13	15. Date Rig Released 11/16/13	16. Date Completed (Ready to Produce) 12/1/13	17. Elevations (DF and RKB, RT, GR, etc.) 6944'
18. Total Measured Depth of Well 10634' MD 5503' TVD		19. Plug Back Measured Depth 10541' MD 5303' TVD		20. Was Directional Survey Made? YES
				21. Type Electric and Other Logs Run CBL

22. Producing Interval(s), of this completion - Top, Bottom, Name LYBROOK GALLUP: 6060'- 10532' MD	
---	--

23. CASING RECORD (Report all strings set in well)
--

CASING SIZE	WEIGHT LB./FT.	DEPTH SET	HOLE SIZE	CEMENTING RECORD	AMOUNT PULLED
9-5/8"	36#, J-55	437' MD	12-1/4"	230 sx - surface	
7"	23#, J-55	6036' MD	8-3/4"	680 sx- 740'	

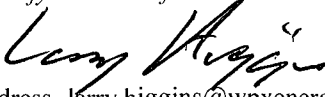
24. LINER RECORD					25. TUBING RECORD- File at later date		
SIZE	TOP	BOTTOM	SACKS CEMENT	SCREEN	SIZE	DEPTH SET	PACKER SET
4-1/2"	4739'	10621'	460		2-3/8"	5760'	

26. Perforation record (interval, size, and number) LYBROOK GALLUP: 6060'- 10532' MD  Mancos 15 <sup>th</sup> - 24, 0.40" holes Mancos 14 <sup>th</sup> - 24, 0.40" holes Mancos 13 <sup>th</sup> - 24, 0.40" holes Mancos 12 <sup>th</sup> - 24, 0.40" holes Mancos 11 <sup>th</sup> - 24, 0.40" holes Mancos 10 <sup>th</sup> - 24, 0.40" holes Mancos 9 <sup>th</sup> - 24, 0.40" holes Mancos 8 <sup>th</sup> - 24, 0.40" holes Mancos 7 <sup>th</sup> - 24, 0.40" holes Mancos 6 <sup>th</sup> - 24, 0.40" holes Mancos 5 <sup>th</sup> - 24, 0.40" holes Mancos 4 <sup>th</sup> - 24, 0.40" holes Mancos 3 <sup>rd</sup> - 24, 0.40" holes Mancos 2 <sup>nd</sup> - 24, 0.40" holes Mancos 1 <sup>st</sup> - 18, 0.40" holes RSI TOOL @ 10532'	27. ACID, SHOT, FRACTURE, CEMENT, SQUEEZE, ETC. <table border="1" style="width:100%; border-collapse: collapse;"> <tr> <th>DEPTH INTERVAL</th> <th>AMOUNT AND KIND MATERIAL USED</th> </tr> <tr><td>6060'-6264'</td><td>233,900# , 20/40 PSA Sand</td></tr> <tr><td>6338'-6524'</td><td>237,600# , 20/40 PSA Sand</td></tr> <tr><td>6600'-6804'</td><td>240,400# , 20/40 PSA Sand</td></tr> <tr><td>6896'-7080'</td><td>237,000# , 20/40 PSA Sand</td></tr> <tr><td>7148'-7332'</td><td>240,300# , 20/40 PSA Sand</td></tr> <tr><td>7444'-7702'</td><td>198,000# , 20/40 PSA Sand</td></tr> <tr><td>7798'-8032'</td><td>197,200# , 20/40 PSA Sand</td></tr> <tr><td>8134'-8348'</td><td>199,200# , 20/40 PSA Sand</td></tr> <tr><td>8462'-8666'</td><td>193,600# , 20/40 PSA Sand</td></tr> <tr><td>8736'-8950'</td><td>200,000# , 20/40 PSA Sand</td></tr> <tr><td>9028'-9250'</td><td>201,100# , 20/40 PSA Sand</td></tr> <tr><td>9335'-9552'</td><td>200,900# , 20/40 PSA Sand</td></tr> <tr><td>9670'-9888'</td><td>200,700# , 20/40 PSA Sand</td></tr> <tr><td>9988'-10212'</td><td>191,200 # 20/40 PSA Sand</td></tr> <tr><td>10310'-10532'</td><td>204,400 # 20/40 PSA Sand</td></tr> </table>	DEPTH INTERVAL	AMOUNT AND KIND MATERIAL USED	6060'-6264'	233,900# , 20/40 PSA Sand	6338'-6524'	237,600# , 20/40 PSA Sand	6600'-6804'	240,400# , 20/40 PSA Sand	6896'-7080'	237,000# , 20/40 PSA Sand	7148'-7332'	240,300# , 20/40 PSA Sand	7444'-7702'	198,000# , 20/40 PSA Sand	7798'-8032'	197,200# , 20/40 PSA Sand	8134'-8348'	199,200# , 20/40 PSA Sand	8462'-8666'	193,600# , 20/40 PSA Sand	8736'-8950'	200,000# , 20/40 PSA Sand	9028'-9250'	201,100# , 20/40 PSA Sand	9335'-9552'	200,900# , 20/40 PSA Sand	9670'-9888'	200,700# , 20/40 PSA Sand	9988'-10212'	191,200 # 20/40 PSA Sand	10310'-10532'	204,400 # 20/40 PSA Sand
DEPTH INTERVAL	AMOUNT AND KIND MATERIAL USED																																
6060'-6264'	233,900# , 20/40 PSA Sand																																
6338'-6524'	237,600# , 20/40 PSA Sand																																
6600'-6804'	240,400# , 20/40 PSA Sand																																
6896'-7080'	237,000# , 20/40 PSA Sand																																
7148'-7332'	240,300# , 20/40 PSA Sand																																
7444'-7702'	198,000# , 20/40 PSA Sand																																
7798'-8032'	197,200# , 20/40 PSA Sand																																
8134'-8348'	199,200# , 20/40 PSA Sand																																
8462'-8666'	193,600# , 20/40 PSA Sand																																
8736'-8950'	200,000# , 20/40 PSA Sand																																
9028'-9250'	201,100# , 20/40 PSA Sand																																
9335'-9552'	200,900# , 20/40 PSA Sand																																
9670'-9888'	200,700# , 20/40 PSA Sand																																
9988'-10212'	191,200 # 20/40 PSA Sand																																
10310'-10532'	204,400 # 20/40 PSA Sand																																

CONFIDENTIAL

28.

**PRODUCTION**

Date First Production 12/1/13		Production Method ( <i>Flowing, gas lift, pumping - Size and type pump</i> )			Well Status ( <i>Prod. or Shut-in</i> )		
		Flowing			Producing		
Date of Test	Hours Tested	Choke Size	Prod'n For Test Period	Oil - Bbl	Gas - MCF	Water - Bbl.	Gas - Oil Ratio
12/2/13	24 hrs	2"		593		7	
Flow Tubing Press. n/a	Casing Pressure 200	Calculated 24- Hour Rate	Oil - Bbl.	Gas - MCF	Water - Bbl.	Oil Gravity - API - ( <i>Corr.</i> )	
29. Disposition of Gas ( <i>Sold, used for fuel, vented, etc.</i> )						30. Test Witnessed By	
Vented – Not of pipeline quality. Will be put to sales as soon as possible.							
31. List Attachments WBD							
32. If a temporary pit was used at the well, attach a plat with the location of the temporary pit.							
33. If an on-site burial was used at the well, report the exact location of the on-site burial:							
			Latitude	Longitude		NAD 1927 1983	
<i>I hereby certify that the information shown on both sides of this form is true and complete to the best of my knowledge and belief</i>							
Signature 		Printed Name Larry Higgins		Title Permit Suprv		Date 12/5/13	
E-mail Address- larry.higgins@wpenergy.com (505)333-1808							

# INSTRUCTIONS

This form is to be filed with the appropriate District Office of the Division not later than 20 days after the completion of any newly-drilled or deepened well and not later than 60 days after completion of closure. When submitted as a completion report, this shall be accompanied by one copy of all electrical and radio-activity logs run on the well and a summary of all special tests conducted, including drill stem tests. All depths reported shall be measured depths. In the case of directionally drilled wells, true vertical depths shall also be reported. For multiple completions, items 11, 12 and 26-31 shall be reported for each zone.

## INDICATE FORMATION TOPS IN CONFORMANCE WITH GEOGRAPHICAL SECTION OF STATE

Southeastern New Mexico		Northwestern New Mexico	
T. Anhy_____	T. Canyon_____	T. Ojo Alamo <b>1278'</b>	T. Penn A"_____
T. Salt_____	T. Strawn_____	T. Kirtland <b>1553'</b>	T. Penn. "B"_____
B. Salt_____	T. Atoka_____	T. Fruitland_____	T. Penn. "C"_____
T. Yates_____	T. Miss_____	T. Pictured Cliffs <b>1851'</b>	T. Penn. "D"_____
T. 7 Rivers_____	T. Devonian_____	T. Cliff House <b>3475'</b>	T. Leadville_____
T. Queen_____	T. Silurian_____	T. Menefee <b>3498'</b>	T. Madison_____
T. Grayburg_____	T. Montoya_____	T. Point Lookout <b>4285'</b>	T. Elbert_____
T. San Andres_____	T. Simpson_____	T. Mancos <b>4480'</b>	T. McCracken_____
T. Glorieta_____	T. McKee_____	T. Gallup <b>4891'</b>	T. Ignacio Otzte_____
T. Paddock_____	T. Ellenburger_____	Base Greenhorn_____	T. Granite_____
T. Blinebry_____	T. Gr. Wash_____	T. Dakota_____	
T. Tubb_____	T. Delaware Sand_____	T. Morrison_____	
T. Drinkard_____	T. Bone Springs_____	T. Todilto_____	
T. Abo_____	T. _____	T. Entrada_____	
T. Wolfcamp_____	T. _____	T. Wingate_____	
T. Penn_____	T. _____	T. Chinle_____	
T. Cisco (Bough C)_____	T. _____	T. Permian_____	

### OIL OR GAS SANDS OR ZONES

No. 1, from.....to.....  
 No. 2, from.....to.....  
 No. 3, from.....to.....  
 No. 4, from.....to.....

### IMPORTANT WATER SANDS

Include data on rate of water inflow and elevation to which water rose in hole.  
 No. 1, from.....to.....feet.....  
 No. 2, from.....to.....feet.....  
 No. 3, from.....to.....feet.....

### LITHOLOGY RECORD (Attach additional sheet if necessary)

From	To	Thickness In Feet	Lithology	From	To	Thickness In Feet	Lithology
------	----	----------------------	-----------	------	----	----------------------	-----------

8'1510  
 'AID 'SNOJ TIO  
 RT, 9'30 008

# CHACO 2206-02P #227H

## LYBROOK GALLUP Horizontal

(page 1)

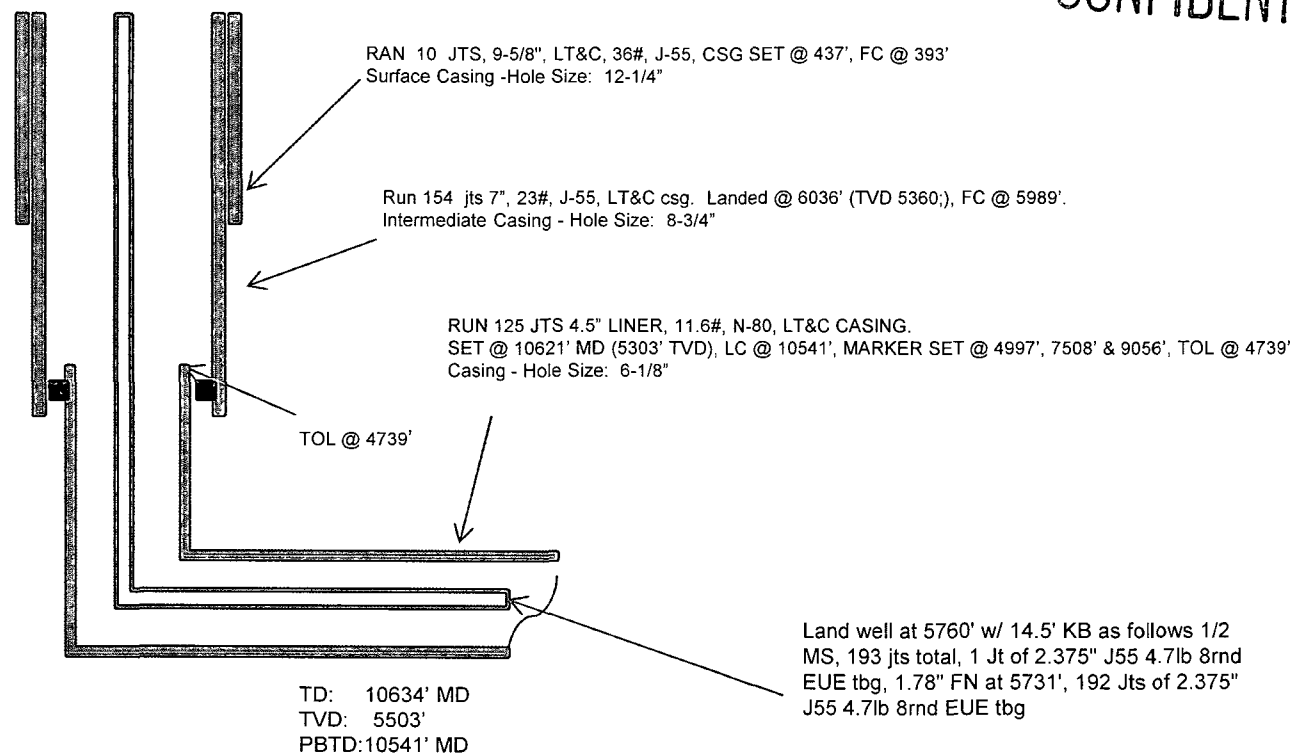
Spud: 10/29/13  
 Completed: 12/4/13

**Surface Location:** 614' FSL & 817' FEL  
 SE/4 SE/4 Section 2 (P), T22N, R6W

**BHL:** 1503' FSL & 229' FWL  
 NW/4 SW/4 Section 2 (L), T22N, R6W

SANDOVAL, NM  
**Elevation:** 6944' GR  
**API:** 30-043-21167

<i>Tops</i>	<i>MD</i>	<i>TVD</i>
Ojo Alamo	1278'	1272'
Kirtland	1553'	1535'
Pictured Cliffs	1851'	1813'
Lewis	1955'	1909'
Chacra	2296'	2226'
Cliff House	3475'	3319'
Menefee	3498'	3341'
Point Lookout	4285'	4071'
Mancos	4480'	4250'
Gallup	4891'	4634'



CONFIDENTIAL

HOLE SIZE	CASING	CEMENT	VOLUME	CMT TOP
12-1/4"	9-5/8"	230 sx	269 cu.ft.	Surface
8-3/4"	7"	680 sx	8481 cu.ft.	740
6-1/8"	4-1/2"	460 sx	628 cu. ft.	4739

Lg 12/5/13

Gallup 15th:  
6060'-6264'-  
with 24, 0.40"  
holes. Frac Gallup  
15<sup>th</sup> stage with  
233,900# , 20/40  
PSA Sand

Gallup 11th:  
7148'-7332'-  
with 24, 0.40"  
holes. Frac Gallup  
11<sup>th</sup> stage with  
240,300# , 20/40  
PSA Sand

Gallup 14th:  
6338'-6524'-  
with 24, 0.40"  
holes. Frac Gallup  
14<sup>th</sup> stage with  
237,600# , 20/40  
PSA Sand

Gallup 12th:  
6896'-7080'-  
with 24, 0.40" holes.  
Frac Gallup 12<sup>th</sup>  
stage with 237,000#  
, 20/40 PSA Sand

Gallup 13th:  
6600', 6804'  
with 24, 0.40"  
holes. Frac Gallup  
13<sup>th</sup> stage with  
240,400# , 20/40  
PSA Sand

Gallup 10th:  
7444'-7702'-  
with 24, 0.40"  
holes. Frac  
Gallup 10<sup>th</sup>  
stage with  
198,000# ,  
20/40 PSA  
Sand

Gallup 9th:  
7798'-8032'-  
with 24, 0.40"  
holes. Frac Gallup  
9<sup>th</sup> stage with  
197,200# , 20/40  
PSA Sand

Gallup 8th:  
8134'-8348'-  
with 24, 0.40"  
holes. Frac Gallup  
8<sup>th</sup> stage with  
199,200# , 20/40  
PSA Sand

Gallup 7th:  
8462'-8666'-  
with 24, 0.40"  
holes. Frac  
Gallup 7<sup>th</sup>  
stage with  
193,600# ,  
20/40 PSA  
Sand

Gallup 6th:  
8736'-8950'-  
with 24, 0.40"  
holes. Frac  
Gallup 6<sup>th</sup> stage  
with 200,000# ,  
20/40 PSA  
Sand

Gallup 5th:  
9028'-9250'-  
with 24, 0.40"  
holes. Frac  
Gallup 5<sup>th</sup> stage  
with 201,100# ,  
20/40 PSA  
Sand

Gallup 4th:  
9335'-9552'-  
with 24, 0.40"  
holes. Frac  
Gallup 4<sup>th</sup> stage  
with 200,900# ,  
20/40 PSA  
Sand

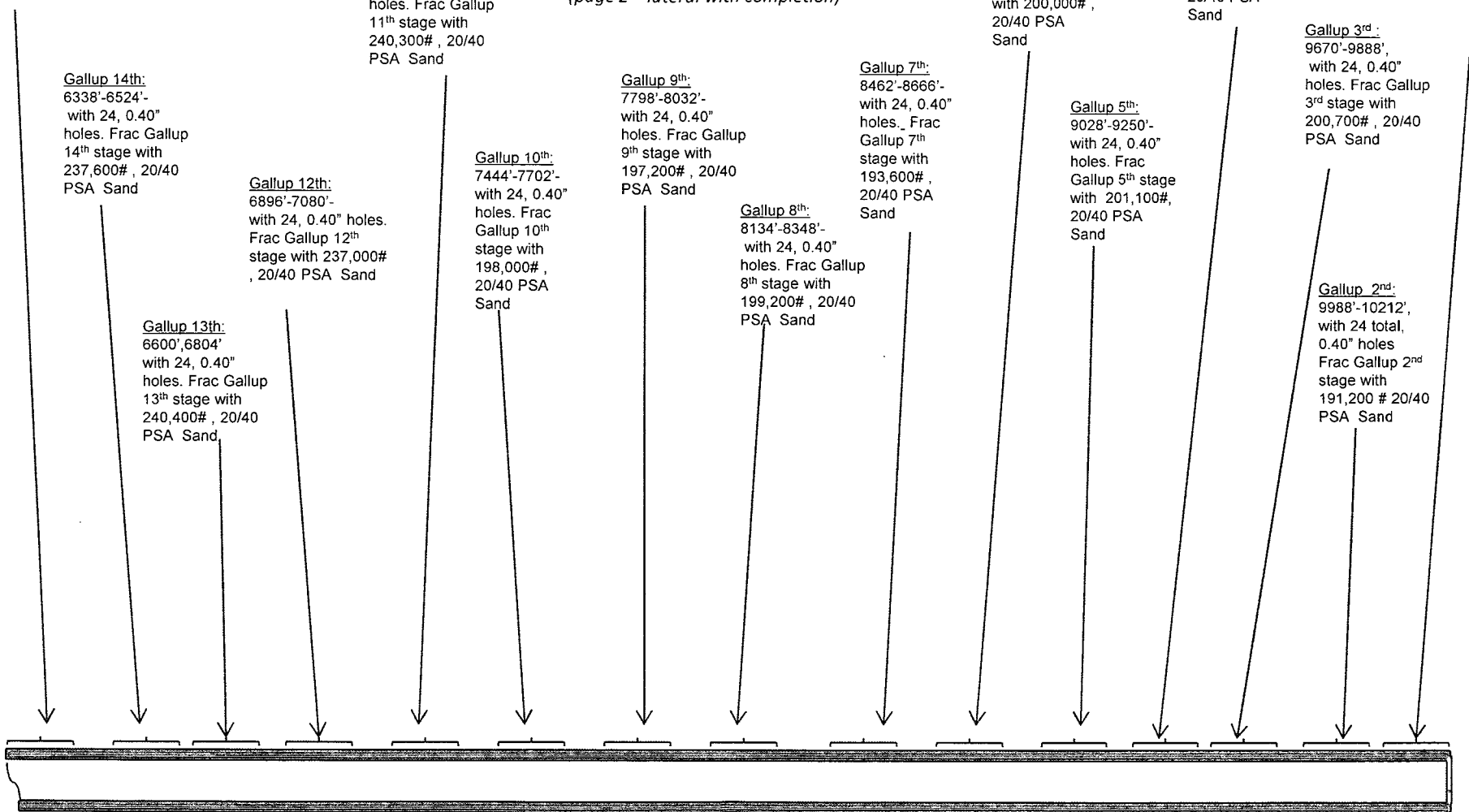
Gallup 3rd:  
9670'-9888',  
with 24, 0.40"  
holes. Frac Gallup  
3<sup>rd</sup> stage with  
200,700# , 20/40  
PSA Sand

Gallup 2nd:  
9988'-10212',  
with 24 total,  
0.40" holes  
Frac Gallup 2<sup>nd</sup>  
stage with  
191,200 # 20/40  
PSA Sand

Gallup 1st:  
10310'-10432 +  
RSI tool @  
10532" with  
204,400 # 20/40  
PSA Sand

## CHACO 2206-02P #227H LYBROOK GALLUP Horizontal

(page 2 – lateral with completion)



See page 1 for upper portion of hole