

Submit 1 Copy To Appropriate District Office  
District I – (575) 393-6161  
1625 N. French Dr., Hobbs, NM 88240  
District II – (575) 748-1283  
811 S. First St., Artesia, NM 88210  
District III – (505) 334-6178  
1000 Rio Brazos Rd., Aztec, NM 87410  
District IV – (505) 476-3460  
1220 S. St. Francis Dr., Santa Fe, NM 87505

State of New Mexico  
Energy, Minerals and Natural Resources

OIL CONSERVATION DIVISION  
1220 South St. Francis Dr.  
Santa Fe, NM 87505

Form C-103  
Revised August 1, 2011

<b>SUNDRY NOTICES AND REPORTS ON WELLS</b> (DO NOT USE THIS FORM FOR PROPOSALS TO DRILL OR TO DEEPEN OR PLUG BACK TO A DIFFERENT RESERVOIR. USE "APPLICATION FOR PERMIT" (FORM C-101) FOR SUCH PROPOSALS.)		WELL API NO. 30-045-35474
1. Type of Well: Oil Well <input checked="" type="checkbox"/> Gas Well <input type="checkbox"/> Other <input type="checkbox"/>		5. Indicate Type of Lease STATE <input checked="" type="checkbox"/> FEE <input type="checkbox"/>
2. Name of Operator WPX Energy Production, LLC		6. State Oil & Gas Lease No. NM L 2986-1 & NM LG 1034-9
3. Address of Operator P. O. Box 640, Aztec, NM 87410 (505) 333-1822		7. Lease Name or Unit Agreement Name Chaco 2408-36P
4. Well Location Unit Letter <u>P</u> : <u>782'</u> feet from the <u>S</u> line and <u>244'</u> feet from the <u>E</u> line Section <u>36</u> Township <u>24N</u> Range <u>8W</u> NMPM County <u>Sandoval</u>		8. Well Number <u>#143H</u>
11. Elevation (Show whether DR, RKB, RT, GR, etc.) 6922' GR		9. OGRID Number 120782
		10. Pool name or Wildcat Lybrook Gallup

12. Check Appropriate Box to Indicate Nature of Notice, Report or Other Data

NOTICE OF INTENTION TO:		SUBSEQUENT REPORT OF:	
PERFORM REMEDIAL WORK <input type="checkbox"/>	PLUG AND ABANDON <input type="checkbox"/>	REMEDIAL WORK <input type="checkbox"/>	ALTERING CASING <input type="checkbox"/>
TEMPORARILY ABANDON <input type="checkbox"/>	CHANGE PLANS <input type="checkbox"/>	COMMENCE DRILLING OPNS. <input type="checkbox"/>	P AND A <input type="checkbox"/>
PULL OR ALTER CASING <input type="checkbox"/>	MULTIPLE COMPL <input type="checkbox"/>	CASING/CEMENT JOB <input type="checkbox"/>	
DOWNHOLE COMMINGLE <input type="checkbox"/>			
OTHER: <input type="checkbox"/>		OTHER: Supplemental Completion <input checked="" type="checkbox"/>	

13. Describe proposed or completed operations. (Clearly state all pertinent details, and give pertinent dates, including estimated date of starting any proposed work).  
SEE RULE 19.15.7.14 NMAC. For Multiple Completions: Attach wellbore diagram of proposed completion or recompletion.

3/5/14 – MIRU AWS #395 to pull tie back string and install gas lift.

3/6/14 TOH with existing production tubing

3/7/14 – Set 4-1/2" CIBP @ 5950'. Pull 4-1/2" liner assy out of liner and lay down 10 jts 4-1/2" casing

3/8/14 – TOH lay down 147 joints of 4 1/2" 11.6# N-80 casing. CO well

3/11/14 – DO CIBP @ 5950'

3/12/14 – TIH with 1/2 mule shoe, 1 joint 2 3/8" tubing, WXN profile nipple, 9 joints 2 3/8" tubing, x- over from 2 3/8" X 2 7/8", 1 joint 2 7/8" tubing, 7" Arrow set 1-X packer @ 5820' with T-2 on/off tool, 2 joints 2 7/8" 6.5#, eue 8rd tubing, gas lift mandrel #1 @ 5749', 26 joints 2 7/8" 6.5#, eue 8rd tubing, gas lift mandrel #2 @ 4945', 30 joints 2 7/8" 6.5#, eue 8rd tubing, gas lift mandrel #3 @ 4013', 36 joints 2 7/8" 6.5#, eue 8rd tubing, gas lift mandrel #4 @ 2895', 43 joints 2 7/8" 6.5#, eue 8rd tubing, gas lift mandrel #5 @ 1556', 50 43 joints 2 7/8" 6.5#, eue 8rd tubing to surface. EOT @ 6168'.

Spud Date: 9/21/13

Rig Release Date: 10/8/13

I hereby certify that the information above is true and complete to the best of my knowledge and belief.

SIGNATURE Larry Higgins TITLE Regulatory Specialist DATE 4/22/14

Type or print name Larry Higgins E-mail address: Larry.Higgins@wpenergy.com PHONE: (505) 333-1808  
For State Use Only

APPROVED BY: Bob Bell TITLE Deputy Oil & Gas Inspector, District #3 DATE 4/29/14  
Conditions of Approval (if any): AV

# CHACO 2408-36P #143H

## LYBROOK GALLUP Horizontal

(page 1)

Spud: 9/21/13

Completed: 11/24/13

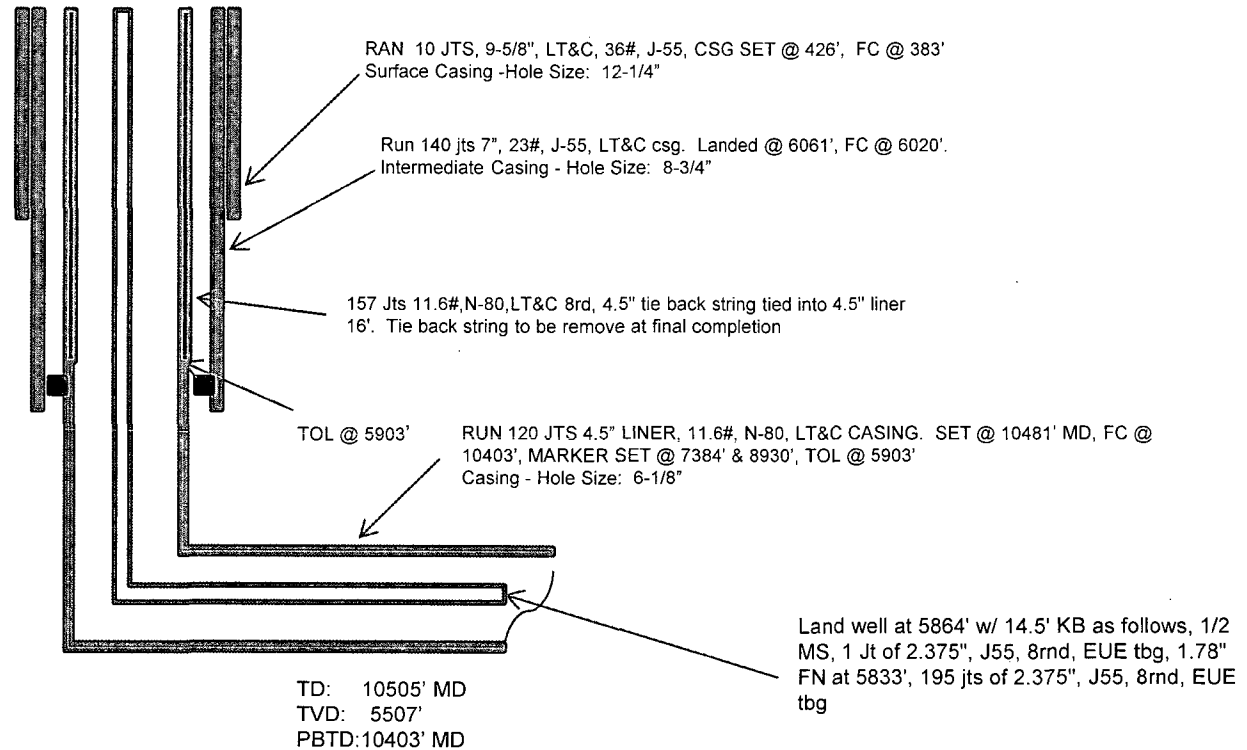
**Surface Location:** 782' FSL & 244' FEL  
SE/4 SE/4 Section 36 (P), T24N, R8W

**BHL:** 2254' FSL & 230' FWL  
NW/4 SW/4 Section 36 (L), T24N, R8W

San Juan., NM  
**Elevation:** 6922' GR  
**API:** 30-045-35474

### Pre Gas lift

<i>Tops</i>	<i>MD</i>	<i>TVD</i>
Ojo Alamo	1205'	1201'
Kirtland	1359'	1352'
Pictured Cliffs	1923'	1897'
Lewis	2090'	2056'
Chacra	2368'	2321'
Cliff House	3520'	3420'
Menefee	3566'	3463'
Point Lookout	4371'	4231'
Mancos	4643'	4490'
Gallup	5020'	4850'



HOLE SIZE	CASING	CEMENT	VOLUME	CMT TOP
12-1/4"	9-5/8"	230 sx	269 cu.ft.	Surface
8-3/4"	7"	780 sx	946 cu. ft.	Surface
6-1/8"	4-1/2"	355 sx	503 cu. ft.	

Lg 11/6/13

Gallup 15<sup>th</sup>:  
6153'-6350'-  
with 24, 0.40"  
holes. Frac Gallup  
15<sup>th</sup> stage with  
260,800# , 20/40  
PSA Sand

Gallup 11<sup>th</sup>:  
7302'-7515'-  
with 24, 0.40"  
holes. Frac Gallup  
11<sup>th</sup> stage with  
211,100# , 20/40  
PSA Sand

Gallup 14<sup>th</sup>:  
6426'-6647'-  
with 24, 0.40"  
holes. Frac Gallup  
14<sup>th</sup> stage with  
262,600# , 20/40  
PSA Sand

Gallup 12<sup>th</sup>:  
7009'-7223'-  
with 24, 0.40" holes.  
Frac Gallup 12<sup>th</sup>  
stage with 266,300#  
, 20/40 PSA Sand

Gallup 13<sup>th</sup>:  
6719'-6943'-  
with 24, 0.40"  
holes. Frac Gallup  
13<sup>th</sup> stage with  
261,400# , 20/40  
PSA Sand

Gallup 10<sup>th</sup>:  
7583'-7794'-  
with 24, 0.40"  
holes. Frac  
Gallup 10<sup>th</sup>  
stage with  
215,100# ,  
20/40 PSA  
Sand

Gallup 9<sup>th</sup>:  
7877'-8085'-  
with 24, 0.40"  
holes. Frac Gallup  
9<sup>th</sup> stage with  
215,200# , 20/40  
PSA Sand

Gallup 8<sup>th</sup>:  
8182'-8356'-  
with 18, 0.40"  
holes. Frac Gallup  
8<sup>th</sup> stage with  
215,300# , 20/40  
PSA Sand

Gallup 7<sup>th</sup>:  
8420'-8625'-  
with 24, 0.40"  
holes. Frac  
Gallup 7<sup>th</sup>  
stage with  
212,800# ,  
20/40 PSA  
Sand

Gallup 6<sup>th</sup>:  
8698'-8933'-  
with 24, 0.40"  
holes. Frac  
Gallup 6<sup>th</sup> stage  
with 214,800# ,  
20/40 PSA  
Sand

Gallup 5<sup>th</sup>:  
8998'-9209'-  
with 24, 0.40"  
holes. Frac  
Gallup 5<sup>th</sup> stage  
with 214,600# ,  
20/40 PSA  
Sand

Gallup 4<sup>th</sup>:  
9272'-9499'-  
with 24, 0.40"  
holes. Frac  
Gallup 4<sup>th</sup> stage  
with 215,200# ,  
20/40 PSA  
Sand

Gallup 3<sup>rd</sup>:  
9586'-9813',  
with 24, 0.40"  
holes. Frac Gallup  
3<sup>rd</sup> stage with  
215,900# , 20/40  
PSA Sand

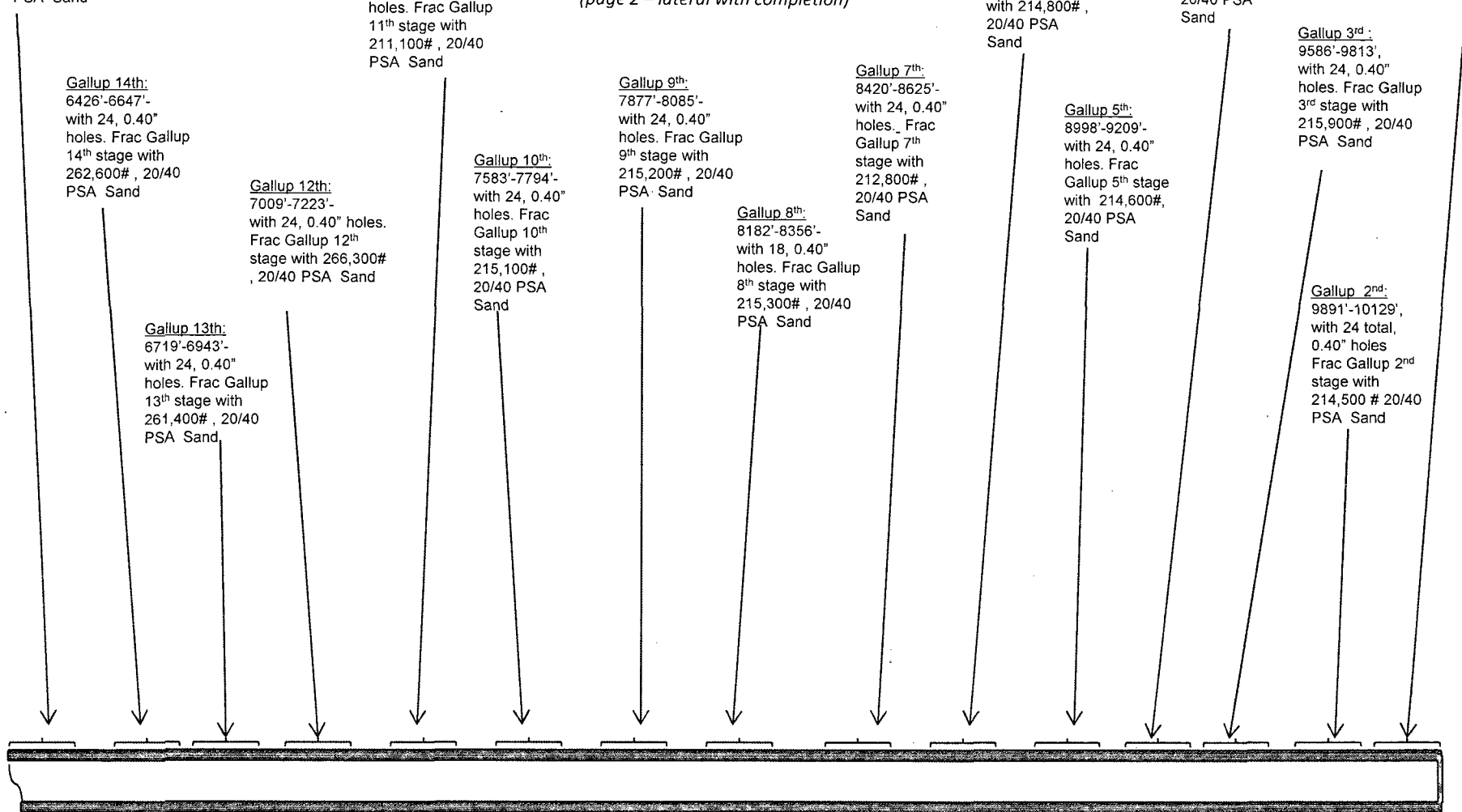
Gallup 2<sup>nd</sup>:  
9891'-10129',  
with 24 total,  
0.40" holes  
Frac Gallup 2<sup>nd</sup>  
stage with  
214,500 # 20/40  
PSA Sand

Gallup 1<sup>st</sup>:  
10198'-10392'  
with 215,500 #  
20/40 PSA  
Sand

## CHACO 2408-36P #143H

### LYBROOK GALLUP Horizontal

(page 2 – lateral with completion)



See page 1 for upper portion of hole

# CHACO 2408-36P #143H

## LYBROOK GALLUP Horizontal

(page 1)

Spud: 9/21/13

Completed: 11/24/13

Gas Lift: 3/12/14

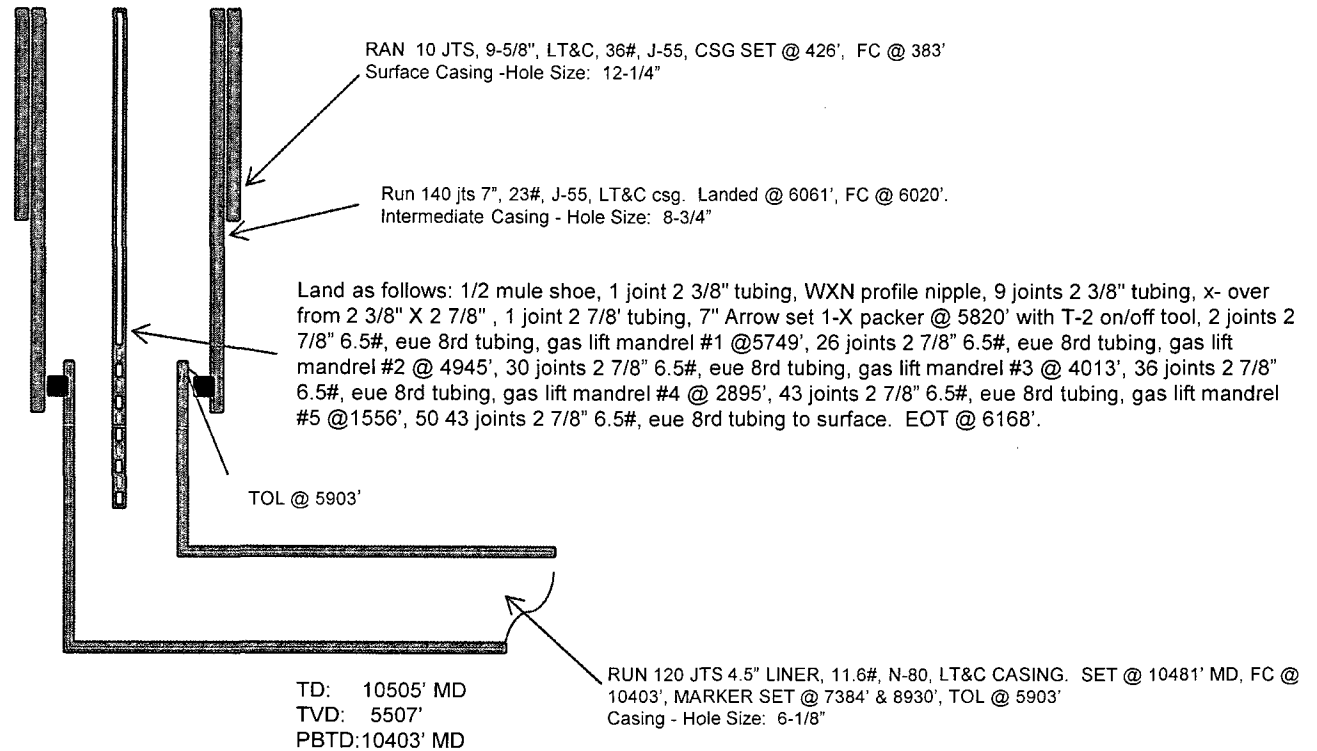
**Surface Location:** 782' FSL & 244' FEL  
SE/4 SE/4 Section 36 (P), T24N, R8W

**BHL:** 2254' FSL & 230' FWL  
NW/4 SW/4 Section 36 (L), T24N, R8W

San Juan., NM  
**Elevation:** 6922' GR  
**API:** 30-045-35474

<i>Tops</i>	<i>MD</i>	<i>TVD</i>
Ojo Alamo	1205'	1201'
Kirtland	1359'	1352'
Pictured Cliffs	1923'	1897'
Lewis	2090'	2056'
Chacra	2368'	2321'
Cliff House	3520'	3420'
Menefee	3566'	3463'
Point Lookout	4371'	4231'
Mancos	4643'	4490'
Gallup	5020'	4850'

### Post Gas Lift



HOLE SIZE	CASING	CEMENT	VOLUME	CMT TOP
12-1/4"	9-5/8"	230 sx	269 cu.ft.	Surface
8-3/4"	7"	780 sx	946 cu. ft.	Surface
6-1/8"	4-1/2"	355 sx	503 cu. ft.	

LH 4/22/14

Gallup 15th:  
6153'-6350'-  
with 24, 0.40"  
holes. Frac Gallup  
15th stage with  
260,800# , 20/40  
PSA Sand

Gallup 11th:  
7302'-7515'-  
with 24, 0.40"  
holes. Frac Gallup  
11th stage with  
211,100# , 20/40  
PSA Sand

Gallup 14th:  
6426'-6647'-  
with 24, 0.40"  
holes. Frac Gallup  
14th stage with  
262,600# , 20/40  
PSA Sand

Gallup 12th:  
7009'-7223'-  
with 24, 0.40" holes.  
Frac Gallup 12th  
stage with 266,300#  
, 20/40 PSA Sand

Gallup 13th:  
6719'-6943'-  
with 24, 0.40"  
holes. Frac Gallup  
13th stage with  
261,400# , 20/40  
PSA Sand

Gallup 10th:  
7583'-7794'-  
with 24, 0.40"  
holes. Frac  
Gallup 10th  
stage with  
215,100# ,  
20/40 PSA  
Sand

Gallup 9th:  
7877'-8085'-  
with 24, 0.40"  
holes. Frac Gallup  
9th stage with  
215,200# , 20/40  
PSA Sand

Gallup 8th:  
8182'-8356'-  
with 18, 0.40"  
holes. Frac Gallup  
8th stage with  
215,300# , 20/40  
PSA Sand

Gallup 7th:  
8420'-8625'-  
with 24, 0.40"  
holes. Frac  
Gallup 7th  
stage with  
212,800# ,  
20/40 PSA  
Sand

Gallup 6th:  
8698'-8933'-  
with 24, 0.40"  
holes. Frac  
Gallup 6th stage  
with 214,800# ,  
20/40 PSA  
Sand

Gallup 5th:  
8998'-9209'-  
with 24, 0.40"  
holes. Frac  
Gallup 5th stage  
with 214,600# ,  
20/40 PSA  
Sand

Gallup 4th:  
9272'-9499'-  
with 24, 0.40"  
holes. Frac  
Gallup 4th stage  
with 215,200# ,  
20/40 PSA  
Sand

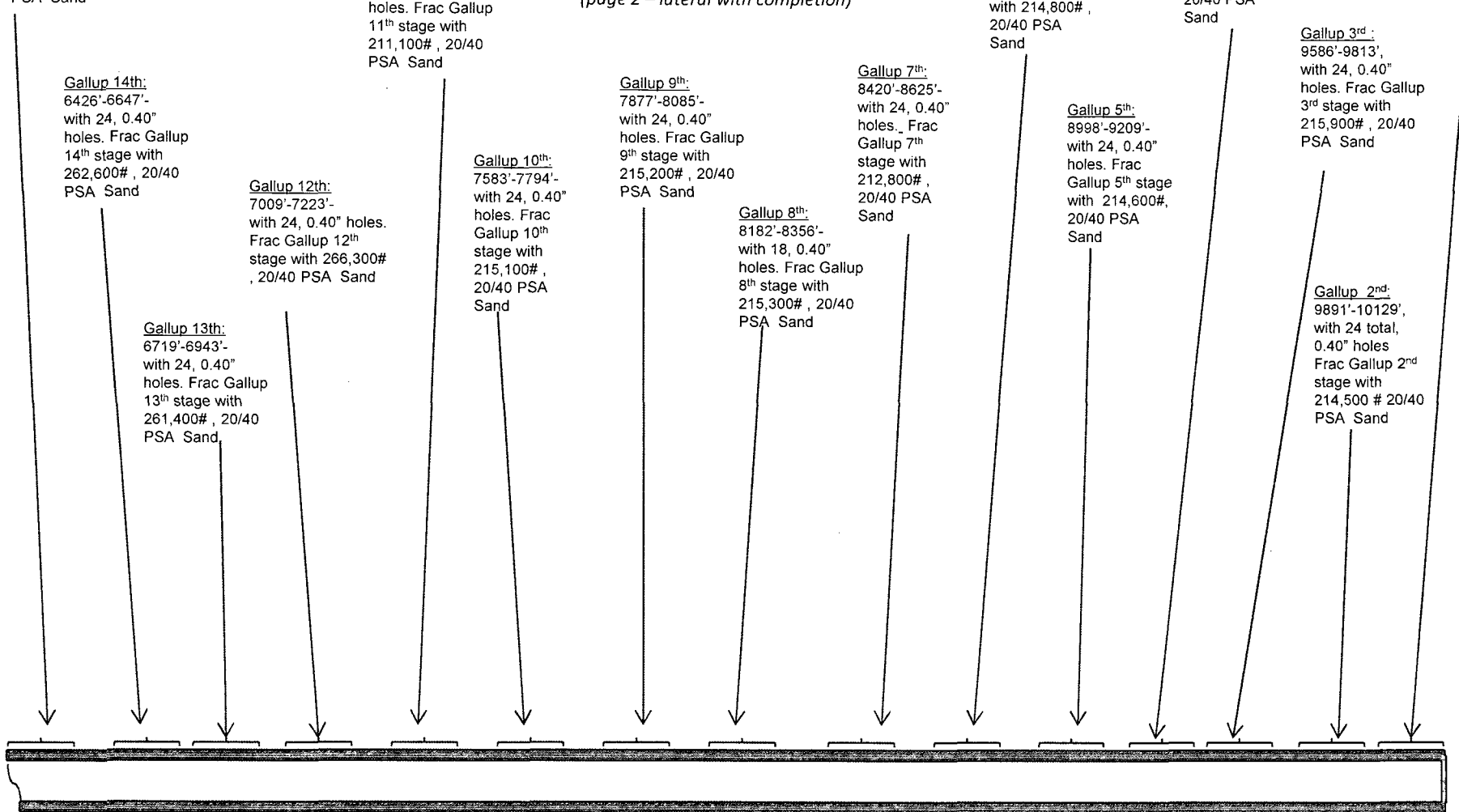
Gallup 3rd :  
9586'-9813',  
with 24, 0.40"  
holes. Frac Gallup  
3rd stage with  
215,900# , 20/40  
PSA Sand

Gallup 2nd:  
9891'-10129',  
with 24 total,  
0.40" holes  
Frac Gallup 2nd  
stage with  
214,500 # 20/40  
PSA Sand

Gallup 1st:  
10198'-10392'  
with 215,500 #  
20/40 PSA  
Sand

## CHACO 2408-36P #143H LYBROOK GALLUP Horizontal

(page 2 – lateral with completion)



See page 1 for upper portion of hole