

District I  
1625 N. French Dr., Hobbs, NM 88240  
District II  
811 S. First St., Artesia, NM 88210  
District III  
1000 Rio Brazos Road, Aztec, NM 87410  
District IV  
1220 S. St. Francis Dr., Santa Fe, NM 87505

State of New Mexico  
Energy Minerals and Natural Resources  
Department  
Oil Conservation Division  
1220 South St. Francis Dr.  
Santa Fe, NM 87505

Form C-144  
Revised June 6, 2013

For temporary pits, below-grade tanks, and multi-well fluid management pits, submit to the appropriate NMOCD District Office.  
For permanent pits submit to the Santa Fe Environmental Bureau office and provide a copy to the appropriate NMOCD District Office.

Pit, Below-Grade Tank, or  
Proposed Alternative Method Permit or Closure Plan Application

- Type of action: ☐ Below grade tank registration  
☐ Permit of a pit or proposed alternative method  
☐ Closure of a pit, below-grade tank, or proposed alternative method  
☒ Modification to an existing permit/or registration  
☐ Closure plan only submitted for an existing permitted or non-permitted pit, below-grade tank, or proposed alternative method

**Instructions:** Please submit one application (Form C-144) per individual pit, below-grade tank or alternative request

Please be advised that approval of this request does not relieve the operator of liability should operations result in pollution of surface water, ground water or the environment. Nor does approval relieve the operator of its responsibility to comply with any other applicable governmental authority's rules, regulations or ordinances.

1. Operator: ENERVEST OPERATING OGRID #: 222374  
Address: 2700 FARMINGTON AVE BLD-K SUITE 1 FARMINGTON NM 87401  
Facility or well name: JICABILLA GAS COM C-1E - BLOW PIT  
API Number: 30-039-22029 OCD Permit Number: \_\_\_\_\_  
U/L or Qtr/Qtr F Section 32 Township 26N Range 5W County: RIO ARRIBA  
Center of Proposed Design: Latitude 36.44633 Longitude -107.38603 NAD: ☐ 1927 ☒ 1983  
Surface Owner: ☐ Federal ☐ State ☐ Private ☒ Tribal Trust or Indian Allotment

2. ☒ **Pit:** Subsection F, G or J of 19.15.17.11 NMAC  
Temporary: ☐ Drilling ☐ Workover  
☐ Permanent ☐ Emergency ☐ Cavitation ☐ P&A ☐ Multi-Well Fluid Management Low Chloride Drilling Fluid ☐ yes ☐ no  
☐ Lined ☐ Unlined Liner type: Thickness \_\_\_\_\_ mil ☐ LLDPE ☐ HDPE ☐ PVC ☐ Other \_\_\_\_\_  
☐ String-Reinforced  
Liner Seams: ☐ Welded ☐ Factory ☐ Other \_\_\_\_\_ Volume: \_\_\_\_\_ bbl Dimensions: L \_\_\_\_\_ x W \_\_\_\_\_ x D \_\_\_\_\_

3. ☒ **Below-grade tank:** Subsection I of 19.15.17.11 NMAC  
Volume: 95 bbl Type of fluid: PRODUCED WATER RCVD APR 16 '14  
Tank Construction material: STEEL OIL CONS. DIV.  
☐ Secondary containment with leak detection ☐ Visible sidewalls, liner, 6-inch lift and automatic overflow shut-off DIST. 3  
☐ Visible sidewalls and liner ☒ Visible sidewalls only ☒ Other BGT TO BE CLOSED PER NEW PLAN  
Liner type: Thickness \_\_\_\_\_ mil ☐ HDPE ☐ PVC ☐ Other \_\_\_\_\_

4. ☐ **Alternative Method:**  
Submittal of an exception request is required. Exceptions must be submitted to the Santa Fe Environmental Bureau office for consideration of approval.

5. **Fencing:** Subsection D of 19.15.17.11 NMAC (Applies to permanent pits, temporary pits, and below-grade tanks)  
☐ Chain link, six feet in height, two strands of barbed wire at top (Required if located within 1000 feet of a permanent residence, school, hospital, institution or church)  
☐ Four foot height, four strands of barbed wire evenly spaced between one and four feet  
☒ Alternate. Please specify 4 FT HOG WIRE

6.

**Netting:** Subsection E of 19.15.17.11 NMAC (*Applies to permanent pits and permanent open top tanks*)

- ☒ Screen ☐ Netting ☐ Other \_\_\_\_\_
- ☐ Monthly inspections (If netting or screening is not physically feasible)

7.

**Signs:** Subsection C of 19.15.17.11 NMAC

- ☐ 12"x 24", 2" lettering, providing Operator's name, site location, and emergency telephone numbers
- ☒ Signed in compliance with 19.15.16.8 NMAC

8.

**Variances and Exceptions:**

Justifications and/or demonstrations of equivalency are required. Please refer to 19.15.17 NMAC for guidance.

***Please check a box if one or more of the following is requested, if not leave blank:***

- ☐ Variance(s): Requests must be submitted to the appropriate division district for consideration of approval.
- ☐ Exception(s): Requests must be submitted to the Santa Fe Environmental Bureau office for consideration of approval.

9.

**Siting Criteria (regarding permitting):** 19.15.17.10 NMAC

***Instructions: The applicant must demonstrate compliance for each siting criteria below in the application. Recommendations of acceptable source material are provided below. Siting criteria does not apply to drying pads or above-grade tanks.***

**General siting**

**Ground water is less than 25 feet below the bottom of a low chloride temporary pit or below-grade tank.**

- ☒ NM Office of the State Engineer - iWATERS database search; ☐ USGS; ☐ Data obtained from nearby wells

☐ Yes ☒ No  
☐ NA

**Ground water is less than 50 feet below the bottom of a Temporary pit, permanent pit, or Multi-Well Fluid Management pit .**

NM Office of the State Engineer - iWATERS database search; USGS; Data obtained from nearby wells

☐ Yes ☒ No  
☐ NA

Within incorporated municipal boundaries or within a defined municipal fresh water well field covered under a municipal ordinance adopted pursuant to NMSA 1978, Section 3-27-3, as amended. **(Does not apply to below grade tanks)**

- Written confirmation or verification from the municipality; Written approval obtained from the municipality

☐ Yes ☐ No

Within the area overlying a subsurface mine. **(Does not apply to below grade tanks)**

- Written confirmation or verification or map from the NM EMNRD-Mining and Mineral Division

☐ Yes ☐ No

Within an unstable area. **(Does not apply to below grade tanks)**

- Engineering measures incorporated into the design; NM Bureau of Geology & Mineral Resources; USGS; NM Geological Society; Topographic map

☐ Yes ☐ No

Within a 100-year floodplain. **(Does not apply to below grade tanks)**

- FEMA map

☐ Yes ☐ No

**Below Grade Tanks**

Within 100 feet of a continuously flowing watercourse, significant watercourse, lake bed, sinkhole, wetland or playa lake (measured from the ordinary high-water mark).

- Topographic map; Visual inspection (certification) of the proposed site

☐ Yes ☒ No

Within 200 horizontal feet of a spring or a fresh water well used for public or livestock consumption;

- NM Office of the State Engineer - iWATERS database search; Visual inspection (certification) of the proposed site

☐ Yes ☒ No

**Temporary Pit using Low Chloride Drilling Fluid** (maximum chloride content 15,000 mg/liter)

Within 100 feet of a continuously flowing watercourse, or any other significant watercourse or within 200 feet of any lakebed, sinkhole, or playa lake (measured from the ordinary high-water mark). (Applies to low chloride temporary pits.)

- Topographic map; Visual inspection (certification) of the proposed site

☐ Yes ☐ No

Within 300 feet from a occupied permanent residence, school, hospital, institution, or church in existence at the time of initial application.

- Visual inspection (certification) of the proposed site; Aerial photo; Satellite image

☐ Yes ☐ No

Within 200 horizontal feet of a spring or a private, domestic fresh water well used by less than five households for domestic or stock watering purposes, or 300feet of any other fresh water well or spring, in existence at the time of the initial application.

NM Office of the State Engineer - iWATERS database search; Visual inspection (certification) of the proposed site

☐ Yes ☐ No

Within 100 feet of a wetland.

- US Fish and Wildlife Wetland Identification map; Topographic map; Visual inspection (certification) of the proposed site

☐ Yes ☒ No

### **Temporary Pit Non-low chloride drilling fluid**

Within 300 feet of a continuously flowing watercourse, or any other significant watercourse, or within 200 feet of any lakebed, sinkhole, or playa lake (measured from the ordinary high-water mark).

- Topographic map; Visual inspection (certification) of the proposed site

☐ Yes ☐ No

Within 300 feet from a permanent residence, school, hospital, institution, or church in existence at the time of initial application.

- Visual inspection (certification) of the proposed site; Aerial photo; Satellite image

☐ Yes ☐ No

Within 500 horizontal feet of a spring or a private, domestic fresh water well used by less than five households for domestic or stock watering purposes, or 1000 feet of any other fresh water well or spring, in the existence at the time of the initial application;

- NM Office of the State Engineer - iWATERS database search; Visual inspection (certification) of the proposed site

☐ Yes ☐ No

Within 300 feet of a wetland.

- US Fish and Wildlife Wetland Identification map; Topographic map; Visual inspection (certification) of the proposed site

☐ Yes ☐ No

### **Permanent Pit or Multi-Well Fluid Management Pit**

Within 300 feet of a continuously flowing watercourse, or 200 feet of any other significant watercourse, or lakebed, sinkhole, or playa lake (measured from the ordinary high-water mark).

- Topographic map; Visual inspection (certification) of the proposed site

☐ Yes ☐ No

Within 1000 feet from a permanent residence, school, hospital, institution, or church in existence at the time of initial application.

- Visual inspection (certification) of the proposed site; Aerial photo; Satellite image

☐ Yes ☐ No

Within 500 horizontal feet of a spring or a fresh water well used for domestic or stock watering purposes, in existence at the time of initial application.

- NM Office of the State Engineer - iWATERS database search; Visual inspection (certification) of the proposed site

☐ Yes ☐ No

Within 500 feet of a wetland.

- US Fish and Wildlife Wetland Identification map; Topographic map; Visual inspection (certification) of the proposed site

☐ Yes ☐ No

10.

### **Temporary Pits, Emergency Pits, and Below-grade Tanks Permit Application Attachment Checklist:** Subsection B of 19.15.17.9 NMAC

**Instructions:** Each of the following items must be attached to the application. Please indicate, by a check mark in the box, that the documents are attached.

- ☐ Hydrogeologic Report (Below-grade Tanks) - based upon the requirements of Paragraph (4) of Subsection B of 19.15.17.9 NMAC
- ☐ Hydrogeologic Data (Temporary and Emergency Pits) - based upon the requirements of Paragraph (2) of Subsection B of 19.15.17.9 NMAC
- ☐ Siting Criteria Compliance Demonstrations - based upon the appropriate requirements of 19.15.17.10 NMAC
- ☐ Design Plan - based upon the appropriate requirements of 19.15.17.11 NMAC
- ☐ Operating and Maintenance Plan - based upon the appropriate requirements of 19.15.17.12 NMAC
- ☒ Closure Plan (Please complete Boxes 14 through 18, if applicable) - based upon the appropriate requirements of Subsection C of 19.15.17.9 NMAC and 19.15.17.13 NMAC

☐ Previously Approved Design (attach copy of design) API Number: \_\_\_\_\_ or Permit Number: \_\_\_\_\_

11.

### **Multi-Well Fluid Management Pit Checklist:** Subsection B of 19.15.17.9 NMAC

**Instructions:** Each of the following items must be attached to the application. Please indicate, by a check mark in the box, that the documents are attached.

- ☐ Design Plan - based upon the appropriate requirements of 19.15.17.11 NMAC
- ☐ Operating and Maintenance Plan - based upon the appropriate requirements of 19.15.17.12 NMAC
- ☐ A List of wells with approved application for permit to drill associated with the pit.
- ☐ Closure Plan (Please complete Boxes 14 through 18, if applicable) - based upon the appropriate requirements of Subsection C of 19.15.17.9 NMAC and 19.15.17.13 NMAC
- ☐ Hydrogeologic Data - based upon the requirements of Paragraph (4) of Subsection B of 19.15.17.9 NMAC
- ☐ Siting Criteria Compliance Demonstrations - based upon the appropriate requirements of 19.15.17.10 NMAC

☐ Previously Approved Design (attach copy of design) API Number: \_\_\_\_\_ or Permit Number: \_\_\_\_\_

12.

**Permanent Pits Permit Application Checklist:** Subsection B of 19.15.17.9 NMAC

**Instructions:** Each of the following items must be attached to the application. Please indicate, by a check mark in the box, that the documents are attached.

- ☐ Hydrogeologic Report - based upon the requirements of Paragraph (1) of Subsection B of 19.15.17.9 NMAC  
☐ Siting Criteria Compliance Demonstrations - based upon the appropriate requirements of 19.15.17.10 NMAC  
☐ Climatological Factors Assessment  
☐ Certified Engineering Design Plans - based upon the appropriate requirements of 19.15.17.11 NMAC  
☐ Dike Protection and Structural Integrity Design - based upon the appropriate requirements of 19.15.17.11 NMAC  
☐ Leak Detection Design - based upon the appropriate requirements of 19.15.17.11 NMAC  
☐ Liner Specifications and Compatibility Assessment - based upon the appropriate requirements of 19.15.17.11 NMAC  
☐ Quality Control/Quality Assurance Construction and Installation Plan  
☐ Operating and Maintenance Plan - based upon the appropriate requirements of 19.15.17.12 NMAC  
☐ Freeboard and Overtopping Prevention Plan - based upon the appropriate requirements of 19.15.17.11 NMAC  
☐ Nuisance or Hazardous Odors, including H<sub>2</sub>S, Prevention Plan  
☐ Emergency Response Plan  
☐ Oil Field Waste Stream Characterization  
☐ Monitoring and Inspection Plan  
☐ Erosion Control Plan  
☐ Closure Plan - based upon the appropriate requirements of Subsection C of 19.15.17.9 NMAC and 19.15.17.13 NMAC

13.

**Proposed Closure:** 19.15.17.13 NMAC

**Instructions:** Please complete the applicable boxes, Boxes 14 through 18, in regards to the proposed closure plan.

- Type: ☐ Drilling ☐ Workover ☐ Emergency ☐ Cavitation ☐ P&A ☐ Permanent Pit ☒ Below-grade Tank ☐ Multi-well Fluid Management Pit  
☐ Alternative
- Proposed Closure Method: ☒ Waste Excavation and Removal  
☐ Waste Removal (Closed-loop systems only)  
☐ On-site Closure Method (Only for temporary pits and closed-loop systems)  
☐ In-place Burial ☐ On-site Trench Burial  
☐ Alternative Closure Method

14.

**Waste Excavation and Removal Closure Plan Checklist:** (19.15.17.13 NMAC) **Instructions:** Each of the following items must be attached to the closure plan. Please indicate, by a check mark in the box, that the documents are attached.

- ☒ Protocols and Procedures - based upon the appropriate requirements of 19.15.17.13 NMAC  
☒ Confirmation Sampling Plan (if applicable) - based upon the appropriate requirements of Subsection C of 19.15.17.13 NMAC  
☒ Disposal Facility Name and Permit Number (for liquids, drilling fluids and drill cuttings)  
☒ Soil Backfill and Cover Design Specifications - based upon the appropriate requirements of Subsection H of 19.15.17.13 NMAC  
☒ Re-vegetation Plan - based upon the appropriate requirements of Subsection H of 19.15.17.13 NMAC  
☒ Site Reclamation Plan - based upon the appropriate requirements of Subsection H of 19.15.17.13 NMAC

15.

**Siting Criteria (regarding on-site closure methods only):** 19.15.17.10 NMAC

**Instructions:** Each siting criteria requires a demonstration of compliance in the closure plan. Recommendations of acceptable source material are provided below. Requests regarding changes to certain siting criteria require justifications and/or demonstrations of equivalency. Please refer to 19.15.17.10 NMAC for guidance.

Ground water is less than 25 feet below the bottom of the buried waste. - NM Office of the State Engineer - iWATERS database search; USGS; Data obtained from nearby wells	<input type="checkbox"/> Yes <input type="checkbox"/> No <input type="checkbox"/> NA
Ground water is between 25-50 feet below the bottom of the buried waste - NM Office of the State Engineer - iWATERS database search; USGS; Data obtained from nearby wells	<input type="checkbox"/> Yes <input type="checkbox"/> No <input type="checkbox"/> NA
Ground water is more than 100 feet below the bottom of the buried waste. - NM Office of the State Engineer - iWATERS database search; USGS; Data obtained from nearby wells	<input type="checkbox"/> Yes <input type="checkbox"/> No <input type="checkbox"/> NA
Within 100 feet of a continuously flowing watercourse, or 200 feet of any other significant watercourse, lakebed, sinkhole, or playa lake (measured from the ordinary high-water mark). - Topographic map; Visual inspection (certification) of the proposed site	<input type="checkbox"/> Yes <input type="checkbox"/> No
Within 300 feet from a permanent residence, school, hospital, institution, or church in existence at the time of initial application. - Visual inspection (certification) of the proposed site; Aerial photo; Satellite image	<input type="checkbox"/> Yes <input type="checkbox"/> No
Within 300 horizontal feet of a private, domestic fresh water well or spring used for domestic or stock watering purposes, in existence at the time of initial application. - NM Office of the State Engineer - iWATERS database; Visual inspection (certification) of the proposed site	<input type="checkbox"/> Yes <input type="checkbox"/> No
Written confirmation or verification from the municipality; Written approval obtained from the municipality	<input type="checkbox"/> Yes <input type="checkbox"/> No
Within 300 feet of a wetland. US Fish and Wildlife Wetland Identification map; Topographic map; Visual inspection (certification) of the proposed site	<input type="checkbox"/> Yes <input type="checkbox"/> No
Within incorporated municipal boundaries or within a defined municipal fresh water well field covered under a municipal ordinance	<input type="checkbox"/> Yes <input type="checkbox"/> No

adopted pursuant to NMSA 1978, Section 3-27-3, as amended.

- Written confirmation or verification from the municipality; Written approval obtained from the municipality

☐ Yes ☐ No

Within the area overlying a subsurface mine.

- Written confirmation or verification or map from the NM EMNRD-Mining and Mineral Division

☐ Yes ☐ No

Within an unstable area.

- Engineering measures incorporated into the design; NM Bureau of Geology & Mineral Resources; USGS; NM Geological Society; Topographic map

☐ Yes ☐ No

Within a 100-year floodplain.

- FEMA map

☐ Yes ☐ No

16.

**On-Site Closure Plan Checklist:** (19.15.17.13 NMAC) *Instructions: Each of the following items must be attached to the closure plan. Please indicate, by a check mark in the box, that the documents are attached.*

- ☐ Siting Criteria Compliance Demonstrations - based upon the appropriate requirements of 19.15.17.10 NMAC  
☐ Proof of Surface Owner Notice - based upon the appropriate requirements of Subsection E of 19.15.17.13 NMAC  
☐ Construction/Design Plan of Burial Trench (if applicable) based upon the appropriate requirements of Subsection K of 19.15.17.11 NMAC  
☐ Construction/Design Plan of Temporary Pit (for in-place burial of a drying pad) - based upon the appropriate requirements of 19.15.17.11 NMAC  
☐ Protocols and Procedures - based upon the appropriate requirements of 19.15.17.13 NMAC  
☐ Confirmation Sampling Plan (if applicable) - based upon the appropriate requirements of 19.15.17.13 NMAC  
☐ Waste Material Sampling Plan - based upon the appropriate requirements of 19.15.17.13 NMAC  
☐ Disposal Facility Name and Permit Number (for liquids, drilling fluids and drill cuttings or in case on-site closure standards cannot be achieved)  
☐ Soil Cover Design - based upon the appropriate requirements of Subsection H of 19.15.17.13 NMAC  
☐ Re-vegetation Plan - based upon the appropriate requirements of Subsection H of 19.15.17.13 NMAC  
☐ Site Reclamation Plan - based upon the appropriate requirements of Subsection H of 19.15.17.13 NMAC

17.

**Operator Application Certification:**

I hereby certify that the information submitted with this application is true, accurate and complete to the best of my knowledge and belief.

Name (Print): LEE GARDNER

Title: SR USE SPECIALIST

Signature: [Signature]

Date: 4-14-14

e-mail address: WGARDNER@ENERVEST.NET

Telephone: 505-325-0318

18.

**OCD Approval:** ☐ Permit Application (including closure plan) ☒ Closure Plan (only) ☐ OCD Conditions (see attachment)

OCD Representative Signature: [Signature]

Approval Date: 5/5/2014

Title: Compliance Officer

OCD Permit Number: \_\_\_\_\_

19.

**Closure Report (required within 60 days of closure completion):** 19.15.17.13 NMAC

*Instructions: Operators are required to obtain an approved closure plan prior to implementing any closure activities and submitting the closure report. The closure report is required to be submitted to the division within 60 days of the completion of the closure activities. Please do not complete this section of the form until an approved closure plan has been obtained and the closure activities have been completed.*

☐ Closure Completion Date: \_\_\_\_\_

20.

**Closure Method:**

- ☐ Waste Excavation and Removal ☐ On-Site Closure Method ☐ Alternative Closure Method ☐ Waste Removal (Closed-loop systems only)  
☐ If different from approved plan, please explain.

21.

**Closure Report Attachment Checklist:** *Instructions: Each of the following items must be attached to the closure report. Please indicate, by a check mark in the box, that the documents are attached.*

- ☐ Proof of Closure Notice (surface owner and division)  
☐ Proof of Deed Notice (required for on-site closure for private land only)  
☐ Plot Plan (for on-site closures and temporary pits)  
☐ Confirmation Sampling Analytical Results (if applicable)  
☐ Waste Material Sampling Analytical Results (required for on-site closure)  
☐ Disposal Facility Name and Permit Number  
☐ Soil Backfilling and Cover Installation  
☐ Re-vegetation Application Rates and Seeding Technique  
☐ Site Reclamation (Photo Documentation)

On-site Closure Location: Latitude \_\_\_\_\_ Longitude \_\_\_\_\_ NAD: ☐ 1927 ☐ 1983

**Operator Closure Certification:**

I hereby certify that the information and attachments submitted with this closure report is true, accurate and complete to the best of my knowledge and belief. I also certify that the closure complies with all applicable closure requirements and conditions specified in the approved closure plan.

Name (Print): \_\_\_\_\_ Title: \_\_\_\_\_

Signature: \_\_\_\_\_ Date: \_\_\_\_\_

e-mail address: \_\_\_\_\_ Telephone: \_\_\_\_\_

**Enervest Operating LLC**  
**Jicarilla Apache Nation, San Juan Basin**

**Jicarilla Gas Com C #001E- Blow Pit**  
**Below Grade Tank**  
**Well API: 30-039-22089**  
**TWP: 26 N - Range: 5 W - Sec. 32;**  
**Lat: 36.44633, Long: -107.38603**

**Siting Criteria Compliance**

- Ground water is not less than 50 feet below the bottom the subject location
- The subject location is not within 300 feet of a continuously flowing watercourse.
- The subject location is not within 200 feet of any significant watercourse, lakebed, sinkhole or playa lake
- The subject location is not within 300 feet of a known permanent residence, school, hospital, institution or church
- The subject location is not within 500 feet of any known private domestic fresh water well or 1000 feet of any other fresh water well spring
- The subject location is not within any known incorporated municipal boundary
- The subject location is not within 500 feet of a known wetland
- The subject location is not within a known unstable area
- The subject location is not within a known 100 year flood plain
- The subject location is not over any known subsurface or surface mine

**Regional Geologic Setting**

Enervest Operating's Jicarilla Gas Com C-1E Blow Pit is located in the eastern-central portion of the San Juan Basin, within the Jicarilla Apache Indian Nation, the San Jose Formation outcrops and forms the surface landscape.

The San Jose Formation outcrops in the eastern-northeastern portion and covers ~1/6<sup>th</sup> of the San Juan Structural Basin. The San Jose Formation overlies the Nacimiento Formation in the area generally south of the CO-NM state line, and overlies the Animas Formation in the area generally north of the CO-NM state line (Fassett, 1974, p. 229). The basal contact of the San Jose varies with location in the basin. This contact is a disconformity along the basin margins, and it is an angular unconformity along the Nacimiento Uplift; the contact is conformable in the central basin (Baltz, 1967, p. 54; Fassett, 1974 p. 229).

The Eocene-aged San Jose Formation was deposited in various fluvial-type environments (Baltz, 1967, p 44-45) and consists of interbedded sequence of sandstone, siltstone and shale. The sandstone are buff to yellow and rusty-colored, crossbedded, very fine to coarse-grained arkose, which are locally conglomeratic and contain abundant silicified wood (Baltz, 1967, p. 46; Fassett, 1974, p 229; Anerholm, 1979, p. 23).

Thickness of the San Jose Formation generally increases from west to east. Fassett (1974, p 229) reported a maximum thickness of 2,400 feet in the east-central part of the basin, and Stone and others (1983, p. 25) reported a range of from about 200 feet in the west and south to almost 2,700 feet in the center of the structural basin.

#### **Ground Water Data, Water Well Locations**

**Hydraulic Properties:** Levings and Others (1990) reported well yields from 79 water wells completed in the San Jose, Nacimiento and Animas Formations ranged from 1 to 61 gallons per minute and median is 6 gallons per minute. Transmissivity data for the San Jose, Nacimiento and Animas Formations are minimal. Values of 40 and 120 feet squared per day were determined from two aquifer tests (Stone and Others, 1983, table 5). The San Jose, Nacimiento and Animas Formations are a source of water for public supply, commercial, private-domestic and livestock use in areas where drilling depths and pumping levels are economically feasible and where water quality is suitable.

The San Jose, Nacimiento and Animas Formations are all hydrologically similar because sands in all units produce approximately the same quantities of water. The great percentage of fine material in all may restrict the downward vertical leakage to the Ojo Alamo Sandstone or Kirtland Shale. The poorly cemented material is highly erodible, forms a badland terrain and supports only spotty vegetation. These conditions are more conducive to runoff than retention of precipitation.

**iWaters Database:** The search showed no reported wells with groundwater information in the **T26N-R5W**. Attached are the results for the three query engines: 1) POD/Surface Data Report, 2) Avg Depth to Water Report, 3) Water Column Report

- Ground water is not less than 50 feet below the bottom the subject location
- No known private water wells are within 500 feet of the subject location
- No known public water wells are within 1000 feet of the subject location
- No water wells around the subject area are listed in the iWaters Database

#### **Wetland Maps and Data**

The US Fish and Wildlife for the **Jicarilla Gas Com C #1E** is unavailable due to its location being within the Jicarilla Apache Indian Nation. The US Fish and Wildlife does not have wetland information for the Jicarilla Apache Indian Nation. This well is not located near a wash or watercourse and is not in a wetland area as visible on the topographic map.

#### **Flood Zone Maps and Data**

The FEMA Map for the **Jicarilla Gas Com C #1E** is unavailable due to its location being within the Jicarilla Apache Indian Nation. FEMA does not provide floodplain information for the Jicarilla Apache Indian Nation. This well is not located near a wash or watercourse and is not in a 100 year floodplain as visible on the topographic map.



## **References**

Baltz, E.H., 1967, Stratigraphy and Regional Tectonic Implications of part of Upper Cretaceous Rocks, east-central San Juan Basin, New Mexico: USGS Professional Paper 552, 101p

Brimhall, R.M., 1973, Ground-water hydrology of Tertiary Rocks of the San Juan Basin, New Mexico, in Fassett, J.E., ed., Cretaceous and Tertiary Rocks of the Southern Colorado Plateau: Four Corners Geological Society Memoir, p. 197-207

Fassett, J.E., 1974, Cretaceous and Tertiary rocks of the eastern San Juan Basin, New Mexico and Colorado, in Guidebook of Ghost Ranch, central-northern New Mexico: New Mexico Geological Society, 25<sup>th</sup> Field Conference, p. 225-230.

Fassett, J.E., and Hinds, J.S., 1971, Geology and fuel resources of the Fruitland Formation and Kirtland Shale of the San Juan Basin, New Mexico and Colorado: USGS Professional Paper 676, 76p.

Levings, G.W., Craig, S.D., Dam, W.L., Kernodle, J.M., and Thorn, C.R., 1990, Hydrogeology of the San Jose, Nacimiento, Animas Formations in the San Juan structural basin, New Mexico, Colorado, Arizona, and Utah: USGS Hydrologic Investigations Atlas HA-720-A, 2 sheets.

Stone, W.J., Lyford, F.P., Frenzel, P.F., Mizell, N.H., and Padgett, E.T., 1983, Hydrogeology and water resource of San Juan Basin, New Mexico: New Mexico Bureau of Mines and Mineral Resources, Hydrologic Report 6

Wells, S.G., Lambert, W., and Callender, J., 1981, Environmental Geology and Hydrology in New Mexico: New Mexico Geological Society Special Publication #10, 152p.

New Mexico Office of the State Engineer-iWATERS Database  
[http://www.ose.state.nm.us/water\\_db\\_index.html](http://www.ose.state.nm.us/water_db_index.html)

New Mexico EMNRD Mining and Mineral Division  
<http://www.emnrd.state.nm.us/MMD/coalminewebmap/coalminewebmap.html>  
<http://www.enrd.state.nm.us/MMD/MRRS/MinesMillsQuarriesWebMap.htm>

State Bureau of Mines and Minerals Resources  
<http://geoinfo.nmt.edu/index.html>

US Fish and Wildlife  
<http://www.fws.gov.html>

New Mexico Land Office  
<http://store.usgs.gov/mod/index.html>

<http://terraserver-usa.com>

US Geological Survey (USGS)

<http://store.usgs.gov/mod/index.html>

<http://terraserver-usa.com/>

Federal Emergency Management Agency (FEMA)

<http://www.fema.gov/>

<http://msc.fema.gov/webapp/wcs/stores/servlet/FemaWelcomeView?storeId=10001&catalogId=10001&langId=-1>

Google Earth

<http://landstatus.nmstatelands.org/>

<http://www.earthpoint.us/townships.html>

New Mexico Geological Society

<http://nmgs.nmt.edu/>



# *New Mexico Office of the State Engineer* **Water Column/Average Depth to Water**

---

No records found.

**Basin/County Search:**

**Basin:** San Juan

**County:** Rio Arriba

**PLSS Search:**

**Section(s):** 32

**Township:** 26N

**Range:** 05W

# Enervest Gas Com 1E Blow Pit

Write a description for your map.

Legend

Feature 1

n36.44633 w107.33603 Enervest Gas Com 1E Blow Pit

Google earth

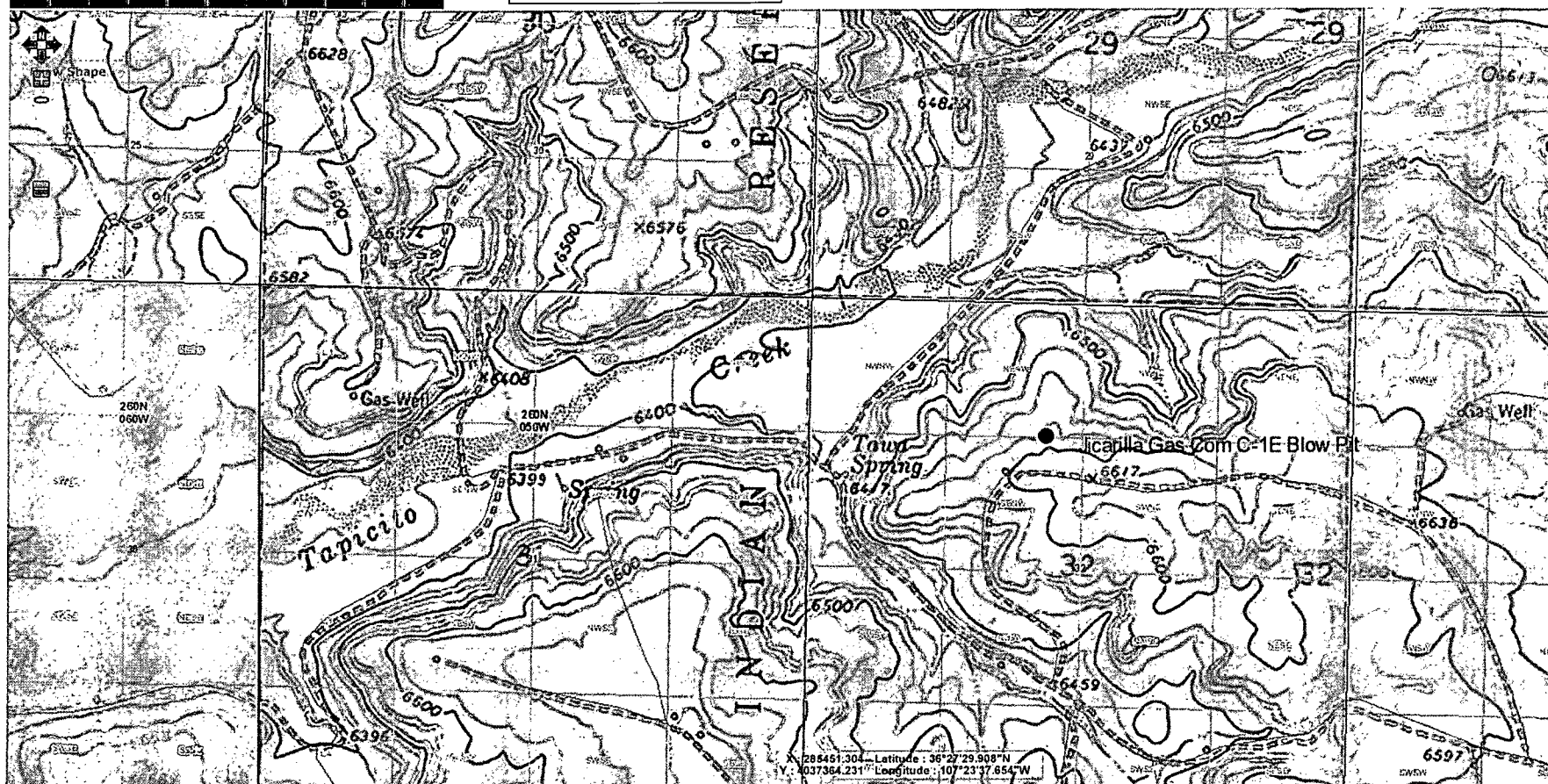
© 2014 Google

2000 ft



[HOME](#)**NEW MEXICO  
STATE LAND OFFICE**

Land Office Geographic Information Center - General Land Status

☐ Map ☐ Relief ☐ Imagery ☒ Topo**NEW MEXICO  
STATE LAND OFFICE**[HOME](#) [AFFILIATED WEBSITES](#) [EMPLOYEE ACCESS](#) [JOB OPENINGS](#) [NEW MEXICO SUNSHINE PORTAL](#)  
[EMPLOYEE LOOKUP](#) [GET EMAIL UPDATES](#)310 Old Santa Fe Trail, Santa Fe NM 87501  
P.O. Box 1148, Santa Fe, NM 87504  
505-827-5780  
505-827-5766 (Fax)

**EnerVest Operating, LLC (EV)**

**BELOW-GRADE TANK  
CLOSURE PLAN**

**Rule 19.15.17.13**

**Well Name – Jicarilla Gas Com C-1E Blow Pit**

**API # 30-039-22089**

**Location UL- F, Sec 32, T-26N, R-5W**

**Lat: N 36.44633 Lat W -107. 38603**

Before June 15, 2013, EV shall close, retrofit, or replace an existing below-grade tank that has not demonstrated integrity.

EV shall close a below-grade tank within the time periods provided in 19.15.17.13 NMAC, or by an earlier date that the division requires because of imminent danger to fresh water, public health or the environment.

- A. EV shall close an existing below-grade tank that does not meet the requirements of Subsection I, paragraphs (1) through (4), of 19.15.17.11 NMAC if not retrofitted to comply with said requirements prior to any sale or change of operator to 19.15.9.9 NMAC.

Any below-grade tank installed prior to June 16, 2008 that is single walled and where any portion of the tank sidewall is below the ground surface and not visible shall equip or retrofit the below-grade tank to comply with paragraphs (1) through (4) of Subsection I of 19.15.17.11 NMAC, or close it, within 5 years after June 16, 2008.

Within 60 days of cessation of the permitted below-grade tanks operation or as required by Subsection B of 19.15.17.17 NMAC, EV shall close the below-grade tank in accordance with a closure plan that the appropriate division district office approves.

- B. Prior to implementing any closure operations EV shall research county tax records to determine the name and address of the surface owner of the properties involved. EV shall notify this surface owner via Certified U.S. Mail, return receipt requested, of their intent to close said below-grade tank.

Upon determination, EV will notify the appropriate district office verbally and in writing at least 72 hours but not more than one week prior to beginning work. Such notice shall contain at a minimum the following:

Operators Name  
Unit letter, Section, Township, & Range of well  
Well name and well number  
API Number of well



- C. Within 60 days of completion of closure operations, EV will file Form C-144, with attachments, outlining the detailed operations of the closing operations. Such attachments shall include, but not limited to, proof of surface owner and division notifications, confirmation of sampling analysis, disposal facility names and permit numbers, soil backfilling and cover installation, re-vegetation application rates and seeding techniques, and photo documentations.
- D. All free standing liquids and sludge will be removed at the start of the below-grade tank closure process from the below-grade tank and disposed of in one of the below division-approved facility as indicated below:
- |                       |                     |                  |
|-----------------------|---------------------|------------------|
| TNT Land Farm         | Permit # NM-01-0008 | Liquids & Sludge |
| Environtech Land Farm | Permit # NM-01-0011 | Solids           |
| AguaMoss              | Permit # 247130     | Liquids          |

EV will obtain prior approval from the division to dispose, recycle, reuse, or reclaim the below-grade tanks and provide documentation of the final disposition of the below-grade tank in the closure report.

Existing liners that are removed as a result of closure will be wiped cleaned and disposed of at a solid waste facility listed below in compliance with Subparagraph (M) of Paragraph (I) of Subsection C 19.15.35.8 NMAC..

San Juan Regional Landfill	Permit # SWM 052426 or
“	Special Waster Permit # SWM052433 “sp”

If there is any on-site equipment associated with a below grade tank, EV shall remove the equipment, unless the equipment is required for some other purpose .

Upon removal of the below-grade tank, EV will take, at a minimum, a five point composite sample from where the tank was sitting. EV shall collect individual grab samples will be taken from any area that is wet, discolored or showing other evidence of a release. All samples will be analyzed for the following:

Constituent	Method	Groundwater 51-100FT	Test Results
Chloride	EPA 300.0	10,000 mg/kg	Pending
TPH	EPA SW-846 Method 418.1	2,500 mg/kg	Pending
BTEX	EPA SW-846 Method 8021B or 8260B	50 mg/kg	Pending
Benzene	EPA -SW-846 Method 8021B or 8015M	10 mg/kg	Pending
GRO/DRO	EPA SW-846 Method 8015B	1000 mg/kg	Pending

EV will insure that the results of all sampling shall be reported to the division on approved form C-141. EV understands that the division may require additional delineation upon review of the results.

If sampling demonstrates that concentrations specified above have NOT been exceeded, or that a release has NOT occurred, EV will backfill the excavation with compacted, non-waste containing, earthen material, construct a division prescribed soil cover, and recontour and re-vegetate the site. The division prescribed soil cover, recontouring, and re-vegetation shall comply with 19.15.17.13.

If EV or the division determines that a release has occurred, EV shall fully comply with 19.15.29 NMAC and 19.15.30 NMAC as appropriate.

- E. Once EV has closed a below-grade tank, we shall reclaim the site to a safe and stable condition that blends with the surrounding undisturbed area. When possible, EV will restore the impacted surface area to the condition that existed prior to oil and gas operations by the placement of soil cover.

If the closed area is within the confines of the pad location EV will blend the site to match the pad location as much as possible. Such activities shall prevent erosion, protect fresh water, human health and the environment. EV will obtain written agreement from the surface owner for any alternate re-vegetation proposals and submit to the division for final approval.

The soil cover design will be consistent with the requirements of 19.15.17.13(H)(1) and (3). The soil cover will consist of the background thickness of topsoil or one foot of suitable material to establish vegetation at the site, whichever is greater. The soil cover will be constructed to the site's existing grade and prevent ponding of water and erosion of the cover material.

EV will seed the disturbed areas the first growing season after closing the below grade tank. Seeding will be accomplished via drilling on the contour whenever practical or by other division-approved methods. BLM or Forest Service stipulated seed mixes will be used on federal lands. Vegetative cover will equal 70% of the native perennial vegetative cover (un-impacted) consisting of at least three native plant species, including at least one grass, but not including noxious weeds, and maintain that cover through two successive growing seasons. Repeat seeding or planting will be continued until successful vegetative growth occurs. During the two growing seasons that prove viability, there shall be no artificial irrigation of the vegetation.

EV shall notify the division when it has seeded or planted and when it successfully achieves re-vegetation.