

Submit 3 Copies To Appropriate District  
Office  
District I  
1625 N. French Dr., Hobbs, NM 87240  
District II  
1301 W. Grand Ave., Artesia, NM 88210  
District III  
1000 Rio Brazos Rd., Aztec, NM 87410  
District IV  
1220 S. St. Francis Dr., Santa Fe, NM  
87505

State of New Mexico  
Energy, Minerals and Natural Resources

Form C-103

June 19, 2008

OIL CONSERVATION DIVISION  
1220 South St. Francis Dr.  
Santa Fe, NM 87505

WELL API NO. <b>30-045-07914</b>
5. Indicate Type of Lease STATE <input type="checkbox"/> FEE <input checked="" type="checkbox"/>
6. State Oil & Gas Lease No.
7. Lease Name or Unit Agreement Name: <b>SULLIVAN A</b>
8. Well Number <b>#1</b>
9. OGRID Number <b>5380</b>
10. Pool name or Wildcat <b>BASIN DAKOTA</b>

**SUNDRY NOTICES AND REPORTS ON WELLS**  
(DO NOT USE THIS FORM FOR PROPOSALS TO DRILL OR TO DEEPEN OR PLUG BACK TO A DIFFERENT RESERVOIR. USE "APPLICATION FOR PERMIT" (FORM C-101) FOR SUCH PROPOSALS.)

1. Type of Well: Oil Well <input type="checkbox"/> Gas Well <input checked="" type="checkbox"/> Other	7. Lease Name or Unit Agreement Name: <b>SULLIVAN A</b>
2. Name of Operator <b>XTO Energy Inc.</b>	8. Well Number <b>#1</b>
3. Address of Operator <b>382 CR 3100 Aztec, NM 87410</b>	9. OGRID Number <b>5380</b>
4. Well Location Unit Letter <b>C</b> : <b>790'</b> feet from the <b>NORTH</b> line and <b>1850'</b> feet from the <b>WEST</b> line Section <b>25</b> Township <b>29N</b> Range <b>11W</b> NMPM County <b>SAN JUAN</b>	10. Pool name or Wildcat <b>BASIN DAKOTA</b>
11. Elevation (Show whether DR, RKB, RT, GR, etc.) <b>5467' GR</b>	

12. Check Appropriate Box to Indicate Nature of Notice, Report, or Other Data

NOTICE OF INTENTION TO:

PERFORM REMEDIAL WORK ☐ PLUG AND ABANDON ☐  
TEMPORARILY ABANDON ☐ CHANGE PLANS ☐  
PULL OR ALTER CASING ☐ MULTIPLE COMPL ☐  
DOWNHOLE COMMINGLE ☐

OTHER: ☐

SUBSEQUENT REPORT OF:

REMEDIAL WORK ☐ ALTERING CASING ☐  
COMMENCE DRILLING OPNS. ☐ P AND A ☒  
CASING/CEMENT JOB ☐ **OIL CONS. DIV DIST. 3**

**APR 29 2014**

OTHER: ☐

13. Describe proposed or completed operations. (Clearly state all pertinent details, and give pertinent dates, including estimated date of starting any proposed work). SEE RULE 1103. For Multiple Completions: Attach wellbore diagram of proposed completion or recompletion.

XTO Energy Inc. has found that according to the new BGM Survey C-102 plat that the footages for this well where previously incorrect. Please see attached C-102 Survey. XTO Energy Inc has plugged and abandoned and set the BGM on this well per the attached summary report. A Closed Loop System was used and all liquid was taken to IEI Inc. NM 01-0010B.

*Below grade marker*

*PNR ONLY*

Approved for plugging of wellbore only.  
Liability under bond is retained pending  
Receipt of C-103 (Subsequent Report of Well  
Plugging) which may be found @ OCD web  
page under forms  
[www.emnrd.state.us/oed](http://www.emnrd.state.us/oed)

Spud Date:

Rig Release Date:

I hereby certify that the information above is true and complete to the best of my knowledge and belief.

SIGNATURE *Kristen D. Babcock* TITLE REGULATORY ANALYST DATE 4/28/14  
kristen.babcock@xtoenergy.com

Type or print name KRISTEN D. BABCOCK E-mail address: PHONE 505-333-3206

For State Use Only

APPROVED BY *[Signature]* TITLE GEOLOGIST DISTRICT #3 DATE 5-9-14  
Conditions of Approval (if any): AV

District I  
1625 N. French Dr., Hobbs, NM 88240  
Phone: (575) 393-6161 Fax: (575) 393-0720  
District II  
811 S. First St., Artesia, NM 88210  
Phone: (575) 748-1283 Fax: (575) 748-9720  
District III  
1000 Rio Brazos Road, Aztec, NM 87410  
Phone: (505) 334-6178 Fax: (505) 334-6170  
District IV  
1220 S. St. Francis Dr., Santa Fe, NM 87505  
Phone: (505) 476-3460 Fax: (505) 476-3462

State of New Mexico  
Energy, Minerals & Natural Resources Department  
OIL CONSERVATION DIVISION  
1220 South St. Francis Dr.  
Santa Fe, NM 87505

Form C-102  
Revised August 1, 2011  
Submit one copy to appropriate  
District Office

☐ AMENDED REPORT

WELL LOCATION AND ACREAGE DEDICATION PLAT

<sup>1</sup> API Number 30-045-07914	<sup>2</sup> Pool Code	<sup>3</sup> Pool Name Basin Dakota
<sup>4</sup> Property Code	<sup>5</sup> Property Name SULLIVAN A	<sup>6</sup> Well Number 1
<sup>7</sup> OGRID No. 5380	<sup>8</sup> Operator Name XTO ENERGY INC.	<sup>9</sup> Elevation 5,472

<sup>10</sup> Surface Location

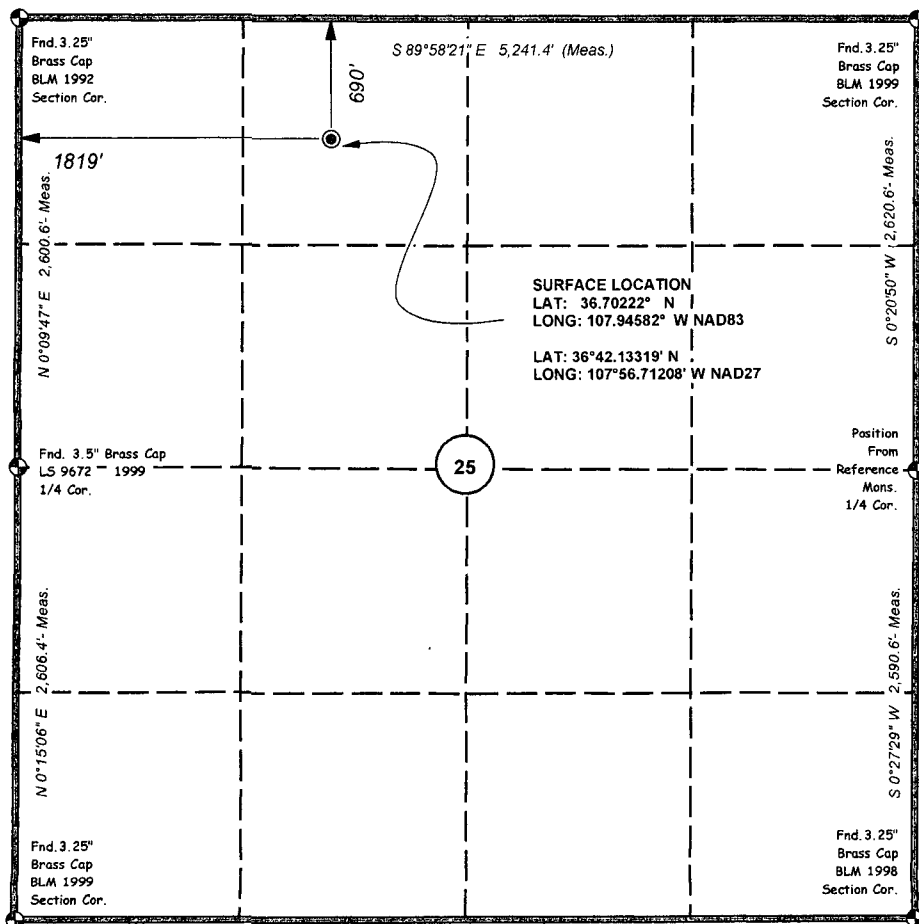
UL or lot no.	Section	Township	Range	Lot Idn	Feet from the	North/South line	Feet from the	East/West line	County
C	25	29 N	11W		690	NORTH	1819	WEST	SAN JUAN

<sup>11</sup> Bottom Hole Location If Different From Surface

UL or lot no.	Section	Township	Range	Lot Idn	Feet from the	North/South line	Feet from the	East/West line	County

<sup>12</sup> Dedicated Acres	<sup>13</sup> Joint or Infill	<sup>14</sup> Consolidation Code	<sup>15</sup> Order No.
-------------------------------	-------------------------------	----------------------------------	-------------------------

No allowable will be assigned to this completion until all interests have been consolidated or a non-standard unit has been approved by the division.



<sup>17</sup> OPERATOR CERTIFICATION

I hereby certify that the information contained herein is true and complete to the best of my knowledge and belief, and that this organization either owns a working interest or unleased mineral interest in the land including the proposed bottom hole location or has a right to drill this well at this location pursuant to a contract with an owner of such a mineral or working interest, or to a voluntary pooling agreement or a compulsory pooling order heretofore entered by the division.

*Kristen Babcock* 4-25-11  
Signature Date

Kristen Babcock  
Printed Name

Kristen-Babcock@xtoenergy.com  
E-mail Address

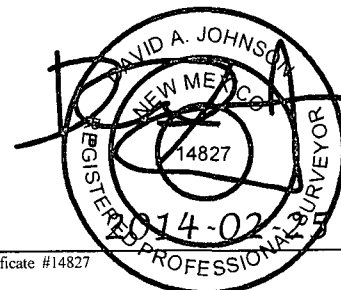
<sup>18</sup> SURVEYOR CERTIFICATION

I hereby certify that the well location shown on this plat was plotted from field notes of actual surveys made by me or under my supervision, and that the same is true and correct to the best of my belief.

FEB. 25, 2014

Date of Survey

Signature and Seal of Professional Surveyor:



Certificate #14827

# A-PLUS WELL SERVICE, INC.

P.O. BOX 1979  
Farmington, New Mexico 87499  
505-325-2627 \*fax: 505-325-1211

XTO Energy Inc.  
Sullivan A #1

April 21, 2014  
Page 1 of 2

790' FNL and 1850' FWL, Section 25, T-29-N, R-11-W  
San Juan County, NM  
Lease Number: FEE  
API #30-045-07914

## Plug and Abandonment Report Notified NMOCD and BLM on 4/14/14

### Plug and Abandonment Summary:

- Plug #1** with CR at 6083' spot 24 sxs (28.32 cf) Class B cement inside casing from 6083' to 5773' to cover the Dakota top.
- Plug #2** with CR at 5263' spot 57 sxs (67.26 cf) Class B cement inside casing from 5295' to 5071' to cover the Gallup top 1) mix and pump 57 sxs and displace to cement at EOT, 2) sting in CR and pump 42 sxs below CR (3 sxs inside and 39 sxs outside 4-1/2" casing), 3) sting out CR and leave 15 sxs above CR 5263' to 5071'.
- Plug #3** with CR at 4472' spot 57 sxs (67.26 cf) Class B cement inside casing from 4512' to 4291' to cover the Mancos top 1) pump and displace until 43 sxs below CR (4 sxs inside and 39 sxs outside 4-1/2" casing), 2) sting out and leave 15 sxs above CR 4472' to 4291'.
- Plug #4** with 16 sxs (18.88 cf) Class B cement inside casing from 3340' to 3133' to cover the Mesaverde top.
- Plug #5** with 16 sxs (18.88 cf) Class B cement inside casing from 2731' to 2524' to cover the Chacra top.
- Plug #6** with 16 sxs (18.88 cf) Class B cement inside casing from 1746' to 1539' to cover the Pictured Cliffs top.
- Plug #7** with CR at 1397' spot 54 sxs (63.72 cf) Class B cement inside casing from 1435' to 1242' to cover the Fruitland top 1) pump 42 sxs cement below CR (3 xs inside and 39 sxs outside 4-1/2" casing), 2) sting out CR and leave 12 sxs from 1397' to 1242'.
- Plug #8** with 66 sxs (77.88 cf) Class B cement from 720' to surface to cover the Kirtland, Ojo Alamo, 10-3/4" casing shoe and surface, 1) pump 58 sxs to circulate good cement out casing valve, 2) TOH and LD all tubing and plugging sub, RU pump to casing valve, 3) pump 8 sxs to re-fill 4-1/2" casing wash pipe on float, wash and RD workfloor, ND and hang back BOP.

### Plugging Work Details:

- 4/5/14 Rode rig and equipment to location. Spot in and RU. Check well pressures: SITP and SICP 300 PSI. Found BH open. RD wellhead tree and blow well down. Dig out BH no 2<sup>nd</sup> valve. Pump 25 bbl down tubing to kill well. ND wellhead. NU BOP and function test. PU on tubing string. LD hanger. SI well. SDFD.
- 4/6/14 Check well pressures: SITP 38 PSI, SICP 18 PSI and SIBHP 0 PSI. TOH and tally 195 jnts 2-3/8" 4.7# J-55 tubing, total 6168.88' and SN with MS. TIH with 4.5" string mill to 6083'. TOH and LD mill. TIH with 4.5" DHS CR and set at 6083'. Pressure test tubing to 1000 PSI, OK. Circulate well clean. Pressure test casing to 800 PSI, OK. Spot plug #1 with calculated TOC at 5773'. SI well. SDFD.

## **A-PLUS WELL SERVICE, INC.**

P.O. BOX 1979

Farmington, New Mexico 87499

505-325-2627 \*fax: 505-325-1211

XTO Energy Inc.  
**Sullivan A #1**

April 21, 2014  
Page 2 of 2

### **Plugging Work Details (continued):**

- 4/17/14 Open up well; no pressures. Pressure test casing to 800 PSI, OK. Perforate 3 HSC squeeze holes at 5295', attempt rate, bled from 800 PSI to 775 PSI in 5 minutes. TIH with 4.5" DHS CR and set at 5263'. Pressure test tubing to 1300 PSI. Pressure test casing above CR to 800 PSI, OK. Attempt to establish rate bled from 1300 PSI to 1200 PSI in 1 minute. Spot plug #2 with calculated TOC at 5071'. Pressure test casing to 800 PSI, OK. Perforate 3 HSC squeeze holes at 4512'. Attempt to establish rate, bled from 800 PSI to 500 PSI. TIH with 4.5" DHS CR and set at 4472'. Pressure test casing to 800 PSI. Sting into CR and break down perforations 2 bpm at 1000 PSI. Spot plug #3 with calculated TOC at 4291'. SI well. SDFD.
- 4/18/14 Open up well, no pressures. PU plugging sub and TIH with tubing to 3340'. Spot plugs #4, #5 and #6. Pressure test casing to 800 PSI, OK. Perforate 3 HSC squeeze holes at 1435'. Establish rate thru perms of 2 bpm at 500 PSI. TIH with 4.5" DHS CR and set at 1397'. Pressure test casing to 800 PSI, OK. Establish rate of 2 bpm at 750 PSI. Spot plug #7 with calculated TOC at 1242'. Perforate 3 HSC squeeze holes at 670' PSI. Attempt and unable to establish rate bled from 1100 PSI to 1050 PSI in 10 minutes. Bradenhead pressured up to 300 PSI with 1/8 bbl and held 300 PSI. Dig out bradenhead valve and remove water and paraffin in casing head. Re-install BH valve, pressure up on BH to 800 PSI and bled to 500 PSI in 2 minutes. Attempt to establish rate, bled to 1500 PSI and 1450 PSI in 5 minutes. Note: J. Durham, NMOCD requested a CBL. SI well. SDFD.
- 4/21/14 Open up well; no pressures. Ran CBL from 1150' to surface calculated TOC in annulus at 1000' to surface. Note: J. Durham, NMOCD approved to combine plugs. Spot plug #8 with TOC at surface. Dig out wellhead. RU High Desert. Write Hot Work Permit. Cut off wellhead. Cement at cut off. Install plate marker with coordinates N 36° 42' 08.2", W 107° 56' 45.0". RD and MOL.

John Durham, NMOCD representative, was on location.