

UNITED STATES
DEPARTMENT OF THE INTERIOR
BUREAU OF LAND MANAGEMENT

FORM APPROVED
OMB No. 1004-0137
Expires: July 31, 2010

SUNDRY NOTICES AND REPORTS ON WELLS
*Do not use this form for proposals to drill or to re-enter an
abandoned well. Use Form 3160-3 (APD) for such proposals.*

SUBMIT IN TRIPLICATE - Other instructions on page 2.

1. Type of Well <input type="checkbox"/> Oil Well <input checked="" type="checkbox"/> Gas Well <input type="checkbox"/> Other		5. Lease Serial No. SF-078198
2. Name of Operator Burlington Resources Oil & Gas Company LP		6. If Indian, Allottee or Tribe Name
3a. Address PO Box 4289, Farmington, NM 87499		7. If Unit of CA/Agreement, Name and/or No.
3b. Phone No. (include area code) (505) 326-9700		8. Well Name and No. Nye SRC 14
4. Location of Well (Footage, Sec., T., R., M., or Survey Description) Surface Unit J (NWSE), 1780' FSL & 1570' FEL, Sec. 13, T30N, R11W		9. API Well No. 30-045-11663
		10. Field and Pool or Exploratory Area Blanco MV / Basin DK
		11. Country or Parish, State San Juan New Mexico

12. CHECK THE APPROPRIATE BOX(ES) TO INDICATE NATURE OF NOTICE, REPORT OR OTHER DATA

TYPE OF SUBMISSION	TYPE OF ACTION			
<input checked="" type="checkbox"/> Notice of Intent	<input type="checkbox"/> Acidize	<input type="checkbox"/> Deepen	<input type="checkbox"/> Production (Start/Resume)	<input type="checkbox"/> Water Shut-Off
<input type="checkbox"/> Subsequent Report	<input type="checkbox"/> Alter Casing	<input type="checkbox"/> Fracture Treat	<input type="checkbox"/> Reclamation	<input type="checkbox"/> Well Integrity
<input type="checkbox"/> Final Abandonment Notice	<input type="checkbox"/> Casing Repair	<input type="checkbox"/> New Construction	<input type="checkbox"/> Recomplete	<input type="checkbox"/> Other
	<input type="checkbox"/> Change Plans	<input checked="" type="checkbox"/> Plug and Abandon	<input type="checkbox"/> Temporarily Abandon	
	<input type="checkbox"/> Convert to Injection	<input type="checkbox"/> Plug Back	<input type="checkbox"/> Water Disposal	

13. Describe Proposed or Completed Operation: Clearly state all pertinent details, including estimated starting date of any proposed work and approximate duration thereof. If the proposal is to deepen directionally or recompleat horizontally, give subsurface locations and measured and true vertical depths of all pertinent markers and zones. Attach the bond under which the work will be performed or provide the Bond No. on file with BLM/BIA. Required subsequent reports must be filed within 30 days following completion of the involved operations. If the operation results in a multiple completion or recompleat in a new interval, a Form 3160-4 must be filed once Testing has been completed. Final Abandonment Notices must be filed only after all requirements, including reclamation, have been completed and the operator has determined that the site is ready for final inspection.)

Attached is the current and proposed procedure and wellbore schematic to continue the P&A of the subject well. Please reference Trouble call dated 3/14/13 where we had gas coming from the well. We have been monitoring the well as requested and have received approval from BLM/OCD to proceed with the plugging operations.

OIL CONS. DIV DIST. 3

MAY 19 2014

14. I hereby certify that the foregoing is true and correct. Name (Printed/Typed) Arleen White		Title Staff Regulatory Technician
Signature <i>Arleen White</i>		Date 5/12/14

THIS SPACE FOR FEDERAL OR STATE OFFICE USE

Approved by Original Signed: Stephen Mason	Title MAY 13 2014
Conditions of approval, if any, are attached. Approval of this notice does not warrant or certify that the applicant holds legal or equitable title to those rights in the subject lease which would entitle the applicant to conduct operations thereon.	Date 5/13/14
Office	

Title 18 U.S.C. Section 1001 and Title 43 U.S.C. Section 1212, make it a crime for any person knowingly and willfully to make to any department or agency of the United States any false, fictitious or fraudulent statements or representations as to any matter within its jurisdiction.

ConocoPhillips
NYE SRC 14
Expense - P&A

Lat 36° 48' 32.393" N

Long 107° 56' 20.4" W

PROCEDURE

This project requires the use of an A-Plus steel tank to handle waste fluids circulated from the well and cement wash up.

1. Hold pre-job safety meeting. Comply with all NMOCD, BLM, and COPC safety and environmental regulations. Test rig anchors prior to moving in rig.
2. MIRU workover rig. Check casing, tubing, and bradenhead pressures and record them in Wellview. **If there is pressure on the BH, contact the Wells Engineer.**
3. Remove existing piping on casing valve. RU blow lines from casing valves and being blowing down casing pressure. Kill-well as necessary. Ensure well is dead or on a vacuum.
4. ND wellhead and NU BOPE. Pressure and function test BOP to 250 psi low and 1000 psi over SICP high to a maximum of 2000 psi held and charted for 10 minutes as per COP Well Control Manual. PU and remove tubing hanger
5. TOOH with tubing (per pertinent data sheet).

Tubing size: 2-3/8" 4.7#, J-55 EUE Set Depth: 1422' ftKB KB: 13 ft

All cement volumes use 100% excess outside pipe and 50' excess inside pipe. The stabilizing wellbore fluid will be 8.3 ppg, sufficient to balance all exposed formation pressures. All cement will be ASTM Class B mixed at 15.6 ppg with a 1.18 cf/sk yield.

6. Plug 9A (Ojo Alamo and Kirtland Formation Tops, 986'-1325', 163 Sacks Class B Cement)

Note: Open perfs at 1170'. RU wireline, RIH and perforate 3 squeeze holes @ 1325'. Establish injection rate into squeeze holes. RIH w/ CR for 4-1/2" casing and set @ 1122'. Mix 163 sx Class B cement and squeeze under the CR to cover the Ojo Alamo and Kirtland formation tops. Unsting from CR and put 12 sx Class B cement on top of the cement retainer. POOH.

7. Plug 10 (Surface, 0'-354', 126 Sacks Class B Cement)

RIH w/ wireline and perforate 4 big hole charge (if available) squeeze holes @ 354'. TOOH and RD wireline. Observe well for 30 minutes per BLM regulations. RU pump, close blind rams and establish circulation out bradenhead with water. Circulate BH clean. TIH with CR for 4-1/2" casing and set @ 304'. Mix 95 sx Class B cement and squeeze until good cement returns to surface out BH valve. Shut BH valve and squeeze to max 200 psi. Sting out of CR and reverse circulate cement out of tubing. TOOH and LD stinger. TIH with open ended tubing to 304'. Mix 31 sx Class B cement and pump inside plug. TOOH and LD Tubing. SI well and WOC.

8. Nipple down BOP and cut off casing below the casing flange. Install P&A marker with cement to comply with regulations. Rig down, move off location, cut off anchors, and restore location.

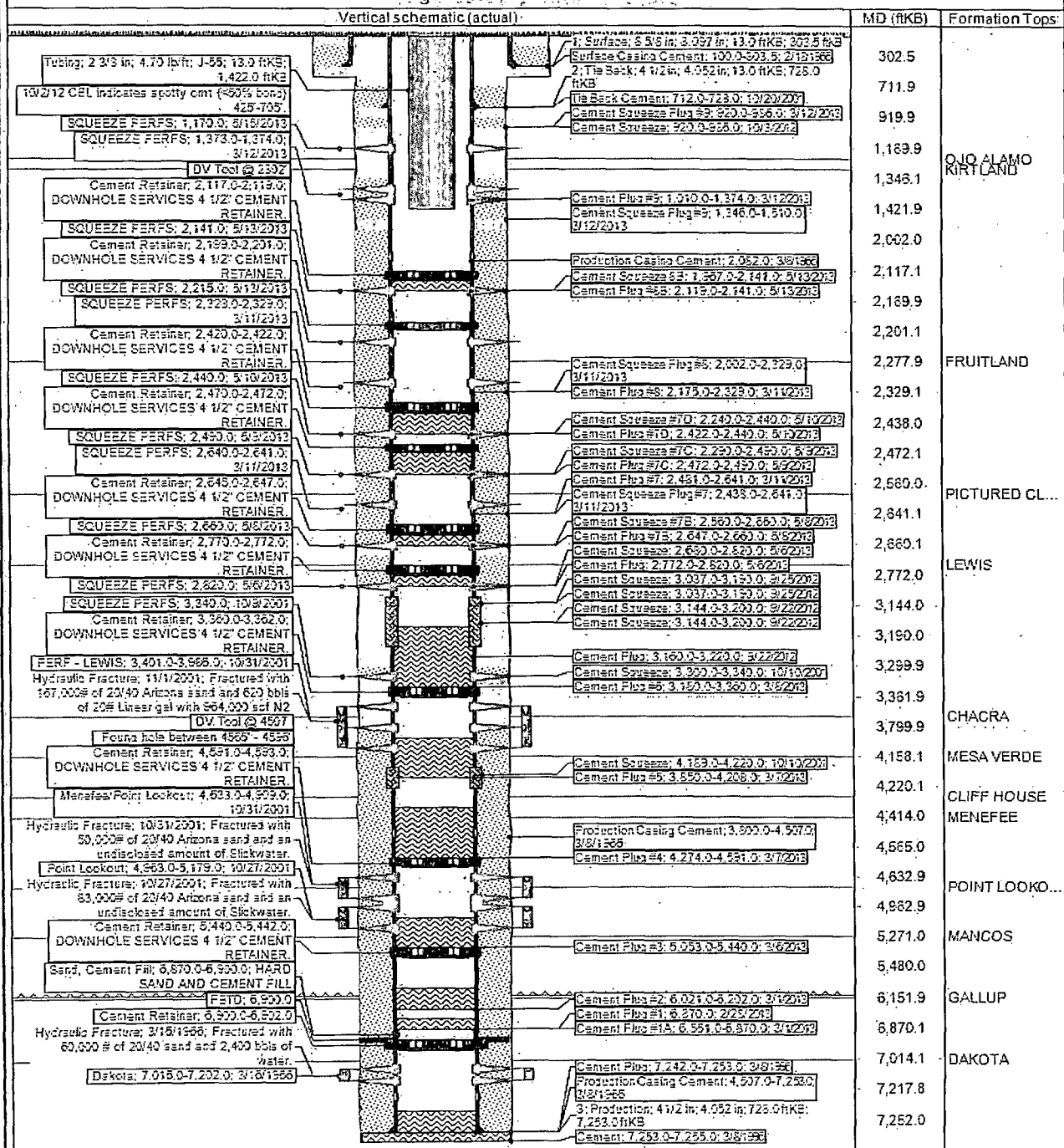
ConocoPhillips

Well Name: NYE SRC #14

Current Schematic

API/UVI	State Legal Location	Field Name	Series No.	State/Province	Well Configuration Type
3004511663	D13-030N-011W-J	BLANCE MEASURES (FRACATED)		NEW MEXICO	
Ground Elevation (ft)	Original K&RT Elevation (ft)	K&S Ground Distance (ft)	K&S Casing, Flange Distance (ft)	K&S Tubing, Flange Distance (ft)	
6,107.00	6,120.00	13.00	6,120.00	6,120.00	

Original Hole: 5/6/2014 3:14:09 PM



ConocoPhillips

Schematic - Proposed NYE SRC #14

District NORTH	Field Name BLANCO MESA VERDE (PRORATED GAS)	API / UWI 3004511663	County SAN JUAN	State/Province NEW MEXICO
Original Spud Date 2/16/1966	Surf Loc 013-030N-011W-J	East/West Distance (ft) 1,570.00	East/West Reference FEL	N/S Dist (ft) 1,780.00
N/S Ref FSL				
Original Hole, 1/1/2020 1:45:00 AM				

Vertical schematic (actual)		MD (ftKB)	Formation Tops
Cement Retainer; 304.0-305.0 10/2/12 CBL indicates spotty cmt ($<50\%$ bond) 425'-705'		303.5	
Cement Retainer; 1,122.0-1,123.0		354.0	
DV Tool @ 2802		919.9	
Cement Retainer; 2,117.0-2,119.0 DOWNHOLE SERVICES 4 1/2" CEMENT RETAINER.		1,123.0	RIO ALA RIFT LAND
Cement Retainer; 2,199.0-2,201.0 DOWNHOLE SERVICES 4 1/2" CEMENT RETAINER.		1,325.1	
Cement Retainer; 2,420.0-2,422.0 DOWNHOLE SERVICES 4 1/2" CEMENT RETAINER.		1,509.8	
Cement Retainer; 2,470.0-2,472.0 DOWNHOLE SERVICES 4 1/2" CEMENT RETAINER.		2,082.0	
Cement Retainer; 2,645.0-2,647.0 DOWNHOLE SERVICES 4 1/2" CEMENT RETAINER.		2,169.9	
Cement Retainer; 2,770.0-2,772.0 DOWNHOLE SERVICES 4 1/2" CEMENT RETAINER.		2,214.9	FRUITLAND
Cement Retainer; 3,360.0-3,362.0 DOWNHOLE SERVICES 4 1/2" CEMENT RETAINER.		2,328.1	
Hydraulic Fracture; 11/1/2001; Fractured with 167,000# of 20/40 Arizona sand and 620 bbls of 20# Linear gel with 964,000 scf N2		2,438.0	
DV Tool @ 4507		2,481.0	
Found hole between 4565' - 4596'		2,640.1	PICTURE...
Cement Retainer; 4,591.0-4,593.0 DOWNHOLE SERVICES 4 1/2" CEMENT RETAINER.		2,660.1	LEWIS
Hydraulic Fracture; 10/31/2001; Fractured with 50,000# of 20/40 Arizona sand and an undisclosed amount of Slickwater.		2,819.9	
Hydraulic Fracture; 10/27/2001; Fractured with 83,000# of 20/40 Arizona sand and an undisclosed amount of Slickwater.		3,180.1	
Cement Retainer; 5,440.0-5,442.0 DOWNHOLE SERVICES 4 1/2" CEMENT RETAINER.		3,299.9	
Sand, Cement Fill; 6,870.0-6,900.0; HARD SAND AND CEMENT FILL		3,400.9	CHACRA
PBTD; 6,900.0		3,985.9	MESA VE...
Cement Retainer; 6,900.0-6,902.0		4,220.1	CLIFF HO...
Hydraulic Fracture; 3/16/1966; Fractured with 60,000 # of 20/40 sand and 2,400 bbls of water.		4,505.9	MENELEE
		4,592.8	POINT LO...
		4,962.9	MANCOS
		5,440.0	
		6,021.0	GALLUP
		6,870.1	
		7,016.1	DAKOTA
		7,242.1	

ConocoPhillips

Schematic - Proposed NYE SRC #14

District NORTH	Field Name BLANCO, MESAVERDE (PRORATED GAS)	API / UWI 3004511663	County SAN JUAN	State/Province NEW MEXICO
Original Spud Date 2/16/1966	Surf Loc 013-030N-011W-J	East/West Distance (ft) 1,570.00	East/West Reference FEL	N/S Dist (ft) 1,780.00
N/S Ref FSL				
Original Hole, 1/1/2020 1:45:00 AM				

