

UNITED STATES
DEPARTMENT OF THE INTERIOR
BUREAU OF LAND MANAGEMENT

RECEIVED

FORM APPROVED
OMB No. 1004-0137
Expires: July 31, 2010

JUL 10 2014

5. Lease Serial No.
NMNM-SF-33054

6. If Indian, Allottee or Tribe Name

SUNDRY NOTICES AND REPORTS ON WELLS
Do not use this form for proposals to drill or to re-enter an abandoned well. Use Form 3160-3 (APD) for such proposals.

SUBMIT IN TRIPLICATE - Other instructions on page 2.

1. Type of Well

☐ Oil Well

☒ Gas Well

☐ Other

7. If Unit of CA/Agreement, Name and/or No.

8. Well Name and No.

Trail Canyon 101S

2. Name of Operator

Burlington Resources Oil & Gas Company LP

9. API Well No.

30-045-33098

3a. Address

PO Box 4289, Farmington, NM 87499

3b. Phone No. (include area code)

(505) 326-9700

10. Field and Pool or Exploratory Area

Basin Fruitland Coal

4. Location of Well (Footage, Sec., T., R., M., or Survey Description)

Surface Unit K (NESW), 1855' FSL & 1570' FWL, Sec. 8, T32N, R8W

11. Country or Parish, State

San Juan New Mexico

12. CHECK THE APPROPRIATE BOX(ES) TO INDICATE NATURE OF NOTICE, REPORT OR OTHER DATA

TYPE OF SUBMISSION

☒ Notice of Intent

☐ Subsequent Report

☐ Final Abandonment Notice

TYPE OF ACTION

☐ Acidize

☐ Alter Casing

☐ Casing Repair

☐ Change Plans

☐ Convert to Injection

☐ Deepen

☐ Fracture Treat

☐ New Construction

☒ Plug and Abandon

☐ Plug Back

☐ Production (Start/Resume)

☐ Reclamation

☐ Recomplete

☐ Temporarily Abandon

☐ Water Disposal

☐ Water Shut-Off

☐ Well Integrity

☐ Other

13. Describe Proposed or Completed Operation: Clearly state all pertinent details, including estimated starting date of any proposed work and approximate duration thereof.

If the proposal is to deepen directionally or recompleat horizontally, give subsurface locations and measured and true vertical depths of all pertinent markers and zones. Attach the bond under which the work will be performed or provide the Bond No. on file with BLM/BIA. Required subsequent reports must be filed within 30 days following completion of the involved operations. If the operation results in a multiple completion or recompleat in a new interval, a Form 3160-4 must be filed once Testing has been completed. Final Abandonment Notices must be filed only after all requirements, including reclamation, have been completed and the operator has determined that the site is ready for final inspection.)

Burlington Resources requests permission to P&A the subject well per the attached procedure, current and proposed wellbore schematics. A Closed Loop system will be utilized for this P&A. This location has FEE surface.

**SEE ATTACHED FOR
CONDITIONS OF APPROVAL**

OIL CONS. DIV DIST. 3

JUL 18 2014

**Notify NMOCD 24 hrs
prior to beginning
operations**

**BLM'S APPROVAL OR ACCEPTANCE OF THIS
ACTION DOES NOT RELIEVE THE LESSEE AND
OPERATOR FROM OBTAINING ANY OTHER
AUTHORIZATION REQUIRED FOR OPERATIONS
ON FEDERAL AND INDIAN LANDS**

14. I hereby certify that the foregoing is true and correct. Name (Printed/Typed)

Dollie L. Busse

Title **Staff Regulatory Technician**

Signature

Dollie L. Busse

Date

7-10-14

THIS SPACE FOR FEDERAL OR STATE OFFICE USE

Approved by

Troy Salvors

Title **Petroleum Eng.**

Date **7/16/2014**

Conditions of approval, if any, are attached. Approval of this notice does not warrant or certify that the applicant holds legal or equitable title to those rights in the subject lease which would entitle the applicant to conduct operations thereon.

Office **FFO**

Title 18 U.S.C. Section 1001 and Title 43 U.S.C. Section 1212, make it a crime for any person knowingly and willfully to make to any department or agency of the United States any false, fictitious or fraudulent statements or representations as to any matter within its jurisdiction.

(Instruction on page 2)

NMOCD

5

ConocoPhillips
TRAIL CANYON 101S
Expense - P&A

Lat 36° 59' 46.932" N

Long 107° 41' 59.514" W

PROCEDURE

This project requires a NMOCD C-144 CLEZ Closed-Loop System Permit for the use of an A-Plus steel tank to handle waste fluids circulated from the well and cement wash up.

1. Hold pre-job safety meeting. Comply with all NMOCD, BLM, and COPC safety and environmental regulations. Test rig anchors prior to moving in rig.
2. MIRU workover rig. Check casing, tubing, and bradenhead pressures and record them in Wellview. **If there is pressure on the BH, contact the Wells Engineer.**
3. Remove existing piping on casing valve. RU blow lines from casing valves and being blowing down casing pressure. Kill well as necessary. Ensure well is dead or on a vacuum.
4. TOOH w/ rod string and LD (per pertinent data sheet).
Size: 3/4" Length: 3,616'
5. ND wellhead and NU BOPE. Pressure and function test BOP to 250 psi low and 1000 psi over SICP high to a maximum of 2000 psi held and charted for 10 minutes as per COP Well Control Manual. PU and remove tubing hanger
6. TOOH with tubing (per pertinent data sheet).
Tubing size: 2-3/8", 4.7 ppf, J-55 Set Depth: 3,634' (KB) KB: 12'
7. PU 3-7/8" bit and watermelon mill and round trip as deep as possible above top perforation at 3,270'.
8. PU 4-1/2" CR on tubing, and set at 3,220'. Pressure test tubing to 1000 psi. Sting out of CR. Load hole, and pressure test casing to 800 psi. *If casing does not test, then spot or tag subsequent plugs as appropriate.* POOH w/ tubing.
9. RU wireline and run CBL with 500 psi on casing from CIBP to surface to identify TOC. *Adjust plugs as necessary for new TOC.*

All cement volumes use 100% excess outside pipe and 50' excess inside pipe. The stabilizing wellbore fluid will be 8.3 ppg, sufficient to balance all exposed formation pressures. All cement will be ASTM Class B mixed at 15.6 ppg with a 1.18 cf/sk yield.

10. Plug 1 (Perforations, Pictured Cliffs, Fruitland formation tops, 2,882-3,220', 30 Sacks Class B Cement)

Mix 30 sx Class B cement and spot a balanced plug inside the casing to cover the perforations, Pictured Cliffs and Fruitland formation tops. PUH.

See COA

12. Plug 2 (Kirtland and Ojo Alamo formation tops, 2,070-2,244', 18 Sacks Class B Cement)

Mix 18 sx Class B cement and spot a balanced plug inside the casing to cover the Kirtland and Ojo Alamo formation tops. PUH.

See COA

13. Plug 3 (Nacimiento formation top, 686-786', 12 Sacks Class B Cement)

Mix 12 sx Class B cement and spot a balanced plug inside the casing to cover the Nacimiento formation top. PUH.

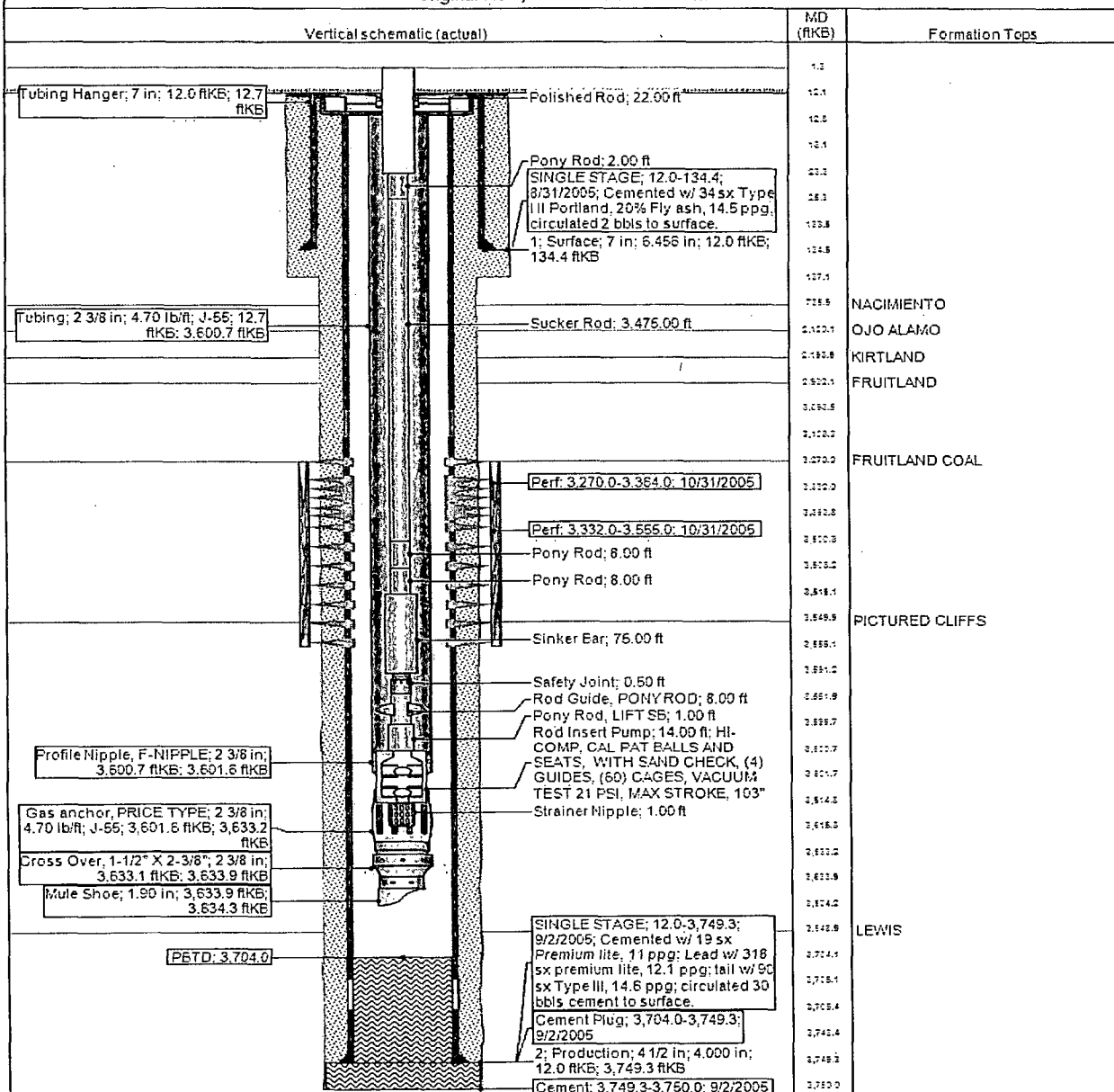
14. Plug 4 (Surface casing shoe and surface, 0-184', 18 Sacks Class B Cement)

Connect the pump line to the bradenhead valve and attempt to pressure test the BH annulus to 300 psi. Note the volume to load. If the BH annulus holds pressure, then establish circulation out casing valve with water. Mix 18 sx Class B cement and spot balanced plug inside casing from 184' to surface, circulating good cement out casing valve. TOOH and LD tubing. SI well and WOC. If the BH annulus does not test, then perforate at the appropriate depth and attempt to circulate cement to surface, filling the casing and the BH annulus to surface. Shut well in and WOC.

15. Nipple down BOP and cut off casing below the casing flange. Install P&A marker with cement to comply with regulations. Rig down, move off location, cut off anchors, and restore location.

District NORTH	Field Name BASIN (FRUITLAND COAL)	API / UWI 3004533098	County SAN JUAN	State/Province NEW MEXICO
Original Spud Date 6/30/2005	Surface Legal Location NMPM.008-032N-008W	East/West Distance (ft) 1,570.00	East/West Reference W	North/South Distance (ft) 1,855.00
				North/South Reference S

Original Hole, 5/19/2014 9:44:15 AM



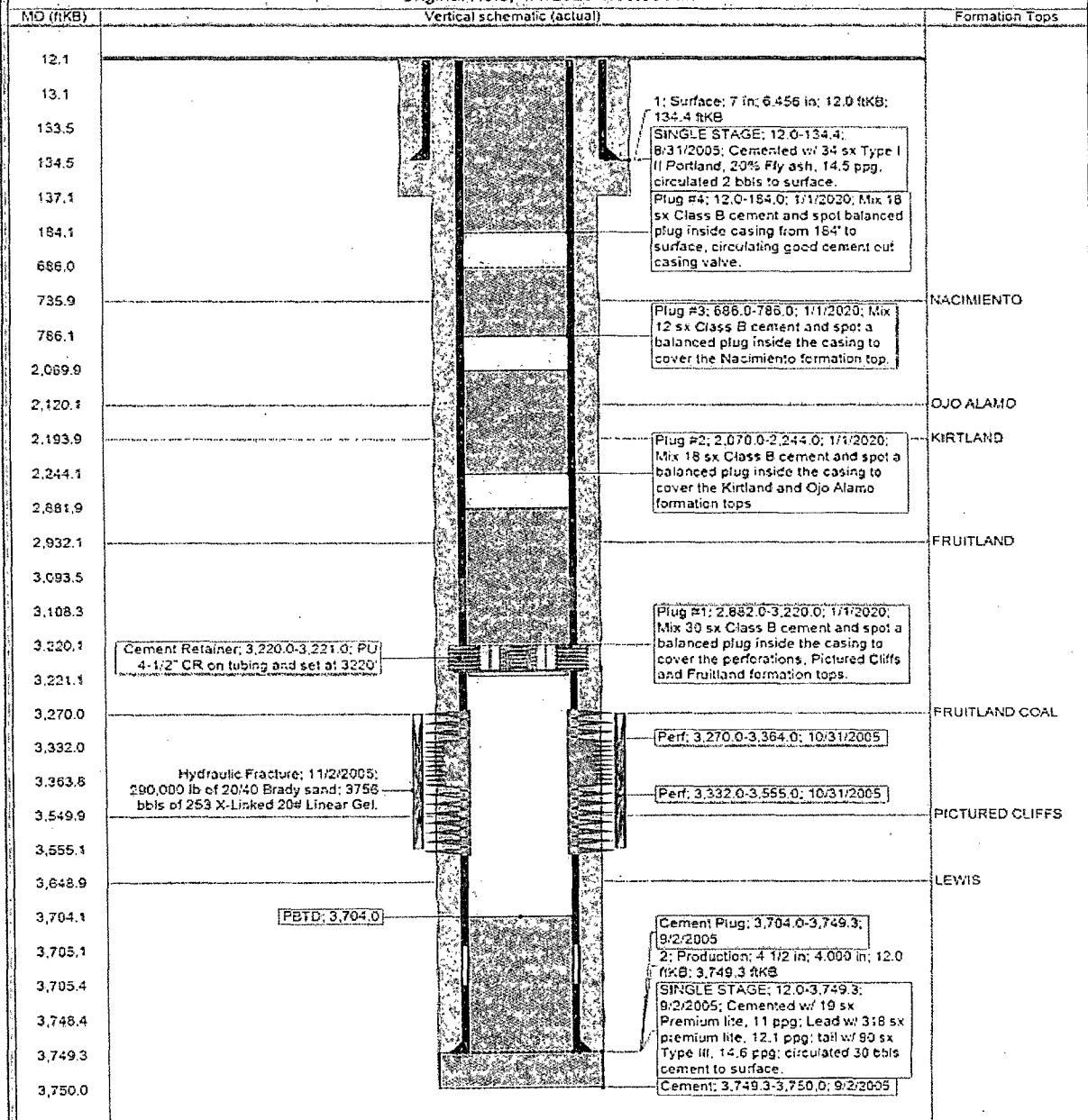
ConocoPhillips

Well Name: **TRAIL CANYON #101S**

Proposed Schematic

API Number 300453309S	Surface Legal Location NMPPM.008-032N-002W	Field Name BASINS (FRUITLAND COAL)	License No.	State/Province NEW MEXICO	Well Completion Type
Ground Elevation (ft) 6,646.00	Original KB RT Elevation (ft) 6,658.00	KB-Grading Distance (ft) 12.00	KB-Casing Flange Distance (ft) 6,658.00	KB-Tubing Hanger Distance (ft) 6,658.00	

Original Hole, 1/1/2020 1:30:00 AM



UNITED STATES DEPARTMENT OF THE INTERIOR
BUREAU OF LAND MANAGEMENT
FARMINGTON DISTRICT OFFICE
6251 COLLEGE BLVD.
FARMINGTON, NEW MEXICO 87402

Attachment to notice of
Intention to Abandon:

Re: Permanent Abandonment
Well: Trail Canyon #101S

CONDITIONS OF APPROVAL

1. Plugging operations authorized are subject to the attached "General Requirements for Permanent Abandonment of Wells on Federal and Indian Lease."
2. Farmington Office is to be notified at least 24 hours before the plugging operations commence (505) 564-7750.
3. The following modifications to your plugging program are to be made:
 - a) Set plug #2 (2408-2200) ft. to cover the Kirtland and Ojo Alamo tops. Adjust cement volume accordingly.
 - b) Set plug #3 (992-892) ft. to cover the Nacimiento top.

Operator will run a CBL from 3220 ft. to surface to verify cement top. Submit electronic copy of the log for verification to the following BLM address: tsalyers@blm.gov

You are also required to place cement excesses per 4.2 and 4.4 of the attached General Requirements.

Office Hours: 7:45 a.m. to 4:30 p.m.