

RECEIVED

Form 3160-5
(August 2007)

UNITED STATES
DEPARTMENT OF THE INTERIOR
BUREAU OF LAND MANAGEMENT

AUG 01 2014

FORM APPROVED
OMB No. 1004-0137
Expires: July 31, 2010

SUNDRY NOTICES AND REPORTS ON WELLS
Do not use this form for proposals to drill or to re-enter an abandoned well. Use Form 3160-3 (APD) for such proposals.

SUBMIT IN TRIPLICATE - Other instructions on page 2.

1. Type of Well

☐ Oil Well

☒ Gas Well

☐ Other

OIL CONS. DIV DIST. 3

2. Name of Operator

Burlington Resources Oil & Gas Company LP

AUG 08 2014

3a. Address

PO Box 4289, Farmington, NM 87499

3b. Phone No. (include area code)

(505) 326-9700

5. Lease Serial No.

SF-078741

6. If Indian, Allottee or Tribe Name

7. If Unit of CA/Agreement, Name and/or No.

San Juan 30-6 Unit

8. Well Name and No.

San Juan 30-6 Unit 486S

9. API Well No.

30-039-27760

10. Field and Pool or Exploratory Area

Basin FC

4. Location of Well (Footage, Sec., T., R., M., or Survey Description)

Surface

UL O (SWSE), 770' FSL & 1940' FEL, Sec. 23, T30N, R6W

11. Country or Parish, State

Rio Arriba

New Mexico

12. CHECK THE APPROPRIATE BOX(ES) TO INDICATE NATURE OF NOTICE, REPORT OR OTHER DATA

TYPE OF SUBMISSION

TYPE OF ACTION

☒ Notice of Intent

☐ Acidize

☐ Deepen

☐ Production (Start/Resume)

☐ Water Shut-Off

☐ Subsequent Report

☐ Alter Casing

☐ Fracture Treat

☐ Reclamation

☐ Well Integrity

☐ Casing Repair

☐ New Construction

☐ Recomplete

☐ Other

☐ Final Abandonment Notice

☐ Convert to Injection

☒ Plug and Abandon

☐ Temporarily Abandon

☐ Water Disposal

13. Describe Proposed or Completed Operation: Clearly state all pertinent details, including estimated starting date of any proposed work and approximate duration thereof.

If the proposal is to deepen directionally or recompleat horizontally, give subsurface locations and measured and true vertical depths of all pertinent markers and zones. Attach the bond under which the work will be performed or provide the Bond No. on file with BLM/BIA. Required subsequent reports must be filed within 30 days following completion of the involved operations. If the operation results in a multiple completion or recompleat in a new interval, a Form 3160-4 must be filed once Testing has been completed. Final Abandonment Notices must be filed only after all requirements, including reclamation, have been completed and the operator has determined that the site is ready for final inspection.)

Burlington Resources requests permission to P&A the subject well bore per the attached procedure, current & proposed well bore schematics. The Pre P&AA onsite was held on 7/30/14 w/ Bob Switzer. The revegetation plan is attached. A closed loop system will be utilized for this P&A.

BLM'S APPROVAL OR ACCEPTANCE OF THIS ACTION DOES NOT RELIEVE THE LESSEE AND OPERATOR FROM OBTAINING ANY OTHER AUTHORIZATION REQUIRED FOR OPERATIONS ON FEDERAL AND INDIAN LANDS

Notify NMOC D 24 hrs
prior to beginning
operations

**SEE ATTACHED FOR
CONDITIONS OF APPROVAL**

14. I hereby certify that the foregoing is true and correct. Name (Printed/Typed)

Kenny Davis

Title Staff Regulatory Technician

Signature

Date

8/1/2014

THIS SPACE FOR FEDERAL OR STATE OFFICE USE

Approved by

Troy Salyers

Title Petroleum Eng.

Date 8/6/2014

Conditions of approval, if any, are attached. Approval of this notice does not warrant or certify that the applicant holds legal or equitable title to those rights in the subject lease which would entitle the applicant to conduct operations thereon.

Office FFO

Title 18 U.S.C. Section 1001 and Title 43 U.S.C. Section 1212, make it a crime for any person knowingly and willfully to make to any department or agency of the United States any false, fictitious or fraudulent statements or representations as to any matter within its jurisdiction.

(Instruction on page 2)

NMOC D

ConocoPhillips
SAN JUAN 30-6 UNIT 486S
Expense - P&A

Lat 36° 47' 34.008" N

Long 107° 25' 45.48" W

PROCEDURE

This project requires the use of an A-Plus steel tank to handle waste fluids circulated from the well and cement wash up.

1. Hold pre-job safety meeting. Comply with all NMOC, BLM, and COPC safety and environmental regulations. Test rig anchors prior to moving in rig.

2. MIRU workover rig. Check casing, tubing, and bradenhead pressures and record them in Wellview. **If there is pressure on the BH, contact the Wells Engineer.**

3. Remove existing piping on casing valve. RU blow lines from casing valves and being blowing down casing pressure. Kill well as necessary. Ensure well is dead or on a vacuum.

4. TOOH w/ rod string and LD (per pertinent data sheet).

Size: 3/4"

Set Depth: 3402 ftKB

5. ND wellhead and NU BOPE. Pressure and function test BOP to 250 psi low and 1000 psi over SICP high to a maximum of 2000 psi held and charted for 10 minutes as per COP Well Control Manual. PU and remove tubing hanger

6. TOOH with tubing (per pertinent data sheet).

Tubing size: 2-3/8" 4.7# J-55 EUE

Set Depth: 3411 ftKB KB: 12 ft

7. PU 6-1/4" bit and watermelon mill and round trip as deep as possible above top of liner @ 3171'.

8. PU 7" CR on tubing, and set @ 3161'. Pressure test tubing to 1000 psi. Sting out of CR. Load hole, and pressure test casing to 800 psi. *If casing does not test, spot or tag subsequent plugs as appropriate.* POOH w/ tubing.

9. RU wireline and run CBL with 500 psi on casing from CR to surface to identify TOC. *Adjust plugs as necessary for new TOC.*

All cement volumes use 100% excess outside pipe and 50' excess inside pipe. The stabilizing wellbore fluid will be 8.3 ppg, sufficient to balance all exposed formation pressures. All cement will be ASTM Class B mixed at 15.6 ppg with a 1.18 cf/sk yield.

See COA

7. Plug 1 (Fruitland Coal, 3063-3161', 29 Sacks Class B Cement)

Mix 29 sx Class B cement and spot a balanced plug inside the casing to cover the Fruitland formation top. PUH.

See COA

8. Plug 2 (Kirtland & Ojo Alamo, 2552-2761', 50 Sacks Class B Cement)

Mix 50 sx Class B cement and spot a balanced plug inside the casing to cover the Kirtland and OJO Alamo formation tops. PUH.

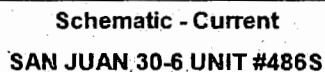
9. Plug 3 (Nacimiento, 1214-1314', 29 Sacks Class B Cement)

Mix 29 sx Class B cement and spot a balanced plug inside the casing to cover the Nacimiento formation top. PUH.

10. Plug 4 (Surface Plug, 0-369', 81 Sacks Class B Cement)

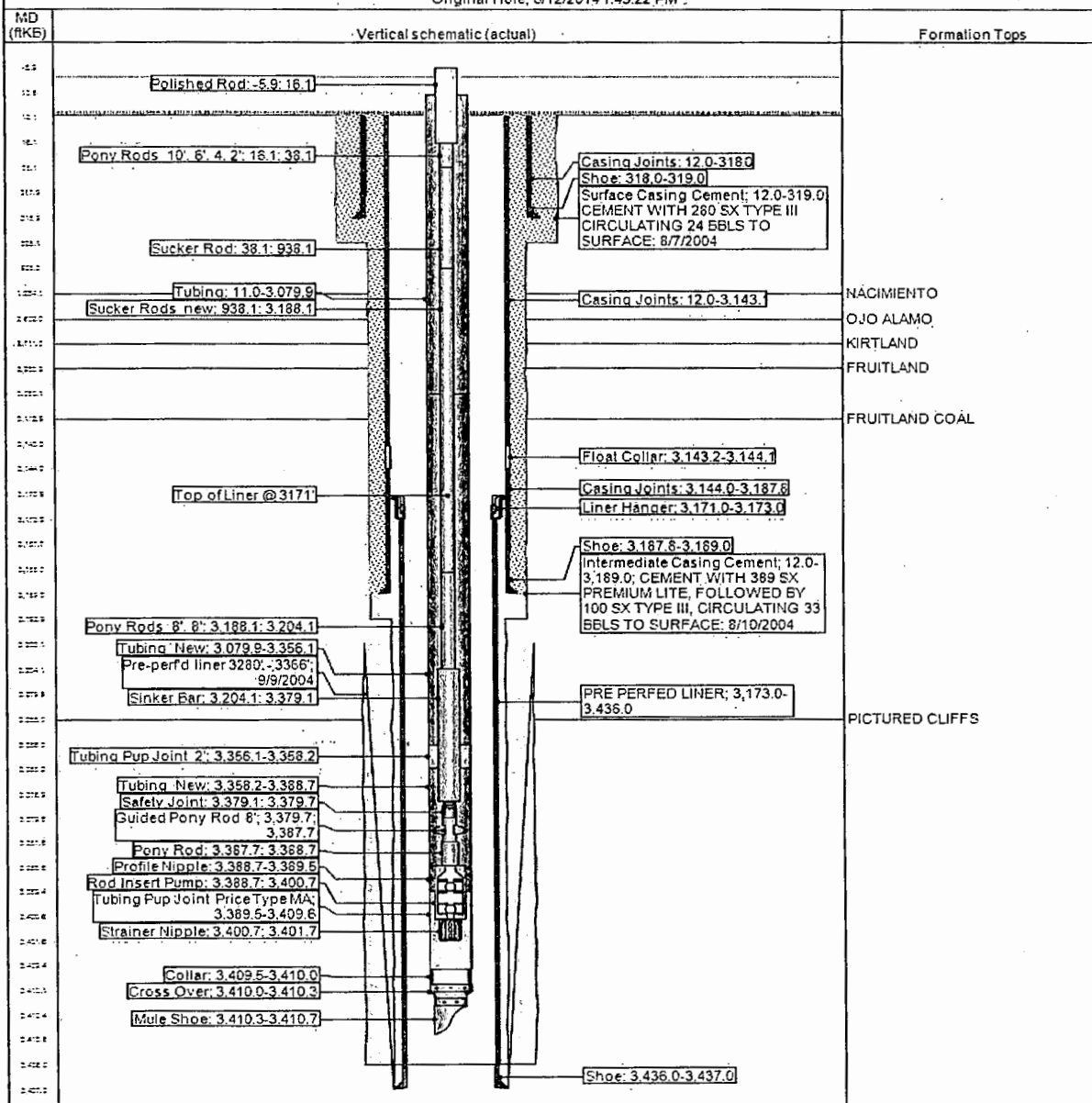
Connect the pump line to the bradenhead valve and attempt to pressure test the BH annulus to 300 psi. Note the volume to load. If the BH annulus holds pressure, establish circulation out casing valve with water. Mix 81 sx Class B cement and spot balanced plug inside casing from 369' to surface, circulating good cement out casing valve. TOOH and LD tubing. SI well and WOC. If the BH annulus does not test, perforate at the appropriate depth and attempt to circulate cement to surface, filling the casing and the BH annulus to surface. Shut well in and WOC.

11. Nipple down BOP and cut off casing below the casing flange. Install P&A marker with cement to comply with regulations. Rig down, move off location, cut off anchors, and restore location.



District	Field Name	API / UWI	County	State/Province	
NORTH	BASIN (FRUITLAND COAL)	3003927760	RIO ARRIBA	NEW MEXICO	
Original Spud Date	Surface Legal Location	East/West Distance (ft)	East/West Reference	North/South Distance (ft)	North/South Reference
8/7/2004	023-030N-096W-0	1,940.00	FEL	770.00	FSL

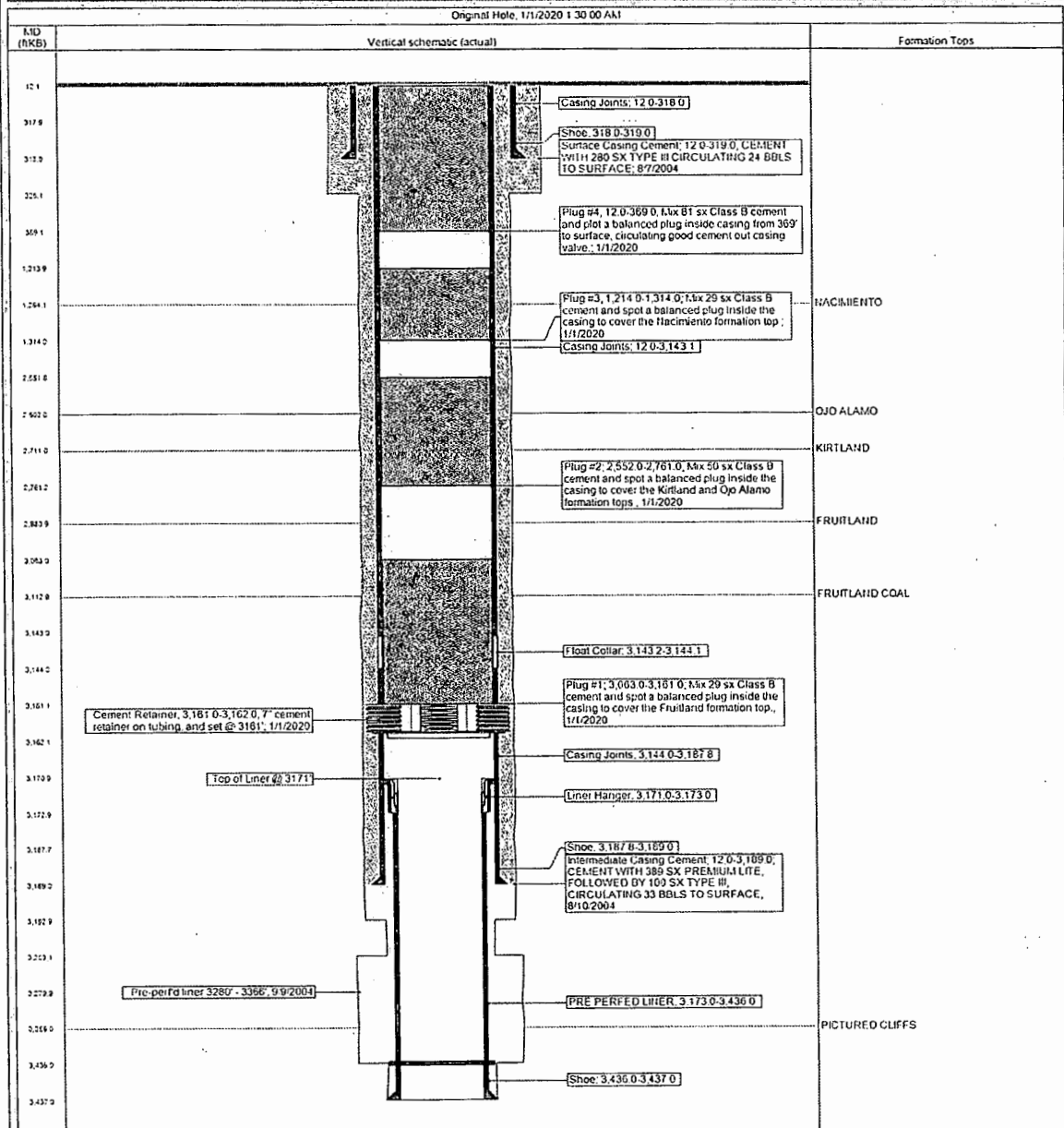
Original Hole, 6/12/2014 1:43:22 PM :



Proposed Schematic

Well Name: **SAN JUAN 30-6 UNIT #486S**

API/ UWI 3003927760	Surface Legal Location 023-030N-006W-O	Field Name BASIN (FRUITLAND COAL)	License No	State/Province NEW MEXICO	Well Configuration Type
Ground Elevation (ft) 6,552.00	Original KB/RT Elevation (ft) 6,564.00	KB Ground Distance (ft) 12.00	KB Casing Flange Distance (ft) 6,564.00	KB-Tubing Hanger Distance (ft) 6,564.00	



UNITED STATES DEPARTMENT OF THE INTERIOR
BUREAU OF LAND MANAGEMENT
FARMINGTON DISTRICT OFFICE
6251 COLLEGE BLVD.
FARMINGTON, NEW MEXICO 87402

Attachment to notice of
Intention to Abandon:

Re: Permanent Abandonment
Well: San Juan 30-6 Unit #486S

CONDITIONS OF APPROVAL

1. Plugging operations authorized are subject to the attached "General Requirements for Permanent Abandonment of Wells on Federal and Indian Lease."
2. Farmington Office is to be notified at least 24 hours before the plugging operations commence (505) 564-7750.
3. The following modifications to your plugging program are to be made:
 - a) Bring the top of plug #1 up to 3000 ft. to cover the Fruitland Coal top. Adjust cement volume accordingly.
 - b) Bring the top of plug #2 up to 2451 ft. to cover the Kirtland and Ojo Alamo tops. Adjust cement volume accordingly.

Operator will run a CBL to verify cement top. Submit electronic copy of the log for verification to the following BLM address: tsalyers@blm.gov

You are also required to place cement excesses per 4.2 and 4.4 of the attached General Requirements.

Office Hours: 7:45 a.m. to 4:30 p.m.