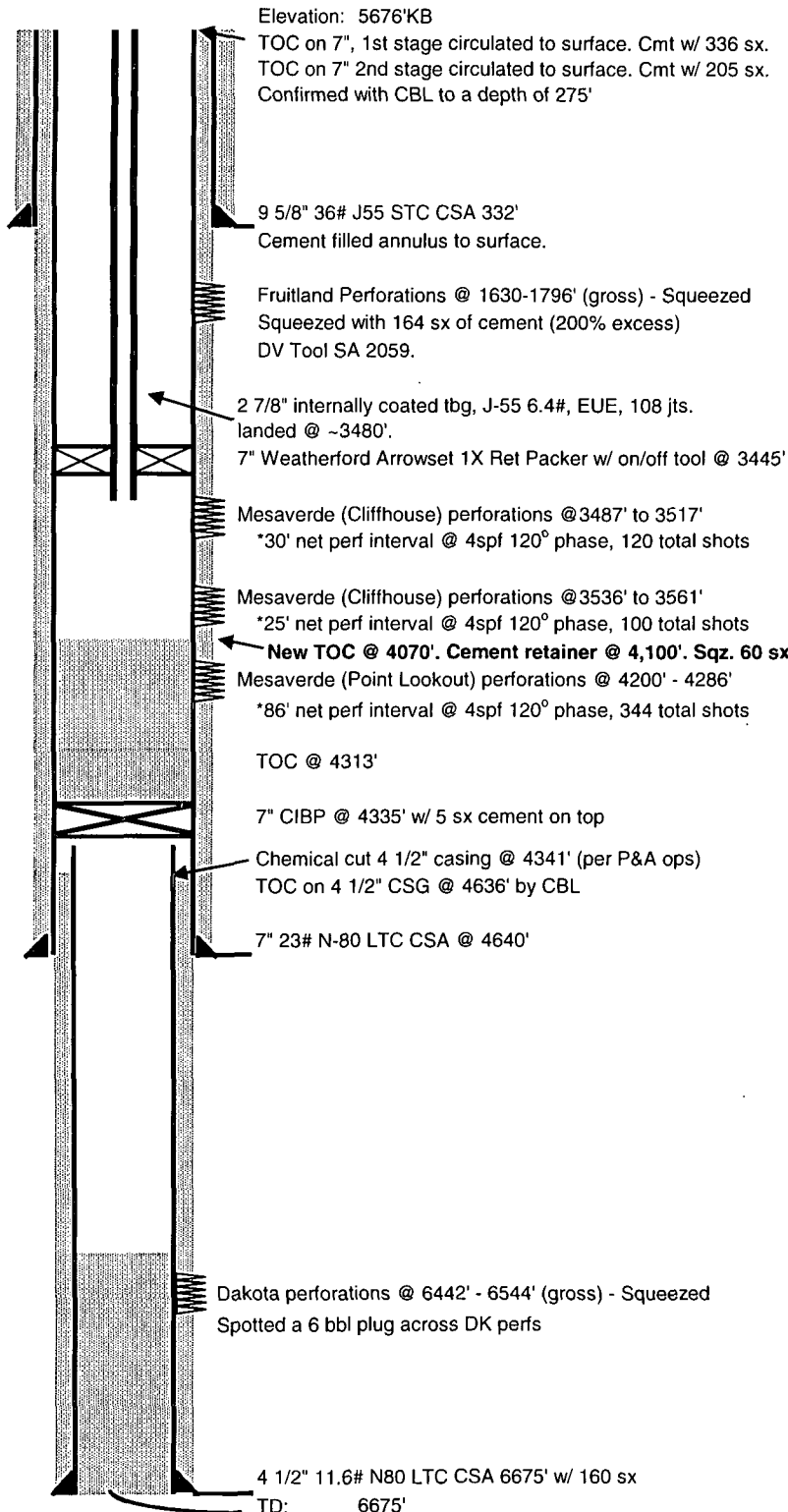


30 045- 33583

ENERVEST Rio Bravo #5 SWD Schematic



Location: 1505' FNL, 1245' FWL,
Sec 27, T31N, R13W,
San Juan County, New Mexico

Field: La Plata
Basin Dakota/Blanco Mesa Verde

API #: 30-045-33583
Spud Date: October 2, 2006

OIL CONS. DIV DIST. 3

AUG 18 2014

Geoprognois:

Fruitland Coal - 1226'
Pictured Cliffs - 1805'
Lewis - 1999'
Cliffhouse - 3398'
Menefee - 3517'
Point Lookout - 4199'
Gallup - 5771'
Dakota - 6392'