

District I
1625 N. French Dr., Hobbs, NM 88240
District II
811 S. First St., Artesia, NM 88210
District III
1000 Rio Brazos Road, Aztec, NM 87410
District IV
1220 S. St. Francis Dr., Santa Fe, NM 87505

State of New Mexico
Energy Minerals and Natural Resources
Department
Oil Conservation Division
1220 South St. Francis Dr.
Santa Fe, NM 87505

Form C-144
Revised June 6, 2013

For temporary pits, below-grade tanks, and multi-well fluid management pits, submit to the appropriate NMOCD District Office.
For permanent pits submit to the Santa Fe Environmental Bureau office and provide a copy to the appropriate NMOCD District Office.

Pit, Below-Grade Tank, or
Proposed Alternative Method Permit or Closure Plan Application

- Type of action: ☒ Below grade tank registration
☐ Permit of a pit or proposed alternative method
☐ Closure of a pit, below-grade tank, or proposed alternative method
☐ Modification to an existing permit/or registration
☐ Closure plan only submitted for an existing permitted or non-permitted pit, below-grade tank, or proposed alternative method

Instructions: Please submit one application (Form C-144) per individual pit, below-grade tank or alternative request

Please be advised that approval of this request does not relieve the operator of liability should operations result in pollution of surface water, ground water or the environment. Nor does approval relieve the operator of its responsibility to comply with any other applicable governmental authority's rules, regulations or ordinances.

1.
Operator: Logos Operating, LLC. OGRID #: 289408 **OIL CONS. DIV DIST. 3**
Address: 4001 North Butler Ave. Building 7101, Farmington, NM 87401
Facility or well name: Warner-Caldwell 3B **JUL 22 2014**
API Number: 30-045-35506 OCD Permit Number: _____
U/L or Qtr/Qtr B Section 08 Township 23N Range 08W County: San Juan
Center of Proposed Design: Latitude 36.248056°N Longitude 107.7025°W NAD: ☐ 1927 ☒ 1983
Surface Owner: ☒ Federal ☐ State ☐ Private ☐ Tribal Trust or Indian Allotment

2.
☐ **Pit:** Subsection F, G or J of 19.15.17.11 NMAC
Temporary: ☐ Drilling ☐ Workover
☐ Permanent ☐ Emergency ☐ Cavitation ☐ P&A ☐ Multi-Well Fluid Management Low Chloride Drilling Fluid ☐ yes ☐ no
☐ Lined ☐ Unlined Liner type: Thickness _____ mil ☐ LLDPE ☐ HDPE ☐ PVC ☐ Other _____
☐ String-Reinforced
Liner Seams: ☐ Welded ☐ Factory ☐ Other _____ Volume: _____ bbl Dimensions: L _____ x W _____ x D _____

3.
☒ **Below-grade tank:** Subsection I of 19.15.17.11 NMAC
Volume: 95 bbl Type of fluid: Produced Water ***OCD Conditions of Approval Attached**
Tank Construction material: Metal
☐ Secondary containment with leak detection ☒ Visible sidewalls, liner, 6-inch lift and automatic overflow shut-off
☒ Visible sidewalls and liner ☐ Visible sidewalls only ☒ Other _____
Liner type: Thickness 45 mil ☐ HDPE ☐ PVC ☒ Other LLDPE

4.
☐ **Alternative Method:**
Submittal of an exception request is required. Exceptions must be submitted to the Santa Fe Environmental Bureau office for consideration of approval.

5.
Fencing: Subsection D of 19.15.17.11 NMAC (Applies to permanent pits, temporary pits, and below-grade tanks)
☐ Chain link, six feet in height, two strands of barbed wire at top (Required if located within 1000 feet of a permanent residence, school, hospital, institution or church)
☐ Four foot height, four strands of barbed wire evenly spaced between one and four feet
☒ Alternate. Please specify: 4' hog wire with one strand of barbed wire on top

6.

Netting: Subsection E of 19.15.17.11 NMAC (*Applies to permanent pits and permanent open top tanks*)

☒ Screen ☐ Netting ☐ Other _____

☐ Monthly inspections (If netting or screening is not physically feasible)

7.

Signs: Subsection C of 19.15.17.11 NMAC

☐ 12"x 24", 2" lettering, providing Operator's name, site location, and emergency telephone numbers

☒ Signed in compliance with 19.15.16.8 NMAC

8.

Variances and Exceptions:

Justifications and/or demonstrations of equivalency are required. Please refer to 19.15.17 NMAC for guidance.

Please check a box if one or more of the following is requested, if not leave blank:

☒ Variance(s): Requests must be submitted to the appropriate division district for consideration of approval.

☐ Exception(s): Requests must be submitted to the Santa Fe Environmental Bureau office for consideration of approval.

9.

Siting Criteria (regarding permitting): 19.15.17.10 NMAC

Instructions: The applicant must demonstrate compliance for each siting criteria below in the application. Recommendations of acceptable source material are provided below. Siting criteria does not apply to drying pads or above-grade tanks.

General siting

Ground water is less than 25 feet below the bottom of a low chloride temporary pit or below-grade tank.

- ☒ NM Office of the State Engineer - iWATERS database search; ☐ USGS; ☒ Data obtained from nearby wells

☐ Yes ☒ No
☐ NA

Ground water is less than 50 feet below the bottom of a Temporary pit, permanent pit, or Multi-Well Fluid Management pit.

NM Office of the State Engineer - iWATERS database search; USGS; Data obtained from nearby wells

☐ Yes ☐ No
☐ NA

Within incorporated municipal boundaries or within a defined municipal fresh water well field covered under a municipal ordinance adopted pursuant to NMSA 1978, Section 3-27-3, as amended. (**Does not apply to below grade tanks**)

- Written confirmation or verification from the municipality; Written approval obtained from the municipality

☐ Yes ☐ No

Within the area overlying a subsurface mine. (**Does not apply to below grade tanks**)

- Written confirmation or verification or map from the NM EMNRD-Mining and Mineral Division

☐ Yes ☐ No

Within an unstable area. (**Does not apply to below grade tanks**)

- Engineering measures incorporated into the design; NM Bureau of Geology & Mineral Resources; USGS; NM Geological Society; Topographic map

☐ Yes ☐ No

Within a 100-year floodplain. (**Does not apply to below grade tanks**)

- FEMA map

☐ Yes ☐ No

Below Grade Tanks

Within 100 feet of a continuously flowing watercourse, significant watercourse, lake bed, sinkhole, wetland or playa lake (measured from the ordinary high-water mark).

- Topographic map; Visual inspection (certification) of the proposed site

☐ Yes ☒ No

Within 200 horizontal feet of a spring or a fresh water well used for public or livestock consumption;

- NM Office of the State Engineer - iWATERS database search; Visual inspection (certification) of the proposed site

☐ Yes ☒ No

Temporary Pit using Low Chloride Drilling Fluid (maximum chloride content 15,000 mg/liter)

Within 100 feet of a continuously flowing watercourse, or any other significant watercourse or within 200 feet of any lakebed, sinkhole, or playa lake (measured from the ordinary high-water mark). (Applies to low chloride temporary pits.)

- Topographic map; Visual inspection (certification) of the proposed site

☐ Yes ☐ No

Within 300 feet from a occupied permanent residence, school, hospital, institution, or church in existence at the time of initial application.

- Visual inspection (certification) of the proposed site; Aerial photo; Satellite image

☐ Yes ☐ No

Within 200 horizontal feet of a spring or a private, domestic fresh water well used by less than five households for domestic or stock watering purposes, or 300feet of any other fresh water well or spring, in existence at the time of the initial application.

NM Office of the State Engineer - iWATERS database search; Visual inspection (certification) of the proposed site

☐ Yes ☐ No

Within 100 feet of a wetland.

- US Fish and Wildlife Wetland Identification map; Topographic map; Visual inspection (certification) of the proposed site

☐ Yes ☐ No

Temporary Pit Non-low chloride drilling fluid

Within 300 feet of a continuously flowing watercourse, or any other significant watercourse, or within 200 feet of any lakebed, sinkhole, or playa lake (measured from the ordinary high-water mark).

- Topographic map; Visual inspection (certification) of the proposed site

☐ Yes ☐ No

Within 300 feet from a permanent residence, school, hospital, institution, or church in existence at the time of initial application.

- Visual inspection (certification) of the proposed site; Aerial photo; Satellite image

☐ Yes ☐ No

Within 500 horizontal feet of a spring or a private, domestic fresh water well used by less than five households for domestic or stock watering purposes, or 1000 feet of any other fresh water well or spring, in the existence at the time of the initial application;

- NM Office of the State Engineer - iWATERS database search; Visual inspection (certification) of the proposed site

☐ Yes ☐ No

Within 300 feet of a wetland.

- US Fish and Wildlife Wetland Identification map; Topographic map; Visual inspection (certification) of the proposed site

☐ Yes ☐ No

Permanent Pit or Multi-Well Fluid Management Pit

Within 300 feet of a continuously flowing watercourse, or 200 feet of any other significant watercourse, or lakebed, sinkhole, or playa lake (measured from the ordinary high-water mark).

- Topographic map; Visual inspection (certification) of the proposed site

☐ Yes ☐ No

Within 1000 feet from a permanent residence, school, hospital, institution, or church in existence at the time of initial application.

- Visual inspection (certification) of the proposed site; Aerial photo; Satellite image

☐ Yes ☐ No

Within 500 horizontal feet of a spring or a fresh water well used for domestic or stock watering purposes, in existence at the time of initial application.

- NM Office of the State Engineer - iWATERS database search; Visual inspection (certification) of the proposed site

☐ Yes ☐ No

Within 500 feet of a wetland.

- US Fish and Wildlife Wetland Identification map; Topographic map; Visual inspection (certification) of the proposed site

☐ Yes ☐ No

10.

Temporary Pits, Emergency Pits, and Below-grade Tanks Permit Application Attachment Checklist: Subsection B of 19.15.17.9 NMAC

Instructions: Each of the following items must be attached to the application. Please indicate, by a check mark in the box, that the documents are attached.

- ☒ Hydrogeologic Report (Below-grade Tanks) - based upon the requirements of Paragraph (4) of Subsection B of 19.15.17.9 NMAC
- ☐ Hydrogeologic Data (Temporary and Emergency Pits) - based upon the requirements of Paragraph (2) of Subsection B of 19.15.17.9 NMAC
- ☒ Siting Criteria Compliance Demonstrations - based upon the appropriate requirements of 19.15.17.10 NMAC
- ☒ Design Plan - based upon the appropriate requirements of 19.15.17.11 NMAC
- ☒ Operating and Maintenance Plan - based upon the appropriate requirements of 19.15.17.12 NMAC
- ☒ Closure Plan (Please complete Boxes 14 through 18, if applicable) - based upon the appropriate requirements of Subsection C of 19.15.17.9 NMAC and 19.15.17.13 NMAC

☐ Previously Approved Design (attach copy of design) API Number: _____ or Permit Number: _____

11.

Multi-Well Fluid Management Pit Checklist: Subsection B of 19.15.17.9 NMAC

Instructions: Each of the following items must be attached to the application. Please indicate, by a check mark in the box, that the documents are attached.

- ☐ Design Plan - based upon the appropriate requirements of 19.15.17.11 NMAC
- ☐ Operating and Maintenance Plan - based upon the appropriate requirements of 19.15.17.12 NMAC
- ☐ A List of wells with approved application for permit to drill associated with the pit.
- ☐ Closure Plan (Please complete Boxes 14 through 18, if applicable) - based upon the appropriate requirements of Subsection C of 19.15.17.9 NMAC and 19.15.17.13 NMAC
- ☐ Hydrogeologic Data - based upon the requirements of Paragraph (4) of Subsection B of 19.15.17.9 NMAC
- ☐ Siting Criteria Compliance Demonstrations - based upon the appropriate requirements of 19.15.17.10 NMAC

☐ Previously Approved Design (attach copy of design) API Number: _____ or Permit Number: _____

12.

Permanent Pits Permit Application Checklist: Subsection B of 19.15.17.9 NMAC

Instructions: Each of the following items must be attached to the application. Please indicate, by a check mark in the box, that the documents are attached.

- ☐ Hydrogeologic Report - based upon the requirements of Paragraph (1) of Subsection B of 19.15.17.9 NMAC
☐ Siting Criteria Compliance Demonstrations - based upon the appropriate requirements of 19.15.17.10 NMAC
☐ Climatological Factors Assessment
☐ Certified Engineering Design Plans - based upon the appropriate requirements of 19.15.17.11 NMAC
☐ Dike Protection and Structural Integrity Design - based upon the appropriate requirements of 19.15.17.11 NMAC
☐ Leak Detection Design - based upon the appropriate requirements of 19.15.17.11 NMAC
☐ Liner Specifications and Compatibility Assessment - based upon the appropriate requirements of 19.15.17.11 NMAC
☐ Quality Control/Quality Assurance Construction and Installation Plan
☐ Operating and Maintenance Plan - based upon the appropriate requirements of 19.15.17.12 NMAC
☐ Freeboard and Overtopping Prevention Plan - based upon the appropriate requirements of 19.15.17.11 NMAC
☐ Nuisance or Hazardous Odors, including H₂S, Prevention Plan
☐ Emergency Response Plan
☐ Oil Field Waste Stream Characterization
☐ Monitoring and Inspection Plan
☐ Erosion Control Plan
☐ Closure Plan - based upon the appropriate requirements of Subsection C of 19.15.17.9 NMAC and 19.15.17.13 NMAC

13.

Proposed Closure: 19.15.17.13 NMAC

Instructions: Please complete the applicable boxes, Boxes 14 through 18, in regards to the proposed closure plan.

- Type: ☐ Drilling ☐ Workover ☐ Emergency ☐ Cavitation ☐ P&A ☐ Permanent Pit ☒ Below-grade Tank ☐ Multi-well Fluid Management Pit
☐ Alternative
- Proposed Closure Method: ☒ Waste Excavation and Removal
☐ Waste Removal (Closed-loop systems only)
☐ On-site Closure Method (Only for temporary pits and closed-loop systems)
 ☐ In-place Burial ☐ On-site Trench Burial
☐ Alternative Closure Method

14.

Waste Excavation and Removal Closure Plan Checklist: (19.15.17.13 NMAC) **Instructions:** Each of the following items must be attached to the closure plan. Please indicate, by a check mark in the box, that the documents are attached.

- ☒ Protocols and Procedures - based upon the appropriate requirements of 19.15.17.13 NMAC
☒ Confirmation Sampling Plan (if applicable) - based upon the appropriate requirements of Subsection C of 19.15.17.13 NMAC
☒ Disposal Facility Name and Permit Number (for liquids, drilling fluids and drill cuttings)
☒ Soil Backfill and Cover Design Specifications - based upon the appropriate requirements of Subsection H of 19.15.17.13 NMAC
☒ Re-vegetation Plan - based upon the appropriate requirements of Subsection H of 19.15.17.13 NMAC
☒ Site Reclamation Plan - based upon the appropriate requirements of Subsection H of 19.15.17.13 NMAC

15.

Siting Criteria (regarding on-site closure methods only): 19.15.17.10 NMAC

Instructions: Each siting criteria requires a demonstration of compliance in the closure plan. Recommendations of acceptable source material are provided below. Requests regarding changes to certain siting criteria require justifications and/or demonstrations of equivalency. Please refer to 19.15.17.10 NMAC for guidance.

Ground water is less than 25 feet below the bottom of the buried waste. - NM Office of the State Engineer - iWATERS database search; USGS; Data obtained from nearby wells	<input type="checkbox"/> Yes <input type="checkbox"/> No <input type="checkbox"/> NA
Ground water is between 25-50 feet below the bottom of the buried waste - NM Office of the State Engineer - iWATERS database search; USGS; Data obtained from nearby wells	<input type="checkbox"/> Yes <input type="checkbox"/> No <input type="checkbox"/> NA
Ground water is more than 100 feet below the bottom of the buried waste. - NM Office of the State Engineer - iWATERS database search; USGS; Data obtained from nearby wells	<input type="checkbox"/> Yes <input type="checkbox"/> No <input type="checkbox"/> NA
Within 100 feet of a continuously flowing watercourse, or 200 feet of any other significant watercourse, lakebed, sinkhole, or playa lake (measured from the ordinary high-water mark). - Topographic map; Visual inspection (certification) of the proposed site	<input type="checkbox"/> Yes <input type="checkbox"/> No
Within 300 feet from a permanent residence, school, hospital, institution, or church in existence at the time of initial application. - Visual inspection (certification) of the proposed site; Aerial photo; Satellite image	<input type="checkbox"/> Yes <input type="checkbox"/> No
Within 300 horizontal feet of a private, domestic fresh water well or spring used for domestic or stock watering purposes, in existence at the time of initial application. - NM Office of the State Engineer - iWATERS database; Visual inspection (certification) of the proposed site	<input type="checkbox"/> Yes <input type="checkbox"/> No
Written confirmation or verification from the municipality; Written approval obtained from the municipality	<input type="checkbox"/> Yes <input type="checkbox"/> No
Within 300 feet of a wetland. US Fish and Wildlife Wetland Identification map; Topographic map; Visual inspection (certification) of the proposed site	<input type="checkbox"/> Yes <input type="checkbox"/> No
Within incorporated municipal boundaries or within a defined municipal fresh water well field covered under a municipal ordinance	<input type="checkbox"/> Yes <input type="checkbox"/> No

adopted pursuant to NMSA 1978, Section 3-27-3, as amended.

- Written confirmation or verification from the municipality; Written approval obtained from the municipality

☐ Yes ☐ No

Within the area overlying a subsurface mine.

- Written confirmation or verification or map from the NM EMNRD-Mining and Mineral Division

☐ Yes ☐ No

Within an unstable area.

- Engineering measures incorporated into the design; NM Bureau of Geology & Mineral Resources; USGS; NM Geological Society; Topographic map

☐ Yes ☐ No

Within a 100-year floodplain.

- FEMA map

☐ Yes ☐ No

16.

On-Site Closure Plan Checklist: (19.15.17.13 NMAC) *Instructions: Each of the following items must be attached to the closure plan. Please indicate, by a check mark in the box, that the documents are attached.*

- ☐ Siting Criteria Compliance Demonstrations - based upon the appropriate requirements of 19.15.17.10 NMAC
- ☐ Proof of Surface Owner Notice - based upon the appropriate requirements of Subsection E of 19.15.17.13 NMAC
- ☐ Construction/Design Plan of Burial Trench (if applicable) based upon the appropriate requirements of Subsection K of 19.15.17.11 NMAC
- ☐ Construction/Design Plan of Temporary Pit (for in-place burial of a drying pad) - based upon the appropriate requirements of 19.15.17.11 NMAC
- ☐ Protocols and Procedures - based upon the appropriate requirements of 19.15.17.13 NMAC
- ☐ Confirmation Sampling Plan (if applicable) - based upon the appropriate requirements of 19.15.17.13 NMAC
- ☐ Waste Material Sampling Plan - based upon the appropriate requirements of 19.15.17.13 NMAC
- ☐ Disposal Facility Name and Permit Number (for liquids, drilling fluids and drill cuttings or in case on-site closure standards cannot be achieved)
- ☐ Soil Cover Design - based upon the appropriate requirements of Subsection H of 19.15.17.13 NMAC
- ☐ Re-vegetation Plan - based upon the appropriate requirements of Subsection H of 19.15.17.13 NMAC
- ☐ Site Reclamation Plan - based upon the appropriate requirements of Subsection H of 19.15.17.13 NMAC

17.

Operator Application Certification:

I hereby certify that the information submitted with this application is true, accurate and complete to the best of my knowledge and belief.

Name (Print): Tamra Sessions

Title: Operations Technician

Signature:  Date: 7-22-14 (original 4-17-14)

e-mail address: tsessions@logosresourcesllc.com

Telephone: 505-330-9333

18.

OCD Approval: ☐ Permit Application (including closure plan) ☐ Closure Plan (only) ☒ OCD Conditions (see attachment)

OCD Representative Signature: 

Approval Date: 7/25/14

Title: Environmental Spec

OCD Permit Number: 12039

19.

Closure Report (required within 60 days of closure completion): 19.15.17.13 NMAC

Instructions: Operators are required to obtain an approved closure plan prior to implementing any closure activities and submitting the closure report. The closure report is required to be submitted to the division within 60 days of the completion of the closure activities. Please do not complete this section of the form until an approved closure plan has been obtained and the closure activities have been completed.

☐ Closure Completion Date: _____

20.

Closure Method:

- ☐ Waste Excavation and Removal ☐ On-Site Closure Method ☐ Alternative Closure Method ☐ Waste Removal (Closed-loop systems only)
- ☐ If different from approved plan, please explain.

21.

Closure Report Attachment Checklist: *Instructions: Each of the following items must be attached to the closure report. Please indicate, by a check mark in the box, that the documents are attached.*

- ☐ Proof of Closure Notice (surface owner and division)
- ☐ Proof of Deed Notice (required for on-site closure for private land only)
- ☐ Plot Plan (for on-site closures and temporary pits)
- ☐ Confirmation Sampling Analytical Results (if applicable)
- ☐ Waste Material Sampling Analytical Results (required for on-site closure)
- ☐ Disposal Facility Name and Permit Number
- ☐ Soil Backfilling and Cover Installation
- ☐ Re-vegetation Application Rates and Seeding Technique
- ☐ Site Reclamation (Photo Documentation)

On-site Closure Location: Latitude _____ Longitude _____ NAD: ☐ 1927 ☐ 1983

Operator Closure Certification:

I hereby certify that the information and attachments submitted with this closure report is true, accurate and complete to the best of my knowledge and belief. I also certify that the closure complies with all applicable closure requirements and conditions specified in the approved closure plan.

Name (Print): _____ Title: _____

Signature: _____ Date: _____

e-mail address: _____ Telephone: _____

**Logos Operating, LLC
San Juan Basin
Variance Explanation for BGT**

All requested variances provide equal or better protection of fresh water, public health and the environment.

C-144 Item #3 BGT Design

Rule 19.15.17.11 I. The BGT system is designed to be used as a drain tank only under manual and supervised operations. The BGT's are located at batteries that have primary water tanks so that the BGT is not used as a primary water pit, it is only used as a drain pit for primary tanks. Any fluid drained from the separators will be drained into the BGT manually and under constant supervision to ensure that the tank is not overflowed. Fluid will not be continuously pumped into the BGT, therefore, this design is based on 19.15.17.11.I.4.c. This design and operation is expected to offer equal or better protection to the environment because all operations that utilize the BGT are conducted manually and are supervised versus an automated system that can fail without onsite supervision to address the failure.

C-144 Item #5 Fencing

Rule 19.15.17.11 D (3) The BGT will be contained within the operating berm and Logos will build a fence with 4' hog wire fencing with one strand of barbed wire on top to deter unauthorized access.

BGT Design - Liner

Rule 19.15.17.11 I. An impermeable liner will be installed below the BGT so that any leak in the BGT will flow to a visible point on top of the impermeable liner. The geomembrane liner consists of a 45-mil flexible LLDPE material manufactured by Raven Industries as K45B. This product is four layer reinforced laminated containing no adhesives. The outer layers consist of a high strength polyethylene film manufactured using virgin grade resins and stabilizers for UV resistance in exposed applications. K45B is reinforced with 1300 denier polyester bi-directional scrim reinforcement. It exceeds ASTM D3083 standard by 10%. It is typically used in Brine Pond, Oilfield Pit liner and other industrial applications.

BGT Closure Notification

Rule 19.15.17.13 E. If the surface owner is a public entity (BLM/State/Tribal) then an email notification will be sent, of plans to close the BGT at least 72 hours, but no more than 1 week, prior to any closure operation. The notice will include the well name, API number, and location.

DURA-SKRIM® K30B, K36B & K45B

ISO 9001:2008
CERTIFIED MANAGEMENT SYSTEM

Scrim Reinforced Polyethylene

PRO-FORMA DATA SHEET

PROPERTIES	TEST METHOD	DURA-SKRIM K30B		DURA-SKRIM K36B		DURA-SKRIM K45B	
		Minimum Roll Averages	Typical Roll Averages	Minimum Roll Averages	Typical Roll Averages	Minimum Roll Averages	Typical Roll Averages
APPEARANCE		Black	Black	Black	Black	Black	Black
THICKNESS		27 mil	30 mil	32 mil	36 mil	40 mil	45 mil
WEIGHT LBS/MSF, (OZ/YD ²)		116 (16.7)	125 (18.0)	136 (19.6)	155 (22.3)	175 (25.2)	200 (28.8)
CONSTRUCTION		Dense scrim reinforced polyethylene					
*PLY ADHESION - LBF/IN	ASTM D 6636	17 or FTB	20 or FTB	21 or FTB	28 or FTB	24 or FTB	32 or FTB
TENSILE STRENGTH - LBF/IN	ASTM D 7003	165 MD 159 TD	182 MD 170 TD	170 MD 166 TD	186 MD 175 TD	178 MD 170 TD	195 MD 180 TD
TENSILE ELONGATION AT BREAK % (FILM BREAK)	ASTM D 7003	480 MD 430 TD	540 MD 500 TD	500 MD 450 TD	575 MD 520 TD	520 MD 470 TD	590 MD 550 TD
TENSILE ELONGATION AT BREAK % (SCRIM BREAK)	ASTM D 7003	32 MD 32 TD	35 MD 35 TD	32 MD 32 TD	35 MD 35 TD	32 MD 32 TD	35 MD 35 TD
TONGUE TEAR STRENGTH - LBF	ASTM D 5884	185 MD 160 TD	195 MD 185 TD	160 MD 120 TD	180 MD 140 TD	140 MD 120 TD	175 MD 145 TD
GRAB TENSILE - LBF (SCRIM BREAK)	ASTM D 7004	260 MD 245 TD	270 MD 255 TD	280 MD 270 TD	300 MD 290 TD	260 MD 245 TD	270 MD 255 TD
GRAB TENSILE ELONGATION AT BREAK % (SCRIM BREAK)	ASTM D 7004	25	32	25	32	25	32
HIGH PRESSURE OIT (HPOIT)	ASTM D 5885	1000 min	2400 min	1000 min	2400 min	1000 min	2400 min
PUNCTURE RESISTANCE - LBF	ASTM D 4833	85	100	110	120	120	133
MAXIMUM USE TEMPERATURE		180° F		180° F		180° F	
MINIMUM USE TEMPERATURE		-70° F		-70° F		-70° F	

*Raven modified QC procedure

PRO-FORMA Sheet Contents:

The data listed in this Pro-Forma data sheet is representative of initial production runs. These values may be revised at anytime without notice as additional test data becomes available.



DURA-SKRIM® K30B, K36B and K45B are linear low density polyethylene geomembranes reinforced with a heavy dense scrim reinforcement. In addition to excellent dimensional stability the K-Series reinforcement provides unmatched tear and tensile strength. DURA-SKRIM® K-Series membranes are formulated with thermal and UV stabilizers to assure a long service life.

Note: To the best of our knowledge, unless otherwise stated, these are typical property values and are intended as guides only, not as specification limits. Chemical resistance, odor transmission, longevity as well as other performance criteria is not implied or given and actual testing must be performed for applicability in specific applications and/or conditions. RAVEN INDUSTRIES MAKES NO WARRANTIES AS TO THE FITNESS FOR A SPECIFIC USE OR MERCHANTABILITY OF PRODUCTS REFERRED TO, no guarantee of satisfactory results from reliance upon contained information or recommendations and disclaims all liability for resulting loss or damage.



Engineered Films Division

P.O. Box 5107
Sioux Falls, SD 57117-5107
Ph: (605) 335-0174 • Fx: (605) 331-0333

Limited Warranty available at www.RavenEFD.com

Toll Free: 800-635-3456
Email: efdsales@ravenind.com
www.ravenefd.com

9/11 EFD 1251



New Mexico Office of the State Engineer

Water Column/Average Depth to Water

(A CLW##### in the
POD suffix indicates the
POD has been replaced
& no longer serves a
water right file.)

(R=POD has
been replaced,
O=orphaned,
C=the file is
closed)

(quarters are 1=NW 2=NE 3=SW 4=SE)

(quarters are smallest to largest)

(NAD83 UTM in meters)

(In feet)

POD Number	POD Sub-Code	basin	County	Q 64	Q 16	Q 4	Sec	Tws	Rng	X	Y	Distance	Depth Well	Depth Water	Water Column
<u>SJ 02686</u>			SJ	3	4	2	32	24N	08W	257502	4017472*	2740	690	690	0
<u>SJ 00001</u>			SJ		4	1	12	23N	09W	253534	4014427*	3648	695	630	65
<u>SJ 03978 POD1</u>			SJ	1	2	1	22	23N	08W	259816	4011541*	4161	500	260	240
<u>SJ 01709</u>			SJ		1	1	27	23N	08W	259451	4009831*	5424	317	225	92
<u>SJ 00960</u>			SJ	3	3	3	36	24N	08W	262730	4016518*	5835			
<u>SJ 00960 S</u>			SJ	3	1	3	36	24N	08W	262744	4016920*	5982			
<u>SJ 00960 S-2</u>			SJ	3	2	3	36	24N	08W	263147	4016909*	6356			
<u>SJ 00960 S-3</u>			SJ	2	4	3	36	24N	08W	263336	4016707*	6470			
<u>SJ 00870</u>			SJ		2	3	36	24N	08W	263248	4017010*	6485	250		
<u>SJ 01304</u>			SJ			2	01	23N	08W	263823	4015987*	6768	100		
<u>SJ 01334</u>			SJ			2	01	23N	08W	263823	4015987*	6768	90	40	50
<u>SJ 01710</u>			SJ		1	3	25	23N	09W	252985	4009203*	6949	550	173	377
<u>SJ 01712</u>			SJ		2	4	27	24N	09W	251195	4018933*	7290	528	515	13
<u>SJ 01335</u>			RA			1	31	24N	07W	264672	4017581*	8019	185		
<u>SJ 01131</u>			RA		1	4	19	24N	07W	265313	4020131*	9760	1700	400	1300

Average Depth to Water: **366 feet**

Minimum Depth: **40 feet**

Maximum Depth: **690 feet**

Record Count: 15

UTMNAD83 Radius Search (in meters):

Easting (X): 257168

Northing (Y): 4014752

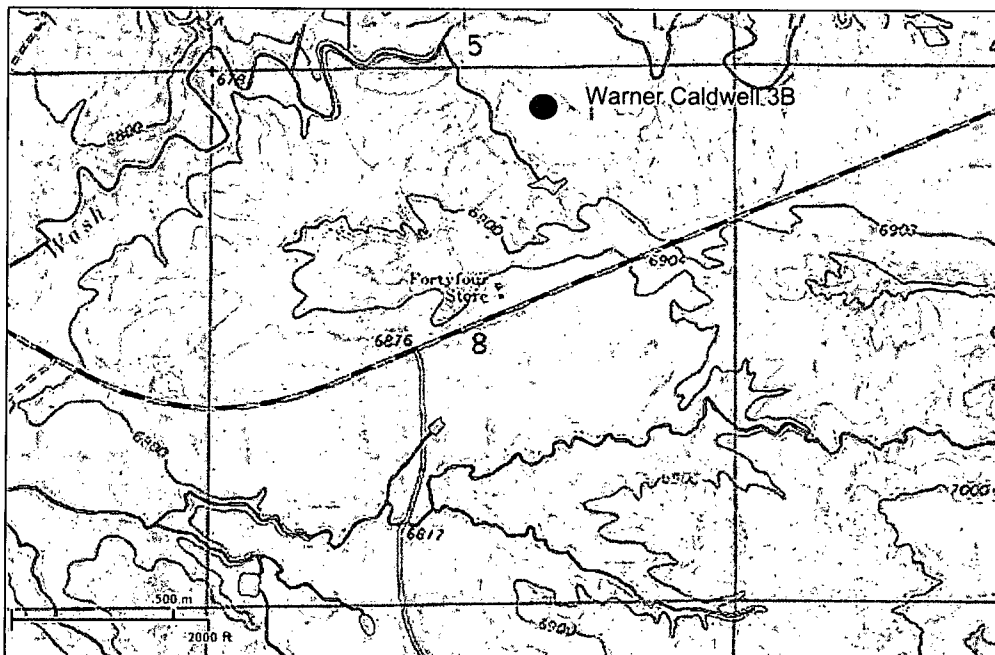
Radius: 10000

*UTM location was derived from PLSS - see Help

The data is furnished by the NMOSE/ISC and is accepted by the recipient with the expressed understanding that the OSE/ISC make no warranties, expressed or implied, concerning the accuracy, completeness, reliability, usability, or suitability for any particular purpose of the data.



Sep 11, 2013



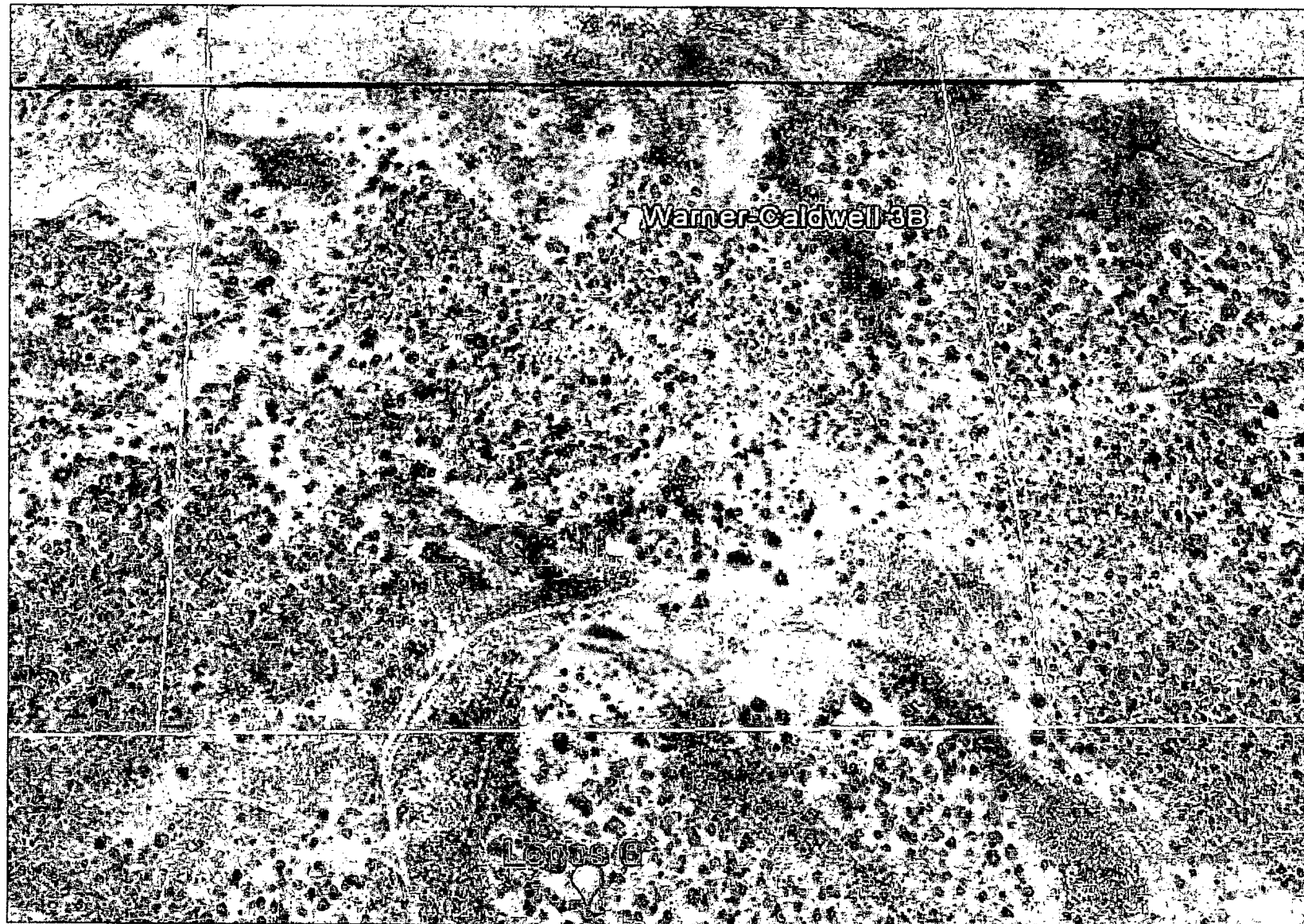
This map is for general reference only. The US Fish and Wildlife Service is not responsible for the accuracy or currentness of the base data shown on this map. All wetlands related data should be used in accordance with the layer metadata found on the Wetlands Mapper web site.

Unit Letter A, Section 8, Township 23N Range 8W

WARNER CALDWELL 3B – AERIAL MAP

T23N R06W

01/06/2014



MO-TE DRILLING, INC.

DAY Thur

DRILLER Zach M LEFT TOWN ARRIVED FIELD

HELPER Bob H. LEFT FIELD ARRIVED TOWN

HELPER Tom H. TOTAL FOOTAGE TODAY

RIG NO. 207 DATE 1-17-13 CLIENT B Logos Operating

BEGIN WORK ON HOLE NO. Logos #5 AT FEET

BEGIN WORK ON HOLE NO. Test hole G/4 AT FEET

TIME		ACTIVITY	30-045-35423
FROM	TO		
8 ⁴⁵	9 ³⁰	Drive to location	
9 ³⁰	10 ⁰⁰	Rig Up	
10 ⁰⁰	10 ¹⁵	Drill G/4 from 0' to 65'	
10 ¹⁵	11 ¹⁵	Trip out wait 1 hour test for water	
11 ¹⁵	11 ³⁰	Drill G/4 from 65' to 120'	
11 ³⁰	1 ⁰⁰	Trip out ^{ROUND} wait 1 hour test for water	
1 ⁰⁰	2 ¹⁵	back fill hole.	
		Drive back to yard	
		NO WATER	
		0-10' SAND	50-60' shale
		10'-20' SAND	60'-70' shale/clay
		20'-30' SAND/clay	70'-80' shale
		30'-40' clay	80'-90' clay
		40'-50' sandstone/clay	90'-100' clay
BIT RECORD			
SIZE & MAKE	SERIAL NO.	FOOTAGE	
			100'-110' sandstone/clay
			110'-120' sand clay mix
CIRCULATION MATERIAL			
QUAN.	UNIT	MATERIAL	
		Water	Level Meter
			100' 0"
			311' 72"
			72"
NO. OF LOADS OF WATER		SOURCE	Total 4686 72

Hydro geological report for Warner-Caldwell 3B

Referenced Well Location:

The Warner-Caldwell 3B is located on public lands managed by the BLM in San Juan County, New Mexico. The proposed development is situated south of Kimbeto Wash in rolling hillside terrain north of U.S. Highway 550. Elevation of the referenced well is 6867'.

General Regional Groundwater Description:

As a portion of the San Juan Basin, the FFO region is underlain by sandstone aquifers of the Colorado Plateau. The primary aquifer of potential concern at this location is the Uinta-Animas Aquifer, composed primarily of Lower Tertiary rocks in the San Juan Basin. The aquifer consists of the San Jose Formation; the underlying Animas formation and its lateral equivalent, the Nacimiento formation; and the Ojo Alamo Sandstone. The thickness of the Uinta-Animas aquifer generally increases toward the central part of the basin. In this region, the maximum thickness of the aquifer is approximately 3500 feet (USGS, 2001). This aquifer contains fresh to moderately saline water. Groundwater generally flows toward the San Juan River and its tributaries, where it becomes alluvial groundwater or is discharged to stream flow.

Site Specific Information:

Surface Hydrology: The BGT is located on gently rolling terrain with erosional drainages to the south and west of the proposed project area.

1st Water Bearing Formation: San Jose, Tertiary; Formation Thickness: Approximately 1,900 ft.

Underlying Formation: Nacimiento, Tertiary

Depth to Groundwater:

Depth to groundwater is estimated at greater than 25' below bottom of the BGT. A test water well drilled to 120' on the Logos 5, elevation 6867', found no water. The Warner-Caldwell 3B elevation is also 6867', so ground water depth is 120', therefore ground water depth to bottom of BGT is greater than 100'.

Siting Criteria

1. According to the iWaters Database from the State Engineers Office, the closest known water well SJ-02686 is 2740 meters (1.7 miles) away in Section 32 of T24N R8W. The depth of the well is 690 feet and water depth is 690'
2. As shown on the attached topographic map and aerial photos, there are no continuously flowing watercourses within 100' of the BGT, or any significant watercourses, lakebeds, sinkholes or playa lakes within 100' of the BGT.
3. There are no domestic water wells or springs within 200' of the BGT. See iWaters Database printout.



Logos Operating Below Grade Tank Design and Construction Plan

In accordance with NMAC 19.15.17, the following information describes the design and construction plan for below grade tanks (BGT) for Logos Operating, LLC (Logos). This is a standard design and construction plan for Logos.

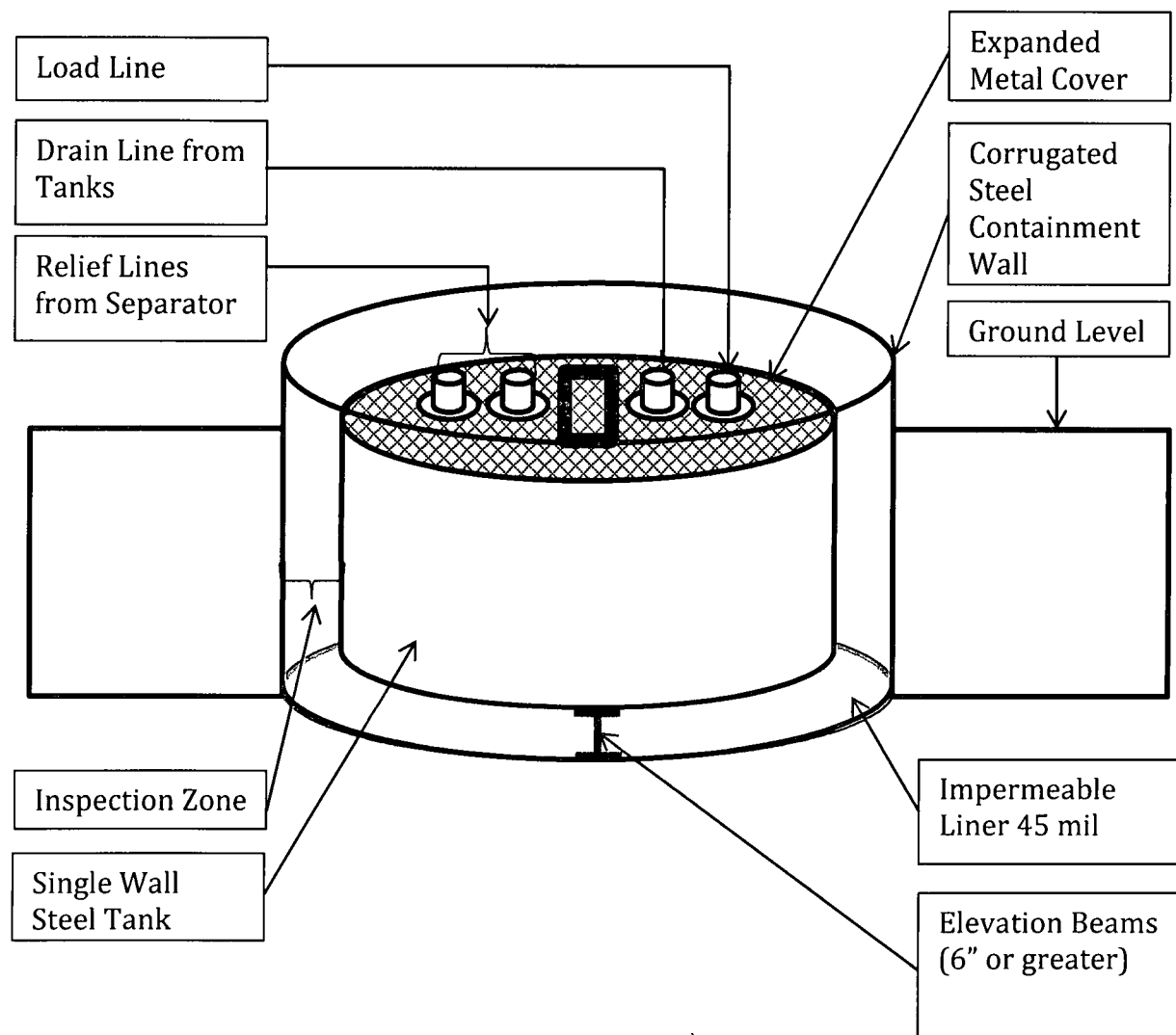
General Plan in Accordance with 19.15.17.11

1. Logos will design and construct a BGT to contain liquids and solids that is designed to prevent contamination of fresh water and protect public health and the environment.
2. The location of the BGT will be at a battery or well location which contains proper upright signs (in compliance with 19.15.17.11C).
3. The BGT will be contained within the operating berm and will be protected with 4' hog wire fencing with one strand of barbed wire on top to deter unauthorized access. A six foot chain link fence topped with two strands of barbed wire will be used if the BGT is within 1000 feet of permanent residence, school, hospital, institution or church. Logos ensures that all gates associated with the fence are closed and locked when responsible personnel are not onsite.
4. The BGT will have an expanded metal cover.
5. The BGT will be constructed out of steel which is resistant to the particular contents and resistant to damage from sunlight. The pit will be painted to minimize rust and corrosion.
6. The foundation will be level, free of rocks, debris, sharp edges or irregularities to prevent punctures, cracks, indentations of the liner or tank bottom.
7. The BGT will be designed and constructed to prevent surface water run-on from entering the tank. The corrugated steel wall surrounding the pit will be above grade and will prevent water from running into the BGT.
8. The BGT will have a single wall that is capable of being inspected. The BGT will have a corrugated steel wall barrier that prevents the ground from collapsing around the BGT and allows for the BGT to be thoroughly inspected by providing a direct sight line to the BGT bottom and to the BGT impermeable liner.
9. The BGT will be set on beams, six inches or greater, on the liner in a way that will protect the bottom of the BGT from sharp objects.
10. The BGT system is designed to be used as a drain tank only under manual and supervised operations. The BGT's are located at batteries that have primary water tanks so that the BGT is not used as a primary water pit, it is only used as a drain pit for primary tanks. Any fluid drained from the separators will be drained into the BGT manually and under constant supervision to ensure that the tank is not overflowed. Fluid will not be continuously pumped into the BGT, therefore, this design is based on

19.15.17.11.1.4.c. This design and operation is expected to offer equal or better protection to the environment because all operations that utilize the BGT are conducted manually and are supervised versus an automated system that can fail without onsite supervision to address the failure.

11. An impermeable liner will be installed below the BGT so that any leak in the BGT will flow to a visible point on top of the impermeable liner. The geomembrane liner consists of a 45-mil flexible LLDPE material manufactured by Raven Industries as K45B. This product is four layer reinforced laminated containing no adhesives. The outer layers consist of a high strength polyethylene film manufactured using virgin grade resins and stabilizers for UV resistance in exposed applications. K45B is reinforced with 1300 denier polyester bi-directional scrim reinforcement. It exceeds ASTM D3083 standard by 10%. It is typically used in Brine Pond, Oilfield Pit liner and other industrial applications. The manufacture spec sheet is attached.

**Logos Operating
Below Grade Tank Design**





Logos Operating Below Grade Tank Operation and Maintenance Plan

In accordance with NMAC 19.15.17, the following information describes the operation and maintenance plan for below grade tanks (BGT) for Logos Operating, LLC (Logos). This is a standard procedure for Logos.

General Plan in Accordance with 19.15.17.12

1. Logos will operate and maintain the BGT to contain liquids and solids while maintaining the integrity of the liner, BGT, and corrugated steel wall. The operation and maintenance are plan are designed to prevent contamination of fresh water and protect public health and safety.
2. Logos will not store or discharge hazardous waste into the BGT.
3. If the BGT develops a leak, Logos will remove all of the fluids from the BGT within 48 hours and notify the appropriate division office pursuant to 19.15.29 NMAC. Logos will immediately take the BGT out of service until it is properly repaired or replaced.
4. The BGT will be operated and designed to prevent the collection of surface water run-on.
5. The BGT will be bounded by a corrugated steel wall which will contain an unanticipated release. The BGT and corrugated steel wall are also located inside of the berm which will act as a secondary containment barrier in the event of an unanticipated release.
6. Logos will not allow the BGT to overflow or collect surface water run on. Overflow will be prevented by operating the BGT manually which requires complete supervision during draining operations to the BGT. Operators will manually open and shut off the lines that fill the BGT during draining operations. Surface water run-on is prevented by having a corrugated steel ring that is above ground level which will prevent water run-on from entering the BGT as well as a radial space that keeps the BGT walls away from the ground level which will also prevent water-run on from entering and overflowing the BGT.
7. Logos will remove any measurable layer of oil from the BGT.
8. The BGT will be inspected for leak and damage at least monthly and the integrity will be documented annually with records maintained for at least 5 years.
9. The BGT will be operated with adequate freeboard to prevent overflow of the BGT.
10. The BGT sidewalls will be kept free of anything that could not allow for inspection of liner and sidewalls.



Logos Operating Below Grade Tank Closure Plan

In accordance with NMAC 19.15.17.13, the following information describes the closure plan for below grade tanks (BGT) for Logos Operating, LLC (Logos).

General Plan in Accordance with 19.15.17.13

1. Logos will obtain approval of a closure plan prior to commencing closure operations.
2. Logos will notify the surface owner by certified mail, return receipt requested, unless surface owner is a public entity (BLM/State/Tribal) then an email notification will be sent, of plans to close the BGT at least 72 hours, but no more than 1 week, prior to any closure operation. The notice will include the well name, API number, and location.
3. Logos will notify the appropriate district office verbally and in writing with at least 72 hours of notice but no more than 1 week. The notice will include well name and API number as well as the location containing unit letter, section, township, and range.
4. Logos will remove liquids and sludge from the BGT within 60 days of cessation of operations and dispose of those at a division approved facility.
5. Within 6 months of cessation of operations, Logos will dispose, reuse/recycle or reclaim in a division approved manner the BGT, and all unused equipment associated with the BGT.
6. The soils beneath the BGT will be tested as follows:
 - a. A five point composite sample including any obvious staining or wet soils shall be taken under BGT and will be analyzed for constituents listed in Table I (see page 2) of 19.15.17.13 NMAC.
 - b. Based on the results of the soil test, Logos will obtain NMOCD District approval prior to completing any necessary additional delineation for closure. If the soil tests are at or below the standards of closure, Logos will proceed with closure.
7. Upon closing of the BGT, Logos will reclaim the unused BGT location to a safe and stable condition that blends with the surrounding undisturbed area as provided in Paragraph 2 of subsection H of 19.15.17.13 as well as recontouring the area in accordance with paragraph 5 in subsection H of 19.15.17.13 NMAC. The soil cover will be constructed to prevent ponding of water and erosion of the cover material.
8. The reclamation of the BGT area will contain a uniform vegetative cover that reflects a life-form ratio of plus or minus fifty (50%) of pre-disturbance levels and a total percent plant cover of at least seventy (70%) of pre-disturbance levels, excluding noxious weeds. The re-vegetation and reclamation obligations imposed by other

applicable federal or tribal agencies that manage the lands will supersede these provisions and govern the obligations.

9. Logos will notify the division when reclamation and re-vegetation is complete.
10. Logos will submit a closure report on form C-144 within 60 days of closure completion. The closure report will contain back filling details, capping and covering where applicable, all necessary attachments, certification that all information contained in the report is correct and that the operator has complied with all applicable closure requirements to the best of its knowledge.

Components	Tests Method	Limit (mg/Kg)
		≤50' bottom of BGT to GW
Benzene	EPA SW-846 8021B or 8015M	10
BTEX	EPA SW-846 8021B or 8260B	50
TPH	EPA SW-846 418.1	100
Chlorides	EPA 300.0	600
GRO/DRO	EPA SW-846 80165M	n/a
		51'-100' bottom of BGT to GW
Benzene	EPA SW-846 8021B or 8015M	10
BTEX	EPA SW-846 8021B or 8260B	50
TPH	EPA SW-846 418.1	2500
Chlorides	EPA 300.0	10,000
GRO/DRO	EPA SW-846 80165M	1000
		>100' bottom of BGT to GW
Benzene	EPA SW-846 8021B or 8015M	10
BTEX	EPA SW-846 8021B or 8260B	50
TPH	EPA SW-846 418.1	2500
Chlorides	EPA 300.0	20,000
GRO/DRO	EPA SW-846 80165M	1000

State of New Mexico
Energy, Minerals and Natural Resources Department

Susana Martinez
Governor

David Martin
Cabinet Secretary

Brett F. Woods, Ph.D.
Deputy Cabinet Secretary

Jami Bailey, Division Director
Oil Conservation Division



New Mexico Oil Conservation Division approval and conditions
listed below are made in accordance with OCD Rule 19.15.7.11
and are in addition to the actions approved by BLM on the
following 3160-4 or 3160-5 form.

Operator Signature Date:

Application Type:

☐ P&A ☐ Drilling/Casing Change ☐ Recomplete/DHC
☐ Location Change ☒ Other:

Well information:

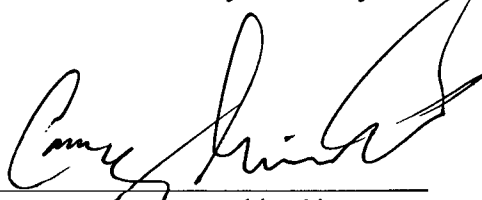
API-Well #	Well Name	Well #	Operator Name	Type	Stat	County	Surf. Owner	UL	Sec	Twp	N/S	Rng	W/E
30-045-35506-00-00	WARNER CALDWELL	003B	LOGOS OPERATING, LLC	O	N	San Juan	F	B	8	23	N	8	W

Conditions of Approval:

Tamera,

I have approved the alternate design for the Logos BGT Registrations.

Please be advised, if it is found that Logos' variance request to the high level shut off device does not provide equal or better protection of fresh water, public health and the environment; Logos may be required to install Automatic High level shut off devices on all BGT's that follow this design plan. The OCD will use inspections and overflow events to make any necessary determinations.



NMOCD Approved by Signature

7/25/14
Date