

UNITED STATES
DEPARTMENT OF THE INTERIOR
BUREAU OF LAND MANAGEMENT

FORM APPROVED
OMB No. 1004-0137
Expires: July 31, 2010

SEP 10 2014

5. Lease Serial No. SF-079521A

6. If Indian, Allottee or Tribe Name

SUNDRY NOTICES AND REPORTS ON WELLS
Do not use this form for proposals to drill or to re-enter an abandoned well. Use Form 3160-3 (APD) for such proposals.

SUBMIT IN TRIPLICATE - Other instructions on page 2.

1. Type of Well

☐ Oil Well ☒ Gas Well ☐ Other

7. If Unit of CA/Agreement, Name and/or No.

San Juan 28-5 Unit

8. Well Name and No.

San Juan 28-5 Unit 95

2. Name of Operator

Burlington Resources Oil & Gas Company LP

9. API Well No.

30-039-20878

3a. Address

PO Box 4289, Farmington, NM 87499

3b. Phone No. (include area code)

(505) 326-9700

10. Field and Pool or Exploratory Area

Tapacito PC

4. Location of Well (Footage, Sec., T., R., M., or Survey Description)

Surface UNIT M (SWSW), 1170' FSL & 880' FWL, Sec. 31, T28N, R5W

11. Country or Parish, State

Rio Arriba New Mexico

12. CHECK THE APPROPRIATE BOX(ES) TO INDICATE NATURE OF NOTICE, REPORT OR OTHER DATA

TYPE OF SUBMISSION

☒ Notice of Intent

☐ Subsequent Report

☐ Final Abandonment Notice

TYPE OF ACTION

☐ Acidize

☐ Alter Casing

☐ Casing Repair

☐ Change Plans

☐ Convert to Injection

☐ Deepen

☐ Fracture Treat

☐ New Construction

☒ Plug and Abandon

☐ Plug Back

☐ Production (Start/Resume)

☐ Reclamation

☐ Recomplete

☐ Temporarily Abandon

☐ Water Disposal

☐ Water Shut-Off

☐ Well Integrity

☐ Other

13. Describe Proposed or Completed Operation: Clearly state all pertinent details, including estimated starting date of any proposed work and approximate duration thereof. If the proposal is to deepen directionally or recompleat horizontally, give subsurface locations and measured and true vertical depths of all pertinent markers and zones. Attach the bond under which the work will be performed or provide the Bond No. on file with BLM/BIA. Required subsequent reports must be filed within 30 days following completion of the involved operations. If the operation results in a multiple completion or recompleat in a new interval, a Form 3160-4 must be filed once Testing has been completed. Final Abandonment Notices must be filed only after all requirements, including reclamation, have been completed and the operator has determined that the site is ready for final inspection.)

Burlington Resources requests permission to P&A the subject well per the attached procedure, current and proposed wellbore schematics. The Pre-Disturbance Site Visit was held on 9/9/14 w/Bob Switzer, BLM Representative. The Re-Vegetation Plan is attached. A Closed Loop System will be utilized for this project.

**Notify NMOCD 24 hrs
prior to beginning
operations**

BLM'S APPROVAL OR ACCEPTANCE OF THIS ACTION DOES NOT RELIEVE THE LESSEE AND OPERATOR FROM OBTAINING ANY OTHER AUTHORIZATION REQUIRED FOR OPERATIONS ON FEDERAL AND INDIAN LANDS

**SEE ATTACHED FOR
CONDITIONS OF APPROVAL**

14. I hereby certify that the foregoing is true and correct. Name (Printed/Typed)

Denise Journey

Title Staff Regulatory Technician

Signature

Denise Journey

Date

9/10/2014

THIS SPACE FOR FEDERAL OR STATE OFFICE USE

Approved by

Troy Salvors

Title

Petroleum Eng.

Date

9/10/2014

Conditions of approval, if any, are attached. Approval of this notice does not warrant or certify that the applicant holds legal or equitable title to those rights in the subject lease which would entitle the applicant to conduct operations thereon.

Office

FFO

Title 18 U.S.C. Section 1001 and Title 43 U.S.C. Section 1212, make it a crime for any person knowingly and willfully to make to any department or agency of the United States any false, fictitious or fraudulent statements or representations as to any matter within its jurisdiction.

(Instruction on page 2)

**OPERATOR
NMOCD PV**

*Ac
5*

ConocoPhillips
SAN JUAN 28-5 UNIT 95
Expense - P&A

Lat 36° 36' 49.14" N

Long 107° 24' 21.348" W

PROCEDURE

This project requires the use of an A-Plus steel tank to handle waste fluids circulated from the well and cement wash up.

1. Hold pre-job safety meeting. Comply with all NMOCD, BLM, and COPC safety and environmental regulations. Test rig anchors prior to moving in rig.
2. MIRU workover rig. Check casing, tubing, and bradenhead pressures and record them in Wellview. If there is pressure on the BH, contact the Wells Engineer.
3. Remove existing piping on casing valve. RU blow lines from casing valves and begin blowing down casing pressure. Kill well as necessary. Ensure well is dead or on a vacuum.
4. ND wellhead and NU BOPE. Pressure and function test BOP to 250 psi low and 1000 psi over SICP high to a maximum of 2000 psi held and charted for 10 minutes as per COP Well Control Manual.
5. PU 2-3/8" bit and watermelon mill and 1-1/4" tubing and round trip as deep as possible above top perforation at 3162'.
6. Rig up wireline, pick up 2-7/8" CR and set 3112'. Pull out with wireline. Trip in with tubing and sting into retainer. Pressure test tubing to 1000 psi. Sting out of CR. Load hole, and pressure test casing to 800 psi. *If casing does not test, then spot or tag subsequent plugs as appropriate.* POOH w/ tubing.
7. RU wireline and run CBL with 500 psi on casing from CR to surface to identify TOC. *Adjust plugs as necessary for new TOC.*

All cement volumes use 100% excess outside pipe and 50' excess inside pipe. The stabilizing wellbore fluid will be 8.3 ppg, sufficient to balance all exposed formation pressures. All cement will be ASTM Class B mixed at 15.6 ppg with a 1.18 cf/sk yield.

8. Plug 1 (Pictured Cliffs Perforations, Pictured Cliffs, Fruitland, and Kirtland Formation Tops, 2660-3112', 17 Sacks Class B Cement) Trip in with tubing open ended. Mix cement as described above and spot an inside plug to isolate the Pictured Cliffs perforations as well as the Formation tops for the Pictured Cliffs, Fruitland, and Kirtland formations. Pull up hole.

9. Plug 2 (Ojo Alamo Formation Top, 2398-2498', 5 Sacks Class B Cement)

Mix cement as described above and spot a balanced plug inside casing to isolate the Ojo Alamo formation top. Pull out of hole.

See COA

10. Plug 3 (Nacimiento Formation Top, 1181-1261', 55 Sacks Class B Cement)

Rig up wireline. Perforate 3 squeeze holes at 1261'. Wireline set 2-7/8" cement retainer at 1211'. Pull out with wireline. Trip in hole with tubing, sting into retainer and squeeze 50 sacks under retainer. Sting out and spot 5 sacks on top of cement retainer. Pull out of hole.

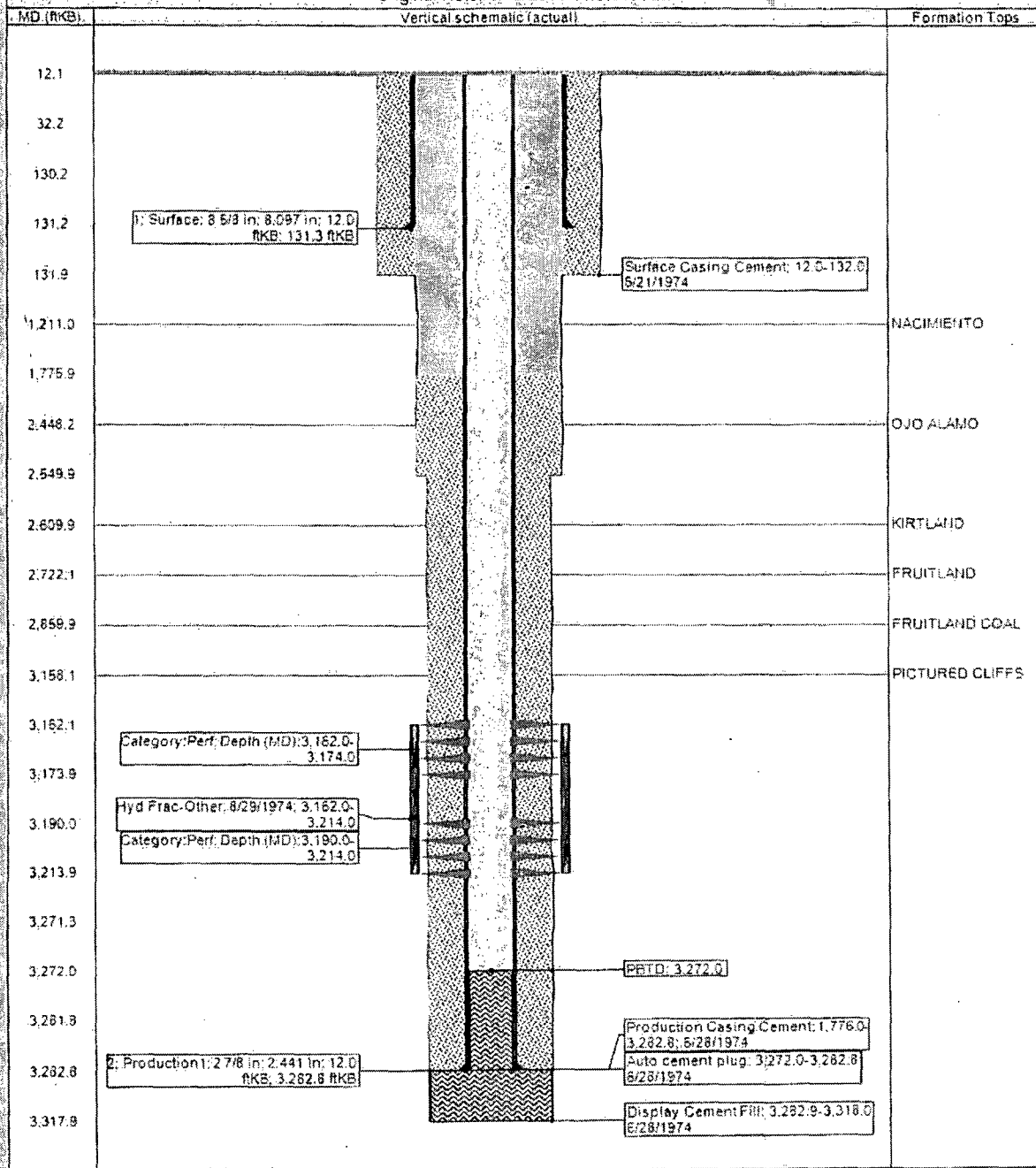
11. Plug 4 (Surface Casing Shoe and Surface Plug, 12-181', 80 Sacks Class B Cement)

Perforate 4 big hole charge (if available) squeeze holes at 181'. TOOH. Observe well for 30 minutes per BLM regulations. RU pump, close blind rams and establish circulation out bradenhead with water. Circulate BH clean. Wireline set 2-7/8" CR at 131'. Trip in and sting into retainer. Mix 75 sacks Class B cement and squeeze until good cement returns to surface out BH valve. Shut BH valve and squeeze to max 200 psi. Sting out of CR and reverse circulate cement out of tubing. TOOH and LD stinger. TIH with open ended tubing to 131'. Mix 5 sacks Class B cement and pump inside plug. TOOH and LD Tubing. SI well and WOC.

12. Nipple down BOP and cut off casing below the casing flange. Install P&A marker with cement to comply with regulations. Rig down, move off location, cut off anchors, and restore location.

District	Field Name	API / UWI	County	State/Province
Original Spud Date	Surface Legal Location	E/W Dist (ft)	E/W Ref	N/S Dist (ft)

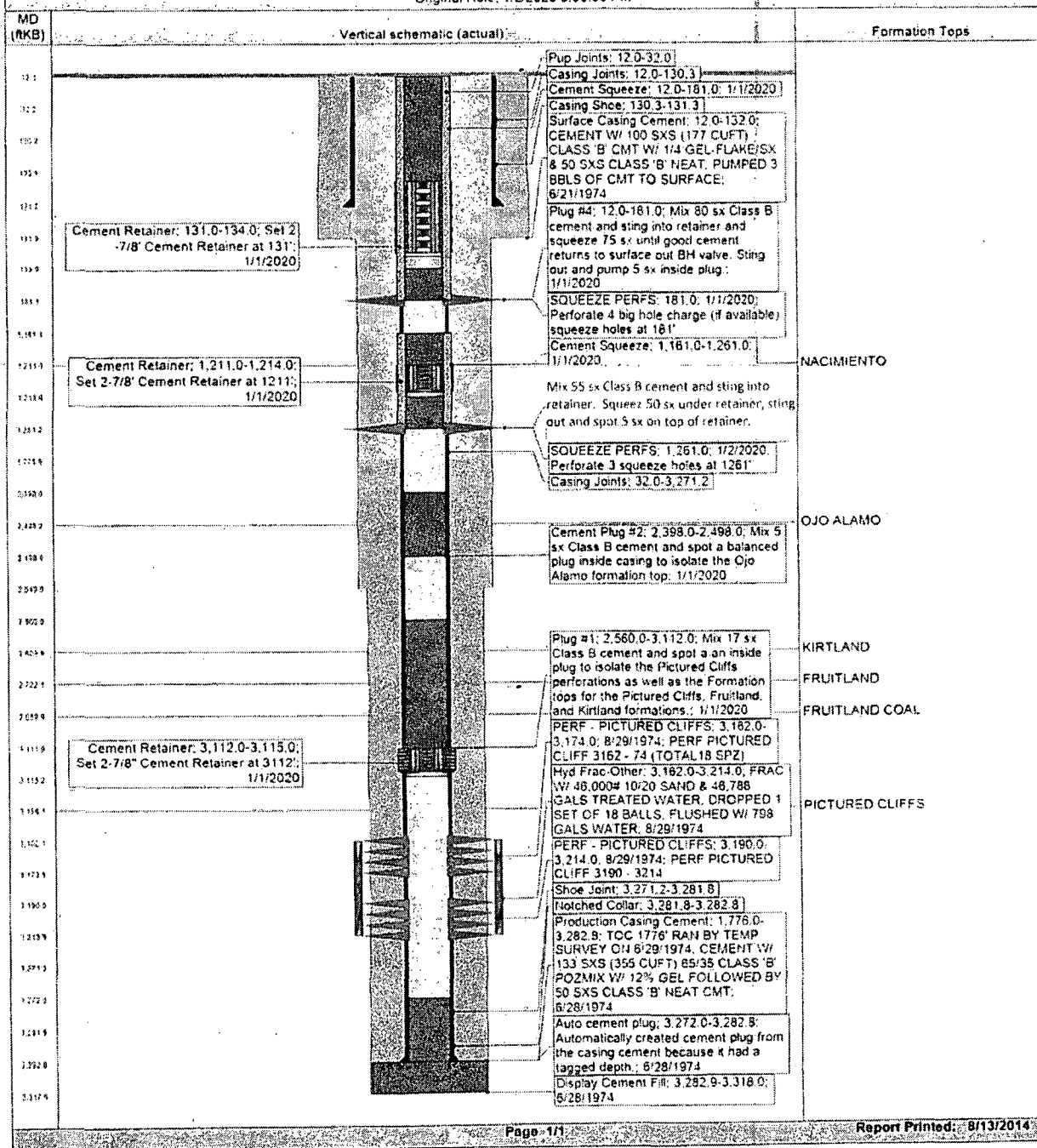
Original Hole: 8/13/2014 11:07:49 AM





District SOUTH	Field Name TAPACITO (PICTURED CLIFFS)	API / UWI 3003920878	County RIO ARRIBA	State/Province NEW MEXICO	
Original Spud Date 6/21/1974	Surface Legal Location 031-028N-005W-M	East/West Distance (ft) 880.00 FWL	East/West Reference	North/South Distance (ft) 1,170.00 FSL	North/South Reference

Original Hole, 1/2/2020 9:00:00 PM



UNITED STATES DEPARTMENT OF THE INTERIOR
BUREAU OF LAND MANAGEMENT
FARMINGTON DISTRICT OFFICE
6251 COLLEGE BLVD.
FARMINGTON, NEW MEXICO 87402

Attachment to notice of
Intention to Abandon:

Re: Permanent Abandonment
Well: San Juan 28-5 Unit #95

CONDITIONS OF APPROVAL

1. Plugging operations authorized are subject to the attached "General Requirements for Permanent Abandonment of Wells on Federal and Indian Lease."
2. Farmington Office is to be notified at least 24 hours before the plugging operations commence (505) 564-7750.
3. The following modifications to your plugging program are to be made:
 - a) Bring the top of plug #3 to 1080 ft. inside/outside to cover the Nacimiento top. Adjust cement volume accordingly.

Operator will run a CBL to verify cement top. Submit electronic copy of the log for verification to the following addresses: tsalyers@blm.gov Brandon.Powell@state.nm.us

You are also required to place cement excesses per 4.2 and 4.4 of the attached General Requirements.

Office Hours: 7:45 a.m. to 4:30 p.m.