

District II
811 S. First Street, Artesia, NM 88210
Phone: (575) 748-1283 Fax: (575) 748-9720

District III
1000 Rio Brazos Road, Aztec, NM 87410
Phone: (505) 334-6178 Fax: (505) 334-6170

District IV
1220 S. St. Francis Drive, Santa Fe, NM 87505
Phone: (505) 476-3460 Fax: (505) 476-3462

OIL CONSERVATION DIVISION

1220 South St. Francis Drive
Santa Fe, NM 87505

Submit one copy to
Appropriate District Office

☒ AMENDED REPORT

WELL LOCATION AND ACREAGE DEDICATION PLAT

*API Number 30.045-35587	*Pool Code 97232	*Pool Name BASIN MANCOS
*Property Code 40275	*Property Name CHACO 230B-04P	*Well Number 406H
*GRID No. 120782	*Operator Name WPX ENERGY PRODUCTION, LLC	*Elevation 6876'

¹⁰ Surface Location

UL or lot no.	Section	Township	Range	Lot Idn	Feet from the	North/South line	Feet from the	East/West line	County
P	4	23N	8W		1323	SOUTH	208	EAST	San Juan

¹¹ Bottom Hole Location If Different From Surface

UL or lot no.	Section	Township	Range	Lot Idn	Feet from the	North/South line	Feet from the	East/West line	County
M	4	23N	8W		1063	SOUTH	230	WEST	San Juan

¹² Dedicated Acres	320.0 Acres - S/2	¹³ Joint or Infill	¹⁴ Consolidation Code	¹⁵ Order No.	RCVD SEP 15 '14 OIL CONS DILL
-------------------------------	-------------------	-------------------------------	----------------------------------	-------------------------	----------------------------------

RCVD SEP 15 '14
DUI CONS. BILL

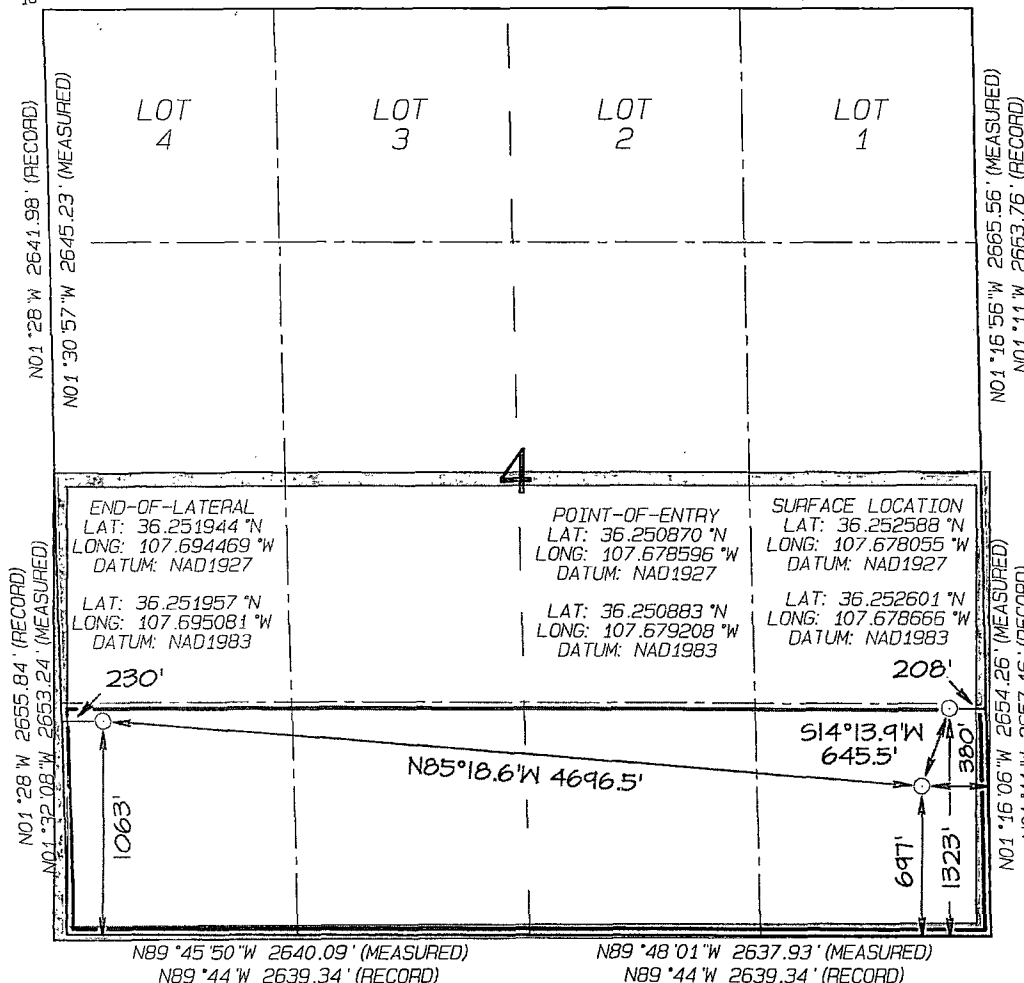
NO ALLOWABLE WILL BE ASSIGNED TO THIS COMPLETION UNTIL ALL INTERESTS HAVE BEEN CONSOLIDATED
OR A NON-STANDARD UNIT HAS BEEN APPROVED BY THE DIVISION

DIST. 3

N89°57'W 2651.55' (RECORD)
S89°58'50"W 2651.25' (MEASURED)

N89°57'W 2651.55' (RECORD)
S89°58'48"W 2649.42' (MEASURED)

16



17 OPERATOR CERTIFICATION

I hereby certify that the information contained herein is true and complete to the best of my knowledge and belief, and that this organization either owns a working interest or unleased mineral interest in the land including the proposed bottom-hole location or has a right to drill this well at this location pursuant to a contract with an owner of such a mineral working interest, or a voluntary pooling agreement or a compulsory pooling order heretofore entered by the Division.

Signature: Neatherly Date: 9/15/14

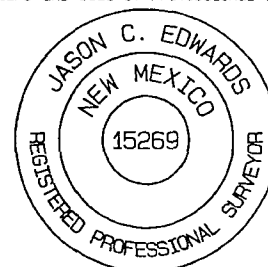
Printed Name
heather.riley@wpenergy.
E-mail Address

¹⁸ SURVEYOR CERTIFICATION

I hereby certify that the well location shown on this plat was plotted from field notes of actual surveys made by me or under my supervision, and that the same is true and correct to the best of my belief.

Date Revised: AUGUST 26, 2014
Survey Date: AUGUST 15, 2014

Signature and Seal of Professional Surveyor



JASON C. EDWARDS

Certificate Number 15269