

District I  
1625 N. French Dr., Hobbs, NM 88240  
District II  
811 S. First St., Artesia, NM 88210  
District III  
1000 Rio Brazos Road, Aztec, NM 87410  
District IV  
1220 S. St. Francis Dr., Santa Fe, NM 87505

State of New Mexico  
Energy Minerals and Natural Resources

Oil Conservation Division  
1220 South St. Francis Dr.  
Santa Fe, NM 87505

Form C-141  
Revised August 8, 2011

Submit 1 Copy to appropriate District Office in  
accordance with 19.15.29 NMAC.

**Release Notification and Corrective Action**

**OPERATOR**

☐ Initial Report ☒ Final Report

Name of Company: <b>ConocoPhillips Company</b>	Contact <b>Lisa Hunter</b>	
Address <b>3401 E. 30<sup>th</sup> Street, Farmington, NM 87402</b>	Telephone No. <b>505-326-9786</b>	
Facility Name <b>Jicarilla 20 #9</b>	Facility Type <b>Oil Well</b>	
Surface Owner <b>Jicarilla Tribe</b>	Mineral Owner <b>Jicarilla Tribe</b>	API No. <b>300-39-22745</b> <b>Jicarilla Contract: 64</b>

**LOCATION OF RELEASE**

**RCVD SEP 19 '14**

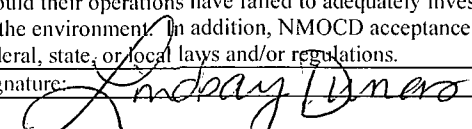
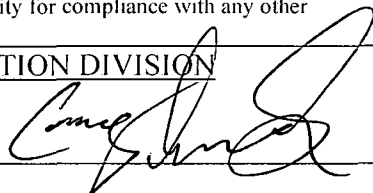
Unit Letter <b>D</b>	Section <b>20</b>	Township <b>25N</b>	Range <b>04W</b>	Feet from the <b>600'</b>	North/South Line <b>North</b>	Feet from the <b>430'</b>	East/West Line <b>West</b>	County <b>Rio Arriba</b>
-------------------------	----------------------	------------------------	---------------------	------------------------------	----------------------------------	------------------------------	-------------------------------	-----------------------------

Latitude 36.39069 Longitude -107.28222

**OIL CONS. DIV.**

**DIST. 3**

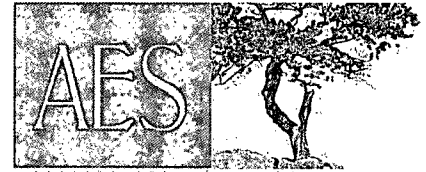
**NATURE OF RELEASE**

Type of Release <b>Produced Water</b>	Volume of Release <b>10 bbls</b>	Volume Recovered <b>2 bbls</b>
Source of Release <b>Pit Tank overflowed</b>	Date and Hour of Occurrence: <b>Unknown</b>	Date and Hour of Discovery <b>09-16-2013 @ 1:00 p.m.</b>
Was Immediate Notice Given? <input checked="" type="checkbox"/> Yes <input type="checkbox"/> No <input type="checkbox"/> Not Required	If YES, To Whom? <b>Bryce Hammond, Jicarilla EPA</b> <b>Brandon Powell, NMOCD</b>	
By Whom? <b>Lisa Hunter</b>	Date and Hour <b>09-17-13</b> <b>Bryce Hammond @ 8:43 a.m. by phone and email follow up</b> <b>Brandon Powell @ 8:50 a.m. - Courtesy Call</b>	
Was a Watercourse Reached? <input type="checkbox"/> Yes <input checked="" type="checkbox"/> No	If YES, Volume Impacting the Watercourse.	
If a Watercourse was Impacted, Describe Fully.*  <b>N/A</b>		
Describe Cause of Problem and Remedial Action Taken.* <b>Pit Tank overflowed causing a release of 10 bbls of Produced Water, of which 2 bbls were recovered. Fluids were contained. Well was shut in and water truck recovered free standing fluid. Third-part Environmental will assess impacted area for further remediation. ConocoPhillips will install level pit/tank shut downs will be installed and well will be more closely monitored.</b>		
Describe Area Affected and Cleanup Action Taken.* <b>Based on field screening results, no further actions are needed.</b>		
I hereby certify that the information given above is true and complete to the best of my knowledge and understand that pursuant to NMOCD rules and regulations all operators are required to report and/or file certain release notifications and perform corrective actions for releases which may endanger public health or the environment. The acceptance of a C-141 report by the NMOCD marked as "Final Report" does not relieve the operator of liability should their operations have failed to adequately investigate and remediate contamination that pose a threat to ground water, surface water, human health or the environment. In addition, NMOCD acceptance of a C-141 report does not relieve the operator of responsibility for compliance with any other federal, state, or local laws and/or regulations.		
Signature: 	<b>OIL CONSERVATION DIVISION</b>	
Printed Name: <b>Lindsay Dumas</b>	Approved by Environmental Specialist: 	
Title: <b>Field Environmental Specialist</b>	Approval Date: <b>9/25/14</b>	Expiration Date:
E-mail Address: <b>Lindsay.Dumas@cop.com</b>	Conditions of Approval:	Attached <input type="checkbox"/>
Date: <b>September 17, 201</b>	Phone: <b>505-599-4089</b>	

\* Attach Additional Sheets If Necessary

**#NCS 142683 6051**

**(9)**



Animas Environmental Services, LLC

[www.animasenvironmental.com](http://www.animasenvironmental.com)

624 E. Comanche  
Farmington, NM 87401  
505-564-2281

Durango, Colorado  
970-403-3084

December 11, 2013

Lindsay Dumas  
ConocoPhillips  
San Juan Business Unit  
Office 214-07  
5525 Hwy 64  
Farmington, New Mexico 87401

*Via electronic mail to:*  
[SJBUE-Team@ConocoPhillips.com](mailto:SJBUE-Team@ConocoPhillips.com)

**RE: Release Assessment Report  
Jicarilla 20 #9  
Rio Arriba County, New Mexico**

Dear Ms. Dumas:

On September 24, 2013, Animas Environmental Services, LLC (AES) completed a release assessment at the ConocoPhillips (CoP) Jicarilla 20 #9, located in Rio Arriba County, New Mexico. The release consisted of approximately 10 barrels (bbls) produced water, of which 2 bbls had been recovered.

---

## 1.0 Site Information

### 1.1 Location

Site Name – Jicarilla 20 #9

Legal Description – NW¼ NW¼, Section 20, T25N, R4W, Rio Arriba County, New Mexico

Well Head Latitude/Longitude – N36.39076 and W107.28279, respectively

Release Location Latitude/Longitude – N36.39092 and W107.28304, respectively

Land Jurisdiction – Jicarilla Apache Nation

Figure 1. Topographic Site Location Map

Figure 2. Aerial Site Map, September 2013

### 1.2 Risk Ranking

The Jicarilla 20 #9 is located on Jicarilla Apache Nation lands, and soil remediation action levels are determined by the Jicarilla Apache Nation Oil and Gas Administration (JANOGA). JANOGA action levels for soils follow the New Mexico Oil Conservation Division (NMOCD) *Guidelines for Remediation of Leaks, Spills, and Releases* (August

1993). Per JANOGA, all locations within Jicarilla Apache Nation lands receive a ranking score of 20:

- 100 ppm volatile organic compounds (VOCs); or 10 mg/kg benzene and 50 mg/kg total BTEX (benzene, toluene, ethylbenzene, and xylenes), and
- 100 mg/kg total petroleum hydrocarbons (TPH).

### 1.3 Assessment

AES was initially contacted by Lisa Hunter of CoP on September 19, 2013, and on September 24, 2013, Ross Kennemer and Deborah Watson of AES completed the release assessment field work. The assessment included collection and field screening of eight soil samples and two composite samples from four borings in and around the release area. Sample locations and the estimated release area are presented on Figure 3.

---

## 2.0 Soil Sampling

A total of eight soil samples (SB-1 through SB-4) and two composite samples (SC-1 and SC-2) were collected during the assessment. All soil samples were field screened for VOCs and were also analyzed for TPH. Composite samples SC-1 and SC-2 were field screened for chlorides.

### 2.1 Field Screening

#### 2.1.1 Volatile Organic Compounds

Field screening for VOC vapors was conducted with a photo-ionization detector (PID) organic vapor meter (OVM). Before beginning field screening, the PID-OVM was first calibrated with 100 parts per million (ppm) isobutylene gas.

#### 2.1.2 Total Petroleum Hydrocarbons

Field TPH samples were analyzed per USEPA Method 418.1 using a Buck Scientific Model HC-404 Total Hydrocarbon Analyzer Infrared Spectrometer (Buck). A 3-point calibration was completed prior to conducting soil analyses. Field analytical protocol followed AES's *Standard Operating Procedure: Field Analysis Total Petroleum Hydrocarbons per EPA Method 418.1*.

#### 2.1.3 Chlorides

Soil sample SC-1 was field screened for chlorides using Chloride Drop Count Titration with silver nitrate. Sampling and analysis methods followed procedures provided by Hach Company.

## 2.2 Field Screening Results

On September 24, 2013, initial assessment field screening results for VOCs via OVM showed concentrations measured 0.0 ppm for all samples. Field TPH concentrations ranged from 36.1 mg/kg in SB-1 to 68.1 mg/kg in SB-2. Results are included below in Table 1 and on Figure 3. The AES Field Screening Report is attached.

Table 1. Field Screening VOCs, TPH, and Chloride Results  
Jicarilla 20 #9 Initial Release Assessment  
September 2013

<i>Sample ID</i>	<i>Date Sampled</i>	<i>Sample Depth (ft bgs)</i>	<i>VOCs via OVM (ppm)</i>	<i>Field TPH (mg/kg)</i>	<i>Field Chlorides (mg/kg)</i>
		<i>JANOGA Action Level*</i>	<i>100</i>	<i>100</i>	<i>NE</i>
SB-1	9/24/13	0.5	0.0	36.1	NA
		2.0	0.0	61.4	NA
SB-2	9/24/13	0.5	0.0	60.1	NA
		2.0	0.0	68.1	NA
SB-3	9/24/13	0.5	0.0	52.1	NA
		2.0	0.0	61.4	NA
SB-4	9/24/13	0.5	0.0	41.4	NA
		2.0	0.0	64.1	NA
SC-1	9/24/13	0.5	NA	NA	80
SC-2	9/24/13	2.0	NA	NA	80

NA=Not Analyzed

\*Action level determined by JANOGA (Ref. NMOCD ranking score of 20 per NMOCD Guidelines for Remediation of Leaks, Spills, and Releases (August 1993)).

## 3.0 Conclusions and Recommendations

On September 24, 2013, AES conducted an initial assessment of impacted soils associated with a produced water release at the Jicarilla 20 #9. Action levels for releases are determined by JANOGA, which refers to the *NMOCD Guidelines for Remediation of Leaks, Spills, and Releases* (August 1993) for site rank of 20. Initial assessment field screening results were reported below the JANOGA action level of 100 ppm VOCs and 100 mg/kg TPH in each sample. Chloride concentrations were reported at 80 mg/kg in both SC-1 and SC-2.

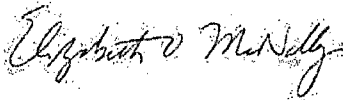
Based on field screening results for VOCs, TPH, and chlorides, no further work is recommended at the Jicarilla 20 #9.

If you have any questions about this report or site conditions, please do not hesitate to contact Deborah Watson at (505) 564-2281.

Sincerely,



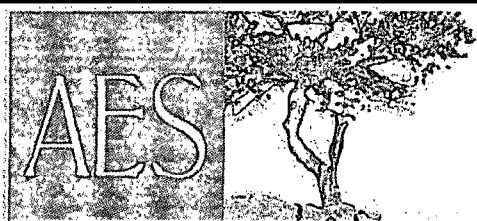
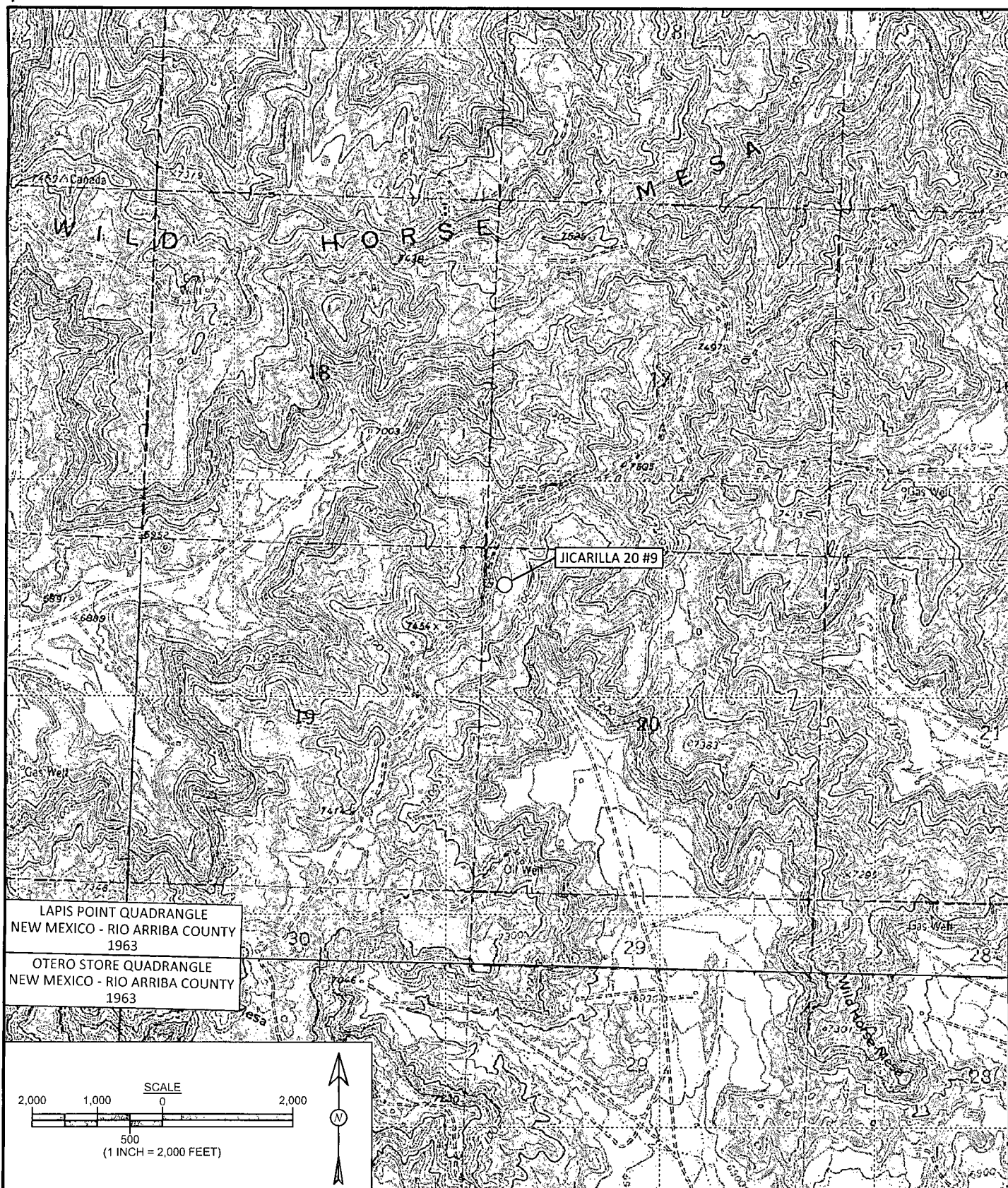
David Reese  
Environmental Scientist



Elizabeth McNally, PE

Attachments:

- Figure 1. Topographic Site Location Map
- Figure 2. Aerial Site Map, September 2013
- Figure 3. Assessment Sample Locations and Results, September 2013
- AES Field Screening Report 092413



Animas Environmental Services, LLC

<b>DRAWN BY:</b> C. Lameman	<b>DATE DRAWN:</b> September 26, 2013
<b>REVISIONS BY:</b> C. Lameman	<b>DATE REVISED:</b> September 26, 2013
<b>CHECKED BY:</b> D. Watson	<b>DATE CHECKED:</b> September 26, 2013
<b>APPROVED BY:</b> E. McNally	<b>DATE APPROVED:</b> September 26, 2013

**FIGURE 1**

**TOPOGRAPHIC SITE LOCATION MAP**

ConocoPhillips  
JICARILLA 20 #9  
NW¼ NW¼, SECTION 20, T25N, R4W  
RIO ARRIBA COUNTY, NEW MEXICO  
N36.39076, W107.28279

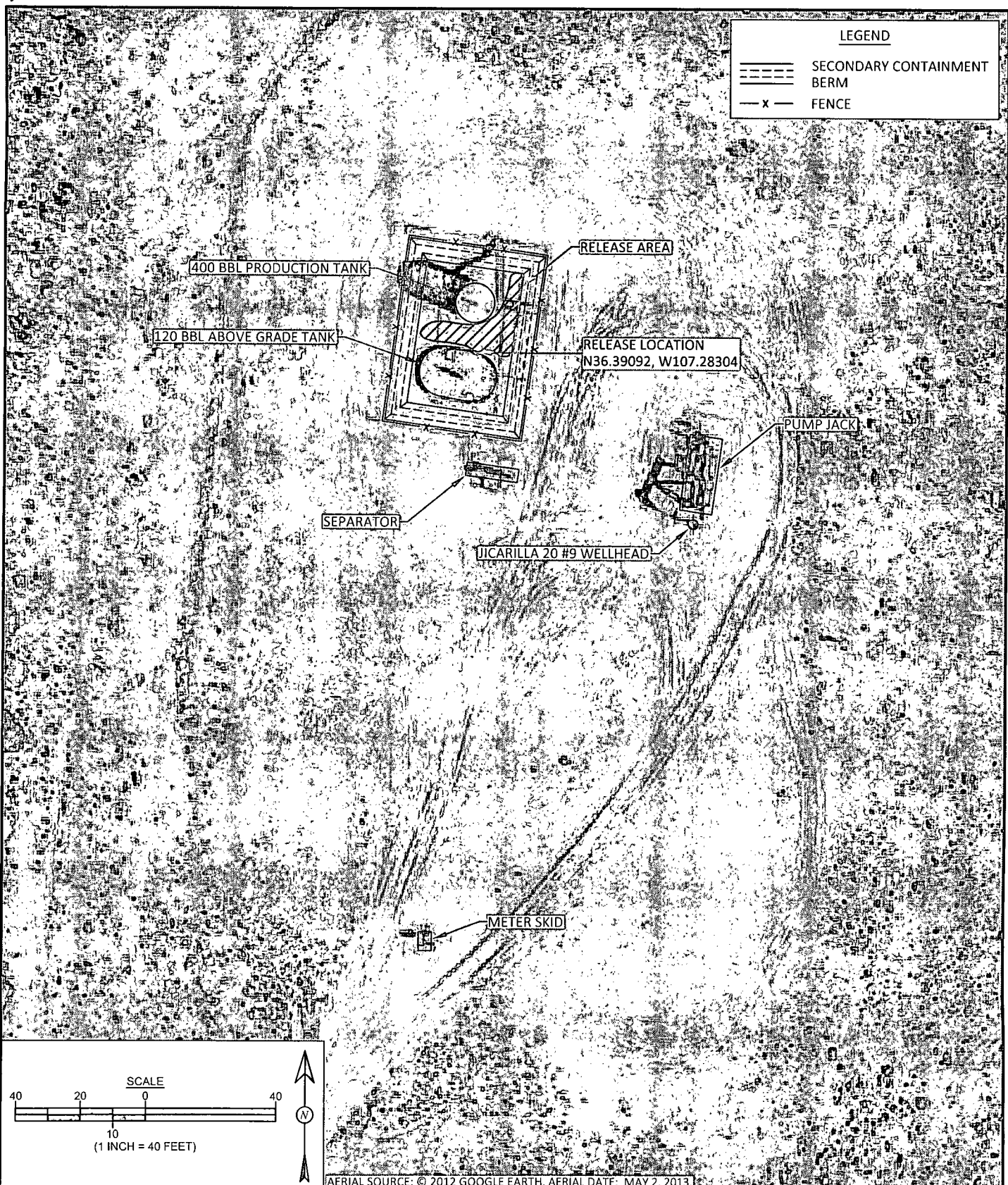
LEGEND

SECONDARY CONTAINMENT

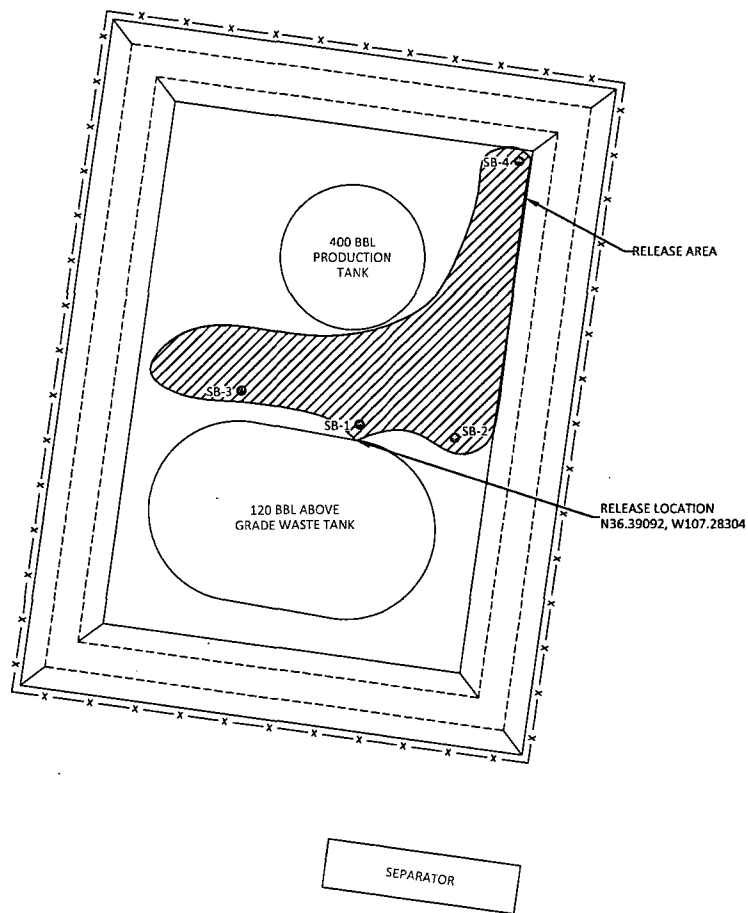
BERM

— x —

FENCE



<div> <div>AES</div> <div> </div> </div> <div>Animas Environmental Services, LLC</div>	<div>DRAWN BY:</div> <div>C. Lameman</div>	<div>DATE DRAWN:</div> <div>September 26, 2013</div>	<div>FIGURE 2</div> <div>AERIAL SITE MAP</div> <div>SEPTEMBER 2013</div> <div>ConocoPhillips</div> <div>JICARILLA 20 #9</div> <div>NW¼ NW¼, SECTION 20, T25N, R4W</div> <div>RIO ARriba COUNTY, NEW MEXICO</div> <div>N36.39076, W107.28279</div>
	<div>REVISIONS BY:</div> <div>C. Lameman</div>	<div>DATE REVISED:</div> <div>September 26, 2013</div>	
	<div>CHECKED BY:</div> <div>D. Watson</div>	<div>DATE CHECKED:</div> <div>September 26, 2013</div>	
	<div>APPROVED BY:</div> <div>E. McNally</div>	<div>DATE APPROVED:</div> <div>September 26, 2013</div>	



Field Screening Results					
Sample ID	Date	Depth (ft)	OVM-PID (ppm)	TPH (mg/kg)	Chlorides (mg/kg)
JANOGA ACTION LEVEL			100	100	NE
SB-1	9/24/13	0.5	0.0	36.1	NA
		2	0.0	61.4	NA
SB-2	9/24/13	0.5	0.0	60.1	NA
		2	0.0	68.1	NA
SB-3	9/24/13	0.5	0.0	52.1	NA
		2	0.0	61.4	NA
SB-4	9/24/13	0.5	0.0	41.4	NA
		2	0.0	64.1	NA
SC-1	9/24/13	0.5	NA	NA	80
SC-2	9/24/13	2	NA	NA	80

SC-1 AND SC-2 ARE COMPOSITE SAMPLES OF S-1 THROUGH S-4.  
NA - NOT ANALYZED

**FIGURE 3**

**ASSESSMENT SAMPLE LOCATIONS AND RESULTS SEPTEMBER 2013**  
 ConocoPhillips  
 JICARILLA 20 #9  
 NW¼ NW¼, SECTION 20, T25N, R4W  
 RIO ARriba COUNTY, NEW MEXICO  
 N36.39076, W107.28279

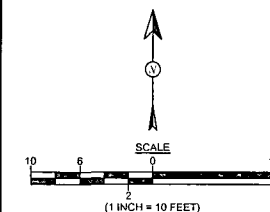


Animas Environmental Services, LLC

<b>DRAWN BY:</b> C. Lameman	<b>DATE DRAWN:</b> September 26, 2013
<b>REVISIONS BY:</b> C. Lameman	<b>DATE REVISED:</b> September 26, 2013
<b>CHECKED BY:</b> D. Watson	<b>DATE CHECKED:</b> September 26, 2013
<b>APPROVED BY:</b> E. McNally	<b>DATE APPROVED:</b> September 26, 2013

**LEGEND**

- SAMPLE LOCATIONS (SOIL BORINGS)
- ===== SECONDARY CONTAINMENT BERM
- x- FENCE





# AES Field Screening Report



Animas Environmental Services, LLC

www.animasenvironmental.com

624 E. Comanche  
Farmington, NM 87401  
505-564-2281

Durango, Colorado  
970-403-3084

Client: ConocoPhillips

Project Location: Jicarilla 20 #9

Date: 9/24/2013

Matrix: Soil

Sample ID	Collection Date	Sample Collection	OVM (ppm)	Chloride (mg/kg)	Analysis Time	Field TPH* (mg/kg)	TPH PQL (mg/kg)	DF	Analysts Initials
SB-1 @ 0.5'	9/24/2013	12:00	0.0	NA	12:43	36.1	20.0	1	DAW
SB-1 @ 2'	9/24/2013	12:03	0.0	NA	12:45	61.4	20.0	1	DAW
SB-2 @ 0.5'	9/24/2013	12:58	0.0	NA	13:44	60.1	20.0	1	DAW
SB-2 @ 2'	9/24/2013	13:00	0.0	NA	13:51	68.1	20.0	1	DAW
SB-3 @ 0.5'	9/24/2013	13:02	0.0	NA	13:54	52.1	20.0	1	DAW
SB-3 @ 2'	9/24/2013	13:05	0.0	NA	13:57	61.4	20.0	1	DAW
SB-4 @ 0.5'	9/24/2013	13:08	0.0	NA	14:01	41.4	20.0	1	DAW
SB-4 @ 2'	9/24/2013	13:10	0.0	NA	14:03	64.1	20.0	1	DAW
SC-1 @ 0.5'	9/24/2013	14:10	NA	80	Not Analyzed for TPH.				
SC-2 @ 2'	9/24/2013	14:15	NA	80	Not Analyzed for TPH.				

DF Dilution Factor  
NA Not Analyzed  
ND Not Detected at the Reporting Limit  
PQL Practical Quantitation Limit

\*Field TPH concentrations recorded may be below PQL.

Field Chloride - Quantab Chloride Titrators or Drop Count Titration with Silver  
Total Petroleum Hydrocarbons - USEPA 418.1

Analyst:

*Debrah Water*