

UNITED STATES
DEPARTMENT OF THE INTERIOR
BUREAU OF LAND MANAGEMENT

RECEIVED

FORM APPROVED
OMB NO. 1004-0137
Expires July 31, 2010

SUNDRY NOTICES AND REPORTS ON WELLS

Do not use this form for proposals to drill or to re-enter an abandoned well. Use Form 3160-3 (APD) for such proposals.

SEP 22 2014

SUBMIT IN TRIPLICATE - Other instructions on page 2

1. Type of Well

☐ Oil Well ☒ Gas Well ☐ Other

2. Name of Operator

ENERGEN RESOURCES CORPORATION

3a. Address

2010 Afton Place, Farmington, NM, 87401

3b. Phone No. (include area code)

505-325-6800

4. Location of Well (Footage, Sec., T., R., M., or Survey Description)

1800' ENL, 1100' FWL, Sec. 14, T26N, R05W

5. Lease Serial No.

Jicarilla 108

6. If Indian, Allottee or Tribe Name

Jicarilla Apache

7. If Unit or CA/Agreement, Name and/or No.

RCVD OCT 7 '14
OIL CONS. DIV.

8. Well Name and No.

Jicarilla 108 16

9. API Well No.

DIST. 3
03-039-06495

10. Field and Pool, or Exploratory Area

S. Blanco Pictured Cliffs

11. County or Parish, State

Rio Arriba NM

12. CHECK APPROPRIATE BOX(ES) TO INDICATE NATURE OF NOTICE, REPORT, OR OTHER DATA

TYPE OF SUBMISSION

☒ Notice of Intent

☐ Subsequent Report

☐ Final Abandonment Notice

TYPE OF ACTION

☐ Acidize

☐ Alter Casing

☐ Casing Repair

☐ Change Plans

☐ Convert to Injection

☐ Deepen

☐ Fracture Treat

☐ New Construction

☒ Plug and Abandon

☐ Plug Back

☐ Production (Start/Resume)

☐ Reclamation

☐ Recomplete

☐ Temporarily Abandon

☐ Water Disposal

☐ Water Shut-Off

☐ Well Integrity

☐ Other

13. Describe Proposed or Completed Operation (clearly state all pertinent details, including estimated starting date of any proposed work and approximate duration thereof. If the proposal is to deepen directionally or recompleat horizontally, give subsurface locations and measured and true vertical depths of all pertinent markers and zones. Attach the Bond under which the work will be performed or provide the Bond No. on file with BLM/BIA. Required subsequent reports shall be filed within 30 days following completion of the involved operations. If the operation results in a multiple completion or recompleat in a new interval, a Form 3160-4 shall be filed once testing has been completed. Final Abandonment Notices shall be filed only after all requirements, including reclamation, have been completed, and the operator has determined that the final site is ready for final inspection.)

Energen Resources plans to plug and abandon the Jicarilla 108 #16 per the attached procedure.

This will be a closed loop operation. NMOCD will be notified 24 hrs prior to commencing operation.

Notify NMOCD 24 hrs
prior to beginning
operations

SEE ATTACHED FOR
CONDITIONS OF APPROVAL

BLM'S APPROVAL OR ACCEPTANCE OF THIS
ACTION DOES NOT RELIEVE THE LESSEE AND
OPERATOR FROM OBTAINING ANY OTHER
AUTHORIZATION REQUIRED FOR OPERATIONS
ON FEDERAL AND INDIAN LANDS

14. I hereby certify that the foregoing is true and correct
Name (Printed/Typed)

Kyle Mason

Title District Engineer

Signature

Date 9/17/2014

THIS SPACE FOR FEDERAL OR STATE OFFICE USE

Approved by

Troy Salyers

Title

Petroleum Eng.

Date

10/2/2014

Conditions of approval, if any, are attached. Approval of this notice does not warrant or certify that the applicant holds legal or equitable title to those rights in the subject lease which would entitle the applicant to conduct operations thereon.

Office

FFO

Title 18 U.S.C. Section 1001, and Title 43 U.S.C. Section 1212, makes it a crime for any person knowingly and willfully to make to any department or agency of the United States any false, fictitious or fraudulent statements or representations as to any matter within its jurisdiction.

NMOCD KC

Jicarilla 108 #16

Current

South Blanco Pictured Cliffs Ext.
1800' FNL, 1100' FWL, Section 14, T-26-N, R-5-W,
Rio Arriba County, NM / API #30-039-06495
Lat _____ / Long _____

Today's Date: 8/29/14

Spud: 8/19/58

Completed: 9/27/58

Elevation: 6947' GL

12-1/14" hole

8-5/8" 32#, H-40 Casing set @ 108'
Cement with 70 sxs (Circulated to Surface)

Nacimiento @ 1606' *est

1-1/4" tubing landed at 3541'

RCVD OCT 7 '14
OIL CONS. DIV.

DIST. 3

Ojo Alamo @ 2939'

Kirtland @ 3133'

Fruitland @ 3343'

TOC @ 3450' (T.S.)

Pictured Cliffs @ 3512'

Pictured Cliffs Perforations:
3522' - 3557'

5.5", 15.5#, J-55 Casing set @ 3641'
Cement with 100 sxs

7-7/8" hole

TD 3642'
PBTD 3593'

Jicarilla 108 #16

Proposed P&A

South Blanco Pictured Cliffs Ext.
1800' FNL, 1100' FWL, Section 14, T-26-N, R-5-W,
Rio Arriba County, NM / API #30-039-06495
Lat _____ / Long _____

Today's Date: 8/29/14

Spud: 8/19/58

Completed: 9/27/58

Elevation: 6947' GL

12-1/14" hole

Nacimiento @ 1606' *est

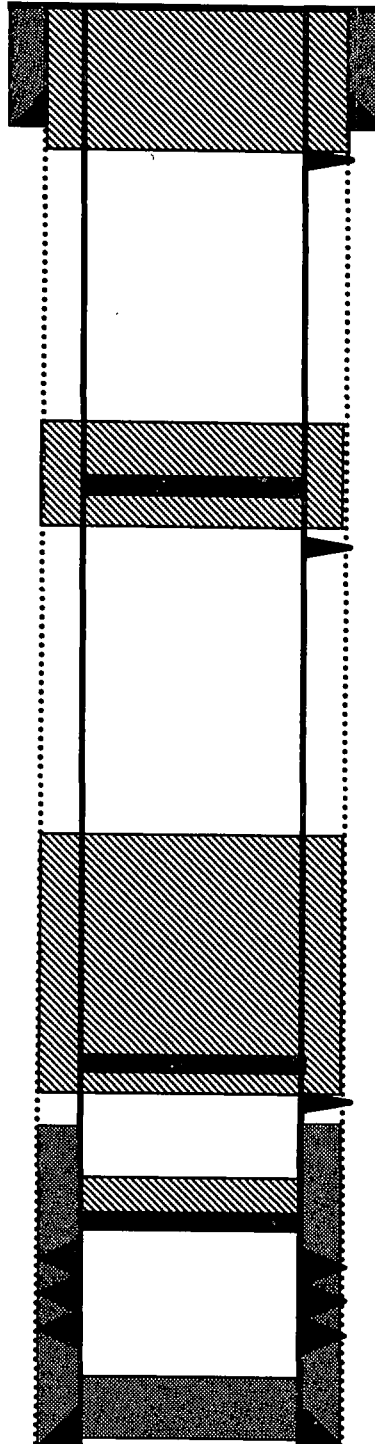
Ojo Alamo @ 2939'

Kirtland @ 3133'

Fruitland @ 3343'

Pictured Cliffs @ 3512'

7-7/8" hole



8-5/8" 32#, H-40 Casing set @ 108'
Cement with 70 sxs (Circulated to Surface)

Perforate @ 158'

Plug #4: 158' - 0'
Class B cement, 60 sxs

Set CR @ 1606'

Plug #3: 1656' - 1556'
Class B cement, 47 sxs
17 inside and 30 outside

Perforate @ 1656'

RCVD OCT 7 '14
OIL CONS. DIV.
DIST. 3

Set CR @ 3343'

Perforate @ 3393'

TOC @ 3450' (T.S.)

Set CR @ 3472'

Plug #2: 3393' - 2889'
Class B cement, 212 sxs
63 inside and 149 outside

Pictured Cliffs Perforations:
3522' - 3557'

5.5", 15.5#, J-55 Casing set @ 3641'
Cement with 100 sxs

TD 3642'
PBTD 3593'

PLUG AND ABANDONMENT PROCEDURE

August 29, 2014

Jicarilla 108 #16

South Blanco Pictured Cliffs Ext.

1800' FNL, 1100' FWL, Section 14, T26N, R5W, Rio Arriba County, New Mexico

API 30-039-06495 / Long _____ / Lat: _____

Note: All cement volumes use 100% excess outside pipe and 50' excess inside. The stabilizing wellbore fluid will be 8.3 ppg, sufficient to balance all exposed formation pressures. All cement will be Class B, mixed at 15.6 ppg with a 1.18 cf/sx yield.

1. This project will use of an A-Plus steel tank to handle waste fluids circulated from the well and cement wash up.
2. Install and test location rig anchors. Comply with all NMOCD, BLM, and Operator safety regulations. MOL and RU daylight pulling unit. Conduct safety meeting for all personnel on location. Record casing, tubing and bradenhead pressures. NU relief line and blow down well. Kill well with water as necessary and at least pump tubing capacity of water down the tubing. ND wellhead and NU BOP. Function test BOP.
3. Rods: Yes____, No X, Unknown____.
Tubing: Yes X, No____, Unknown____, Size 1-1/4", Length 3541'.
Packer: Yes____, No X, Unknown____, Type _____.

If this well has rods or a packer, then modify the work sequence in step #2 as appropriate. Note: LD 1-1/4" tubing and PU 2-3/8" workstring. Round trip gauge ring or casing scraper to 3472' or as deep as possible.

4. **NOTE: BLM requires a CBL log to be run on all wells where the cement did not circulate to surface or where a CBL log was not previously run. This procedure is prepared with the understanding that it may be modified based on the TOC from the CBL.**
5. **Plug #1 (Pictured Cliffs interval, 3472' - 3372'):** TIH and set 5.5" CR at 3472'. Pressure test tubing to 1000#. Load casing with water and circulate well clean. Pressure test casing to 800#. If the casing does not test, then spot or tag subsequent plugs as appropriate. Mix 17 sxs Class B cement and spot a balanced plug inside the casing above the CR to isolate the Pictured Cliffs perforations and top. TOH.

See CoA
6. **Plug #2 (Fruitland, Kirtland and Ojo Alamo tops, 3393' - 2889'):** Perforate squeeze holes at 3393'. Attempt to establish rate if the casing pressure tested. TIH and set CR at 3343'. Mix and pump 212 sxs Class B cement, squeeze 149 sxs outside 5.5" casing and leave 63 sxs inside casing to cover through the Ojo Alamo top. TOH with tubing.

See CoA
7. **Plug #2 (Nacimiento top, 1656' - 1556'):** Perforate squeeze holes at 1656'. Attempt to establish rate if the casing pressure tested. TIH and set CR at 1606'. Mix and pump 47 sxs Class B cement, squeeze 30 sxs outside 5.5" casing and leave 17 sxs inside casing to cover the Nacimiento top. TOH and LD tubing.
8. **Plug #3 (8-5/8" surface casing shoe, 158' - Surface):** Perforate 3 squeeze holes at 158'. Establish circulation out bradenhead with water and circulate the BH annulus clean. Mix approximately 60 sxs Class B cement and pump down the 5.5" casing to circulate good cement out bradenhead. Shut in well and WOC.

9. ND cementing valves and cut off wellhead. Fill annuli with cement as necessary. Install P&A marker to comply with regulations. Record GPS coordinate for P&A marker on tower report. Photograph P&A marker in place. RD, MOL and cut off anchors. Restore location per BLM stipulations

UNITED STATES DEPARTMENT OF THE INTERIOR
BUREAU OF LAND MANAGEMENT
FARMINGTON DISTRICT OFFICE
6251 COLLEGE BLVD.
FARMINGTON, NEW MEXICO 87402

Attachment to notice of
Intention to Abandon:

Re: Permanent Abandonment
Well: Jicarilla 108 #16

CONDITIONS OF APPROVAL

1. Plugging operations authorized are subject to the attached "General Requirements for Permanent Abandonment of Wells on Federal and Indian Leases."
2. Farmington Office is to be notified at least 24 hours before the plugging operations commence (505) 564-7750.
3. The following modifications to your plugging program are to be made:
 - a) Bring the top of plug #2 to 2849 ft. Inside/outside to cover the entire Ojo Alamo fresh water aquifer. Adjust cement volume accordingly.
 - b) Bring the top of plug #3 to 1526 ft. Inside/outside to cover Nacimiento formation top. . Adjust cement volume accordingly.

Operator will run a CBL from 3472 ft., or as deep as possible, to verify cement top. Outside plugs may be revised, based on CBL result. Submit electronic copy of the log for verification to the following addresses: tsalyers@blm.gov Brandon.Powell@state.nm.us

You are also required to place cement excesses per 4.2 and 4.4 of the attached General Requirements.

Office Hours: 7:45 a.m. to 4:30 p.m.