

UNITED STATES
DEPARTMENT OF THE INTERIOR
BUREAU OF LAND MANAGEMENTFORM APPROVED
OMB NO. 1004-0137
Expires July 31, 2010SEP 15 2014
SUNDRY NOTICES AND REPORTS ON WELLSDo not use this form for proposals to drill or to re-enter an
abandoned well. Use Form 3160-3 (APD) for such proposals.

SUBMIT IN TRIPLICATE - Other instructions on page 2

5. Lease Serial No.

NMNM0206995

6. If Indian, Allottee or Tribe Name

PCUD OCT 1 '14

7. If Unit or CA/Agreement, Name and/or No.

OIL CONS. DIV.

8. Well Name and No.

PERF #90 DIST. 3

9. API Well No.

30-045-30172

10. Field and Pool, or Exploratory Area

BASIN FRUITLAND COAL

11. County or Parish, State

SAN JUAN NM

12. CHECK APPROPRIATE BOX(ES) TO INDICATE NATURE OF NOTICE, REPORT, OR OTHER DATA

TYPE OF SUBMISSION

- ☒ Notice of Intent
- ☐ Subsequent Report
- ☐ Final Abandonment Notice

TYPE OF ACTION

- ☐ Acidize ☐ Deepen ☐ Production (Start/Resume) ☐ Water Shut-Off
- ☐ Alter Casing ☐ Fracture Treat ☐ Reclamation ☐ Well Integrity
- ☐ Casing Repair ☐ New Construction ☐ Recomplete ☐ Other
- ☐ Change Plans ☒ Plug and Abandon ☐ Temporarily Abandon
- ☐ Convert to Injection ☐ Plug Back ☐ Water Disposal

13. Describe Proposed or Completed Operation (clearly state all pertinent details, including estimated starting date of any proposed work and approximate duration thereof. If the proposal is to deepen directionally or recompleat horizontally, give subsurface locations and measured and true vertical depths of all pertinent markers and zones. Attach the Bond under which the work will be performed or provide the Bond No. on file with BLM/BIA. Required subsequent reports shall be filed within 30 days following completion of the involved operations. If the operation results in a multiple completion or recompleat in a new interval, a Form 3160-4 shall be filed once testing has been completed. Final Abandonment Notices shall be filed only after all requirements, including reclamation, have been completed, and the operator has determined that the final site is ready for final inspection.)

XTO Energy Inc. proposes to plug & abandon this well per the attached procedure and will be using a Closed Loop System. Please see also the attached current & proposed wellbore diagrams and surface reclamation plan.

BLM'S APPROVAL OR ACCEPTANCE OF THIS ACTION DOES NOT RELIEVE THE LESSEE AND OPERATOR FROM OBTAINING ANY OTHER AUTHORIZATION REQUIRED FOR OPERATIONS ON FEDERAL AND INDIAN LANDS

Notify NMOC 24 hrs
prior to beginning
operations

SEE ATTACHED FOR
CONDITIONS OF APPROVAL

14. I hereby certify that the foregoing is true and correct
Name (Printed/Typed)

SHERRY J. MORROW

Title REGULATORY ANALYST

Signature

Date 9/12/2014

THIS SPACE FOR FEDERAL OR STATE OFFICE USE

Approved by TCM Troy Salvors

Title Petroleum Eng.

Date 9/29/2014

Conditions of approval, if any, are attached. Approval of this notice does not warrant or certify that the applicant holds legal or equitable title to those rights in the subject lease which would entitle the applicant to conduct operations thereon.

Office FFO

Perf #90
Sec 35, T 30 N, R 14 W
San Juan County, New Mexico
8/26/2014

Plug and Abandon Procedure

AFE Number: 1407816

Spud Date: 3/18/2001

Surface Casing: 7", 20#, J-55 csg @ 140'. Cmt'd w/60 sx. Circ 4 bbls cmt to surf.

Production Casing: 4-1/2", 10.5#, J-55 csg @ 1,249'. Cmt'd w/131 sx. Circ 5 bbls cmt to surf.
Capacity: .0159 bbls/ft or .6699 gal/ft

Production Tubing: 2-3/8" string

Rod String: 5/8" string

Pump: 1-1/2" rod insert pump

Perforations: Fruitland Coal: 1,082' – 1,102'

PBTD: 1,141'

Recent Production: INA since 7/31/2014. 6 mcfpd, 1 bwpd (downhole failure).

Notify NMOCD & BLM 24 hours prior to beginning plugging operations

1. Check for COA's and approved NOI before beginning operations.
2. Test rig anchors.
3. Set flowback tank.
4. M!RU completion rig. Review JSA.
5. Kill well.
6. TOH & LD rods & pump.
7. ND WH. NU & FT BOP.
8. TOH & LD tubing.
9. TIH 3-7/8" bit to 1,082' on 2-3/8" workstring. TOH.
10. TIH 4-1/2" CR and set @ $\pm 1,060'$. PT tubing. Sting out of CR and circulate hole clean.

11. PT casing and CR to 550 psig. If casing does not test, contact engineer.
12. MIRU cement truck. Review JSA.
13. **Perforation Isolation Plug (1,060' – 1,010')**: Pump 8 sx Class "B" cement (15.6 ppg, 1.18 cuft/sx yield) down tubing and spot a balanced plug from 1,060' – 1,010' (volume calculated with 50' excess).
14. **Fruitland Coal Top Plug (730' – 630')**: Pump 12 sx Class "B" cement (15.6 ppg, 1.18 cuft/sx yield) down tubing and spot a balanced plug from 730' – 630' (volume calculated with 50' excess).
15. **Casing Shoe & Surface Plug (190' – Surface)**: Pump 19 sx Class "B" cement (15.6 ppg, 1.18 cuft/sx yield) down tubing and spot a balanced plug from 190' – Surface' (volume calculated with 50' excess).
16. TOH & LD tubing.
17. RDMO cement truck.
18. WOC 4 hours.
19. Cut off WH. Fill in casing as needed with cement. Install above ground P&A marker.
20. Cut off anchors and reclaim location.

Checklist

Regulatory:

1. NOI to P&A on form C-103 & 3160-5
2. Submit a post-work sundry on form C-103 & 3160-5 which details the P&A work and location work within 30 days of completing all required restoration work.

Equipment:

1. 1 flowback tank
2. 1,100' 2-3/8" workstring
3. 4-1/2" cement retainer
4. 3-7/8" bit
5. 39 sx Class "B" cement
6. 1 above ground marker

Services:

1. Completion rig
2. Cement truck



XTO - Wellbore Diagram

Current

Well Name: Perf 90

API/UWI 30045301720000	EW Dist (ft) 1,800.0	EW Ref FWL	N/S Dist (ft) 790.0	N/S Ref FSL	Location T30N-R14W-S35	Field Name Basin Fruitland Coal	County San Juan	State/Province New Mexico
Well Configuration Type Vertical	XTO ID B 77530	Orig KB Elev (ft) 5,500.00	Gr Elev (ft) 5,495.00	KB-Grd (ft) 5.00	Spud Date 3/17/2001	PBTD (All) (ftKB) Original Hole - 1141.0	Total Depth (ftKB) 1,254.0	Method Of Production Beam

Well Config: Vertical - Original Hole, 8/26/2014 10:10:20 AM

Schematic - Actual		Incl	ftKB (TVD)	ftKB (MD)	Zone	Top (ftKB)	Btm (ftKB)							
					1,082.0	1,102.0								
					Casing Strings									
					Casing Description	OD (in)	Wt (lbs/ft)	String Grade	Top Connection	Set Depth (ftKB)				
					Surface	7	20.00	J-55		140.0				
					Casing Description	OD (in)	Wt (lbs/ft)	String Grade	Top Connection	Set Depth (ftKB)				
					Production	4 1/2	10.50	J-55		1,249.0				
					Cement									
					Description	Type	String							
					Surface Casing Cement	casing	Surface, 140.0ftKB							
					Comment									
					Cmt'd w/60 sx CI B cmt w/2% CaCl2. Circ 4 bbls cmt to surf.									
					Description	Type	String							
					Production Casing Cement	casing	Production, 1,249.0ftKB							
					Comment									
					Cmt'd w/42 sx CI B Cmt w/2% Metasilicate & .25 pps Celloflake f/b 88 sx CI H Neat Cmt. Circ 5 bbls cmt to surf.									
					Perforations									
					Date	Top (ftKB)	Btm (ftKB)	Shot Dens (shots/ft)	Hole Diameter (in)	Phasing (")	Curr... Status	Zone		
					5/8/2001	1,082.0	1,092.0	4.0	0.420			Fruitland Coal		
					5/8/2001	1,096.0	1,102.0	4.0	0.420			Fruitland Coal		
					Tubing Strings									
					Tubing Description	Run Date	Set Depth (ftKB)							
					Tubing - Production	5/20/2014	1,124.5							
					Tubing Components									
					Item Description	Jts	Model	OD (in)	Wt (lbs/ft)	Grade	Top Thread	Len (ft)	Top (ftKB)	Btm (ftKB)
					Tubing	31	T&C Upset	2 3/8	4.70	J-55		1,004.78	5.0	1,009.8
					Tubing	3	T&C Upset	2 3/8	4.70	J-55		93.97	1,009.8	1,103.8
					Seat Nipple	1		2 3/8				0.75	1,103.8	1,104.5
					OEMA	1		2 3/8	4.70	J-55		20.00	1,104.5	1,124.5
					Rods									
					Rod Description	Run Date	String Length (ft)	Set Depth (ftKB)						
					Insert Pump	5/20/2014	1,118.00	1,117.0						
					Rod Components									
					Item Description	Jts	Model	OD (in)	Grade	Len (ft)	Top (ftKB)	Btm (ftKB)		
					Polished Rod	1		1 1/4		22.00	-1.0	21.0		
					Rod Sub	1		5/8	D	6.00	21.0	27.0		
					Sucker Rod	32		5/8	D	800.00	27.0	827.0		
					Sucker Rod w/Molded Guides	10		7/8	D	250.00	827.0	1,077.0		
					Shear Tool - 21K	1		7/8		0.50	1,077.0	1,077.5		
					Sucker Rod w/Molded Guides	1		7/8	D	25.00	1,077.5	1,102.5		
					Lift Sub	1		1		1.00	1,102.5	1,103.5		
					Spiral Rod Guide	1		3/4		0.50	1,103.5	1,104.0		
					Rod Insert Pump	1	RHAC	1 1/2		12.00	1,104.0	1,116.0		
					Strainer Nipple	1		1		1.00	1,116.0	1,117.0		
					Stimulations & Treatments									
					Frac Start Date	Top Perf (ft...)	Bottom Pe...	V (slurry) (...)	Total Prop...	AIR (b...	ATP (psi)	MTP (psi)	ISIP (psi)	
					5/9/2001	1082	1102		73,360.0	33	1,600.0	1,83...	730.0	
					Comment									
					A. w/500 Gals 15% HCL w/No BS. AIR 5 BPM @ 1,400 PSIG. Frac'd FC dwn 4-1/2"									
					Csg. 30,072 Gals XL Gel Wtr carrying 59,280# 20/40 Brady & 14,080 SLC RCS. MAX SD									
					Conc 4 PPG. Flushed w/17 BW. ATP 1,600. AIR 33 BPM. MAX PSI 1,830. ISIP 730									
					PSIG. 15" SIP 650 PSIG.									

Top (MD):1,082,
Des:Fruitland Coal

PBTD,
1,141

Fish, 4,052,
1,141-1,220

TD, 1,254

Top (MD): 1,082,
Des: Fruitland CoalPBTD,
1,141Fish, 4.052,
1,141-1,220

TD, 1,254

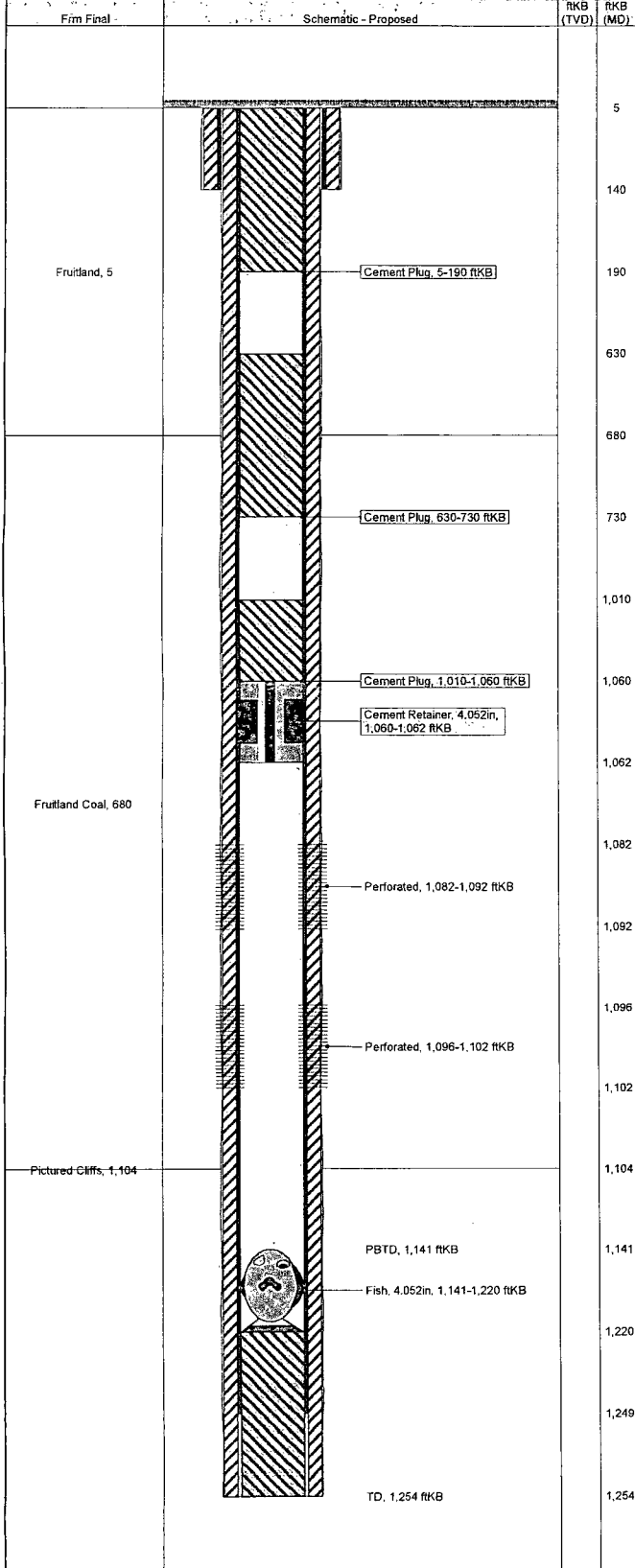


XTO - Proposed P&A Wellbore Diagram

Well Name: Perf 90

API/UWI	E/W Dist (ft)	E/W Ref	N/S Dist (ft)	N/S Ref	Location	Field Name	County	State/Province
30045301720000	1,800.0	FWL	790.0	FSL	T30N-R14W-S35	Basin Fruitland Coal	San Juan	New Mexico
Well Configuration Type	XTO ID B	Orig KB Elev (ft)	Gr Elev (ft)	KB-Grd (ft)	Spud Date	PBTD (All) (ftKB)	Total Depth (ftKB)	Method Of Production
Vertical	77530	5,500.00	5,495.00	5.00	3/17/2001	Original Hole - 1141.0	1,254.0	Beam

Well Config: Vertical - Original Hole, 8/26/2014 10:10:20 AM



Zones						
Zone		Top (ftKB)		Btm (ftKB)		
Fruitland Coal		1,082.0		1,102.0		
Casing Strings						
Casing Description	OD (in)	Wt (lbs/ft)	String Grade	Top Connection	Set Depth (ftK...	
Surface	7	20.00	J-55		140.0	
Casing Description	OD (in)	Wt (lbs/ft)	String Grade	Top Connection	Set Depth (ftK...	
Production	4 1/2	10.50	J-55		1,249.0	
Cement						
Description	Type			String		
Surface Casing Cement	casing			Surface, 140.0ftKB		
Comment						
Cmt'd w/60 sx Cl B cmt w/2% CaCl2. Circ 4 bbls cmt to surf.						
Description	Type			String		
Production Casing Cement	casing			Production, 1,249.0ftKB		
Comment						
Cmt'd w/42 sx Cl B Cmt w/2% Metasilicate & .25 pps Celloflake f/b 88 sx Cl H Neat Cmt. Circ 5 bbls cmt to surf.						
Description	Type			String		
Cement Plug	plug			Production, 1,249.0ftKB		
Comment						
Plug 1: Pump 8 sx f/1,060' - 1,010'						
Description	Type			String		
Cement Plug	plug			Production, 1,249.0ftKB		
Comment						
Plug 2: Pump 12 sx f/730' - 630'						
Description	Type			String		
Cement Plug	plug			Production, 1,249.0ftKB		
Comment						
Plug 3: Pump 19 sx f/190 - surf						
Other In Hole						
Description			OD (in)	Top (ftKB)		
Cement Retainer			4.052	1,060.0		
Fish			4.052	1,141.0		
Perforations						
Date	Top (ftKB)	Btm (ftKB)	Shot Dens (shots/ft)	Hole Diameter (in)	Phasing (°)	Zone
5/8/2001	1,082.0	1,092.0	4.0	0.420		Fruitland Coal
5/8/2001	1,096.0	1,102.0	4.0	0.420		Fruitland Coal

**UNITED STATES DEPARTMENT OF THE INTERIOR
BUREAU OF LAND MANAGEMENT
FARMINGTON DISTRICT OFFICE
6251 COLLEGE BLVD.
FARMINGTON, NEW MEXICO 87402**

Attachment to notice of
Intention to Abandon:

Re: Permanent Abandonment
Well: Perf #90

CONDITIONS OF APPROVAL

1. Plugging operations authorized are subject to the attached "General Requirements for Permanent Abandonment of Wells on Federal and Indian Lease."
2. Farmington Office is to be notified at least 24 hours before the plugging operations commence (505) 564-7750.
3. The following modification(s) to your plugging program are to be made:
 - a) Set the Fruitland Coal top plug (758-658) ft.

You are also required to place cement excesses per 4.2 and 4.4 of the attached General Requirements.

Office Hours: 7:45 a.m. to 4:30 p.m.