

# Chaco 2306-19M #190H

## LYBROOK GALLUP Horizontal

(page 1)

Spud: 4/1/14

Completed: 6/19/14

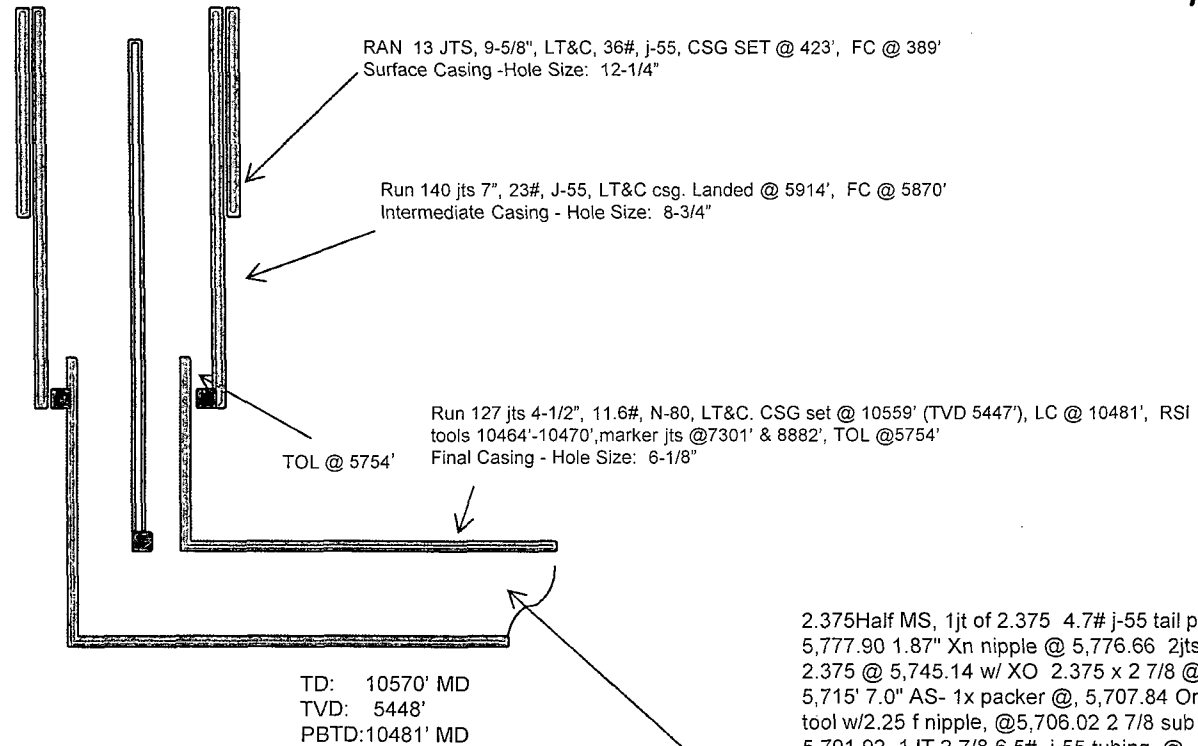
CONFIDENTIAL

SHL: 1205' FSL & 243' FWL  
SW/4 SW/4 Section 19 (M), T23N, R6W

BHL: 1581' FSL & 226' FWL  
NW/4 SW/4 Section 24 (L), T23N, R 7W

Sandoval., NM  
Elevation: 7012'  
API: 30-043-21189

Tops	MD	TVD
Ojo Alamo	1386'	1382'
Kirtland	1630'	1625'
Pictured Cliffs	1936'	1930'
Lewis	2027'	2020'
Chacra	2351'	2344'
Cliff House	3442'	3435'
Menefee	3463'	3456'
Point Lookout	4209'	4202'
Mancos	4402'	4395'



HOLE SIZE	CASING	CEMENT	VOLUME	CMT TOP
12-1/4"	9-5/8"	245'sx	222 cu.ft.	Surface
8-3/4"	7"	822 sx	1461 cu. ft.	Surface
6-1/8"	4-1/2"	380 sx	536 cu. ft.	TOL 5754'

2.375Half MS, 1jt of 2.375 4.7# j-55 tail pipe, @ 5,777.90 1.87" Xn nipple @ 5,776.66 2jts of 2.375 @ 5,745.14 w/ XO 2.375 x 2 7/8 @ 5,715' 7.0" AS- 1x packer @, 5,707.84 On & off tool w/2.25 f nipple, @5,706.02 2 7/8 sub @ 5,701.92 1JT 2 7/8-6.5# j-55 tubing, @ 5,670.02 GLV # 1 @ 5,665.92 7jts of 2 7/8 @ 5,443.05 2.31" X-nipple @ 5,441.80 12jts of 2 7/8" @ 5,063.70 GLV # 2 @ 5,059.60, 16 jts of 2 7/8 tubing @ 4,544.88 GLV #3 @ 4,540.78, 19jts of 2 7/8 tubing, @ 3,928.04 GLV # 4 @ 3,923.94, 21jts of 2 7/8 tubing, @ 3,241.92 GLV # 5 @ 3,237.82, 28 jts. of 2 7/8 @ 2,329.06 GLV # 6 @ 2,324.96 32 jts of 2 7/8 @ 1,285.28 GLV # 7 @ 1,281.18 39 jts of 2 7/8 tubing, @14.5 KB- END OF TUBING @ 5,813.44 ( 3 jts of 2.375 & 157 jts of 2 7/8 = 160 Total )

Lg 6/24/14

# Chaco 2306-19M #190H LYBROOK GALLUP Horizontal

(page 2 – lateral with completion)

## Gallup 4<sup>th</sup>:

9321'-9553'-  
with 24, 0.40"  
holes. Frac  
Gallup 4<sup>th</sup> stage  
with 215,000# ,  
20/40 PSA  
Sand

## Gallup 1<sup>st</sup>:

10264'-10397' +  
RSI TOOL @  
10470' with 18,  
0.40" holes. with  
218,000# 20/40  
PSA Sand

## Gallup 6<sup>th</sup>:

8704'-8876'-  
with 24, 0.40"  
holes. Frac  
Gallup 6<sup>th</sup> stage  
with 214,800# ,  
20/40 PSA  
Sand

## Gallup 7<sup>th</sup>:

8283'-8590'-  
with 24, 0.40"  
holes. Frac  
Gallup 7<sup>th</sup>  
stage with  
215,000# ,  
20/40 PSA  
Sand

## Gallup 5<sup>th</sup>:

8975'-9222'-with  
24, 0.40" holes.  
Frac Gallup 5<sup>th</sup>  
stage with  
216,900# , 20/40  
PSA Sand

## Gallup 3<sup>rd</sup>:

9652'-9854'- with  
24, 0.40" holes.  
Frac Gallup 3<sup>rd</sup>  
stage with  
214,800# , 20/40  
PSA Sand

## Gallup 2<sup>nd</sup>:

9953'-10155'-  
with 24 total,  
0.40" holes.  
Frac Gallup 2<sup>nd</sup>  
stage with  
214,700# ,  
20/40 PSA  
Sand

## Gallup 11<sup>th</sup>:

7014'-7226'-  
with 24, 0.40" holes.  
Frac Gallup 11<sup>th</sup> stage  
with 262,880# , 20/40  
PSA Sand

## Gallup 9<sup>th</sup>:

7634'-7866'- with  
24, 0.40" holes.  
Frac Gallup 9<sup>th</sup>  
stage with  
216,500# , 20/40  
PSA Sand

## Gallup 8<sup>th</sup>:

7982'-8169'- with  
24, 0.40" holes.  
Frac Gallup 8<sup>th</sup>  
stage with  
212,500# , 20/40  
PSA Sand

## Gallup 10<sup>th</sup>:

7330'-7532'-  
with 24, 0.40"  
holes. Frac  
Gallup 10<sup>th</sup>  
stage with  
214,000# ,  
20/40 PSA  
Sand

## Gallup 12<sup>th</sup>:

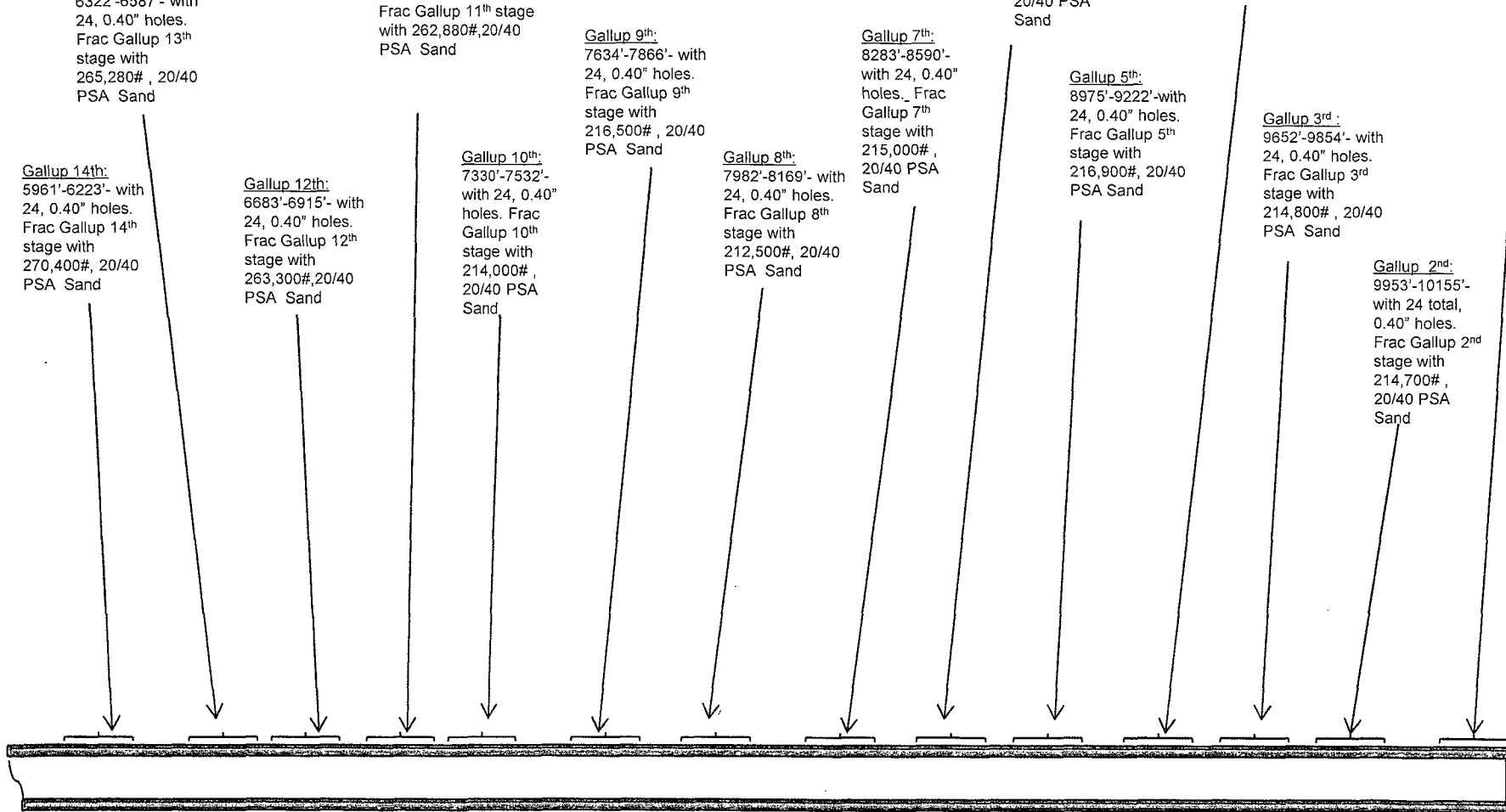
6683'-6915'- with  
24, 0.40" holes.  
Frac Gallup 12<sup>th</sup>  
stage with  
263,300# , 20/40  
PSA Sand

## Gallup 13<sup>th</sup>:

6322'-6587'- with  
24, 0.40" holes.  
Frac Gallup 13<sup>th</sup>  
stage with  
265,280# , 20/40  
PSA Sand

## Gallup 14<sup>th</sup>:

5961'-6223'- with  
24, 0.40" holes.  
Frac Gallup 14<sup>th</sup>  
stage with  
270,400# , 20/40  
PSA Sand



See page 1 for upper portion of hole