

District I
1625 N. French Dr., Hobbs, NM 88240
District II
811 S. First St., Artesia, NM 88210
District III
1000 Rio Brazos Road, Aztec, NM 87410
District IV
1220 S. St. Francis Dr., Santa Fe, NM 87505

State of New Mexico
Energy Minerals and Natural Resources
Department
Oil Conservation Division
1220 South St. Francis Dr.
Santa Fe, NM 87505

Form C-144
Revised June 6, 2013

For temporary pits, below-grade tanks, and multi-well fluid management pits, submit to the appropriate NMOCD District Office.
For permanent pits submit to the Santa Fe Environmental Bureau office and provide a copy to the appropriate NMOCD District Office.

Pit, Below-Grade Tank, or

RCVD OCT 1 '14
OIL CONS. DIV.

DIST. 3

12251

Proposed Alternative Method Permit or Closure Plan Application

- Type of action: ☐ Below grade tank registration
☐ Permit of a pit or proposed alternative method
☒ Closure of a pit, below-grade tank, or proposed alternative method
☐ Modification to an existing permit/or registration
☐ Closure plan only submitted for an existing permitted or non-permitted pit, below-grade tank, or proposed alternative method

39-31181

Amended Instructions: Please submit one application (Form C-144) per individual pit, below-grade tank or alternative request

Please be advised that approval of this request does not relieve the operator of liability should operations result in pollution of surface water, ground water or the environment. Nor does approval relieve the operator of its responsibility to comply with any other applicable governmental authority's rules, regulations or ordinances.

1.
Operator: LOGOS OPERATING, LLC OGRID #: 289408
Address: 4001 NORTH BUTLER AVENUE, BUILDING 7101 FARMINGTON NM 87401
Facility or well name: NCRA STATE 7A
API Number: 30-039-31181 OCD Permit Number: 11173
U/L or Qtr/Qtr A Section 16 Township 24N Range 6W County: RIO ARRIBA
Center of Proposed Design: Latitude 36.316702° N Longitude 107.466932° W NAD: ☐ 1927 ☒ 1983
Surface Owner: ☐ Federal ☒ State ☐ Private ☐ Tribal Trust or Indian Allotment

2.
☒ Pit: Subsection F, G or J of 19.15.17.11 NMAC
Temporary: ☒ Drilling ☐ Workover
☐ Permanent ☐ Emergency ☐ Cavitation ☐ P&A ☐ Multi-Well Fluid Management Low Chloride Drilling Fluid ☐ yes ☐ no
☒ Lined ☐ Unlined Liner type: Thickness 20 mil ☒ LLDPE ☐ HDPE ☐ PVC ☐ Other _____
☐ String-Reinforced
Liner Seams: ☒ Welded ☒ Factory ☐ Other _____ Volume: 8,000 bbl Dimensions: L 130 x W 60 x D 10

3.
☐ Below-grade tank: Subsection I of 19.15.17.11 NMAC
Volume: _____ bbl Type of fluid: _____
Tank Construction material: _____
☐ Secondary containment with leak detection ☐ Visible sidewalls, liner, 6-inch lift and automatic overflow shut-off
☐ Visible sidewalls and liner ☐ Visible sidewalls only ☐ Other _____
Liner type: Thickness _____ mil ☐ HDPE ☐ PVC ☐ Other _____

4. ☐ Alternative Method:

Submittal of an exception request is required. Exceptions must be submitted to the Santa Fe Environmental Bureau office for consideration of approval.

5. **Fencing:** Subsection D of 19.15.17.11 NMAC (Applies to permanent pits, temporary pits, and below-grade tanks)

- ☐ Chain link, six feet in height, two strands of barbed wire at top (Required if located within 1000 feet of a permanent residence, school, hospital, institution or church)
☐ Four foot height, four strands of barbed wire evenly spaced between one and four feet
☒ Alternate. Please specify 4' HOG WIRE WITH ONE STRAND OF BARBED WIRE ON TOP.

6.

Netting: Subsection E of 19.15.17.11 NMAC (*Applies to permanent pits and permanent open top tanks*)

- ☐ Screen ☐ Netting ☐ Other _____
- ☐ Monthly inspections (If netting or screening is not physically feasible)

7.

Signs: Subsection C of 19.15.17.11 NMAC

- ☐ 12"x 24", 2" lettering, providing Operator's name, site location, and emergency telephone numbers
- ☒ Signed in compliance with 19.15.16.8 NMAC

8.

Variations and Exceptions:

Justifications and/or demonstrations of equivalency are required. Please refer to 19.15.17 NMAC for guidance.

Please check a box if one or more of the following is requested, if not leave blank:

- ☐ Variance(s): Requests must be submitted to the appropriate division district for consideration of approval.
- ☐ Exception(s): Requests must be submitted to the Santa Fe Environmental Bureau office for consideration of approval.

9.

Siting Criteria (regarding permitting): 19.15.17.10 NMAC

Instructions: The applicant must demonstrate compliance for each siting criteria below in the application. Recommendations of acceptable source material are provided below. Siting criteria does not apply to drying pads or above-grade tanks.

General siting

Ground water is less than 25 feet below the bottom of a low chloride temporary pit or below-grade tank.

- ☐ NM Office of the State Engineer - iWATERS database search; ☐ USGS; ☐ Data obtained from nearby wells

☐ Yes ☐ No
☐ NA

Ground water is less than 50 feet below the bottom of a Temporary pit, permanent pit, or Multi-Well Fluid Management pit.

NM Office of the State Engineer - iWATERS database search; USGS; Data obtained from nearby wells

☐ Yes ☐ No
☐ NA

Within incorporated municipal boundaries or within a defined municipal fresh water well field covered under a municipal ordinance adopted pursuant to NMSA 1978, Section 3-27-3, as amended. **(Does not apply to below grade tanks)**

- Written confirmation or verification from the municipality; Written approval obtained from the municipality

☐ Yes ☐ No

Within the area overlying a subsurface mine. **(Does not apply to below grade tanks)**

- Written confirmation or verification or map from the NM EMNRD-Mining and Mineral Division

☐ Yes ☐ No

Within an unstable area. **(Does not apply to below grade tanks)**

- Engineering measures incorporated into the design; NM Bureau of Geology & Mineral Resources; USGS; NM Geological Society; Topographic map

☐ Yes ☐ No

Within a 100-year floodplain. **(Does not apply to below grade tanks)**

- FEMA map

☐ Yes ☐ No

Below Grade Tanks

Within 100 feet of a continuously flowing watercourse, significant watercourse, lake bed, sinkhole, wetland or playa lake (measured from the ordinary high-water mark).

- Topographic map; Visual inspection (certification) of the proposed site

☐ Yes ☐ No

Within 200 horizontal feet of a spring or a fresh water well used for public or livestock consumption;

- NM Office of the State Engineer - iWATERS database search; Visual inspection (certification) of the proposed site

☐ Yes ☐ No

Temporary Pit using Low Chloride Drilling Fluid (maximum chloride content 15,000 mg/liter)

Within 100 feet of a continuously flowing watercourse, or any other significant watercourse or within 200 feet of any lakebed, sinkhole, or playa lake (measured from the ordinary high-water mark). (Applies to low chloride temporary pits.)

- Topographic map; Visual inspection (certification) of the proposed site

☐ Yes ☐ No

Within 300 feet from a occupied permanent residence, school, hospital, institution, or church in existence at the time of initial application.

- Visual inspection (certification) of the proposed site; Aerial photo; Satellite image

☐ Yes ☐ No

Within 200 horizontal feet of a spring or a private, domestic fresh water well used by less than five households for domestic or stock watering purposes, or 300feet of any other fresh water well or spring, in existence at the time of the initial application.

NM Office of the State Engineer - iWATERS database search; Visual inspection (certification) of the proposed site

☐ Yes ☐ No

Within 100 feet of a wetland.

- US Fish and Wildlife Wetland Identification map; Topographic map; Visual inspection (certification) of the proposed site

☐ Yes ☐ No

Temporary Pit Non-low chloride drilling fluid

Within 300 feet of a continuously flowing watercourse, or any other significant watercourse, or within 200 feet of any lakebed, sinkhole, or playa lake (measured from the ordinary high-water mark).

- Topographic map; Visual inspection (certification) of the proposed site

☐ Yes ☐ No

Within 300 feet from a permanent residence, school, hospital, institution, or church in existence at the time of initial application.

- Visual inspection (certification) of the proposed site; Aerial photo; Satellite image

☐ Yes ☐ No

Within 500 horizontal feet of a spring or a private, domestic fresh water well used by less than five households for domestic or stock watering purposes, or 1000 feet of any other fresh water well or spring, in the existence at the time of the initial application;

- NM Office of the State Engineer - iWATERS database search; Visual inspection (certification) of the proposed site

☐ Yes ☐ No

Within 300 feet of a wetland.

- US Fish and Wildlife Wetland Identification map; Topographic map; Visual inspection (certification) of the proposed site

☐ Yes ☐ No

Permanent Pit or Multi-Well Fluid Management Pit

Within 300 feet of a continuously flowing watercourse, or 200 feet of any other significant watercourse, or lakebed, sinkhole, or playa lake (measured from the ordinary high-water mark).

- Topographic map; Visual inspection (certification) of the proposed site

☐ Yes ☐ No

Within 1000 feet from a permanent residence, school, hospital, institution, or church in existence at the time of initial application.

- Visual inspection (certification) of the proposed site; Aerial photo; Satellite image

☐ Yes ☐ No

Within 500 horizontal feet of a spring or a fresh water well used for domestic or stock watering purposes, in existence at the time of initial application.

- NM Office of the State Engineer - iWATERS database search; Visual inspection (certification) of the proposed site

☐ Yes ☐ No

Within 500 feet of a wetland.

- US Fish and Wildlife Wetland Identification map; Topographic map; Visual inspection (certification) of the proposed site

☐ Yes ☐ No

10.

Temporary Pits, Emergency Pits, and Below-grade Tanks Permit Application Attachment Checklist: Subsection B of 19.15.17.9 NMAC

Instructions: Each of the following items must be attached to the application. Please indicate, by a check mark in the box, that the documents are attached.

- ☐ Hydrogeologic Report (Below-grade Tanks) - based upon the requirements of Paragraph (4) of Subsection B of 19.15.17.9 NMAC
- ☐ Hydrogeologic Data (Temporary and Emergency Pits) - based upon the requirements of Paragraph (2) of Subsection B of 19.15.17.9 NMAC
- ☐ Siting Criteria Compliance Demonstrations - based upon the appropriate requirements of 19.15.17.10 NMAC
- ☐ Design Plan - based upon the appropriate requirements of 19.15.17.11 NMAC
- ☐ Operating and Maintenance Plan - based upon the appropriate requirements of 19.15.17.12 NMAC
- ☐ Closure Plan (Please complete Boxes 14 through 18, if applicable) - based upon the appropriate requirements of Subsection C of 19.15.17.9 NMAC and 19.15.17.13 NMAC

☐ Previously Approved Design (attach copy of design) API Number: _____ or Permit Number: _____

11.

Multi-Well Fluid Management Pit Checklist: Subsection B of 19.15.17.9 NMAC

Instructions: Each of the following items must be attached to the application. Please indicate, by a check mark in the box, that the documents are attached.

- ☐ Design Plan - based upon the appropriate requirements of 19.15.17.11 NMAC
- ☐ Operating and Maintenance Plan - based upon the appropriate requirements of 19.15.17.12 NMAC
- ☐ A List of wells with approved application for permit to drill associated with the pit.
- ☐ Closure Plan (Please complete Boxes 14 through 18, if applicable) - based upon the appropriate requirements of Subsection C of 19.15.17.9 NMAC and 19.15.17.13 NMAC
- ☐ Hydrogeologic Data - based upon the requirements of Paragraph (4) of Subsection B of 19.15.17.9 NMAC
- ☐ Siting Criteria Compliance Demonstrations - based upon the appropriate requirements of 19.15.17.10 NMAC

☐ Previously Approved Design (attach copy of design) API Number: _____ or Permit Number: _____

12.

Permanent Pits Permit Application Checklist: Subsection B of 19.15.17.9 NMAC

Instructions: Each of the following items must be attached to the application. Please indicate, by a check mark in the box, that the documents are attached.

- ☐ Hydrogeologic Report - based upon the requirements of Paragraph (1) of Subsection B of 19.15.17.9 NMAC
☐ Siting Criteria Compliance Demonstrations - based upon the appropriate requirements of 19.15.17.10 NMAC
☐ Climatological Factors Assessment
☐ Certified Engineering Design Plans - based upon the appropriate requirements of 19.15.17.11 NMAC
☐ Dike Protection and Structural Integrity Design - based upon the appropriate requirements of 19.15.17.11 NMAC
☐ Leak Detection Design - based upon the appropriate requirements of 19.15.17.11 NMAC
☐ Liner Specifications and Compatibility Assessment - based upon the appropriate requirements of 19.15.17.11 NMAC
☐ Quality Control/Quality Assurance Construction and Installation Plan
☐ Operating and Maintenance Plan - based upon the appropriate requirements of 19.15.17.12 NMAC
☐ Freeboard and Overtopping Prevention Plan - based upon the appropriate requirements of 19.15.17.11 NMAC
☐ Nuisance or Hazardous Odors, including H₂S, Prevention Plan
☐ Emergency Response Plan
☐ Oil Field Waste Stream Characterization
☐ Monitoring and Inspection Plan
☐ Erosion Control Plan
☐ Closure Plan - based upon the appropriate requirements of Subsection C of 19.15.17.9 NMAC and 19.15.17.13 NMAC

13.

Proposed Closure: 19.15.17.13 NMAC

Instructions: Please complete the applicable boxes, Boxes 14 through 18, in regards to the proposed closure plan.

- Type: ☐ Drilling ☐ Workover ☐ Emergency ☐ Cavitation ☐ P&A ☐ Permanent Pit ☐ Below-grade Tank ☐ Multi-well Fluid Management Pit
☐ Alternative
- Proposed Closure Method: ☐ Waste Excavation and Removal
☐ Waste Removal (Closed-loop systems only)
☐ On-site Closure Method (Only for temporary pits and closed-loop systems)
☐ In-place Burial ☐ On-site Trench Burial
☐ Alternative Closure Method

14.

Waste Excavation and Removal Closure Plan Checklist: (19.15.17.13 NMAC) **Instructions:** Each of the following items must be attached to the closure plan. Please indicate, by a check mark in the box, that the documents are attached.

- ☐ Protocols and Procedures - based upon the appropriate requirements of 19.15.17.13 NMAC
☐ Confirmation Sampling Plan (if applicable) - based upon the appropriate requirements of Subsection C of 19.15.17.13 NMAC
☐ Disposal Facility Name and Permit Number (for liquids, drilling fluids and drill cuttings)
☐ Soil Backfill and Cover Design Specifications - based upon the appropriate requirements of Subsection H of 19.15.17.13 NMAC
☐ Re-vegetation Plan - based upon the appropriate requirements of Subsection H of 19.15.17.13 NMAC
☐ Site Reclamation Plan - based upon the appropriate requirements of Subsection H of 19.15.17.13 NMAC

15.

Siting Criteria (regarding on-site closure methods only): 19.15.17.10 NMAC

Instructions: Each siting criteria requires a demonstration of compliance in the closure plan. Recommendations of acceptable source material are provided below. Requests regarding changes to certain siting criteria require justifications and/or demonstrations of equivalency. Please refer to 19.15.17.10 NMAC for guidance.

Ground water is less than 25 feet below the bottom of the buried waste. - NM Office of the State Engineer - iWATERS database search; USGS; Data obtained from nearby wells	<input type="checkbox"/> Yes <input type="checkbox"/> No <input type="checkbox"/> NA
Ground water is between 25-50 feet below the bottom of the buried waste - NM Office of the State Engineer - iWATERS database search; USGS; Data obtained from nearby wells	<input type="checkbox"/> Yes <input type="checkbox"/> No <input type="checkbox"/> NA
Ground water is more than 100 feet below the bottom of the buried waste. - NM Office of the State Engineer - iWATERS database search; USGS; Data obtained from nearby wells	<input type="checkbox"/> Yes <input type="checkbox"/> No <input type="checkbox"/> NA
Within 100 feet of a continuously flowing watercourse, or 200 feet of any other significant watercourse, lakebed, sinkhole, or playa lake (measured from the ordinary high-water mark). - Topographic map; Visual inspection (certification) of the proposed site	<input type="checkbox"/> Yes <input type="checkbox"/> No
Within 300 feet from a permanent residence, school, hospital, institution, or church in existence at the time of initial application. - Visual inspection (certification) of the proposed site; Aerial photo; Satellite image	<input type="checkbox"/> Yes <input type="checkbox"/> No
Within 300 horizontal feet of a private, domestic fresh water well or spring used for domestic or stock watering purposes, in existence at the time of initial application. - NM Office of the State Engineer - iWATERS database; Visual inspection (certification) of the proposed site	<input type="checkbox"/> Yes <input type="checkbox"/> No
Written confirmation or verification from the municipality; Written approval obtained from the municipality	<input type="checkbox"/> Yes <input type="checkbox"/> No
Within 300 feet of a wetland. US Fish and Wildlife Wetland Identification map; Topographic map; Visual inspection (certification) of the proposed site	<input type="checkbox"/> Yes <input type="checkbox"/> No
Within incorporated municipal boundaries or within a defined municipal fresh water well field covered under a municipal ordinance	

adopted pursuant to NMSA 1978, Section 3-27-3, as amended.

- Written confirmation or verification from the municipality; Written approval obtained from the municipality

☐ Yes ☐ No

Within the area overlying a subsurface mine.

- Written confirmation or verification or map from the NM EMNRD-Mining and Mineral Division

☐ Yes ☐ No

Within an unstable area.

- Engineering measures incorporated into the design; NM Bureau of Geology & Mineral Resources; USGS; NM Geological Society; Topographic map

☐ Yes ☐ No

Within a 100-year floodplain.

- FEMA map

☐ Yes ☐ No

16.

On-Site Closure Plan Checklist: (19.15.17.13 NMAC) *Instructions: Each of the following items must be attached to the closure plan. Please indicate, by a check mark in the box, that the documents are attached.*

- ☐ Siting Criteria Compliance Demonstrations - based upon the appropriate requirements of 19.15.17.10 NMAC
- ☐ Proof of Surface Owner Notice - based upon the appropriate requirements of Subsection E of 19.15.17.13 NMAC
- ☐ Construction/Design Plan of Burial Trench (if applicable) based upon the appropriate requirements of Subsection K of 19.15.17.11 NMAC
- ☐ Construction/Design Plan of Temporary Pit (for in-place burial of a drying pad) - based upon the appropriate requirements of 19.15.17.11 NMAC
- ☐ Protocols and Procedures - based upon the appropriate requirements of 19.15.17.13 NMAC
- ☐ Confirmation Sampling Plan (if applicable) - based upon the appropriate requirements of 19.15.17.13 NMAC
- ☐ Waste Material Sampling Plan - based upon the appropriate requirements of 19.15.17.13 NMAC
- ☐ Disposal Facility Name and Permit Number (for liquids, drilling fluids and drill cuttings or in case on-site closure standards cannot be achieved)
- ☐ Soil Cover Design - based upon the appropriate requirements of Subsection H of 19.15.17.13 NMAC
- ☐ Re-vegetation Plan - based upon the appropriate requirements of Subsection H of 19.15.17.13 NMAC
- ☐ Site Reclamation Plan - based upon the appropriate requirements of Subsection H of 19.15.17.13 NMAC

17.

Operator Application Certification:

I hereby certify that the information submitted with this application is true, accurate and complete to the best of my knowledge and belief.

Name (Print): _____ Title: _____

Signature: _____ Date: _____

e-mail address: _____ Telephone: _____

18.

OCD Approval: ☐ Permit Application (including closure plan) ☒ Closure Plan (only) ☐ OCD Conditions (see attachment)

OCD Representative Signature: Jonathan D. Kelly Approval Date: 10/31/2014

Title: Compliance Officer OCD Permit Number: _____

19.

Closure Report (required within 60 days of closure completion): 19.15.17.13 NMAC

Instructions: Operators are required to obtain an approved closure plan prior to implementing any closure activities and submitting the closure report. The closure report is required to be submitted to the division within 60 days of the completion of the closure activities. Please do not complete this section of the form until an approved closure plan has been obtained and the closure activities have been completed.

☒ Closure Completion Date: 02/18/14

20.

Closure Method:

- ☐ Waste Excavation and Removal ☒ On-Site Closure Method ☐ Alternative Closure Method ☐ Waste Removal (Closed-loop systems only)
- ☐ If different from approved plan, please explain.

21.

Closure Report Attachment Checklist: *Instructions: Each of the following items must be attached to the closure report. Please indicate, by a check mark in the box, that the documents are attached.*

- ☒ Proof of Closure Notice (surface owner and division)
 - ☐ Proof of Deed Notice (required for on-site closure for private land only)
 - ☒ Plot Plan (for on-site closures and temporary pits)
 - ☐ Confirmation Sampling Analytical Results (if applicable)
 - ☒ Waste Material Sampling Analytical Results (required for on-site closure)
 - ☒ Disposal Facility Name and Permit Number
 - ☒ Soil Backfilling and Cover Installation
 - ☒ Re-vegetation Application Rates and Seeding Technique
 - ☒ Site Reclamation (Photo Documentation)
- On-site Closure Location: Latitude 36.316702° N Longitude 107.466932° W NAD: ☐ 1927 ☒ 1983

Operator Closure Certification:

I hereby certify that the information and attachments submitted with this closure report is true, accurate and complete to the best of my knowledge and belief. I also certify that the closure complies with all applicable closure requirements and conditions specified in the approved closure plan.

Name (Print): Jamie Goodwin

Title: Regulatory Tech.

Signature: Jamie GoodwinDate: 10/1/14e-mail address: Goodwin@logosoperating.comTelephone: 505-330-9333

Logos Operating, LLC
San Juan Basin
Closure Report

Lease Name:
API NO:

In accordance with Rule 19.15.17.12 NMAC the following information describes the closure requirements of temporary pits on Logos Operating, LLC (Logos) locations. This is Logos' standard procedure for all temporary pits. A Separate plan will be submitted for any temporary pit that does not conform to this plan.

All closure activities will include proper documentation and be available for review upon request and will be submitted to OCD within 60 days of the pit closure. Closure report will be filed on C-144 and incorporated the following:

- Detail on Capping and Covering, where applicable (See report)
- Plot Plan (Pit diagram) (Included as an attachment)
- Inspection reports (Included as an attachment)
- Sampling Results (Included as an attachment)
- C-105 (Included as an attachment)
- Copy of Deed Notice will be filed with County Clerk (Not required on Federal, State or Tribal land as stated by FAQ dated October 30, 2008)

General Plan

- 1 All free standing liquids will be removed at the start of the pit closure process from the pit and disposed of in a division-approved facility or recycle, reuse or reclaim the liquids in a manner that the appropriate division district office approves.

All recovered liquids were disposed of at Basin Disposal (permit #NM-01-005) and any sludge or soil required to be removed to facilitate closure was hauled to Envirotech Land Farm (Permit #NM-01-011) and JFL Landfarm % JFH (Permit #NM-01-0010B).

- 2 The preferred method of closure for all temporary pits will be on-site burial, assuming that all criteria listed in sub-section (D) of 19.15.17.13 are met.

The pit was closed using onsite burial.

- 3 The surface owner shall be notified of Logos proposed closure plan using a means that provides proof of notice i.e., certified mail, return receipt requested.

The closure process notification to the landowner was sent via email. (See attached) (Well located on Federal Land/STATE LAND, certified mail is not required for Federal Land per BLM/OCD).

*Due to confusion on surface owner notification for State land, only the NMOCD was notified. In the future the State Land Office will be notified where the State is the surface owner.

*Variance Explanation: Rule 19.15.17.13 E. If the surface owner is a public entity (BLM/State/Tribal) then an email notification will be sent, of plans to close the temporary pit at least 72 hours, but no more than 1 week, prior to any closure operation. The notice will include the well name, API number, and location.

- 4 Within 6 months of the Rig Off status occurring Logos will ensure that temporary pits are closed, re-contoured, and reseeded.

The closure plan requirements were met due to rig move off date as noted on C-105. (See attached).
Pit Extensions: Pit extension approved until 2/22/14

- 5 Notice of Closure will be given to the Aztec Division office between 72 hours and one week of closure via email, or verbally, The notification of closure will include the following:
 - i. Operator's name
 - ii. Location by Unit Letter, Section, Township, and Range. Well name and API Number

Notification is attached.

- 6 Pit contents shall be mixed with non-waste containing, earthen material in order to achieve the solidification process. The solidification process will be accomplished using a combination of natural drying and mechanically mixing. Pit contents will be mixed with non-waste, earthen material to a consistency that is deemed a safe and stable. The mixing ratio shall not exceed 3 parts clean soil to 1 part pit contents.

Logos mixed the pit contents with non-waste containing, earthen material in order to achieve the solidification process. The solidification process was accomplished by using a combination of natural drying and mechanically mixing. Pit contents were mixed with non-waste, earthen material to a consistency that is deemed as safe and stable. The mixing ratio consisted of not more than 3 parts clean soil to 1 part pit contents.

- 7 A five point composite sample will be taken of the pit using sampling tools and all samples tested per 19.15.17.13(D)(5). In the event that the criteria are not met, all contents will be handled per 9.15.17.13(D)(7) i.e., Dig and haul.

A five point composite sample was taken of the pit using sampling tools and all samples tested per 19.15.17.13(D)(5). (Sample results attached).

Components	Tests Method	Limit (mg/Kg)	Results (ppm)
Benzene	EPA SW-846 8021B or 8015M	<u>10</u>	<u>SEE</u>
BTEX	EPA SW-846 8021B or 8260B	<u>50</u>	<u>ATTACHED</u>
TPH	EPA SW-846 418.1	<u>2500</u>	
GRO/DRO	EPA SW-846 8015M	<u>1000</u>	
Chlorides	EPA 300.0	<u>80000</u>	

- 8 Upon completion of solidification and testing, Logos will fold the outer edges of the trench liner to overlap the waste material in the pit area, then install a geomembrane cover over the waste material in the pit to prevent collections of infiltration water after the soil cover is in place; geomembrane a 20-mil, string reinforced, LLDPE liner, or equivalent complying with EPA SW-846 method 9090A requirements.

The pit material passed solidification and testing standards. Logos folded the outer edges of the trench liner to overlap the waste material in the pit area, then installed a geomembrane cover over the waste material and folded liner as per 19.15.17.13(8)(a)(b).

- 9 The pit area will be backfilled with compacted, non-waste containing, earthen material. A minimum of four feet of cover shall be achieved and the cover shall include one foot of suitable material to establish vegetation at the site, or the background thickness of topsoil, whichever is greater.

The pit area was then backfilled with compacted, non-waste containing, earthen material. More than four feet of cover was achieved and the cover included one foot of suitable material to establish vegetation at the site.

- 10 Re-contouring of location will match fit, shape, line, form and texture of the surrounding area. Re-shaping will include drainage control, prevent ponding, and prevent erosion. Natural drainages will be unimpeded and water bars and/or silt traps will be placed in areas where needed to prevent erosion on a large scale. Final re-contour shall have a uniform appearance with smooth surface, fitting the natural landscape.

The pit area was re-contoured to match fit, shape, line, form and texture of the surrounding area. Reshaping included drainage control, to prevent ponding and erosion. Natural drainages were unimpeded and water bars and/or silt traps were placed in areas where needed to prevent erosion on a large scale. Final re-contour has a uniform appearance with smooth surface, fitting the natural landscape.

- 11 Notification will be sent to OCD when the reclaimed area is seeded.

Provision 11 was accomplished in accordance with NMOCD 19.15.17.13(5)(d) Notification will be sent to the OCD when re-vegetation is established.

- 12 Logos shall seed the distributed areas the first growing season after the operator closes the pit. Seeding will be accomplished via drilling on the contour whenever practical or by other division-approved methods. BLM or Forest Service stipulated seed mixed will be used on federal lands. Vegetative cover will be established that will reflect a life-form ratio of plus or minus fifty percent (50%) of pre-disturbance levels and will equal

seventy (70%) of the native perennial vegetative cover (un-impacted) consisting of at least three native plant species, including at least one grass, but not including noxious weeds, and maintain that cover thorough two successive growing seasons. Repeat seeding or planting will be continued until successful vegetative growth occurs.

Provision 12 was accomplished in accordance with NMOCD 19.15.17.13(5)(d) Notification will be sent to the OCD when re-vegetation is established.

- 13 The temporary pit will be located with a steel marker, no less than four inches in diameter, cemented in a hole three feet deep in the center of the onsite burial. The marker will be flush with the ground to allow access of the active well pad and for safety concerns. The marker will include a threaded collar to be used for future abandonment. The top of the marker will contain a welded steel 12" square plate that indicates the onsite burial of the temporary pit. The plate will be easily removable and a four foot tall riser will be threaded into the top of the collar marker and welded around the base with the operator's information at the time of all wells on the pad are abandoned. The operator's information will include the following: Operator Name, Lease Name, Well Name and number, Unit Number, Section, Township, Range and an indicator that the marker is an onsite burial location.

Provision 13 was accomplished by installing a steel marker in the temporary pit, no less than four inches in diameter, cemented in a hole three feet deep in the center of the onsite burial. The marker is flush with the ground to allow access of the active well pad and for safety concerns. The top of the marker contains a welded steel 12" square plate that indicates the onsite burial of the temporary pit. The plate contains the following: Operator's name, Lease Name, Well Name and number, Unit Number, Section, Township, Range and an indicator that the marker is an onsite burial location.

The plate will be easily removable and a four foot tall riser will be threaded into the top of the collar marker and welded around the base with the following operator's information at the time of all wells on the pad are abandoned. The riser will also indicate that the marker is for an onsite burial location.

**Operator Name: LOGOS
Lease Name & Well Number:
Unit Letter:
Section:
Township:
Range:
API#:
OBL**

- 14 Logos inspected and documented daily and weekly reports on the above Temporary Pit. Logos inspected any liner breeches, fluid seeps or spills, HC's on top of temporary pit, free of miscellaneous solid waste or debris, discharge line integrity, fence integrity, any dead wildlife or livestock and inspection of the freeboard. Logos will provide maintained documentation of inspections upon request.

Inspection Start Date: 5/16/13

Inspection End Date: 4/21/14

NOTE: During start and end dates of temporary pit inspections no issues found.

DISTRICT I
1625 N. French Dr., Hobbs, N.M. 88240
Phone: (505) 593-6161 Fax: (505) 593-0720

DISTRICT II
611 S. First St., Artesia, N.M. 88210
Phone: (505) 748-1883 Fax: (505) 748-9780

DISTRICT III
1000 Rio Brazos Rd., Aztec, N.M. 87410
Phone: (505) 334-6178 Fax: (505) 334-6170

DISTRICT IV
1820 S. St. Francis Dr., Santa Fe, NM 87506
Phone: (505) 476-3460 Fax: (505) 476-3462

State of New Mexico
Energy, Minerals & Natural Resources Department

Form C-102
Revised August 1, 2011

Submit one copy to appropriate
District Office

OIL CONSERVATION DIVISION
1220 South St. Francis Dr.
Santa Fe, NM 87505

☐ AMENDED REPORT

WELL LOCATION AND ACREAGE DEDICATION PLAT

*API Number		*Pool Code	*Pool Name
*Property Code	*Property Name NCRA STATE		*Well Number 7A
*UGRID No.	*Operator Name LOGOS OPERATING, LLC		*Elevation 6695.6'

¹⁰ Surface Location

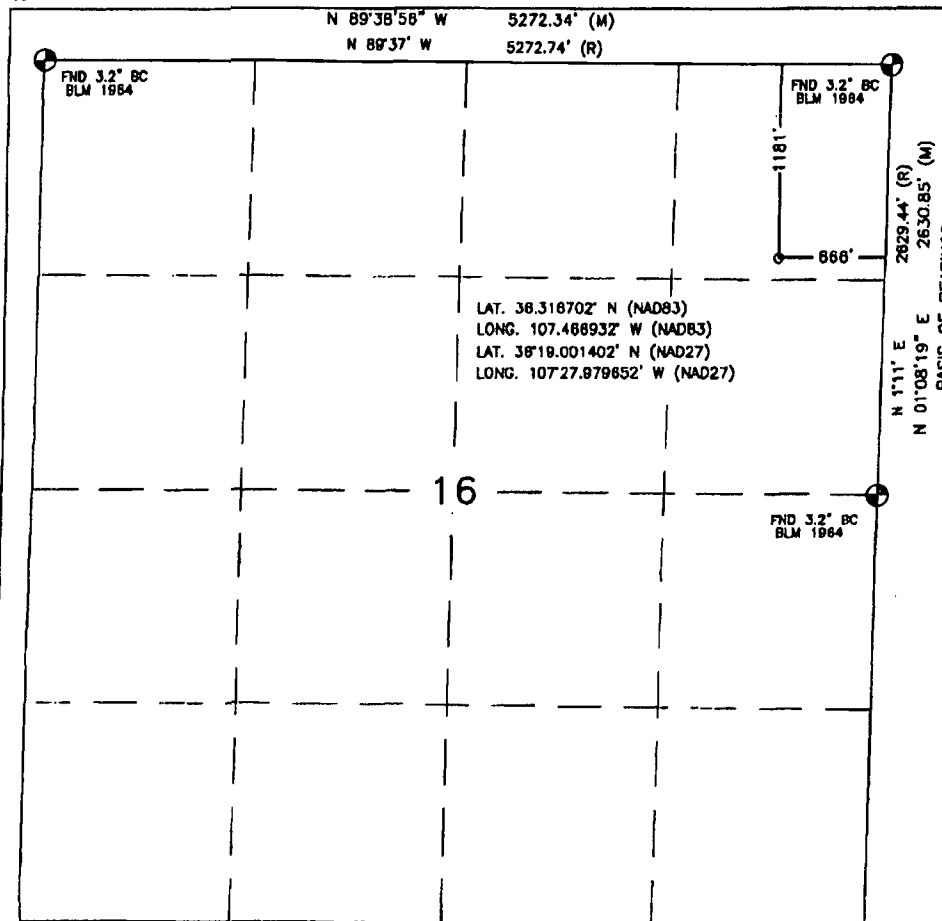
UL or lot no.	Section	Township	Range	Lot Idn	Feet from the	North/South line	Feet from the	East/West line	County
A	16	24N	6W		1181'	NORTH	666'	EAST	RIO ARriba

¹¹ Bottom Hole Location If Different From Surface

UL or lot no.	Section	Township	Range	Lot Idn	Feet from the	North/South line	Feet from the	East/West line	County
Dedicated Acres			Joint or Infill		Consolidation Code		Order No.		

NO ALLOWABLE WILL BE ASSIGNED TO THIS COMPLETION UNTIL ALL INTERESTS HAVE BEEN CONSOLIDATED
OR A NON-STANDARD UNIT HAS BEEN APPROVED BY THE DIVISION

18



17 OPERATOR CERTIFICATION

I hereby certify that the information contained herein is true and complete to the best of my knowledge and belief, and that this organization either owns a working interest or unleased mineral interest in the land including the proposed bottom hole location or has a right to drill this well at this location pursuant to a contract with an owner of such a mineral or working interest, or to a voluntary pooling agreement or a compulsory pooling order heretofore entered by the division.

Signature: *Kristy Graham* Date: 4/17/13

Printed Name: Kristy Graham

E-mail Address: Kgraham@logosresourcesllc.com

18 SURVEYOR CERTIFICATION

I hereby certify that the well location shown on this plat was plotted from field notes of actual surveys made by me or under my supervision, and that the same is true and correct to the best of my belief.

DECEMBER 11, 2012

Date of Survey

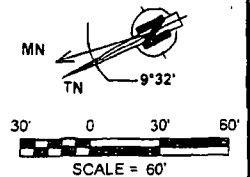
Signature and Seal of Professional Surveyor:



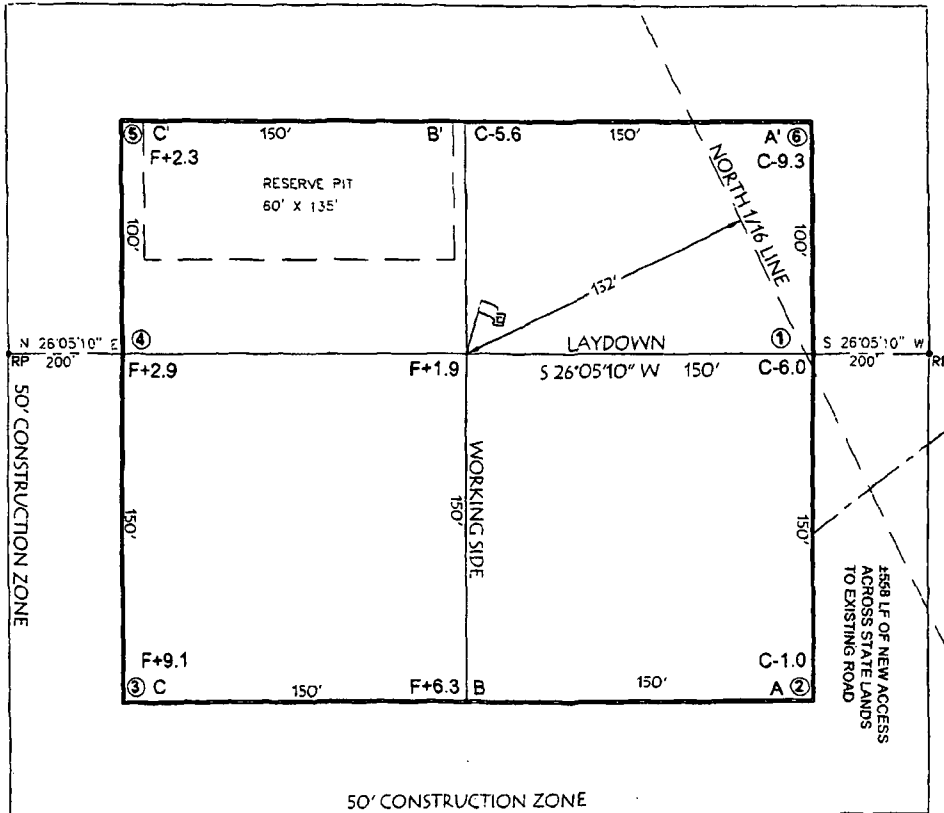
DAVID RUSSELL
Certificate Number 10201

WELL FLAG
 LATITUDE: 36.315702° N
 LONGITUDE: 107.466932° W
CENTER OF PIT
 LATITUDE: 36.316700° N
 LONGITUDE: 107.466734° W
 ELEVATION: 6683.6'
 DATUM: NAD83 & NAVD88

LOGOS Operating, LLC
 NCRA STATE 7H
 1181' FNL & 666' FEL
 LOCATED IN THE NE/4 NE/4 OF SECTION 16,
 T24N, R6W, N.M.P.M.,
 RIO ARriba COUNTY, NEW MEXICO
 GROUND ELEVATION: 6694', NAVD 88
 FINISHED PAD ELEVATION: 6695.6', NAVD 88



- NOTES:**
- 1.) BASIS OF BEARING: BETWEEN FOUND MONUMENTS AT THE EAST QUARTER CORNER AND THE NORTHEAST CORNER OF SECTION 16, TOWNSHIP 24 NORTH, RANGE 6 WEST, N.M.P.M., RIO ARriba COUNTY, NEW MEXICO. LINE BEARS: N 01°08'18" E A DISTANCE OF 1630.89 FEET AS MEASURED BY G.P.S.
 - 2.) LATITUDE, LONGITUDE AND ELLIPSOIDAL HEIGHT BASED ON AZTEC CORNERS 1: PHASE CENTER. DISTANCES SHOWN ARE GROUND DISTANCES USING A TRANSVERSE MERCATOR PROJECTION FROM A WGS84 ELLIPSOID, CONVERTED TO NADES. NAVD88 ELEVATIONS AS PREDICTED BY GEOID03.
 - 3.) LOCATION OF UNDERGROUND UTILITIES DEPICTED ARE APPROXIMATE. PRIOR TO EXCAVATION UNDERGROUND UTILITIES SHOULD BE FIELD VERIFIED. ALL CONSTRUCTION ACTIVITIES SHOULD BE FIELD VERIFIED WITH NEW MEXICO ONE-CALL AUTHORITIES AT LEAST 48 HOURS PRIOR TO CONSTRUCTION.



SLOPES TO BE CONSTRUCTED TO MATCH THE ORIGINAL CONTOURS AS CLOSE AS POSSIBLE.

TOTAL PERMITTED AREA
 350' x 400' = 3.21 ACRES
 SCALE: 1" = 60'
 JOB No.: LGS011
 DATE: 12/19/12
 DRAWN BY: GRR

NOTE:
 Scorpion Survey & Consulting, LLC, INC. IS NOT LIABLE FOR UNDERGROUND UTILITIES OR PIPELINES. CONTRACTOR SHOULD CALL ONE-CALL FOR LOCATION OF ANY MARKED OR UNMARKED, BURIED PIPELINES OR CABLES ON WELL PAD, IN CONSTRUCTION ZONE AND/OR ACCESS ROAD AT LEAST TWO (2) WORKING DAYS PRIOR TO CONSTRUCTION.

Scorpion Survey & Consulting, L.L.C.
 55 County Road 3312
 Aztec, New Mexico 87410
 (505) 333-2945



Table 1, Summary of Analytical Results
 Logos Operating, LLC
 NCRA State #7A
 Site Assessment Report
 Rio Arriba County, New Mexico
 Project Number 12035-0024

Sample Description	Sample Number	Date	Benzene USEPA Method 8021 (ppm)	BTEX USEPA Method 8021 (ppm)	TPH USEPA Method 8015 (ppm)	TPH USEPA Method 418.1 (ppm)	Chlorides USEPA Method 4500 (ppm)
NMOCD/RCRA Standards	NA	NA	10	50	1000	2500	80000
Drill Pit Composite	1	8/5/2013	ND	.25	ND	156	120

NS = Not Sampled

ND = Non-Detect at Stated Method's Detection Limit

* Values in **BOLD** above regulatory standards



Analytical Report

Report Summary

Client: Logos Operating, LLC

Chain Of Custody Number: 15924

Samples Received: 8/5/2013 3:30:00PM

Job Number: 12035-0024

Work Order: P308013

Project Name/Location: Conf. Sampling- NCRA

State #7A Pit Closure

Entire Report Reviewed By:

A handwritten signature in black ink, appearing to read "Tim Cain", is written over a horizontal line.

Date: 8/12/13

Tim Cain, Laboratory Manager

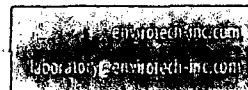
The results in this report apply to the samples submitted to Envirotech's Analytical Laboratory and were analyzed in accordance with the chain of custody document supplied by you, the client, and as such are for your exclusive use only. The results in this report are based on the sample as received unless otherwise noted. Partial or incomplete reproduction of this report is prohibited, unless approved by Envirotech, Inc. If you have any questions regarding this analytical report, please don't hesitate to contact Envirotech's Laboratory Staff

5796 US Highway 64, Farmington, NM 87401

Three Springs - 65 Mercado Street, Suite 115, Durango, CO 81301

Ph: (505) 632-0615 Fx: (505) 632-1865

Ph: (970) 259-0615 Fr: (800) 362-1879





Logos Operating, LLC
PO Box 18
Flora Vista NM, 87415

Project Name: Conf. Sampling- NCRA State #7A Pit Closure
Project Number: 12035-0024
Project Manager: Tiffany McIntosh

Reported:
12-Aug-13 11:52

Analytical Report for Samples

Client Sample ID	Lab Sample ID	Matrix	Sampled	Received	Container
7A	P308013-01A	Sludge	08/05/13	08/05/13	Glass Jar, 4 oz

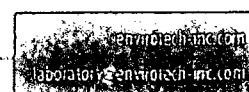
Partial or incomplete reproduction of this report is prohibited, unless approved by Envirotech, Inc

5796 US Highway 64, Farmington, NM 87401

Three Springs • 65 Mercado Street, Suite 115, Durango, CO 81301

Ph: 505/ 632-0615 Fx: 505/ 632-1865

Ph: 970/ 259-0615 Fr: (800) 362-1879





Logos Operating, LLC
PO Box 18
Flora Vista NM, 87415

Project Name: Conf. Sampling- NCRA State #7A Pit Closure
Project Number: 12035-0024
Project Manager: Tiffany McIntosh

Reported:
12-Aug-13 11:52

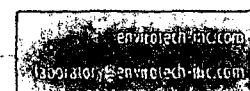
7A
P308013-01 (Solid)

Analyte	Result	Reporting Limit	Units	Dilution	Batch	Prepared	Analyzed	Method	Notes
Volatile Organics by EPA 8021									
Benzene	ND	0.05	mg/kg	1	1332006	06-Aug-13	08-Aug-13	EPA 8021B	
Toluene	0.07	0.05	mg/kg	1	1332006	06-Aug-13	08-Aug-13	EPA 8021B	
Ethylbenzene	ND	0.05	mg/kg	1	1332006	06-Aug-13	08-Aug-13	EPA 8021B	
p,m-Xylene	0.10	0.05	mg/kg	1	1332006	06-Aug-13	08-Aug-13	EPA 8021B	
o-Xylene	0.05	0.05	mg/kg	1	1332006	06-Aug-13	08-Aug-13	EPA 8021B	
Total Xylenes	0.15	0.05	mg/kg	1	1332006	06-Aug-13	08-Aug-13	EPA 8021B	
Total BTEX	0.25	0.05	mg/kg	1	1332006	06-Aug-13	08-Aug-13	EPA 8021B	
Surrogate: Bromochlorobenzene		83.3 %	80-120		1332006	06-Aug-13	08-Aug-13	EPA 8021B	
Surrogate: 1,4-Difluorobenzene		96.2 %	80-120		1332006	06-Aug-13	08-Aug-13	EPA 8021B	
Surrogate: Fluorobenzene		97.5 %	80-120		1332006	06-Aug-13	08-Aug-13	EPA 8021B	
Nonhalogenated Organics by 8015									
Gasoline Range Organics (C6-C10)	ND	5.00	mg/kg	1	1332007	06-Aug-13	06-Aug-13	EPA 8015D	
Diesel Range Organics (C10-C28)	ND	5.00	mg/kg	1	1332007	06-Aug-13	06-Aug-13	EPA 8015D	
GRO and DRO Combined Fractions	ND	5.00	mg/kg	1	1332007	06-Aug-13	06-Aug-13	EPA 8015D	
Total Petroleum Hydrocarbons by 418.1									
Total Petroleum Hydrocarbons	156	20.0	mg/kg	1	1332010	06-Aug-13	06-Aug-13	EPA 418.1	
Cation/Anion Analysis									
Chloride	120	10.0	mg/kg	1	1332008	06-Aug-13	06-Aug-13	EPA 300.0	

Partial or incomplete reproduction of this report is prohibited, unless approved by Envirotech, Inc.

5796 US Highway 64, Farmington, NM 87401
Three Springs - 65 Mercado Street, Suite 115, Durango, CO 81301

Ph (505) 632-0615 Fx (505) 632-1865
Ph (970) 259-0615 Fx (800) 362-1879





Logos Operating, LLC	Project Name:	Conf. Sampling- NCRA State #7A Pit Closure	Reported:
PO Box 18	Project Number:	12035-0024	12-Aug-13 11:52
Flora Vista NM, 87415	Project Manager:	Tiffany McIntosh	

Volatile Organics by EPA 8021 - Quality Control

Envirotech Analytical Laboratory

Analyte	Result	Reporting Limit	Units	Spike Level	Source Result	%REC	%REC Limits	RPD	RPD Limit	Notes
---------	--------	-----------------	-------	-------------	---------------	------	-------------	-----	-----------	-------

Batch 1332006 - Purge and Trap EPA 5030A

Blank (1332006-BLK1)

Prepared: 06-Aug-13 Analyzed: 08-Aug-13

Benzene	ND	0.05	mg/kg							
Toluene	ND	0.05	"							
Ethylbenzene	ND	0.05	"							
p,m-Xylene	ND	0.05	"							
o-Xylene	ND	0.05	"							
Total Xylenes	ND	0.05	"							
Total BTEX	ND	0.05	"							
Surrogate: Bromochlorobenzene	41.0		ug/L	50.0		82.1	80-120			
Surrogate: 1,4-Difluorobenzene	50.2		"	50.0		100	80-120			
Surrogate: Fluorobenzene	49.3		"	50.0		98.6	80-120			

Duplicate (1332006-DUP1)

Source: P308013-01

Prepared: 06-Aug-13 Analyzed: 08-Aug-13

Benzene	ND	0.05	mg/kg	ND					30	
Toluene	0.07	0.05	"	0.07				9.08	30	
Ethylbenzene	ND	0.05	"	ND					30	
p,m-Xylene	0.12	0.05	"	0.10				15.3	30	
o-Xylene	0.05	0.05	"	0.05				6.20	30	
Surrogate: Bromochlorobenzene	46.6		ug/L	50.0		93.1	80-120			
Surrogate: 1,4-Difluorobenzene	52.2		"	50.0		104	80-120			
Surrogate: Fluorobenzene	53.3		"	50.0		107	80-120			

Matrix Spike (1332006-MS1)

Source: P308013-01

Prepared: 06-Aug-13 Analyzed: 08-Aug-13

Benzene	48.8		ug/L	50.0	0.73	96.1	39-150			
Toluene	49.4		"	50.0	1.37	96.0	46-148			
Ethylbenzene	48.9		"	50.0	0.63	96.6	32-160			
p,m-Xylene	98.6		"	100	2.02	96.6	46-148			
o-Xylene	47.8		"	50.0	1.03	93.5	46-148			
Surrogate: Bromochlorobenzene	47.0		"	50.0		94.1	80-120			
Surrogate: 1,4-Difluorobenzene	52.9		"	50.0		106	80-120			
Surrogate: Fluorobenzene	53.1		"	50.0		106	80-120			

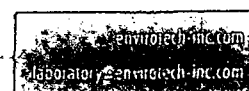
Partial or Incomplete reproduction of this report is prohibited, unless approved by Envirotech, Inc.

5796 US Highway 64, Farmington, NM 87401

Ph (505) 632-0615 Fx (505) 632-1865

Three Springs • 65 Mercado Street, Suite 115, Durango, CO 81301

Ph (970) 259-0615 Fx (800) 362-1879





Logos Operating, LLC
PO Box 18
Flora Vista NM, 87415

Project Name: Conf. Sampling- NCRA State #7A Pit Closure
Project Number: 12035-0024
Project Manager: Tiffany McIntosh

Reported:
12-Aug-13 11:52

Nonhalogenated Organics by 8015 - Quality Control

Envirotech Analytical Laboratory

Analyte	Result	Reporting Limit	Units	Spike Level	Source Result	%REC	%REC Limits	RPD	RPD Limit	Notes
---------	--------	--------------------	-------	----------------	------------------	------	----------------	-----	--------------	-------

Batch 1332007 - GRO/DRO Extraction EPA 3550C

Blank (1332007-BLK1)

Prepared & Analyzed: 06-Aug-13

Gasoline Range Organics (C6-C10)	ND	4.99	mg/kg
Diesel Range Organics (C10-C28)	ND	4.99	"
GRO and DRO Combined Fractions	ND	4.99	"

Duplicate (1332007-DUP1)

Source: P308013-01

Prepared & Analyzed: 06-Aug-13

Gasoline Range Organics (C6-C10)	ND	5.00	mg/kg	ND	30
Diesel Range Organics (C10-C28)	ND	5.00	"	ND	30

Matrix Spike (1332007-MS1)

Source: P308013-01

Prepared & Analyzed: 06-Aug-13

Gasoline Range Organics (C6-C10)	264	5.26	mg/kg	263	ND	100	75-125
Diesel Range Organics (C10-C28)	266	5.26	"	263	ND	101	75-125

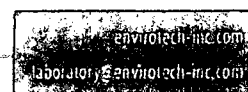
Partial or incomplete reproduction of this report is prohibited, unless approved by Envirotech, Inc.

5796 US Highway 64, Farmington, NM 87401

Three Springs • 65 Mercado Street, Suite 115, Durango, CO 81301

Ph: (505) 632-0615 Fx: (505) 632-1865

Ph: (970) 259-0615 Fx: (800) 362-1879





Logos Operating, LLC	Project Name:	Conf. Sampling- NCRA State #7A Pit Closure	Reported:
PO Box 18	Project Number:	12035-0024	12-Aug-13 11:52
Flora Vista NM, 87415	Project Manager:	Tiffany McIntosh	

Total Petroleum Hydrocarbons by 418.1 - Quality Control

Envirotech Analytical Laboratory

Analyte	Result	Reporting Limit	Units	Spike Level	Source Result	%REC	%REC Limits	RPD	RPD Limit	Notes
---------	--------	-----------------	-------	-------------	---------------	------	-------------	-----	-----------	-------

Batch 1332010 - 418 Freon Extraction

Blank (1332010-BLK1)

Prepared & Analyzed: 06-Aug-13

Total Petroleum Hydrocarbons ND 20.0 mg/kg

Duplicate (1332010-DUP1)

Source: P308013-01

Prepared & Analyzed: 06-Aug-13

Total Petroleum Hydrocarbons 152 20.0 mg/kg 156 2.43 30

Matrix Spike (1332010-MS1)

Source: P308013-01

Prepared & Analyzed: 06-Aug-13

Total Petroleum Hydrocarbons 1900 19.9 mg/kg 1990 156 87.6 80-120

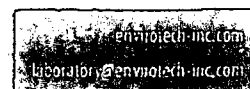
Partial or incomplete reproduction of this report is prohibited, unless approved by Envirotech, Inc.

5796 US Highway 64, Farmington, NM 87401

Ph (505) 632-0615 Fx (505) 632-1865

Three Springs - 65 Mercado Street, Suite 115, Durango, CO 81301

Ph (970) 259-0615 Fx (800) 362-1879





Logos Operating, LLC
PO Box 18
Flora Vista NM, 87415

Project Name: Conf. Sampling- NCRA State #7A Pit Closure
Project Number: 12035-0024
Project Manager: Tiffany McIntosh

Reported:
12-Aug-13 11:52

Cation/Anion Analysis - Quality Control

Envirotech Analytical Laboratory

Analyte	Result	Reporting Limit	Units	Spike Level	Source Result	%REC Limits	RPD	RPD Limit	Notes
---------	--------	--------------------	-------	----------------	------------------	----------------	-----	--------------	-------

Batch 1332008 - Anion Extraction EPA 300.0

Blank (1332008-BLK1)

Prepared & Analyzed: 06-Aug-13

Chloride ND 9.99 mg/kg

Duplicate (1332008-DUP1)

Source: P308013-01

Prepared & Analyzed: 06-Aug-13

Chloride 128 9.99 mg/kg 120 6.02 30

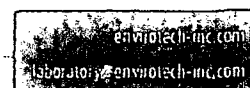
Partial or incomplete reproduction of this report is prohibited, unless approved by Envirotech, Inc.

5796 US Highway 64, Farmington, NM 87401

Three Springs - 65 Mercado Street, Suite 115, Durango, CO 81301

Ph (505) 632-0615 Fx (505) 632-1865

Ph (970) 259-0615 Fr (800) 362-1879





Logos Operating, LLC
PO Box 18
Flora Vista NM, 87415

Project Name: Conf. Sampling- NCRA State #7A Pit Closure
Project Number: 12035-0024
Project Manager: Tiffany McIntosh

Reported:
12-Aug-13 11:52

Notes and Definitions

DET Analyte DETECTED
ND Analyte NOT DETECTED at or above the reporting limit
NR Not Reported
dry Sample results reported on a dry weight basis
RPD Relative Percent Difference

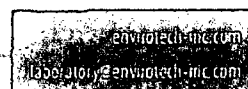
Partial or incomplete reproduction of this report is prohibited, unless approved by Envirotech, Inc

5796 US Highway 64, Farmington NM 87401

Three Springs - 65 Mercado Street, Suite 115, Durango, CO 81301

Ph (505) 632-0615 Fx (505) 632-1865

Ph (970) 259-0615 Fx (800) 362-1879



CHAIN OF CUSTODY RECORD

15924

Page 9 of 9

Client: <u>Logo Operating</u>			Project Name / Location: <u>NCR A state #7A</u>			ANALYSIS / PARAMETERS																
Email results to: <u>Tiffany / Isaac</u>			Sampler Name: <u>Isaac</u>			TPH (Method 8015)	BTEX (Method 8021)	VOC (Method 8260)	RCRA 8 Metals	Cation / Anion	RCI	TCLP with H/P	CO Table 910-1	TPH (418.1)	CHLORIDE			Sample Cool	Sample Intact			
Client Phone No.:			Client No.: <u>12035-0024</u>																			
Sample No. / Identification	Sample Date	Sample Time	Lab No.	No./Volume of Containers	Preservative																	
					HNO ₃	HCl	Cool															
<u>7A</u>	<u>8/5</u>	<u>13:50</u>	<u>P308013-01</u>	<u>1-4oz</u>			<u>X</u>	<u>X</u>	<u>X</u>										<u>X</u>	<u>X</u>	<u>✓</u>	<u>✓</u>
Relinquished by: (Signature) <u>[Signature]</u>				Date	Time	Received by: (Signature) <u>[Signature]</u>				Date	Time											
				<u>8/5</u>	<u>15:30</u>					<u>8/5/13</u>	<u>1550</u>											
Relinquished by: (Signature)						Received by: (Signature)																
Sample Matrix																						
Soil <input type="checkbox"/> Solid <input type="checkbox"/> Sludge <input checked="" type="checkbox"/> Aqueous <input type="checkbox"/> Other <input type="checkbox"/>																						
<input type="checkbox"/> Sample(s) dropped off after hours to secure drop off area.																						



Submit To Appropriate District Office Two Copies District I 1625 N. French Dr., Hobbs, NM 88240 District II 811 S. First St., Artesia, NM 88210 District III 1000 Rio Brazos Rd., Aztec, NM 87410 District IV 1220 S. St. Francis Dr., Santa Fe, NM 87505		State of New Mexico Energy, Minerals and Natural Resources Oil Conservation Division 1220 South St. Francis Dr. Santa Fe, NM 87505		Form C-105 Revised August 1, 2011	
		1. WELL API NO. 30-039-31181			
		2. Type of Lease <input checked="" type="checkbox"/> STATE <input type="checkbox"/> FEE <input type="checkbox"/> FED/INDIAN			
		3. State Oil & Gas Lease No. E-1207			
WELL COMPLETION OR RECOMPLETION REPORT AND LOG					
4. Reason for filing: <input type="checkbox"/> COMPLETION REPORT (Fill in boxes #1 through #31 for State and Fee wells only) <input checked="" type="checkbox"/> C-144 CLOSURE ATTACHMENT (Fill in boxes #1 through #9, #15 Date Rig Released and #32 and/or #33; attach this and the plat to the C-144 closure report in accordance with 19.15.17.13.K NMAC)				5. Lease Name or Unit Agreement Name NCRA STATE	
				6. Well Number: 7A	
7. Type of Completion: <input checked="" type="checkbox"/> NEW WELL <input type="checkbox"/> WORKOVER <input type="checkbox"/> DEEPENING <input type="checkbox"/> PLUGBACK <input type="checkbox"/> DIFFERENT RESERVOIR <input type="checkbox"/> OTHER					
8. Name of Operator LOGOS OPERATING LLC				9. OGRID 289408	
10. Address of Operator 4001 North Butler Avenue, Building 7101 Farmington, NM 87401				11. Pool name or Wildcat	
12. Location	Unit Ltr	Section	Township	Range	Lot
Surface:					
BH:					
13. Date Spudded	14. Date T.D. Reached	15. Date Rig Released 05/22/13		16. Date Completed (Ready to Produce)	
17. Elevations (DF and RKB, RT, GR, etc.)					
18. Total Measured Depth of Well		19. Plug Back Measured Depth		20. Was Directional Survey Made?	
				21. Type Electric and Other Logs Run	
22. Producing Interval(s), of this completion - Top, Bottom, Name					
23. CASING RECORD (Report all strings set in well)					
CASING SIZE	WEIGHT LB./FT.	DEPTH SET	HOLE SIZE	CEMENTING RECORD	AMOUNT PULLED
24. LINER RECORD					
SIZE	TOP	BOTTOM	SACKS CEMENT	SCREEN	25. TUBING RECORD
					SIZE
					DEPTH SET
					PACKER SET
26. Perforation record (interval, size, and number)					
27. ACID, SHOT, FRACTURE, CEMENT, SQUEEZE, ETC.					
DEPTH INTERVAL			AMOUNT AND KIND MATERIAL USED		
28. PRODUCTION					
Date First Production		Production Method (Flowing, gas lift, pumping - Size and type pump)			Well Status (Prod. or Shut-in)
Date of Test	Hours Tested	Choke Size	Prod'n For Test Period	Oil - Bbl	Gas - MCF
Flow Tubing Press.	Casing Pressure	Calculated 24-Hour Rate	Oil - Bbl.	Gas - MCF	Water - Bbl.
29. Disposition of Gas (Sold, used for fuel, vented, etc.)					30. Test Witnessed By
31. List Attachments					
32. If a temporary pit was used at the well, attach a plat with the location of the temporary pit.					
33. If an on-site burial was used at the well, report the exact location of the on-site burial:					
Latitude 36.316702N Longitude 107.466932W NAD 1927 1983X					
I hereby certify that the information shown on both sides of this form is true and complete to the best of my knowledge and belief					
Signature <i>Jamie Goodwin</i>		Printed Name Jamie Goodwin		Title Regulatory Tech.	
E-mail Address JGoodwin@logosoperating.com				Date 10/1/14	



Pit Closure Form:

Date: 2/18/14

Well Name: NCRA STATE #7A

Footages: 1181' FNL & 666 FEL Unit Letter: A

Section: 16, T-24N, R-06W, County: RIO ARRIBA State: NM

Contractor Closing Pit: WSS

Construction Inspector: _____

Inspector Signature: Wayne Pt

Date: 2/18/14

Jamie Goodwin

From: Tamra Sessions
Sent: Thursday, January 23, 2014 7:02 AM
To: Jonathan Kelly (jonathan.kelly@state.nm.us)
Cc: brandon.powell@state.nm.us; Wayne Ritter; Kristina Graham
Subject: NCRA State 7A_Pit Closure 72hr Notice

Logos Operating plans to start the pit closure process on Monday 1/27/14 for the following well.
Please contact Wayne Ritter at 505-320-0436 for any questions or concerns. Thank you.

*NCRA State 7A
API 30-039-31181
A – Sec 16 – T24N – R06W*

Tamra Sessions
Logos Resources, LLC
Operations Technician
tsessions@logosresourcesllc.com
505-330-9333



Reclamation Form:

Date: 8/23/14

Well Name: NCRA STATE #7A

Footages: 1181' FNL & 666' FEL Unit Letter: A

Section: 16, T-24N, R-06W, County: RIO ARRIA State: NM

Reclamation Contractor: ACE

Reclamation Start Date: 4/13/14

Reclamation Complete Date: 5/14

Road Completion Date: 5/14

Seeding Date: Fall 2014

PIT MARKER STATUS

(When Required) Picture of Marker set needed

Date Marker Placed: 8/23/14

Latitude: 36.316702 N

Longitude: 107.466932 W

Date Pit Manifold Removed: N/A

Construction Inspector Signature: Wayne B.

Date Inspected: 8/23/14

10009

10009

SEC. 16

R6W

LOGOS OPERATING, LLC

NCRA #7A

API #30-039-31181

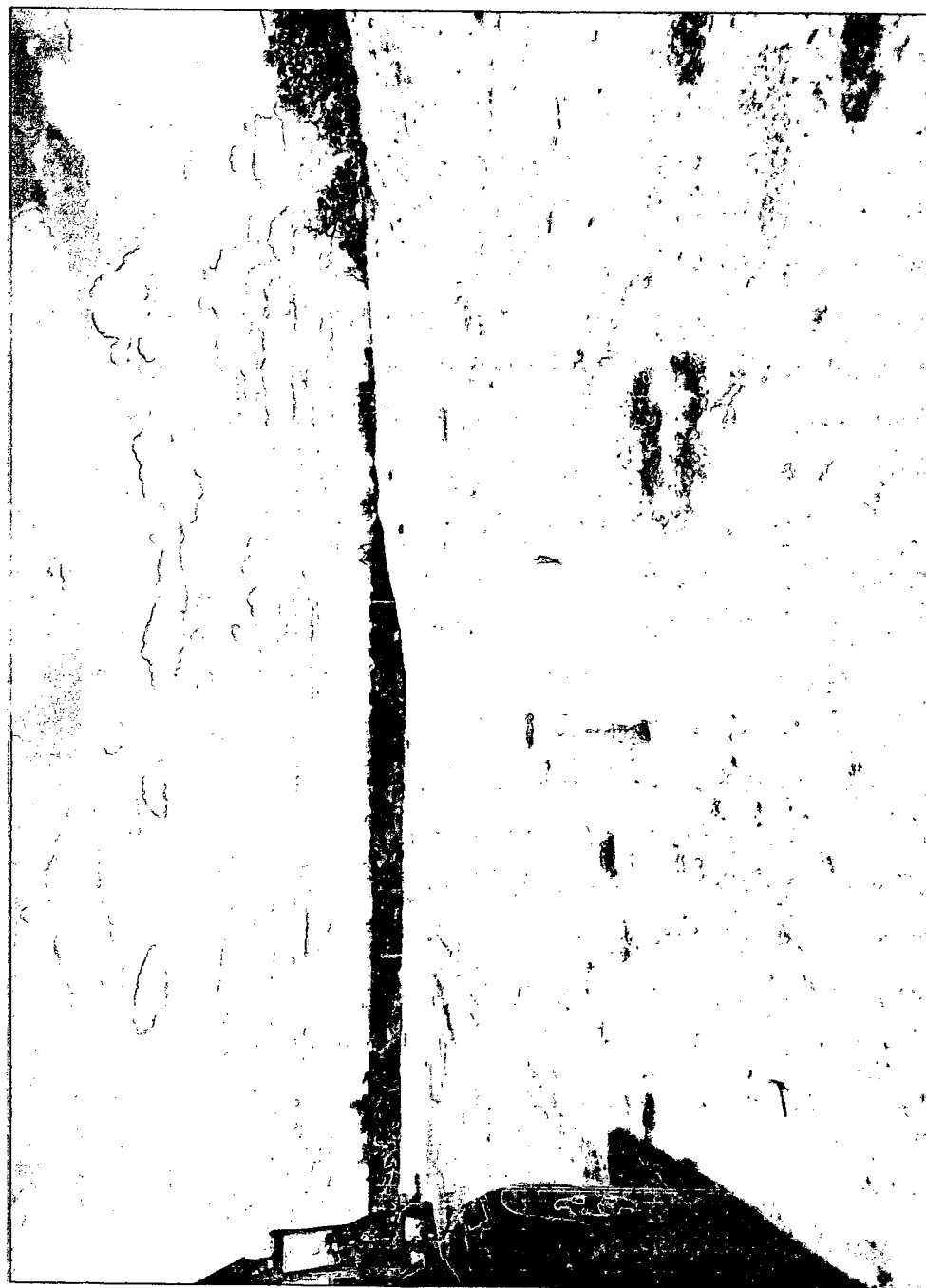
1181' FNL 666' FEL

A-SEC. 16-T24N-R6W

RIO ARRIBA COUNTY, NM

OFFICE # 505-436-2627

AFTER HRS # 866-598 6220



Temporary Pit Weekly Inspection Form

WELL NAME:	NCRA STATE 7A		API NO:	30-039-31181
LEGAL:	Section:	16	Township:	24N
Drilling RD Date:	5/22/2013			

Inspector's Name	Wayne Ritter	Wayne Ritter	Wayne Ritter	Wayne Ritter	Wayne Ritter	Wayne Ritter	Wayne Ritter	Wayne Ritter	Wayne Ritter	Wayne Ritter	Wayne Ritter	Wayne Ritter
WEEK #	1	2	3	4	5	6	7	8	9	10	11	12
DATE	05/22/13	05/28/13	06/04/13	06/12/13	06/20/13	06/25/13	07/03/13	07/10/13	07/17/13	07/26/13	07/31/13	08/07/13
Well sign on location (Y/N)	Y	Y	Y	Y	Y	Y	Y	Y	Y	Y	Y	Y
Any liner breeches (Y/N)	N	N	N	N	N	N	N	N	N	N	N	N
Any fluid seeps/spills (Y/N)	N	N	N	N	N	N	N	N	N	N	N	N
HC's on top of temp. pit (Y/N)	N	N	N	N	N	N	N	N	N	N	N	N
Temp pit free of misc. Solid Waste/Debris(Y/N)	N	Y	N	N	N	N	N	N	N	N	N	N
Discharge Line Integrity Good (Y/N)	N/A	N/A	N/A	N/A	N/A	N/A	N/A	N/A	N/A	N/A	N/A	N/A
Fence Integrity Good (Y/N)	Y	Y	Y	Y	Y	Y	Y	Y	Y	Y	Y	Y
Any Dead Wildlife/Stock (Y/N)	N	N	N	N	N	N	N	N	N	N	N	N
Freeboard to be 2' or > Est. (ft)	3'	3'	3'+	3'+	3'+	3'+	3'+	3'+	3'+	3'+	3'+	3'
Was the OCD contacted (Y/N)	N	N/A	N/A	N/A	N/A	N/A	N/A	N/A	N/A	N/A	N/A	N/A
Pictures taken (Y/N)	N	N	N	N	N	N	N	N	N	N	N	N
Comments:	N/A		Trash in pit	Float - Hard Hat??	Trash same/setting up for frac	Trash same/Flowba ck crew	Trash same	Float - Hard hat??	Hard hat	Trash Same	Hard Hat	Trash Same

Temporary Pit Weekly Inspection Form

WELL NAME:	NCRA STATE 7A		API NO:	30-039-31181	
LEGALS:	Section:	16	Township:	24N	Range: 6W
Drilling RD Date:	5/22/2013				

Inspector's Name	Wayne Ritter	Wayne Ritter	Wayne Ritter	Wayne Ritter	Wayne Ritter	Wayne Ritter	Wayne Ritter	Wayne Ritter	Ramsey Hatalie	Wayne Ritter	Ramsey Hatalie	Ramsey Hatalie
WEEK #	13	14	15	16	17	18	19	20	21	22	23	24
DATE	08/14/13	08/21/13	08/28/13	09/04/13	09/10/13	09/17/13	09/19/13	09/24/13	09/30/13	10/04/13	10/14/13	10/21/13
Well sign on location (Y/N)	Y	Y	Y	Y	Y	Y	Y	Y	Y	Y	Y	Y
Any liner breeches (Y/N)	N	N	N	N	N	N	N	N	N	N	N	N
Any fluid seeps/spills (Y/N)	N	N	N	N	N	N	N	N	N	N	N	N
HC's on top of temp. pit (Y/N)	N	N	N	N	N	N	N	N	N	N	N	N
Temp pit free of misc. Solid Waste/Debris(Y/N)	N	N	N	N	N	N	N	N	N	N	N	N
Discharge Line Integrity Good (Y/N)	N/A	N/A	N/A	N/A	N/A	N/A	N/A	N/A	N/A	N/A	N/A	N/A
Fence Integrity Good (Y/N)	Y	Y	Y	Y	Y	Y	Y	Y	Y	Y	Y	Y
Any Dead Wildlife/Stock (Y/N)	N	N	N	N	N	N	N	N	N	N	N	N
Freeboard to be 2' or > Est. (ft)	3'	3'	3'	3'	3'	3'	3'+	3'+	3'	3'	3'	3'
Was the OCD contacted (Y/N)	N/A	N/A	N/A	N/A	N/A	N/A	N/A	N/A	N/A	N/A	N/A	N/A
Pictures taken (Y/N)	N	N	N	N	N	N	N	N	N	N	N	N
Comments:	Floating Trash	Hard Hat	Trash Same	Trash Same	Hard Hat floating	Trash	Trash Same/J.K called on trash/we could not reach	Hard Hat	Rain Water/Mud/Trash/Hard Hat in Pit	Hard Hat	Trash/Hard Hat in pit/No load & Unload	Hard Hat/No load & unload/Flowback & mud in Pit

Temporary Pit Weekly Inspection Form

WELL NAME:	NCRA STATE 7A		API NO:	30-039-31181	
LEGALS:	Section:	16	Township:	24N	Range: 6W
Drilling RD Date:	5/22/2013				

Inspector's Name	Ramsey Hatalie	Ramsey Hatalie	Ramsey Hatalie	Ramsey Hatalie	Ramsey Hatalie	Ramsey Hatalie	Ramsey Hatalie	Ramsey Hatalie	Ramsey Hatalie	Ramsey Hatalie	Ramsey Hatalie	Ramsey Hatalie
WEEK #	25	26	27	28	29	30	31	32	33	34	35	36
DATE	10/28/13	11/04/13	11/11/13	11/18/13	11/28/13	12/02/13	12/09/13	12/16/13	01/03/14	01/04/14	01/07/14	01/14/14
Well sign on location (Y/N)	Y	Y	Y	Y	Y	Y	Y	Y	Y	Y	Y	Y
Any liner breeches (Y/N)	N	N	N	N	N	N	N	N	N	N	N	N
Any fluid seeps/spills (Y/N)	N	N	N	N	N	N	N	N	N	N	N	N
HC's on top of temp. pit (Y/N)	N	N	N	N	N	N	N	N	N	N	N	N
Temp pit free of misc. Solid Waste/Debris(Y/N)	N	N	N	N	N	N	Y	Y	Y	Y	Y	Y
Discharge Line Integrity Good (Y/N)	N/A	N/A	N/A	N/A	N/A	N/A	N/A	N/A	N/A	N/A	N/A	N/A
Fence Integrity Good (Y/N)	Y	Y	Y	Y	Y	Y	Y	Y	Y	N	Y	Y
Any Dead Wildlife/Stock (Y/N)	N	N	N	N	N	N	N	N	N	N	N	N
Freeboard to be 2' or > Est. (ft)	3'	3'	3 1/2'	3'	3'	3'	4'	3'	4'	N	5'	5'
Was the OCD contacted (Y/N)	N/A	N/A	N/A	N/A	N/A	N/A	N	N	N	N	N	N
Pictures taken (Y/N)	N	N	N	N	N	N	Y	Y	Y	Y	Y	Y
Comments:	Hard Hat/No discharge Line/Flowback Mud still in the Pit	Hard Hat	Hard Hat	Hard Hat	Hard Hat	Hard Hat	N/A	N/A	N/A	Crew backfilling the pit/Mixing dirt w/mud	N/A	N/A

Temporary Pit Weekly Inspection Form

WELL NAME:	NCRA STATE 7A		API NO:	30-039-31181	
LEGALS:	Section:	16	Township:	24N	Range: 6W
Drilling RD Date:	5/22/2013				

Inspector's Name	Ramsey Hatalie	Ramsey Hatalie	Ramsey Hatalie	Ramsey Hatalie	Ramsey Hatalie	Ramsey Hatalie	Ramsey Hatalie					
WEEK #	37	38	39	40	41	42	43	44	45	46	47	48
DATE	01/26/14	02/14/14	03/13/14	03/25/14	04/01/14	04/13/14	04/21/14					
Well sign on location (Y/N)	Y	Y	Y	Y	Y	Y	Y					
Any liner breeches (Y/N)	N	N	N	N	N	N	N					
Any fluid seeps/spills (Y/N)	N	N	N	N	N	N	N					
HC's on top of temp. pit (Y/N)	N	N	N	N	N	N	N					
Temp pit free of misc. Solid												
Waste/Debris(Y/N)	Y	N	N	N	N	N	N					
Discharge Line Integrity Good (Y/N)	N/A	N/A	N/A	N/A	N/A	N/A	N/A					
Fence Integrity Good (Y/N)	Y	N	N	N	N	N	N					
Any Dead Wildlife/ Stock (Y/N)	N	N	N	N	N	N	N					
Freeboard to be 2' or > Est. (ft)	4'	N	N	N	N	N	N					
Was the OCD contacted (Y/N)	N/A	N/A	N/A	N/A	N/A	N/A	N					
Pictures taken (Y/N)	Y	Y	Y	Y	Y	Y	Y					
Comments:	N/A	Pit has backfill	N/A	backfill complete	Pit completed	Completion pit back finish	Completion					



4001 N. Butler Ave
Farmington, NM 87401
Phone: (505) 436-2627
Fax: (505) 832-3095

Date: October 24, 2014

To: NMOCD

Re: Closure Permit #12251
NCRA State 7A
API 30-039-31181

Dear NMOCD,

Logos Operating, LLC (289408) has reviewed their information regarding your email request dated 10/20/14 for general issues encountered on our submitted closure report.

- Closure Date Exceeds 6 months from Rig Release Date. Part 4 of Closure Report needs to reflect the exceedance and note what measures will be taken in the future to prevent re-occurrence. I was unable to find any NMOCD approved Closure Extension for any of the wells, please include with revisions if you have an email, must be in writing.
 - NCRA State 7A rig release date was 2/18/14, and the pit was closed on 2/22/14 which meets the closure time frame. (See attached emails and extention)

Regards,

A handwritten signature in black ink that reads 'Jamie Goodwin'.

Jamie Goodwin
Regulatory Technician

**Logos Operating, LLC
San Juan Basin
Closure Report**

OCT 27 2014

**Lease Name: NCRA State 7A
API NO: 30-039-31181**

In accordance with Rule 19.15.17.12 NMAC the following information describes the closure requirements of temporary pits on Logos Operating, LLC (Logos) locations. This is Logos' standard procedure for all temporary pits. A Separate plan will be submitted for any temporary pit that does not conform to this plan.

All closure activities will include proper documentation and be available for review upon request and will be submitted to OCD within 60 days of the pit closure. Closure report will be filed on C-144 and incorporated the following:

- Detail on Capping and Covering, where applicable **(See report)**
- Plot Plan (Pit diagram) **(Included as an attachment)**
- Inspection reports **(Included as an attachment)**
- Sampling Results **(Included as an attachment)**
- C-105 **(Included as an attachment)**
- Copy of Deed Notice will be filed with County Clerk **(Not required on Federal, State or Tribal land as stated by FAQ dated October 30, 2008)**

General Plan

- 1 All free standing liquids will be removed at the start of the pit closure process from the pit and disposed of in a division-approved facility or recycle, reuse or reclaim the liquids in a manner that the appropriate division district office approves.

All recovered liquids were disposed of at Basin Disposal (permit #NM-01-005) and any sludge or soil required to be removed to facilitate closure was hauled to Envirotech Land Farm (Permit #NM-01-011) and JFJ Landfarm % IEI (Permit #NM-01-0010B).

- 2 The preferred method of closure for all temporary pits will be on-site burial, assuming that all criteria listed in sub-section (D) of 19.15.17.13 are met.

The pit was closed using onsite burial.

- 3 The surface owner shall be notified of Logos proposed closure plan using a means that provides proof of notice i.e., certified mail, return receipt requested.

The closure process notification to the landowner was sent via email. (See attached) (Well located on Federal Land/STATE LAND, certified mail is not required for Federal Land per BLM/OCD).

***Due to confusion on surface owner notification for State land, only the NMOCD was notified. In the future the State Land Office will be notified where the State is the surface owner.**

***Variance Explanation: Rule 19.15.17.13 E. If the surface owner is a public entity (BLM/State/Tribal) then an email notification will be sent, of plans to close the temporary pit at least 72 hours, but no more than 1 week, prior to any closure operation. The notice will include the well name, API number, and location.**

- 4 Within 6 months of the Rig Off status occurring Logos will ensure that temporary pits are closed, re-contoured, and reseeded.

The closure plan requirements were met due to rig move off date as noted on C-105. (See attached). Pit Extensions: Pit extension approved until 2/22/14. (Closed 2/18/2014)

- 5 Notice of Closure will be given to the Aztec Division office between 72 hours and one week of closure via email, or verbally, The notification of closure will include the following:
 - i. Operator's name
 - ii. Location by Unit Letter, Section, Township, and Range. Well name and API Number

Notification is attached.

- 6 Pit contents shall be mixed with non-waste containing, earthen material in order to achieve the solidification process. The solidification process will be accomplished using a combination of natural drying and mechanically mixing. Pit contents will be mixed with non-waste, earthen material to a consistency that is deemed a safe and stable. The mixing ratio shall not exceed 3 parts clean soil to 1 part pit contents.

Logos mixed the pit contents with non-waste containing, earthen material in order to achieve the solidification process. The solidification process was accomplished by using a combination of natural drying and mechanically mixing. Pit contents were mixed with non-waste, earthen material to a consistency that is deemed as safe and stable. The mixing ratio consisted of not more than 3 parts clean soil to 1 part pit contents.

- 7 A five point composite sample will be taken of the pit using sampling tools and all samples tested per 19.15.17.13(D)(5). In the event that the criteria are not met, all contents will be handled per 9.15.17.13(D)(7) i.e., Dig and haul.

A five point composite sample was taken of the pit using sampling tools and all samples tested per 19.15.17.13(D)(5). (Sample results attached).

Components	Tests Method	Limit (mg/Kg)	Results (ppm)
Benzene	EPA SW-846 8021B or 8015M	10	SEE
BTEX	EPA SW-846 8021B or 8260B	50	ATTACHED
TPH	EPA SW-846 418.1	2500	
GRO/DRO	EPA SW-846 8015M	r 1000	
Chlorides	EPA 300.0	80000	

- 8 Upon completion of solidification and testing, Logos will fold the outer edges of the trench liner to overlap the waste material in the pit area, then install a geomembrane cover over the waste material in the pit to prevent collections of infiltration water after the soil cover is in place; geomembrane a 20-mil, string reinforced, LLDPE liner, or equivalent complying with EPA SW-846 method 9090A requirements.

The pit material passed solidification and testing standards. Logos folded the outer edges of the trench liner to overlap the waste material in the pit area, then installed a geomembrane cover over the waste material and folded liner as per 19.15.17.13(8)(a)(b).

- 9 The pit area will be backfilled with compacted, non-waste containing, earthen material. A minimum of four feet of cover shall be achieved and the cover shall include one foot of suitable material to establish vegetation at the site, or the background thickness of topsoil, whichever is greater.

The pit area was then backfilled with compacted, non-waste containing, earthen material. More than four feet of cover was achieved and the cover included one foot of suitable material to establish vegetation at the site.

- 10 Re-contouring of location will match fit, shape, line, form and texture of the surrounding area. Re-shaping will include drainage control, prevent ponding, and prevent erosion. Natural drainages will be unimpeded and water bars and/or silt traps will be placed in areas where needed to prevent erosion on a large scale. Final re-contour shall have a uniform appearance with smooth surface, fitting the natural landscape.

The pit area was re-contoured to match fit, shape, line, form and texture of the surrounding area. Reshaping included drainage control, to prevent ponding and erosion. Natural drainages were unimpeded and water bars and/or silt traps were placed in areas where needed to prevent erosion on a large scale. Final re-contour has a uniform appearance with smooth surface, fitting the natural landscape.

- 11 Notification will be sent to OCD when the reclaimed area is seeded.

Provision 11 was accomplished in accordance with NMOCD 19.15.17.13(5)(d) Notification will be sent to the OCD when re-vegetation is established.

- 12 Logos shall seed the distributed areas the first growing season after the operator closes the pit. Seeding will be accomplished via drilling on the contour whenever practical or by other division-approved methods. BLM or Forest Service stipulated seed mix will be used on federal lands. Vegetative cover will be established that will reflect a life-form ratio of plus or minus fifty percent (50%) of pre-disturbance levels and will equal

seventy (70%) of the native perennial vegetative cover (un-impacted) consisting of at least three native plant species, including at least one grass, but not including noxious weeds, and maintain that cover thorough two successive growing seasons. Repeat seeding or planting will be continued until successful vegetative growth occurs.

Provision 12 was accomplished in accordance with NMOCD 19.15.17.13(5)(d) Notification will be sent to the OCD when re-vegetation is established.

- 13 The temporary pit will be located with a steel marker, no less than four inches in diameter, cemented in a hole three feet deep in the center of the onsite burial. The marker will be flush with the ground to allow access of the active well pad and for safety concerns. The marker will include a threaded collar to be used for future abandonment. The top of the marker will contain a welded steel 12" square plate that indicates the onsite burial of the temporary pit. The plate will be easily removable and a four foot tall riser will be threaded into the top of the collar marker and welded around the base with the operator's information at the time of all wells on the pad are abandoned. The operator's information will include the following: Operator Name, Lease Name, Well Name and number, Unit Number, Section, Township, Range and an indicator that the marker is an onsite burial location.

Provision 13 was accomplished by installing a steel marker in the temporary pit, no less than four inches in diameter, cemented in a hole three feet deep in the center of the onsite burial. The marker is flush with the ground to allow access of the active well pad and for safety concerns. The top of the marker contains a welded steel 12" square plate that indicates the onsite burial of the temporary pit. The plate contains the following: Operator's name, Lease Name, Well Name and number, Unit Number, Section, Township, Range and an indicator that the marker is an onsite burial location.

The plate will be easily removable and a four foot tall riser will be threaded into the top of the collar marker and welded around the base with the following operator's information at the time of all wells on the pad are abandoned. The riser will also indicate that the marker is for an onsite burial location.

Operator Name: Logos
Lease Name & Well Number: NCRA State 7A
Unit Letter: A
Section: 16
Township: 24N
Range: 6W
API#: 30-039-31181
OBL

- 14 Logos inspected and documented daily and weekly reports on the above Temporary Pit. Logos inspected any liner breaches, fluid seeps or spills, HC's on top of temporary pit, free of miscellaneous solid waste or debris, discharge line integrity, fence integrity, any dead wildlife or livestock and inspection of the freeboard. Logos will provide maintained documentation of inspections upon request.

Inspection Start Date: 5/16/13

Inspection End Date: 4/21/14

NOTE: During start and end dates of temporary pit inspections no issues found.

State of New Mexico
Energy, Minerals and Natural Resources

Form C-103
Revised August 1, 2011

District I - (575) 393-6161
625 N. French Dr., Hobbs, NM 88240
District II - (575) 748-1283
811 S. First St., Artesia, NM 88210
District III - (505) 334-6178
1000 Rio Brazos Rd., Aztec, NM 87410
District IV - (505) 476-3460
1220 S. St. Francis Dr., Santa Fe, NM
87505

OIL CONSERVATION DIVISION
1220 South St. Francis Dr.
Santa Fe, NM 87505

WELL API NO. 30-039-31181
5. Indicate Type of Lease STATE <input checked="" type="checkbox"/> FEE <input type="checkbox"/>
6. State Oil & Gas Lease No. E-1207
7. Lease Name or Unit Agreement Name NCRA State
8. Well Number 7A
9. OGRID Number 289408
10. Pool name or Wildcat Devils Fork Gallup

SUNDRY NOTICES AND REPORTS ON WELLS (DO NOT USE THIS FORM FOR PROPOSALS TO DRILL OR TO DEEPEN OR PLUG BACK TO A DIFFERENT RESERVOIR. USE "APPLICATION FOR PERMIT" (FORM C-101) FOR SUCH PROPOSALS.)	
1. Type of Well: Oil Well <input checked="" type="checkbox"/> Gas Well <input type="checkbox"/> Other <input type="checkbox"/>	
2. Name of Operator Logos Operating, LLC	
3. Address of Operator 4001 North Butler Ave, Bldg 7101, Farmington, NM 87401	
4. Well Location Unit Letter <u>A</u> : <u>1181</u> feet from the <u>N</u> line and <u>666</u> feet from the <u>E</u> line Section <u>16</u> Township <u>24N</u> Range <u>6W</u> NMPM County <u>Rio Arriba</u>	
11. Elevation (Show whether DR, RKB, RT, GR, etc.) <u>6697' GL</u>	

12. Check Appropriate Box to Indicate Nature of Notice, Report or Other Data

NOTICE OF INTENTION TO:

PERFORM REMEDIAL WORK ☐ PLUG AND ABANDON ☐
 TEMPORARILY ABANDON ☐ CHANGE PLANS ☐
 PULL OR ALTER CASING ☐ MULTIPLE COMPL ☐
 DOWNHOLE COMMINGLE ☐

OTHER: ☒ Pit Closure Extension

SUBSEQUENT REPORT OF:

REMEDIAL WORK ☐ ALTERING CASING ☐
 COMMENCE DRILLING OPNS. ☐ P AND A ☐
 GASING/CEMENT JOB ☐

OTHER: ☐

13. Describe proposed or completed operations. (Clearly state all pertinent details, and give pertinent dates, including estimated date of starting any proposed work). SEE RULE 19.15.7.14 NMAC. For Multiple Completions: Attach wellbore diagram of proposed completion or recompletion.

Logos Operating is requesting a pit closure extension of three months. Due to large amount of drilling mud and seasonal rains/snow and therefore to allow solidification, removal of pit contents will be required to aid in creating additional room to accommodate the minimum of 4' cover which includes the topsoil cover.

Drilling rig release date was 5/22/13 and the six month closure date is 11/22/13. The pit closure extension will end on 2/22/14.

OIL CONS. DIV DIST. 3

DEC 17 2013

Spud Date:

Rig Release Date:

I hereby certify that the information above is true and complete to the best of my knowledge and belief.

SIGNATURE Tamra Sessions

TITLE Operations Tech

DATE 12/03/13

Type or print name Tamra Sessions

E-mail address: tsessions@logosresourcesllc.com

PHONE: 505-330-9333

For State Use Only

APPROVED BY: [Signature]

TITLE

DATE 1/7/14

Conditions of Approval (if any):

Tamra Sessions

From: Tamra Sessions
Sent: Tuesday, January 7, 2014 9:28 AM
To: Powell, Brandon, EMNRD
Cc: Kelly, Jonathan, EMNRD
Subject: RE: Pit Closure Extension NCRA State 7A

Brandon, I was checking to see where we are at on getting approval for the closure extension. I had resubmitted the sundry with the revised wording on 12/17/13. Please let me know if there is something further you need. Thank you!

Tamra
505-330-9333

From: Powell, Brandon, EMNRD [mailto:Brandon.Powell@state.nm.us]
Sent: Thursday, December 12, 2013 11:46 AM
To: Tamra Sessions
Cc: Kelly, Jonathan, EMNRD; David Gonzales; Wayne Ritter; Perrin, Charlie, EMNRD
Subject: RE: Pit Closure Extension NCRA State 7A

Tamra-

A few clarifications and requests.

The pit closure extension filed stated the extension was to facilitate additional evaporation; since this incorrect **please resubmit the closure extension with an accurate description**. Please be advised that additional time to evaluate the pit will not be an acceptable reason to extend pit closures in the future as the initial six months should be sufficient time to evaluate the pit contents. The extension process is to accommodate unforeseen circumstances. Please also note an extension can only be approved once per pit for a period of three months. If this pit is still open after the 2/22/14 deadline it will be out of compliance and enforcement action can be taken. Based off of the free board level of 3 feet it appears material may need to be removed from the pit to accommodate the 4 feet of cover so please plan accordingly.

Because this pit is in violation with rules 19.15.17.13.G(2) and 19.15.5.11 please perform an assessment of all Logos' open pits to ensure they are in compliance. If any are found out of compliance please provide a list and their violations so they can be handled as part of a single audit instead of separate continuous violations.

Thank You
Brandon Powell
I & E Supervisor
New Mexico Oil Conservation
Office: (505) 334-6178 ext. 116

"He who wishes to gain knowledge is wiser than he who thinks he has knowledge (unknown)"

From: Tamra Sessions [mailto:tsessions@logosresourcesllc.com]
Sent: Wednesday, December 11, 2013 3:13 PM
To: Powell, Brandon, EMNRD
Cc: Kelly, Jonathan, EMNRD; David Gonzales; Wayne Ritter
Subject: RE: Pit Closure Extension NCRA State 7A

No, not necessarily more evaporation. The weather has played a big factor with rain and snow keeping moisture in the pit contents after they started drying out, and now dealing with the freeze. We are looking for a little more time to evaluate the 7A pit contents so we can determine how to handle so we can get the pit closed.

Tamra

505-330-9333

From: Powell, Brandon, EMNRD [<mailto:Brandon.Powell@state.nm.us>]

Sent: Wednesday, December 11, 2013 2:24 PM

To: Tamra Sessions

Cc: Kelly, Jonathan, EMNRD

Subject: RE: Pit Closure Extension NCRA State 7A

Tamra-

Based on the freeboard levels in the inspection log it doesn't appear there has been much evaporation. Is Logos expecting much more evaporation in the winter months?

Thank You

Brandon Powell

I & E Supervisor

New Mexico Oil Conservation

Office: (505) 334-6178 ext. 116

"He who wishes to gain knowledge is wiser than he who thinks he has knowledge (unknown)"

From: Tamra Sessions [<mailto:tsessions@logosresourcesllc.com>]

Sent: Wednesday, December 11, 2013 1:59 PM

To: Powell, Brandon, EMNRD

Cc: Wayne Ritter; David Gonzales

Subject: RE: Pit Closure Extension NCRA State 7A

Brandon, in reply to the free liquid removal: the pit contents did not contain a sufficient amount of removable free liquids.. The drilling mud is the majority of the contents. Any excess liquid had been evaporating off due to high temperatures through the summer and fall.

Please see the attached pit inspection logs. Please let me know if there is anything else you need.

Thank you,

Tamra

505-330-9333

From: Powell, Brandon, EMNRD [<mailto:Brandon.Powell@state.nm.us>]

Sent: Tuesday, December 10, 2013 4:02 PM

To: Tamra Sessions

Subject: Pit Closure Extension

Tamra-

Good afternoon

To process the Pit Closure Extension request for the NCRA State #7A API#30-039-31181 we need some additional information.

- Provide when all the free liquids were removed from the temporary pit as required by item 14 of Logos' Maintenance and Operating plan.
- Provide a copy of the log performed in accordance with item 12 of Logos' Maintenance and Operating plan.

Please also be advised that Logos violated rule 19.15.17.13.G(2) and 19.15.5.11 by not requesting the extension prior to the lapse of the six month closure requirement.

Thank You
Brandon Powell
I & E Supervisor
New Mexico Oil Conservation
Office: (505) 334-6178 ext. 116

"He who wishes to gain knowledge is wiser than he who thinks he has knowledge (unknown)"

The information contained in this email and any attachments is confidential and may be subject to copyright or other intellectual property protection. If you are not the intended recipient, you are not authorized to use or disclose this information, and we request that you notify us by reply mail or telephone and delete the original message from your mail system.

The information contained in this email and any attachments is confidential and may be subject to copyright or other intellectual property protection. If you are not the intended recipient, you are not authorized to use or disclose this information, and we request that you notify us by reply mail or telephone and delete the original message from your mail system.