

UNITED STATES
DEPARTMENT OF THE INTERIOR
BUREAU OF LAND MANAGEMENT

OCT 21 2014

FORM APPROVED
OMB No. 1004-0137
Expires: July 31, 2010

SUNDRY NOTICES AND REPORTS ON WELLS
Do not use this form for proposals to drill or to re-enter an abandoned well. Use Form 3160-3 (APD) for such proposals.

5. Lease Serial No.

SF-078278

6. If Indian, Allottee or Tribe Name

SUBMIT IN TRIPLICATE - Other instructions on page 2.

1. Type of Well

☐

Oil Well

☒

Gas Well

☐

Other

OIL CONS. DIV DIST. 3

2. Name of Operator

ConocoPhillips Company

3a. Address

PO Box 4289, Farmington, NM 87499

3b. Phone No. (include area code)

(505) 326-9700

7. If Unit of CA/Agreement, Name and/or No.

San Juan 29-6 Unit

8. Well Name and No.

San Juan 29-6 Unit 247R

9. API Well No.

30-039-25414

10. Field and Pool or Exploratory Area

Basin FC

4. Location of Well (Footage, Sec., T., R., M., or Survey Description)

Surface

UL K (NESW), 2429' FSL & 1338' FWL, Sec. 10, T29N, R6W

11. Country or Parish, State

Rio Arriba

New Mexico

12. CHECK THE APPROPRIATE BOX(ES) TO INDICATE NATURE OF NOTICE, REPORT OR OTHER DATA

TYPE OF SUBMISSION

☒

Notice of Intent

☐

Subsequent Report

☐

Final Abandonment Notice

TYPE OF ACTION

☐

Acidize

☐

Alter Casing

☐

Casing Repair

☐

Change Plans

☐

Convert to Injection

☐

Deepen

☐

Fracture Treat

☐

New Construction

☒

Plug and Abandon

☐

Plug Back

☐

Production (Start/Resume)

☐

Reclamation

☐

Recomplete

☐

Temporarily Abandon

☐

Water Disposal

☐

Water Shut-Off

☐

Well Integrity

☐

Other

13. Describe Proposed or Completed Operation: Clearly state all pertinent details, including estimated starting date of any proposed work and approximate duration thereof.

If the proposal is to deepen directionally or recomplete horizontally, give subsurface locations and measured and true vertical depths of all pertinent markers and zones. Attach the bond under which the work will be performed or provide the Bond No. on file with BLM/BIA. Required subsequent reports must be filed within 30 days following completion of the involved operations. If the operation results in a multiple completion or recompletion in a new interval, a Form 3160-4 must be filed once Testing has been completed. Final Abandonment Notices must be filed only after all requirements, including reclamation, have been completed and the operator has determined that the site is ready for final inspection.)

ConocoPhillips requests permission to P&A the subject well bore per the attached procedure, current & proposed well bore schematics. The Pre P&AA onsite was held on 10/6/14 w/ Bob Switzer. The revegetation plan is attached.

A closed loop system will be utilized for this P&A.

Notify NMOCD 24 hrs
prior to beginning
operations

**SEE ATTACHED FOR
CONDITIONS OF APPROVAL**

**BLM'S APPROVAL OR ACCEPTANCE OF THIS
ACTION DOES NOT RELIEVE THE LESSEE AND
OPERATOR FROM OBTAINING ANY OTHER
AUTHORIZATION REQUIRED FOR OPERATIONS
ON FEDERAL AND INDIAN LANDS**



H₂S POTENTIAL EXIST

14. I hereby certify that the foregoing is true and correct. Name (Printed/Typed)

Kenny Davis

Title **Staff Regulatory Technician**

Signature

Date

10/21/2014

THIS SPACE FOR FEDERAL OR STATE OFFICE USE

Approved by

Troy Salvors

Title

Petroleum Eng.

Date

11/5/2014

Office

FFO

Conditions of approval, if any, are attached. Approval of this notice does not warrant or certify that the applicant holds legal or equitable title to those rights in the subject lease which would entitle the applicant to conduct operations thereon.

Title 18 U.S.C. Section 1001 and Title 43 U.S.C. Section 1212, make it a crime for any person knowingly and willfully to make to any department or agency of the United States any false, fictitious or fraudulent statements or representations as to any matter within its jurisdiction.

NMOCD

ConocoPhillips
SAN JUAN 29-6 UNIT 247R
Expense - P&A

Lat 36° 44' 22.416" N

Long 107° 27' 14.796" W

PROCEDURE

This project requires the use of an A-Plus steel tank to handle waste fluids circulated from the well and cement wash up.

1. Hold pre-job safety meeting. Comply with all NMOCD, BLM, and COPC safety and environmental regulations. Test rig anchors prior to moving in rig. **Notify BLM and NMOCD prior to beginning operations.**
2. MIRU workover rig. Check casing, tubing, and bradenhead pressures and record them in Wellview. **If there is pressure on the BH, contact the Wells Engineer.**
3. Remove existing piping on casing valve. RU blow lines from casing valves and begin blowing down casing pressure. Kill well as necessary. Ensure well is dead or on a vacuum.
4. TOO H w/ rod string and LD (per pertinent data sheet).
Size: 3/4" Set Depth: 3,376 ft
5. ND wellhead and NU BOPE. Pressure and function test BOP to 250 psi low and 1000 psi over SICP high to a maximum of 2000 psi held and charted for 10 minutes as per COP Well Control Manual. PU and remove tubing hanger
6. TOO H with tubing (per pertinent data sheet).
Tubing size: 2-3/8" 4.7# J-55 EUE Set Depth: 3385 ftKB KB: 15 ft
7. PU 6-1/8" bit and watermelon mill and round trip as deep as possible above top of liner @ 3179'.
8. PU CR for 7" OD, 6.366" ID, 23# casing on tubing, and set @ 3169'. Pressure test tubing to 1000 psi. Sting out of CR. Load hole, and pressure test casing to 800 psi. *If casing does not test, then spot or tag subsequent plugs as appropriate.* POOH w/ tubing.
9. RU wireline and run CBL with 500 psi on casing from CR to surface to identify TOC. *Adjust plugs as necessary for new TOC.* Send electronic copies of the CBL to the wells engineer, superintendent, regulatory group, BLM and NMOCD.

~~All cement volumes use 100% excess outside pipe and 50' excess inside pipe. The stabilizing wellbore fluid will be 8.3 ppg, sufficient to balance all exposed formation pressures. All cement will be ASTM Class B mixed at 15.6 ppg with a 1.18 cf/sk yield.~~

See COA

10. Plug 1 (Fruitland, Kirtland, and Ojo Alamo Formation Tops, 2529-3169', 130 Sacks Class B Cement)

Mix 130 sx Class B cement and spot a balanced plug inside the casing to cover the Fruitland, Kirtland, and Ojo Alamo tops. PUH.

See COA

11. Plug 2 (Nacimiento Formation top, 1239-1339', 29 Sacks Class B Cement)

Mix 29 sx Class B cement and spot a balanced plug inside the casing to cover the Nacimiento top. PUH.

12. Plug 3 (Surface Plug, 0-336', 73 Sacks Class B Cement)

Connect the pump line to the bradenhead valve and attempt to pressure test the BH annulus to 300 psi. Note the volume to load. If the BH annulus holds pressure, then establish circulation out casing valve with water. Mix 73 sx Class B cement and spot balanced plug inside casing from 336' to surface, circulating good cement out casing valve. TOO H and LD tubing. SI well and WOC. If the BH annulus does not test, then perforate at the appropriate depth and attempt to circulate cement to surface, filling the casing and the BH annulus to surface. Shut well in and WOC.

13. Nipple down BOP and cut off casing below the casing flange. Install P&A marker with cement to comply with regulations. Rig down, move off location, cut off anchors, and restore location.

Current Schematic

NOV 07 2014

ConocoPhillips

Well Name: SAN JUAN 29-6 UNIT #247R

API Well 3003925414	Surface Leg Location D10-029N-006W-K	Field Name FC	License No.	State Province NEW MEXICO	Well Configuration Type Vertical
Ground Elevation (ft) 6,543.00	Original KS RT Elevation (ft) 6,558.00	KS Ground Distance (ft) 15.00	KS-Casing Hanger Distance (ft) 6,558.00	KS-Tubing Hanger Distance (ft) 6,558.00	

Vertical - Original Hole, 8/26/2014 1:40:38 PM

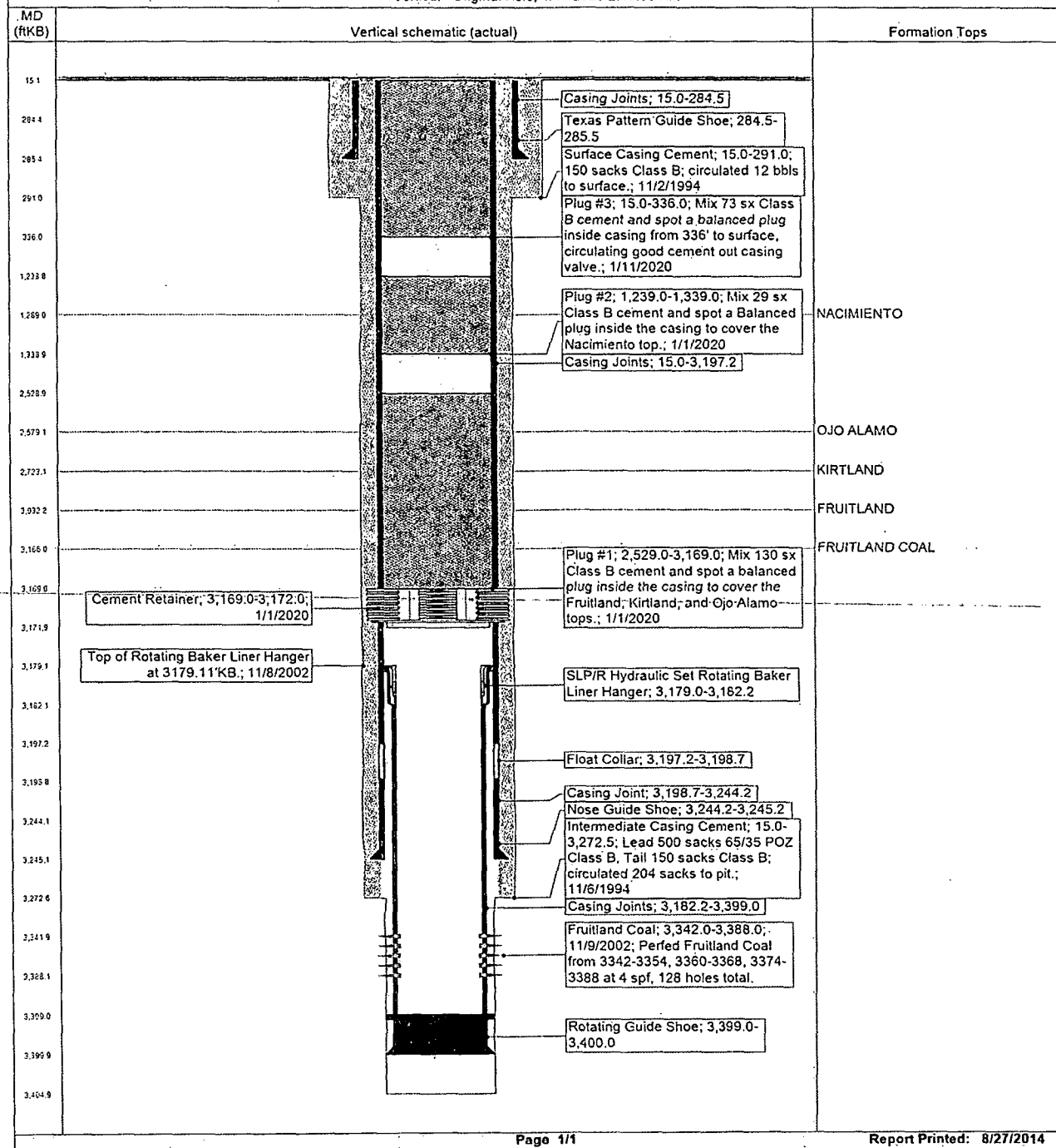
Vertical schematic (actual)	MD (ftKB)	Formation Tops
	0.0	
Polished Rod; 22.00 ft	15.1	
Pony Rod; 16.00 ft	22.0	
	38.1	
1; Surface Casing; 9 5/8 in; 8.921 in; 15.0 ftKB; 285.5 ftKB	284.4	
Surface Casing Cement; 15.0-291.0 11/2/1994	285.4	
	291.0	
Tubing; 2 3/8 in; 4.70 lb/ft; J-55; 15.0 ftKB; 3,331.3 ftKB	1,289.0	NACIMIENTO
Sucker Rod; 3,150.00 ft	2,579.1	OJO ALAMO
	2,723.1	KIRTLAND
	3,032.2	FRUITLAND
	3,168.0	FRUITLAND C...
Top of Rotating Baker Liner Hanger at 3179.11'KB	3,179.1	
	3,182.1	
	3,188.0	
Pony Rod; 16.00 ft	3,197.2	
	3,198.8	
	3,204.1	
2; Intermediate Casing; 7 in; 6.366 in; 15.0 ftKB; 3,245.2 ftKB	3,244.1	
Intermediate Casing Cement; 15.0- 3,272.5; 11/6/1994	3,245.1	
Sinker Bar; 150.00 ft	3,272.6	
Pup Jt; 2 3/8 in; 4.70 lb/ft; J-55; 3,331.3 ftKB; 3,333.2 ftKB	3,331.4	
	3,333.3	
Tubing; 2 3/8 in; 4.70 lb/ft; J-55; 3,333.2 ftKB; 3,364.6 ftKB	3,341.9	
	3,354.0	
F-Nipple; 2 3/8 in; 4.70 lb/ft; J-55; 3,364.6 ftKB; 3,365.4 ftKB	3,354.7	
Fruitland Coal; 3,342.0-3,388.0; 11/9/2002	3,362.5	
Price Gas Anchor W/Weep Hole; 2 3/8 in; 4.70 lb/ft; J-55; 3,365.4 ftKB; 3,375.5 ftKB	3,363.5	
Price type Gas Anchor W/Mule Shoe; 2 3/8 in; 4.70 lb/ft; J-55; 3,375.5 ftKB; 3,365.3 ftKB	3,364.5	
	3,365.5	
	3,375.7	
	3,376.6	
	3,385.5	
	3,388.1	
PBTD; 3,399.0; Top of Rotating Guide Shoe 3399'	3,399.0	
	3,399.9	
3; Production 1; 5 1/2 in; 0.000 in; 3,179.0 ftKB; Assumed a 13'KB since no tally found in wellfile; previous remedials indicate 13'KB; 3,400.0 ftKB	3,404.9	

NOV 07 2014

ConocoPhillips**Proposed_Schematic
SAN JUAN 29-6 UNIT #247R**

District NORTH	Field Name FC	API / UWI 3003925414	County RIO ARRIBA	State/Province NEW MEXICO
Original Spud Date 11/2/1994	Surface Legal Location 010-029N-006W-K	East/West Distance (ft) 1,337.93	East/West Reference FWL	North/South Distance (ft) 2,429.13
				North/South Reference FSL

Vertical - Original Hole, 1/11/2020 2:15:00 AM



UNITED STATES DEPARTMENT OF THE INTERIOR
BUREAU OF LAND MANAGEMENT
FARMINGTON DISTRICT OFFICE
6251 COLLEGE BLVD.
FARMINGTON, NEW MEXICO 87402

Attachment to notice of
Intention to Abandon:

Re: Permanent Abandonment
Well: San Juan 29-6 Unit #247R

CONDITIONS OF APPROVAL

1. Plugging operations authorized are subject to the attached "General Requirements for Permanent Abandonment of Wells on Federal and Indian Lease."
2. Farmington Office is to be notified at least 24 hours before the plugging operations commence (505) 564-7750.
3. The following modifications to your plugging program are to be made:
 - a) Bring the top of plug #1 to 2550 ft. to cover the Fruitland, Kirtland and Ojo Alamo tops. Adjust cement volume accordingly
 - b) Set plug #2 (1363-1263) ft. to cover the Nacimiento top.

Operator will run a CBL to verify cement top. Submit the electronic copy of the log for verification to the following addresses: tsalyers@blm.gov Brandon.Powell@state.nm.us

Note: Low concentrations of H₂S (5ppm GSV) have been reported in the NE/NE of section 3, 29N, 6W.

You are also required to place cement excesses per 4.2 and 4.4 of the attached General Requirements.

Office Hours: 7:45 a.m. to 4:30 p.m.