

UNITED STATES
DEPARTMENT OF THE INTERIOR
BUREAU OF LAND MANAGEMENT

RECEIVED

NOV 10 2014

FORM APPROVED
OMB No. 1004-0137
Expires: July 31, 2010

Farmington Field Office

SF-078863

SUNDRY NOTICES AND REPORTS ON WELLS
Do not use this form for proposals to drill or to re-enter an abandoned well. Use Form 3160-3 (APD) for such proposals.

SUBMIT IN TRIPLICATE - Other instructions on page 2.

1. Type of Well

☐

Oil Well

☒

Gas Well

☐

Other

2. Name of Operator

ConocoPhillips Company

3a. Address

PO Box 4289, Farmington, NM 87499

3b. Phone No. (include area code)

(505) 326-9700

4. Location of Well (Footage, Sec., T., R., M., or Survey Description)

Surface UNIT P (SESE), 790' FSL & 1120' FEL, Sec. 28, T28N, R11W

5. Lease Serial No.

Office

6. Indian Allottee or Tribe Name

7. If Unit of CA/Agreement, Name and/or No.

8. Well Name and No.

Krause WN Federal 2E

9. API Well No.

30-045-24122

10. Field and Pool or Exploratory Area

BASIN DAKOTA

11. Country or Parish, State

San Juan, New Mexico

12. CHECK THE APPROPRIATE BOX(ES) TO INDICATE NATURE OF NOTICE, REPORT OR OTHER DATA

TYPE OF SUBMISSION

☒ Notice of Intent

☐ Subsequent Report

☐ Final Abandonment Notice

TYPE OF ACTION

☐ Acidize

☐ Alter Casing

☐ Casing Repair

☐ Change Plans

☐ Convert to Injection

☐ Deepen

☐ Fracture Treat

☐ New Construction

☒ Plug and Abandon

☐ Plug Back

☐ Production (Start/Resume)

☐ Reclamation

☐ Recomplete

☐ Temporarily Abandon

☐ Water Disposal

☐ Water Shut-Off

☐ Well Integrity

☐ Other

13. Describe Proposed or Completed Operation: Clearly state all pertinent details, including estimated starting date of any proposed work and approximate duration thereof. If the proposal is to deepen directionally or recompleat horizontally, give subsurface locations and measured and true vertical depths of all pertinent markers and zones. Attach the bond under which the work will be performed or provide the Bond No. on file with BLM/BIA. Required subsequent reports must be filed within 30 days following completion of the involved operations. If the operation results in a multiple completion or recompleat in a new interval, a Form 3160-4 must be filed once Testing has been completed. Final Abandonment Notices must be filed only after all requirements, including reclamation, have been completed and the operator has determined that the site is ready for final inspection.)

ConocoPhillips requests permission to P&A this well per the attached procedure, current and proposed wellbore schematics. The Pre-disturbance site visit was conducted on 10/6/14 with Bob Switzer as the BLM representative. The Revegetation Plan is attached. A closed loop system will be utilized with this project.

OIL CONS. DIV DIST. 3



H₂S POTENTIAL EXIST

SEE ATTACHED FOR
CONDITIONS OF APPROVAL

DEC 22 2014

Notify NMOCD 24 hrs
prior to beginning
operations

BLM'S APPROVAL OR ACCEPTANCE OF THIS
ACTION DOES NOT RELIEVE THE LESSEE AND
OPERATOR FROM OBTAINING ANY OTHER
AUTHORIZATION REQUIRED FOR OPERATIONS
ON FEDERAL AND INDIAN LANDS

14. I hereby certify that the foregoing is true and correct. Name (Printed/Typed)

Patsy Clugston

Staff Regulatory Technician

Signature

Patsy Clugston

Date

11/10/2014

THIS SPACE FOR FEDERAL OR STATE OFFICE USE

Approved by

Troy Salvors

Title PE

Date

12/18/2014

Conditions of approval, if any, are attached. Approval of this notice does not warrant or certify that the applicant holds legal or equitable title to those rights in the subject lease which would entitle the applicant to conduct operations thereon.

Office

FFO

Title 18 U.S.C. Section 1001 and Title 43 U.S.C. Section 1212, make it a crime for any person knowingly and willfully to make to any department or agency of the United States any false, fictitious or fraudulent statements or representations as to any matter within its jurisdiction.

(Instruction on page 2)

NMOCD PC

5
B

ConocoPhillips
KRAUSE WN FEDERAL 2E
Expense - P&A

Lat 36° 37' 40.876" N

Long 108° 0' 12.6" W

PROCEDURE

This project requires the use of an A-Plus steel tank to handle waste fluids circulated from the well and cement wash up.

1. Hold pre-job safety meeting. Comply with all NMOCD, BLM, and COPC safety and environmental regulations. Test rig anchors prior to moving in rig. **Before RU, run WL remove downhole equipment. If an obstruction is found, set a locking-3-slip-stop in the tubing.**

2. MIRU workover rig. Check casing, tubing, and bradenhead pressures and record them in Wellview. **If there is pressure on the BH, contact the Wells Engineer.**

3. Remove existing piping on casing valve. RU blow lines from casing valves and begin blowing down casing pressure. Kill well as necessary. Ensure well is dead or on a vacuum.

4. ND wellhead and NU BOPE. Pressure and function test BOP to 250 psi low and 1000 psi over SICP high to a maximum of 2000 psi held and charted for 10 minutes as per COP Well Control Manual. PU and remove tubing hanger

5. TOO H with tubing (per pertinent data sheet).

Tubing size:	2-3/8"	4.7# J-55 EUE	Set Depth:	6168	ftKB	KB:	11	ft
---------------------	--------	---------------	-------------------	------	------	------------	----	----

6. PU 3-7/8" bit and watermelon mill and round trip as deep as possible above CIBP @ 6174'.

7. Pressure test tubing to 1000 psi with WL set tubing plug. Load hole, and pressure test casing to 800 psi. It is expected that the casing will not test due to holes in casing at 4285' and 3595', *tag subsequent plugs as appropriate.* POOH w/ tubing.

All cement tops determined from CBL run on 7/8/14.

All cement volumes use 100% excess outside pipe and 50' excess inside pipe. The stabilizing wellbore fluid will be 8.3 ppg, sufficient to balance all exposed formation pressures. All cement will be ASTM Class B mixed at 15.6 ppg with a 1.18 cf/sk yield.

8. Plug 1 (Perforations, Dakota, Graneros, and Gallup Formation Tops, 6174-5293', 71 Sacks Class B Cement)

Mix 71 sx Class B cement and spot a balanced plug inside the casing to cover the perforations, Dakota, Graneros, and Gallup tops. PUH.

9. Plug 2 (Mancos Formation Tops, 4481-4381', 12 Sacks Class B Cement)

Mix 12 sx Class B cement and spot a balanced plug inside the casing to cover the Mancos top. PUH.

10. Plug 3 (Mesaverde Formation Tops, 3305-3205', 12 Sacks Class B Cement)

Mix 12 sx Class B cement and spot a balanced plug inside the casing to cover the Mesaverde top. PUH.

11. Plug 4 (Pictured Cliffs, Fruitland, and Kirtland Formation Tops, 1806-1068', 60 Sacks Class B Cement)

Mix 60 sx Class B cement and spot a balanced plug inside the casing to cover the Pictured Cliffs, Fruitland, and Kirtland tops. PUH.

12. Plug 5 (Surface Plug, 752-0', 197 Sacks Class B Cement)

Two stage plug as TOC is at 620'

Part 1: Mix 5 sx Class B cement. Set balanced plug at 752' using 5 sx inside casing. PUH to 610'. Reverse circulate hole clean.

Part 2: RU WL and perforate 4 big hole charge (if available) squeeze holes @ 600'. TOO H and RD wireline. **Observe well for 30 minutes per BLM regulations.** RU pump, close blind rams and establish circulation out bradenhead with water. Circulate BH clean. TIH with 4-1/2" CR and set @ 550'. Mix 141 sx Class B cement and squeeze until good cement returns to surface out BH valve. Shut BH valve and squeeze to max 200 psi. Sting out of CR and reverse circulate cement out of tubing. TOO H and LD stinger. TIH with open ended tubing to 500'. Mix 51 sx Class B cement and pump inside plug. TOO H and LD Tubing. SI well and WOC.

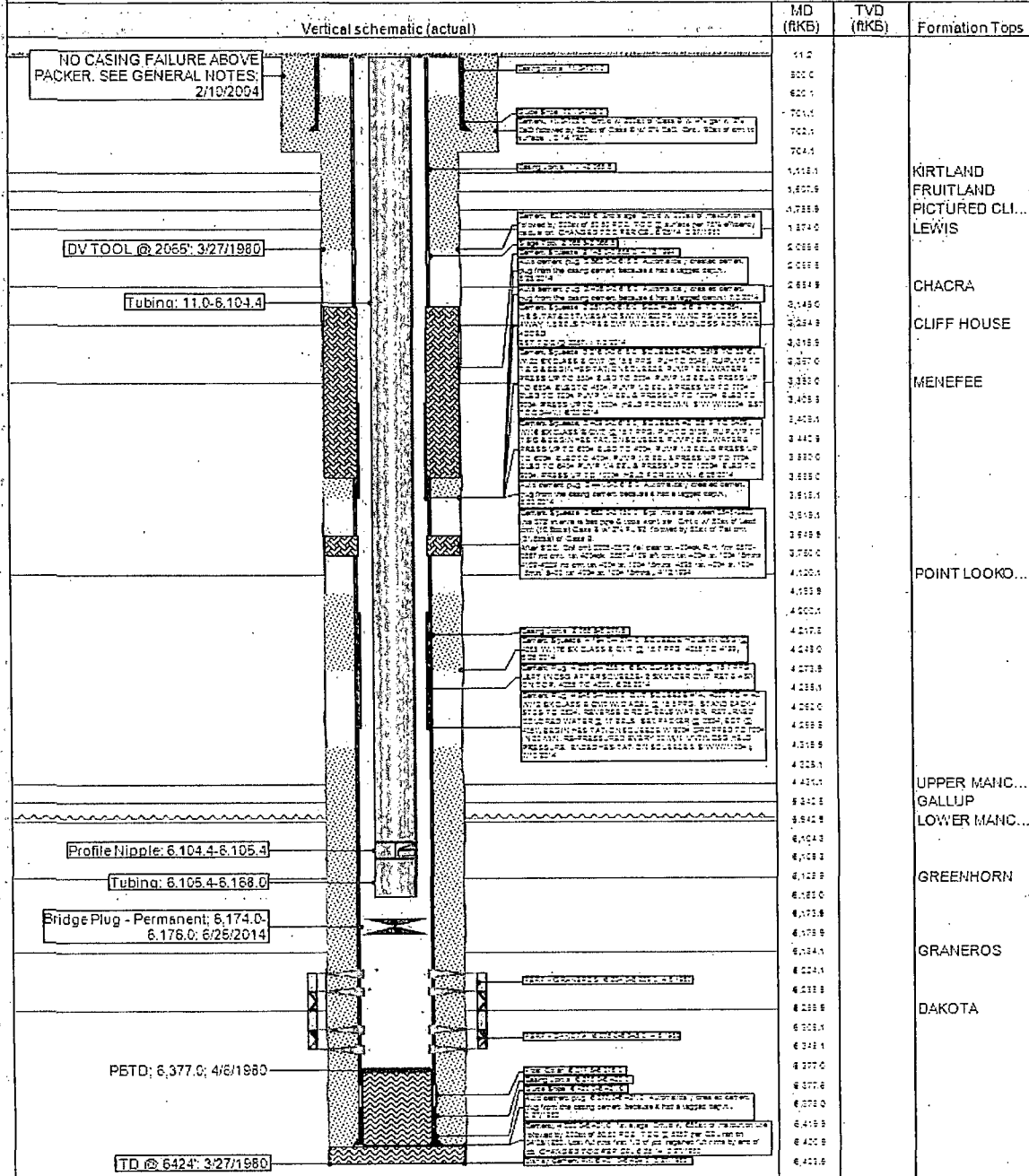
13. Nipple down BOP and cut off casing below the casing flange. Install P&A marker with cement to comply with regulations. Rig down, move off location, cut off anchors, and restore location.

ConocoPhillips

CURRENT SCHEMATIC KRAUSE WN FEDERAL #2E

District SOUTH	Field Name DK	API / UWI 3004524122	County SAN JUAN	State/Province NEW MEXICO
Original Spud Date 3/13/1980	Surface Legal Location 028-026N-011W-P	E/W Dist (ft) 1,120.00	E/W Ref FEL	N/S Dist (ft) 750.00
				N/S Ref FSL

Vertical - Original Hole, 9/3/2014 2:32:39 PM

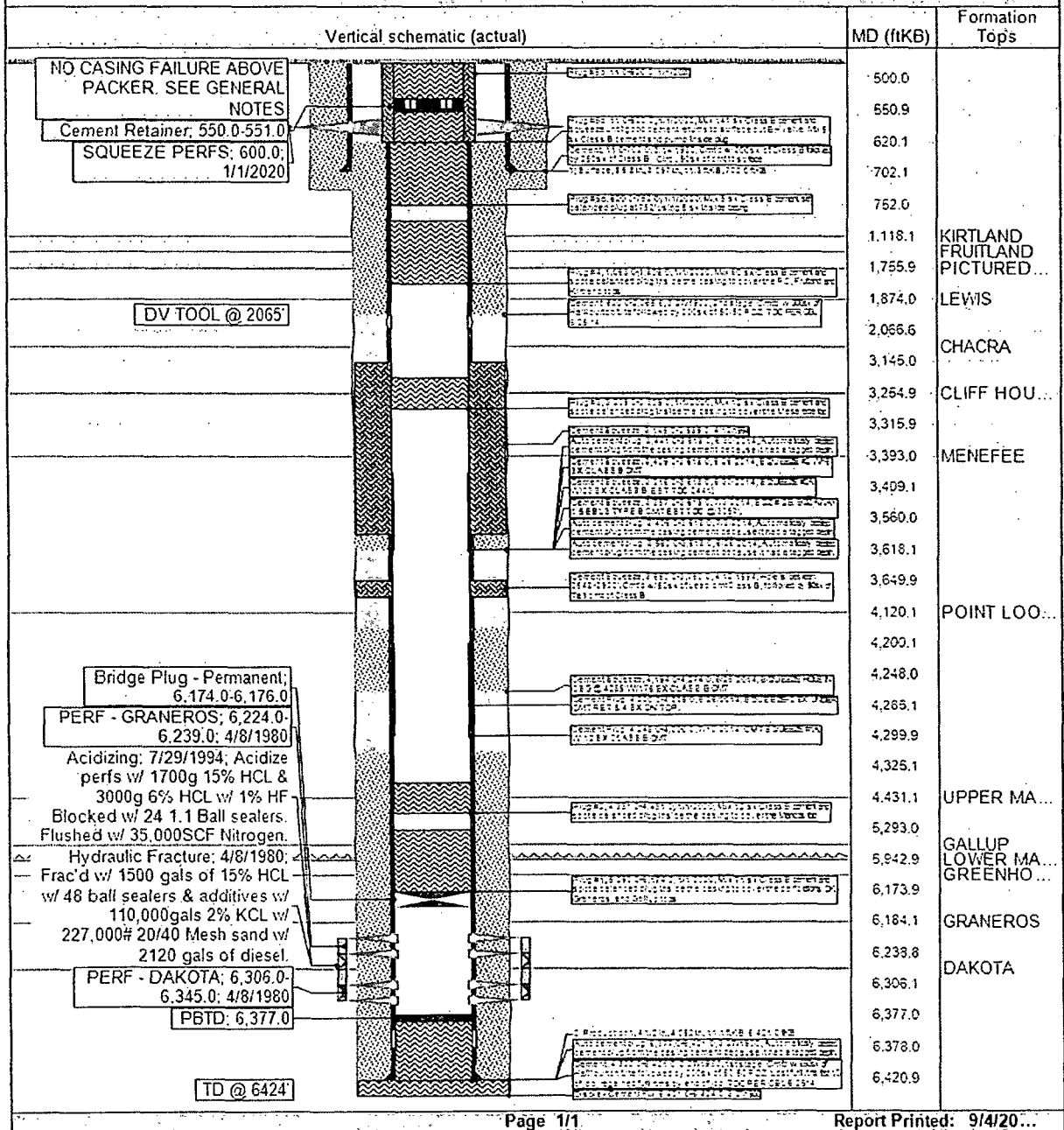


ConocoPhillips

Schematic - Proposed
KRAUSE WN FEDERAL #2E

District SOUTH	Field Name DK	API/UWI 3004524122	County SAN JUAN	State/Province NEW MEXICO
Original Spud Date 3/13/1980	Surf Loc 028-028N-011W-P	East/West Distance (ft) 1,120.00	East/West Reference FEL	N/S Dist (ft) 790.00
				North/South Reference FSL

Vertical - Original Hole, 1/1/2020 4:45:00 AM



UNITED STATES DEPARTMENT OF THE INTERIOR
BUREAU OF LAND MANAGEMENT
FARMINGTON DISTRICT OFFICE
6251 COLLEGE BLVD.
FARMINGTON, NEW MEXICO 87402

Attachment to notice of
Intention to Abandon:

Re: Permanent Abandonment
Well: Krause WN Federal #2E

CONDITIONS OF APPROVAL

1. Plugging operations authorized are subject to the attached "General Requirements for Permanent Abandonment of Wells on Federal and Indian Lease."
2. Farmington Office is to be notified at least 24 hours before the plugging operations commence (505) 564-7750.
3. The following modifications to your plugging program are to be made:
 - a) Set plug #2 (4504-4404) ft. to cover the Mancos top.
 - b) Set a plug (2717-2617) ft. to cover the Chacra top.

Note: Low concentrations of H₂S (10 ppm GSV) have been reported in wells within a 1 mile radius of this location.

You are also required to place cement excesses per 4.2 and 4.4 of the attached General Requirements.

Office Hours: 7:45 a.m. to 4:30 p.m.