

UNITED STATES  
DEPARTMENT OF THE INTERIOR  
BUREAU OF LAND MANAGEMENT

OIL CONS. DIV DIST. 3

DEC 26 2014

FORM APPROVED  
OMB NO. 1004-0137  
Expires July 31, 2010

## SUNDRY NOTICES AND REPORTS ON WELLS

Do not use this form for proposals to drill or to re-enter an  
abandoned well. Use Form 3160-3 (APD) for such proposals.

SUBMIT IN TRIPLICATE - Other instructions on page 2

## 1. Type of Well

☐ Oil Well ☒ Gas Well ☐ Other

## 2. Name of Operator

XTO ENERGY INC.

## 3a. Address

382 CR 3100 AZTEC, NM 87410

## 3b. Phone No. (include area code)

505-333-3100

## 4. Location of Well (Footage, Sec., T., R., M., or Survey Description)

735' FNL &amp; 1705' FEL NWNE Sec. 4 (B) - T29N-R13W N.M.P.M.

## 5. Lease Serial No.

NMSF-078643A

## 6. If Indian, Allottee or Tribe Name

## 7. If Unit or CA/Agreement, Name and/or No.

NNM-108262 (FC)

NNM-130121 (PC)

## 8. Well Name and No.

FARMINGTON #2

## 9. API Well No.

30-045-30814

## 10. Field and Pool, or Exploratory Area

BASIN FRUITLAND COAL

FULCHER KUTZ PICTURED CLIFFS

## 11. County or Parish, State

SAN JUAN

NM

## 12. CHECK APPROPRIATE BOX(ES) TO INDICATE NATURE OF NOTICE, REPORT, OR OTHER DATA

## TYPE OF SUBMISSION

☒ Notice of Intent☐ Subsequent Report☐ Final Abandonment Notice

## TYPE OF ACTION

☐ Acidize☐ Alter Casing☐ Casing Repair☐ Change Plans☐ Convert to Injection☐ Deepen☐ Fracture Treat☐ New Construction☒ Plug and Abandon☐ Plug Back☐ Production (Start/Resume)☐ Reclamation☐ Recomplete☐ Temporarily Abandon☐ Water Disposal☐ Water Shut-Off☐ Well Integrity☐ Other

13. Describe Proposed or Completed Operation (clearly state all pertinent details, including estimated starting date of any proposed work and approximate duration thereof. If the proposal is to deepen directionally or recompleat horizontally, give subsurface locations and measured and true vertical depths of all pertinent markers and zones. Attach the Bond under which the work will be performed or provide the Bond No. on file with BLM/BIA. Required subsequent reports shall be filed within 30 days following completion of the involved operations. If the operation results in a multiple completion or recompleat in a new interval, a Form 3160-4 shall be filed once testing has been completed. Final Abandonment Notices shall be filed only after all requirements, including reclamation, have been completed, and the operator has determined that the final site is ready for final inspection.)

XTO Energy Inc, intends to plug and abandon this well per the attached procedure and will be using a Closed Loop System. Please see also the attached current and proposed wellbore diagrams. A Surface Reclamation Plan is not needed due to surface ownership being Fee.

BLM'S APPROVAL OR ACCEPTANCE OF THIS ACTION DOES NOT RELIEVE THE LESSEE AND OPERATOR FROM OBTAINING ANY OTHER AUTHORIZATION REQUIRED FOR OPERATIONS ON FEDERAL AND INDIAN LANDS.

Notify NMOCD 24 hrs  
prior to beginning  
operations

SEE ATTACHED FOR  
CONDITIONS OF APPROVAL

14. I hereby certify that the foregoing is true and correct  
Name (Printed/Typed)

KRISTEN D. BABCOCK

Title REGULATORY ANALYST

Signature

Kristen D. Babcock

Date 12/17/2014

## THIS SPACE FOR FEDERAL OR STATE OFFICE USE

Approved by

Troy Salyers

Title

PE

Date

12/23/2014

Conditions of approval, if any, are attached. Approval of this notice does not warrant or certify that the applicant holds legal or equitable title to those rights in the subject lease which would entitle the applicant to conduct operations thereon.

Office

FFO

Title 18 U.S.C. Section 1001, and Title 43 U.S.C. Section 1212, makes it a crime for any person to make any fictitious or fraudulent statements or representations as to any matter within its jurisdiction.

NMOCD

any department or agency of the United States any false,

6

**Farmington #2**  
**Sec 4, T 29 N, R 13 W**  
**San Juan County, New Mexico**  
**12/1/2014**

**Plug and Abandon Procedure**

**AFE Number:** 1410597 (PC), 1410598 (FC)

**Spud Date:** 4/12/2002

**Surface Casing:** 7", 20#, J-55 csg @ 173'. Cmt'd w/65 sx. Circ 0.25 bbl cmt to surf.

**Production Casing:** 4-1/2", 10.5#, J-55 csg @ 1,617'. Cmt'd w/180 sx. Circ 10 bbls cmt to surf.  
Capacity: .0159 bbls/ft or .6699 gal/ft

**Production Tubing:** 2-3/8" string

**Rod String:** 3/4" string

**Pump:** 2-1/4" tubing pump

**Perforations:** Fruitland Coal: 1,119' – 1,407'  
Pictured Cliffs: 1,422' – 1,435'

**PBTD:** 1,594'

**Recent Production:** 27 mcfpd, 0 bwpd (downhole failure).

*\*Notify NMOCD & BLM 24 hours prior to beginning plugging operations\**

1. Check for COA's and approved NOI before beginning operations.
2. Test rig anchors.
3. Set flowback tank.
4. MIRU completion rig. Review JSA.
5. Kill well.
6. TOH & LD rods.
7. ND WH. NU & FT BOP.
8. TOH tubing and LD pump.
9. TIH 3-7/8" bit & 3-7/8" string mill to 1,119' on 2-3/8" workstring. TOH.
10. TIH 4-1/2" CR and set @  $\pm 1,110'$ . PT tubing. Sting out of CR and circulate hole clean.

11. PT casing and CR to 550 psig. If casing does not test, contact engineer.
12. MIRU cement truck. Review JSA.
13. **Perforation Isolation Plug (1,110' – 1,060')**: Pump 8 sx Class "B" cement (15.6 ppg, 1.18 cuft/sx yield) down tubing and spot a balanced plug from 1,110' – 1,060' (volume calculated with 50' excess).
14. **Fruitland Coal Top Plug (860' - 760')**: Pump 12 sx Class "B" cement (15.6 ppg, 1.18 cuft/sx yield) down tubing and spot a balanced plug from 860' – 760' (volume calculated with 50' excess).
15. **Casing Shoe & Surface Plug (223' – Surface)**: Pump 21 sx Class "B" cement (15.6 ppg, 1.18 cuft/sx yield) down tubing and spot a balanced plug from 223' – Surface (volume calculated with 50' excess).
16. TOH & LD tubing.
17. RDMO cement truck.
18. WOC 4 hours.
19. Cut off WH. Fill in casing as needed with cement. Install above ground P&A marker.
20. Cut off anchors and reclaim location.

## **Checklist**

### **Regulatory:**

1. NOI to P&A on form C-103 & 3160-5
2. Submit a post-work sundry on form C-103 & 3160-5 which details the P&A work and location work within 30 days of completing all required restoration work.

### **Equipment:**

1. 1 flowback tank
2. If tbg does not PT, 1,200' 2-3/8" workstring
3. 4-1/2" cement retainer
4. 3-7/8" string mill
5. 41 sx Class "B" cement
6. 1 above ground marker

### **Services:**

1. Completion rig
2. Cement truck

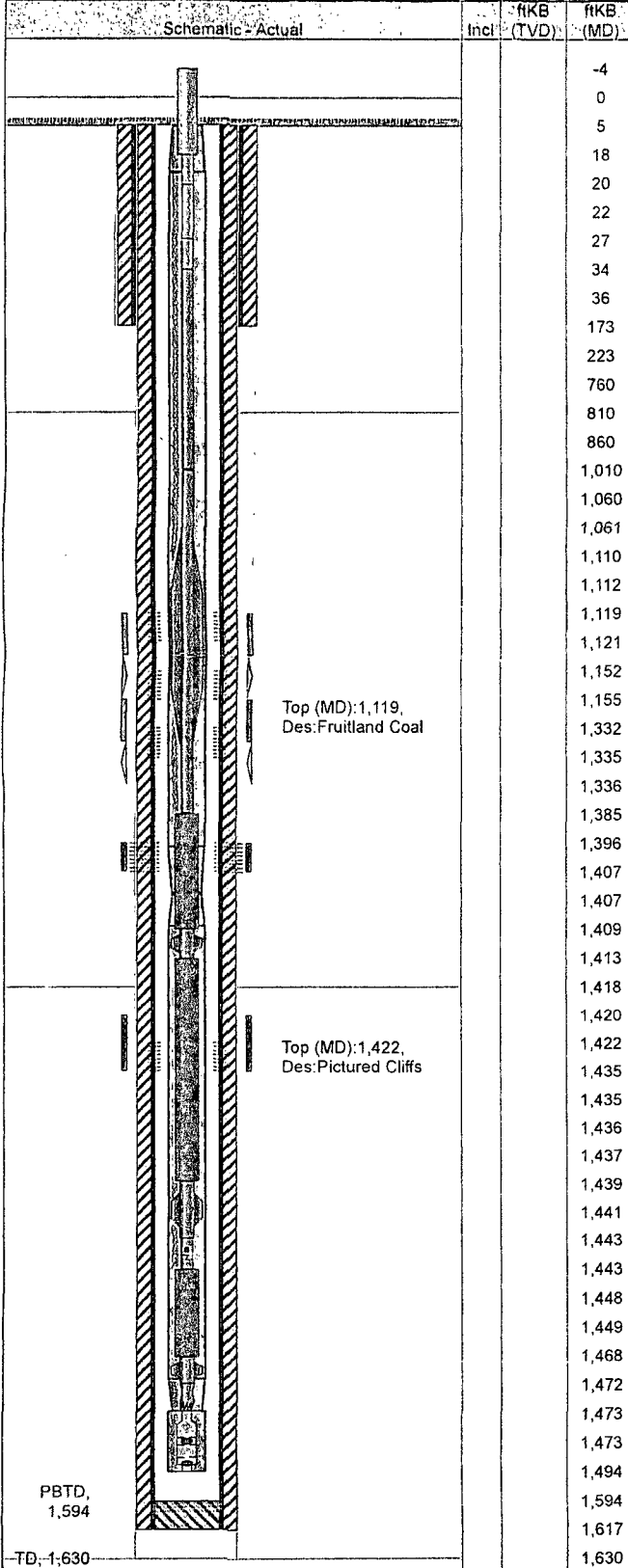


# XTO - Wellbore Diagram

Well Name: Farmington 02

API/UWI	E/W Dist (ft)	E/W Ref	N/S Dist (ft)	N/S Ref	Location	Field Name	County	State/Province
30045308140000	1,705.0	FEL	735.0	FNL	T29N-R13W-S04	Basin Fruitland Coal	San Juan	New Mexico
Well Configuration Type	XTO ID B	Orig KB Elev (ft)	Gr Elev (ft)	KB-Grd (ft)	Spud Date	PBTD (All) (ftKB)	Total Depth (ftKB)	Method Of Production
Vertical	67937	5,557.00	5,552.00	5.00	4/11/2002	Original Hole - 1594.0	1,630.0	Beam

Well Config: Vertical - Original Hole, 12/4/2014 8:15:22 AM



Zones									
Zone		Top (ftKB)		Blm (ftKB)					
Fruitland Coal		1,119.0		1,407.0					
Pictured Cliffs		1,422.0		1,435.0					
Casing Strings									
Casing Description	OD (in)	Wt (lbs/ft)	String Grade	Top Connection	Set Depth (ftKB)				
Surface	7	20.00	J-55		173.0				
Casing Description	OD (in)	Wt (lbs/ft)	String Grade	Top Connection	Set Depth (ftKB)				
Production	4 1/2	10.50	J-55		1,617.0				
Cement									
Description	Type			String					
Surface Casing Cement	casing			Surface, 173.0ftKB					
Comment									
Cmt w/65 sx CI B cmt w/3% Ca Cl2 & 1/4# celloflake. Circ 0.25 bbls cmt to surf									
Description	Type			String					
Production Casing Cement	casing			Production, 1,617.0ftKB					
Comment									
Cmt csg w/100 sx 2% EconoLite (metasilicate) w/1/4# celloflake. Tailed in w/80 sx CI B w/1/4# celloflake. Reciprocated pipe while pumping cmt. Good circ throughout job. Circ 10 bbls cmt to surf.									
Perforations									
Date	Top (ftKB)	Blm (ftKB)	Shot/Dens (shots/ft)	Hole Diameter (in)	Phasing (°)	Curr. Status	Zone		
12/17/2010	1,119.0	1,121.0	3.0	0.340	120		Fruitland Coal		
12/17/2010	1,152.0	1,155.0	3.0	0.340	120		Fruitland Coal		
12/17/2010	1,332.0	1,335.0	3.0	0.340	120		Fruitland Coal		
6/17/2002	1,396.0	1,407.0	3.0	0.380	120		Fruitland Coal		
6/18/2002	1,396.0	1,407.0	3.0	0.380	120		Fruitland Coal		
12/7/2010	1,422.0	1,435.0	3.0	0.340	120		Pictured Cliffs		
Tubing Strings									
Tubing Description		Run Date			Set Depth (ftKB)				
Tubing - Production		10/24/2012			1,493.7				
Tubing Components									
Item Description	Jts	Model	OD (in)	Wt (lbs/ft)	Grade	Top Thread	Len (ft)	Top (ftKB)	Blm (ftKB)
Tubing	44	T&C Upset	2 3/8	4.70	J-55		1,402.45	5.0	1,407.4
Tubing	2	T&C Upset	2 3/8	4.70	J-55		65.60	1,407.4	1,473.0
Tubing Barrel Pump	1		2 3/8				20.70	1,473.0	1,493.7
Rods									
Rod Description		Run Date		String Length (ft)		Set Depth (ftKB)			
Rod String		10/25/2012		1,476.50		1,473.0			
Rod Components									
Item Description	Jts	Model	OD (in)	Grade	Len (ft)	Top (ftKB)	Blm (ftKB)		
Polished Rod	1		1 1/4		22.00	-3.5	18.5		
Rod Sub	1		3/4 D		2.00	18.5	20.5		
Rod Sub	1		3/4 D		6.00	20.5	26.5		
Rod Sub	1		3/4 D		8.00	26.5	34.5		
Sucker Rod	39		3/4 D		975.00	34.5	1,009.5		
Sucker Rod w/Molded Guides	15		3/4 D		375.00	1,009.5	1,384.5		
Sinker Bar	1		1 1/2 K		25.00	1,384.5	1,409.5		
Stabilizer Rod	1		7/8 D		4.00	1,409.5	1,413.5		
Sinker Bar	1		1 1/2 K		25.00	1,413.5	1,438.5		
Stabilizer Rod	1		7/8 D		4.00	1,438.5	1,442.5		
Shear Tool - 21K	1		3/4		0.50	1,442.5	1,443.0		
Sinker Bar	1		1 1/2 K		25.00	1,443.0	1,468.0		
Stabilizer Rod	1		7/8 D		4.00	1,468.0	1,472.0		
On-Off Tool	1		7/8		1.00	1,472.0	1,473.0		



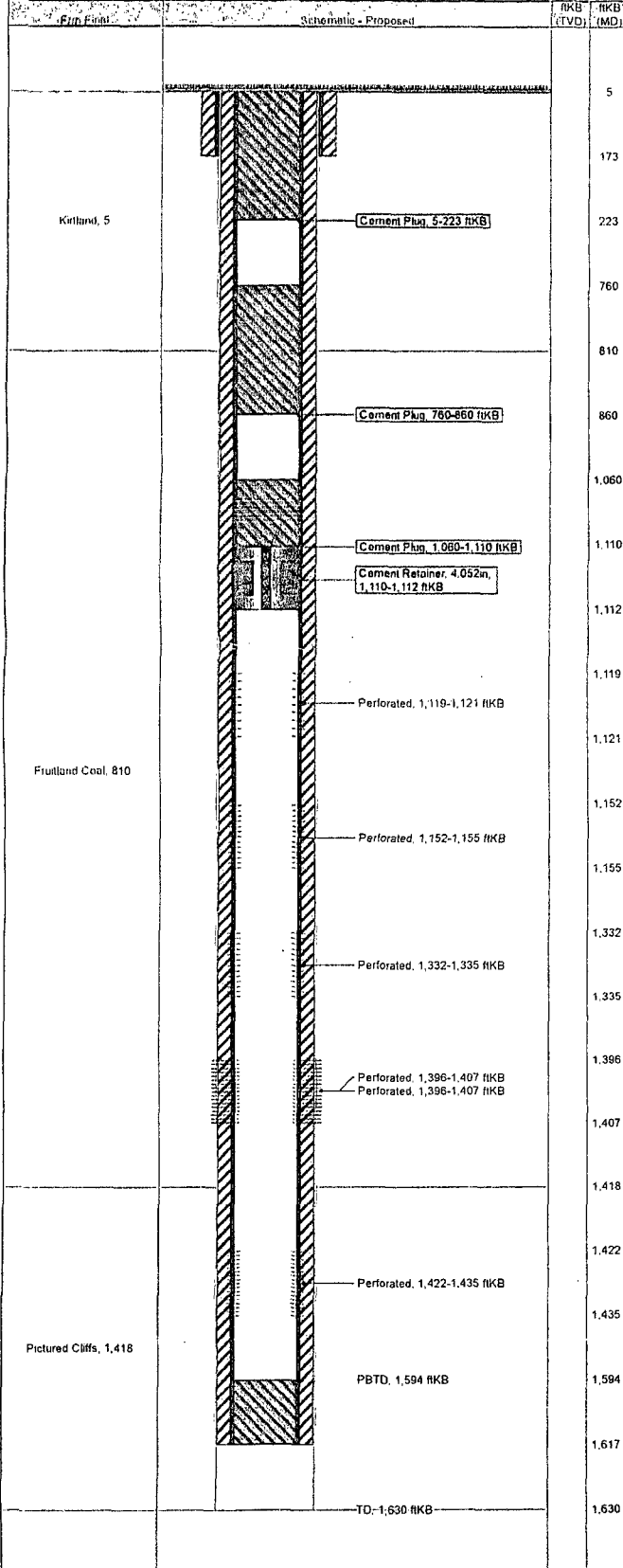


# XTO - Proposed P&A Wellbore Diagram

Well Name: Farmington 02

API/UWI	E/W Dist (ft)	E/W Ref	N/S Dist (ft)	N/S Ref	Location	Field Name	County	State/Province
30045308140000	1,705.0	FEL	735.0	FNL	T29N-R13W-S04	Basin Fruitland Coal	San Juan	New Mexico
Well Configuration Type	XTO ID B	Orig KB Elev (ft)	Gr Elev (ft)	KB-Grd (ft)	Spud Date	PBTD (All) (ftKB)	Total Depth (ftKB)	Method Of Production
Vertical	67937	5,557.00	5,552.00	5.00	4/11/2002	Original Hole - 1594.0	1,630.0	Beam

Well Config: Vertical - Original Hole, 11/26/2014 11:51:10 AM



Zones		
Zone	Top (ftKB)	Btm (ftKB)
Fruitland Coal	1,119.0	1,407.0
Pictured Cliffs	1,422.0	1,435.0

Casing Strings					
Casing Description	OD (in)	Wt (lbs/ft)	String Grade	Top Connection	Set Depth (ftKB)
Surface	7	20.00	J-55		173.0
Production	4 1/2	10.50	J-55		1,617.0

Cement		
Description	Type	String
Surface Casing Cement	casing	Surface, 173.0ftKB

Comment  
Cmt w/65 sx CI B cmt w/3% Ca Cl2 & 1/4# celloflake. Circ 0.25 bbls cmt to surf

Description	Type	String
Production Casing Cement	casing	Production, 1,617.0ftKB

Comment  
Cmt csg w/100 sx 2% EconoLite (metasilicate) w/1/4# celloflake. Tailed in w/80 sx CI B w/1/4# celloflake. Reciprocated pipe while pumping cmt. Good circ throughout job. Circ 10 bbls cmt to surf.

Description	Type	String
Cement Plug	plug	Production, 1,617.0ftKB

Comment  
Plug 1: Pump 8 sx fr/1,110' - 1,060'.

Description	Type	String
Cement Plug	plug	Production, 1,617.0ftKB

Comment  
Plug 2: Pump 12 sx fr/860' - 760'.

Description	Type	String
Cement Plug	plug	Production, 1,617.0ftKB

Comment  
Plug 3: Pump 21 sx fr/223' - Surface

Other In Hole		
Description	OD (in)	Top (ftKB)
Cement Retainer	4.052	1,110.0

Perforations						
Date	Top (ftKB)	Btm (ftKB)	Shot Dens (shots/ft)	Hole Diameter (in)	Phasing (°)	Zone
12/17/2010	1,119.0	1,121.0	3.0	0.340	120	Fruitland Coal
12/17/2010	1,152.0	1,155.0	3.0	0.340	120	Fruitland Coal
12/17/2010	1,332.0	1,335.0	3.0	0.340	120	Fruitland Coal
6/17/2002	1,396.0	1,407.0	3.0	0.380	120	Fruitland Coal
6/18/2002	1,396.0	1,407.0	3.0	0.380	120	Fruitland Coal
12/7/2010	1,422.0	1,435.0	3.0	0.340	120	Pictured Cliffs

**UNITED STATES DEPARTMENT OF THE INTERIOR  
BUREAU OF LAND MANAGEMENT  
FARMINGTON DISTRICT OFFICE  
6251 COLLEGE BLVD.  
FARMINGTON, NEW MEXICO 87402**

Attachment to notice of  
Intention to Abandon:

Re: Permanent Abandonment  
Well: Farmington #2

CONDITIONS OF APPROVAL

1. Plugging operations authorized are subject to the attached "General Requirements for Permanent Abandonment of Wells on Federal and Indian Lease."
2. Farmington Office is to be notified at least 24 hours before the plugging operations commence (505) 564-7750.

You are also required to place cement excesses per 4.2 and 4.4 of the attached General Requirements.

Office Hours: 7:45 a.m. to 4:30 p.m.