

UNITED STATES
DEPARTMENT OF THE INTERIOR
BUREAU OF LAND MANAGEMENT

DEC 19 2014

FORM APPROVED
OMB No. 1004-0137
Expires: July 31, 2010

SUNDRY NOTICES AND REPORTS ON WELLS
Do not use this form for proposals to drill or to re-enter an abandoned well. Use Form 3160-3 (APD) for such proposals.

5. Lease Serial No. **SF-078012**

6. If Indian, Allottee or Tribe Name

SUBMIT IN TRIPLICATE - Other instructions on page 2.

1. Type of Well

☐ Oil Well

☒ Gas Well

☐ Other

7. If Unit of CA/Agreement, Name and/or No.

Huerfano Unit

8. Well Name and No.

Huerfano Unit 112

2. Name of Operator

Burlington Resources Oil & Gas Company LP

9. API Well No.

30-045-05866

3a. Address

PO Box 4289, Farmington, NM 87499

3b. Phone No. (include area code)

(505) 326-9700

10. Field and Pool or Exploratory Area

Gallegos Gallup

4. Location of Well (Footage, Sec., T., R., M., or Survey Description)

Surface Unit F (SENW), 1650' FNL & 1650' FWL, Sec. 17, T26N, R10W

11. Country or Parish, State

San Juan, New Mexico

12. CHECK THE APPROPRIATE BOX(ES) TO INDICATE NATURE OF NOTICE, REPORT OR OTHER DATA

TYPE OF SUBMISSION

TYPE OF ACTION

☒ Notice of Intent

☐ Subsequent Report

☐ Final Abandonment Notice

☐ Acidize

☐ Alter Casing

☐ Casing Repair

☐ Change Plans

☐ Convert to Injection

☐ Deepen

☐ Fracture Treat

☐ New Construction

☒ Plug and Abandon

☐ Plug Back

☐ Production (Start/Resume)

☐ Reclamation

☐ Recomplete

☐ Temporarily Abandon

☐ Water Disposal

☐ Water Shut-Off

☐ Well Integrity

☐ Other

13. Describe Proposed or Completed Operation: Clearly state all pertinent details, including estimated starting date of any proposed work and approximate duration thereof. If the proposal is to deepen directionally or recompleat horizontally, give subsurface locations and measured and true vertical depths of all pertinent markers and zones. Attach the bond under which the work will be performed or provide the Bond No. on file with BLM/BIA. Required subsequent reports must be filed within 30 days following completion of the involved operations. If the operation results in a multiple completion or recompleat in a new interval, a Form 3160-4 must be filed once Testing has been completed. Final Abandonment Notices must be filed only after all requirements, including reclamation, have been completed and the operator has determined that the site is ready for final inspection.)

ConocoPhillips requests permission to P&A the subject well per the attached procedure, current and proposed wellbore schematics. The Pre-Disturbance onsite was held on 12/11/14 with Bob Switzer/BLM. A Closed Loop system will be utilized for this P&A.

OIL CONS. DIV DIST. 3

JAN 02 2015

Notify NMOCD 24 hrs
prior to beginning
operations

SEE ATTACHED FOR
CONDITIONS OF APPROVAL

BLM'S APPROVAL OR ACCEPTANCE OF THIS
ACTION DOES NOT RELIEVE THE LESSEE AND
OPERATOR FROM OBTAINING ANY OTHER
AUTHORIZATION REQUIRED FOR OPERATIONS
ON FEDERAL AND INDIAN LANDS

14. I hereby certify that the foregoing is true and correct. Name (Printed/Typed)

RATSY CLUGSTON

Title

STAFF REGULATORY TECHNICIAN

Signature

Date

12/17/2014

THIS SPACE FOR FEDERAL OR STATE OFFICE USE

Approved by

Troy Salvors

Title **PE**

Date **12/29/2014**

Conditions of approval, if any, are attached. Approval of this notice does not warrant or certify that the applicant holds legal or equitable title to those rights in the subject lease which would entitle the applicant to conduct operations thereon.

Office **FFO**

Title 18 U.S.C. Section 1001 and Title 43 U.S.C. Section 1212, make it a crime for any person knowingly and willfully to make to any department or agency of the United States any false, fictitious or fraudulent statements or representations as to any matter within its jurisdiction.

(Instruction on page 2)

ConocoPhillips
HUERFANO UNIT 112
Expense - P&A

Lat 36° 29' 27.204" N

Long 107° 55' 19.704" W

PROCEDURE

This well was TA'd on November 30, 2009. Approvals were received 6/22/09.

This project requires the use of an A-Plus steel tank to handle waste fluids circulated from the well and cement wash up.

1. Hold pre-job safety meeting. Comply with all NMOC, BLM, and COPC safety and environmental regulations. Test rig anchors prior to moving in rig.
2. MIRU workover rig. Check casing and bradenhead pressures and record them in Wellview. **If there is pressure on the BH, contact the Wells Engineer.**
3. Remove existing piping on casing valve. RU blow lines from casing valves and begin blowing down casing pressure. Kill well as necessary. Ensure well is dead or on a vacuum.
4. ND wellhead and NU BOPE. Pressure and function test BOP to 250 psi low and 1000 psi over SICP high to a maximum of 2000 psi held and charted for 10 minutes as per COP Well Control Manual. PU and remove tubing hanger
5. PU 3-7/8" bit and watermelon mill and round trip as deep as possible above CR @ 2239'.
6. Pressure test tubing to 1000 psi with a wireline set tubing plug. Load hole, and pressure test casing to 800 psi. *If casing does not test, then spot or tag subsequent plugs as appropriate.* POOH w/ tubing.
7. RU wireline and run CBL with 500 psi on casing from CR to surface to identify TOC. *Adjust plugs as necessary for new TOC.*

All cement volumes use 100% excess outside pipe and 50' excess inside pipe. The stabilizing wellbore fluid will be 8.3 ppg, sufficient to balance all exposed formation pressures. All cement will be ASTM Class B mixed at 15.6 ppg with a 1.18 cf/sk yield.

8. Plug 1 (Pictured Cliffs and Fruitland Formation Tops, 2095-1478', 51 Sacks Class B Cement)

Mix 51 sx Class B cement and spot a balanced plug inside the casing to cover the Pictured Cliffs and Fruitland Top. POOH.

9. Plug 2 (Kirtland and Ojo Alamo Formation Tops, 1228-1012', 101 Sacks Class B Cement)

RIH and perforate 3 squeeze holes through the 4-1/2" and 7" casing @ 1228'. Establish injection rate into squeeze holes. RIH w/ 4-1/2" CR and set @ 1178'. Mix 101 sx Class B cement. Squeeze 80 sx outside the 4-1/2" casing, leaving 21 sx inside the casing to cover the Kirtland and Ojo Alamo tops. POOH.

10. Plug 3 (Surface Plug, 382-0', 162 Sacks Class B Cement)

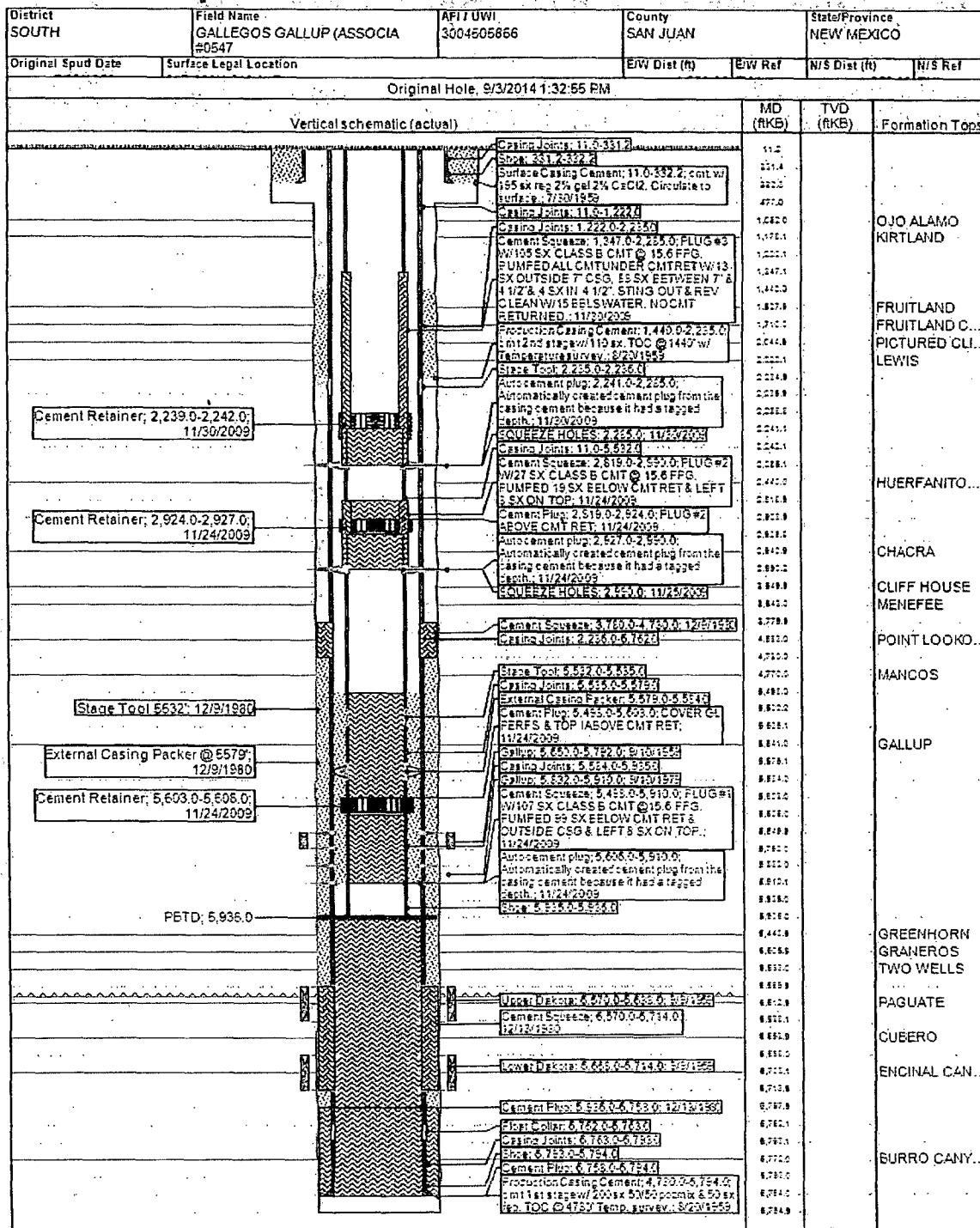
RU WL and perforate 4 big hole charge (if available) squeeze holes through the 4-1/2" and 7" casing @ 382'. TOOH and RD wireline. Observe well for 30 minutes per BLM regulations. RU pump, close blind rams and establish circulation out bradenhead with water. Circulate BH clean. TIH with 4-1/2" CR and set @ 332'. Mix 151 sx Class B cement and squeeze outside the 4-1/2" casing until good cement returns to surface out BH valve and out the annulus between the 10-3/4" and 7" casing. Shut BH valve and squeeze to max 200 psi. Sting out of CR and reverse circulate cement out of tubing. TOOH and LD stinger. TIH with open ended tubing to 332'. Mix 11 sx Class B cement and pump inside plug. TOOH and LD Tubing. SI well and WOC.

11. Nipple down BOP and cut off casing below the casing flange. Install P&A marker with cement to comply with regulations. Rig down, move off location, cut off anchors, and restore location.



CURRENT SCHEMATIC

HUERFANO UNIT #112



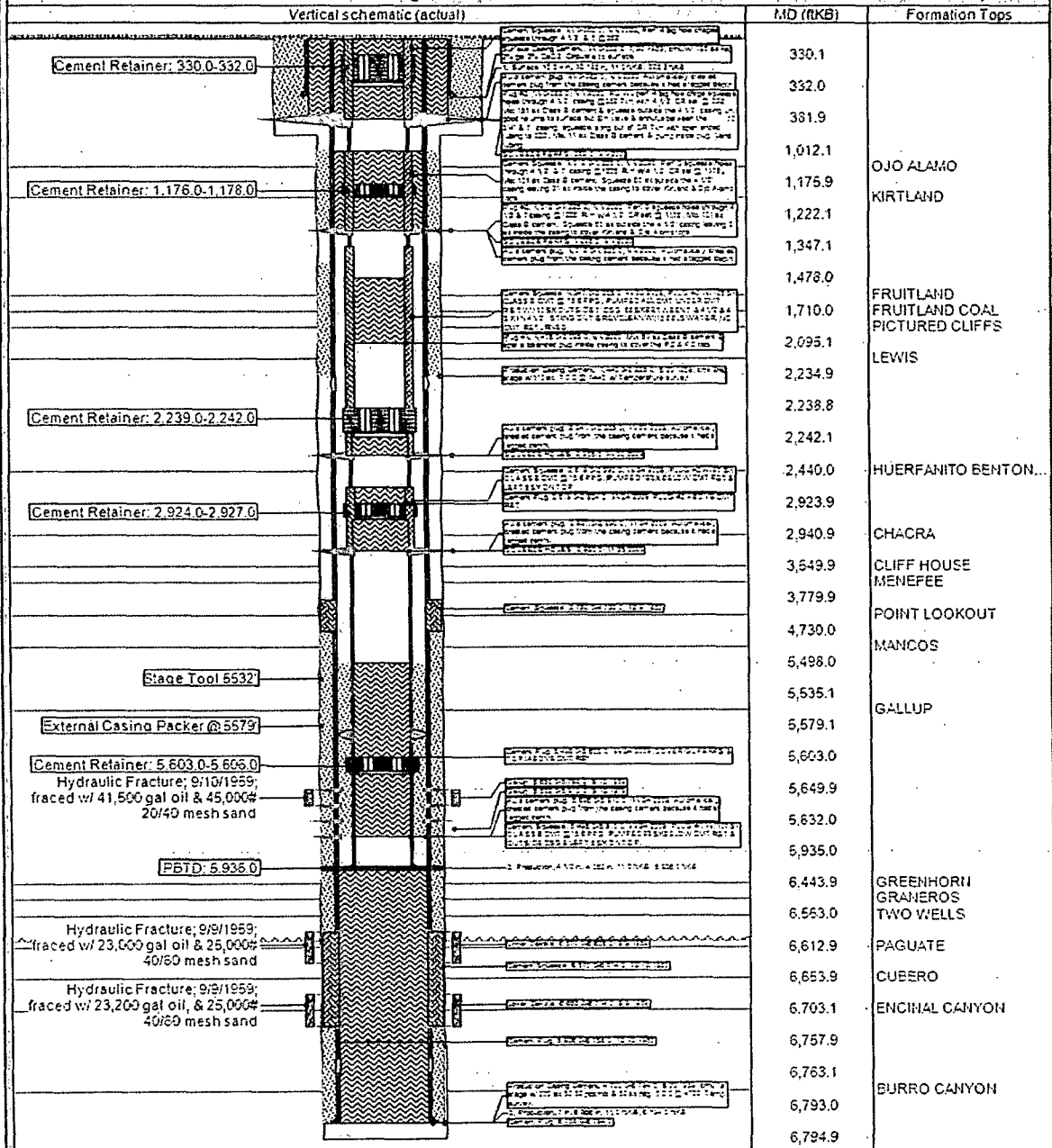
ConocoPhillips

Well Name: **HUERFANO UNIT #112**

Proposed Schematic

API/UVI 3004505866	Surface Legal Location 017-026N-010W-F	Field Name GALLUP BASIN (ASSOCIATED)	UTM Zone No. 11.00	State Province NEW MEXICO	Well Configuration Type
Ground Elevation (ft) 6,583.00	Original KSB Elevation (ft) 6,594.00	KSB Ground Distance (ft) 6,594.00	KSB Flying Range Distance (ft) 6,594.00	KSB Flying Range Distance (ft) 6,594.00	KSB Flying Range Distance (ft) 6,594.00

Original Hole, 1/1/2020 12:04:00 AM



UNITED STATES DEPARTMENT OF THE INTERIOR
BUREAU OF LAND MANAGEMENT
FARMINGTON DISTRICT OFFICE
6251 COLLEGE BLVD.
FARMINGTON, NEW MEXICO 87402

Attachment to notice of
Intention to Abandon:

Re: Permanent Abandonment
Well: Huerfano Unit #112

CONDITIONS OF APPROVAL

1. Plugging operations authorized are subject to the attached "General Requirements for Permanent Abandonment of Wells on Federal and Indian Leases."
2. Farmington Office is to be notified at least 24 hours before the plugging operations commence (505) 564-7750.

Operator will run a CBL to verify cement top. Submit the electronic copy of the log for verification to the following addresses: tsalyers@blm.gov Brandon.Powell@state.nm.us

You are also required to place cement excesses per 4.2 and 4.4 of the attached General Requirements.

Office Hours: 7:45 a.m. to 4:30 p.m.