

Chaco 2307-13I #187H

Chaco Unit NE HZ (oil)(page 1)

Spud: 6/28/14

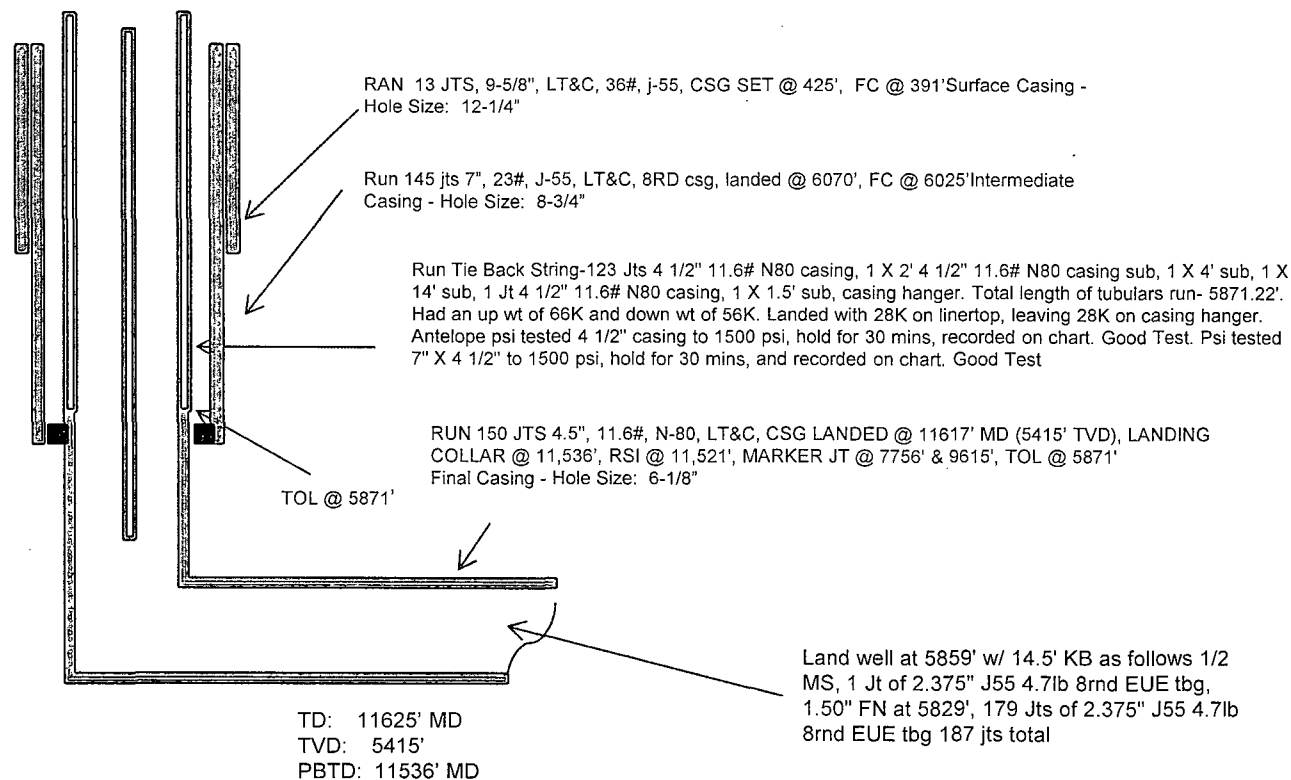
Completed: 9/21/14

SHL: 1742' FSL & 296' FEL
NE/4 SE/4 Section 13 (I), T23N, R7W

BHL: 1895' FNL & 332' FEL
SE/4 NE/4 Section 14 (H), T23N, R 7W

RIO ARRIBA NM
Elevation: 6926'
API: 30-039-31208

Tops	MD	TVD
Ojo Alamo	1340'	1328'
Kirtland	1648'	1626'
Pictured Cliffs	1952'	1922'
Lewis	2063'	2029'
Chacra	2383'	2339'
Cliff House	3495'	3427'
Menefee	3529'	3463'
Point Lookout	4306'	4198'
Mancos	4513'	4396'
Gallup	4913'	4785'



HOLE SIZE	CASING	CEMENT	VOLUME	CMT TOP
12-1/4"	9-5/8"	245 sx	222 cu.ft.	Surface
8-3/4"	7"	902 sx	1461 cu.ft.	Surface
6-1/8"	4-1/2"	430 sx	556 cu.ft.	TOL 5871'

CONFIDENTIAL

Lg 9/29/14

AV

2

Chaco 2307-131 #187H

Chaco Unit NE HZ (oil) (page 2 – lateral with completion)

Gallup 18th:
6096'-6288'- with
24, 0.40" holes.
Frac Gallup 18th
stage with
262,100#, 20/40
PSA Sand

Gallup 15th:
6972'-7180'- with
24, 0.40" holes.
Frac Gallup 15th
stage with
245,000#, 20/40
PSA Sand

Gallup 12th:
7922'-8126'- with
24, 0.40" holes.
Frac Gallup 12th
stage with 199,100#
20/40 PSA Sand

Gallup 8th:
9132'-9332'- with 24,
0.40" holes. Frac Gallup
8th stage with 199,300#,
20/40 PSA Sand

Gallup 4th:
10330'-10526'-
with 24, 0.40"
holes. Frac
Gallup 4th stage
with 203,546#,
20/40 PSA
Sand

Gallup 1st:
11316'-11461' +
RSI TOOL @
11529' with
199,800 # 20/40
PSA Sand

Gallup 11th:
8239'-8448'-
with 24, 0.40"
holes. Frac
Gallup 11th
stage with
200,500#,
20/40 PSA
Sand

Gallup 9th:
8884'-9042'- with
24, 0.40" holes.
Frac Gallup 9th
stage with
199,076#, 20/40
PSA Sand

Gallup 6th:
9740'-9934'-
with 24, 0.40"
holes. Frac
Gallup 6th stage
with 196,000# ,
20/40 PSA
Sand

Gallup 2nd:
10992'-11212'-
with 24 total,
0.40" holes.
Frac Gallup 2nd
stage with
201,000#, 20/40
PSA Sand

Gallup 16th:
6680'-6872'-
with 24, 0.40"
holes. Frac
Gallup 16th
stage with
239,000#,
20/40 PSA
Sand

Gallup 13th:
7317'-7822'- with
24, 0.40" holes.
Frac Gallup 13th
stage with
192,240#, 20/40
PSA Sand

Gallup 14th:
7017'-7510'-
with 24, 0.40"
holes. Frac
Gallup 14th
stage with
244,000#, 20/40
PSA Sand

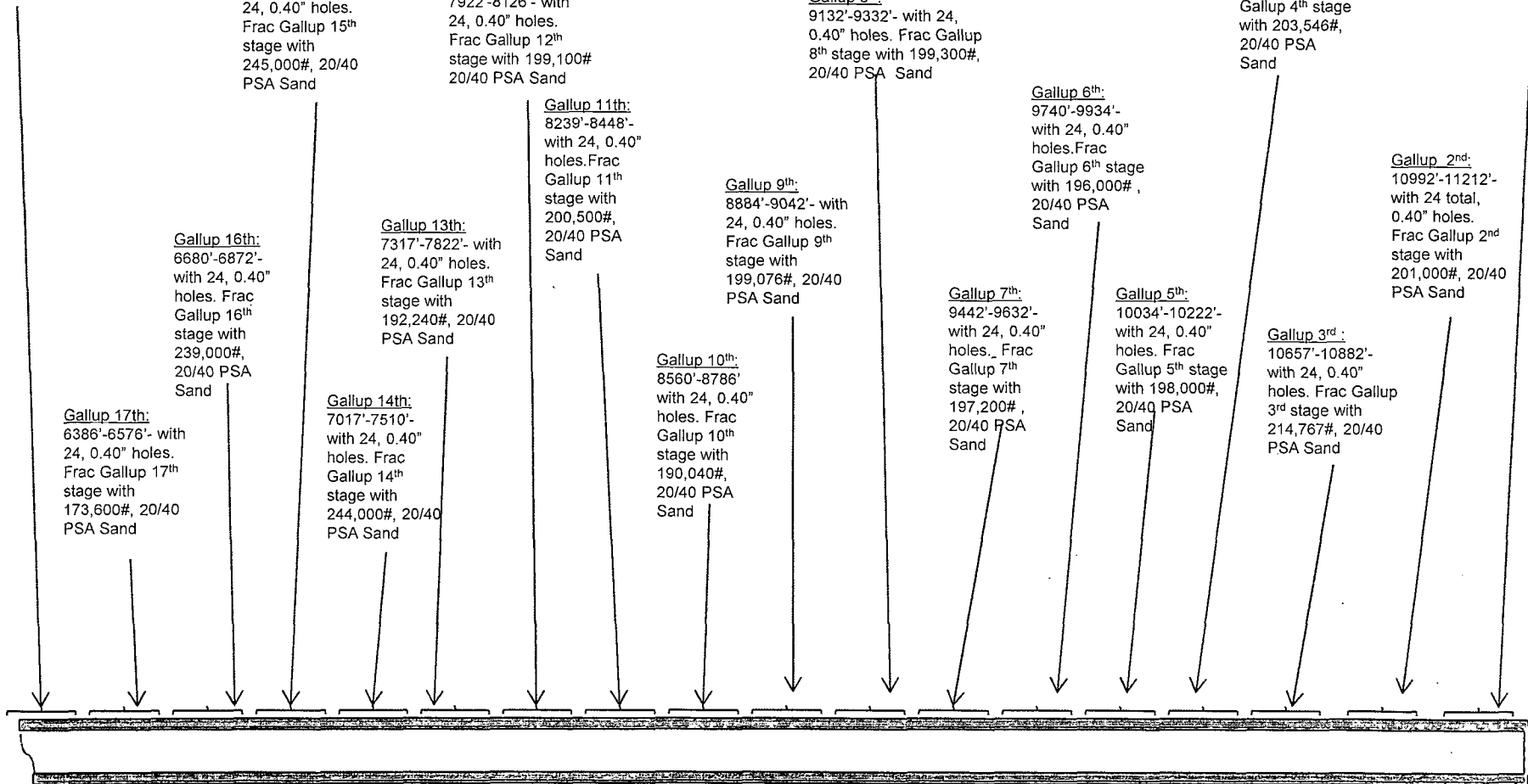
Gallup 10th:
8560'-8786'-
with 24, 0.40"
holes. Frac
Gallup 10th
stage with
190,040#,
20/40 PSA
Sand

Gallup 7th:
9442'-9632'-
with 24, 0.40"
holes. Frac
Gallup 7th
stage with
197,200# ,
20/40 PSA
Sand

Gallup 5th:
10034'-10222'-
with 24, 0.40"
holes. Frac
Gallup 5th stage
with 198,000#,
20/40 PSA
Sand

Gallup 3rd:
10657'-10882'-
with 24, 0.40"
holes. Frac Gallup
3rd stage with
214,767#, 20/40
PSA Sand

Gallup 17th:
6386'-6576'- with
24, 0.40" holes.
Frac Gallup 17th
stage with
173,600#, 20/40
PSA Sand



See page 1 for upper portion of hole