

Amended

NE CHACO COM #256H

Chaco Unit NE HZ (oil) (page 1)

Spud: 6/18/14

Completed: 10/19/14

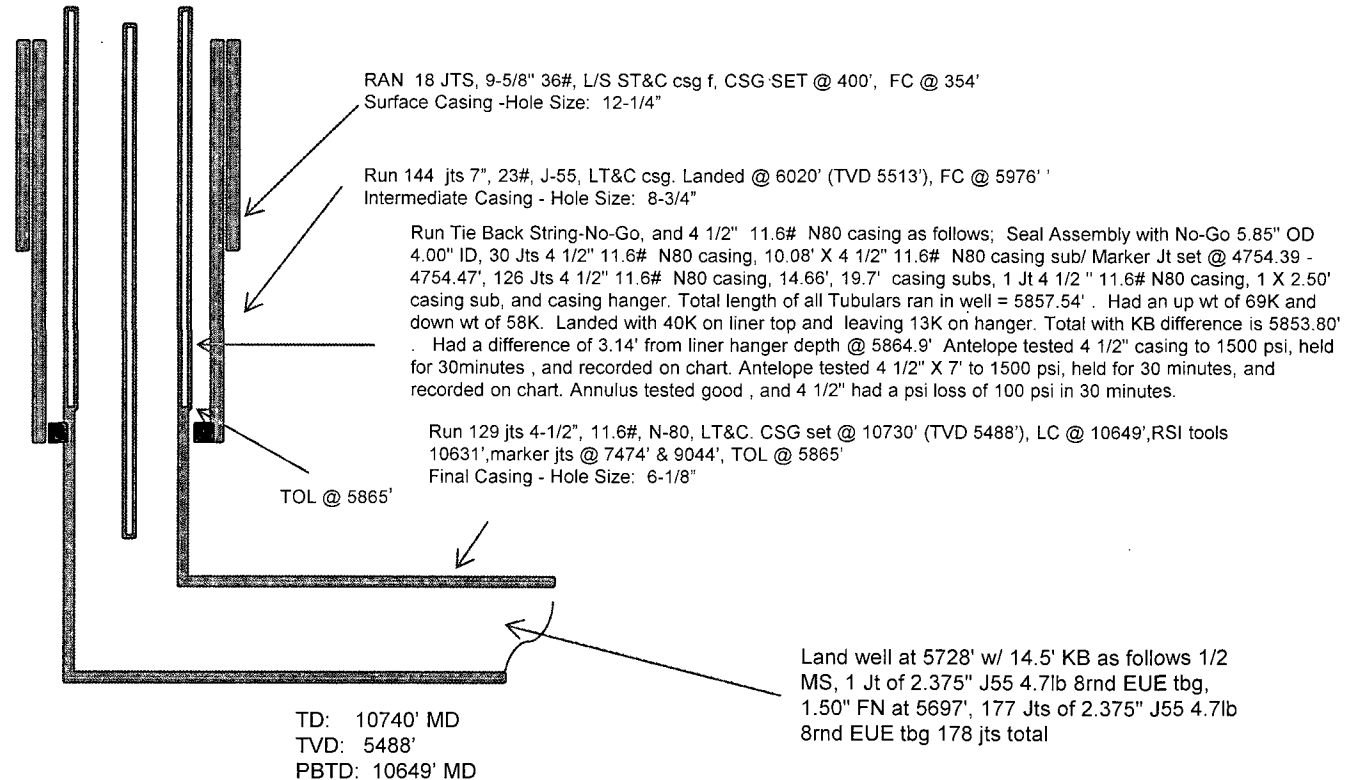
Amended: 11/6/14

SHL: 253' FSL & 196' FWL
SW/4 SW/4 Section 18(M), T23N, R6W

BHL: 290' FNL & 230' FEL
NE/4 NE/4 Section 19 (A), T23N, R 7W

RIO ARRIBA., NM
Elevation: 6938'
API: 30-039-31236

Tops	MD	TVD
Ojo Alamo	1335'	1329'
Kirtland	1626'	1616'
Pictured Cliffs	1932'	1919'
Lewis	2004'	1989'
Chacra	2344'	2326'
Cliff House	3427'	3397'
Menefee	3439'	3408'
Point Lookout	4233'	4195'
Mancos	4398'	4358'
Gallup	4818'	4776'



HOLE SIZE	CASING	CEMENT	VOLUME	CMT TOP
12-1/4"	9-5/8"	245 sx	222 cu.ft.	Surface
8-3/4"	7"	876 sx	1461 cu. ft.	Surface
6-1/8"	4-1/2"	140 sx	536 cu. ft.	TOL 5865'

OIL CONS. DIV DIST. 3
NOV 18 2014

Lg 11/6/14

22

4

NE CHACO COM #256H Chaco Unit NE HZ (oil)

(page 2 – lateral with completion)

Gallup 1st:
10385'-10571' +
RSI TOOL @
10634' with
201,000 # 20/40
PSA Sand

Gallup 4th:
9492'-9649'-
with 24, 0.40"
holes. Frac
Gallup 4th stage
with 200,470#,
20/40 PSA
Sand

Gallup 8th:
8468'-8624'- with 24,
0.40" holes. Frac Gallup
8th stage with 201,700#,
20/40 PSA Sand

Gallup 6th:
8980'-9136'-
with 24, 0.40"
holes. Frac
Gallup 6th stage
with 196,200# ,
20/40 PSA
Sand

Gallup 3rd:
9748'-9900'- with
24, 0.40"
holes. Frac Gallup
3rd stage with
199,800#, 20/40
PSA Sand

Gallup 2nd:
10004'-
10265'- with
24 total, 0.40"
holes. Frac
Gallup 2nd
stage with
200,200#,
20/40 PSA
Sand

Gallup 5th:
9236'-9392'-with
24, 0.40" holes.
Frac Gallup 5th
stage with
200,840#, 20/40
PSA Sand

Gallup 7th:
8742'-8881'-
with 24, 0.40"
holes. Frac
Gallup 7th
stage with
205,000# ,
20/40 PSA
Sand

Gallup 9th:
8212'-8368'- with
24, 0.40" holes.
Frac Gallup 9th
stage with
195,580#, 20/40
PSA Sand

Gallup 10th:
7941'-8368'-
with 24, 0.40"
holes. Frac
Gallup 10th
stage with
202,560#,
20/40 PSA
Sand

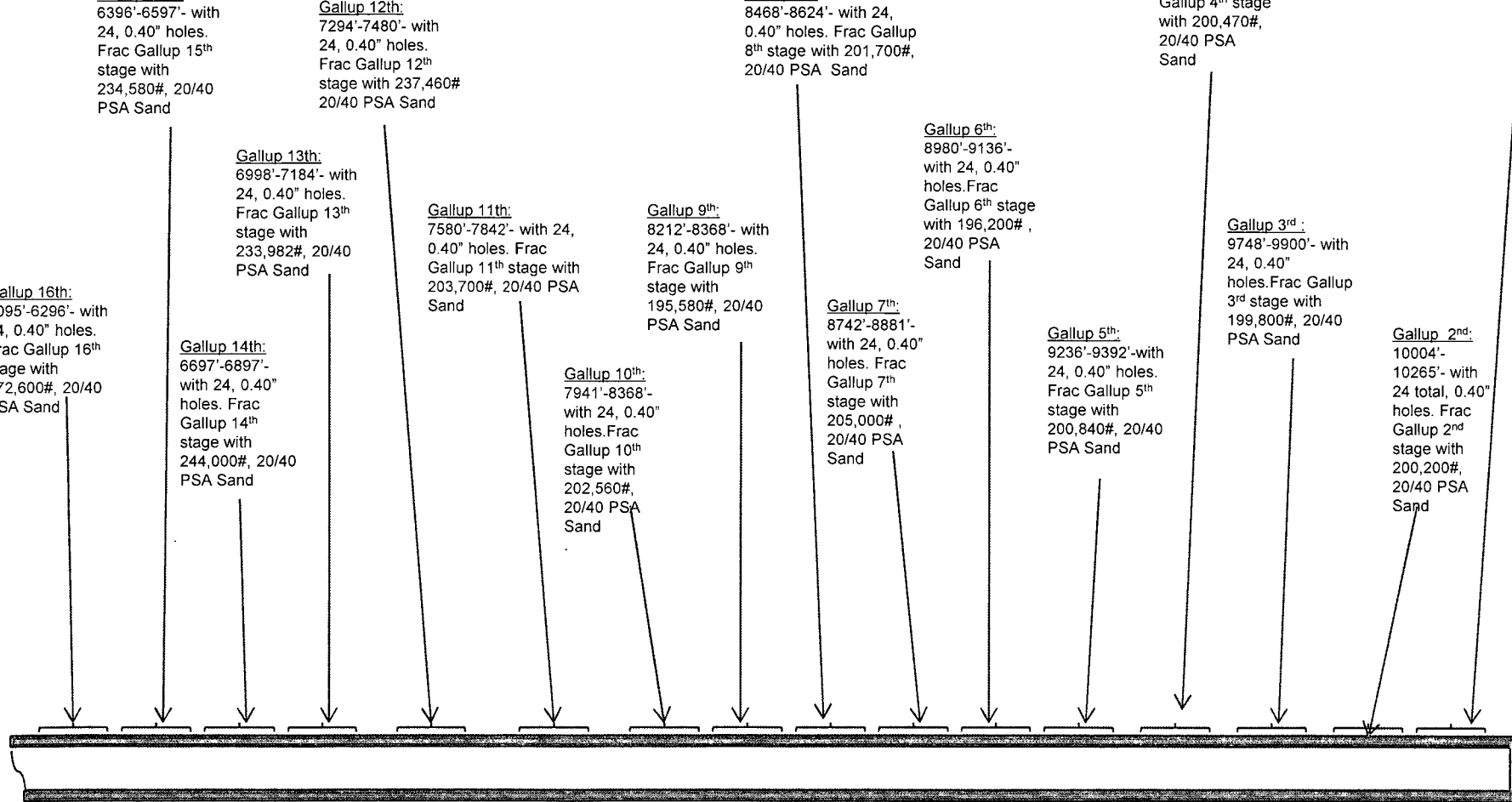
Gallup 11th:
7580'-7842'- with 24,
0.40" holes. Frac
Gallup 11th stage with
203,700#, 20/40 PSA
Sand

Gallup 13th:
6998'-7184'- with
24, 0.40" holes.
Frac Gallup 13th
stage with
233,982#, 20/40
PSA Sand

Gallup 14th:
6697'-6897'-
with 24, 0.40"
holes. Frac
Gallup 14th
stage with
244,000#, 20/40
PSA Sand

Gallup 15th:
6396'-6597'- with
24, 0.40" holes.
Frac Gallup 15th
stage with
234,580#, 20/40
PSA Sand

Gallup 16th:
6095'-6296'- with
24, 0.40" holes.
Frac Gallup 16th
stage with
272,600#, 20/40
PSA Sand



See page 1 for upper portion of hole

OIL CONS. DIV DIST. 3
NOV 18 2014

NE CHACO COM #256H

Chaco Unit NE HZ (oil)(page 1)

Spud: 6/18/14

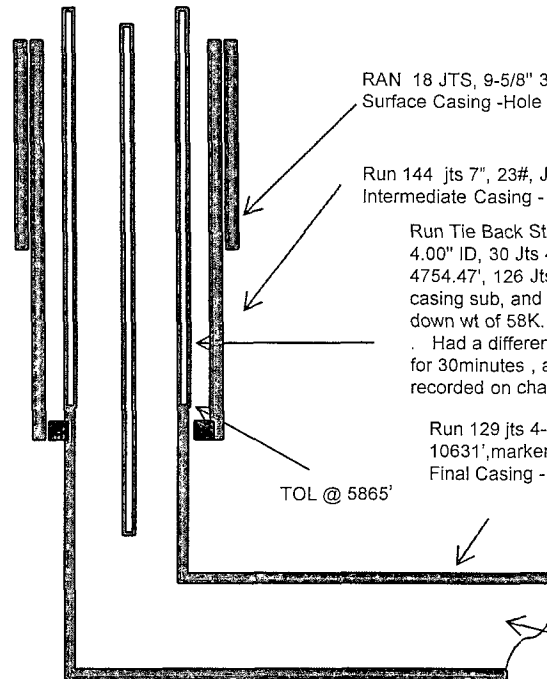
Completed: 10/19/14

SHL: 253' FSL & 196' FWL
SW/4 SW/4 Section 18(M), T23N, R6W

BHL: 290' FNL & 230' FEL
NE/4 NE/4 Section 19 (A), T23N, R 7W

RIO ARRIBA., NM
Elevation: 6938'
API: 30-039-31236

Tops	MD	TVD
Ojo Alamo	1335'	1329'
Kirtland	1626'	1616'
Pictured Cliffs	1932'	1919'
Lewis	2004'	1989'
Chacra	2344'	2326'
Cliff House	3427'	3397'
Menefee	3439'	3408'
Point Lookout	4233'	4195'
Mancos	4398'	4358'
Gallup	4818'	4776'



RAN 18 JTS, 9-5/8" 36#, L/S ST&C csg f, CSG SET @ 400', FC @ 354'
Surface Casing -Hole Size: 12-1/4"

Run 144 jts 7", 23#, J-55, LT&C csg. Landed @ 6020' (TVD 5513'), FC @ 5976'
Intermediate Casing - Hole Size: 8-3/4"

Run Tie Back String-No-Go, and 4 1/2" 11.6# N80 casing as follows; Seal Assembly with No-Go 5.85" OD 4.00" ID, 30 Jts 4 1/2" 11.6# N80 casing, 10.08' X 4 1/2" 11.6# N80 casing sub/ Marker Jt set @ 4754.39 - 4754.47', 126 Jts 4 1/2" 11.6# N80 casing, 14.66', 19.7' casing subs, 1 Jt 4 1/2" 11.6# N80 casing, 1 X 2.50' casing sub, and casing hanger. Total length of all Tubulars ran in well = 5857.54' . Had an up wt of 69K and down wt of 58K. Landed with 40K on liner top and leaving 13K on hanger. Total with KB difference is 5853.80' . Had a difference of 3.14' from liner hanger depth @ 5864.9' Antelope tested 4 1/2" casing to 1500 psi, held for 30 minutes , and recorded on chart. Antelope tested 4 1/2" X 7' to 1500 psi, held for 30 minutes, and recorded on chart. Annulus tested good , and 4 1/2" had a psi loss of 100 psi in 30 minutes.

Run 129 jts 4-1/2", 11.6#, N-80, LT&C. CSG set @ 10730' (TVD 5488'), LC @ 10649', RSI tools 10631', marker jts @ 7474' & 9044', TOL @ 5865'
Final Casing - Hole Size: 6-1/8"

TOL @ 5865'

Land well at 5728' w/ 14.5' KB as follows 1/2 MS, 1 Jt of 2.375" J55 4.7lb 8rnd EUE tbg, 1.50" FN at 5697', 177 Jts of 2.375" J55 4.7lb 8rnd EUE tbg 178 jts total

TD: 10740' MD
TVD: 5488'
PBTD: 10649' MD

HOLE SIZE	CASING	CEMENT	VOLUME	CMT TOP
12-1/4"	9-5/8"	245 sx	222 cu.ft.	Surface
8-3/4"	7"	876 sx	1461 cu. ft.	Surface
6-1/8"	4-1/2"	140 sx	536 cu. ft.	TOL 5865'

CONFIDENTIAL

OIL CONS. DIV DIST. 3

OCT 30 2014

Lg 10/23/14

NE CHACO COM #256H Chaco Unit NE HZ (oil)

(page 2 – lateral with completion)

Gallup 1st:
10385'-11571' +
RSI TOOL @
10634' with
201,000 # 20/40
PSA Sand

Gallup 4th:
9492'-9649'-
with 24, 0.40"
holes. Frac
Gallup 4th stage
with 200,470#,
20/40 PSA
Sand

Gallup 6th:
8980'-9136'-
with 24, 0.40"
holes. Frac
Gallup 6th stage
with 196,200# ,
20/40 PSA
Sand

Gallup 3rd :
9748'-9900'- with
24, 0.40"
holes. Frac Gallup
3rd stage with
199,800#, 20/40
PSA Sand

Gallup 2nd:
10004'-
10265'- with
24 total, 0.40"
holes. Frac
Gallup 2nd
stage with
200,200#,
20/40 PSA
Sand

Gallup 5th:
9236'-9392'-with
24, 0.40" holes.
Frac Gallup 5th
stage with
200,840#, 20/40
PSA Sand

Gallup 7th:
8742'-8881'-
with 24, 0.40"
holes. Frac
Gallup 7th
stage with
205,000# ,
20/40 PSA
Sand

Gallup 8th:
8468'-8624'- with 24,
0.40" holes. Frac Gallup
8th stage with 201,700#,
20/40 PSA Sand

Gallup 9th:
8212'-8368'- with
24, 0.40" holes.
Frac Gallup 9th
stage with
195,580#, 20/40
PSA Sand

Gallup 10th:
7941'-8368'-
with 24, 0.40"
holes. Frac
Gallup 10th
stage with
202,560#,
20/40 PSA
Sand

Gallup 11th:
7580'-7842'- with 24,
0.40" holes. Frac
Gallup 11th stage with
203,700#, 20/40 PSA
Sand

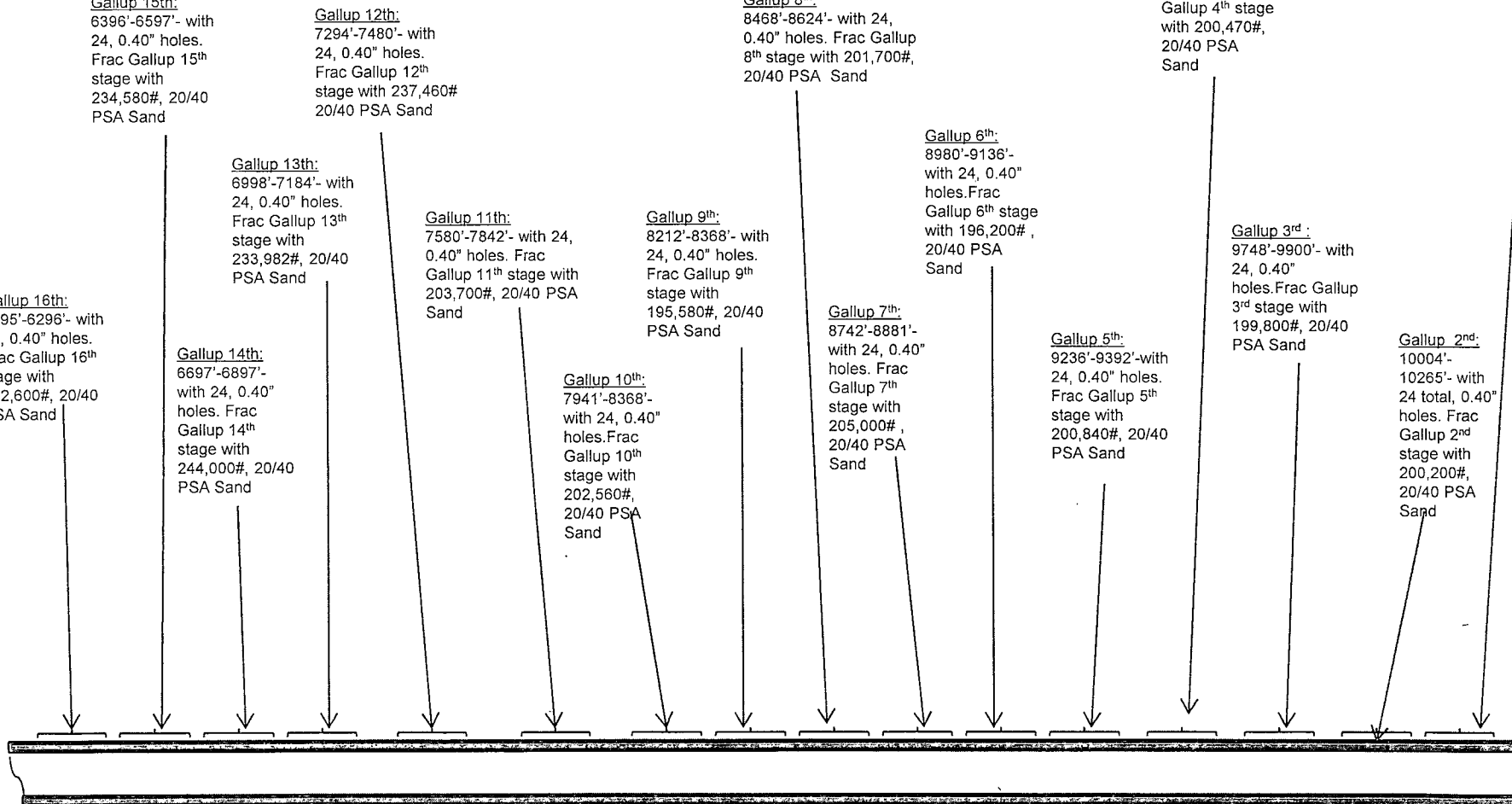
Gallup 12th:
7294'-7480'- with
24, 0.40" holes.
Frac Gallup 12th
stage with 237,460#
20/40 PSA Sand

Gallup 13th:
6998'-7184'- with
24, 0.40" holes.
Frac Gallup 13th
stage with
233,982#, 20/40
PSA Sand

Gallup 14th:
6697'-6897'-
with 24, 0.40"
holes. Frac
Gallup 14th
stage with
244,000#, 20/40
PSA Sand

Gallup 16th:
6095'-6296'- with
24, 0.40" holes.
Frac Gallup 16th
stage with
272,600#, 20/40
PSA Sand

Gallup 15th:
6396'-6597'- with
24, 0.40" holes.
Frac Gallup 15th
stage with
234,580#, 20/40
PSA Sand



See page 1 for upper portion of hole

OIL CONS. DIV DIST. 3
OCT 30 2014