

Chaco 2307-13I #204H

Chaco Unit NE HZ (oil) (page 1)

Spud: 6/30/14

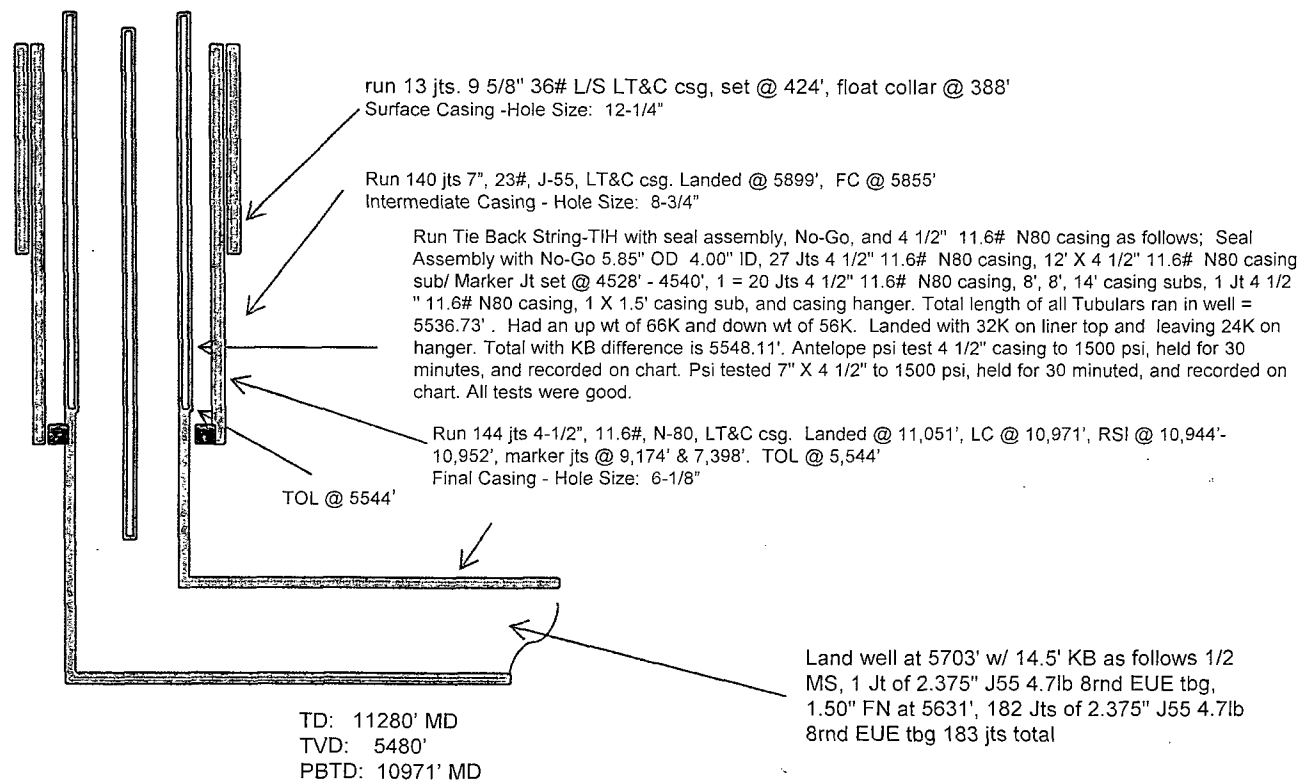
Completed: 9/26/14

SHL: 1740' FSL & 274' FEL
NE/4 SE/4 Section 13 (I), T23N, R7W

BHL: 871' FSL & 331' FWL
SW/4 SW/4 Section 17 (M), T23N, R 7W

RIO ARRIBA NM
Elevation: 6926'
API: 30-039-31245

Tops	MD	TVD
Ojo Alamo	1323'	1321'
Kirtland	1633'	1629'
Pictured Cliffs	1922'	1916'
Lewis	2027'	2021'
Chacra	2339'	2334'
Cliff House	3423'	3418'
Menefee	3456'	3451'
Point Lookout	4209'	4204'
Mancos	7391'	4386'
Gallup	4789'	4784'



CONFIDENTIAL

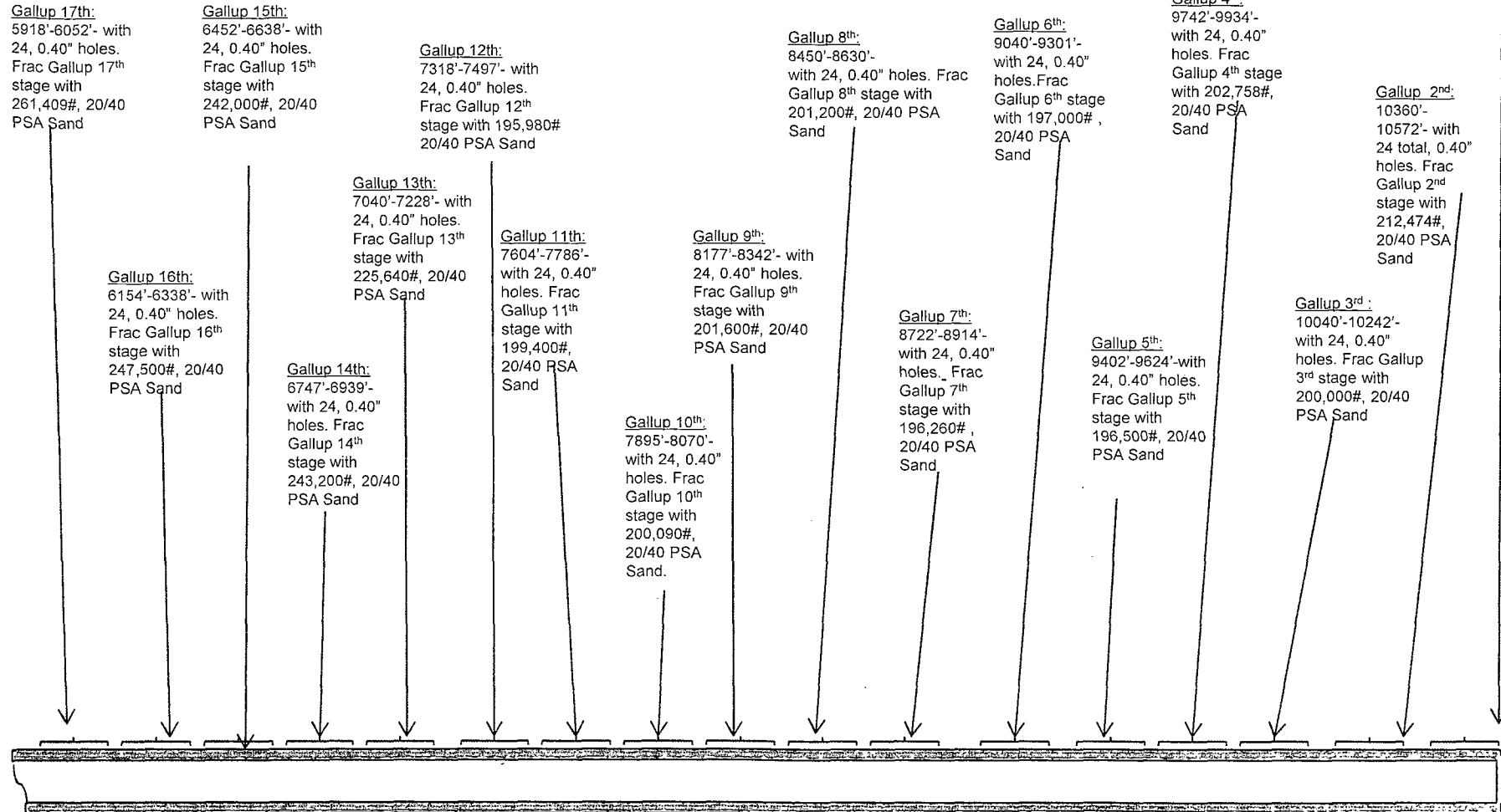
HOLE SIZE	CASING	CEMENT	VOLUME	CMT TOP
12-1/4"	9-5/8"	245 sx	222 cu.ft.	Surface
8-3/4"	7"	820 sx	1461 cu. ft.	Surface
6-1/8"	4-1/2"	405 sx	556 cu. ft.	TOL 5544'

Lg 10/1/14

AV

Chaco 2307-13I #204H Chaco Unit NE HZ (oil) (page 2 – lateral with completion)

Gallup 1st:
10698'-10792' +
RSI TOOL @
10951' with 18,
0.40" holes with
201,000 # 20/40
PSA Sand.



See page 1 for upper portion of hole