

# Chaco 2306-19E #189H LYBROOK GALLUP Horizontal

(page 1)

Spud: 4/7/14

Completed: 8/19/14

SHL: 1757' FNL & 303' FWL  
SW/4 NW/4 Section 19 (E), T23N, R6W

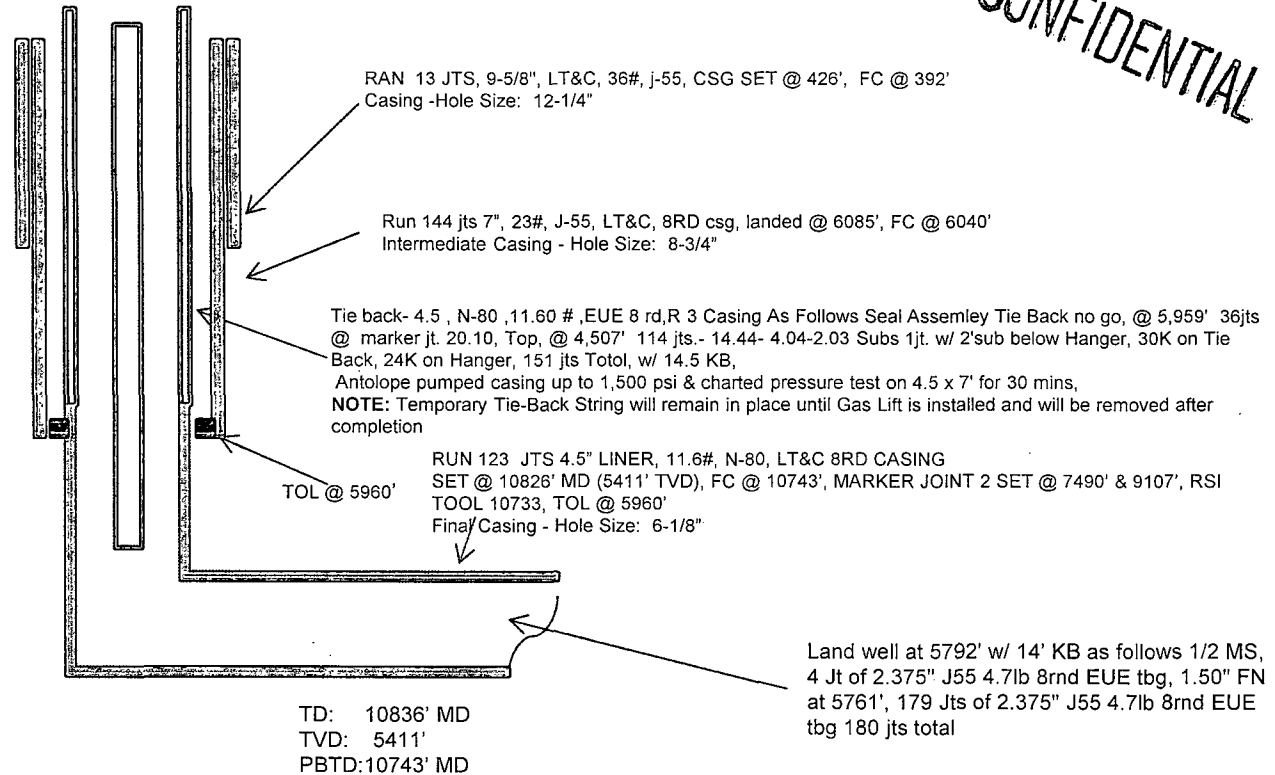
BHL: 2196' FNL & 227' FWL  
SW/4 NW/4 Section 24 (E), T23N, R 7W

SANDOVAL NM

Elevation: 6965'

API: 30-043-21188

Tops	MD	TVD
Ojo Alamo	1324'	1314'
Kirtland	1628'	1604'
Pictured Cliffs	1950'	1907'
Lewis	2052'	2002'
Chacra	2393'	2320'
Cliff House	3573'	3412'
Menefee	3595'	3433'
Point Lookout	4367'	4178'
Mancos	4555'	4364'
Gallup	4975'	4783'



PROD SEP 23 '14  
OIL CONS. DIV.  
DIST. 3  
**CONFIDENTIAL**

HOLE SIZE	CASING	CEMENT	VOLUME	CMT TOP
12-1/4"	9-5/8"	245 sx	222 cu.ft.	Surface
8-3/4"	7"	842 sx	1249 cu. ft.	Surface
6-1/8"	4-1/2"	390 sx	553 cu. ft.	TOL 5960'

Lg 9/16/14

AV

2

# Chaco 2306-19E #189H LYBROOK GALLUP Horizontal

(page 2 – lateral with completion)

Gallup 13th:  
7006'-7216'- with  
24, 0.40"  
holes. Frac Gallup  
13<sup>th</sup> stage with  
301,000#, 20/40  
PSA Sand

Gallup 16th:  
6123'-6325'- with  
24, 0.40" holes. Frac  
Gallup 16<sup>th</sup> stage  
with 300,000#,  
20/40 PSA Sand

Gallup 11th:  
7695'-7975'- with 24,  
0.40" holes. Frac  
Gallup 11<sup>th</sup> stage with  
200,000#, 20/40 PSA  
Sand

Gallup 9th:  
8350'-8500'- with  
24, 0.40" holes.  
Frac Gallup 9<sup>th</sup>  
stage with  
197,500#, 20/40  
PSA Sand

Gallup 10th:  
8074'-8246'-  
with 24, 0.40"  
holes. Frac  
Gallup 10<sup>th</sup>  
stage with  
199,500#,  
20/40 PSA  
Sand

Gallup 7th:  
8857'-9014'-  
with 24, 0.40"  
holes. Frac  
Gallup 7<sup>th</sup>  
stage with  
201,500#, 20/4  
0 PSA Sand

Gallup 6th:  
9113'-9315'-  
with 24, 0.40"  
holes. Frac  
Gallup 6<sup>th</sup> stage  
with 199,700#,  
20/40 PSA  
Sand

Gallup 3rd:  
10111'-10268'-  
with 24, 0.40"  
holes. Frac Gallup  
3<sup>rd</sup> stage with  
200,300#, 20/40  
PSA Sand

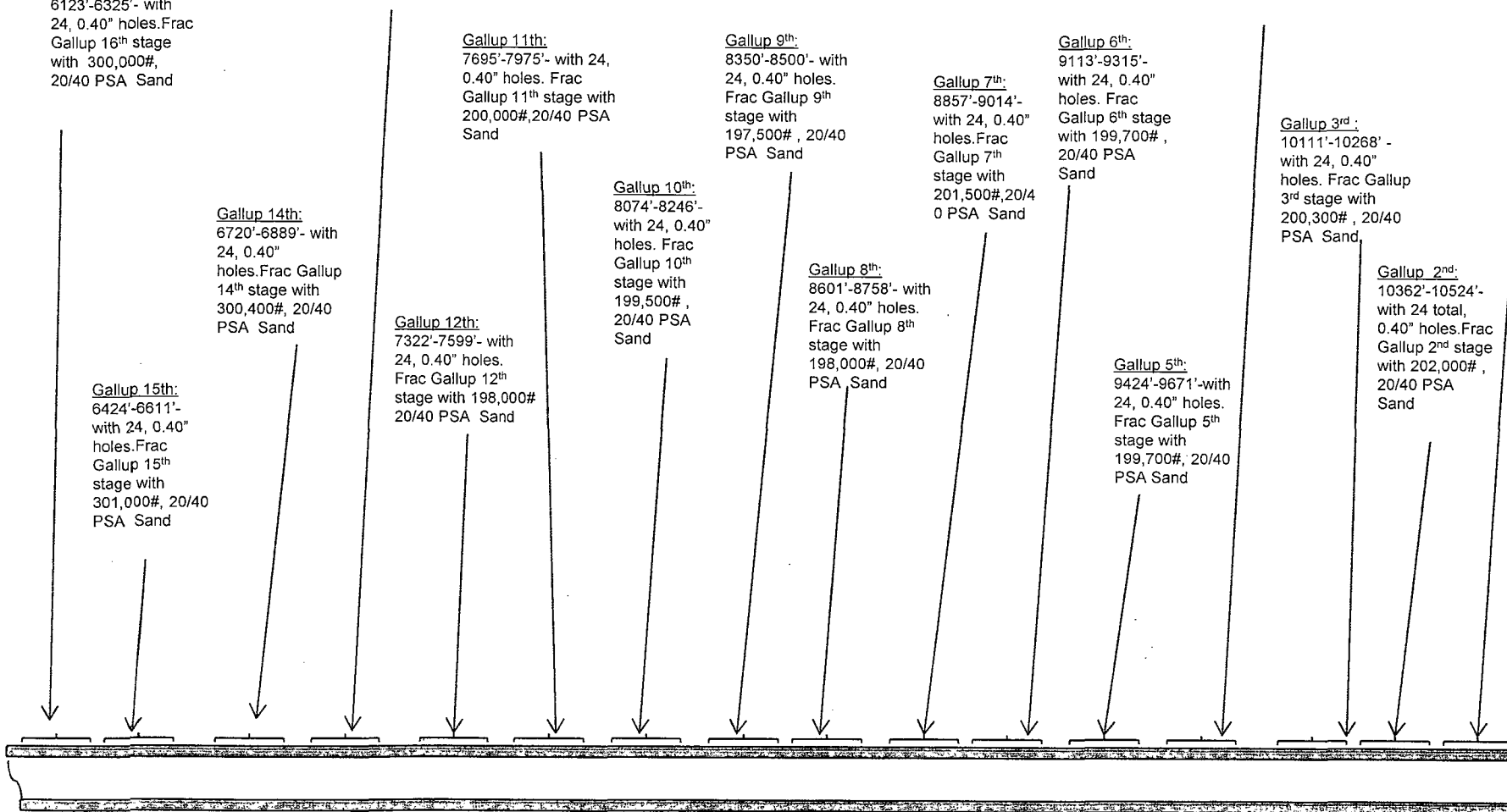
Gallup 2nd:  
10362'-10524'-  
with 24 total,  
0.40" holes. Frac  
Gallup 2<sup>nd</sup> stage  
with 202,000#,  
20/40 PSA  
Sand

Gallup 5th:  
9424'-9671'-with  
24, 0.40" holes.  
Frac Gallup 5<sup>th</sup>  
stage with  
199,700#, 20/40  
PSA Sand

Gallup 12th:  
7322'-7599'- with  
24, 0.40" holes.  
Frac Gallup 12<sup>th</sup>  
stage with 198,000#  
20/40 PSA Sand

Gallup 14th:  
6720'-6889'- with  
24, 0.40"  
holes. Frac Gallup  
14<sup>th</sup> stage with  
300,400#, 20/40  
PSA Sand

Gallup 15th:  
6424'-6611'-  
with 24, 0.40"  
holes. Frac  
Gallup 15<sup>th</sup>  
stage with  
301,000#, 20/40  
PSA Sand



See page 1 for upper portion of hole

RCVD SEP 23 '14  
OIL CONS. DIV.

DIST. 3