

# HEROS #3H BASIN MC Horizontal

(page 1)

Spud: 7/8/14

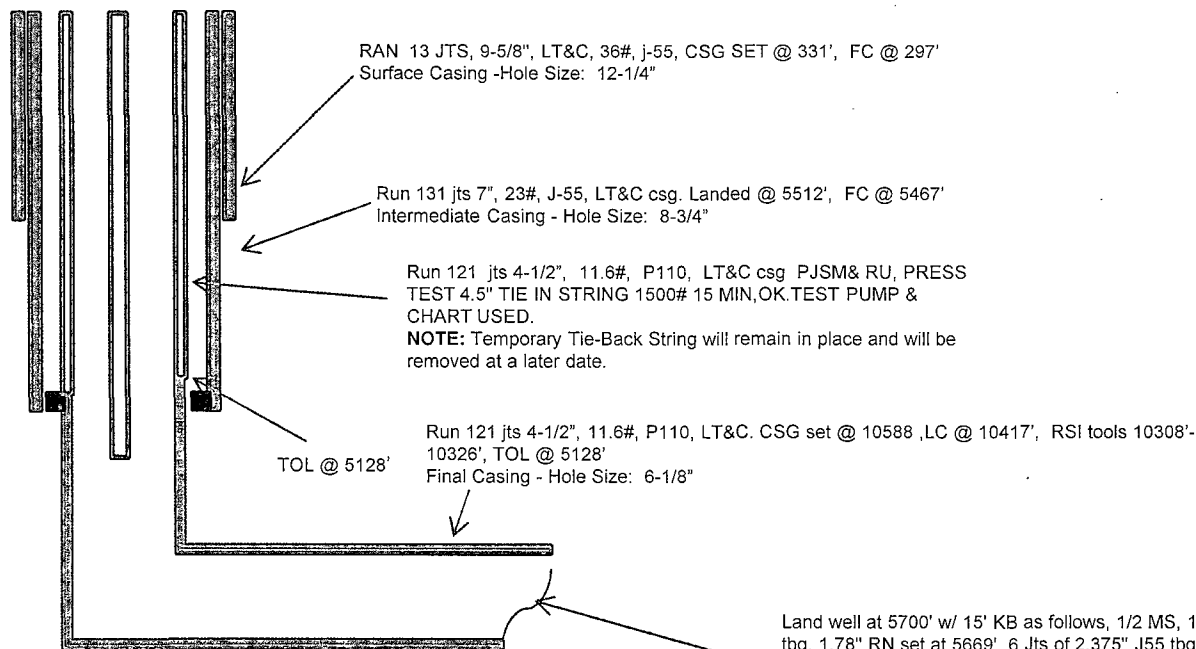
Completed: 9/9/14

SHL: 2216' FSL & 74' FWL  
NW/4 SW/4 Section 3(L), T23N, R8W

BHL: 2254' FSL & 250' FWL  
NW/4 SW/4 Section 4 (L), T23N, R 8W

SAN JUAN., NM  
Elevation: 6879'  
API: 30-045-35538

Tops	MD	TVD
Chacra	2065'	2065'
Cliff House	3165'	3154'
Menefee	3206'	3195'
Point Lookout	4062'	4038'
Mancos	4259'	4231'
Gallup	4632'	4599'



TD: 10419' MD  
TVD: 5291'  
PBSD:10329' MD

Land well at 5700' w/ 15' KB as follows, 1/2 MS, 1 Jt of 2.375" J55 tbg, 1.78" RN set at 5669', 6 Jts of 2.375" J55 tbg, 4.5" Weatherford Arrowset 1-X Pkr set at 5480' w/ 14K in tension, On/Off tool w/ 1.81" FN set at 5479', 4' Pup Jt, 1 Jt of 2.375" J55 tbg, GLV #1 set at 5440', 6 Jts of 2.375" J55 tbg, 1.87" XN set at 5257', 16 Jts of 2.375" J55 tbg, GLV #2 set at 4772', 16 Jts of 2.375" J55 tbg, GLV#3 set at 4284', 17 Jts of 2.375" J55 tbg, GLV #4 set at 3770', 20 Jts of 2.375" J55 tbg, GLV #5 set at 3165', 27 Jts of 2.375" J55 tbg, GLV #6 set at 2333', 31 Jts of 2.375" J55 tbg, GLV #7 set at 1342', set and lock down tbg hanger, Total 183 Jts of 2.375" J55 tbg, BO landing sub.

HOLE SIZE	CASING	CEMENT	VOLUME	CMT TOP
12-1/4"	9-5/8"	101sx	163 cu.ft.	Surface
8-3/4"	7"	640 sx	921cu.ft.	Surface
6-1/8"	4-1/2"	410 sx	585 cu. ft.	TOL 5128'

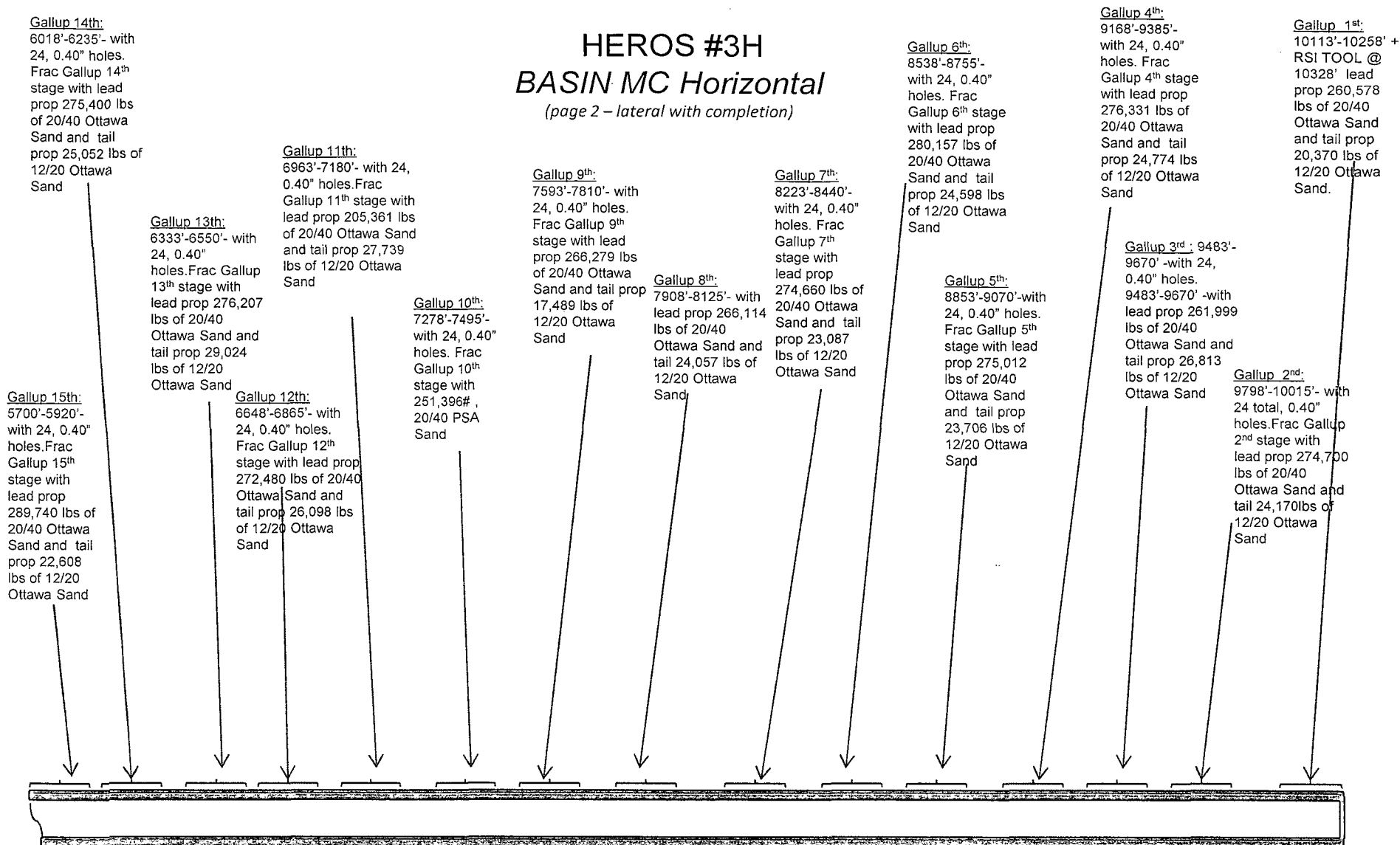
Lg 9/22/14

AV

# HEROS #3H

## BASIN MC Horizontal

(page 2 – lateral with completion)



See page 1 for upper portion of hole