

HEROS #2H

BASIN MC Horizontal

(page 1)

Spud: 6/26/14

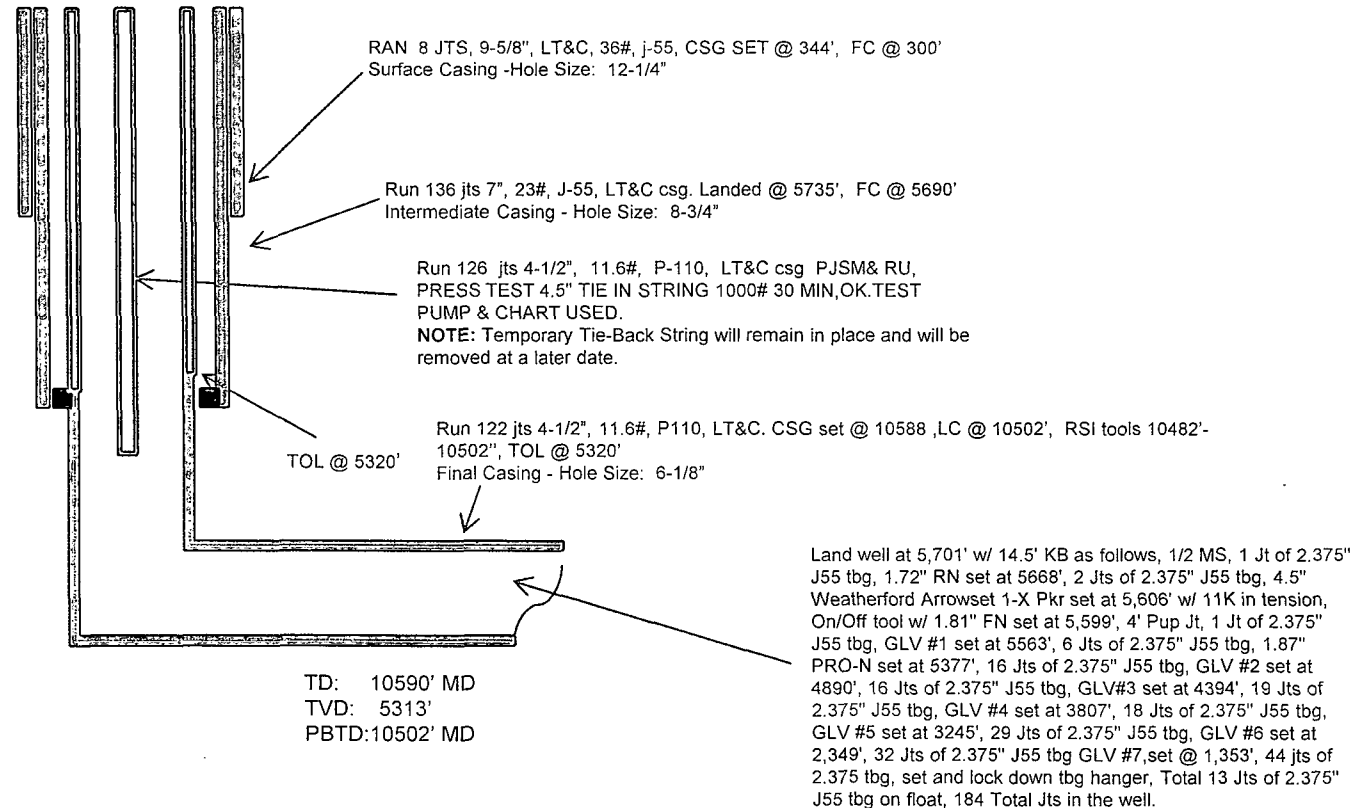
Completed: 9/11/14

SHL: 2268' FSL & 70' FWL
NW/4 SW/4 Section 3 (L), T23N, R8W

BHL: 1742' FNL & 260' FWL
SW/4 NW/4 Section 4 (E), T23N, R 8W

SAN JUAN., NM
Elevation: 6879'
API: 30-045-35539

Tops	MD	TVD
Chacra	2069'	2067'
Cliff House	3205'	3165'
Menefee	3245'	3204'
Point Lookout	4128'	4056'
Mancos	4315'	4237'
Gallup	4715'	4623'



HOLE SIZE	CASING	CEMENT	VOLUME	CMT TOP
12-1/4"	9-5/8"	225 sx	259 cu.ft.	Surface
8-3/4"	7"	620 sx	997 cu. ft.	Surface
6-1/8"	4-1/2"	410 sx	583 cu. ft.	TOL 5320'

Lg 9/22/14

HEROS #2H

BASIN MC Horizontal

(page 2 – lateral with completion)

Gallup 15th:
5865'-6084'-with
24, 0.40"
holes. Frac Gallup
15th stage with
228,706#, 20/40
PSA Sand

Gallup 11th:
7133'-7352'- with 24,
0.40" holes. Frac
Gallup 11th stage with
238,302#, 20/40 PSA
Sand

Gallup 9th:
7767'-7986'- with
24, 0.40" holes.
Frac Gallup 9th
stage with
205,700#, 20/40
PSA Sand

Gallup 7th:
8401'-8620'-
with 24, 0.40"
holes. Frac
Gallup 7th
stage with
206,532#, 20/4
0 PSA Sand

Gallup 8th:
8084'-8303'- with
24, 0.40" holes.
Frac Gallup 8th
stage with
206,260#, 20/40
PSA Sand

Gallup 6th:
8718'-8937'-
with 24, 0.40"
holes. Frac
Gallup 6th stage
with 209,816#,
20/40 PSA
Sand

Gallup 5th:
9035'-9254'-with
24, 0.40" holes.
Frac Gallup 5th
stage with
195,960#, 20/40
PSA Sand

Gallup 4th:
9352'-9570'-
with 24, 0.40"
holes. Frac
Gallup 4th stage
with 200,019#,
20/40 PSA
Sand

Gallup 1st:
10300'-10436' +
RSI TOOL @
10501' with 18,
0.40" holes
10300'-10436' -
with 190,466 #
20/40 PSA
Sand.

Gallup 3rd:
9930'-9886' -with
24, 0.40" holes.
Frac Gallup 3rd
stage with
198,552#, 20/40
PSA Sand

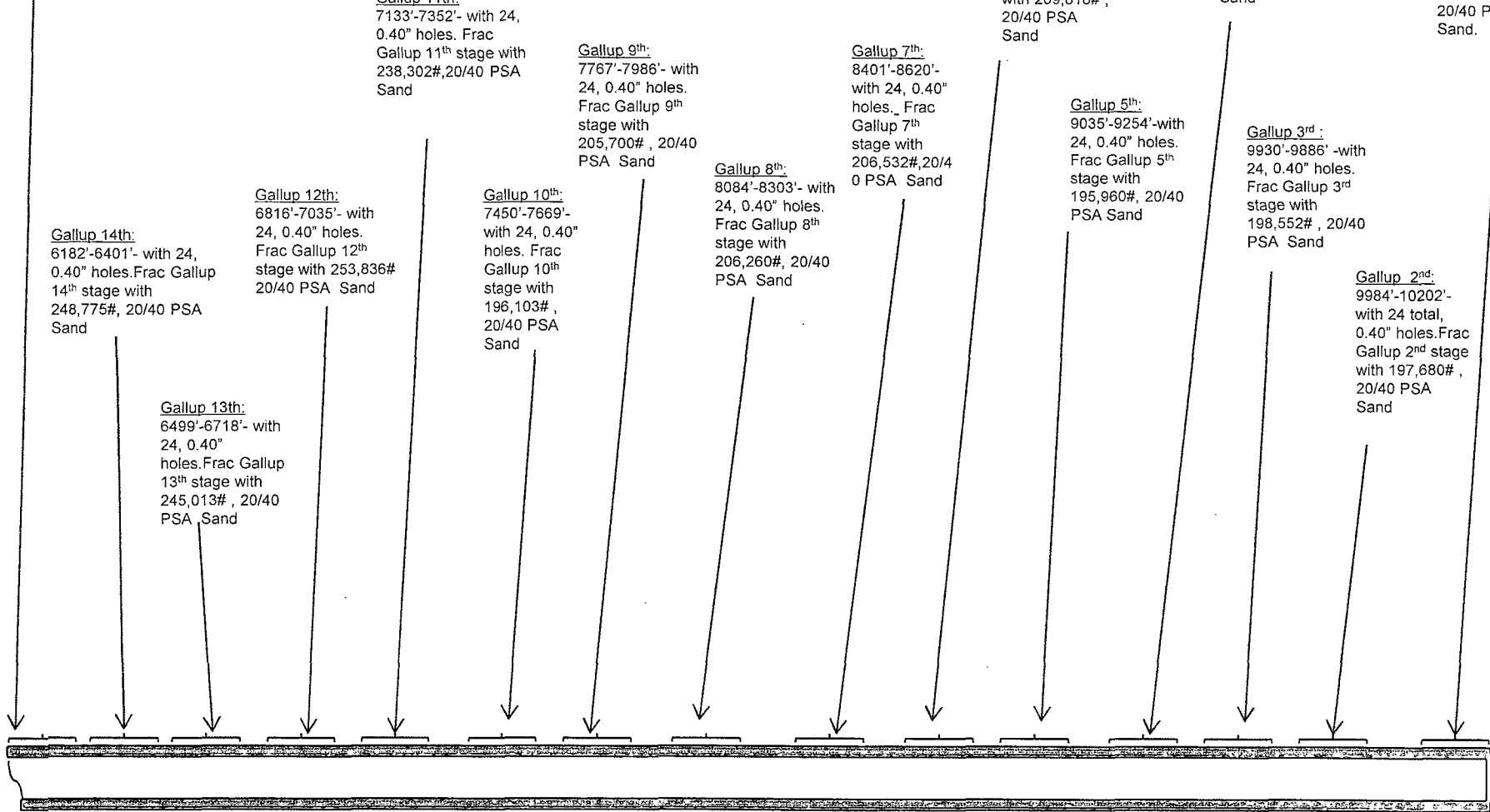
Gallup 2nd:
9984'-10202'-
with 24 total,
0.40" holes. Frac
Gallup 2nd stage
with 197,680#,
20/40 PSA
Sand

Gallup 12th:
6816'-7035'- with
24, 0.40" holes.
Frac Gallup 12th
stage with 253,836#
20/40 PSA Sand

Gallup 10th:
7450'-7669'-
with 24, 0.40"
holes. Frac
Gallup 10th
stage with
196,103#,
20/40 PSA
Sand

Gallup 14th:
6182'-6401'- with 24,
0.40" holes. Frac Gallup
14th stage with
248,775#, 20/40 PSA
Sand

Gallup 13th:
6499'-6718'- with
24, 0.40"
holes. Frac Gallup
13th stage with
245,013#, 20/40
PSA Sand



See page 1 for upper portion of hole