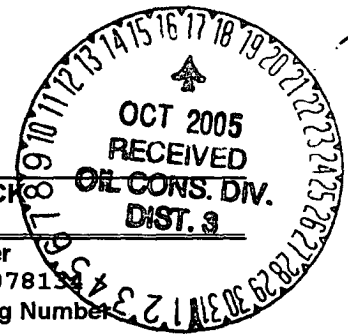


UNITED STATES
DEPARTMENT OF THE INTERIOR
BUREAU OF LAND MANAGEMENT



APPLICATION FOR PERMIT TO DRILL, DEEPEN, OR PLUG BACK

1a. Type of Work DRILL	RECEIVED 070 FARMINGTON NM	5. Lease Number NMSF-078134 Unit Reporting Number
1b. Type of Well GAS		6. If Indian, All. or Tribe
2. Operator BURLINGTON RESOURCES Oil & Gas Company		7. Unit Agreement Name
3. Address & Phone No. of Operator PO Box 4289, Farmington, NM 87499 (505) 326-9700		8. Farm or Lease Name Aztec A 9. Well Number #100
4. Location of Well Unit M (SWSW), 1005' FSL, 840' FWL Latitude 36° 52.7976'N Longitude 107° 59.0417'W	10. Field, Pool, Wildcat Basin Fruitland Coal/Fruitland Sands/ Aztec Blanco Pictured Cliffs 11. Sec., Twn, Rge, Mer. (NMPM) Sec. 22, T31N, R11W API # 30-045- 33184	
14. Distance in Miles from Nearest Town	12. County San Juan	13. State NM
15. Distance from Proposed Location to Nearest Property or Lease Line 840'		
16. Acres in Lease	17. Acres Assigned to Well 160 SW PC 160 SW FS 320 S2 FC	
18. Distance from Proposed Location to Nearest Well, Drig, Compl, or Applied for on this Lease 55' - Aztec A #1		
19. Proposed Depth 2665'	20. Rotary or Cable Tools Rotary	
21. Elevations (DF, FT, GR, Etc.) 5848' GL	22. Approx. Date Work will Start	
23. Proposed Casing and Cementing Program See Operations Plan attached		
24. Authorized by: <u>Armando Sandoval</u> Regulatory Compliance Assistant II	<u>6-20-05</u> Date	

PERMIT NO.

APPROVAL DATE

APPROVED BY

TITLE

DATE

Archaeological Report attached

Threatened and Endangered Species Report attached

NOTE: This format is issued in lieu of U.S. BLM Form 3160-3

Title 18 U.S.C. Section 1001, makes it a crime for any person knowingly and willfully to make to any department or agency of the United States any false, fictitious or fraudulent statements or presentations as to any matter within its jurisdiction.

NMOC

DRILLING OPERATIONS AUTHORIZED ARE
SUBJECT TO COMPLIANCE WITH ATTACHED
"GENERAL REQUIREMENTS".

DISTRICT I
1625 N. French Dr., Hobbs, N.M. 88240

DISTRICT II
611 South First, Artesia, N.M. 88210

DISTRICT III
1000 Rio Brazos Rd., Aztec, N.M. 87410

DISTRICT IV
2040 South Pacheco, Santa Fe, NM 87505

State of New Mexico
Energy, Minerals & Natural Resources Department

Form C-102
Revised August 15, 2000

OIL CONSERVATION DIVISION

2040 South Pacheco
Santa Fe, NM 87505

Submit to Appropriate District Office
State Lease - 4 Copies
Fee Lease - 3 Copies

☐ AMENDED REPORT

WELL LOCATION AND ACREAGE DEDICATION PLAT

¹ API Number 30-045-33184	² Pool Code 71629	³ Pool Name OTO FARMINGTON Basin Fruitland Coal/ Fruitland Sands/Pictured Cl
⁴ Property Code 681	⁵ Property Name AZTEC A	⁶ Well Number 100
⁷ OGED No. 14538	⁸ Operator Name BURLINGTON RESOURCES OIL AND GAS COMPANY LP	⁹ Elevation 5848'

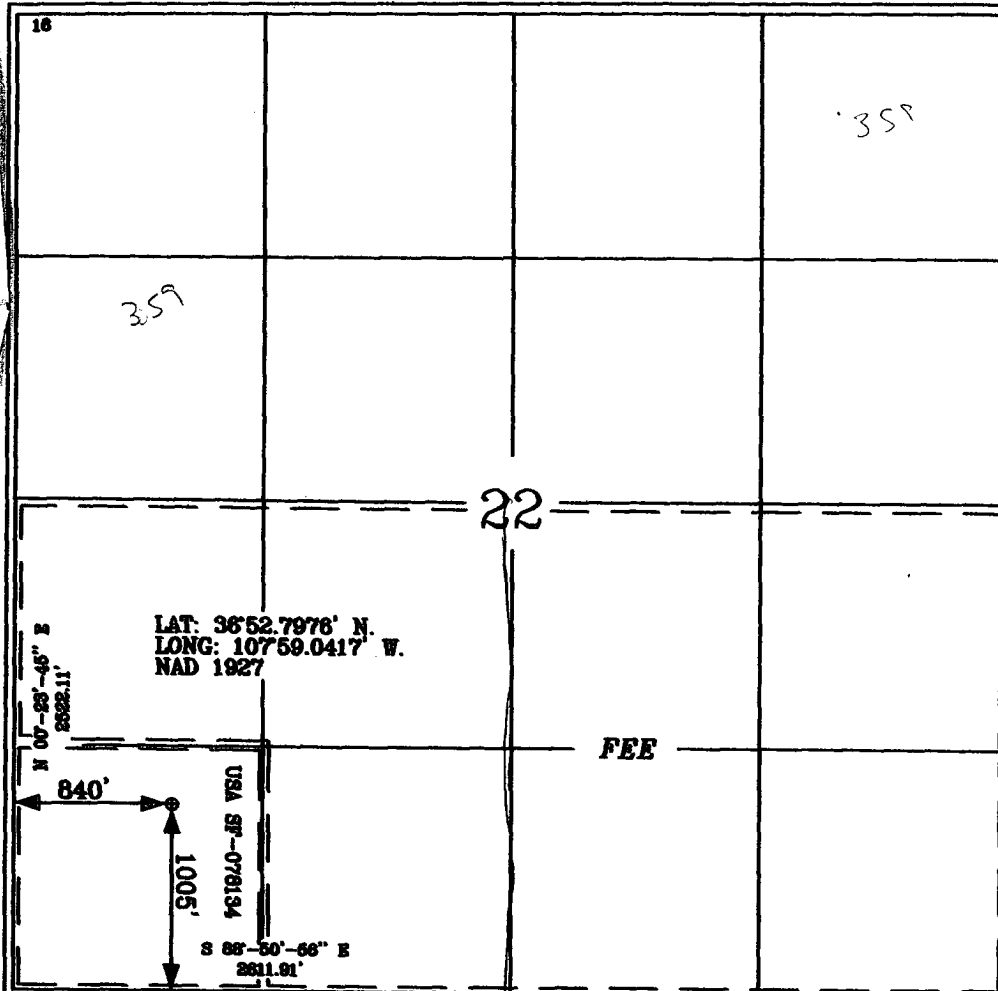
¹⁰ Surface Location

UL or lot no.	Section	Township	Range	Lot Idn	Feet from the	North/South line	Feet from the	East/West line	County
M	22	31-N	11-W		1005'	SOUTH	840'	WEST	SAN JUAN

¹¹ Bottom Hole Location If Different From Surface

UL or lot no.	Section	Township	Range	Lot Idn	Feet from the	North/South line	Feet from the	East/West line	County
¹² Dedicated Acres 320 S2 FC 160 SW FS		¹³ Joint or Infill 160 SW PC 160 SW FS		¹⁴ Consolidation Code		¹⁵ Order No.			

NO ALLOWABLE WILL BE ASSIGNED TO THIS COMPLETION UNTIL ALL INTERESTS HAVE BEEN CONSOLIDATED
OR A NON-STANDARD UNIT HAS BEEN APPROVED BY THE DIVISION



¹⁷ OPERATOR CERTIFICATION

I hereby certify that the information contained herein is true and complete to the best of my knowledge and belief.

Amanda Sandoval
Signature

Amanda Sandoval
Printed Name

Regulatory Assistant
Title

4-27-05
Date

¹⁸ SURVEYOR CERTIFICATION

I hereby certify that the well location shown on this plat was plotted from field notes of actual surveys made by me or under my supervision, and that the same is true and correct to the best of my belief.

4-21-05
Date of Survey

Signature and Seal of Professional Surveyor

15703
Certificate Number

Submit 3 Copies To Appropriate District Office

District I

1625 N. French Dr., Hobbs, NM 88240

District II

1301 W. Grand Ave., Artesia, NM 88210

District III

1000 Rio Brazos Rd., Aztec, NM 87410

District IV

1220 S. St. Francis Dr., Santa Fe, NM 87505

State of New Mexico

Energy, Minerals and Natural Resources

Form C-103

May 27, 2004

OIL CONSERVATION DIVISION

1220 South St. Francis Dr.

Santa Fe, NM 87505

WELL API NO.

30-045-

33184

5. Indicate Type of Lease

STATE ☐

FEE ☒

6. State Oil & Gas Lease No.

NMSF-078134

7. Lease Name or Unit Agreement Name

Aztec A

8. Well Number

100

9. OGRID Number

14538

10. Pool name or Wildcat

Basin Fruitland Coal/Fruitland Sands/Pictured Cliffs

SUNDRY NOTICES AND REPORTS ON WELLS
(DO NOT USE THIS FORM FOR PROPOSALS TO DRILL OR TO DEEPEN OR PLUG BACK TO A DIFFERENT RESERVOIR. USE "APPLICATION FOR PERMIT" (FORM C-101) FOR SUCH PROPOSALS.)

1. Type of Well:

Oil Well ☐

Gas Well ☒

Other

2. Name of Operator

BURLINGTON RESOURCES OIL & GAS COMPANY LP

3. Address of Operator

3401 E. 30TH STREET, FARMINGTON, NM 87402

4. Well Location

Unit Letter M : 1005 feet from the South line and 840 feet from the West line

Section 22 Township 31N Range 11W NMPM County San Juan, NM

11. Elevation (Show whether DR, RKB, RT, GR, etc.)

5848'

Pit or Below-grade Tank Application

☒ or Closure ☐

Pit type

Depth to Groundwater

>100

Distance from nearest fresh water well

>1000'

Distance from nearest surface water

>1000'

Pit Liner Thickness:

mil

Below-Grade Tank:

Volume

bbls;

Construction Material

12. Check Appropriate Box to Indicate Nature of Notice, Report or Other Data

NOTICE OF INTENTION TO:

PERFORM REMEDIAL WORK ☐

TEMPORARILY ABANDON ☐

PULL OR ALTER CASING ☐

PLUG AND ABANDON ☐

CHANGE PLANS ☐

MULTIPLE COMPL ☐

SUBSEQUENT REPORT OF:

REMEDIAL WORK ☐

COMMENCE DRILLING OPNS. ☐

CASING/CEMENT JOB ☐

ALTERING CASING ☐

P AND A ☐

OTHER:

New Drill ☒

OTHER: ☐

13. Describe proposed or completed operations. (Clearly state all pertinent details, and give pertinent dates, including estimated date of starting any proposed work). SEE RULE 1103. For Multiple Completions: Attach wellbore diagram of proposed completion or recompletion.

Burlington Resources proposes to construct a new drilling pit and an associated vent/flare pit. Based on Burlington's interpretation of the Ecosphere's risk ranking criteria, the new drilling pit will be a lined pit as detailed in Burlington's Revised Drilling / Workover Pit Construction / Operation Procedures dated November 11, 2004 on file at the NMOCD office. A portion of the vent/flare pit will be designed to manage fluids and that portion will be lined as per the risk ranking criteria. Burlington Resources anticipates closing these pits according to the Drilling / Workover Pit Closure Procedure dated August 2, 2004 on file at the NMOCD office.

I hereby certify that the information above is true and complete to the best of my knowledge and belief. I further certify that any pit or below-grade tank has been/will be constructed or closed according to NMOCD guidelines ☐, a general permit ☒ or an (attached) alternative OCD-approved plan ☐.

SIGNATURE

Amanda Sandoval

TITLE

Regulatory Assistant II

DATE

5/18/2005

Type or print name

Amanda Sandoval

E-mail address:

asandoval@br-inc.com

Telephone No.

326-9700

For State Use Only

APPROVED BY

[Signature]

TITLE

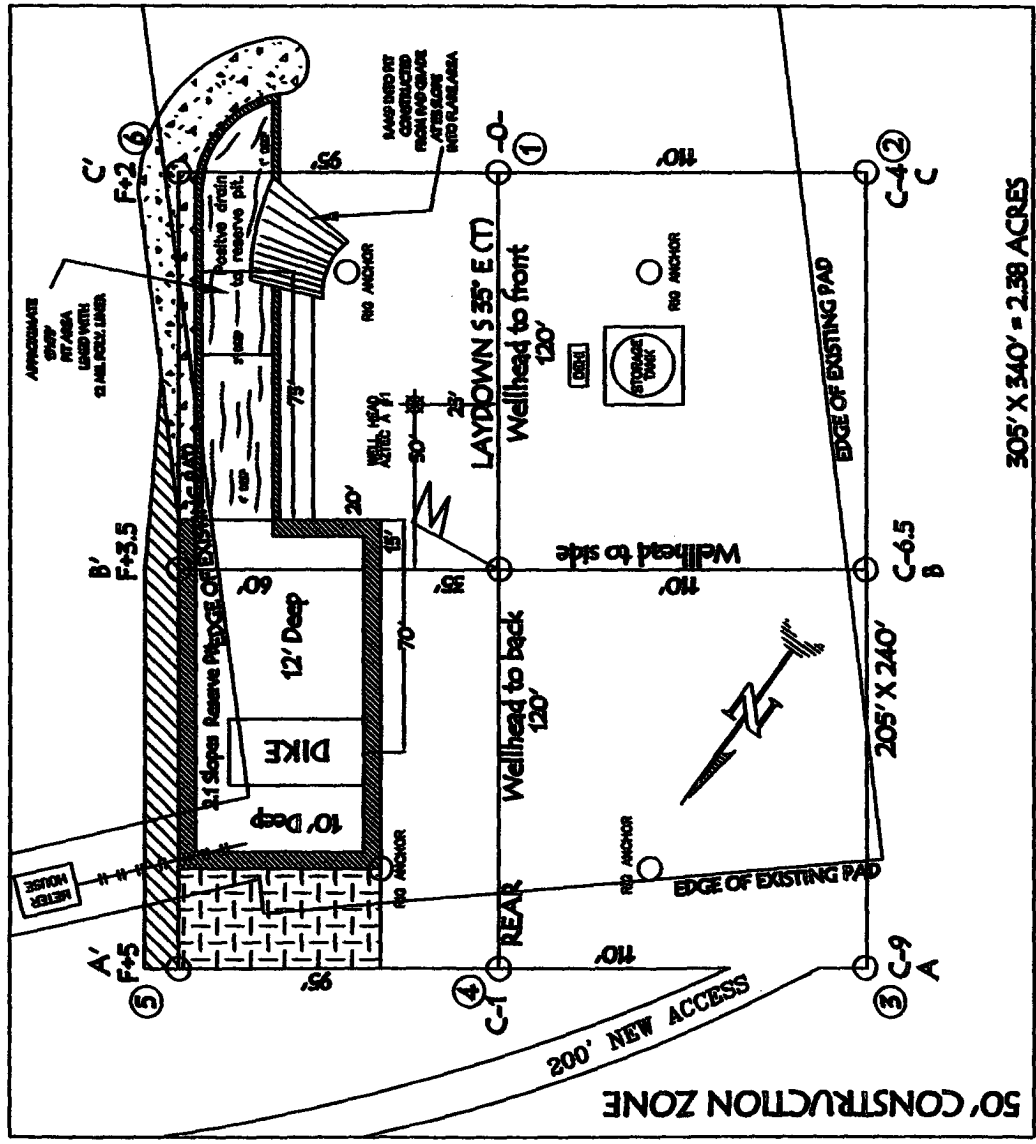
DEPUTY OIL & GAS INSPECTOR, DIST. 3

DATE

OCT 17 2005

Conditions of Approval (if any):

BURLINGTON RESOURCES OIL & GAS COMPANY LP AZTECA 100, 1005' FSL & 840' FWL SECTION 22, T-31-N, R-11-W, NMPM, SAN JUAN COUNTY, NM GROUND ELEVATION: 5848', DATE: APRIL 5, 2005



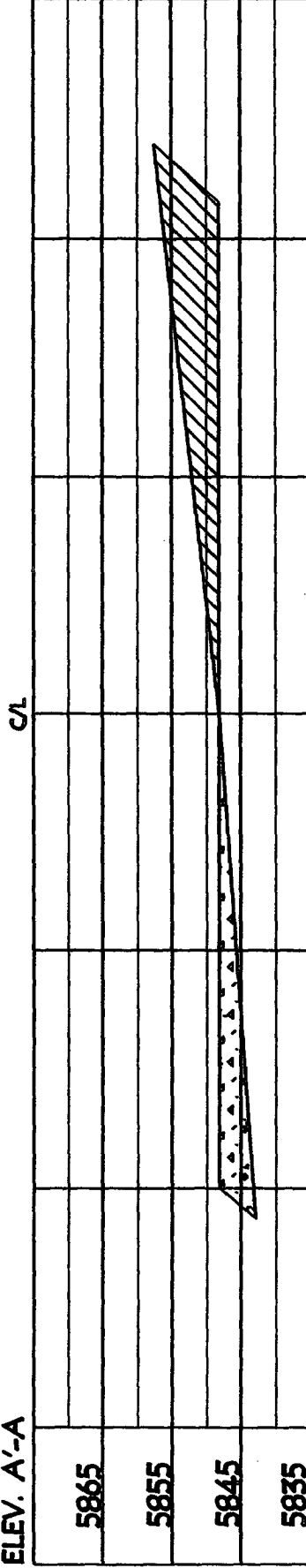
LATITUDE: 36° 52.7976' N LONGITUDE: 107° 59.0417' W NAD27

NOTE: VECTOR SURVEYS IS NOT LIABLE FOR UNDERGROUND UTILITIES OR PIPELINES.
 CONTRACTOR SHOULD CALL ONE-CALL FOR LOCATION OF ANY MARKED OR UNMARKED BURIED
 PIPELINES OR CABLES ON WELL PAD AND OR ACCESS ROAD AT LEAST TWO (2) WORKING DAYS PRIOR TO CONSTRUCTION.

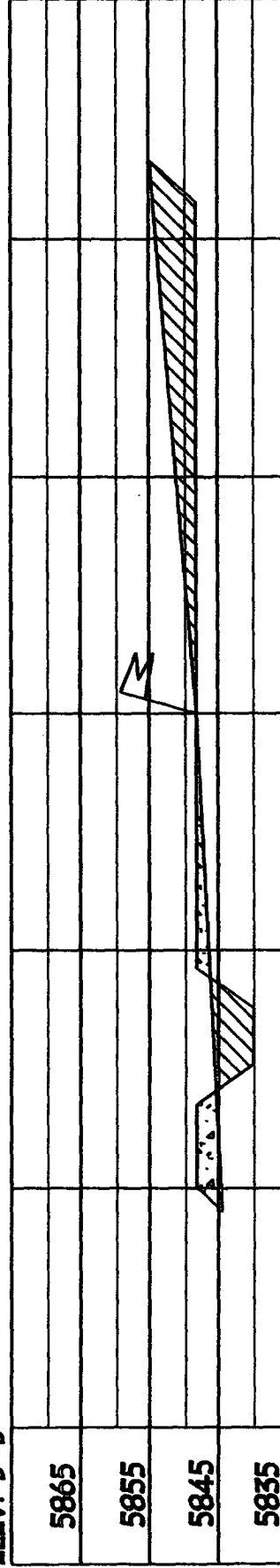
RESERVE PT DIKE, TO BE 8' ABOVE DEEP SIDE (OVERFLOW - 5' WIDE AND 1' ABOVE SHALLOW SIDE).

BURLINGTON RESOURCES OIL & GAS COMPANY LP
AZTEC A 100, 1005' FSL & 840' FWL
SECTION 22, T-31-N, R-11-W, NMPM, SAN JUAN COUNTY, NM
GROUND ELEVATION: 5848', DATE: APRIL 5, 2005

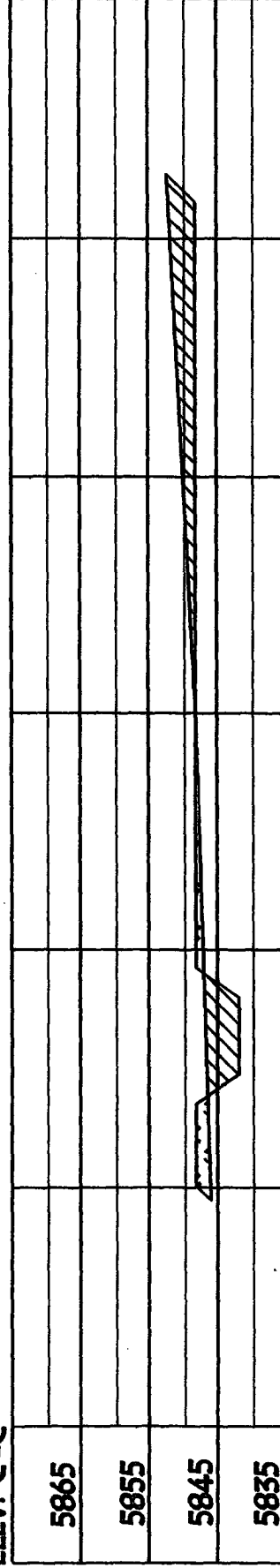
ELEV. A'-A



ELEV. B'-B



ELEV. C'-C



**NOTE: VECTOR SURVEYS IS NOT LIABLE FOR UNDERGROUND UTILITIES OR PIPELINES.
 CONTRACTOR SHOULD CALL ONE-CALL FOR LOCATION OF ANY MARKED OR UNMARKED BURIED
 PIPELINES OR CABLES ON WELL PAD AND OR ACCESS ROAD AT LEAST TWO (2) WORKING DAYS PRIOR TO CONSTRUCTION.**

May 18, 2005

OPERATIONS PLAN

Well Name: Aztec A #100
Location: Unit M (SW/SW) 1005' FSL & 840' FWL, Section 22, T31N, R11W
 San Juan County, New Mexico
 Latitude 36° 52.7976'N; Longitude 107° 59.0417'W
Formation: Basin Fruitland Coal, Fruitland Sands, Pictured Cliffs
Elevation: 5848' GR

Formation:	Top	Bottom	Contents
Surface	San Jose		
Ojo Alamo	785'		
Kirtland	917'	2257'	gas
T/Fruitland	2257'		gas
B/Fruitland	2463'		gas
Pictured Cliffs	2465'		
Total Depth	2665'		

Note: The Total Depth for this well is into the Pictured Cliffs interval, but currently only have plans to complete the Fruitland Coal interval. We could in the near future perforate/stimulate the Pictured Cliffs interval, but only would once Regulatory approval was asked for and received.

Logging Program: None

Mud Program:

Interval	Type	Weight	Vis. Fluid Loss
0- 120'	Spud / air / air-mist	8.4-8.9	40-50 no control
120-2665'	Non-dispersed	8.4-9.5	30-60 no control

Casing Program:

Hole Size	Depth Interval	Csg. Size	Wt.	Grade
8 $\frac{3}{4}$ "	0 - 120'	7"	20.0#	J-55
6 $\frac{1}{4}$ "	0 - 2665'	4 1/2"	10.5#	J/K-55

Tubing Program:

0 - 2665'	2 3/8"	4.7#	J-55
-----------	--------	------	------

Float Equipment: 7" surface casing - guide shoe. Centralizers will be run in accordance with Onshore Order #2.

4 1/2" production casing - float shoe and float collar on bottom. Centralizers run every third joint above shoe to the base of the Ojo Alamo @ 917'. Two turbolizing type centralizers - one below and one into the base of the Ojo Alamo @ 917'. Standard centralizers thereafter every fourth joint up to the base of the surface pipe.

Wellhead Equipment: 7" x 4 1/2" x 2 3/8" x 11" 2000 psi xmas tree assembly.

May 18, 2005

Cementing:

7" surface casing Pre-Set Drilled - Cement with Type I, II cement with 20% flyash mixed at 14.5 ppg, 1.61 cu ft per sack yield. (Bring cement to surface). Wait on cement for 24 hours for pre-set holes before pressure testing or drilling out from under surface.

7" surface casing - Cement with 42 sx Type III cement with 0.25 pps Celloflake, 3% CaCl. (54cu ft of slurry @ 1.28 yield). 200% excess, bring cement to surface. Wait on cement for 8 hrs for conventionally set holes before pressure testing or drilling out from under surface.
WOC until cement establishes 250 psi compressive strength prior to NU of BOPE.

4 1/2" production casing - Cement with 134sx (285cu ft of slurry @ 2.13 yield) Premium Lite with 3% calcium chloride, 5 pps LCM-1, and 1/4#/sack celloflake, 0.4% FL-52, & 0.4% SMS. Tail with 90sx (125cu ft of slurry @ 1.38 yield) Type III cmt with 1% calcium chloride, 1/4#/sack Celloflake and 0.2% FL-52. Total of 410 cf - 50% excess to circulate to surface.

BOP and tests:

Surface to TD - 11" 2000 psi (minimum double gate BOP stack (Reference Figure #1 and #2). Prior to drilling out surface casing, test rams to 600 psi/30 min.

Completion - 6" 2000 psi (minimum) double gate BOP stack (Reference Figure #2). Prior to completion operations, test rams and casing to 1500 psi/30 min.

From surface to TD - choke manifold (Reference Figure #3).

Pipe rams will be actuated at least once each day and blind rams actuated once each trip to test proper functioning. An upper kelly cock valve with handle and drill string safety valves to fit each drill string will be maintained and available on the rig floor.

Additional information:

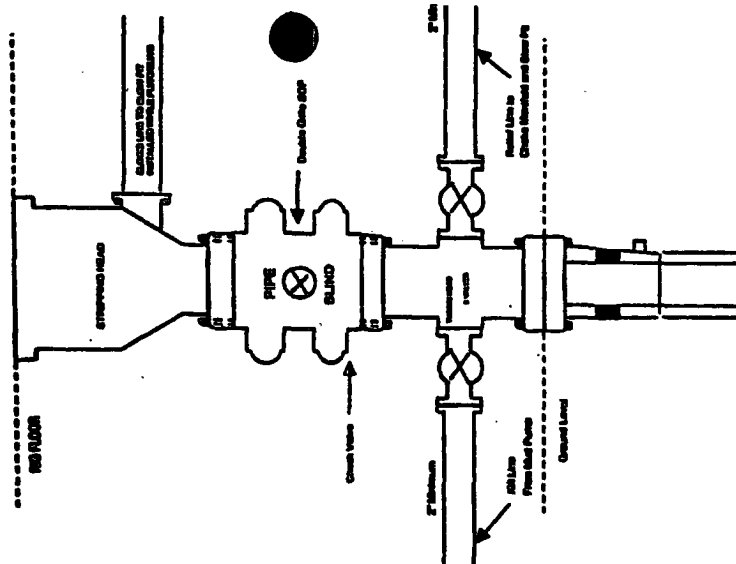
- * The Fruitland Coal formation will be completed.
- * Anticipated pore pressure for the Fruitland is between 600 - 700 psi.
- * This gas is dedicated.
- * The south half of the section is dedicated to Fruitland Coal and S2 is dedicated to Fruitland Coal for this well.
- * New casing will be utilized.
- * Pipe movement (either rotation or reciprocation) will be done if hole conditions permit.

 Monty M Myers
Drilling Engineer

5/23/05
Date

BURLINGTON RESOURCES

Completion/Workover Rig
BOP Configuration
2,000 psi System



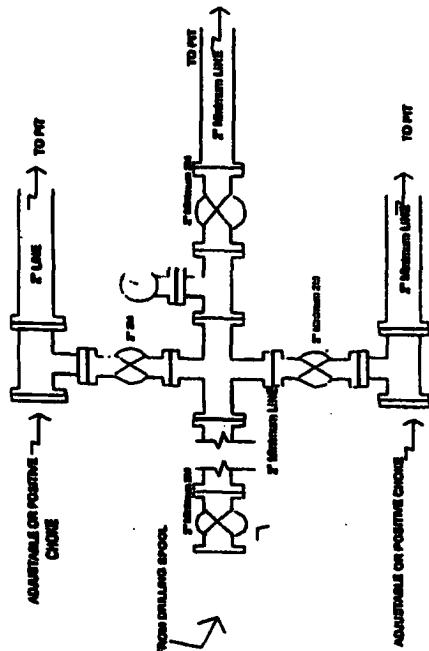
Minimum BOP installation for all Completion/Workover Operations. 7-1/16" bore, 2000 psi minimum working pressure double gate BOP to be equipped with blind and pipe rams. A stripping head to be installed on the top of the BOP. All BOP equipment is 2000 psi working pressure or greater excluding 500 psi stripping head.

Figure #2

4-20-01

BURLINGTON RESOURCES

Drilling Rig
Choke Manifold Configuration
2000 psi System



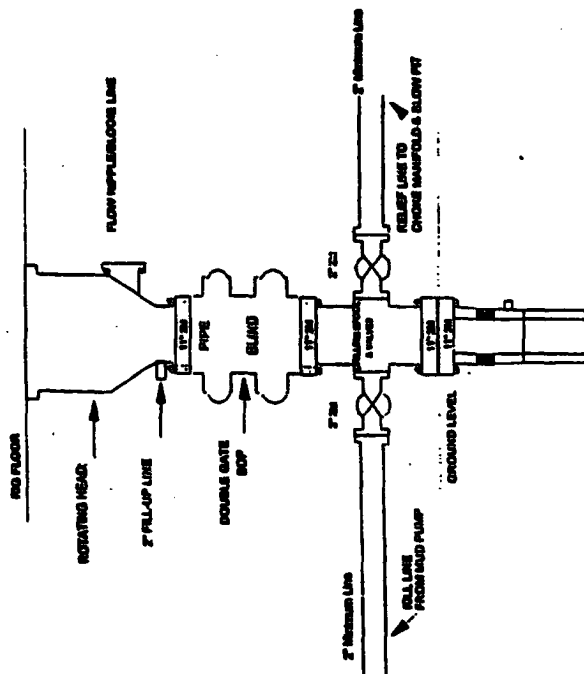
Choke manifold installation from Surface Casing Point to Total Depth. 2,000psi working pressure equipment with two chokes.

Figure #3

4-20-01

Burlington Resources

Drilling Rig
2000 psi System



BOP Installation from Surface Casing Point to Total Depth. 11" Bore 10" Nominal, 2000 psi working pressure double gate BOP to be equipped with blind rams and pipe rams. A 500 psi relieving head on top of ram preventers. All BOP equipment is 2,000 psi working pressure.

Figure #1