

# Chaco 2308-03E #403H

## Basin Mancos (page 1)

Spud: 9/24/14

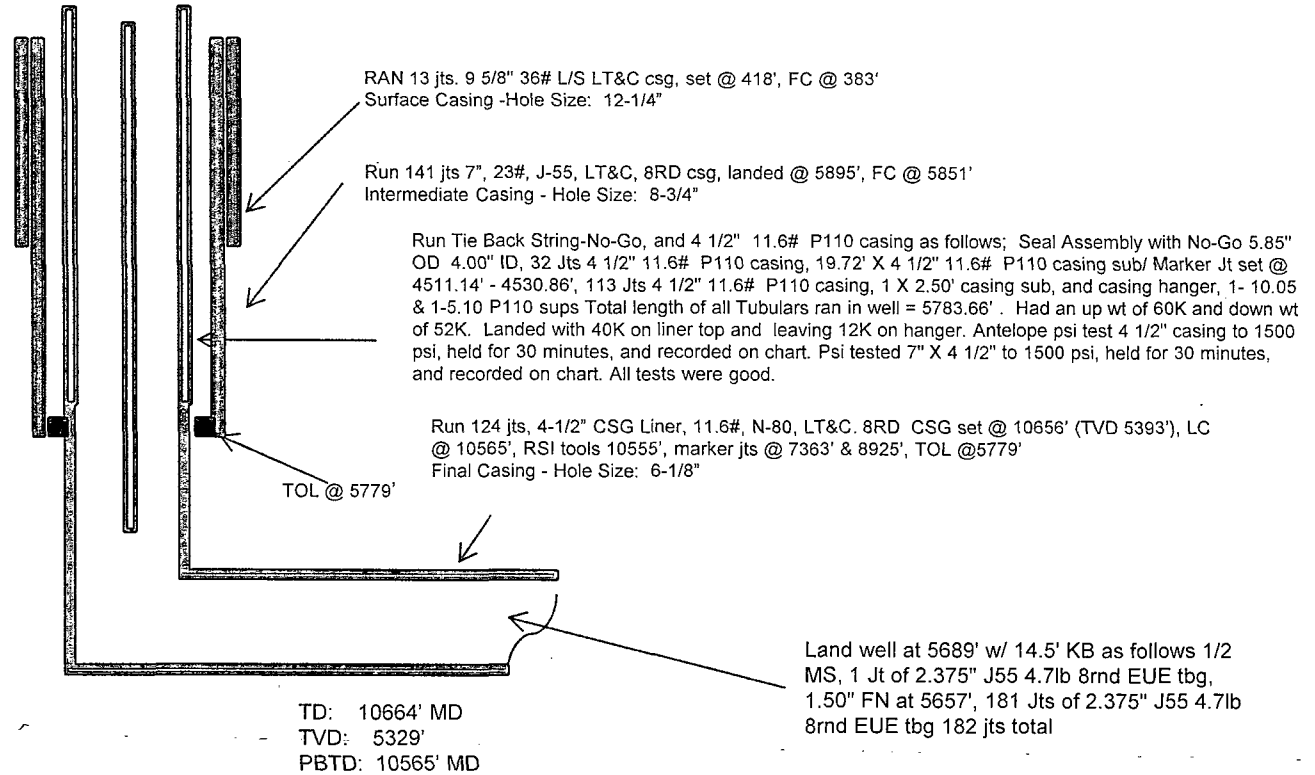
Completed: 11/12/14

SHL: 1906' FNL & 817' FWL  
SW/4 NW/4 Section 3(E), T23N, R8W

BHL: 329' FNL & 231' FWL  
NW/4 NW/4 Section 4 (D), T23N, R 8W

SAN JUAN., NM  
Elevation: 6892'  
API: 30-045-35588

Tops	MD	TVD
Ojo Alamo	1174'	1166
Kirtland	1341'	1326'
Pictured Cliffs	1757'	1728'
Lewis	1831'	1800'
Chacra	2147'	2109'
Cliff House	3250'	3184'
Menefee	3302'	3234'
Point Lookout	4184'	4092'
Mancos	4398'	4303'
Gallup	4758'	4662'



HOLE SIZE	CASING	CEMENT	VOLUME	CMT TOP
12-1/4"	9-5/8"	245 sx	222 cu.ft.	Surface
8-3/4"	7"	872 sx	1293 cu. ft.	Surface
6-1/8"	4-1/2"	390 sx	552 cu. ft.	TOL 5779'

Lg 11/18/14

OIL CONS. DIV DIST. 3  
NOV 21 2014

2

2

# Chaco 2308-03E #403H

## Basin Mancos (page 1)

Gallup 1<sup>st</sup>:  
10325'-10496' +  
RSI TOOL @  
10555' with  
200,065 # 20/40  
PSA Sand

(page 2 – lateral with completion)

Gallup 4<sup>th</sup>:  
9467'-9653'-  
with 24, 0.40"  
holes. Frac  
Gallup 4<sup>th</sup> stage  
with 201,000#,  
20/40 PSA  
Sand

Gallup 8<sup>th</sup>:  
8323'-8509'- with 24,  
0.40" holes. Frac Gallup  
8<sup>th</sup> stage with 207,720#,  
20/40 PSA Sand

Gallup 12<sup>th</sup>:  
7179'-7358'- with  
24, 0.40" holes.  
Frac Gallup 12<sup>th</sup>  
stage with 180,759#  
20/40 PSA Sand

Gallup 15<sup>th</sup>:  
6321'-6507'- with  
24, 0.40" holes.  
Frac Gallup 15<sup>th</sup>  
stage with  
235,200#, 20/40  
PSA Sand

Gallup 11<sup>th</sup>:  
7465'-7651'- with 24,  
0.40" holes. Frac  
Gallup 11<sup>th</sup> stage with  
200,500#, 20/40 PSA  
Sand

Gallup 6<sup>th</sup>:  
8896'-9081'-  
with 24, 0.40"  
holes. Frac  
Gallup 6<sup>th</sup> stage  
with 199,300# ,  
20/40 PSA  
Sand

Gallup 3<sup>rd</sup>:  
9750'-9933'- with  
24, 0.40" holes.  
Frac Gallup 3<sup>rd</sup>  
stage with  
202,500#, 20/40  
PSA Sand

Gallup 9<sup>th</sup>:  
8037'-8223'- with  
24, 0.40" holes.  
Frac Gallup 9<sup>th</sup>  
stage with  
199,800#, 20/40  
PSA Sand

Gallup 7<sup>th</sup>:  
8609'-8794'-  
with 24, 0.40"  
holes. Frac  
Gallup 7<sup>th</sup>  
stage with  
203,200# ,  
20/40 PSA  
Sand

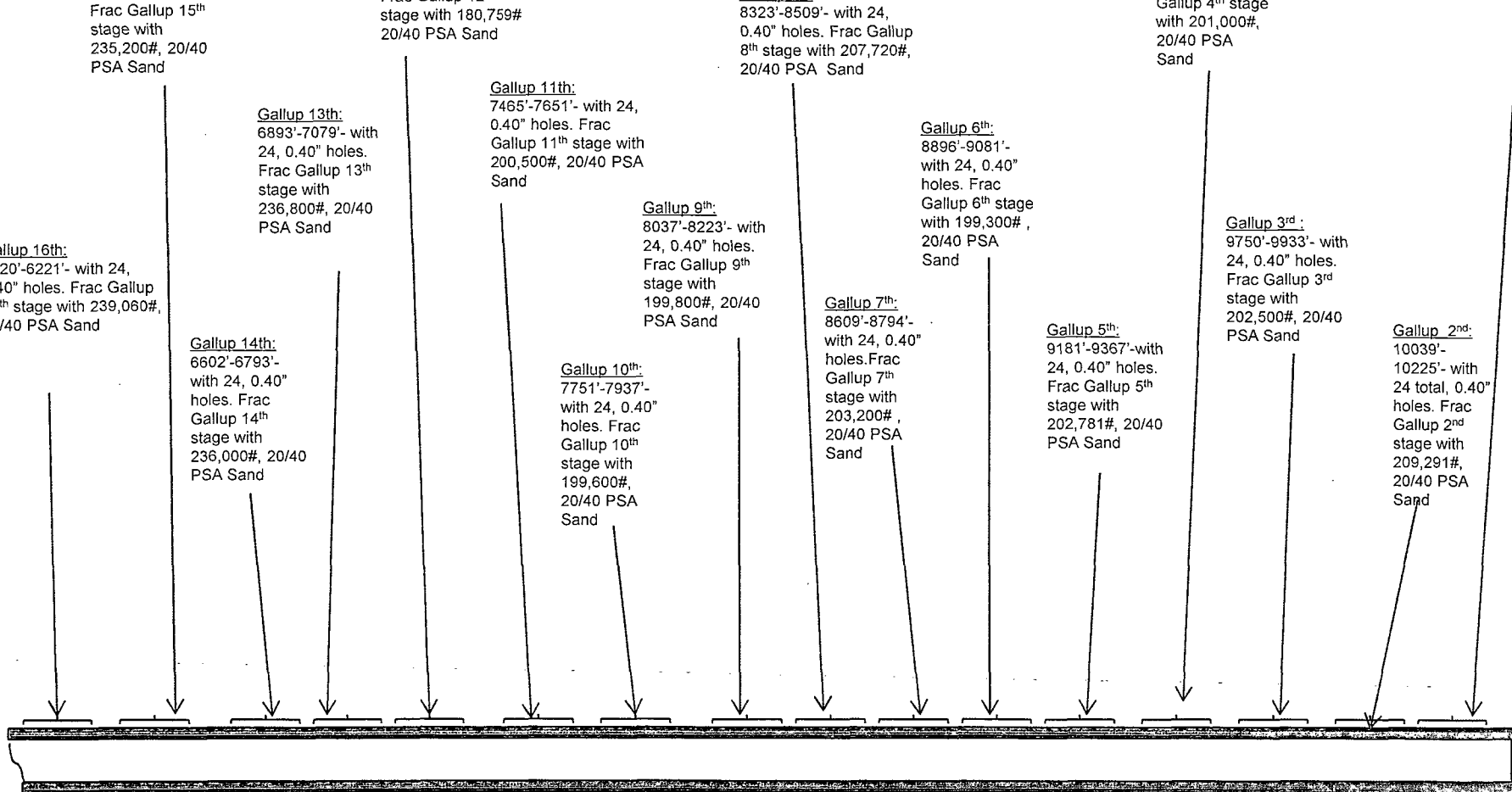
Gallup 5<sup>th</sup>:  
9181'-9367'-with  
24, 0.40" holes.  
Frac Gallup 5<sup>th</sup>  
stage with  
202,781#, 20/40  
PSA Sand

Gallup 2<sup>nd</sup>:  
10039'-  
10225'- with  
24 total, 0.40"  
holes. Frac  
Gallup 2<sup>nd</sup>  
stage with  
209,291#,  
20/40 PSA  
Sand

Gallup 10<sup>th</sup>:  
7751'-7937'-  
with 24, 0.40"  
holes. Frac  
Gallup 10<sup>th</sup>  
stage with  
199,600#,  
20/40 PSA  
Sand

Gallup 14<sup>th</sup>:  
6602'-6793'-  
with 24, 0.40"  
holes. Frac  
Gallup 14<sup>th</sup>  
stage with  
236,000#, 20/40  
PSA Sand

Gallup 16<sup>th</sup>:  
5920'-6221'- with 24,  
0.40" holes. Frac Gallup  
16<sup>th</sup> stage with 239,060#,  
20/40 PSA Sand



See page 1 for upper portion of hole

OIL CONS. DIV DIST.  
NOV 21 2014