

NE CHACO COM #202H CHACO UNIT NE HZ (OIL)_(page 1)

Spud: 10/4/14

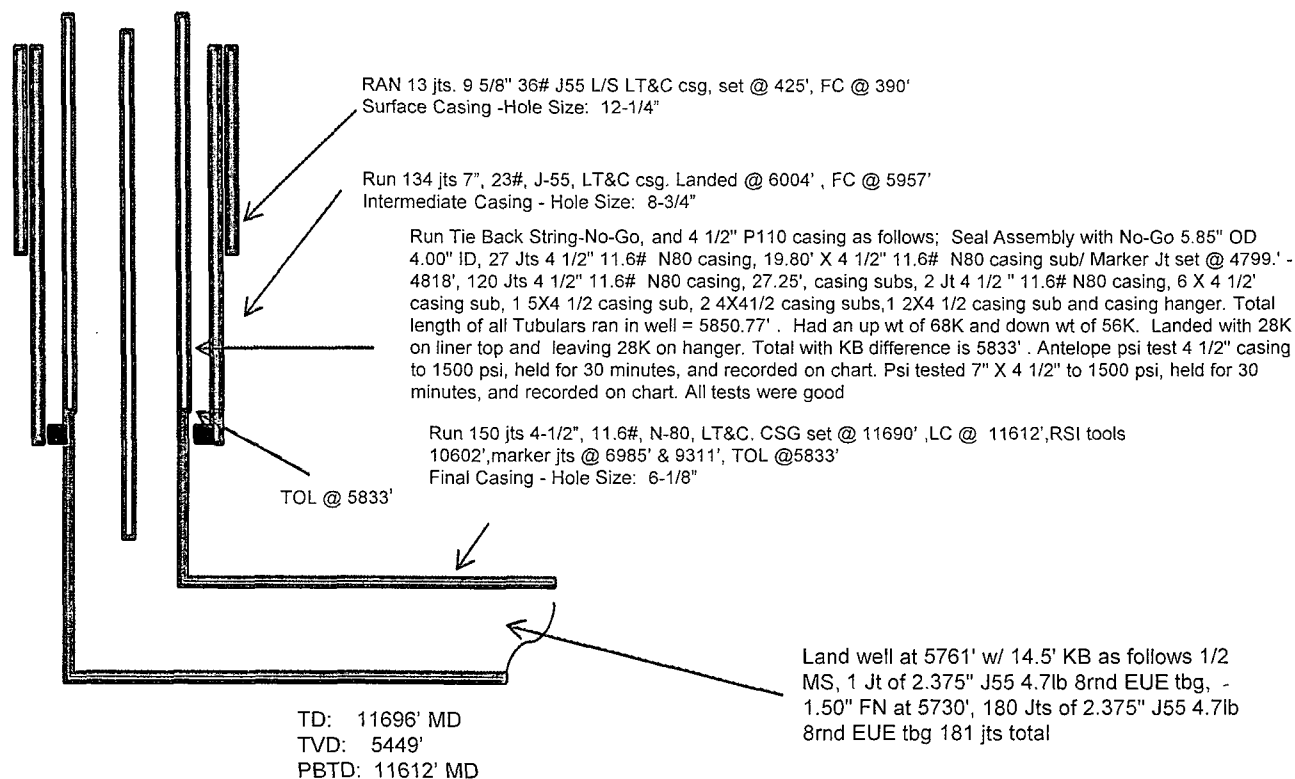
Completed: 12/25/14

SHL: 1329' FNL & 315' FWL
SW/4 NW/4 Section 17(E), T23N, R6W

BHL: 1099' FNL & 798' FEL
NE/4 NE/4 Section 13 (A), T23N, R 7W

RIO ARRIBA NM
Elevation: 6910
API: 30-039-31254

Tops	MD	TVD
Ojo Alamo:	1351' MD,	1348' TVD
Kirtland:	1655' MD,	1650' TVD,
Picture Cliffs:	1968' MD,	1960' TVD,
Lewis:	2070' MD,	2061' TVD,
Chacra:	2385' MD,	2374' TVD,
Cliff House:	3477' MD,	3458' TVD,
Menefee:	3519' MD,	3500' TVD,
Point Lookout:	4247' MD,	4223' TVD,
Mancos:	4457' MD,	4431' TVD,
Gallup:	4858' MD,	4832' TVD,
Top Target:	5643' MD,	5480' TVD,



HOLE SIZE	CASING	CEMENT	VOLUME	CMT TOP
12-1/4"	9-5/8"	245 sx	222 cu.ft.	Surface
8-3/4"	7"	930 sx	1461 cu. ft.	Surface
6-1/8"	4-1/2"	555 sx	400 cu. ft.	TOL 5833'

Lg 12/30/14

CONFIDENTIAL

OIL CONS. DIV DIST. 3

JAN 09 2015

NE CHACO COM #201H CHACO UNIT NE HZ (OIL)

(page 2 – lateral with completion)

Gallup 20th:
6035'-6146'- with 24,
0.40" holes. Frac Gallup
20th stage with
262,000#, 20/40 PSA
Sand

Gallup 16th:
7105'-7293'- with
24, 0.40" holes.
Frac Gallup 16th
stage with
264,853#, 20/40
PSA Sand

Gallup 18th:
6533'-6719'- with
24, 0.40" holes.
Frac Gallup 18th
stage with
266,168#, 20/40
PSA Sand.

Gallup 15th:
7391'-7577'- with
24, 0.40" holes.
Frac Gallup 15th
stage with
211,261#, 20/40
PSA Sand

Gallup 12th:
8245'-8435'- with
24, 0.40" holes.
Frac Gallup 12th
stage with 212,797#
20/40 PSA Sand

Gallup 14th:
7677'-7863'-
with 24, 0.40"
holes. Frac
Gallup 14th
stage with
242,257#, 20/40
PSA Sand

Gallup 11th:
8530'-8721'- with 24,
0.40" holes. Frac
Gallup 11th stage with
214,125#, 20/40 PSA
Sand

Gallup 8th:
9393'-9579'- with 24,
0.40" holes. Frac Gallup
8th stage with 212,980#,
20/40 PSA Sand

Gallup 9th:
9107'-9293'- with
24, 0.40" holes.
Frac Gallup 9th
stage with
216,080#, 20/40
PSA Sand

Gallup 10th:
8821'-9007'-
with 24, 0.40"
holes. Frac
Gallup 10th
stage with
213,068#,
20/40 PSA
Sand

Gallup 6th:
10170'-9987'-
with 24, 0.40"
holes. Frac
Gallup 6th stage
with 215,000# ,
20/40 PSA
Sand

Gallup 7th:
9884'-9701'-
with 24, 0.40"
holes. Frac
Gallup 7th
stage with
213,347# ,
20/40 PSA
Sand

Gallup 5th:
10271'-10457'-
with 24, 0.40"
holes. Frac
Gallup 5th stage
with 215,700#,
20/40 PSA
Sand

Gallup 4th:
10557'-10739'-
with 24, 0.40"
holes. Frac
Gallup 4th stage
with 213,000#,
20/40 PSA
Sand

Gallup 3rd :
11028'-10845'-
with 24, 0.40"
holes. Frac Gallup
3rd stage with
212,120#, 20/40
PSA Sand

Gallup 2nd:
11129'-
11315'- with
24 total, 0.40"
holes. Frac
Gallup 2nd
stage with
215,080#,
20/40 PSA
Sand

Gallup 1st:
11415'-11540' +
RSI TOOL @
11602'
214,600# 20/40
PSA Sand

See page 1 for upper portion of hole

OIL CONS. DIV DIST. 3

JAN 09 2015