

NE CHACO COM #270H CHACO UNIT NE HZ (OIL)

(page 1)

Spud: 10/2/14

Completed: 12/26/14

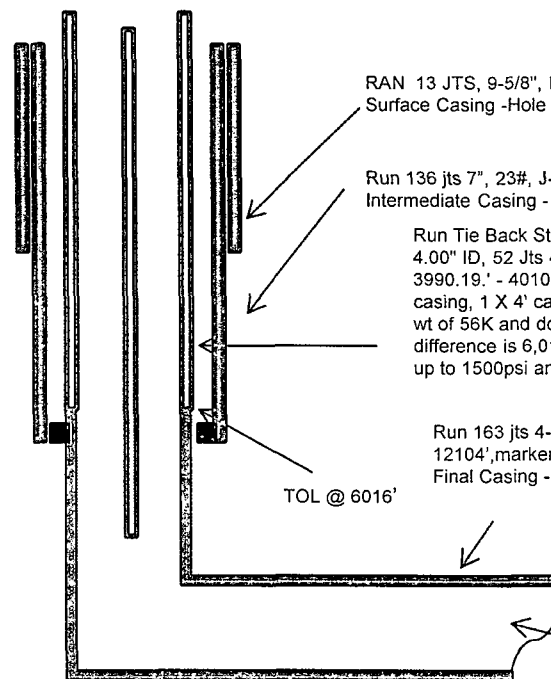
OIL CONS. DIV DIST. 3
JAN 09 2015

SHL 1285' FNL & 327' FWL
NW/4 NW/4 Section 17(D), T23N, R6W

BHL 1543' FNL & 1681' FWL
SE/4 NW/4 Section 16 (F), T23N, R 6W

RIO ARRIBA NM
Elevation: 6910
API: 30-039-31255

Tops	MD	TVD
Ojo Alamo:	1421' MD, 1405' TVD,	
Kirtland:	1729' MD, 1699' TVD,	
Picture Cliffs:	2015' MD, 1970' TVD,	
Lewis:	2121' MD, 2070' TVD,	
Chacra:	2466' MD, 2399' TVD,	
Cliff House:	3623' MD, 3494' TVD,	
Menefee:	3652' MD, 3521' TVD,	
Point Lookout:	4408' MD, 4245' TVD,	
Mancos:	4622' MD, 4456' TVD,	
Gallup:	5023' MD, 4856' TVD	



RAN 13 JTS, 9-5/8", LT&C, 36#, J-55, CSG SET @ 422', FC @ 387'
Surface Casing - Hole Size: 12-1/4"

Run 136 jts 7", 23#, J-55, LT&C, 8RD csg, landed @ 6157', FC @ 6110'
Intermediate Casing - Hole Size: 8-3/4"

Run Tie Back String-No-Go, and 4 1/2" P110 casing as follows; Seal Assembly with No-Go 5.85" OD 4.00" ID, 52 Jts 4 1/2" 11.6# N80 casing, 20.19' X 4 1/2" 11.6# N80 casing sub/ Marker Jt set @ 3990.19' - 4010.19', 104 Jts 4 1/2" 11.6# N80 casing, 12.12", 1.88' casing subs, 1 Jt 4 1/2" 11.6# N80 casing, 1 X 4' casing sub, and casing hanger. Total length of all Tubulars ran in well = 6015'. Had an up wt of 56K and down wt of 42K. Landed with 38K on liner top and leaving 18K on hanger. Total with KB difference is 6,014'. pressure up 4 1/2 P110 tie back string to 250psi for 15minutes good test, pressure up to 1500psi and test for 30minutes good test

Run 163 jts 4-1/2", 11.6#, N-80, LT&C. CSG set @ 12190', LC @ 12113', RSI tool 12104', marker jts @ 8224', 10123' TOL @ 6016'
Final Casing - Hole Size: 6-1/8"

TOL @ 6016'

Land well at 5728' w/ 14.5' KB as follows 1/2 MS, 1 Jt of 2.375" J55 4.7lb 8rd EUE tbg, 1.50" FN at 5697', 182 Jts of 2.375" J55 4.7lb 8rd EUE tbg 183 jts total

TD: 12195' MD
TVD: 5551'
PBDT: 12113' MD

HOLE SIZE	CASING	CEMENT	VOLUME	CMT TOP
12-1/4"	9-5/8"	245 sx	222 cu.ft.	Surface
8-3/4"	7"	912 sx	1461 cu. ft.	Surface
6-1/8"	4-1/2"	460 sx	536 cu. ft.	TOL 6016'

CONFIDENTIAL

Lg 12/29/14

PV

JAN 09 2015

NE CHACO COM #270H CHACO UNIT NE HZ (OIL)

(page 2 – lateral with completion)

Gallup 21st:
6196'-6382'-
with 24, 0.40"
holes. Frac
Gallup 21th
stage with
253,450#,
20/40 PSA
Sand

Gallup 20th:
6486'-6665'- with
24, 0.40" holes.
Frac Gallup 20th
stage with
267,000#, 20/40
PSA Sand

Gallup 19th:
6768'-6954'- with 24,
0.40" holes. Frac
Gallup 19th stage with
268,825#, 20/40 PSA
Sand

Gallup 18th:
7052'-7241'- with
24, 0.40" holes.
Frac Gallup 18th
stage with
263,200#, 20/40
PSA Sand

Gallup 17th:
7340'-7526'-
with 24,
0.40" holes.
Frac Gallup
17th stage
with
262,000#,
20/40 PSA
Sand

Gallup 16th:
7626'-7812'- with
24, 0.40" holes.
Frac Gallup 16th
stage with
216,264#, 20/40
PSA Sand

Gallup 15th:
7914'-8093'- with
24, 0.40" holes.
Frac Gallup 15th
stage with
218,279#, 20/40
PSA Sand

Gallup 14th:
8198'-8384'-
with 24, 0.40"
holes. Frac
Gallup 14th
stage with
216,786#, 20/40
PSA Sand

Gallup 13th:
8484'-8670'- with
24, 0.40" holes.
Frac Gallup 13th
stage with
216,761#, 20/40
PSA Sand

Gallup 12th:
8768'-8956'- with
24, 0.40" holes.
Frac Gallup 12th
stage with 219,669#
20/40 PSA Sand

Gallup 11th:
9056'-9242'- with 24,
0.40" holes. Frac
Gallup 11th stage with
214,821#, 20/40 PSA
Sand

Gallup 10th:
9342'-9528'-
with 24, 0.40"
holes. Frac
Gallup 10th
stage with
210,300#,
20/40 PSA
Sand

Gallup 9th:
9626'-9817'- with
24, 0.40" holes.
Frac Gallup 9th
stage with
211,260#, 20/40
PSA Sand

Gallup 8th:
9914'-10100'-
with 24, 0.40" holes. Frac
Gallup 8th stage with
203,652#, 20/40 PSA
Sand

Gallup 7th:
10385'-
10202'- with
24, 0.40"
holes. Frac
Gallup 7th
stage with
214,540#,
20/40 PSA
Sand

Gallup 6th:
10482'-10672'-
with 24, 0.40"
holes. Frac
Gallup 6th stage
with 215,280#,
20/40 PSA
Sand

Gallup 5th:
10772'-10958'-
with 24, 0.40"
holes. Frac
Gallup 5th stage
with 210,800#,
20/40 PSA
Sand

Gallup 3rd:
11525'-11341'-
with 24, 0.40"
holes. Frac Gallup
3rd stage with
216,640#, 20/40
PSA Sand

Gallup 2nd:
11630'-
11816'- with
24 total, 0.40"
holes. Frac
Gallup 2nd
stage with
220,944#,
20/40 PSA
Sand

Gallup 1st:
11916'-12041' +
RSI TOOL @
12104',
214,300# 20/40
PSA Sand

Gallup 4th:
11243'-11060'-
with 24, 0.40"
holes. Frac
Gallup 4th stage
with 214,728#,
20/40 PSA
Sand

See page 1 for upper portion of hole