

State of New Mexico  
Energy, Minerals and Natural Resources Department

**Susana Martinez**  
Governor

**David Martin**  
Cabinet Secretary

**Brett F. Woods, Ph.D.**  
Deputy Cabinet Secretary

**David R. Catanach, Division Director**  
Oil Conservation Division



New Mexico Oil Conservation Division approval and conditions  
listed below are made in accordance with OCD Rule 19.15.7.11  
and are in addition to the actions approved by BLM on the  
following 3160-4 or 3160-5 form.

Operator Signature Date: 3/24/2015

Well information:

API WELL #	Well Name	Well #	Operator Name	Type	Stat	County	Surf_Owner	UL	Sec	Twp	N/S	Rng	W/E
30-039-29433-00-00	SAN JUAN 28 4 UNIT	030E	BURLINGTON RESOURCES OIL & GAS COMPANY LP	G	A	Rio Arriba	F	I	31	28	N	4	W

Application Type:

☐ P&A    ☐ Drilling/Casing Change    ☐ Location Change

☒ **Recomplete/DHC** (For hydraulic fracturing operations review EPA Underground injection control Guidance #84)

☐ **Other:**

Conditions of Approval:

1. Notify OCD if holes in casing prior to repair.
2. Submit post-repair CBL and proposed perforation depths prior to completion.

\_\_\_\_\_  
NMOCD Approved by Signature

4/7/15  
Date

UNITED STATES  
DEPARTMENT OF THE INTERIOR  
BUREAU OF LAND MANAGEMENT

OIL CONS. DIV DIST. 3

MAR 30 2015

FORM APPROVED  
OMB No. 1004-0137  
Expires: July 31, 2010**SUNDRY NOTICES AND REPORTS ON WELLS**  
*Do not use this form for proposals to drill or to re-enter an abandoned well. Use Form 3160-3 (APD) for such proposals.*

SUBMIT IN TRIPLICATE - Other instructions on page 2.

1. Type of Well

☐ Oil Well☒ Gas Well☐ Other

2. Name of Operator

Burlington Resources Oil &amp; Gas Company LP

3a. Address

PO Box 4289, Farmington, NM 87499

3b. Phone No. (include area code)

(505) 326-9700

4. Location of Well (Footage, Sec., T., R., M., or Survey Description)

Surface

UL I (NESE), 2480' FSL &amp; 1060' FEL, Sec. 31, T28N, R4W

7. If Unit of CA/Agreement, Name and/or No.

San Juan 28-4 Unit

8. Well Name and No.

San Juan 28-4 Unit 30E

9. API Well No.

30-039-29433

10. Field and Pool or Exploratory Area

Basin DK / Blanco MV

11. Country or Parish, State

Rio Arriba

New Mexico

## 12. CHECK THE APPROPRIATE BOX(ES) TO INDICATE NATURE OF NOTICE, REPORT OR OTHER DATA

## TYPE OF SUBMISSION

☒ Notice of Intent☐ Subsequent Report☐ Final Abandonment Notice

## TYPE OF ACTION

☐ Acidize☐ Alter Casing☐ Casing Repair☐ Change Plans☐ Convert to Injection☐ Deepen☐ Fracture Treat☐ New Construction☐ Plug and Abandon☐ Plug Back☐ Production (Start/Resume)☐ Reclamation☒ Recomplete☐ Temporarily Abandon☐ Water Disposal☐ Water Shut-Off☐ Well Integrity☐ Other

13. Describe Proposed or Completed Operation: Clearly state all pertinent details, including estimated starting date of any proposed work and approximate duration thereof. If the proposal is to deepen directionally or recompleate horizontally, give subsurface locations and measured and true vertical depths of all pertinent markers and zones. Attach the bond under which the work will be performed or provide the Bond No. on file with BLM/BIA. Required subsequent reports must be filed within 30 days following completion of the involved operations. If the operation results in a multiple completion or recompleation in a new interval, a Form 3160-4 must be filed once Testing has been completed. Final Abandonment Notices must be filed only after all requirements, including reclamation, have been completed and the operator has determined that the site is ready for final inspection.)

Burlington Resources requests permission to recompleate the subject well in the Mesaverde and down hole commingle with the existing Basin Dakota zone. Please see attached procedure, wellbore diagram and MV/DK Plat. The DHC application will be submitted and approved before the work proceeds. Burlington Resources does not anticipate this activity to generate more than 0.99 acres of bare soil disturbance outside the normal tear drop per the BLM FFO Bare Soil Reclamation procedures, Part A.3 - Location of existing and/or proposed production facilities, page 16. Burlington Resources realizes that bare soil disturbance greater than 0.10 acre outside the working area will have to be re-vegetated as dictated by Vegetation Reclamation Procedure C, Page 12, within 180 days to accommodate optimal reseeding time. A closed loop system will be utilized for this recompleate procedure.

**SEE ATTACHED FOR  
CONDITIONS OF APPROVAL****CONDITIONS OF APPROVAL**  
Adhere to previously issued stipulations.

14. I hereby certify that the foregoing is true and correct. Name (Printed/Typed)

Kenny Davis

Title Staff Regulatory Technician

Signature

Date

3/9/2015

## THIS SPACE FOR FEDERAL OR STATE OFFICE USE

Approved by

Troy Sellers

Title PE

Date

3/24/2015

Conditions of approval, if any, are attached. Approval of this notice does not warrant or certify that the applicant holds legal or equitable title to those rights in the subject lease which would entitle the applicant to conduct operations thereon.

Office

FFO

Title 18 U.S.C. Section 1001 and Title 43 U.S.C. Section 1212, make it a crime for any person knowingly and willfully to make to any department or agency of the United States any false, fictitious or fraudulent statements or representations as to any matter within its jurisdiction.

(Instruction on page 2)

MMOCDV

District I  
PO Box 1980, Hobbs, NM 88241-1980

District II  
PO Drawer DD, Artesia, NM 88211-0719

District III  
1000 Rio Brazos Rd., Aztec, NM 87410

District IV  
PO Box 2088, Santa Fe, NM 87504-2088

State of New Mexico  
Energy, Minerals & Natural Resources Department

OIL CONSERVATION DIVISION  
PO Box 2088  
Santa Fe, NM 87504-2088

Form C-102  
Revised February 21, 1994  
Instructions on back  
Submit to Appropriate District Office  
State Lease - 4 Copies  
Fee Lease - 3 Copies

☐ AMENDED REPORT

2005 FEB 1 AM 11 58

WELL LOCATION AND ACRES DEDICATION PLAT

*API Number <b>30-039-29433</b>		*Pool Code <b>71599 / 72319</b>	*Pool Name <b>070 FARMINGTON NM Basin Dakota and Blanco Mesaverde</b>
*Property Code <b>7459</b>	*Property Name <b>SAN JUAN 28-4 UNIT</b>		*Well Number <b>30 E</b>
*OGAID No. <b>14538</b>	*Operator Name <b>BURLINGTON RESOURCES OIL &amp; GAS COMPANY, LP</b>		*Elevation <b>7196'</b>

<sup>10</sup> Surface Location


UL or lot no.	Section	Township	Range	Lot Idn	Feet from the	North/South line	Feet from the	East/West line	County
I	31	28N	4W		2480	SOUTH	1060	EAST	RIO ARriba

<sup>11</sup> Bottom Hole Location If Different From Surface

UL or lot no.	Section	Township	Range	Lot Idn	Feet from the	North/South line	Feet from the	East/West line	County
I									

<sup>12</sup> Dedicated Acres DK - <b>320 S/2</b> MV - <b>320 E/2</b>	<b>31962.512</b>	<sup>13</sup> Joint or Infill	<sup>14</sup> Consolidation Code	<sup>15</sup> Order No.
---	------------------	-------------------------------	----------------------------------	-------------------------

NO ALLOWABLE WILL BE ASSIGNED TO THIS COMPLETION UNTIL ALL INTERESTS HAVE BEEN CONSOLIDATED OR A NON-STANDARD UNIT HAS BEEN APPROVED BY THE DIVISION

<sup>16</sup> 1315.38' 1320.00' 2640.00'	<sup>17</sup> OPERATOR CERTIFICATION I hereby certify that the information contained herein is true and complete to the best of my knowledge and belief. <i>Patsy Clugston</i> Signature <b>Patsy Clugston</b> Printed Name <b>Sr. Regulatory Specialist</b> Title <b>8-20-04</b> Date
LOT 1 OIL CONS. DIV DIST. 3 MAR 30 2013	
LOT 2	
LOT 3	
LOT 4 1317.36' 1320.00' 2640.00'	<sup>18</sup> SURVEYOR CERTIFICATION I hereby certify that the well location shown on this plat was plotted from field notes of actual surveys made by me or under my supervision, and that the same is true and correct to the best of my belief. Date of Survey: <b>JULY 26, 2004</b> Signature and Seal of Professional Surveyor  <b>JASON C. EDWARDS</b> Certificate Number 15269

## **SJU 28-4 #30E**

Sec 31-T28N-R04W, Unit I

API# 3003929433

**Mesaverde Recompletion Sundry**

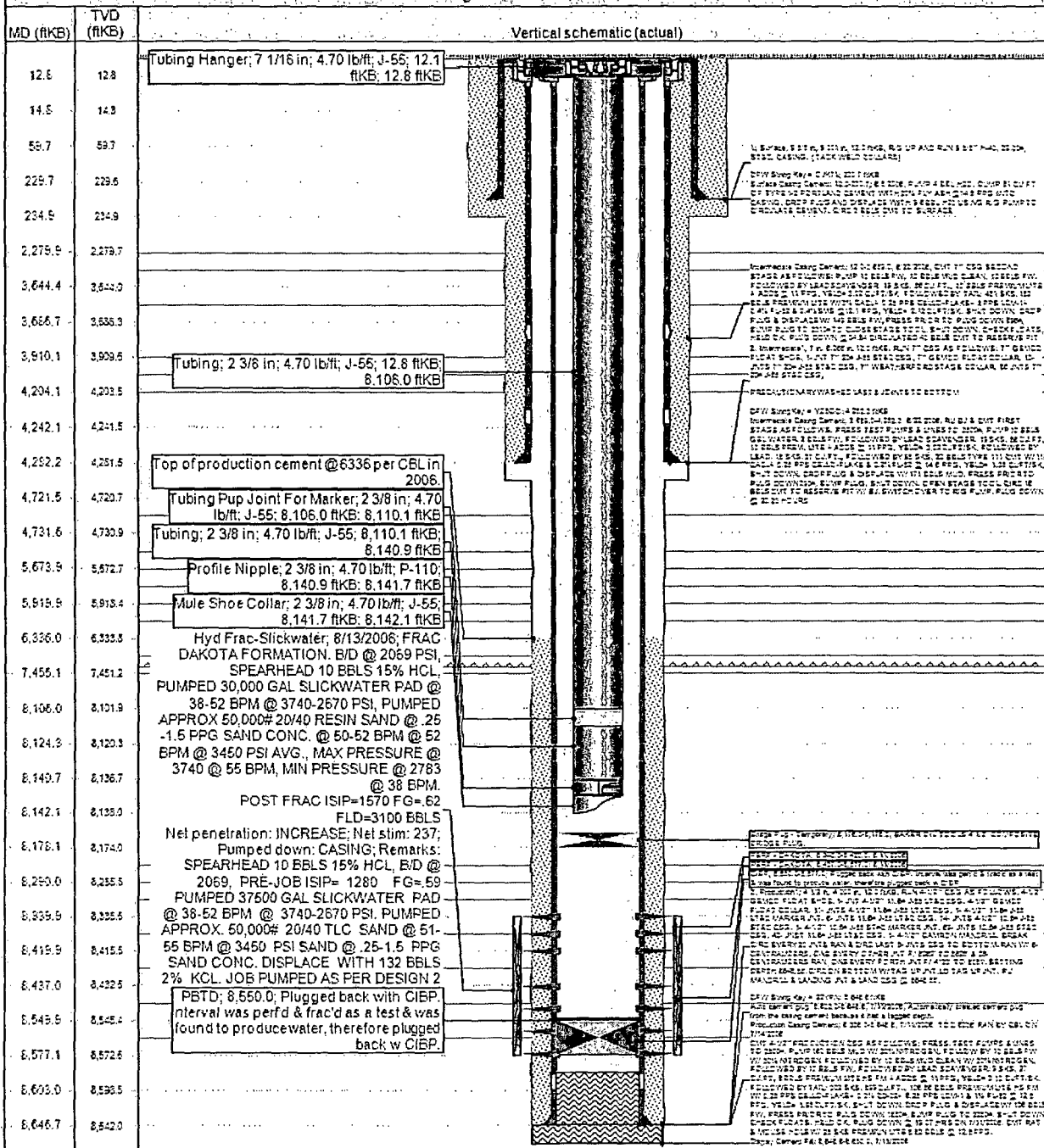
**2/26/2015**

### **Procedure:**

1. MIRU service rig and associated equipment; test BOP.
2. TOOH with 2 3/8" tubing set at 8,106'.
3. Composite bridge plug is already set at 8,176' to isolate the Dakota.
4. Pick up packer and 2 3/8" tubing, TIH and determine the location of known casing leak.
5. Set packer just above casing leak and pressure test the remaining casing to frac pressure (4,165 psi). TOOH.
6. TOC is currently at 6,336'. Squeeze cement via a retainer and 2 3/8" work string to achieve new TOC of 4,180'. Sting out of retainer, reverse circulate, TOOH.
7. Pick up mill and clean out to +/- 6,900'. TOOH.
8. N/D BOP, N/U frac stack and test to frac pressure.
9. Perforate and frac the Mesaverde in two stages (Point Lookout / Menefee and Menefee / Cliffhouse).
10. Isolate frac stages with a composite bridge plug.
11. Nipple down frac stack, nipple up BOP and test.
12. TIH with a mill and drill out top isolation plug and Mesaverde frac plug.
13. Clean out to isolation plug at +/- 8,176' and, when water and sand rates are acceptable, flow test the Mesaverde.
14. Drill out the isolation plug and cleanout to PBTD of 8,550'. TOOH.
15. TIH and land production tubing. Get a commingled Dakota / Mesaverde flow rate.
16. Release service rig and turn well over to production.

District	Field Name	API / UWI	County	State/Province
CENTRAL	BASIN DAKOTA	3003929433	RIO ARRIBA	NEW MEXICO
Original Spud Date	Surface Legal Location	East/West Distance (ft)	East/West Reference	North/South Distance (ft)
6/7/2006	031-028N-004W-1	1,060.00	FEL	2,460.00
			North/South Reference	
			FSL	

### VERTICAL - Original Hole, 2/26/2015 4:25:14 PM



## **BLM CONDITIONS OF APPROVAL**

### ***CASING REPAIR, WORKOVER AND RECOMPLETION OPERATIONS:***

1. If casing repair operations are needed, obtain prior approval from this office before commencing repairs. If a CBL or other logs are run, provide this office with a copy.
2. After any casing repair operations, test cement squeeze to a minimum of 500# for 30 minutes with no more than 10 % pressure fall off in the 30 minute test period. Provide test chart with your subsequent report of operations
3. A properly functioning BOP and related equipment must be installed prior to commencing workover, casing repair, and/or recompletion operations.
4. Contact this office at (505) 564-7750 prior to conducting any cementing operations:

### ***SPECIAL STIPULATIONS:***

1. **Pits will be fenced during work-over operation.**
2. **All disturbance will be kept on existing pad.**
3. **All pits will be pulled and closed immediately upon completion of the recompletion and work-over activities.**
4. **Pits will be lined with an impervious material at least 12 mils thick.**