

DISTRICT I  
1625 N. French Dr., Hobbs, N.M. 88240  
Phone: (575) 393-6161 Fax: (575) 393-0720

DISTRICT II  
811 S. First St., Artesia, N.M. 88210  
Phone: (575) 748-1883 Fax: (575) 748-8720

DISTRICT III  
1000 Rio Grande Rd., Aztec, N.M. 87410  
Phone: (505) 334-6176 Fax: (505) 334-6170

DISTRICT IV  
1220 S. St. Francis Dr., Santa Fe, NM 87505  
Phone: (505) 476-3460 Fax: (505) 476-3462

State of New Mexico  
Energy, Minerals & Natural Resources Department

OIL CONSERVATION DIVISION  
1220 South St. Francis Dr.  
Santa Fe, NM 87505

Form C-102  
Revised August 1, 2011  
Submit one copy to appropriate  
District Office

☐ AMENDED REPORT

WELL LOCATION AND ACREAGE DEDICATION PLAT

<sup>1</sup> API Number 30-045-35645	<sup>2</sup> Pool Code 64290 / 97232	<sup>3</sup> Pool Name WHITE WASH MANCOS DAKOTA / BASIN MANCOS
<sup>4</sup> Property Code 314773	<sup>5</sup> Property Name BRANNON FEDERAL	<sup>6</sup> Well Number 292H
<sup>7</sup> GRID No. 289408	<sup>8</sup> Operator Name LOGOS OPERATING, LLC	<sup>9</sup> Elevation 6680'

<sup>10</sup> Surface Location

UL or lot no.	Section	Township	Range	Lot Idn	Feet from the	North/South line	Feet from the	East/West line	County
E	28	25-N	9-W		1824	NORTH	300	WEST	SAN JUAN

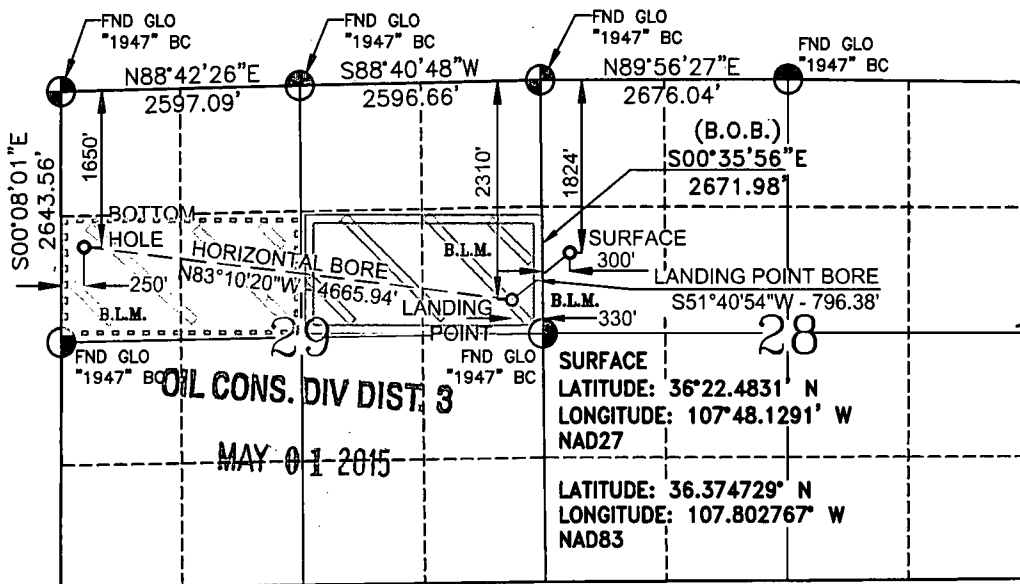
<sup>11</sup> Bottom Hole Location If Different From Surface

UL or lot no.	Section	Township	Range	Lot Idn	Feet from the	North/South line	Feet from the	East/West line	County
E	29	25-N	9-W		1650	NORTH	250	WEST	SAN JUAN

<sup>12</sup> Dedicated Acres WW MN S/2NE/4 80 acres Basin MN S/2NW/4 80 acres	<sup>13</sup> Joint or Infill	<sup>14</sup> Consolidation Code	<sup>15</sup> Order No.
--	-------------------------------	----------------------------------	-------------------------

NO ALLOWABLE WILL BE ASSIGNED TO THIS COMPLETION UNTIL ALL INTERESTS HAVE BEEN CONSOLIDATED  
OR A NON-STANDARD UNIT HAS BEEN APPROVED BY THE DIVISION

16



☐ Basin Mancos ☐ White Wash Mancos Dakota

BOTTOM HOLE  
LATITUDE: 36°22.4932' N  
LONGITUDE: 107°49.2002' W  
NAD27

LATITUDE: 36.374897° N  
LONGITUDE: 107.820620° W  
NAD83

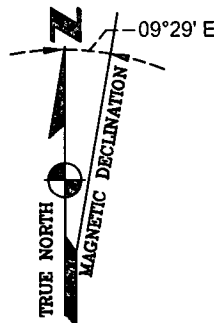
LANDING POINT  
LATITUDE: 36°22.4018' N  
LONGITUDE: 107°48.2564' W  
NAD27

LATITUDE: 36.373374° N  
LONGITUDE: 107.804889° W  
NAD83

BASIS OF BEARING:

BETWEEN FOUND MONUMENTS AT THE NORTHEAST CORNER AND THE EAST  
QUARTER CORNER OF SECTION 29, TOWNSHIP 25 NORTH, RANGE 9 WEST,  
N.M.P.M. SAN JUAN COUNTY, NEW MEXICO.

LINE BEARS: S 00°35'56" E A DISTANCE OF 2671.98 FEET AS MEASURED BY  
G.P.S. LOCAL GRID NAD83.



<sup>17</sup> OPERATOR CERTIFICATION

I hereby certify that the information contained herein  
is true and complete to the best of my knowledge and  
belief, and that this organization either owns  
a working interest or unleased mineral interest in the  
land including the proposed bottom hole location or  
has a right to drill this well at this location pursuant  
to a contract with an owner of such a mineral or  
a working interest, or to a voluntary pooling agreement  
or a compulsory pooling order heretofore entered by the  
division.

*Tamra Sessions*  
Signature Date

Tamra Sessions  
Printed Name

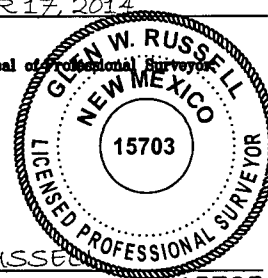
tsessions@logosresourcesllc.com  
E-mail Address

<sup>18</sup> SURVEYOR CERTIFICATION

I hereby certify that the well location shown on this plat  
was plotted from field notes of actual surveys made by  
me or under my supervision, and that the same is true  
and correct to the best of my belief.

SEPTEMBER 17, 2014  
Date of Survey

Signature and Seal of Professional Surveyor



GLEN W. RUSSELL  
Certificate Number 15703