

State of New Mexico  
Energy, Minerals and Natural Resources Department

Susana Martinez  
Governor

David Martin  
Cabinet Secretary

Brett F. Woods, Ph.D.  
Deputy Cabinet Secretary

David R. Catanach, Division Director  
Oil Conservation Division



New Mexico Oil Conservation Division approval and conditions listed below are made in accordance with OCD Rule 19.15.7.11 and are in addition to the actions approved by BLM on the following 3160-4 or 3160-5 form.

Operator Signature Date: 6/2/15

Well information:

API WELL #	Well Name	Well #	Operator Name	Type	Stat	County	Surf. Owner	UL	Sec	Twp	N/S	Rng	W/E
30-045-09249-00-00	FEDERAL A	003	XTO ENERGY, INC	G	A	San Juan	F	A	26	30	N	13	W

Application Type:

- ☒ P&A    ☐ Drilling/Casing Change    ☐ Location Change  
☐ Recomplete/DHC (For hydraulic fracturing operations review EPA Underground injection control Guidance #84)  
☐ Other:

Conditions of Approval:

Extend Dakota/perf plug up to 6208' plus excess.

NMOCD Approved by Signature

6-11-15  
Date

Shovel T-posts have been set to define the Edge of Disturbance Lines which are 50' offset from the edge of the stacked woodpile.



UNITED STATES  
DEPARTMENT OF THE INTERIOR  
BUREAU OF LAND MANAGEMENT

RECEIVED

FORM APPROVED  
OMB NO. 1004-0135  
Expires: July 31, 2010

JUN 02 2015

**SUNDRY NOTICES AND REPORTS ON WELLS**  
*Do not use this form for proposals to drill or to re-enter an abandoned well. Use form 3160-3 (APD) for such proposals.*

Farmington Field Office

Bureau of Land Management

**SUBMIT IN TRIPLICATE - Other instructions on reverse side.**

1. Type of Well <input type="checkbox"/> Oil Well <input checked="" type="checkbox"/> Gas Well <input type="checkbox"/> Other		8. Well Name and No. FEDERAL A 3
2. Name of Operator XTO ENERGY INC Contact: KRISTEN BABCOCK E-Mail: Kristen_Babcock@xtoenergy.com		9. API Well No. 30-045-09249-00-S1
3a. Address ENGLEWOOD, CO 80155	3b. Phone No. (include area code) Ph: 505-333-3206	10. Field and Pool, or Exploratory BASIN DAKOTA
4. Location of Well (Footage, Sec., T., R., M., or Survey Description) Sec 26 T30N R13W NENE 1140FNL 0990FEL 36.788350 N Lat, 108.168730 W Lon		11. County or Parish, and State SAN JUAN COUNTY, NM

## 12. CHECK APPROPRIATE BOX(ES) TO INDICATE NATURE OF NOTICE, REPORT, OR OTHER DATA

TYPE OF SUBMISSION	TYPE OF ACTION			
<input checked="" type="checkbox"/> Notice of Intent	<input type="checkbox"/> Acidize	<input type="checkbox"/> Deepen	<input type="checkbox"/> Production (Start/Resume)	<input type="checkbox"/> Water Shut-Off
<input type="checkbox"/> Subsequent Report	<input type="checkbox"/> Alter Casing	<input type="checkbox"/> Fracture Treat	<input type="checkbox"/> Reclamation	<input type="checkbox"/> Well Integrity
<input type="checkbox"/> Final Abandonment Notice	<input type="checkbox"/> Casing Repair	<input type="checkbox"/> New Construction	<input type="checkbox"/> Recomplete	<input type="checkbox"/> Other
	<input type="checkbox"/> Change Plans	<input checked="" type="checkbox"/> Plug and Abandon	<input type="checkbox"/> Temporarily Abandon	
	<input type="checkbox"/> Convert to Injection	<input type="checkbox"/> Plug Back	<input type="checkbox"/> Water Disposal	

13. Describe Proposed or Completed Operation (clearly state all pertinent details, including estimated starting date of any proposed work and approximate duration thereof. If the proposal is to deepen directionally or recompleat horizontally, give subsurface locations and measured and true vertical depths of all pertinent markers and zones. Attach the Bond under which the work will be performed or provide the Bond No. on file with BLM/BIA. Required subsequent reports shall be filed within 30 days following completion of the involved operations. If the operation results in a multiple completion or recompleat in a new interval, a Form 3160-4 shall be filed once testing has been completed. Final Abandonment Notices shall be filed only after all requirements, including reclamation, have been completed, and the operator has determined that the site is ready for final inspection.)

XTO ENERGY INC. proposes to Plug and Abandon this well per the attached procedure, current and proposed wellbore diagrams. A Closed Loop System will be used. A Surface Reclamation Plan is not needed due to this well being located on FEE Surface.

OIL CONS. DIV DIST. 3

SEE ATTACHED FOR  
CONDITIONS OF APPROVAL

JUN 08 2015

BLM'S APPROVAL OR ACCEPTANCE OF THIS  
ACTION DOES NOT RELIEVE THE LESSEE AND  
OPERATOR FROM OBTAINING ANY OTHER  
AUTHORIZATION REQUIRED FOR OPERATIONS  
ON FEDERAL AND INDIAN LANDS

14. I hereby certify that the foregoing is true and correct. Electronic Submission #303744 verified by the BLM Well Information System For XTO ENERGY INC, sent to the Farmington Committed to AFMSS for processing by TROY SALYERS on 06/05/2015 (15TLS0254SE)	
Name (Printed/Typed) KRISTEN BABCOCK	Title REGULATORY ANALYST
Signature (Electronic Submission)	Date 06/02/2015

## THIS SPACE FOR FEDERAL OR STATE OFFICE USE

Approved By TROY SALYERS	Title PETROLEUM ENGINEER	Date 06/05/2015
Conditions of approval, if any, are attached. Approval of this notice does not warrant or certify that the applicant holds legal or equitable title to those rights in the subject lease which would entitle the applicant to conduct operations thereon.		Office Farmington

Title 18 U.S.C. Section 1001 and Title 43 U.S.C. Section 1212, make it a crime for any person knowingly and willfully to make to any department or agency of the United States any false, fictitious or fraudulent statements or representations as to any matter within its jurisdiction.

\*\* BLM REVISED \*\* BLM REVISED \*\* BLM REVISED \*\* BLM REVISED \*\* BLM REVISED \*\*

NMOCDA

BRB \_\_\_\_\_  
MTG \_\_\_\_\_  
Approved \_\_\_\_\_

**Federal A #3  
Sec 26, T 30 N, R 13 W  
San Juan County, New Mexico  
5/11/2015**

**Plug and Abandon Procedure**

**AFE Number:** 1503286

**Spud Date:** 10/02/1960

**Surface Casing:** 8-5/8", 24#, J-55 csg @ 233'. Cmt'd w/200 sx. Circ 50 sx cmt to surf.

**Production Casing:** 28 jts 4-1/2", 11.6#, J-55 csg & 178 jts 4-1/2", 9.5#, J-55 csg @ 6,583'. Cmt'd w/280 sx. Circ cmt to surf.  
*Capacity: .0162 bbls/ft or .6825 gal/ft*

**Casing Leaks:** Inspection Log dated 8/28/1963 shows bad casing fr/3,570' – 4,170'.  
Sqz'd 100 sx cmt on 8/28/1963. Resqz'd 100 sx cmt on 8/29/1963.

**Production Tubing:** 2-3/8" string

**Perforations:** Dakota: 6,356' – 6,488'

**Other in Hole:** CIBP @ 6,308'

**PBTD:** 6,548'

**Recent Production:** 0 MCFPD, 0 BWPD, 0 BOPD (INA on 11/26/2014). BH open.

*\*Notify NMOCD & BLM 24 hours prior to beginning plugging operations\**

1. Check for COA's and approved NOI before beginning operations.
2. Test rig anchors.
3. Set flowback tank.
4. MIRU completion rig. Review JSA.
5. ND WH. NU & FT BOP.
6. Circulate hole clean.
7. TOH tubing.
8. MIRU WLU. Review JSA.
9. Run CBL/CCL log from CIBP @ 6,308' – surface. Correlate to GR on Sonic Log dated 10/14/1960. Send CBL to engineer.

*\*Plugs may need altered based off CBL results. Contact engineer with changes.\**

10. TIH tubing.
11. MIRU cement truck. Review JSA.

*\*Casing will not pressure test. All plugs below the Mesaverde must be tagged.\**

12. **Perforation Isolation & Dakota Top Plug (6,308' – 6,258')**: Pump 8 sx Class "B" cement (15.6 ppg, 1.18 cuft/sx yield) down tubing and spot a balanced plug from 6,308' – 6,258' (volume calculated with 50' excess). WOC. Tag plug.
13. **Mancos Top Plug (4,628' – 4,528')**: Pump 12 sx Class "B" cement (15.6 ppg, 1.18 cuft/sx yield) down tubing and spot a balanced plug from 4,628' – 4,528' (volume calculated with 50' excess). WOC. Tag plug.
14. **Mesaverde Top Plug (3,417' – 3,317')**: Perforate 3 squeeze holes at 3,417'. Establish injection rate into squeeze holes. Set 4-1/2" CICR at 3,367'. Pump 51 sx Class "B" cement (15.6 ppg, 1.18 cuft/sx yield). Squeeze 39 sx outside casing and leave 12 sx inside casing from 3,417' – 3,317' (volume calculated with 50' excess inside and 100% excess outside). WOC.
15. Attempt to pressure test casing fr/3,317' – surface. If casing doesn't pressure test, tag subsequent plugs.
16. **Chacra Top Plug (2,900' – 2,800')**: Perforate 3 squeeze holes at 2,900'. Establish injection rate into squeeze holes. Set 4-1/2" CICR at 2,850'. Pump 51 sx Class "B" cement (15.6 ppg, 1.18 cuft/sx yield). Squeeze 39 sx outside casing and leave 12 sx inside casing from 2,900' – 2,800' (volume calculated with 50' excess inside and 100% excess outside).
17. **Lewis & Pictured Cliffs Top Plug (2,035' – 1,767')**: Perforate 3 squeeze holes at 2,035'. Establish injection rate into squeeze holes. Set 4-1/2" CICR at 1,985'. Pump 129 sx Class "B" cement (15.6 ppg, 1.18 cuft/sx yield). Squeeze 104 sx outside casing and leave 25 sx inside casing from 2,035' – 1,767' (volume calculated with 50' excess inside and 100% excess outside).
18. **Fruitland Coal Top Plug (1,238' – 1,138')**: Perforate 3 squeeze holes at 1,238'. Establish injection rate into squeeze holes. Set 4-1/2" CICR at 1,188'. Pump 51 sx Class "B" cement (15.6 ppg, 1.18 cuft/sx yield). Squeeze 39 sx outside casing and leave 12 sx inside casing from 1,238' – 1,138' (volume calculated with 50' excess inside and 100% excess outside).
19. **Kirtland & Ojo Top & Surface Plug (420' – Surface)**: Perforate 3 squeeze holes at 420'. Establish injection rate into squeeze holes. Pump 207 sx Class "B" cement (15.6 ppg, 1.18 cuft/sx yield). Squeeze 170 sx outside casing and leave 37 sx inside casing from 420' – surface (volume calculated with 50' excess inside and 100% excess outside).
20. RDMO WLU.
21. TOH & LD tubing.
22. RDMO cement truck.
23. WOC 24 hours.
24. Cut off WH. Fill in casing as needed with cement. Install above ground P&A marker.
25. Cut off anchors and reclaim location.

## Checklist

### Regulatory:

1. NOI to P&A on form C-103
2. Submit a post-work sundry on form C-103 which details the P&A work and location work within 30 days of completing all required restoration work.

### Equipment:

1. 1 flowback tank
2. 4 – 4-1/2" cement retainers
3. 509 sx Class "B" cement
4. 1 above ground marker

### Services:

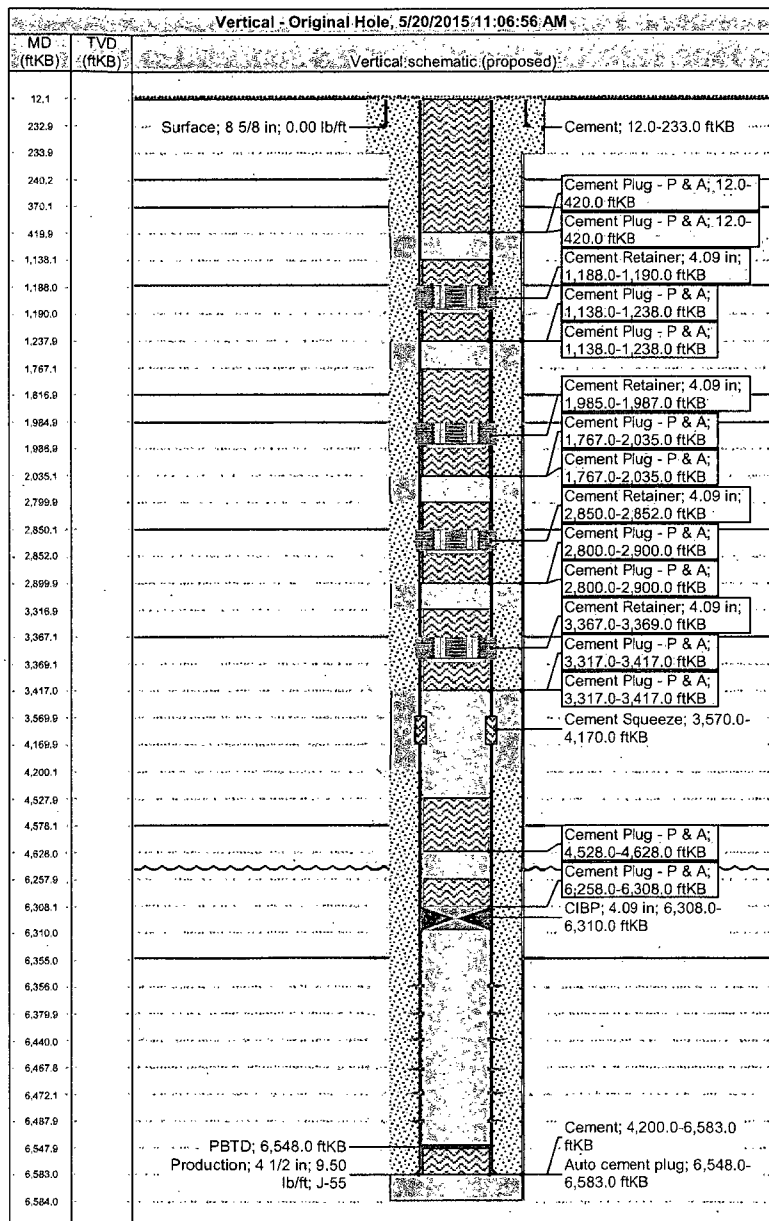
1. Completion rig
2. Cement truck
3. Wireline Unit



# XTO - Proposed P&A Wellbore Diagram

Well Name: Federal A 03

API/UWI 30045092490000	XTO Accounting ID 67511	Permit Number	State/Province New Mexico	County San Juan
Location T30N-R13W-S26	Spud Date 10/2/1960 00:00	Original KB Elevation (ft) 5,802.00	Ground/Corrected Ground Elevation (ft) 5,790.00	KB-Ground Distance (ft) 12.00



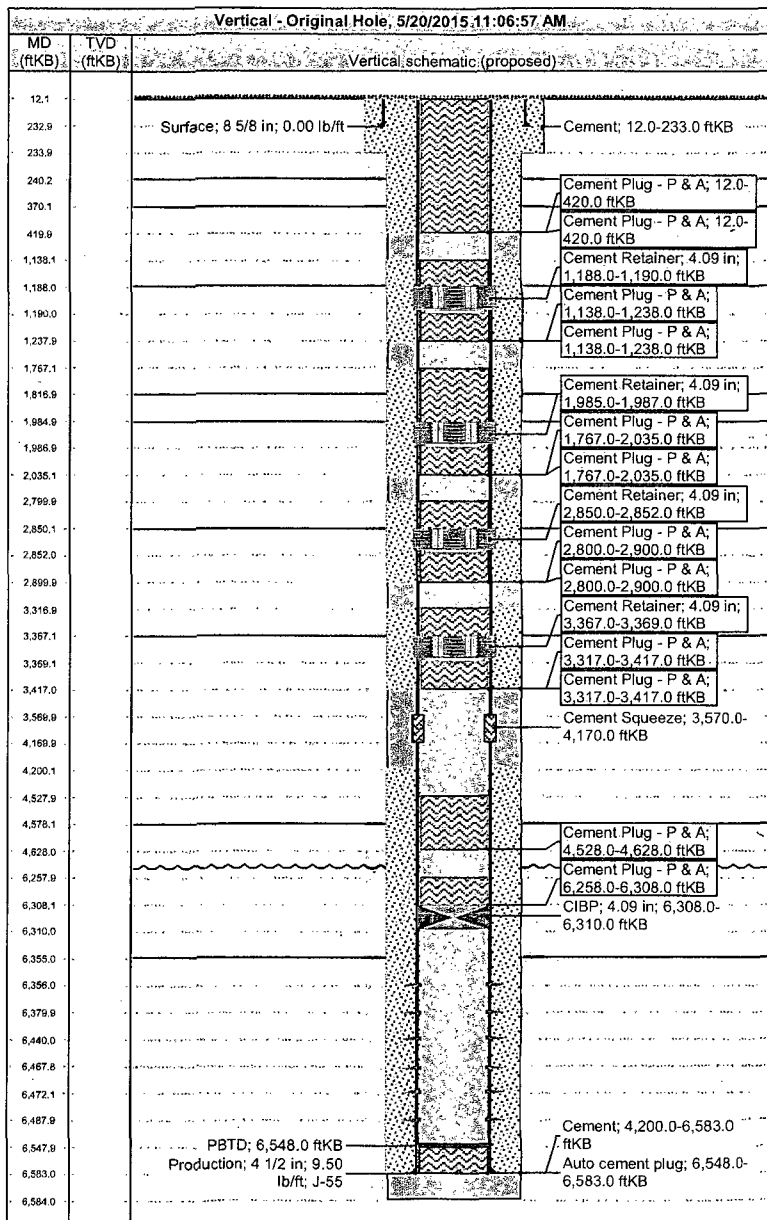
Formations			
Formation Name	Final Top MD (ftKB)	Final Bottom MD (ftKB)	
Nacimiento	12.0	240.0	
Formation Name	Final Top MD (ftKB)	Final Bottom MD (ftKB)	
Ojo Alamo	240.0	370.0	
Formation Name	Final Top MD (ftKB)	Final Bottom MD (ftKB)	
Kirtland	370.0	1,188.0	
Formation Name	Final Top MD (ftKB)	Final Bottom MD (ftKB)	
Fruitland Coal	1,188.0	1,817.0	
Formation Name	Final Top MD (ftKB)	Final Bottom MD (ftKB)	
Pictured Cliffs	1,817.0	1,985.0	
Formation Name	Final Top MD (ftKB)	Final Bottom MD (ftKB)	
Lewis	1,985.0	2,850.0	
Formation Name	Final Top MD (ftKB)	Final Bottom MD (ftKB)	
Chacra	2,850.0	3,367.0	
Formation Name	Final Top MD (ftKB)	Final Bottom MD (ftKB)	
Mesaverde	3,367.0	4,578.0	
Formation Name	Final Top MD (ftKB)	Final Bottom MD (ftKB)	
Mancos	4,578.0	6,355.0	
Formation Name	Final Top MD (ftKB)	Final Bottom MD (ftKB)	
Dakota	6,355.0		
Wellbores			
Wellbore Name		Parent Wellbore	
Original Hole		Original Hole	
Start Depth (ftKB)		Profile Type	Kick Off Depth (ftKB)
Casing Strings			
Csg. Des	Set Depth (ftKB)	OD (in)	Wt/Len (lb/ft)
Surface	233.0	8 5/8	
Production	6,583.0	4 1/2	9.50
J-55			
Cement			
Des	Type	String	Com
Surface Casing Cement	Casing	Surface, 233.0ftKB	Cmt'd w/200 sx
Production Casing Cement	Casing	Production, 6,583.0ftKB	Cmt'd with 280 sx 50-50 Dyamix, 2% gel. Complete returns.
Cement Squeeze	Squeeze	Production, 6,583.0ftKB	Sqz'd w/200 sx
Cement Plug - P & A	Plug	Production, 6,583.0ftKB	Plug 1: Pump 8 sx f/6,308' - 6,258'.
Cement Plug - P & A	Plug	Production, 6,583.0ftKB	Plug 2: Pump 12 sx f/4,628' - 4,528'.
Cement Plug - P & A	Casing	Production, 6,583.0ftKB	Plug 3 (outside): Pump 39 sx f/3,417' - 3,317'.
Cement Plug - P & A	Plug	Production, 6,583.0ftKB	Plug 3 (inside): Pump 12 sx f/3,417' - 3,317'.
Cement Plug - P & A	Casing	Production, 6,583.0ftKB	Plug 4 (outside): Pump 39 sx f/2,900' - 2,800'.



# XTO - Proposed P&A Wellbore Diagram

Well Name: Federal A 03

API/UWI 30045092490000	XTO Accounting ID 67511	Permit Number	State/Province New Mexico	County San Juan
Location T30N-R13W-S26	Spud Date 10/2/1960 00:00	Original KB Elevation (ft) 5,802.00	Ground/Corrected Ground Elevation (ft) 5,790.00	KB-Ground Distance (ft) 12.00



Des	Type	String	Com
Cement Plug - P & A	Plug	Production, 6,583.0ftKB	Plug 4 (inside): Pump 12 sx f/2,900' - 2,800'.
Cement Plug - P & A	Casing	Production, 6,583.0ftKB	Plug 5 (outside): Pump 104 sx f/2,035' - 1,767'.
Cement Plug - P & A	Plug	Production, 6,583.0ftKB	Plug 5 (inside): Pump 25 sx f/2,035' - 1,767'.
Cement Plug - P & A	Casing	Production, 6,583.0ftKB	Plug 6 (outside): Pump 39 sx f/1,238' - 1,138'.
Cement Plug - P & A	Plug	Production, 6,583.0ftKB	Plug 6 (inside): Pump 12 sx f/1,238' - 1,138'.
Cement Plug - P & A	Casing	Production, 6,583.0ftKB	Plug 7 (outside): Pump 170 sx f/420' - surf.
Cement Plug - P & A	Plug	Production, 6,583.0ftKB	Plug 7 (inside): Pump 36 sx f/420' - surf.

Date	Top (ftKB)	Btm (ftKB)	Zone
	6,356.0	6,380.0	Dakota, Original Hole
	6,440.0	6,468.0	Dakota, Original Hole
	6,472.0	6,488.0	Dakota, Original Hole

Des	OD (in)	Top (ftKB)	Btm (ftKB)
Cement Retainer	4.09	3,367.0	3,369.0
Cement Retainer	4.09	2,850.0	2,852.0
Cement Retainer	4.09	1,985.0	1,987.0
Cement Retainer	4.09	1,188.0	1,190.0
CIBP	4.09	6,308.0	6,310.0





UNITED STATES DEPARTMENT OF THE INTERIOR  
BUREAU OF LAND MANAGEMENT  
FARMINGTON DISTRICT OFFICE  
6251 COLLEGE BLVD.  
FARMINGTON, NEW MEXICO 87402

Attachment to notice of  
Intention to Abandon:

Re: Permanent Abandonment  
Well: Federal A #3

CONDITIONS OF APPROVAL

1. Plugging operations authorized are subject to the attached "General Requirements for Permanent Abandonment of Wells on Federal and Indian Lease."
2. Farmington Office is to be notified at least 24 hours before the plugging operations commence (505) 564-7750.
3. The following modifications to your plugging program are to be made:
  - a) Set a plug (5547-5437) ft. to cover the Gallup top. BLM picks top of Gallup at 5497 ft.
  - b) Set a plug (1557-1457) ft. inside/outside to cover the Fruitland top. BLM picks top of Fruitland at 1507 ft.
  - c) Set the surface plug (430-0) ft. inside/outside to cover the Kirtland and Ojo Alamo tops, surface casing shoe and surface plug. Adjust cement volume accordingly.

Operator will run a CBL from 6308 ft. to surface to verify cement top. Outside plugs will be required if cement top is not adequate for zonal isolation. Submit electronic copy of the log to the following addresses: [tsalyers@blm.gov](mailto:tsalyers@blm.gov) [Brandon.Powell@state.nm.us](mailto:Brandon.Powell@state.nm.us)

You are also required to place cement excesses per 4.2 and 4.4 of the attached General Requirements.

Office Hours: 7:45 a.m. to 4:30 p.m.