

District I
1625 N. French Dr., Hobbs, NM 88240
District II
811 S. First St., Artesia, NM 88210
District III
1000 Rio Brazos Road, Aztec, NM 87410
District IV
1220 S. St. Francis Dr., Santa Fe, NM 87505

State of New Mexico
Energy Minerals and Natural Resources
Department
Oil Conservation Division
1220 South St. Francis Dr.
Santa Fe, NM 87505

Form C-144
Revised June 6, 2013

For temporary pits, below-grade tanks, and multi-well fluid management pits, submit to the appropriate NMOCD District Office.
For permanent pits submit to the Santa Fe Environmental Bureau office and provide a copy to the appropriate NMOCD District Office.

Pit, Below-Grade Tank, or

12882 Proposed Alternative Method Permit or Closure Plan Application

OIL CONS. DIV DIST. 3

Type of action: ☐ Below grade tank registration
45-35645 ☒ Permit of a pit or proposed alternative method
☐ Closure of a pit, below-grade tank, or proposed alternative method
☐ Modification to an existing permit/or registration
☐ Closure plan only submitted for an existing permitted or non-permitted pit, below-grade tank, or proposed alternative method

APR 21 2015

Instructions: Please submit one application (Form C-144) per individual pit, below-grade tank or alternative request

Please be advised that approval of this request does not relieve the operator of liability should operations result in pollution of surface water, ground water or the environment. Nor does approval relieve the operator of its responsibility to comply with any other applicable governmental authority's rules, regulations or ordinances.

1.
Operator: Logos Operating, LLC. OGRID #: 289408
Address: 4001 North Butler Ave, Building 7101, Farmington, NM 87401
Facility or well name: BRANNON FEDERAL 292H
API Number: 30-045-35645 OCD Permit Number: _____
U/L or Qtr/Qtr E Section 28 Township 25N Range 09W County: San Juan
Center of Proposed Design: Latitude 36.374415°N Longitude 107.802399°W NAD: ☐ 1927 ☒ 1983
Surface Owner: ☒ Federal ☐ State ☐ Private ☐ Tribal Trust or Indian Allotment

2.
☒ **Pit:** Subsection F, G or J of 19.15.17.11 NMAC
Temporary: ☒ Drilling ☐ Workover
☐ Permanent ☐ Emergency ☐ Cavitation ☐ P&A ☐ Multi-Well Fluid Management Low Chloride Drilling Fluid ☒ yes ☐ no
☒ Lined ☐ Unlined Liner type: Thickness 20 mil ☒ LLDPE ☐ HDPE ☐ PVC ☐ Other _____
☒ String-Reinforced
Liner Seams: ☒ Welded ☒ Factory ☐ Other _____ Volume: 8,000 bbl Dimensions: L 135' x W 75' x D 12'

3.
☐ **Below-grade tank:** Subsection I of 19.15.17.11 NMAC
Volume: _____ bbl Type of fluid: _____
Tank Construction material: _____
☐ Secondary containment with leak detection ☐ Visible sidewalls, liner, 6-inch lift and automatic overflow shut-off
☐ Visible sidewalls and liner ☐ Visible sidewalls only ☐ Other _____
Liner type: Thickness _____ mil ☐ HDPE ☐ PVC ☐ Other _____

4.
☐ **Alternative Method:**
Submittal of an exception request is required. Exceptions must be submitted to the Santa Fe Environmental Bureau office for consideration of approval.

5.
Fencing: Subsection D of 19.15.17.11 NMAC (Applies to permanent pits, temporary pits, and below-grade tanks)
☐ Chain link, six feet in height, two strands of barbed wire at top (Required if located within 1000 feet of a permanent residence, school, hospital, institution or church)
☐ Four foot height, four strands of barbed wire evenly spaced between one and four feet
☒ Alternate. Please specify: 4' hog wire with one strand of barbed wire on top

6.

Netting: Subsection E of 19.15.17.11 NMAC (*Applies to permanent pits and permanent open top tanks*)

☐ Screen ☐ Netting ☐ Other _____

☐ Monthly inspections (If netting or screening is not physically feasible)

7.

Signs: Subsection C of 19.15.17.11 NMAC

☐ 12"x 24", 2" lettering, providing Operator's name, site location, and emergency telephone numbers

☒ Signed in compliance with 19.15.16.8 NMAC

8.

Variances and Exceptions:

Justifications and/or demonstrations of equivalency are required. Please refer to 19.15.17 NMAC for guidance.

Please check a box if one or more of the following is requested, if not leave blank:

☒ Variance(s): Requests must be submitted to the appropriate division district for consideration of approval.

☐ Exception(s): Requests must be submitted to the Santa Fe Environmental Bureau office for consideration of approval.

9.

Siting Criteria (regarding permitting): 19.15.17.10 NMAC

Instructions: The applicant must demonstrate compliance for each siting criteria below in the application. Recommendations of acceptable source material are provided below. Siting criteria does not apply to drying pads or above-grade tanks.

General siting

Ground water is less than 25 feet below the bottom of a low chloride temporary pit or below-grade tank.

- ☐ NM Office of the State Engineer - iWATERS database search; ☐ USGS; ☐ Data obtained from nearby wells

☐ Yes ☒ No
☐ NA

Ground water is less than 50 feet below the bottom of a Temporary pit, permanent pit, or Multi-Well Fluid Management pit.

NM Office of the State Engineer - iWATERS database search; USGS; Data obtained from nearby wells

☐ Yes ☒ No
☐ NA

Within incorporated municipal boundaries or within a defined municipal fresh water well field covered under a municipal ordinance adopted pursuant to NMSA 1978, Section 3-27-3, as amended. **(Does not apply to below grade tanks)**

- Written confirmation or verification from the municipality; Written approval obtained from the municipality

☐ Yes ☒ No

Within the area overlying a subsurface mine. **(Does not apply to below grade tanks)**

- Written confirmation or verification or map from the NM EMNRD-Mining and Mineral Division

☐ Yes ☒ No

Within an unstable area. **(Does not apply to below grade tanks)**

- Engineering measures incorporated into the design; NM Bureau of Geology & Mineral Resources; USGS; NM Geological Society; Topographic map

☐ Yes ☒ No

Within a 100-year floodplain. **(Does not apply to below grade tanks)**

- FEMA map

☐ Yes ☒ No

Below Grade Tanks

Within 100 feet of a continuously flowing watercourse, significant watercourse, lake bed, sinkhole, wetland or playa lake (measured from the ordinary high-water mark).

- Topographic map; Visual inspection (certification) of the proposed site

☐ Yes ☐ No

Within 200 horizontal feet of a spring or a fresh water well used for public or livestock consumption;

- NM Office of the State Engineer - iWATERS database search; Visual inspection (certification) of the proposed site

☐ Yes ☐ No

Temporary Pit using Low Chloride Drilling Fluid (maximum chloride content 15,000 mg/liter)

Within 100 feet of a continuously flowing watercourse, or any other significant watercourse or within 200 feet of any lakebed, sinkhole, or playa lake (measured from the ordinary high-water mark). (Applies to low chloride temporary pits.)

- Topographic map; Visual inspection (certification) of the proposed site

☐ Yes ☒ No

Within 300 feet from a occupied permanent residence, school, hospital, institution, or church in existence at the time of initial application.

- Visual inspection (certification) of the proposed site; Aerial photo; Satellite image

☐ Yes ☒ No

Within 200 horizontal feet of a spring or a private, domestic fresh water well used by less than five households for domestic or stock watering purposes, or 300feet of any other fresh water well or spring, in existence at the time of the initial application.

NM Office of the State Engineer - iWATERS database search; Visual inspection (certification) of the proposed site

☐ Yes ☒ No

Within 100 feet of a wetland.

- US Fish and Wildlife Wetland Identification map; Topographic map; Visual inspection (certification) of the proposed site

☐ Yes ☒ No

Temporary Pit Non-low chloride drilling fluid

Within 300 feet of a continuously flowing watercourse, or any other significant watercourse, or within 200 feet of any lakebed, sinkhole, or playa lake (measured from the ordinary high-water mark).

- Topographic map; Visual inspection (certification) of the proposed site

☐ Yes ☐ No

Within 300 feet from a permanent residence, school, hospital, institution, or church in existence at the time of initial application.

- Visual inspection (certification) of the proposed site; Aerial photo; Satellite image

☐ Yes ☐ No

Within 500 horizontal feet of a spring or a private, domestic fresh water well used by less than five households for domestic or stock watering purposes, or 1000 feet of any other fresh water well or spring, in the existence at the time of the initial application;

- NM Office of the State Engineer - iWATERS database search; Visual inspection (certification) of the proposed site

☐ Yes ☐ No

Within 300 feet of a wetland.

- US Fish and Wildlife Wetland Identification map; Topographic map; Visual inspection (certification) of the proposed site

☐ Yes ☐ No

Permanent Pit or Multi-Well Fluid Management Pit

Within 300 feet of a continuously flowing watercourse, or 200 feet of any other significant watercourse, or lakebed, sinkhole, or playa lake (measured from the ordinary high-water mark).

- Topographic map; Visual inspection (certification) of the proposed site

☐ Yes ☐ No

Within 1000 feet from a permanent residence, school, hospital, institution, or church in existence at the time of initial application.

- Visual inspection (certification) of the proposed site; Aerial photo; Satellite image

☐ Yes ☐ No

Within 500 horizontal feet of a spring or a fresh water well used for domestic or stock watering purposes, in existence at the time of initial application.

- NM Office of the State Engineer - iWATERS database search; Visual inspection (certification) of the proposed site

☐ Yes ☐ No

Within 500 feet of a wetland.

- US Fish and Wildlife Wetland Identification map; Topographic map; Visual inspection (certification) of the proposed site

☐ Yes ☐ No

10.

Temporary Pits, Emergency Pits, and Below-grade Tanks Permit Application Attachment Checklist: Subsection B of 19.15.17.9 NMAC

Instructions: Each of the following items must be attached to the application. Please indicate, by a check mark in the box, that the documents are attached.

- ☐ Hydrogeologic Report (Below-grade Tanks) - based upon the requirements of Paragraph (4) of Subsection B of 19.15.17.9 NMAC
- ☒ Hydrogeologic Data (Temporary and Emergency Pits) - based upon the requirements of Paragraph (2) of Subsection B of 19.15.17.9 NMAC
- ☒ Siting Criteria Compliance Demonstrations - based upon the appropriate requirements of 19.15.17.10 NMAC
- ☒ Design Plan - based upon the appropriate requirements of 19.15.17.11 NMAC
- ☒ Operating and Maintenance Plan - based upon the appropriate requirements of 19.15.17.12 NMAC
- ☒ Closure Plan (Please complete Boxes 14 through 18, if applicable) - based upon the appropriate requirements of Subsection C of 19.15.17.9 NMAC and 19.15.17.13 NMAC

☐ Previously Approved Design (attach copy of design) API Number: _____ or Permit Number: _____

11.

Multi-Well Fluid Management Pit Checklist: Subsection B of 19.15.17.9 NMAC

Instructions: Each of the following items must be attached to the application. Please indicate, by a check mark in the box, that the documents are attached.

- ☐ Design Plan - based upon the appropriate requirements of 19.15.17.11 NMAC
- ☐ Operating and Maintenance Plan - based upon the appropriate requirements of 19.15.17.12 NMAC
- ☐ A List of wells with approved application for permit to drill associated with the pit.
- ☐ Closure Plan (Please complete Boxes 14 through 18, if applicable) - based upon the appropriate requirements of Subsection C of 19.15.17.9 NMAC and 19.15.17.13 NMAC
- ☐ Hydrogeologic Data - based upon the requirements of Paragraph (4) of Subsection B of 19.15.17.9 NMAC
- ☐ Siting Criteria Compliance Demonstrations - based upon the appropriate requirements of 19.15.17.10 NMAC

☐ Previously Approved Design (attach copy of design) API Number: _____ or Permit Number: _____

12.
Permanent Pits Permit Application Checklist: Subsection B of 19.15.17.9 NMAC

Instructions: Each of the following items must be attached to the application. Please indicate, by a check mark in the box, that the documents are attached.

- ☐ Hydrogeologic Report - based upon the requirements of Paragraph (1) of Subsection B of 19.15.17.9 NMAC
- ☐ Siting Criteria Compliance Demonstrations - based upon the appropriate requirements of 19.15.17.10 NMAC
- ☐ Climatological Factors Assessment
- ☐ Certified Engineering Design Plans - based upon the appropriate requirements of 19.15.17.11 NMAC
- ☐ Dike Protection and Structural Integrity Design - based upon the appropriate requirements of 19.15.17.11 NMAC
- ☐ Leak Detection Design - based upon the appropriate requirements of 19.15.17.11 NMAC
- ☐ Liner Specifications and Compatibility Assessment - based upon the appropriate requirements of 19.15.17.11 NMAC
- ☐ Quality Control/Quality Assurance Construction and Installation Plan
- ☐ Operating and Maintenance Plan - based upon the appropriate requirements of 19.15.17.12 NMAC
- ☐ Freeboard and Overtopping Prevention Plan - based upon the appropriate requirements of 19.15.17.11 NMAC
- ☐ Nuisance or Hazardous Odors, including H₂S, Prevention Plan
- ☐ Emergency Response Plan
- ☐ Oil Field Waste Stream Characterization
- ☐ Monitoring and Inspection Plan
- ☐ Erosion Control Plan
- ☐ Closure Plan - based upon the appropriate requirements of Subsection C of 19.15.17.9 NMAC and 19.15.17.13 NMAC

13.
Proposed Closure: 19.15.17.13 NMAC

Instructions: Please complete the applicable boxes, Boxes 14 through 18, in regards to the proposed closure plan.

- Type: ☒ Drilling ☐ Workover ☐ Emergency ☐ Cavitation ☐ P&A ☐ Permanent Pit ☐ Below-grade Tank ☐ Multi-well Fluid Management Pit
☐ Alternative
- Proposed Closure Method: ☐ Waste Excavation and Removal
☐ Waste Removal (Closed-loop systems only)
☒ On-site Closure Method (Only for temporary pits and closed-loop systems)
☒ In-place Burial ☐ On-site Trench Burial
☐ Alternative Closure Method

14.
Waste Excavation and Removal Closure Plan Checklist: (19.15.17.13 NMAC) **Instructions:** Each of the following items must be attached to the closure plan. Please indicate, by a check mark in the box, that the documents are attached.

- ☐ Protocols and Procedures - based upon the appropriate requirements of 19.15.17.13 NMAC
- ☐ Confirmation Sampling Plan (if applicable) - based upon the appropriate requirements of Subsection C of 19.15.17.13 NMAC
- ☐ Disposal Facility Name and Permit Number (for liquids, drilling fluids and drill cuttings)
- ☐ Soil Backfill and Cover Design Specifications - based upon the appropriate requirements of Subsection H of 19.15.17.13 NMAC
- ☐ Re-vegetation Plan - based upon the appropriate requirements of Subsection H of 19.15.17.13 NMAC
- ☐ Site Reclamation Plan - based upon the appropriate requirements of Subsection H of 19.15.17.13 NMAC

15.
Siting Criteria (regarding on-site closure methods only): 19.15.17.10 NMAC

Instructions: Each siting criteria requires a demonstration of compliance in the closure plan. Recommendations of acceptable source material are provided below. Requests regarding changes to certain siting criteria require justifications and/or demonstrations of equivalency. Please refer to 19.15.17.10 NMAC for guidance.

Ground water is less than 25 feet below the bottom of the buried waste. - NM Office of the State Engineer - iWATERS database search; USGS; Data obtained from nearby wells	<input type="checkbox"/> Yes <input checked="" type="checkbox"/> No <input type="checkbox"/> NA
Ground water is between 25-50 feet below the bottom of the buried waste - NM Office of the State Engineer - iWATERS database search; USGS; Data obtained from nearby wells	<input type="checkbox"/> Yes <input checked="" type="checkbox"/> No <input type="checkbox"/> NA
Ground water is more than 100 feet below the bottom of the buried waste. - NM Office of the State Engineer - iWATERS database search; USGS; Data obtained from nearby wells	<input checked="" type="checkbox"/> Yes <input type="checkbox"/> No <input type="checkbox"/> NA
Within 100 feet of a continuously flowing watercourse, or 200 feet of any other significant watercourse, lakebed, sinkhole, or playa lake (measured from the ordinary high-water mark). - Topographic map; Visual inspection (certification) of the proposed site	<input type="checkbox"/> Yes <input checked="" type="checkbox"/> No
Within 300 feet from a permanent residence, school, hospital, institution, or church in existence at the time of initial application. - Visual inspection (certification) of the proposed site; Aerial photo; Satellite image	<input type="checkbox"/> Yes <input checked="" type="checkbox"/> No
Within 300 horizontal feet of a private, domestic fresh water well or spring used for domestic or stock watering purposes, in existence at the time of initial application. - NM Office of the State Engineer - iWATERS database; Visual inspection (certification) of the proposed site	<input type="checkbox"/> Yes <input checked="" type="checkbox"/> No
Written confirmation or verification from the municipality; Written approval obtained from the municipality	<input type="checkbox"/> Yes <input type="checkbox"/> No
Within 300 feet of a wetland. US Fish and Wildlife Wetland Identification map; Topographic map; Visual inspection (certification) of the proposed site	<input type="checkbox"/> Yes <input checked="" type="checkbox"/> No
Within incorporated municipal boundaries or within a defined municipal fresh water well field covered under a municipal ordinance	

adopted pursuant to NMSA 1978, Section 3-27-3, as amended.

- Written confirmation or verification from the municipality; Written approval obtained from the municipality

☐ Yes ☒ No

Within the area overlying a subsurface mine.

- Written confirmation or verification or map from the NM EMNRD-Mining and Mineral Division

☐ Yes ☒ No

Within an unstable area.

- Engineering measures incorporated into the design; NM Bureau of Geology & Mineral Resources; USGS; NM Geological Society; Topographic map

☐ Yes ☒ No

Within a 100-year floodplain.

- FEMA map

☐ Yes ☒ No

16.

On-Site Closure Plan Checklist: (19.15.17.13 NMAC) *Instructions: Each of the following items must be attached to the closure plan. Please indicate, by a check mark in the box, that the documents are attached.*

- ☒ Siting Criteria Compliance Demonstrations - based upon the appropriate requirements of 19.15.17.10 NMAC
- ☒ Proof of Surface Owner Notice - based upon the appropriate requirements of Subsection E of 19.15.17.13 NMAC
- ☐ Construction/Design Plan of Burial Trench (if applicable) based upon the appropriate requirements of Subsection K of 19.15.17.11 NMAC
- ☒ Construction/Design Plan of Temporary Pit (for in-place burial of a drying pad) - based upon the appropriate requirements of 19.15.17.11 NMAC
- ☒ Protocols and Procedures - based upon the appropriate requirements of 19.15.17.13 NMAC
- ☒ Confirmation Sampling Plan (if applicable) - based upon the appropriate requirements of 19.15.17.13 NMAC
- ☐ Waste Material Sampling Plan - based upon the appropriate requirements of 19.15.17.13 NMAC
- ☒ Disposal Facility Name and Permit Number (for liquids, drilling fluids and drill cuttings or in case on-site closure standards cannot be achieved)
- ☒ Soil Cover Design - based upon the appropriate requirements of Subsection H of 19.15.17.13 NMAC
- ☒ Re-vegetation Plan - based upon the appropriate requirements of Subsection H of 19.15.17.13 NMAC
- ☒ Site Reclamation Plan - based upon the appropriate requirements of Subsection H of 19.15.17.13 NMAC

17.

Operator Application Certification:

I hereby certify that the information submitted with this application is true, accurate and complete to the best of my knowledge and belief.

Name (Print): Tamra Sessions

Title: Operations Technician

Signature: 

Date: 4-21-15

e-mail address: tsessions@logosresourcesllc.com

Telephone: 505-330-9333

18.

OCD Approval: ☒ Permit Application (including closure plan) ☐ Closure Plan (only) ☐ OCD Conditions (see attachment)

OCD Representative Signature: 

Approval Date: 4/23/2015

Title: Compliance Officer

OCD Permit Number: _____

19.

Closure Report (required within 60 days of closure completion): 19.15.17.13 NMAC

Instructions: Operators are required to obtain an approved closure plan prior to implementing any closure activities and submitting the closure report. The closure report is required to be submitted to the division within 60 days of the completion of the closure activities. Please do not complete this section of the form until an approved closure plan has been obtained and the closure activities have been completed.

☐ Closure Completion Date: _____

20.

Closure Method:

- ☐ Waste Excavation and Removal ☐ On-Site Closure Method ☐ Alternative Closure Method ☐ Waste Removal (Closed-loop systems only)
- ☐ If different from approved plan, please explain.

21.

Closure Report Attachment Checklist: *Instructions: Each of the following items must be attached to the closure report. Please indicate, by a check mark in the box, that the documents are attached.*

- ☐ Proof of Closure Notice (surface owner and division)
- ☐ Proof of Deed Notice (required for on-site closure for private land only)
- ☐ Plot Plan (for on-site closures and temporary pits)
- ☐ Confirmation Sampling Analytical Results (if applicable)
- ☐ Waste Material Sampling Analytical Results (required for on-site closure)
- ☐ Disposal Facility Name and Permit Number
- ☐ Soil Backfilling and Cover Installation
- ☐ Re-vegetation Application Rates and Seeding Technique
- ☐ Site Reclamation (Photo Documentation)

On-site Closure Location: Latitude _____ Longitude _____ NAD: ☐ 1927 ☐ 1983

Operator Closure Certification:

I hereby certify that the information and attachments submitted with this closure report is true, accurate and complete to the best of my knowledge and belief. I also certify that the closure complies with all applicable closure requirements and conditions specified in the approved closure plan.

Name (Print): _____ Title: _____

Signature: _____ Date: _____

e-mail address: _____ Telephone: _____

**Logos Operating, LLC
San Juan Basin
Variance Explanation for Temporary Pits**

All requested variances provide equal or better protection of fresh water, public health and the environment.

C-144 Item #5 Fencing

Logos is requesting a variance to rule 19.15.17.11 D (3) and shall construct all new fences utilizing 48' steel mesh field-fence (hogwire) on the bottom with a single strand of barbed wire on top. T-posts shall be installed every 12 feet and corners shall be anchored utilizing a secondary T-post.

Public Entity Closure Notification -Temporary Pit Closure Plan Attachment Item #3.

Rule 19.15.17.13 E. If the surface owner is a public entity (BLM/State/Tribal) then an email notification will be sent, of plans to close the temporary pit at least 72 hours, but no more than 1 week, prior to any closure operation. The notice will include the well name, API number, and location.

Visible Marker - Temporary Pit Closure Plan Attachment Item #13 a.

Logos has requested a variance for the visible marker that should 'extend at least four feet above mean ground level'. Logos plans to use a steel plate at least 12" x 12", flush with ground level and contain the same information as the four foot riser would have as per the rule. Upon the abandonment of all the wells on the pad, the plate will be removed and replaced with a four foot tall riser containing the same information as per the rule.

DISTRICT I
1626 N. French Dr., Hobbs, N.M. 88240
Phone: (575) 393-6161 Fax: (575) 393-0720

DISTRICT II
611 S. First St., Artesia, N.M. 88210
Phone: (575) 748-1263 Fax: (575) 748-0720

DISTRICT III
1000 Rio Bravos Rd., Aztec, N.M. 87410
Phone: (505) 334-6176 Fax: (505) 334-6170

DISTRICT IV
1220 S. St. Francis Dr., Santa Fe, NM 87505
Phone: (505) 476-3460 Fax: (505) 476-3462

State of New Mexico
Energy, Minerals & Natural Resources Department

OIL CONSERVATION DIVISION
1220 South St. Francis Dr.
Santa Fe, NM 87505

Form C-102
Revised August 1, 2011
Submit one copy to appropriate
District Office

☐ AMENDED REPORT

WELL LOCATION AND ACREAGE DEDICATION PLAT

¹ API Number	² Pool Code 64290 / 97232	³ Pool Name WHITE WASH MANCOS DAKOTA / BASIN MANCOS
⁴ Property Code	⁵ Property Name BRANNON FEDERAL	⁶ Well Number 292H
⁷ OGRID No. 289408	⁸ Operator Name LOGOS OPERATING, LLC	⁹ Elevation 6680'

¹⁰ Surface Location

UL or lot no.	Section	Township	Range	Lot Idn	Feet from the	North/South line	Feet from the	East/West line	County
E	28	25-N	9-W		1824	NORTH	300	WEST	SAN JUAN

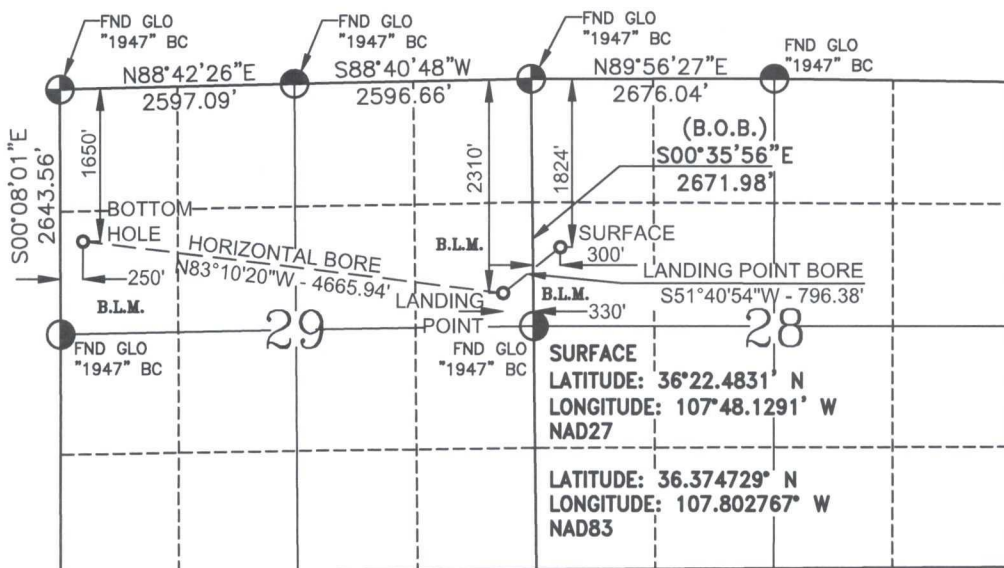
¹¹ Bottom Hole Location If Different From Surface

UL or lot no.	Section	Township	Range	Lot Idn	Feet from the	North/South line	Feet from the	East/West line	County
E	29	25-N	9-W		1650	NORTH	250	WEST	SAN JUAN

¹² Dedicated Acres	¹³ Joint or Infill	¹⁴ Consolidation Code	¹⁵ Order No.
-------------------------------	-------------------------------	----------------------------------	-------------------------

NO ALLOWABLE WILL BE ASSIGNED TO THIS COMPLETION UNTIL ALL INTERESTS HAVE BEEN CONSOLIDATED
OR A NON-STANDARD UNIT HAS BEEN APPROVED BY THE DIVISION

16



¹⁷ OPERATOR CERTIFICATION

I hereby certify that the information contained herein is true and complete to the best of my knowledge and belief, and that this organization either owns a working interest or unleased mineral interest in the land including the proposed bottom hole location or has a right to drill this well at this location pursuant to a contract with an owner of such a mineral or a working interest, or to a voluntary pooling agreement or a compulsory pooling order heretofore entered by the division.

Signature _____ Date _____

Printed Name _____

E-mail Address _____

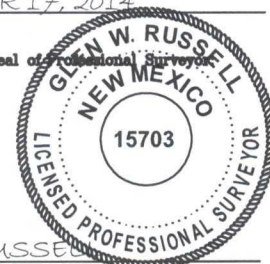
¹⁸ SURVEYOR CERTIFICATION

I hereby certify that the well location shown on this plat was plotted from field notes of actual surveys made by me or under my supervision, and that the same is true and correct to the best of my belief.

SEPTEMBER 17, 2014

Date of Survey _____

Signature and Seal of Professional Surveyor _____



GLEN W. RUSSELL
Certificate Number 15703

BOTTOM HOLE
LATITUDE: 36°22.4932' N
LONGITUDE: 107°49.2002' W
NAD27

LANDING POINT
LATITUDE: 36°22.4018' N
LONGITUDE: 107°48.2564' W
NAD27

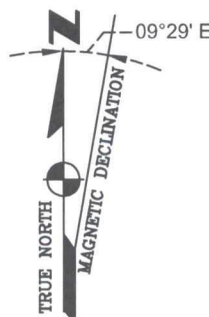
LATITUDE: 36.374897° N
LONGITUDE: 107.820620° W
NAD83

LATITUDE: 36.373374° N
LONGITUDE: 107.804889° W
NAD83

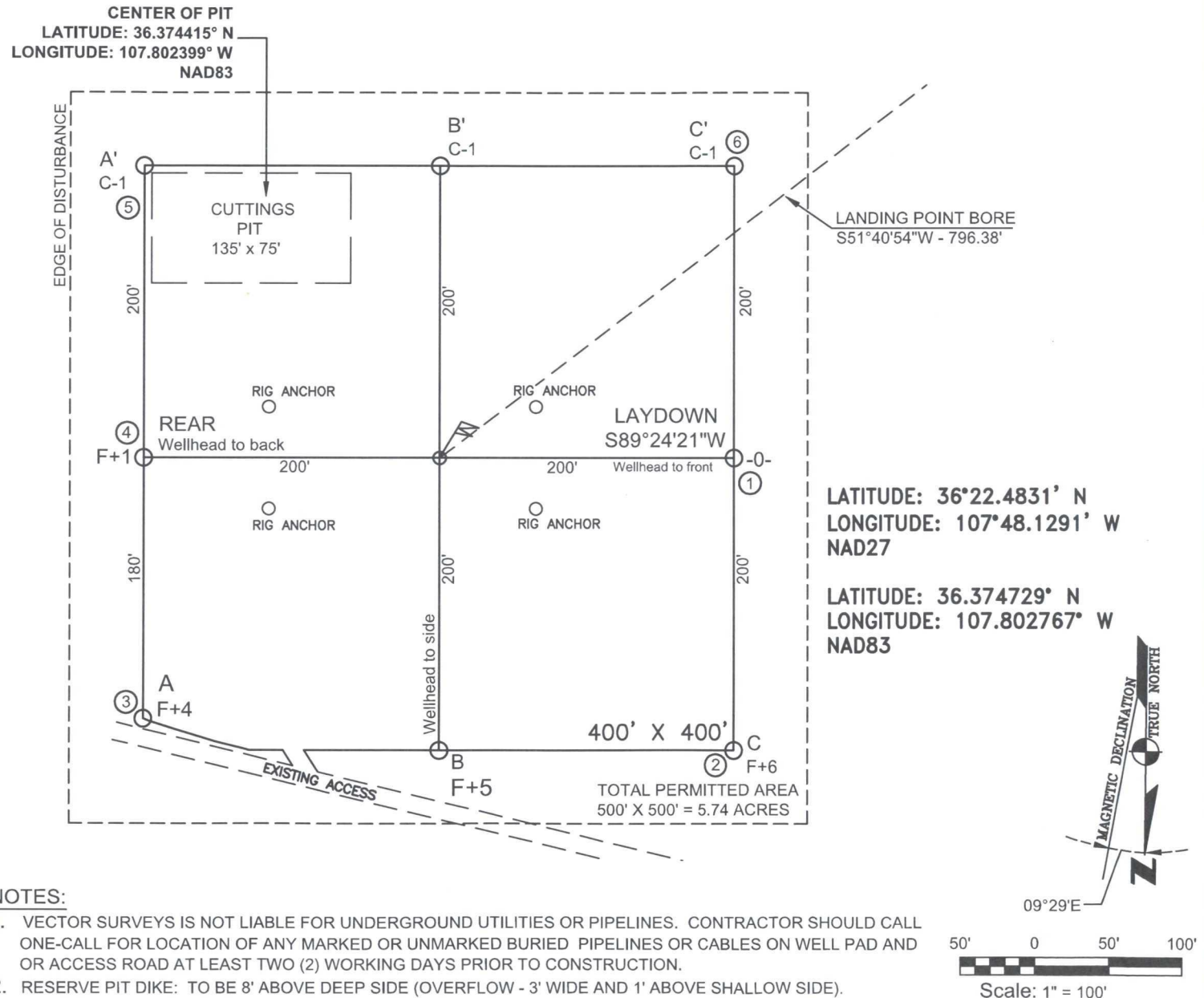
BASIS OF BEARING:

BETWEEN FOUND MONUMENTS AT THE NORTHEAST CORNER AND THE EAST QUARTER CORNER OF SECTION 29, TOWNSHIP 25 NORTH, RANGE 9 WEST, N.M.P.M. SAN JUAN COUNTY, NEW MEXICO.

LINE BEARS: S 00°35'56" E A DISTANCE OF 2671.98 FEET AS MEASURED BY G.P.S. LOCAL GRID NAD83.

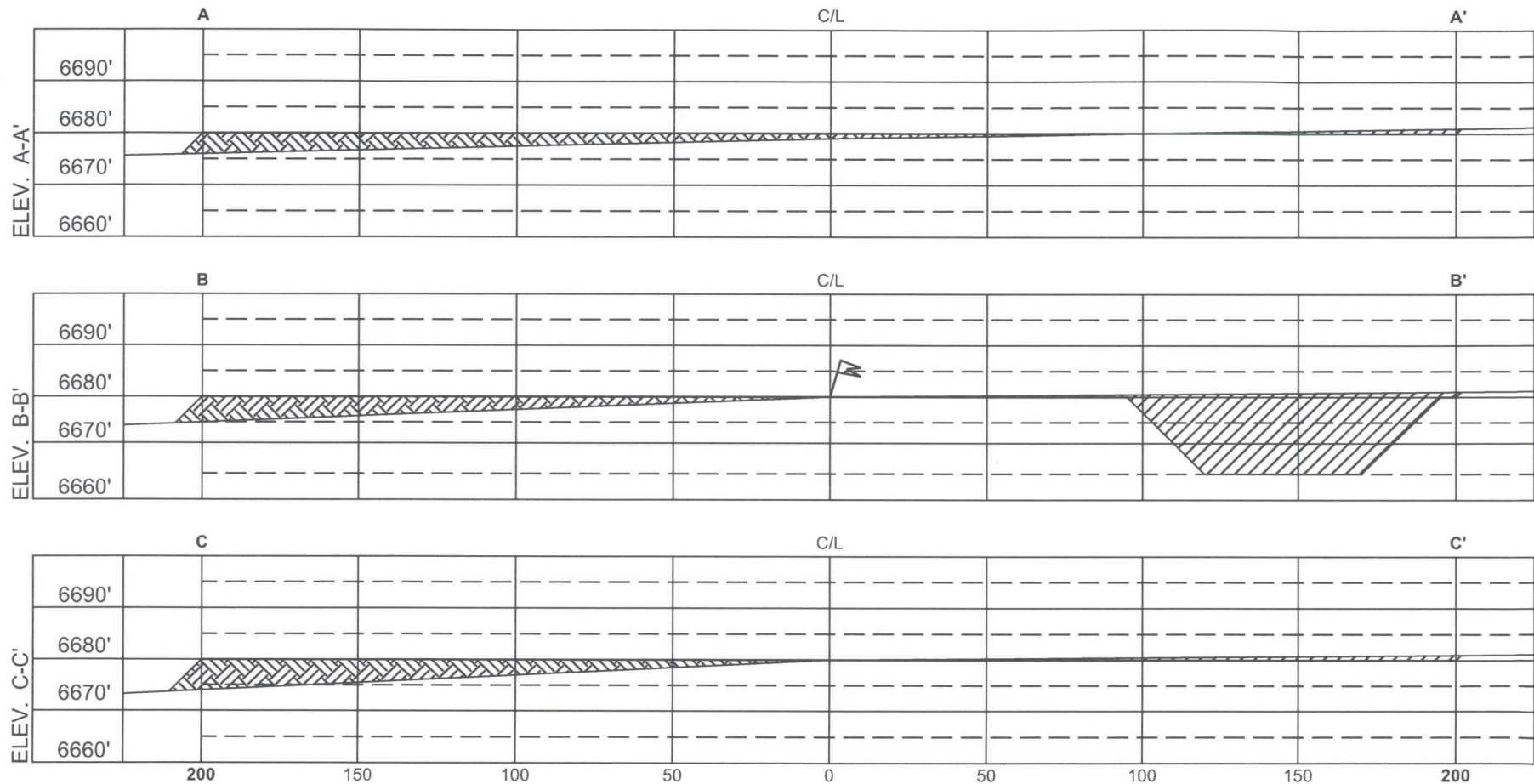


BRANNON FEDERAL #292H, 1824' FNL & 300' FWL
SECTION 28, T-25-N, R-9-W, NMPM, SAN JUAN COUNTY, NM
GROUND ELEVATION: 6680', DATE: AUGUST 11, 2014



LOGOS OPERATING, LLC

BRANNON FEDERAL #292H, 1824' FNL & 300' FWL
SECTION 28, T-25-N, R-9-W, NMPPM, SAN JUAN COUNTY, NM
GROUND ELEVATION: 6680', DATE: AUGUST 11, 2014



HORIZ. SCALE: 1" = 50'
VERT. SCALE: 1" = 30'

NOTE:

VECTOR SURVEYS IS NOT LIABLE FOR UNDERGROUND UTILITIES OR PIPELINES. CONTRACTOR SHOULD CALL ONE-CALL FOR LOCATION OF ANY MARKED OR UNMARKED BURIED PIPELINES OR CABLES ON WELL PAD AND OR ACCESS ROAD AT LEAST TWO (2) WORKING DAYS PRIOR TO CONSTRUCTION.



New Mexico Office of the State Engineer

Water Column/Average Depth to Water

(A CLW##### in the
POD suffix indicates the
POD has been replaced
& no longer serves a
water right file.)

(R=POD has
been replaced,
O=orphaned,
C=the file is
closed)

(quarters are 1=NW 2=NE 3=SW 4=SE)

(quarters are smallest to largest)

(NAD83 UTM in meters)

(In feet)

POD Number	POD Sub-Code	basin	County	Q 64	Q 16	Q 4	Sec	Tws	Rng	X	Y	Distance	Depth Well	Depth Water	Water Column
SJ 01979			SJ	3	2	32	25N	09W		247838	4027524	1787	1180	628	552
SJ 01255			SJ	1	1	07	24N	09W		245350	4024741*	5484	1100	1073	27
SJ 01715			SJ	4	4	22	25N	10W		241895	4030074*	6843	637	250	387
RG 36933 POD1	MRG	CA		2	2	3	11	25N	10W	242903	4033769*	7415	180	60	120

Average Depth to Water: **502 feet**

Minimum Depth: **60 feet**

Maximum Depth: **1073 feet**

Record Count: 4

UTMNAD83 Radius Search (in meters):

Easting (X): 248670

Northing (Y): 4029107

Radius: 10000

*UTM location was derived from PLSS - see Help

The data is furnished by the NMOSE/ISC and is accepted by the recipient with the expressed understanding that the OSE/ISC make no warranties, expressed or implied, concerning the accuracy, completeness, reliability, usability, or suitability for any particular purpose of the data.

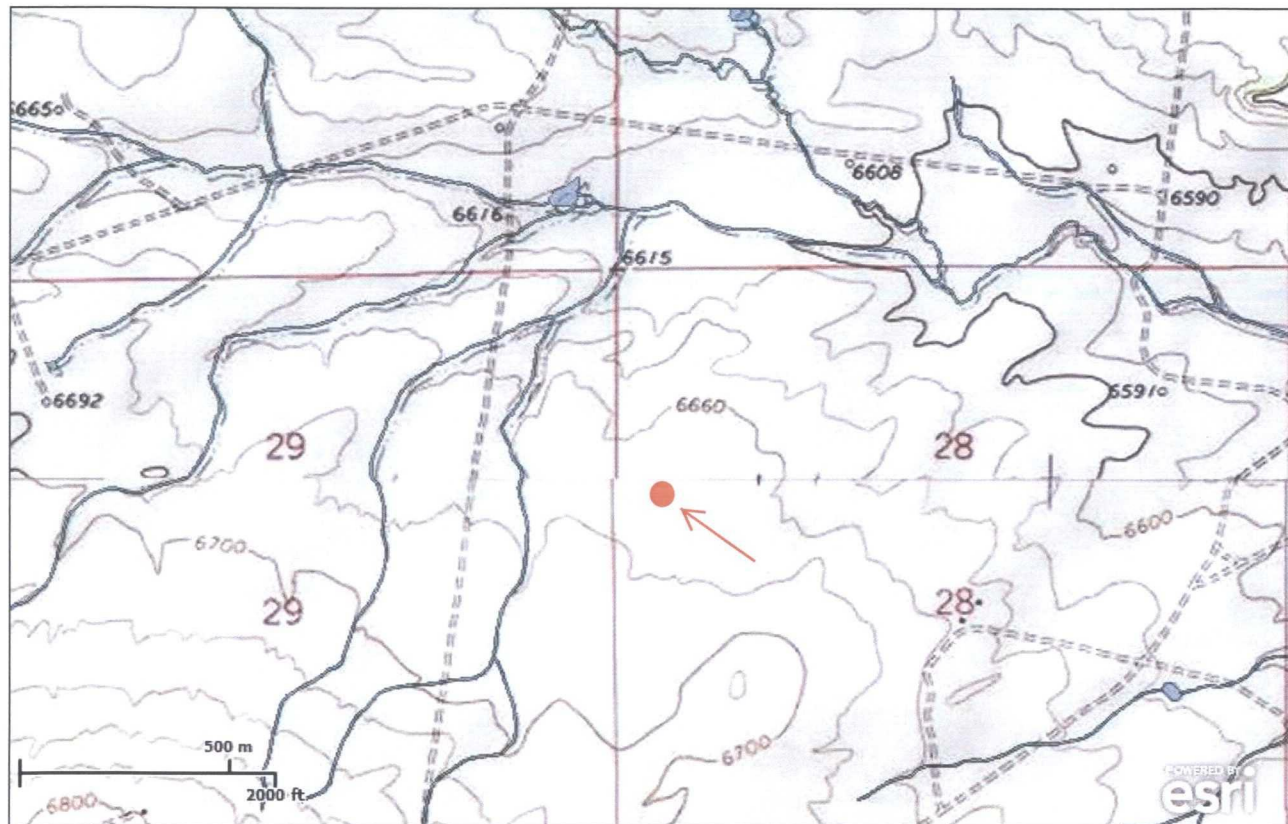


U.S. Fish and Wildlife Service

National Wetlands Inventory

BRANNON
FEDERAL 292H

Feb 19, 2015



Wetlands

- Freshwater Emergent
- Freshwater Forested/Shrub
- Estuarine and Marine Deepwater
- Estuarine and Marine
- Freshwater Pond
- Lake
- Riverine
- Other

Riparian

- Herbaceous
- Forested/Shrub

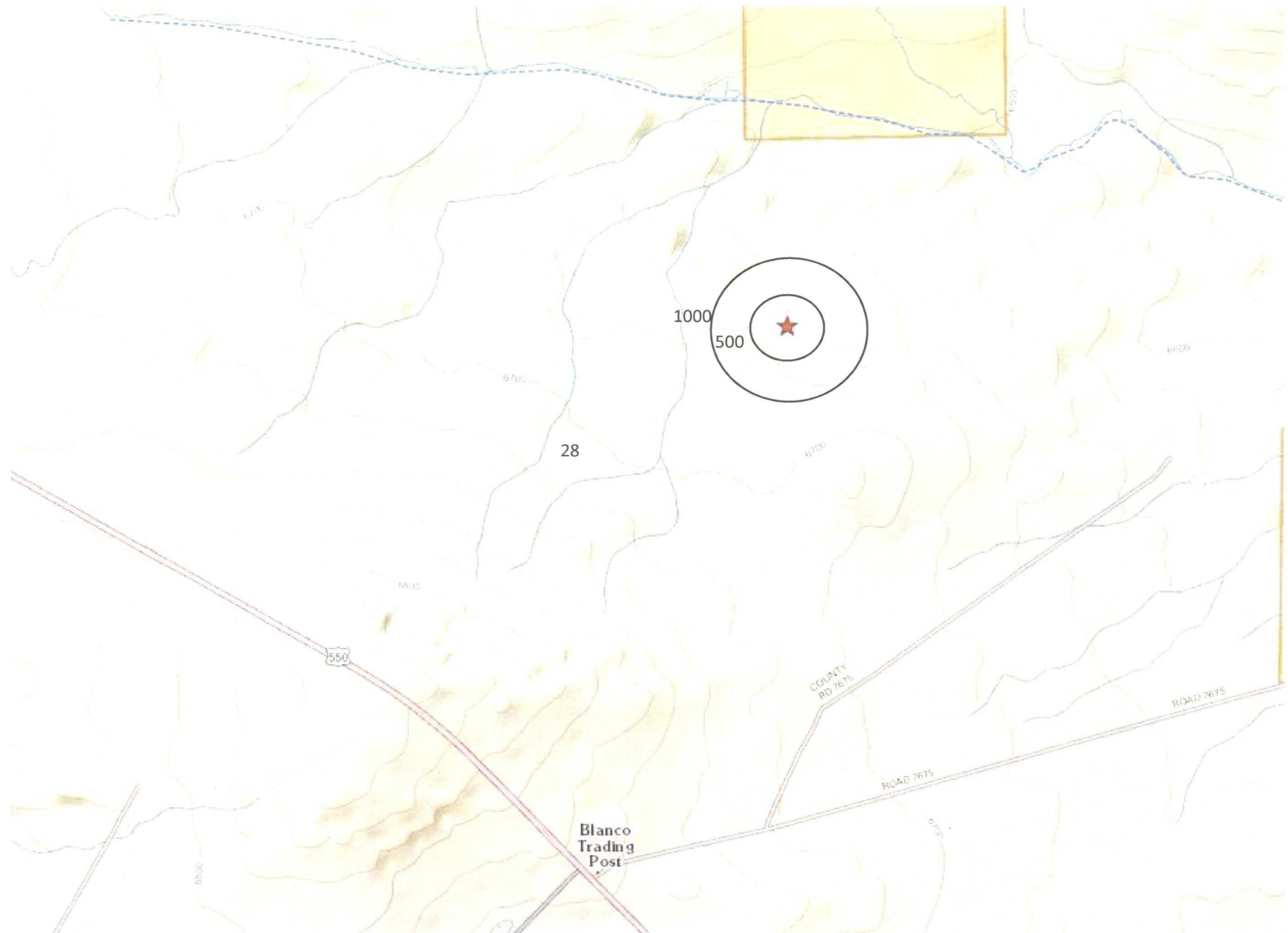
Riparian Status

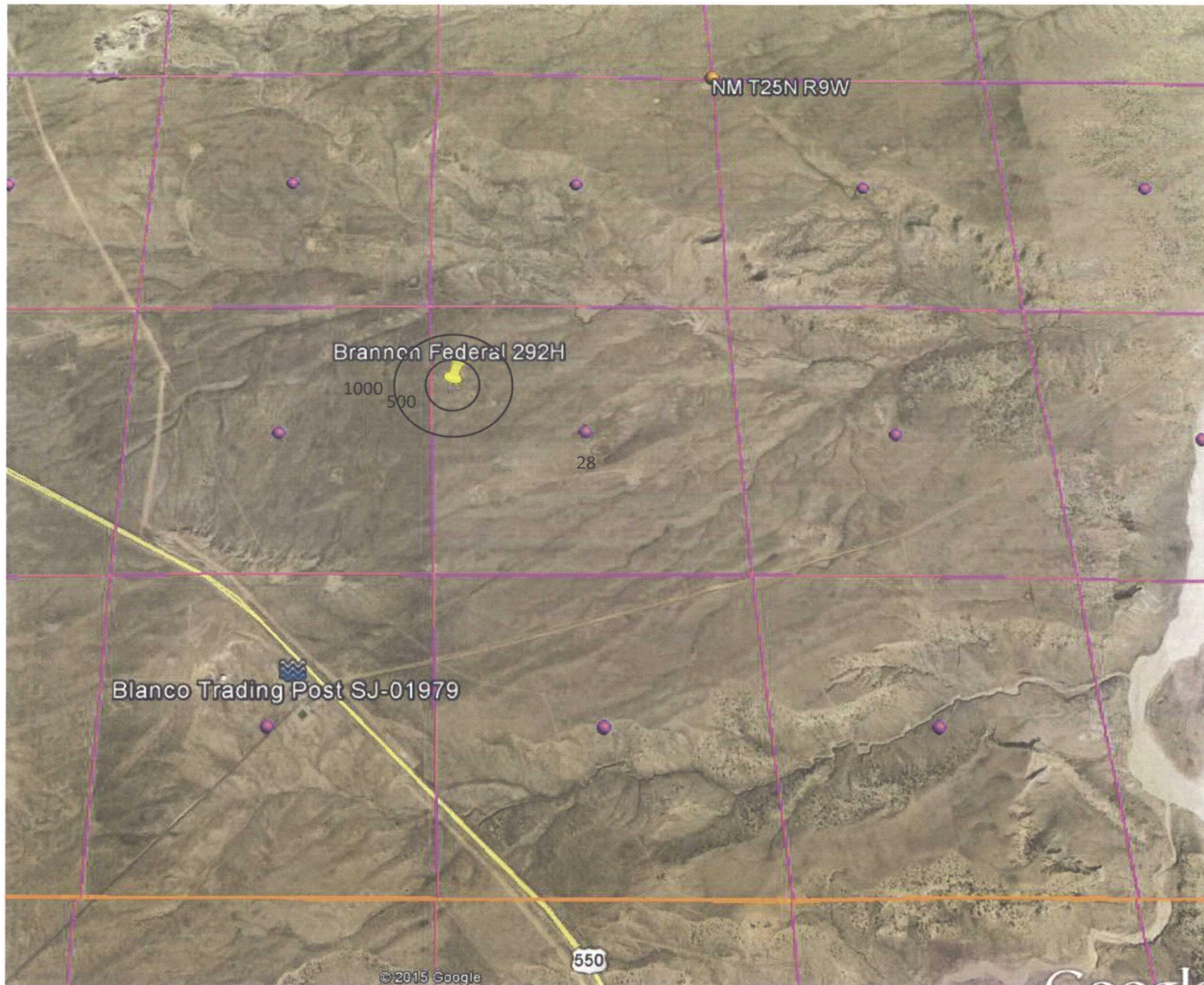
- Digital Data

This map is for general reference only. The US Fish and Wildlife Service is not responsible for the accuracy or currentness of the base data shown on this map. All wetlands related data should be used in accordance with the layer metadata found on the Wetlands Mapper web site.

User Remarks:

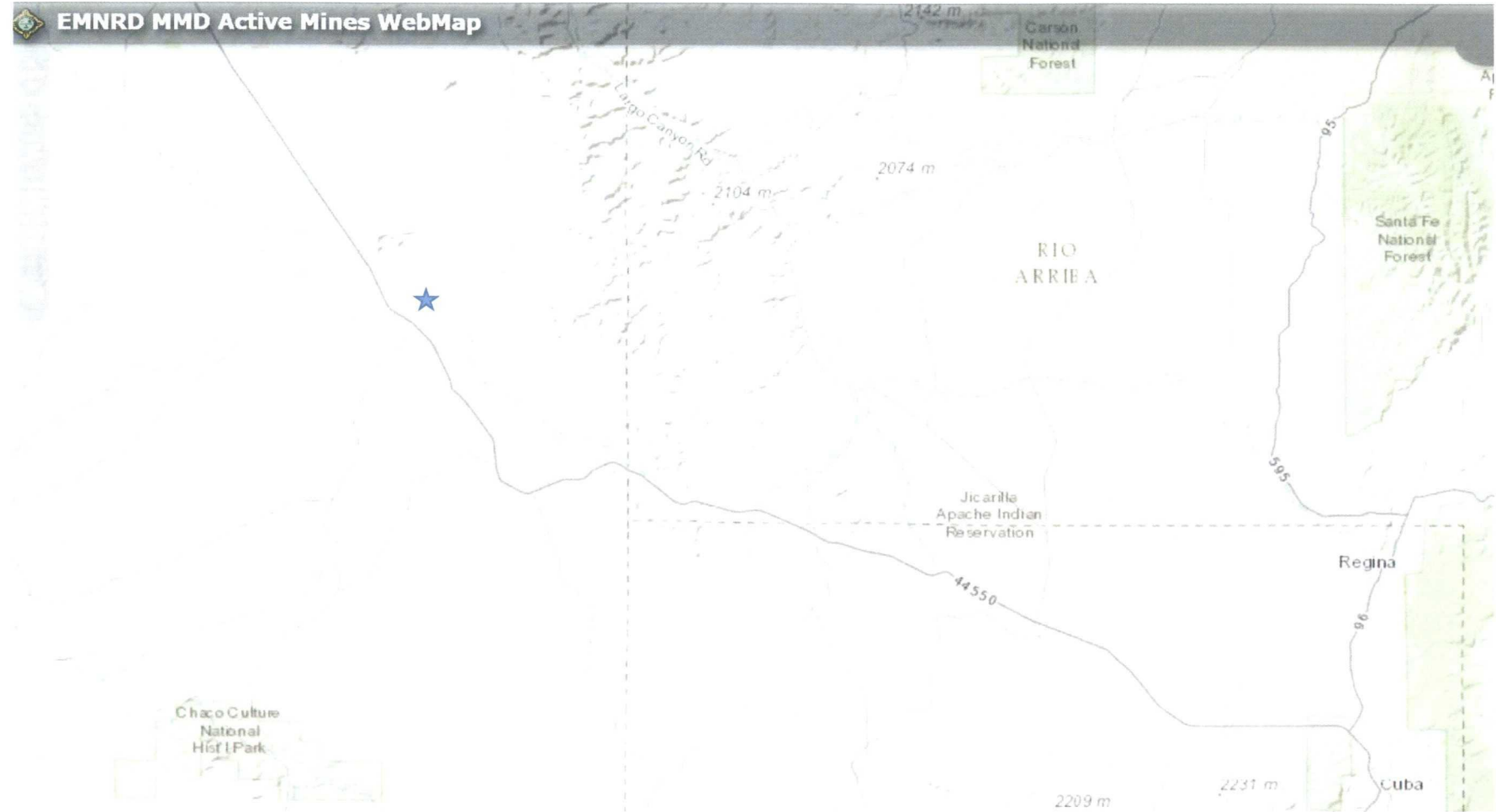
Unit Letter E, Section 28, T25N, R09W-No wetlands within 100' of drill site.





MINES, MILLS & QUARRIES MAP

BRANNON FEDERAL 292H



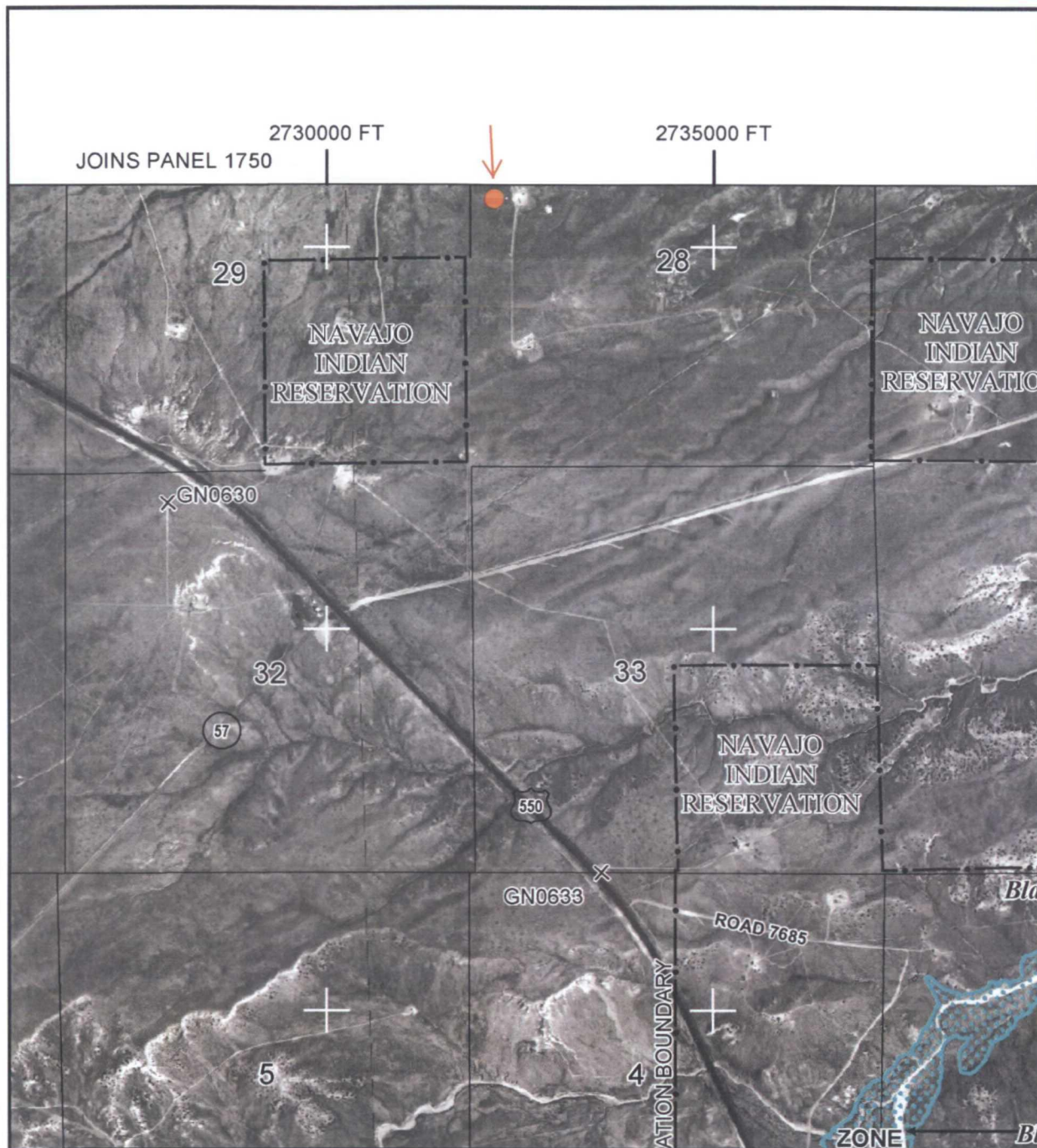
BRANNON FEDERAL 292H - Latitude 36.374415° N / Longitude 107.802399° W (NAD83)

There are no mines, mills or quarries within any close distance.

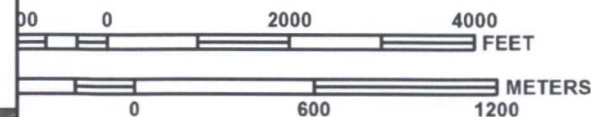
Data Source: New Mexico Active Mines, Feb 2012 spreadsheet

<http://www.emnrd.state.nm.us/MMD/gismapminedata.html>

BRANNON FEDERAL 292H - FEMA MAP - SEC 28, T25N, R09W



MAP SCALE 1" = 2000'



NFIP

NATIONAL FLOOD INSURANCE PROGRAM

PANEL 2075F

FIRM

FLOOD INSURANCE RATE MAP

SAN JUAN COUNTY,
NEW MEXICO
AND INCORPORATED AREAS

PANEL 2075 OF 2750

(SEE MAP INDEX FOR FIRM PANEL LAYOUT)

CONTAINS:

COMMUNITY	NUMBER	PANEL	SUFFIX
SAN JUAN COUNTY	350064	2075	F

Notice to User: The Map Number shown below should be used when placing map orders. The Community Number shown above should be used on insurance applications for the subject community.



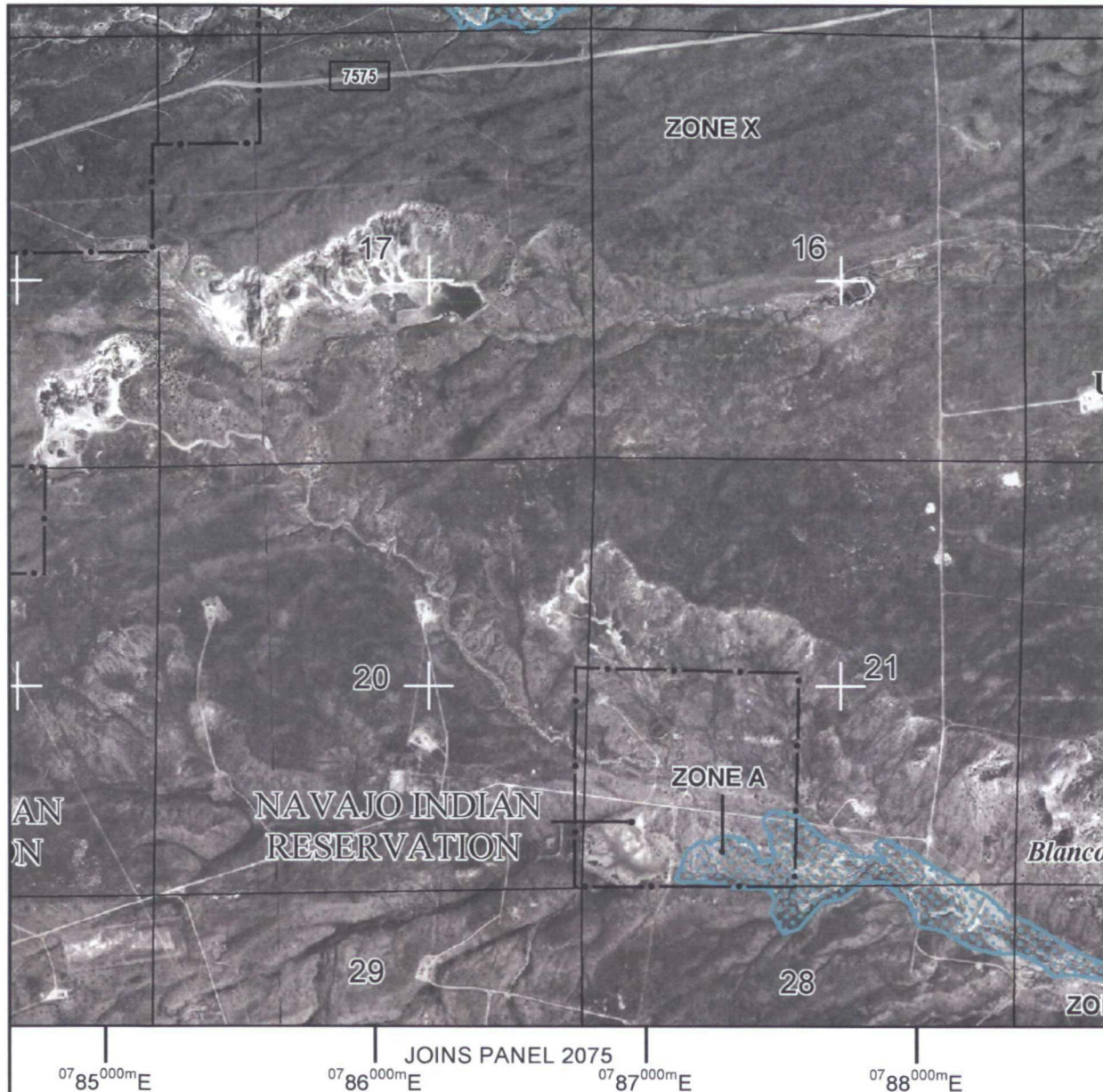
MAP NUMBER
35045C2075F

EFFECTIVE DATE
AUGUST 5, 2010

Federal Emergency Management Agency

This is an official copy of a portion of the above referenced flood map. It was extracted using F-MIT On-Line. This map does not reflect changes or amendments which may have been made subsequent to the date on the title block. For the latest product information about National Flood Insurance Program flood maps check the FEMA Flood Map Store at www.msc.fema.gov

BRANNON FEDERAL 292H/304H - FEMA MAP - NORTH 1/2 OF SEC 28 & 29, T25N, R09W



MAP SCALE 1" = 2000'

0 2000 4000
FEET

0 600 1200
METERS

NFIP

NATIONAL FLOOD INSURANCE PROGRAM

PANEL 1750F

FIRM

FLOOD INSURANCE RATE MAP

SAN JUAN COUNTY,
NEW MEXICO
AND INCORPORATED AREAS

PANEL 1750 OF 2750

(SEE MAP INDEX FOR FIRM PANEL LAYOUT)

CONTAINS:

COMMUNITY	NUMBER	PANEL	SUFFIX
SAN JUAN COUNTY	350064	1750	F

Notice to User: The Map Number shown below should be used when placing map orders, the Community Number shown above should be used on insurance applications for the subject community.



MAP NUMBER
35045C1750F

EFFECTIVE DATE
AUGUST 5, 2010

Federal Emergency Management Agency

This is an official copy of a portion of the above referenced flood map. It was extracted using F-MIT On-Line. This map does not reflect changes or amendments which may have been made subsequent to the date on the title block. For the latest product information about National Flood Insurance Program flood maps check the FEMA Flood Map Store at www.msc.fema.gov

Hydro geological report for Brannon Federal 292H

Referenced Well Location:

The Brannon Federal 292H is located on federal land in San Juan County, New Mexico. The proposed project area is located north of U.S. Highway 550 and is within level to gently rolling terrain characterized by sagebrush shrub-lands intermixed with badlands and erosional drainages and Harris Mesa to the west. The area contains a long, sinuous wash surrounded by low hills and benches. Ground elevation at the proposed well head is approximately 6680 feet.

General Regional Groundwater Description: As a portion of the San Juan Basin, the FFO region is underlain by sandstone aquifers of the Colorado Plateau. The primary aquifer of potential concern at this location is the Uinta-Animas Aquifer, composed primarily of Lower Tertiary rocks in the San Juan Basin. The aquifer consists of the San Jose Formation; the underlying Animas formation and its lateral equivalent, the Nacimiento formation; and the Ojo Alamo Sandstone. The thickness of the Uinta-Animas aquifer generally increases toward the central part of the basin. In this region, the maximum thickness of the aquifer is approximately 3500 feet (USGS, 2001). This aquifer contains fresh to moderately saline water. Groundwater generally flows toward the San Juan River and its tributaries, where it becomes alluvial groundwater or is discharged to stream flow.

Site Specific Information:

Surface Hydrology: The temporary pit area is situated south of Harris Mesa and generally drains southwest into a complex of unnamed, intermittent/ephemeral watercourses that are tributary to Blanco Wash drainage.

1st Water Bearing Formation: San Jose, Tertiary; Formation Thickness: Approximately 200 - 700 ft.

Underlying Formation: Nacimiento, Tertiary

Depth to Groundwater:

Depth to groundwater is estimated at greater than 100' below bottom of temporary pit.

Logos Operating, LLC
Brannon Federal 292H
Temporary Reserve Pit Application
Siting Criteria

1. According to the iWaters Database from the State Engineers Office, the closest known water well is 1787 meters (1.1miles) away in Section 32 of T25N R9W. The depth of the well is 1180 feet and depth to ground water is 628 feet. POD number for the water well is SJ01979 and elevation is approximately 6781'. The Brannon Federal 292H elevation is 6680', so ground water depth is 527', therefore ground water depth to bottom of pit is greater than 100'.
2. As shown on the attached topographic map and aerial photos, there are no continuously flowing watercourses within 100' of the temporary pit, or any significant watercourses, lakebeds, sinkholes or playa lakes within 200' of the temporary pit.
3. There are no permanent residences, schools, hospitals, institutions, or churches within 300' of the temporary pit.
4. There are no domestic water wells or springs within 200' of the temporary pit. See iWaters Database printout.
5. The temporary pit is not located within any municipal boundaries.
6. The temporary pit is not within 100' of any wetlands. See attached topographic map and aerial photos.
7. There are no subsurface mines in Section 28, T25N, R9W. See attached map from the NM EMNRD Mining and Mineral Division.
8. The temporary pit is not located in an "unstable" area. The location is not over a mine and is not on the side of a hill. The location of the excavated pit material will not be located within 100' of a continuously flowing watercourse or 200' from any other watercourse. The stockpile will be on location and will meet the criteria.
9. The attached FEMA Map indicates that the proposed location is well outside 100 year floodplain.
10. In the event that the composite pit sample that is mixed 3:1 with native soils does not meet the requirements for onsite burial, the pit contents will be removed and disposed of at the Envirotech Land Farm #2 (NMOCD Permit #11).

**Logos Operating, LLC
San Juan Basin
Temporary Pit Design and Construction Plan**

In accordance with Rule 19 15 17 the following information describes the design and construction for temporary pits on Logos Operating, LLC (Logos) locations; this is Logos standard procedure for all temporary pits. A separate plan will be submitted for any temporary pit that does not conform to this plan.

General Plan

- 1 Logos will design and construct a temporary pit to contain liquids and solids and prevent contamination of fresh water and protect public health and environment
- 2 Prior to constructing the pit, topsoil will be stockpiled in the construction zone for later use in restoration
- 3 Logos will post a well sign, in compliance with 19.15.17.11C on the well site prior to construction of the temporary pit. The sign will list the operator on record as the operator, the location of the well by unit letter, section, township range, and emergency telephone numbers
- 4 Logos shall construct all new fences utilizing 48' steel mesh field-fence (hogwire) on the bottom with a single strand of barbed wire on top. T-posts shall be installed every 12 feet and corners shall be anchored utilizing a secondary T-post. If the temporary pit is within 1000' of an occupied residence, it will be enclosed with a chain link fence, at least six feet in height with at least two strands of barbed wire at the top. Temporary pits will be fenced at all times excluding drilling or overwork operations, when the front side of the fence will be temporarily removed for operational purposes
- 5 Logos shall construct the temporary pit so that the foundation and interior slopes are firm and free of rocks, debris, sharp edges or irregularities to prevent liner failure
- 6 Logos shall construct the pit so that the slopes are no steeper than two horizontal feet to 1 vertical foot
- 7 Pit walls will be walked down by a crawler type tractor following construction
- 8 All temporary pits will be lined with a 20-mil, string reinforced, LLDPE liner, complying with EPA SW-846 method 9090A requirements
- 9 Geotextile will be installed beneath the liner when rocks, debris, sharp edges or irregularities cannot be avoided
- 10 All liners will be anchored in the bottom of a compacted earth-filled trench at least 18 inches deep
- 11 Logos will minimize liner seams and orient them up and down, not across a slope. Factory seams will be used whenever possible. Logos will ensure all field seams are welded by qualified personnel. Field seams will be overlapped four to six inches and will be oriented parallel to the line of maximum slope. Logos will minimize the number of field seams in corners and irregularly shaped areas
- 12 The liner shall be protected from any fluid force or mechanical damage through the use of mud pit slides, or a manifold system
- 13 The pit shall be protected from run-on by constructing and maintaining diversion ditched around the location or around the perimeter of the pit in some cases
- 14 The volume of the pit shall not exceed 10 acre-feet, including freeboard
- 15 Temporary blow pits will be constructed to allow gravity flow to discharge into lined drill pit
- 16 The lower half of the blow pit (nearest lined pit) will be lined with the same 20 mil liner. The upper half of the blow pit will remain unlined as allowed in Rule 19 15 17 11 F 11
- 17 Logos will not allow freestanding liquids to remain on the unlined portion of temporary blow pit

**Logos Operating, LLC
San Juan Basin
Temporary Pit Maintenance and Operating Plan**

In accordance with Rule 19 15 17 the following information described the operation and maintenance of temporary pits on Logos Operating, LLC (Logos) locations. This is Logos standard procedure for all temporary pits. A separate plan will be submitted for any temporary pit that does not conform to this plan.

General Plan

- 1 Logos will operate and maintain a temporary pit to contain liquids and solids and prevent contamination of fresh water and protect public health and environment
- 2 Logos will conserve drilling fluids by transferring liquids to pits ahead of the rigs whenever possible. All other drilling fluids will be disposed at Basin Disposal, Inc. Permit # NM-01-005
- 3 Logos will not discharge or store any hazardous waste in any temporary pit
- 4 If any pit liner's integrity is compromised or if any penetration of the liner occurs above the liquid's surface, then Logos shall notify the Aztec Division office by phone or email within 48 hours of the discovery and repair the damage or replace the liner
- 5 If a leak develops below the liquid's level, Logos shall remove all liquids above the damaged liner within 48 hours and repair the damage or replace the liner. Logos shall notify the Aztec Division office by phone or email within 48 hours of the discovery pursuant to 19.15.29 NMAC.
- 6 The liner shall be protected from any fluid force or mechanical damage through the use of mud pit slides, or manifold system
- 7 The pit shall be protected from run-on by constructing and maintaining diversion ditches around the location or around the perimeter of the pit in some cases
- 8 Logos shall immediately remove any visible layer or oil from the surface of temporary pit after cessation of a drilling or workover operation. Oil absorbent booms will be utilized to contain and remove oil from the pit's surface. An oil absorbent boom will be stored on-site until closure of pit
- 9 Only fluids generated during the drilling or workover process may be discharged into a temporary pit
- 10 Logos will maintain the temporary pit free of miscellaneous solid waste or debris
- 11 During drilling or workover operations, Logos will inspect the temporary pit at least once daily to ensure compliance with this plan. Inspections will be logged in the IADC reports. Logos will file this log with the Aztec Division office upon closure of the pit
- 12 After drilling or workover operations, Logos will inspect the temporary pit weekly so long as liquids remain in the temporary pit. A log of the inspections will be stored at Logos office electronically and will be filed with the Aztec Division office upon closure of the pit
- 13 Logos shall maintain at least two feet of freeboard for a temporary pit
- 14 Logos shall remove all free liquids from a temporary pit within 60 days from the date the operator releases the drilling or workover rig
- 15 Logos shall remove all free liquids from cavitations put within 48 hours after completing cavitations. Logos g may request additional time to remove liquids from Aztec Division office if it is not feasible to remove liquids within 48 hours

**Logos Operating, LLC
San Juan Basin
Temporary Pit Closure Plan**

In accordance with Rule 19.15.17.13 NMAC the following information describes the closure requirements of temporary pits on Logos Operating, LLC (Logos) locations. This is Logos standard procedure for all temporary pits. A Separate plan will be submitted for any temporary pit that does not conform to this plan.

All closure activities will include proper documentation and be available for review upon request and will be submitted to OCD within 60 days of the pit closure. Closure report will be filed on C-144 and incorporated the following:

- Detail on Capping and Covering, where applicable
- Plot Plan (Pit diagram)
- Inspection reports
- Sampling Results
- C-105
- Copy of Deed Notice will be filed with County Clerk

General Plan

- 1 All free standing liquids will be removed at the start of the pit closure process from the pit and disposed of in a division-approved facility or recycle, reuse or reclaim the liquids in a manner that the appropriate division district office approves
- 2 The preferred method of closure for all temporary pits will be on-site burial, assuming that all criteria listed in sub-section (D) of 19.15.17.13 are met
- 3 Logos will notify the surface owner by certified mail, return receipt requested, unless surface owner is a public entity (BLM/State/Tribal) then an email notification will be sent, of plans to close the temporary pit at least 72 hours, but no more than 1 week, prior to any closure operation. The notice will include the well name, API number, and location
- 4 Within 6 months of the Rig Off status occurring on the continuous drilling of dual pad wells, Logos will ensure that temporary pits are closed, re-contoured, and reseeded
- 5 Notice of Closure will be given to the Aztec Division office between 72 hours and one week of closure via email, or verbally, The notification of closure will include the following:
 - i. Operator's name
 - ii. Well name and API Number
 - iii. Location by Unit Letter, Section, Township, and Range.
- 6 Pit contents shall be mixed with non-waste containing, earthen material in order to achieve the solidification process. The solidification process will be accomplished using a combination of natural drying and mechanically mixing. Pit contents will be mixed with non-waste, earthen material to a consistency that is deemed as safe and stable. The mixing ratio shall not exceed 3 parts clean soil to 1 part pit contents
- 7 A five point composite sample will be taken of the pit using sampling tools and all samples tested per 19.15.17.13 (D)(5). In the event that the criteria are not met, all contents will be handled per 19.15.17.13 (D)(7) i.e., Dig and haul

Components	Tests Method	Limit (mg/Kg)
		>100' bottom of pit to GW
Benzene	EPA SW-846 8021B or 8015M	10
BTEX	EPA SW-846 8021B or 8260B	50
TPH	EPA SW-846 418.1	2500
GRO/DRO	EPA SW-846 8015M	1000
Chlorides	EPA 300.0	80,000

- 8 Upon completion of solidification and testing; and contents are below concentrations listed in TABLE II, Logos will fold the outer edges of the trench liner to overlap the waste material in the pit area, then install a geomembrane cover over the waste material in the pit to prevent collections of infiltration water after the soil cover is in place; geomembrane a 20-mil, string reinforced, LLDPE liner, or equivalent complying with EPA SW-846 method 9090A requirements and impervious resistance to ultra violet light, hydrocarbons, salts, alkaline.
- 9 Pit area will be backfilled with compacted, non-waste containing, earthen material with chloride concentrations less than 600 mg/kg as analyzed by EPA Method 300.0. A minimum of four feet of cover shall be achieved and the cover shall include one foot of suitable material to establish vegetation at the site, or the background thickness of topsoil, whichever is greater
- 10 Re-contouring of location will match fit, shape, line, form and texture of the surrounding area. Re-shaping will include drainage control, prevent ponding, and prevent erosion. Natural drainages will be unimpeded and water bars and/or silt traps will be placed in areas where needed to prevent erosion on a large scale. Final re-contour shall have a uniform appearance with smooth surface, fitting the natural landscape
- 11 Notification will be sent to OCD when the reclaimed area is seeded
- 12 Logos shall seed the disturbed areas the first favorable growing season after the operator closes the pit. Seeding will be accomplished via drilling on the contour whenever practical or by other division-approved methods. BLM or Forest Service stipulated seed mix will be used on federal lands. Vegetative cover will be established that will reflect a life-form ratio of plus or minus fifty percent (50%) of pre-disturbance levels and will equal seventy (70%) of the native perennial vegetative cover (un-impacted) consisting of at least three native plant species, including at least one grass, but not including noxious weeds, and maintain that cover thorough two successive growing seasons. Repeat seeding or planting will be continued until successful vegetative growth occurs
 - a. On Federal/Tribal/Forest lands we will comply with their stipulations as they are more stringent
- 13 The temporary pit will be located with a steel marker, no less than four inches in diameter, cemented in a hole three feet deep in the center of the onsite burial upon the abandonment of all the wells on the pad. The marker will be a four foot tall riser with the operator's information at the time of all wells on the pad are abandoned. The operator's information will include the following: Operator Name, Lease Name, Well Name and Number, unit Number, Section, Township, Range and an indicator that the marker is an onsite burial location
 - a. If the well goes into production, then an alternate interim marking system will be used to allow for safer and more efficient operations. A minimum 4" O.D. steel pipe will be set at least 36" deep at the center of the pit. A threaded collar will be on the top of the pipe. A minimum 12" x 12" steel plate will be welded atop the threaded collar. Top of the plate will be flush with ground level. The steel plate will contain the Operator Name, Lease Name, Well Number, and location information including unit letter, section, township and range, and that the marker designates an onsite burial location. This information will be welded, stamped or otherwise permanently engraved into the metal of the plate. Upon the abandonment of all the wells on the pad, the plate will be removed and replaced with a four foot tall riser containing the same information as described for the steel plate pursuant to 19.15.17.13.H.5D.