

AUG 06 2015

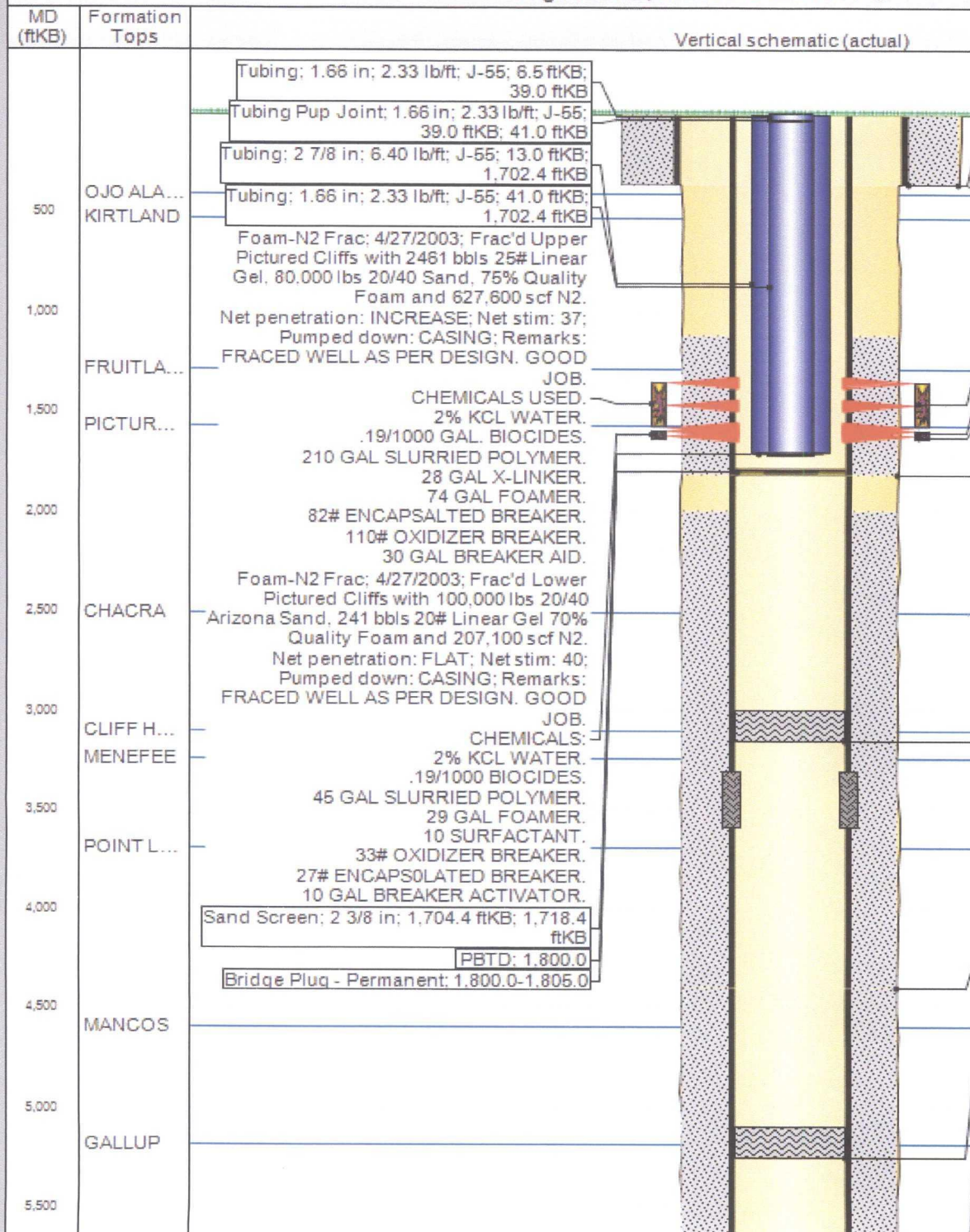


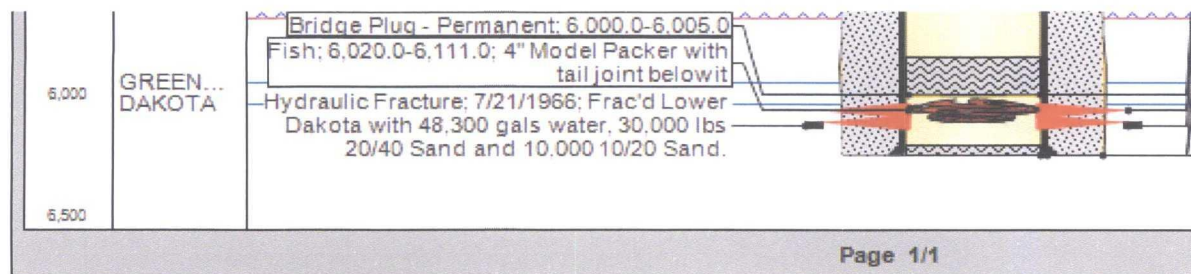
Well Name: RHODES T L B #1

Current Schematic

API / UWI 3004511777	Surface Legal Location NMPM.020-028N-011W	Field Name AZTEC FRUITLAND SAND (GAS)	License No.	State/Province NEW MEXIC
Ground Elevation (ft) 6,674.00	Original KB RT Elevation (ft) 6,686.00	KB-Ground Distance (ft) 12.00	KB-Casing Flange Distance	

Original Hole, 6/16/2015 3:54:14 PM





Well Configuration Type	
O	
(ft)	KB-Tubing Hanger Distance (ft)
5,686.00	5,686.00

1; Surface; 8 5/8 in; 8.097 in; 12.0 ftKB;
 Reports are unclear, there are no pipe
 tallies. Casing information is estimated.
 Number of Joints determined using an
 estimated 31.5' per joint.; 359.0 ftKB
 Surface Casing Cement: 12.0-359.0;
 6/16/1966; Cemented with 200 sxs Class 'A'
 Cement, circulated to surface.

Fruitland; 1,352.0-1,572.0; 4/26/2003
 Upper Pictured Cliffs; 1,598.0-1,604.0
 4/26/2003
 Lower Pictured Cliffs; 1,625.0-1,635.0
 4/26/2003
 Stage 3; 1,115.0-1,815.0; 7/21/1966;
 Records contain no cement information for
 stage 3 but TOC is estimated @ 1115' -
 CBL 4-24-03.

Cement Plug 3; 2,990.0-3,152.0; Plug 3
 from 2990'- 3152'.

Stage 2; 1,993.0-4,403.0; 7/21/1966;
 Cemented Stage 2 with 550 sxs Class 'C'
 Cement, followed by 50 sxs Class 'C' Neat.
 TOC @ 1993' - 75% Efficiency Calculation.
 Cement Plug 2; 5,090.0-5,247.0; Plug 2
 From 5090'- 5247'.
 Cement Plug 1; 5,843.0-6,000.0; Set
 cement plugs with 12 sxs ASTM Type III
 Cement. Plug 1 From 5843'- 6000'.
 Upper Dakota; 6,061.0-6,072.0; 7/21/1966
 Lower Dakota; 6,113.0-6,142.0; 7/21/1966
 Auto cement plug; 6,211.0-6,248.0;
 7/21/1966; Automatically created cement
 plug from the casing cement because it had
 a tagged depth.
 2; Production 1; 4 1/2 in; 4.052 in; 12.0 ftKB;
 Reports are unclear, there are no pipe

tallies. Casing information is estimated.
Number of Joints determined using an
estimated 31.5' per joint.; 6,248.0 ftKB
Stage 1; 4,403.0-6,248.0; 7/21/1966;
Cemented Stage 1 with 400 sxs Class 'C'
Cement, followed by 100 sxs Class 'C' Neat
TOC @ Stage Tool @ 4403' - 75%
Efficiency Calculation.

Report Printed: 6/16/2015