

Submit 1 Copy To Appropriate District
Office
District I - (575) 393-6161
1625 N. French Dr., Hobbs, NM 88240
District II - (575) 748-1283
811 S. First St., Artesia, NM 88210
District III - (505) 334-6178
1000 Rio Brazos Rd., Aztec, NM 87410
District IV - (505) 476-3460
1220 S. St. Francis Dr., Santa Fe, NM
87505

State of New Mexico
Energy, Minerals and Natural Resources

Form C-103
Revised July 18, 2013

OIL CONSERVATION DIVISION
1220 South St. Francis Dr.
Santa Fe, NM 87505

WELL API NO.
30-045-32316

5. Indicate Type of Lease
STATE ☐ FEE ☒

6. State Oil & Gas Lease No.

7. Lease Name or Unit Agreement Name

Best Gas Com

8. Well Number

1M

9. OGRID Number

000778

10. Pool name or Wildcat

Basin Dakota, Blanco-Mesaverde

SUNDRY NOTICES AND REPORTS ON WELLS

(DO NOT USE THIS FORM FOR PROPOSALS TO DRILL OR TO DEEPEN OR PLUG BACK TO A DIFFERENT RESERVOIR. USE "APPLICATION FOR PERMIT" (FORM C-101) FOR SUCH PROPOSALS.)

1. Type of Well: Oil Well ☐ Gas Well ☒ Other

2. Name of Operator

BP America Production Company

3. Address of Operator

501 Westlake Park Blvd., Three Eldridge Place, 12.181A
Houston, TX 77079

4. Well Location

Unit Letter P: 840 feet from the South line and 1040 feet from the East line
Section 21 Township 32N Range 10W NMPM County San Juan

11. Elevation (Show whether DR, RKB, RT, GR, etc.)
5917'

12. Check Appropriate Box to Indicate Nature of Notice, Report or Other Data

NOTICE OF INTENTION TO:

PERFORM REMEDIAL WORK ☐ PLUG AND ABANDON ☐
TEMPORARILY ABANDON ☐ CHANGE PLANS ☐
PULL OR ALTER CASING ☐ MULTIPLE COMPL ☐
DOWNHOLE COMMINGLE ☐
CLOSED-LOOP SYSTEM ☒
OTHER: Re-Perforate/Fracture Stimulate ☒

SUBSEQUENT REPORT OF:

REMEDIAL WORK ☐ ALTERING CASING ☐
COMMENCE DRILLING OPNS. ☐ P AND A ☐
CASING/CEMENT JOB ☐
OTHER: ☐

13. Describe proposed or completed operations. (Clearly state all pertinent details, and give pertinent dates, including estimated date of starting any proposed work). SEE RULE 19.15.7.14 NMAC. For Multiple Completions: Attach wellbore diagram of proposed completion or recompletion.

BP America Production Company respectfully requests to re-perforate the subject well and hydraulically fracture the Dakota formation.

Please see the attached procedure including wellbore diagrams and C-102 plats.

OIL CONS. DIV DIST. 3

DHC 1513

AUG 10 2015

Spud Date:

09/14/2004

Rig Release Date:

If Perfs are above or below existing Perfs file C104d
I hereby certify that the information above is true and complete to the best of my knowledge and belief.

SIGNATURE Toya Colvin TITLE Regulatory Analyst DATE 08/06/2015

Type or print name Toya Colvin E-mail address: Toya.Colvin@bp.com PHONE: 281-366-7148

For State Use Only

APPROVED BY:

Conditions of Approval (if any):

TITLE

AV

DEPUTY OIL & GAS INSPECTOR
DISTRICT #3

DATE 8/13/2015

Completion
report +
before
returning
to Prod.

Best GC 001M

API # 30-045-32316-00

Location: P SEC. 21, T32N, R10W

San Juan County, New Mexico

Reason/Background for Job

The Best GC 001M is a Mesa Verde & Dakota commingled well that was drilled and completed in 2004. The original stimulation on the Dakota was unsuccessful, and the formation produced large amounts of water; as a result, it was temporarily abandoned in 2007.

It is proposed to reopen, perforate, and hydraulically fracture the Dakota formation, and then install a rod pump. Expected production rates are 365 MCFD, 1 BOPD, and 35 BWPD.

Basic Job Procedure

1. Pull tubing
2. Mill out the CIBP at 5650'
3. Clean out to PBTD of 7682'
4. Perforate the Dakota from 7449' – 7681'
5. Fracture stimulate the Dakota
6. Unset packer(s) and pull tubing
7. Drill out composite plug(s)
8. Clean out to PBTD
9. Run tubing and production BHA
10. Run pump/rods
11. Return well to production

Current WBD
Best GC 001M - MV

Sec 21, T32N, R10W

API # 30-045-32316

GL: 5917'

KB: 5931'

Formation Tops (TVD):

Kirkland/Fruitland	2570'
Picture cliffs	2932'
Cliffhouse	4526'
Menefee	4912'
Pt Lookout	5259'
Mancos	5701'
Dakota	7314'

Mesa Verde Perforations

5097' - 5235' 4 jspf

5266' - 5397' 2 jspf

Frac'd w/ 500 gal 15% HCl, 70Q foam, 86.9k# 16/30 sd

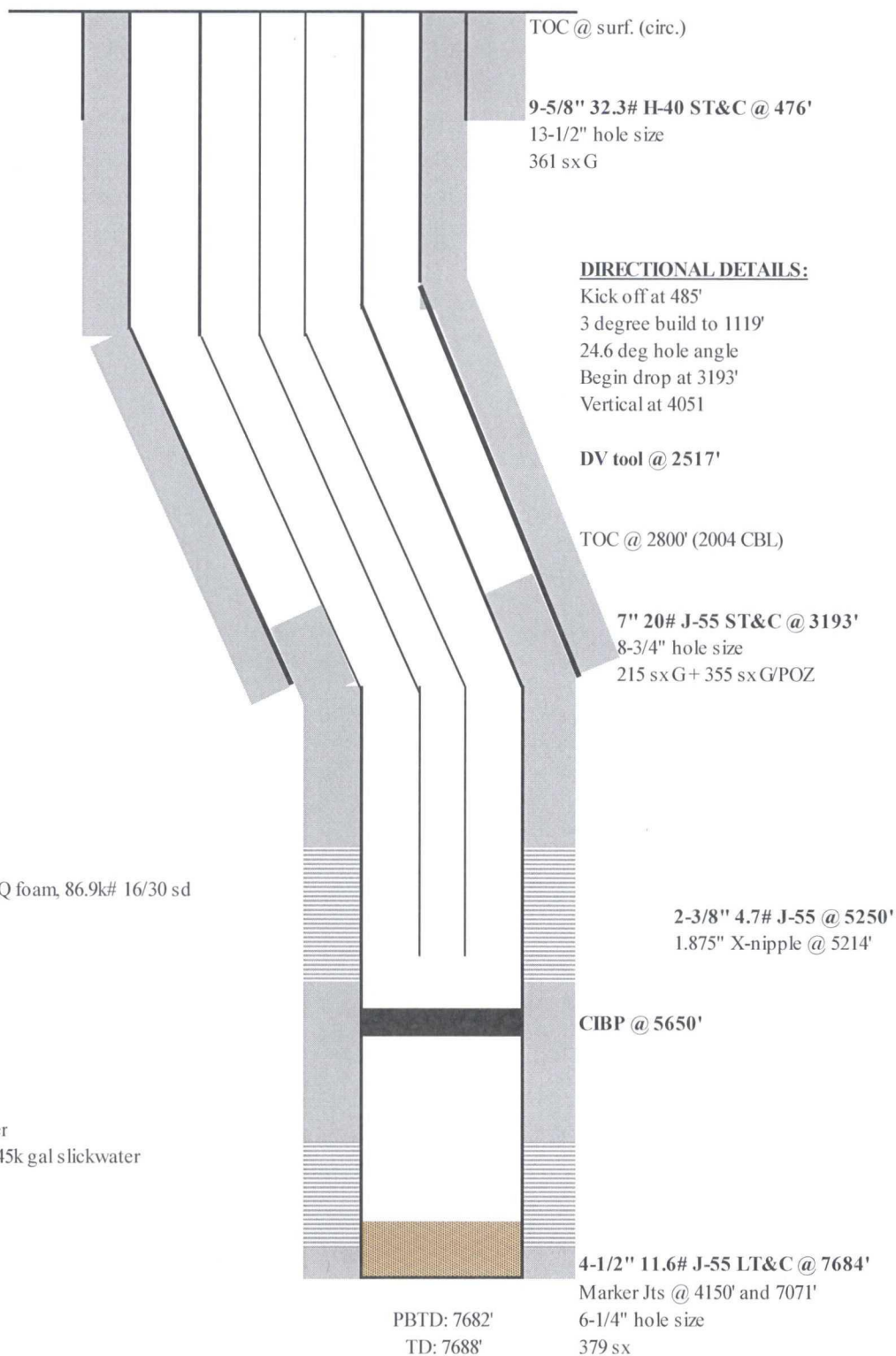
Dakota Perforations

7453' - 7488' 2 jspf

7507' - 7677' 4 jspf

Broken down w/ 2% KCl water

Frac'd w/ 38.6k# 20/40 sd & 145k gal slickwater



Proposed WBD
Best GC 001M - MV/DK

Sec 21, T32N, R10W

API # 30-045-32316

GL: 5917'

KB: 5931'

Formation Tops (TVD):

Kirkland/Fruitland	2570'
Picture cliffs	2932'
Cliffhouse	4526'
Menefee	4912'
Pt Lookout	5259'
Mancos	5701'
Dakota	7314'

Mesa Verde Perforations

5097' - 5235'	4 jspf
5266' - 5397'	2 jspf
Frac'd w/ 500 gal 15% HCl, 70C	

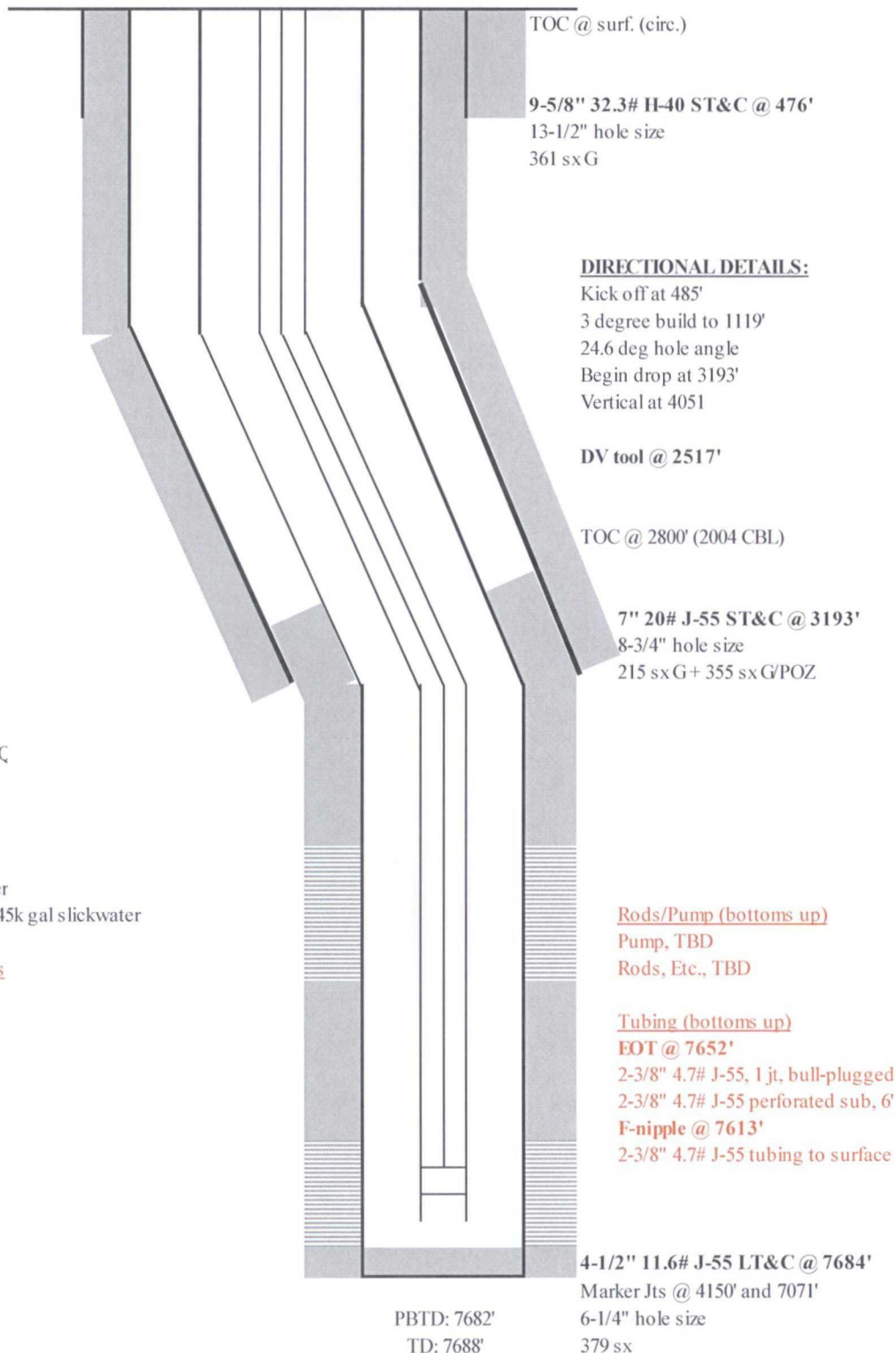
Existing Dakota Perforations

7453' - 7488'	2 jspf
7507' - 7677'	4 jspf
Broken down w/ 2% KCl water	
Frac'd w/ 38.6k# 20/40 sd & 145k gal slickwater	

Proposed Dakota Perforations

7449' - 7489'
7505' - 7514'
Frac'd in stage 2, 2015

7600' - 7606'
7609' - 7621'
7632' - 7635'
7638' - 7641'
7649' - 7681'
Frac'd in stage 1, 2015



District I
1625 N. French Dr., Hobbs, NM 88240
District II
1301 W. Grand Avenue, Artesia, NM 88210
District III
1000 Rio Brazos Rd., Aztec, NM 87410
District IV
1220 S. St. Francis Dr., Santa Fe, NM 87505

State of New Mexico
Energy, Minerals & Natural Resources Department
OIL CONSERVATION DIVISION
1220 South St. Francis Dr.
Santa Fe, NM 87505

Form C-102
Revised July 16, 2010
Submit one copy to appropriate
District Office
☐ AMENDED REPORT

WELL LOCATION AND ACREAGE DEDICATION PLAT

¹ API Number 30-045-32316		² Pool Code 71599		³ Pool Name Basin Dakota	
⁴ Property Code 014113		⁵ Property Name Best Gas Com			⁶ Well Number 1M
⁷ OGRID No. 000778		⁸ Operator Name BP America Production Company			⁹ Elevation 5917

¹⁰ Surface Location

UL or lot no. P	Section 21	Township 32N	Range 10W	Lot Idn	Feet from the 840	North/South line South	Feet from the 1040	East/West line East	County San Juan
--------------------	---------------	-----------------	--------------	---------	----------------------	---------------------------	-----------------------	------------------------	--------------------

¹¹ Bottom Hole Location If Different From Surface

UL or lot no. J	Section 21	Township 32N	Range 10W	Lot Idn	Feet from the 1774	North/South line South	Feet from the 1777	East/West line East	County San Juan
¹² Dedicated Acres 319.64		¹³ Joint or Infill		¹⁴ Consolidation Code		¹⁵ Order No. R-11363			

No allowable will be assigned to this completion until all interests have been consolidated or a non-standard unit has been approved by the division.

¹⁶						<p>¹⁷ OPERATOR CERTIFICATION <i>I hereby certify that the information contained herein is true and complete to the best of my knowledge and belief, and that this organization either owns a working interest or unleased mineral interest in the land including the proposed bottom hole location or has a right to drill this well at this location pursuant to a contract with an owner of such a mineral or working interest, or to a voluntary pooling agreement or a compulsory pooling order heretofore entered by the division.</i></p> <p><i>Toya Colvin</i> 8/06/15 Signature Date</p> <p>Toya Colvin Printed Name</p> <p>Toya.Colvin@bp.com E-mail Address</p> <p>¹⁸ SURVEYOR CERTIFICATION <i>I hereby certify that the well location shown on this plat was plotted from field notes of actual surveys made by me or under my supervision, and that the same is true and correct to the best of my belief.</i></p> <p>Date of Survey Signature and Seal of Professional Surveyor: Previously Filed Certificate Number</p>

Diagram showing well location with dimensions: 1774' (vertical), 1777' (horizontal), 1040' (horizontal), and 840' (vertical). The well is represented by a red dot at the intersection of the 1774' and 1040' lines.

District I
1625 N. French Dr., Hobbs, NM 88240
District II
1301 W. Grand Avenue, Artesia, NM 88210
District III
1000 Rio Brazos Rd., Aztec, NM 87410
District IV
1220 S. St. Francis Dr., Santa Fe, NM 87505

State of New Mexico
Energy, Minerals & Natural Resources Department
OIL CONSERVATION DIVISION
1220 South St. Francis Dr.
Santa Fe, NM 87505

Form C-102
Revised July 16, 2010
Submit one copy to appropriate
District Office
☐ AMENDED REPORT

WELL LOCATION AND ACREAGE DEDICATION PLAT

¹ API Number 30-045-32316	² Pool Code 72319	³ Pool Name Blanco-Mesaverde
⁴ Property Code 014113	⁵ Property Name Best Gas Com	⁶ Well Number 1M
⁷ OGRID No. 000778	⁸ Operator Name BP America Production Company	⁹ Elevation 5917

¹⁰ Surface Location

UL or lot no. P	Section 21	Township 32N	Range 10W	Lot Idn	Feet from the 840	North/South line South	Feet from the 1040	East/West line East	County San Juan
---------------------------	----------------------	------------------------	---------------------	---------	-----------------------------	----------------------------------	------------------------------	-------------------------------	---------------------------

¹¹ Bottom Hole Location If Different From Surface

UL or lot no. J	Section 21	Township 32N	Range 10W	Lot Idn	Feet from the 1774	North/South line South	Feet from the 1777	East/West line East	County San Juan
---------------------------	----------------------	------------------------	---------------------	---------	------------------------------	----------------------------------	------------------------------	-------------------------------	---------------------------

¹² Dedicated Acres 319.64	¹³ Joint or Infill	¹⁴ Consolidation Code	¹⁵ Order No. R-11363
--	-------------------------------	----------------------------------	---

No allowable will be assigned to this completion until all interests have been consolidated or a non-standard unit has been approved by the division.

¹⁶				¹⁷ OPERATOR CERTIFICATION <i>I hereby certify that the information contained herein is true and complete to the best of my knowledge and belief, and that this organization either owns a working interest or unleased mineral interest in the land including the proposed bottom hole location or has a right to drill this well at this location pursuant to a contract with an owner of such a mineral or working interest, or to a voluntary pooling agreement or a compulsory pooling order heretofore entered by the division.</i>  Signature 8/06/15 Date Toya Colvin Printed Name Toya.Colvin@bp.com E-mail Address
				¹⁸ SURVEYOR CERTIFICATION <i>I hereby certify that the well location shown on this plat was plotted from field notes of actual surveys made by me or under my supervision, and that the same is true and correct to the best of my belief.</i> Date of Survey Signature and Seal of Professional Surveyor: Previously Filed Certificate Number

