

CHACO 2308-04D #458H

Nageezi Gallup / Basin Mancos (page 1)

Spud: 1/14/15

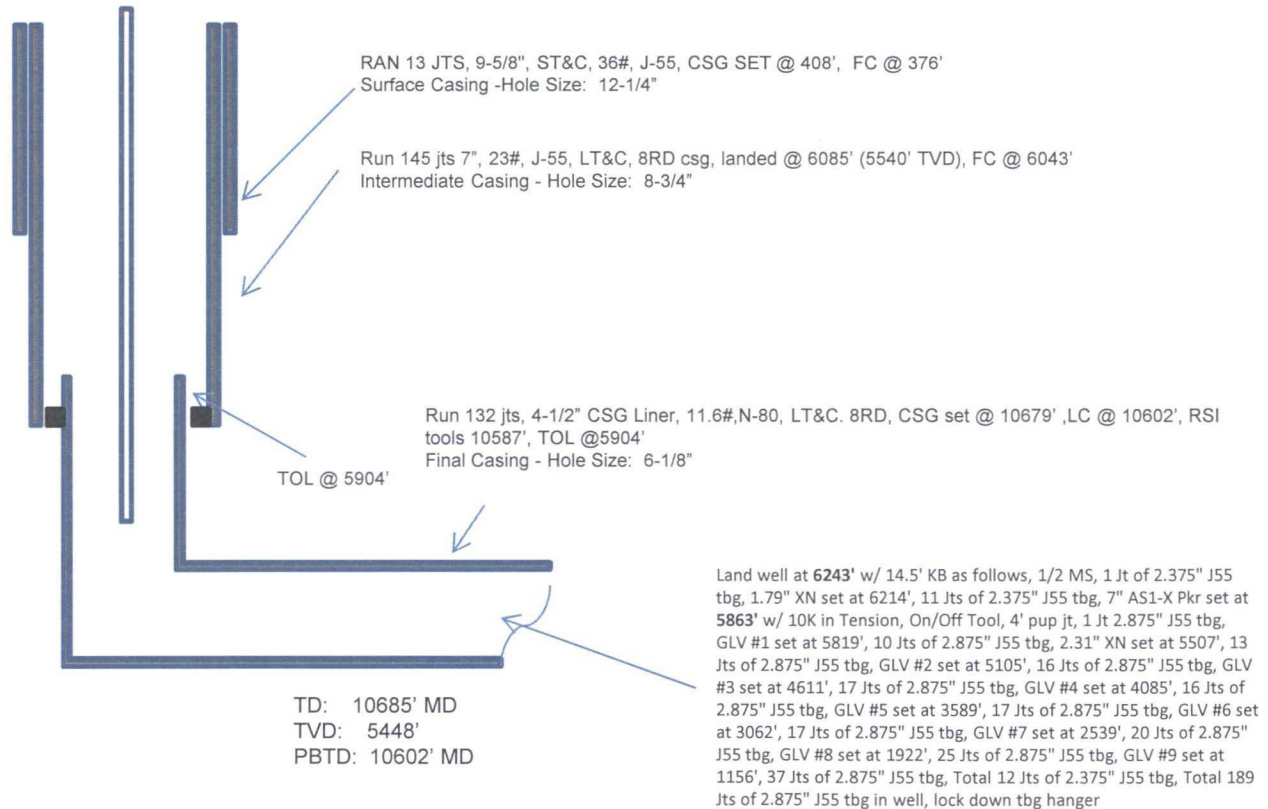
Completed: 4/17/15

SHL: 484' FNL & 755' FWL
NW/4 NW/4 Section 4 (D), T23N, R8W

BHL: 1300' FNL & 247' FWL
NW/4 NW/4 Section 5 (D), T23N, R 8W

SAN JUAN NM
Elevation: 7078
API: 30-045-35615

Tops	MD	TVD
Ojo Alamo:	1163	1159
Kirtland:	1421	1407
Picture Cliffs:	1918	1889
Lewis:	2039	2007
Chacra:	2307	2268
Cliff House:	3428	3355
Menefee:	3486	3411
Point Lookout:	4355	4529
Mancos:	4553	4453
Gallup:	4910	4810



HOLE SIZE	CASING	CEMENT	VOLUME	CMT TOP
12-1/4"	9-5/8"	245 sx	222 cu.ft.	Surface
8-3/4"	7"	1152 sx	1641 cu. ft.	Surface
6-1/8"	4-1/2"	380 sx	523 cu. ft.	TOL 5904'

Lg 4/22/15

OIL CONS. DIV DIST. 3

AUG 19 2015

CHACO 2308-04D #458H

Nageezi Gallup / Basin Mancos (page 1)

(page 2 – lateral with completion)

Mancos 15th:
6140'-6356'- with
24, 0.40" holes.
Frac Gallup 15th
stage with
273,639#, 20/40
PSA Sand

Mancos 13th:
6757'-6943'- with
24, 0.40" holes.
Frac Gallup 13th
stage with
263,023#, 20/40
PSA Sand

Mancos 14th:
6456'-6657'-
with 24, 0.40"
holes. Frac
Gallup 14th
stage with
263,384#, 20/40
PSA Sand

Mancos 12th:
7043'-7229'- with
24, 0.40" holes.
Frac Gallup 12th
stage with 262,858#
20/40 PSA Sand

Mancos 11th:
7326'-7530'- with 24,
0.40" holes. Frac
Gallup 11th stage with
266,002#, 20/40 PSA
Sand

Mancos 10th:
7630'-7816'-
with 24, 0.40"
holes. Frac
Gallup 10th
stage with
217,511#,
20/40 PSA
Sand

Mancos 9th:
7910'-8131'- with
24, 0.40" holes.
Frac Gallup 9th
stage with
216,969#, 20/40
PSA Sand

Gallup 8th:
8232'-8448'- with
24, 0.40" holes.
Frac Gallup 8th
stage with
215,134#, 20/40
PSA Sand

Gallup 7th:
8548'-8764'-
with 24, 0.40"
holes. Frac
Gallup 7th
stage with
215,520# ,
20/40 PSA
Sand

Gallup 6th:
8866'-9073'-
with 24, 0.40"
holes. Frac
Gallup 6th stage
with 215,263# ,
20/40 PSA
Sand

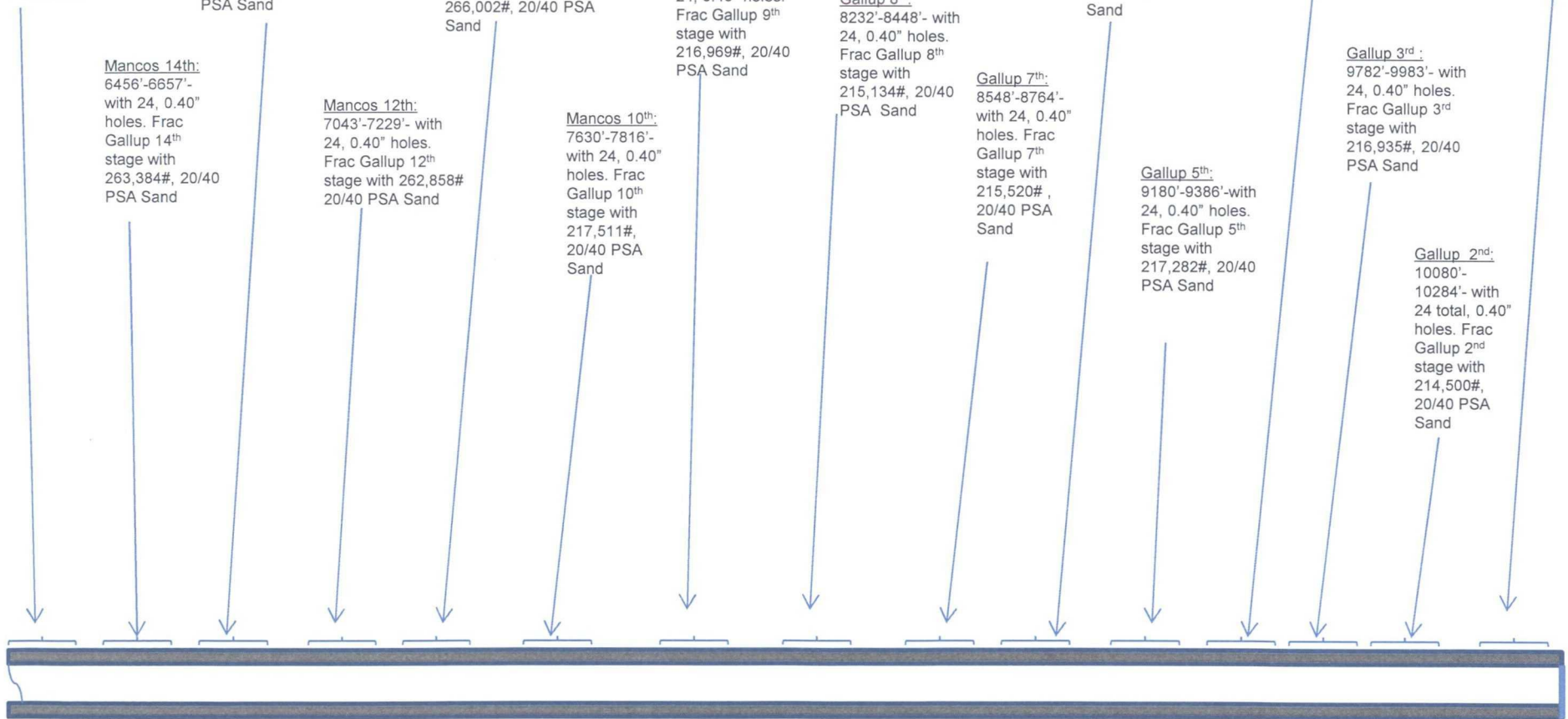
Gallup 5th:
9180'-9386'-with
24, 0.40" holes.
Frac Gallup 5th
stage with
217,282#, 20/40
PSA Sand

Gallup 4th:
9481'-9682'-
with 24, 0.40"
holes. Frac
Gallup 4th stage
with 217,154#,
20/40 PSA
Sand

Gallup 3rd:
9782'-9983'- with
24, 0.40" holes.
Frac Gallup 3rd
stage with
216,935#, 20/40
PSA Sand

Gallup 2nd:
10080'-
10284'- with
24 total, 0.40"
holes. Frac
Gallup 2nd
stage with
214,500#,
20/40 PSA
Sand

Gallup 1st:
10384'-10519' +
RSI TOOL @
10586' with
215,767# 20/40
PSA Sand



See page 1 for upper portion of hole