

UNITED STATES
DEPARTMENT OF THE INTERIOR
BUREAU OF LAND MANAGEMENT

RECEIVED

AUG 11 2015

FORM APPROVED
OMB No. 1004-0137
Expires: July 31, 2010

SUNDRY NOTICES AND REPORTS ON WELLS
Do not use this form for proposals to drill or to re-enter an abandoned well. Use Form 3160-3 (APD) for such proposals.

5. Lease Serial No.

SF-079393

6. If Indian Allottee or Tribe Name
Farmington Field Office
Bureau of Land Management

SUBMIT IN TRIPLICATE - Other instructions on page 2.

1. Type of Well

☐ Oil Well

☒ Gas Well

☐ Other

7. If Unit of CA/Agreement, Name and/or No.

San Juan 27-5 Unit

8. Well Name and No.

San Juan 27-5 Unit HZ 59G

2. Name of Operator

Burlington Resources Oil & Gas Company LP

9. API Well No.

30-039-30545

3a. Address

PO Box 4289, Farmington, NM 87499

3b. Phone No. (include area code)

(505) 326-9700

10. Field and Pool or Exploratory Area

Basin Dakota

4. Location of Well (Footage, Sec., T., R., M., or Survey Description)

Surface UNIT H (SENE), 2455' FNL & 785' FEL. Sec. 06, T27N, R05W

Bottomhole UNIT D (NWNW), 660' FNL & 660' FWL. Sec. 06, T27N, R05W

11. Country or Parish, State

Rio Arriba

New Mexico

12. CHECK THE APPROPRIATE BOX(ES) TO INDICATE NATURE OF NOTICE, REPORT OR OTHER DATA

TYPE OF SUBMISSION

TYPE OF ACTION

☒ Notice of Intent

☐ Acidize

☐ Deepen

☐ Production (Start/Resume)

☐ Water Shut-Off

☐ Subsequent Report

☐ Alter Casing

☐ Fracture Treat

☐ Reclamation

☐ Well Integrity

☐ Casing Repair

☐ New Construction

☐ Recomplete

☐ Other

☐ Change Plans

☒ Plug and Abandon

☐ Temporarily Abandon

☐ Final Abandonment Notice

☐ Convert to Injection

☐ Plug Back

☐ Water Disposal

13. Describe Proposed or Completed Operation: Clearly state all pertinent details, including estimated starting date of any proposed work and approximate duration thereof.

If the proposal is to deepen directionally or recompleat horizontally, give subsurface locations and measured and true vertical depths of all pertinent markers and zones. Attach the bond under which the work will be performed or provide the Bond No. on file with BLM/BIA. Required subsequent reports must be filed within 30 days following completion of the involved operations. If the operation results in a multiple completion or recompleat in a new interval, a Form 3160-4 must be filed once Testing has been completed. Final Abandonment Notices must be filed only after all requirements, including reclamation, have been completed and the operator has determined that the site is ready for final inspection.)

Burlington Resources requests permission to P&A the subject well per the attached procedure, current & proposed wellbore schematics. The Pre-Disturbance oniste was held on 08/10/2015 with Bob Switzer/BLM. The Re-Vegetation Plan is attached. A closed loop system will be utilized for this P&A.

OIL CONS. DIV DIST. 3

BLM'S APPROVAL OR ACCEPTANCE OF THIS
ACTION DOES NOT RELIEVE THE LESSEE AND
OPERATOR FROM OBTAINING ANY OTHER
AUTHORIZATION REQUIRED FOR OPERATIONS
ON FEDERAL AND INDIAN LANDS

AUG 24 2015

Notify NMOCD 24 hrs
prior to beginning
operations

**SEE ATTACHED FOR
CONDITIONS OF APPROVAL**

14. I hereby certify that the foregoing is true and correct. Name (Printed/Typed)

Arleen White

Staff Regulatory Technician

Title

Signature

Arleen White

Date

8/11/15

THIS SPACE FOR FEDERAL OR STATE OFFICE USE

Approved by

Troy Salvors

Title **PE**

Date **8/20/2015**

Conditions of approval, if any, are attached. Approval of this notice does not warrant or certify that the applicant holds legal or equitable title to those rights in the subject lease which would entitle the applicant to conduct operations thereon.

Office **FEO**

Title 18 U.S.C. Section 1001 and Title 43 U.S.C. Section 1212, make it a crime for any person knowingly and willfully to make to any department or agency of the United States any false, fictitious or fraudulent statements or representations as to any matter within its jurisdiction.

(Instruction on page 2)

NMOCD

PC
5 KC

ConocoPhillips
SAN JUAN 27-5 UNIT HZ 59G
Expense - P&A

Lat 36° 36' 13.6476" N

Long 107° 23' 34.4904" W

PROCEDURE

NOTE: Insert note here

This project requires the use of an A-Plus steel tank to handle waste fluids circulated from the well and cement wash up.

1. Hold pre-job safety meeting. Comply with all NMOCD, BLM, and COPC safety and environmental regulations. Test rig anchors prior to moving in rig. **Before RU, run WL remove downhole equipment. If an obstruction is found, set a locking-3-slip-stop in the tubing.**

2. MIRU workover rig. Check casing and bradenhead pressures and record them in Wellview. **If there is pressure on the BH, contact the Wells Engineer.**

3. Remove existing piping on casing valve. RU blow lines from casing valves and begin blowing down casing pressure. Kill well as necessary. Ensure well is dead or on a vacuum.

4. ND wellhead and NU BOPE. Pressure and function test BOP to 250 psi low and 1,000 psi over SICP high to a maximum of 2,000 psi held and charted for 10 minutes as per COP Well Control Manual. Load hole, and pressure test casing to 800 psi. If casing does not test, then spot or tag subsequent plugs as appropriate.

5. RU wireline and run CBL with 500 psi on casing from top of Cement plug at 3308 to surface to identify TOC. *Adjust plugs as necessary for new TOC. Email log copy to Troy Salyers (BLM) at tsalyers@blm.gov and Brandon Powell (NMOCD) at brandon.powell@state.nm.us upon completion of logging operations.*

All cement volumes use 100% excess outside pipe and 50' excess inside pipe. The stabilizing wellbore fluid will be 8.3 ppg, sufficient to balance all exposed formation pressures. All cement will be ASTM Class B mixed at 15.6 ppg with a 1.18 cf/sk yield.

See COA

6. Plug 1 (Pictured Cliffs, Fruitland Formation Tops , 3034-3308', 120 Sacks Class B Cement)

Mix 120 sx Class B cement and spot a balanced plug inside the casing to cover the Pictured Cliffs, Fruitland formation tops. PUH.

See COA

7. Plug 2 (Kirtland, Ojo Formation Tops, 2533-2819', 124 Sacks Class B Cement)

Mix 124 sx Class B cement and spot a balanced plug inside the casing to cover the Kirtland and Ojo formation tops. PUH.

See COA

8. Plug 3 (Nacimiento Formation Top , 1241-1341', 56 Sacks Class B Cement)

Mix 56 sx Class B cement and spot a balanced plug inside the casing to cover the Nacimiento formation top. PUH.

9. Plug 4 Surface Plug, 0-280', 122 Sacks Class B Cement)

Connect the pump line to the bradenhead valve and attempt to pressure test the BH annulus to 300 psi. Note the volume to load. If the BH annulus holds pressure, then establish circulation out casing valve with water. Mix 122 sx Class B cement and spot balanced plug inside casing from 280' to surface, circulating good cement out casing valve. TOO H and LD tubing. SI well and WOC. If the BH annulus does not test, then perforate at the appropriate depth and attempt to circulate cement to surface, filling the casing and the BH annulus to surface. Shut well in and WOC.

10. Nipple down BOP and cut off casing below the casing flange. Install P&A marker with cement to comply with regulations. Rig down, move off location, cut off anchors, and restore location.



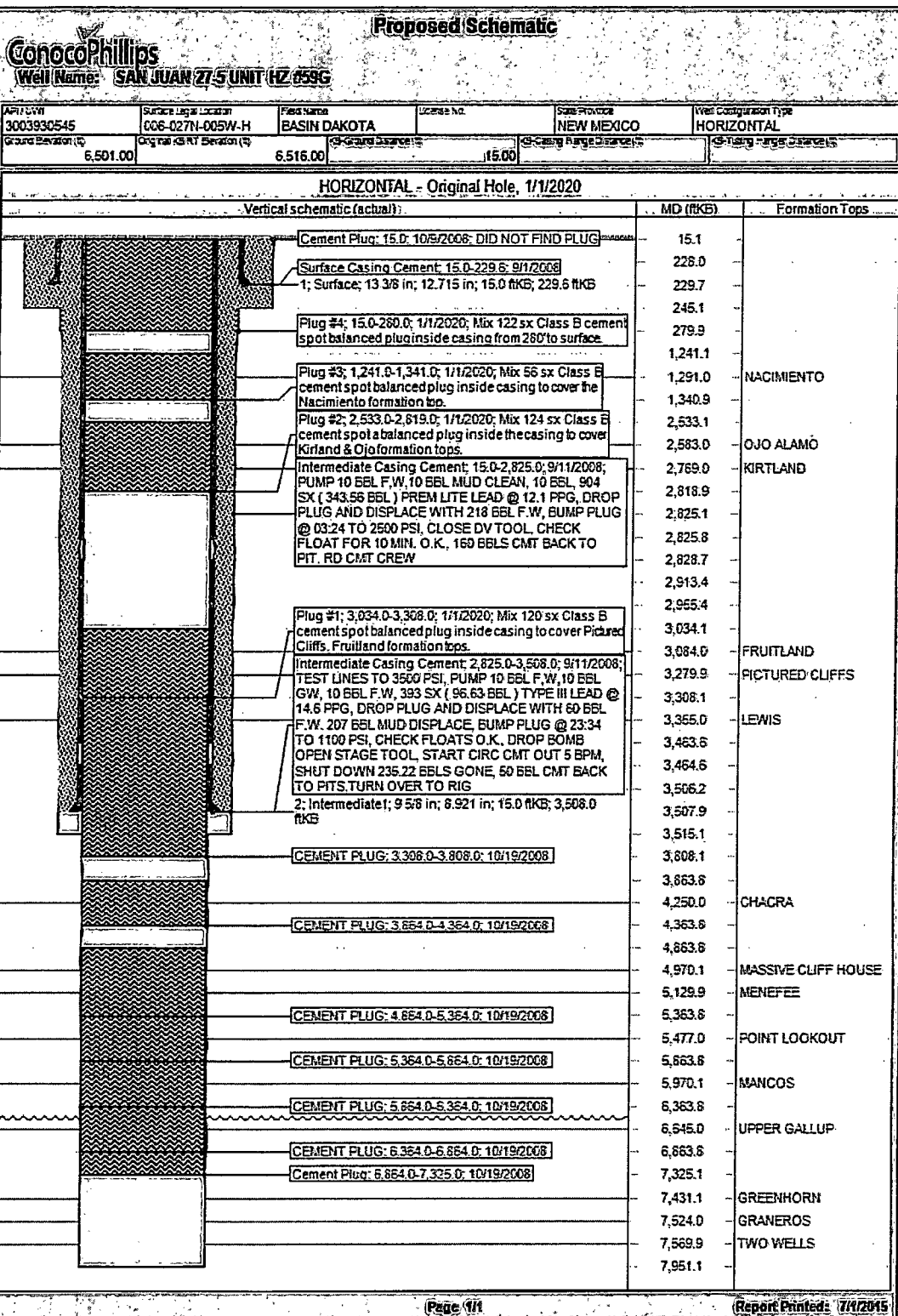
Schematic - Current

SAN JUAN 27-5 UNIT HZ #59G

District SOUTH	Field Name BASIN DAKOTA	API UTM 3003930545	County RIO ARriba	State/Province NEW MEXICO
Original Spud Date 8/31/2008	Surface Legal Location 006-027N-005W-H	East/West Distance (ft) 755.00	East/West Reference FEL	North/South Distance (ft) 2,455.00
North/South Reference FNL				

HORIZONTAL - Original Hole, 7/1/2015 12:35:14 PM

Vertical schematic (actual)		MD (ftKB)	Formation Tops
1; Surface: 13 3/8 in; 12.715 in; 15.0 ftKB: 229.6 ftKB	Cement Plug: 15.0; 10/9/2008; DID NOT FIND PLUG	15	
	Surface Casing Cement: 15.0-245.0; 9/1/2008; Cemented w/ 391 sx Type III Circ 58 bbls to surface.	245	
	Intermediate Casing Cement: 15.0- 2,825.0; 9/11/2008; PUMP 10 BBL F.W. 10 BBL MUD CLEAN, 10 BBL, 904 SX (343.58 BBL) PREM LITE LEAD @ 12.1 PPG, DROP PLUG AND DISPLACE WITH 218 BBL F.W. BUMP PLUG @ 03:24 TO 2500 PSI, CLOSE DV TOOL, CHECK FLOAT FOR 10 MIN. O.K., 180 BBLs CMT BACK TO FIT, RD CMT CREW	1,291	NACIMIENTO
		2,583	OJO ALAMO
		2,789	KIRTLAND
		2,825	
		3,084	FRUITLAND
	Intermediate Casing Cement: 2,825.0- 3,508.0; 9/11/2008; TEST LINES TO 3500 PSI, PUMP 10 BBL F.W. 10 BBL GW, 10 BBL F.W. 393 SX (98.83 BBL) TYPE III LEAD @ 14.6 PPG, DROP PLUG AND DISPLACE WITH 60 BBL F.W. 207 BBL MUD DISPLACE, BUMP PLUG @ 23:34 TO 1100 PSI, CHECK FLOATS O.K., DROP BOMB OPEN STAGE TOOL, START CIRC CMT OUT 5 BPM, SHUT DOWN 235.22 BBLs GONE, 50 BBL CMT BACK TO PITS, TURN OVER TO RIG	3,280	PICTURED CL...
		3,308	
		3,355	LEWIS
2; Intermediate: 9 5/8 in; 8.821 in; 15.0 ftKB: 3,508.0 ftKB		3,508	
		3,515	
		3,808	
		3,884	
	CEMENT PLUG: 3,308.0-3,884.0; 10/19/2008; Cemented w/ 150 sx Type III cmt.	4,250	CHACRA
	CEMENT PLUG: 3,884.0-4,384.0; 10/19/2008; Cemented w/ 150 sx Type III cmt.	4,384	
		4,384	
		4,870	MASSIVE CL...
		5,130	MENEFFEE
	CEMENT PLUG: 4,884.0-5,384.0; 10/19/2008; Cemented w/ 150 sx Type III cmt.	5,384	
		5,477	POINT LOOK...
	CEMENT PLUG: 5,384.0-5,884.0; 10/19/2008; Cemented w/ 150 sx Type III cmt.	5,884	
		5,870	MANCOS
		6,384	
	CEMENT PLUG: 6,384.0-6,884.0; 10/19/2008; Cemented w/ 150 sx Type III cmt.	6,845	UPPER GALLUP
		6,884	
	Cement Plug: 6,884.0-7,325.0; 10/19/2008; Cemented w/ 150 sx Type III cmt.	7,325	
		7,431	GREENHORN
		7,524	GRANEROS
		7,570	TWO WELLS
		7,951	



UNITED STATES DEPARTMENT OF THE INTERIOR
BUREAU OF LAND MANAGEMENT
FARMINGTON DISTRICT OFFICE
6251 COLLEGE BLVD.
FARMINGTON, NEW MEXICO 87402

Attachment to notice of
Intention to Abandon:

Re: Permanent Abandonment
Well: San Juan 27-5 Unit #59G

CONDITIONS OF APPROVAL

1. Plugging operations authorized are subject to the attached "General Requirements for Permanent Abandonment of Wells on Federal and Indian Lease."
2. Farmington Office is to be notified at least 24 hours before the plugging operations commence (505) 564-7750.
3. The following modifications to your plugging program are to be made:
 - a) Bring the top of plug #1 to 3010 ft. to cover the Pictured Cliffs and Fruitland tops. Adjust cement volume accordingly.
 - b) Set plug #2 (2903-2606) ft. to cover the Kirtland and Ojo Alamo tops. Adjust cement volume accordingly.
 - c) Set plug #3 (1476-1376) ft. to cover the Nacimiento top. BLM picks top of Nacimiento at 1426 ft.

Note: Well plugged back to 3308 ft. in October, 2008.

You are also required to place cement excesses per 4.2 and 4.4 of the attached General Requirements.

Office Hours: 7:45 a.m. to 4:30 p.m.