

UNITED STATES
DEPARTMENT OF THE INTERIOR
BUREAU OF LAND MANAGEMENT

FORM APPROVED
OMB No. 1004-0137
Expires: July 31, 2010

RECEIVED

AUG 19 2015

SUNDRY NOTICES AND REPORTS ON WELLS
Do not use this form for proposals to drill or to re-enter an
abandoned well. Use Form 3160-3 (APD) for such proposals.

5. Lease Serial No.

Contract 147

6. If Indian, Allottee or Tribe Name

Jicarilla Apache

Farmington Field Office
Bureau of Land Management

SUBMIT IN TRIPLICATE - Other instructions on page 2.

1. Type of Well

☐ Oil Well

☒ Gas Well

☐ Other

7. If Unit of CA/Agreement, Name and/or No.

8. Well Name and No.

AXI Apache J #21

2. Name of Operator

ConocoPhillips Company

9. API Well No.

30-039-20437

3a. Address

PO Box 4289, Farmington, NM 87499

3b. Phone No. (include area code)

(505) 326-9700

10. Field and Pool or Exploratory Area

Otero Chacra / Mesa Verde

4. Location of Well (Footage, Sec., T., R., M., or Survey Description)

UL I (NESE), 1850' FSL & 790' FEL, Section 5, T25N, R5W

11. Country or Parish, State

Rio Arriba

New Mexico

12. CHECK THE APPROPRIATE BOX(ES) TO INDICATE NATURE OF NOTICE, REPORT OR OTHER DATA

TYPE OF SUBMISSION

TYPE OF ACTION

☒ Notice of Intent

☐ Acidize

☐ Deepen

☐ Production (Start/Resume)

☐ Water Shut-Off

☐ Subsequent Report

☐ Alter Casing

☐ Fracture Treat

☐ Reclamation

☐ Well Integrity

☒ Casing Repair

☐ New Construction

☐ Recomplete

☐ Other

☐ Final Abandonment Notice

☐ Change Plans

☐ Plug and Abandon

☐ Temporarily Abandon

☐ Convert to Injection

☐ Plug Back

☐ Water Disposal

13. Describe Proposed or Completed Operation: Clearly state all pertinent details, including estimated starting date of any proposed work and approximate duration thereof.

If the proposal is to deepen directionally or recompleat horizontally, give subsurface locations and measured and true vertical depths of all pertinent markers and zones. Attach the bond under which the work will be performed or provide the Bond No. on file with BLM/BIA. Required subsequent reports must be filed within 30 days following completion of the involved operations. If the operation results in a multiple completion or recompleat in a new interval, a Form 3160-4 must be filed once Testing has been completed. Final Abandonment Notices must be filed only after all requirements, including reclamation, have been completed and the operator has determined that the site is ready for final inspection.)

On July 13, ConocoPhillips gave the BLM and OCD notice that we suspected a casing leak on this well. Attached are the plans to isolate the leak if there is one and remediate. Once the work is completed we will return this well to production.

BLM'S APPROVAL OR ACCEPTANCE OF THIS ACTION DOES NOT RELIEVE THE LESSEE AND OPERATOR FROM OBTAINING ANY OTHER AUTHORIZATION REQUIRED FOR OPERATIONS ON FEDERAL AND INDIAN LANDS

Notify NMOCD 24 hrs
prior to beginning
operations

**SEE ATTACHED FOR
CONDITIONS OF APPROVAL
OIL CONS. DIV DIST. 3**

AUG 24 2015

14. I hereby certify that the foregoing is true and correct. Name (Printed/Typed)

Patsy Clugston

Staff Regulatory Technician

Title

Signature

Patsy Clugston

Date

8/18/2015

THIS SPACE FOR FEDERAL OR STATE OFFICE USE

Approved by

Abdelgadir Elmadani

Title

PE

Date

08/20/15

Conditions of approval, if any, are attached. Approval of this notice does not warrant or certify that the applicant holds legal or equitable title to those rights in the subject lease which would entitle the applicant to conduct operations thereon.

Office

FFO

Title 18 U.S.C. Section 1001 and Title 43 U.S.C. Section 1212, make it a crime for any person knowingly and willfully to make to any department or agency of the United States any false, fictitious or fraudulent statements or representations as to any matter within its jurisdiction.

NMOCD

4

ConocoPhillips
AXI APACHE J 21
Expense - Repair Casing

Lat 36° 25' 36.26" N

Long 107° 22' 34.068" W

PROCEDURE

1. Hold pre-job safety meeting. Comply with all NMOCD, BLM, and COPC safety and environmental regulations. Test rig anchors prior to moving in rig.
2. MIRU workover rig. Check casing, tubing, and bradenhead pressures and record them in Wellview. **If there is pressure on the BH, contact Wells Engineer.**
3. Remove existing piping on casing valve. RU blow lines from casing valves and begin blowing down casing pressure. Kill well with 2% KCl as necessary. Ensure well is dead or on vacuum.
4. ND wellhead and NU BOPE. Pressure and function test BOP to 250 psi low and 1,000 psi over SICP high to a maximum of 2,000 psi held and charted for 10 minutes as per COPC Well Control Manual. PU and remove tubing hanger and tag for fill, adding additional joints as needed. Record pressure test and fill depth in Wellview.
5. RU Tuboscope Unit to inspect tubing. TOOH with tubing (per pertinent data sheet). LD and replace any bad joints and record findings in Wellview. **Make note of corrosion, scale, or paraffin and save a sample to give to CIC/engineering for further analysis.**
6. PU 4-3/4" string mill and bit and CO to PBTD at 5,275' (last recorded run depth above fish) using the air package. TOOH. LD mill and bit. If fill could not be CO to PBTD, call Wells Engineer to inform how much fill was left and confirm/adjust landing depth.
7. **Note: abnormal water influx into the well occurred, source is unknown suspected casing leak.** PU packer and retrievable bridge plug on tubing. Locate casing leak using packers. After casing leak(s) is located, discuss with engineer and determine depth to set CBP and run casing integrity log and CBL from below the casing leak to surface. Squeeze cement as discussed with engineer. WOC. Drill out cement but not the CBP. Pressure test casing to 560 psi. Contact engineer with results and discuss plan forward. If test passes, pressure test the wellbore to 560 psig for 30 minutes on a 2 hour chart with 1000# spring, then mill out CBP.
8. TIH with tubing using Tubing Drift Procedure. (detail below).

Tubing Wt/Grade: 4.7 ppf, J-55
Tubing Drift ID: 1.901"

Land Tubing At: 5,092"
KB: 12'

Tubing and BHA Description	
1	2-3/8" Exp. Check
1	1.78" ID "F" Nipple
1	full jt 2-3/8" tubing
1	pup joint (2' or 4')
+/-160	jts 2-3/8" tubing
As Needed	pup joints for spacing
1	full jt 2-3/8" tubing

9. Ensure barriers are holding. ND BOPE, NU Wellhead. Pressure test tubing slowly with an air package as follows: pump 3 bbls pad, drop steel ball, pressure tubing up to 500 psi, and bypass air. Monitor pressure for 15 mins., then complete the operation by pumping off the expendable check. Note in Wellview the pressure in which the check pumped off. Purge air as necessary. Notify the MSO that the well is ready to be turned over to Production Operations. RDMO.

Tubing Drift Procedure

PROCEDURE

1. Set flow control in tubing. With air, on location, use expendable check. With no air on location, use wire line plug.
2. RU drift tool to a minimum 70' line. Drift tool will have an OD of at least the API drift specification of the drift diameter of the tubing to be drifted, and will be at least 15" long. The tool will not weigh more than 10# and will have an ID bore the length of the tool, so fluids may be pumped through the tool if it becomes stuck.
3. Drop the tool into the tubing string and retrieve it after every 2 joints of tubing ran in hole. If any resistance to the tool movement is noticed, going in or out, that joint will be replaced.

NOTE: All equipment must be kept clean and free of debris. The drift tool will be measured with calipers before each job, to ensure the OD is the correct size for the tubing being checked. The maximum allowable wear of the tool is 0.003".



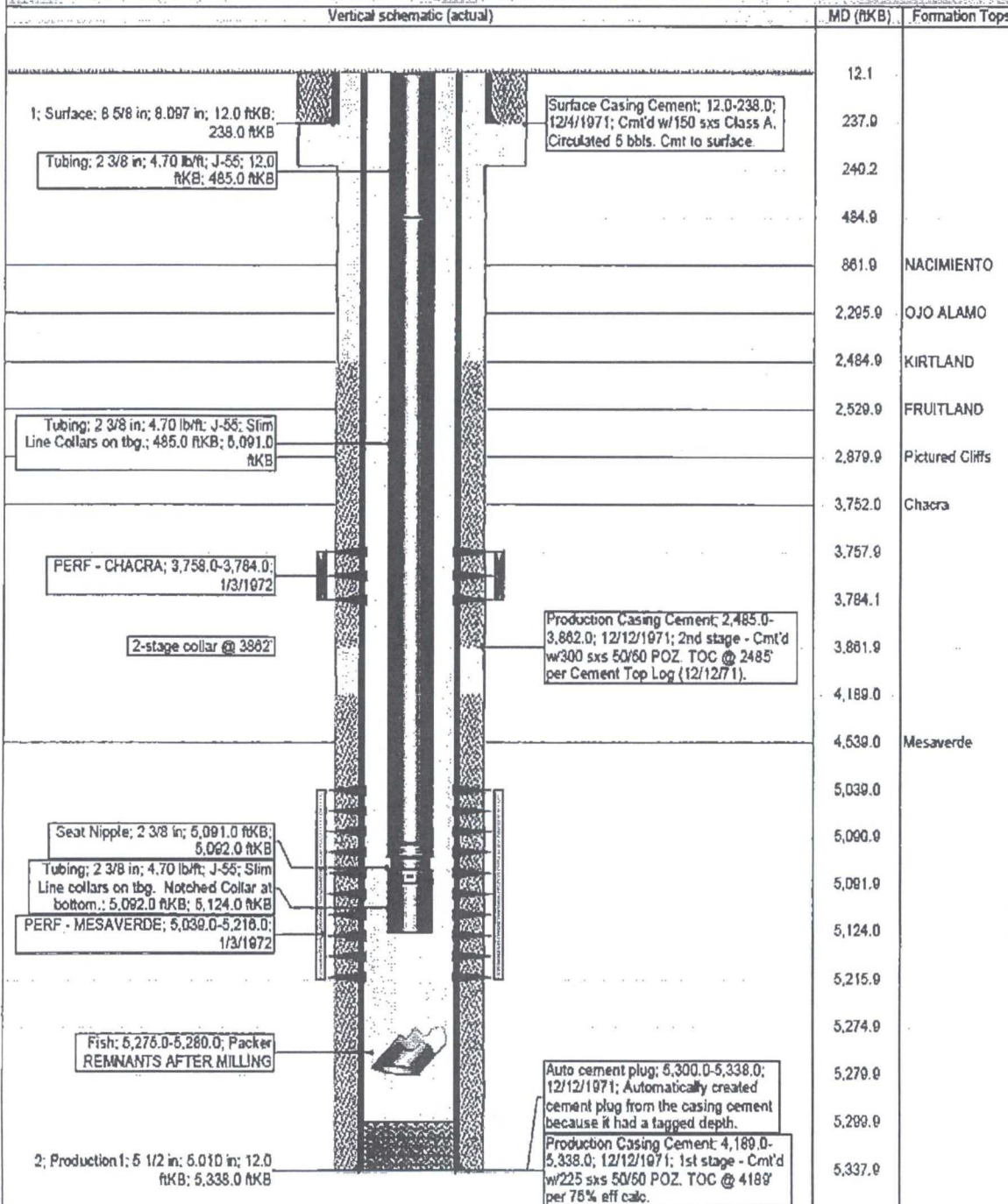
Schematic - Current

AXI APACHE J #21

District SOUTH	Field Name CH/MV COM	API / UWI 3003920437	County RIO ARRIBA	State/Province NEW MEXICO
Original Spud Date 12/3/1971	Surface Legal Location NMPM-25N-05W-05-1	East/West Distance (ft) 760.00	East/West Reference FEL	North/South Distance (ft) 1,850.00
				North/South Reference FSL

Vertical - Original Hole, 7/24/2015 7:52:27 AM

Vertical schematic (actual)



BLM CONDITION OF APPROVAL

CASING REPAIR, WORKOVER AND RECOMPLETION OPERATIONS:

1. If casing repair operations are needed, obtain prior approval from this office before commencing repairs. If a CBL or other logs are run, provide this office with a copy.
2. After any casing repair operations, test cement squeeze to a minimum of 500# for 30 minutes with no more than 10 % pressure fall off in the 30 minute test period. Provide test chart with your subsequent report of operations
3. A properly functioning BOP and related equipment must be installed prior to commencing workover, casing repair, and/or recompletion operations.
4. Contact this office at (505) 564-7750 prior to conducting any cementing operations

SPECIAL STIPULATIONS:

1. Pits will be fenced during work-over operation.
2. All disturbance will be kept on existing pad.
3. All pits will be pulled and closed immediately upon completion of the recompletion and work-over activities.
4. Pits will be lined with an impervious material at least 12 mils thick.