

UNITED STATES  
DEPARTMENT OF THE INTERIOR  
BUREAU OF LAND MANAGEMENTFORM APPROVED  
OMB NO. 1004-0135  
Expires: July 31, 2010**SUNDRY NOTICES AND REPORTS ON WELLS**  
**Do not use this form for proposals to drill or to re-enter an abandoned well. Use form 3160-3 (APD) for such proposals.****SUBMIT IN TRIPLICATE - Other instructions on reverse side.**5. Lease Serial No.  
NMSF078860

6. If Indian, Allottee or Tribe Name

7. If Unit or CA/Agreement, Name and/or No.

1. Type of Well

☒ Oil Well ☐ Gas Well ☐ Other8. Well Name and No.  
LARGO FEDERAL B 1

2. Name of Operator

DUGAN PRODUCTION CORPORATION

Contact: ALIPH REENA

Email: aliph.reena@duganproduction.com

9. API Well No.  
30-045-05103-00-S1

3a. Address

P.O. 420  
FARMINGTON, NM 87499

3b. Phone No. (include area code)

Ph: 505-325-1821

10. Field and Pool, or Exploratory  
BISTI

4. Location of Well (Footage, Sec., T., R., M., or Survey Description)

Sec 22 T24N R9W NENE 0840FNL 0790FEL  
36.304489 N Lat, 107.770004 W Lon11. County or Parish, and State  
SAN JUAN COUNTY, NM

## 12. CHECK APPROPRIATE BOX(ES) TO INDICATE NATURE OF NOTICE, REPORT, OR OTHER DATA

## TYPE OF SUBMISSION

## TYPE OF ACTION

☐ Notice of Intent☒ Subsequent Report☐ Final Abandonment Notice☐ Acidize☐ Alter Casing☐ Casing Repair☐ Change Plans☐ Convert to Injection☐ Deepen☐ Fracture Treat☐ New Construction☒ Plug and Abandon☐ Plug Back☐ Production (Start/Resume)☐ Reclamation☐ Recomplete☐ Temporarily Abandon☐ Water Disposal☐ Water Shut-Off☐ Well Integrity☐ Other

13. Describe Proposed or Completed Operation (clearly state all pertinent details, including estimated starting date of any proposed work and approximate duration thereof. If the proposal is to deepen directionally or recompleat horizontally, give subsurface locations and measured and true vertical depths of all pertinent markers and zones. Attach the Bond under which the work will be performed or provide the Bond No. on file with BLM/BIA. Required subsequent reports shall be filed within 30 days following completion of the involved operations. If the operation results in a multiple completion or recompleat in a new interval, a Form 3160-4 shall be filed once testing has been completed. Final Abandonment Notices shall be filed only after all requirements, including reclamation, have been completed, and the operator has determined that the site is ready for final inspection.)

The well was plugged &amp; abandoned on 8/3/2015 as per the following procedure:

- 1) Set CR @ 5122'. Pressure test casing. Casing won't test. Run CBL.
- 2) Spot plug above retainer @ 5122 w/30.9 cu ft (27 sks) Class G cement w/2% CaCl<sub>2</sub> (15.8#/gal, 1.15 cu ft/sk). WOC. Tagged TOC @ 4873'. Plug I 4873'-5122'
- 3) Perforate @ 4280'. Set CR @ 4244'. Set inside/outside plug w/67.4 cu ft (59 sks) Class G cement w/1% CaCl<sub>2</sub> (15.8#/gal, 1.15 cu ft/sk). WOC. Tag TOC @ 4152'. Plug II 4152'-4280'
- 4) Perforate @ 2460'. Set CR @ 2406'. Set inside/outside plug w/78.6 cu ft (68 sks) Class G cement w/1% CaCl<sub>2</sub> (15.8#/gal, 1.15 cu ft/sk). WOC. Tag TOC @ 2293'. Plug III 2293'-2460'
- 5) Pressure test casing to 600 psi. Held ok. Perforate @ 1640'. CR @ 1601'. Set inside/outside plug between 1506'-1640' w/78.6 cu ft (68 sks) Class G neat cement (15.8#/gal, 1.15 cu ft/sk) cement. Plug VI 1506'-1640'
- 6) Perforate @ 1328'. Set inside/outside plug between 1228'-1328' w/56.14 cu ft (49 sks) Class G

OIL CONS. DIV DIST. 3

AUG 26 2015

14. I hereby certify that the foregoing is true and correct.

**Electronic Submission #312423 verified by the BLM Well Information System  
For DUGAN PRODUCTION CORPORATION, sent to the Farmington  
Committed to AFMSS for processing by JACK SAVAGE on 08/17/2015 (15TLS0238SE)**

Name (Printed/Typed) ALIPH REENA

Title PRODUCTION ENGINEER

Signature (Electronic Submission)

Date 08/12/2015

## THIS SPACE FOR FEDERAL OR STATE OFFICE USE

Approved By

ACCEPTED

JACK SAVAGE  
Title PETROLEUM ENGINEER

Date 08/17/2015

Conditions of approval, if any, are attached. Approval of this notice does not warrant or certify that the applicant holds legal or equitable title to those rights in the subject lease which would entitle the applicant to conduct operations thereon.

Office Farmington

Title 18 U.S.C. Section 1001 and Title 43 U.S.C. Section 1212, make it a crime for any person knowingly and willfully to make to any department or agency of the United States any false, fictitious or fraudulent statements or representations as to any matter within its jurisdiction.

\*\* BLM REVISED \*\* BLM REVISED \*\* BLM REVISED \*\* BLM REVISED \*\* BLM REVISED \*\*

NMOCD FV

3

**Additional data for EC transaction #312423 that would not fit on the form**

**32. Additional remarks, continued**

(15.8#/gal, 1.15 cu ft/sk) cement. Tagged at 1101'. Plug V 1101'-1328'  
7) Perforate @ 1041'. Set CR @ 1000'. Set inside/outside plug between 723'-1041' w/134.7 cu ft (117 sks) Class G cement (15.8#/gal, 1.15 cu ft/sk) w/1% CaCl<sub>2</sub>. Plug VI 723'-1041'  
8) Perforate @ 317'. Circulate cement to surface w/179.6 cu ft (156 sks) Class G cement  
9) Cut wellhead. Tag TOC at surface  
10) Install dry hole marker. Cut anchor. Clean location. Well P&A'd on 8/3/2015. John Hagstorm w/BLM witnessed job.

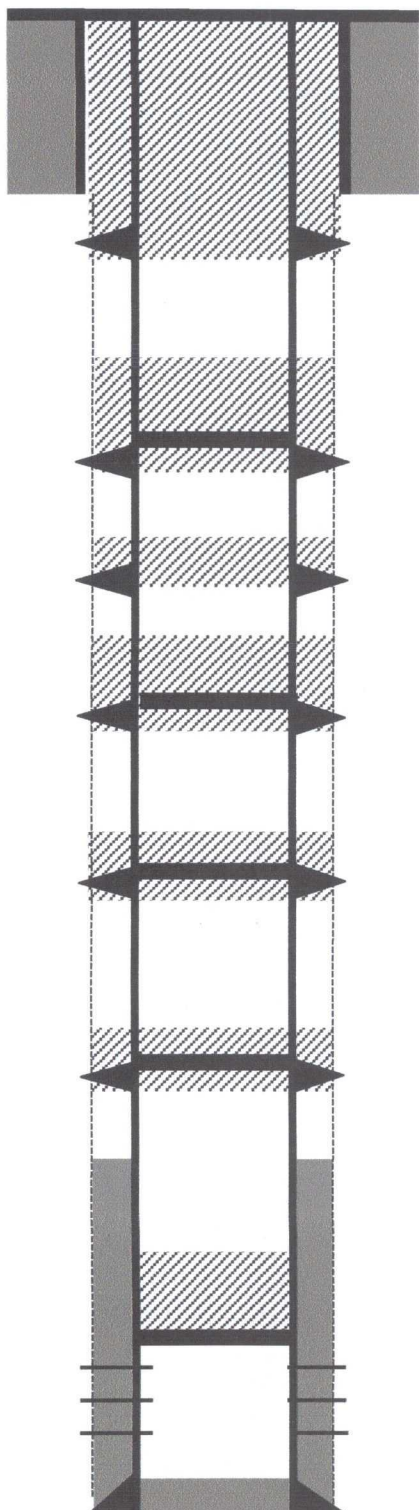
### P & A Schematic

Largo B Federal # 1, Gallup

300-45-05103

840 FNL' FSL & 790' FEL

A S22 T24N R9W



8 5/8" 24# casing @ 267'. Cemented with 250 sks Cement.

Perforate @ 317'. Circulate cement to surface w/ 179.6 cu.ft Class G Plug VII: Surface - 317'

Perforate @ 1041'. CR @ 1000'. Set inside/outside w/ 134.7 cu.ft Class G. Plug VI 723'-1041'.

Perforate @ 1328'. Spot inside/outside plug w/ 56.14 cu.ft Class G. Plug V: 1101'-1328'.

Perforate @ 1640'. CR at 1601'. Set inside/outside plug w/ 78.6 cu.ft Class G. Plug IV: 1506'-1640'

Perforate @ 2460'. CR @ 2406'. Set inside/outside plug w/ 78.6 cu.ft Class G. Plug III: 2293'-2460'.

Perforate @ 4280'. CR @ 4244'. Set inside/outside plug w/ 67.4 cu.ft Class G. Plug II: 4152'-4280'

Cemented with 125 sks Cement. Top of cement from CBL @ 4450'.

Set CIBP @ 5122'. Spot Inside Plug with 30.9 cu.ft Class G. Plug I 4873'-5122'.

Gallup Perforations @ 5172' - 5214'

5 1/2" 14 # casing @ 5270'