

Submit 1 Copy To Appropriate District Office
District I - (575) 393-6161
1625 N. French Dr., Hobbs, NM 88240
District II - (575) 748-1283
811 S. First St., Artesia, NM 88210
District III - (505) 334-6178
1000 Rio Brazos Rd., Aztec, NM 87410
District IV - (505) 476-3460
1220 S. St. Francis Dr., Santa Fe, NM 87505

State of New Mexico
Energy, Minerals and Natural Resources

Form C-103
Revised July 18, 2013

OIL CONSERVATION DIVISION
1220 South St. Francis Dr.
Santa Fe, NM 87505

WELL API NO. 30-045-29407
5. Indicate Type of Lease STATE <input type="checkbox"/> FEE <input checked="" type="checkbox"/>
6. State Oil & Gas Lease No.
7. Lease Name or Unit Agreement Name Ropco 15 GW A PC B FC
8. Well Number 01
9. OGRID Number 5380
10. Pool name or Wildcat W. Kutz PC / Basin FC
11. Elevation (Show whether DR, RKB, RT, GR, etc.) 5304' GL

SUNDRY NOTICES AND REPORTS ON WELLS (DO NOT USE THIS FORM FOR PROPOSALS TO DRILL OR TO DEEPEN OR PLUG BACK TO A DIFFERENT RESERVOIR. USE "APPLICATION FOR PERMIT" (FORM C-101) FOR SUCH PROPOSALS.)	
1. Type of Well: Oil Well <input type="checkbox"/> Gas Well <input checked="" type="checkbox"/> Other	
2. Name of Operator XTO ENERGY INC.	
3. Address of Operator 382 CR 3100, AZTEC, NM 87410	
4. Well Location Unit Letter H : 2171' feet from the North line and 775' feet from the East line Section 15 Township 29N Range 13W NMPM County San Juan	
11. Elevation (Show whether DR, RKB, RT, GR, etc.) 5304' GL	

12. Check Appropriate Box to Indicate Nature of Notice, Report or Other Data

NOTICE OF INTENTION TO:

PERFORM REMEDIAL WORK ☐ PLUG AND ABANDON ☐
TEMPORARILY ABANDON ☐ CHANGE PLANS ☐
PULL OR ALTER CASING ☐ MULTIPLE COMPL ☐
DOWNHOLE COMMINGLE ☐
CLOSED-LOOP SYSTEM ☐
OTHER: ☐

SUBSEQUENT REPORT OF:

REMEDIAL WORK ☐ ALTERING CASING ☐
COMMENCE DRILLING OPNS. ☐ P AND A ☒
CASING/CEMENT JOB ☐
OTHER: ☐

13. Describe proposed or completed operations. (Clearly state all pertinent details, and give pertinent dates, including estimated date of starting any proposed work). SEE RULE 19.15.7.14 NMAC. For Multiple Completions: Attach wellbore diagram of proposed completion or recompletion.

XTO Energy Inc. has plugged and abandoned this well per the attached report. XTO Energy set a below grade marker to bring the subject site back to agricultural endeavors. Please see attached C102 certified survey. A Closed Loop System was used, all liquid waste was taken to Basin Disposal (NM01-005).

OIL CONS. DIV DIST. 3

AUG 27 2015

Spud Date:

Rig Release Date:

I hereby certify that the information above is true and complete to the best of my knowledge and belief.

SIGNATURE Rhonda Smith TITLE Regulatory Clerk DATE 08-25-15

Type or print name Rhonda Smith E-mail address: rhonda_smith@xtoenergy.com PHONE: 505-333-3215

For State Use Only

APPROVED BY: [Signature] TITLE DEPUTY OIL & GAS INSPECTOR DATE 8/31/15

Conditions of Approval (if any):

AY

A-PLUS WELL SERVICE, INC.

P.O. BOX 1979

Farmington, New Mexico 87499

505-325-2627 *fax: 505-325-1211

XTO Energy Inc.

ROPCO 15 GW A PC B FC #1

August 7, 2015

Page 1 of 1

2171' FNL and 775' FEL, Section 15, T-29-N, R-13-W

San Juan County, NM

Lease Number: FEE

API #30-045-29407

Plug and Abandonment Report

Notified NMOCD and BLM on 8/5/15

Plug and Abandonment Summary:

Plug #1 with 4 sxs (4.72 cf) Class B cement from 1150' to 1098' to cover the Pictured Cliffs interval.

Plug #2 with CR at 1087' spot 20 sxs (23.6 cf) Class B cement from 1087' to 824' to cover the Fruitland Coal perfs.

Plug #3 with 20 sxs (23.6 cf) Class B cement from 574' to 311' to cover the Fruitland Coal top.

Plug #4 with 23 sxs (27.14 cf) Class B cement from 195' to surface 1) pump 20 sxs to circulate good cement out casing valve, 2) TOH and LD all tubing, plugging sub and RU pump to 4-1/2" casing valve, 3) pump 3 sxs to refill 4-1/2" casing.

Plug #5 with 18 sxs Class B cement thru poly pipe top off 7" from 100' to surface and install P&A marker with coordinates N 36° 43' 40.2" / W 108° 11' 13.9".

Plugging Work Details:

8/6/15 Rode rig and equipment to location. Spot in and RU. Check pressures: tubing 0 PSI, casing 23 PSI and bradenhead 2 PSI. RU relief lines. X-over for rods. PU on rod string. LD PR and stuffing box, 4', 6' x 3/4" rod subs, 20 3/4" rods, 23 3/4" rods with MOG and 2" top-set pump, x-over for tubing. ND wellhead. MU 8-5/8" companion flange. NU BOP and function test. PU on tubing string. TOH and tally 1 jnt 2-3/8" 4.7# J-55 tubing 8', 4' x 2-3/8" subs 33 jnts, 2-3/8" tubing, SN perf sub and 2' OPMA (34 jnts tubing total tally 1087.18'). Round trip 3-7/8" string mill to 1150'. Pump 5 bpm pump 20 bbls. No circulation. Establish fluid level at 750'. Spot plug #1 with calculated TOC at 1098'. PU 4-1/2" DHS CR and set at 1087'. Circulate well clean. Pressure test casing to 800 PSI, OK. Spot plug #2 with calculated TOC at 824'. Bradenhead pressured up to 300 PSI. SI well. SDFD.

8/7/15 Open up well; no pressures. Function test BOP. Spot plugs #3 and #4. ND BOP. NU wellhead. Dig out wellhead. RU High Desert. Write Hot Work Permit. Cut off wellhead. Found cement at surface in 4-1/2" casing and down 100' in 7" casing. Spot plug #5 Class B cement thru poly pipe top off 7" from 100' to surface and install P&A marker with coordinates N 36° 43' 40.2" / W 108° 11' 13.9". RD and MOL.

Vic Morrow, XTO representative was on location.

John Durham, NMOCD representative was on location.

District I
1625 N. French Dr., Hobbs, NM 88240
Phone: (575) 393-6161 Fax: (575) 393-0720
District II
811 S. First St., Artesia, NM 88210
Phone: (575) 748-1283 Fax: (575) 748-9720
District III
1000 Rio Brazos Road, Aztec, NM 87410
Phone: (505) 334-6178 Fax: (505) 334-6170
District IV
1220 S. St. Francis Dr., Santa Fe, NM 87505
Phone: (505) 476-3460 Fax: (505) 476-3462

State of New Mexico
Energy, Minerals & Natural Resources Department
OIL CONSERVATION DIVISION
1220 South St. Francis Dr.
Santa Fe, NM 87505

Form C-102
Revised August 1, 2011
Submit one copy to appropriate
District Office

☐ AMENDED REPORT

WELL LOCATION AND ACREAGE DEDICATION PLAT

¹ API Number 30-045-29407	² Pool Code FC-77564 PC-77566	³ Pool Name Basin FC / N. Kutz PC
⁴ Property Code 303655	⁵ Property Name ROPCO 15 GW A PC B FC	
⁷ OGRID No. 5380	⁸ Operator Name XTO ENERGY INC.	⁶ Well Number 1
		⁹ Elevation 5,309

¹⁰ Surface Location

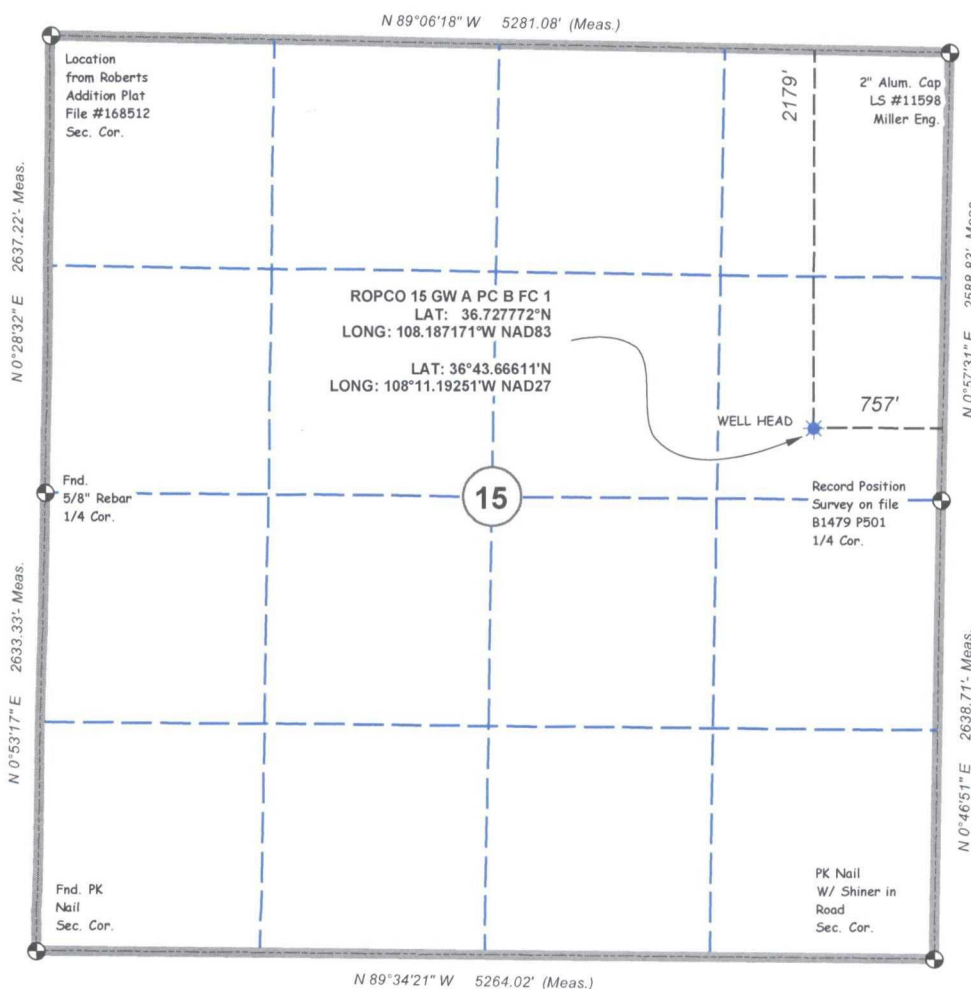
UL or lot no.	Section	Township	Range	Lot Idn	Feet from the	North/South line	Feet from the	East/West line	County
H	15	29 N	13W		2,179	NORTH	757	EAST	SAN JUAN

¹¹ Bottom Hole Location If Different From Surface

UL or lot no.	Section	Township	Range	Lot Idn	Feet from the	North/South line	Feet from the	East/West line	County

¹² Dedicated Acres	¹³ Joint or Infill	¹⁴ Consolidation Code	¹⁵ Order No.

No allowable will be assigned to this completion until all interests have been consolidated or a non-standard unit has been approved by the division.



¹⁷ OPERATOR CERTIFICATION

I hereby certify that the information contained herein is true and complete to the best of my knowledge and belief, and that this organization either owns a working interest or unleased mineral interest in the land including the proposed bottom hole location or has a right to drill this well at this location pursuant to a contract with an owner of such a mineral or working interest, or to a voluntary pooling agreement or a compulsory pooling order heretofore entered by the division.

Rhonda Smith 8/6/15
Signature Date

Rhonda Smith
Printed Name

rhonda.smith@xtocenergy.com
E-mail Address

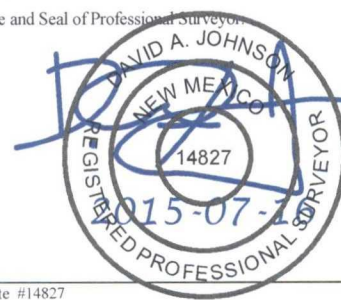
¹⁸ SURVEYOR CERTIFICATION

I hereby certify that the well location shown on this plat was plotted from field notes of actual surveys made by me or under my supervision, and that the same is true and correct to the best of my belief.

JULY 15, 2015

Date of Survey

Signature and Seal of Professional Surveyor



Certificate #14827