

UNITED STATES  
DEPARTMENT OF THE INTERIOR  
BUREAU OF LAND MANAGEMENTFORM APPROVED  
OMB NO. 1004-0137  
Expires March 31, 2007

## APPLICATION FOR PERMIT TO DRILL OR REENTER

1a. Type of Work <input checked="" type="checkbox"/> DRILL <input type="checkbox"/> REENTER		5. Lease Serial No. <b>JTC-154</b>	
1b. Type of Well <input type="checkbox"/> Oil Well <input checked="" type="checkbox"/> Gas Well <input type="checkbox"/> Other <input type="checkbox"/> Single Zone <input checked="" type="checkbox"/> Multiple Zone		6. If Indian, Allottee or Tribe Name <b>JTCARILLA APACHE</b>	
2. Name of Operator <b>XTO Energy Inc.</b>		7. Unit or CA Agreement Name and No.	
3a. Address <b>2700 Farmington Ave., Bldg. K. Ste 1 Farmington, NM</b>		8. Lease Name and Well No. <b>JTCARILLA APACHE #12G</b>	
3b. Phone No. (include area code) <b>505-324-1090</b>		9. API Well No. <b>30-039-29654</b>	
4. Location of Well (Report location clearly and in accordance with any State requirements)* At surface <b>2000' ENL x 700' FEL</b> At proposed prod. zone		10. Field and Pool, or Exploratory <b>BASIN DAKOTA/BLANCO MESAVERDE</b>	
14. Distance in miles and direction from nearest town or post office* <b>Approx 71 miles from Bloomfield, NM Post Office</b>		11. Sec., T., R., M., or Blk. and Survey or Area <b>H SEC 33, T26N, R5W</b>	
15. Distance from proposed* location to nearest property or lease line, ft. (Also to nearest drg. unit line, if any) <b>Approx 3196'</b>		12. County or Parish <b>RIO ARriba</b>	
16. No. of Acres in lease <b>2560</b>		13. State <b>NM</b>	
17. Spacing Unit dedicated to this well <b>320 E/2</b>		18. Distance from proposed location* to nearest well, drilling, completed, applied for, on this lease, ft. <b>Approx 1075'</b>	
19. Proposed Depth <b>7620'</b>		20. BLM/BIA Bond No. on file	
21. Elevations (Show whether DF, KDB, RT, GL, etc.) <b>6554' GROUND ELEVATION</b>		22. Approximate date work will start* <b>WINTER 2005</b>	
23. Estimated duration <b>2 WEEKS</b>			

## 24. Attachments

The following, completed in accordance with the requirements of Onshore Oil and Gas Order No. 1, shall be attached to this form:

- Well plat certified by a registered surveyor.
- A Drilling Plan
- A Surface Use Plan (if the location is on National Forest System Lands, the SUPO shall be filed with the appropriate Forest Service Office).
- Bond to cover the operations unless covered by an existing bond on file (see Item 20 above).
- Operator certification.
- Such other site specific information and/or plans as may be required by the authorized officer.

25. Signature <i>Kyla Vaughan</i>	Name (Printed/Typed) <b>Kyla Vaughan</b>	Date <b>09/14/05</b>
Title <b>Regulatory Compliance Tech</b>		
Approved by (Signature) <i>D. Manke</i>	Name (Printed/Typed)	Date <b>1/6/06</b>
Title <b>AFM</b>	Office <b>FEO</b>	

Application approval does not warrant or certify that the applicant holds legal or equitable title to those rights in the subject lease which would entitle the applicant to conduct operations thereon.

Conditions of approval, if any, are attached.

Title 18 U.S.C. Section 1001 and Title 43 U.S.C. Section 1212, make it a crime for any person knowingly and willfully to make to any department or agency of the United States any false, fictitious or fraudulent statements or representations as to any matter within its jurisdiction.

\*(Instructions on page 2)

This action is subject to technical and procedural review pursuant to 43 CFR 3165.3 and appeal pursuant to 43 CFR 3165.4



NMCCD

DRILLING OPERATIONS AUTHORIZED ARE  
SUBJECT TO COMPLIANCE WITH ATTACHED  
"GENERAL REQUIREMENTS".

DISTRICT I  
1625 N. French Dr., Hobbs, N.M. 58240

DISTRICT II  
1301 W. Grand Ave., Artesia, N.M. 88210

DISTRICT III  
1000 Rio Brazos Rd., Aztec, N.M. 87410

DISTRICT IV  
1220 South St. Francis Dr., Santa Fe, NM 87505

State of New Mexico  
Energy, Minerals & Natural Resources Department.

**OIL CONSERVATION DIVISION**  
1220 South St. Francis Dr.  
Santa Fe, NM 87505

Form C-102  
Revised June 10, 2003

Submit to Appropriate District Office  
State Lease - 4 Copies  
Fee Lease - 3 Copies

RECEIVED  
070 FARMINGTON NM ☐ AMENDED REPORT

# WELL LOCATION AND ACREAGE DEDICATION PLAT

*API Number 30-039-29654		*Pool Code 71599	*Pool Name Basin Dakota
*Property Code 30320	*Property Name JICARILLA APACHE		*Well Number 12G
*OGRID No. V07067	*Operator Name XTO ENERGY INC.		*Elevation 6554

## 10 Surface Location

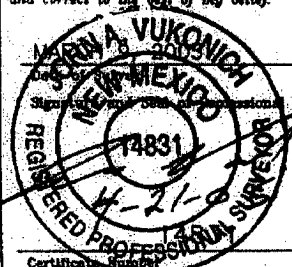
UL or lot no.	Section	Township	Range	Lot Idn	Feet from the	North/South line	Feet from the	East/West line	County
H	33	28-N	5-W		2000	NORTH	700	EAST	RIO ARRIBA

## 11 Bottom Hole Location If Different From Surface

UL or lot no.	Section	Township	Range	Lot Idn	Feet from the	North/South line	Feet from the	East/West line	County
---------------	---------	----------	-------	---------	---------------	------------------	---------------	----------------	--------

<sup>12</sup> Dedicated Acres 8/2 300	<sup>13</sup> Joint or Infill	<sup>14</sup> Consolidation Code	<sup>15</sup> Order No.
--	-------------------------------	----------------------------------	-------------------------

NO ALLOWABLE WILL BE ASSIGNED TO THIS COMPLETION UNTIL ALL INTERESTS HAVE BEEN CONSOLIDATED  
OR A NON-STANDARD UNIT HAS BEEN APPROVED BY THE DIVISION

CALC'D. CORNER BY PROJECTION	N 89-55-36 W 5309.6' (C)	CALC'D. CORNER BY PROJECTION	17 OPERATOR CERTIFICATION  I hereby certify that the information contained herein is true and complete to the best of my knowledge and belief.  <div style="border-bottom: 1px solid black; display: inline-block; width: 150px;"> <i>Kelly K. Small</i>  <small>Signature</small> </div>  Kelly K. Small Drilling Assistant Date: <i>5/19/05</i>
<div style="display: flex; justify-content: space-around; align-items: center;"> <div style="text-align: center;">             LAT: 36°26'41.6" N (NAD 27)              LONG: 107°21'26.1" W (NAD 27)           </div> <div style="text-align: center;">             2000'               700'           </div> </div> <div style="display: flex; justify-content: center; align-items: center; margin-top: 20px;"> <span style="font-size: 2em; margin-right: 10px;">33</span> <div style="writing-mode: vertical-rl; transform: rotate(180deg); text-align: center;">             S 00-17-47 W 5196.0' (C)           </div> </div>			18 SURVEYOR CERTIFICATION  I hereby certify that the well location shown on this plat was plotted from field notes of actual surveys made by me or under my supervision, and that the same is true and correct to the best of my belief.  <div style="text-align: center;">  </div>
CALC'D. CORNER BY SINGLE PROP.			Certificate Number:

DISTRICT I  
1625 N. French Dr., Hobbs, N.M. 88240

DISTRICT II  
1301 W. Grand Ave., Artesia, N.M. 88210

DISTRICT III  
1000 Rio Brazos Rd., Aztec, N.M. 87410

DISTRICT IV  
1220 South St. Francis Dr., Santa Fe, NM 87505

State of New Mexico  
Energy, Minerals & Natural Resources Department

OIL CONSERVATION DIVISION

1220 South St. Francis Dr.

Santa Fe, NM 87505

Form C-102  
Revised June 10, 2003

Submit to Appropriate District Office  
State Lease - 4 Copies  
Fee Lease - 3 Copies

070 FARMINGTON NH

☐ AMENDED REPORT

WELL LOCATION AND ACREAGE DEDICATION PLAT

*API Number 30-039-29654	*Pool Code 72319	*Pool Name Blanco Mesaverde
*Property Code 30320	*Property Name JICARILLA APACHE	*Well Number 12G
*OGRID No. 1107067	*Operator Name XTO ENERGY INC.	*Elevation 6554

## <sup>10</sup> Surface Location

UL or lot no.	Section	Township	Range	Lot Idn	Feet from the	North/South line	Feet from the	East/West line	County
H	33	26-N	5-W		2000	NORTH	700	EAST	RIO ARriba

## 11 Bottom Hole Location If Different From Surface

UL or lot no.	Section	Township	Range	Lot Idn	Feet from the	North/South line	Feet from the	East/West line	County
<sup>23</sup> Dedicated Acres E 1/2 337			<sup>24</sup> Joint or Infill		<sup>25</sup> Consolidation Code		<sup>26</sup> Order No.		

NO ALLOWABLE WILL BE ASSIGNED TO THIS COMPLETION UNTIL ALL INTERESTS HAVE BEEN CONSOLIDATED  
OR A NON-STANDARD UNIT HAS BEEN APPROVED BY THE DIVISION

Submit 3 Copies To Appropriate District  
Office

**District I**

1625 N. French Dr., Hobbs, NM 87240

**District II**

1301 W. Grand Ave., Artesia, NM 88210

**District III**

1000 Rio Brazos Rd., Aztec, NM 87410

**District IV**

1220 S. St. Francis Dr., Santa Fe, NM 87505

State of New Mexico  
Energy, Minerals and Natural Resources

OIL CONSERVATION DIVISION  
1220 South St. Francis Dr.  
Santa Fe, NM 87505

Form C-103

May 27, 2004

WELL API NO.

30-039-29654

5. Indicate Type of Lease

STATE ☐ FEE ☐

6. State Oil & Gas Lease No.

JIC-154

7. Lease Name or Unit Agreement Name:

JICARILLA APACHE

8. Well Number

#12G

9. OGRID Number

167067

10. Pool name or Wildcat

BASIN DAKOTA/BLANCO MESAVERDE

**SUNDRY NOTICES AND REPORTS ON WELLS**

(DO NOT USE THIS FORM FOR PROPOSALS TO DRILL OR TO DEEPEN OR PLUG BACK TO A DIFFERENT RESERVOIR. USE "APPLICATION FOR PERMIT" (FORM C-101) FOR SUCH PROPOSALS.)

1. Type of Well:

Oil Well ☐ Gas Well ☒ Other

2. Name of Operator

XTO Energy Inc.

3. Address of Operator

2700 Farmington Ave., Bldg. K. Ste 1 Farmington, NM 87401

4. Well Location

Unit Letter H : 2000 feet from the NORTH line and 700 feet from the EAST line

Section 33 Township 26N Range 5W NMPM County SAN JUAN

11. Elevation (Show whether DR, RKB, RT, GR, etc.)

6554'

Pit or Below-grade Tank Application ☒ or Closure ☐

Pit type DRILL Depth to Groundwater >100' Distance from nearest fresh water well >1000' Distance from nearest surface water >2000'

Pit Liner Thickness: 12 mil Below-Grade Tank: Volume \_\_\_\_\_ bbls; Construction Material \_\_\_\_\_

12. Check Appropriate Box to Indicate Nature of Notice, Report, or Other Data

**NOTICE OF INTENTION TO:**

PERFORM REMEDIAL WORK ☐ PLUG AND ABANDON ☐

TEMPORARILY ABANDON ☐ CHANGE PLANS ☐

PULL OR ALTER CASING ☐ MULTIPLE COMPLETION ☐

OTHER: PIT FOR NEW DRILL ☒

**SUBSEQUENT REPORT OF:**

REMEDIAL WORK ☐ ALTERING CASING ☐

COMMENCE DRILLING OPNS. ☐ PLUG AND ABANDONMENT ☐

CASING TEST AND CEMENT JOB ☐

OTHER: ☐

13. Describe proposed or completed operations. (Clearly state all pertinent details, and give pertinent dates, including estimated date of starting any proposed work). SEE RULE 1103. For Multiple Completions: Attach wellbore diagram of proposed completion or recompletion.

XTO Energy Inc. plans to install a pit on location for drilling. The pit will be removed from location in accordance with New Mexico Oil Conservation division guidelines when work is completed.

I hereby certify that the information above is true and complete to the best of my knowledge and belief. I further certify that any pit or below-grade tank has been/will be constructed or closed according to NMOCD guidelines ☐ , a general permit ☐ or an (attached) alternative OCD-approved plan ☐

SIGNATURE Kyla Vaughan TITLE REGULATORY COMPLIANCE TECH DATE 09/14/05

Type or print name Kyla Vaughan

E-mail address:

Telephone No. 505-564-6726

For State Use Only

APPROVED BY [Signature] DEPUTY OIL & GAS INSPECTOR, DIST. 4 DATE JAN 12 2006

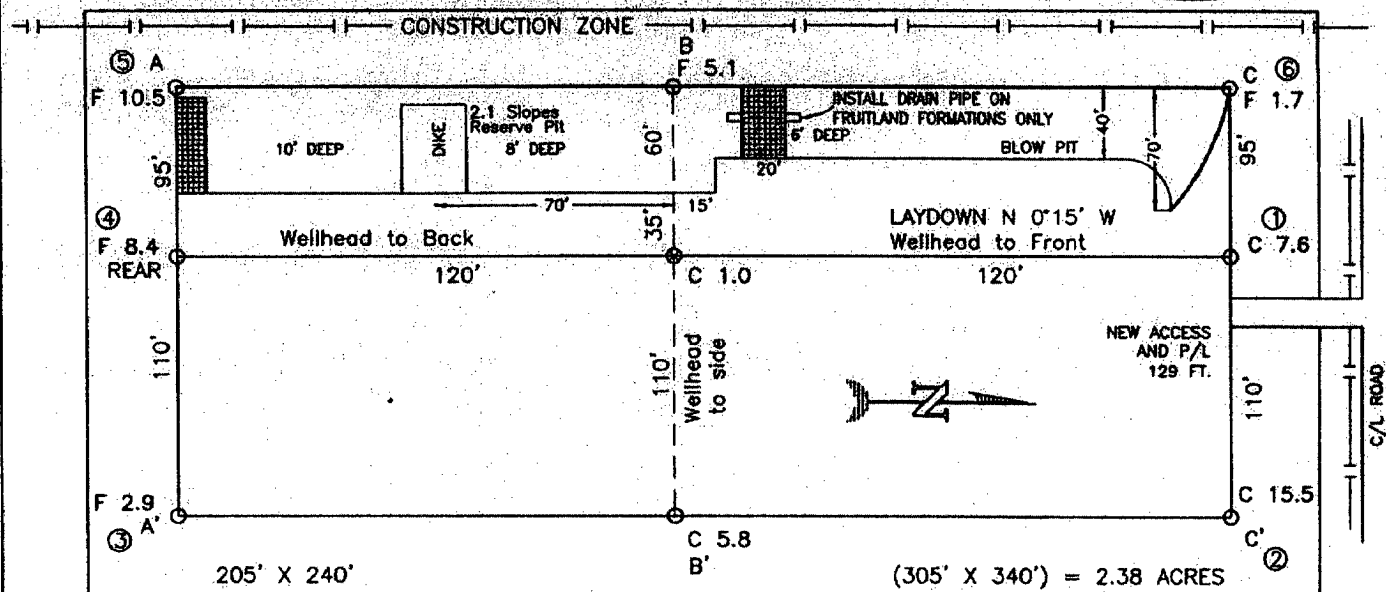
Conditions of Approval, if any:

EXHIBIT D

EXHIBIT D EXHIBIT

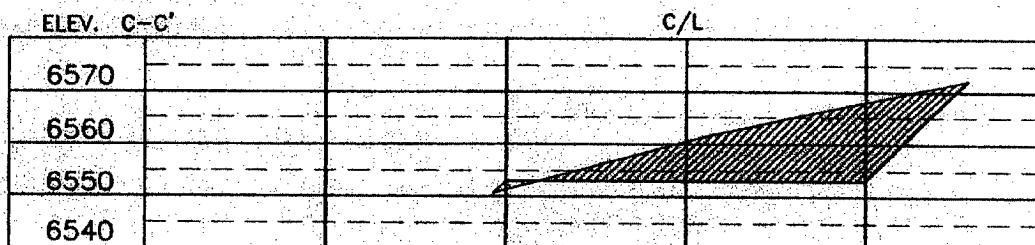
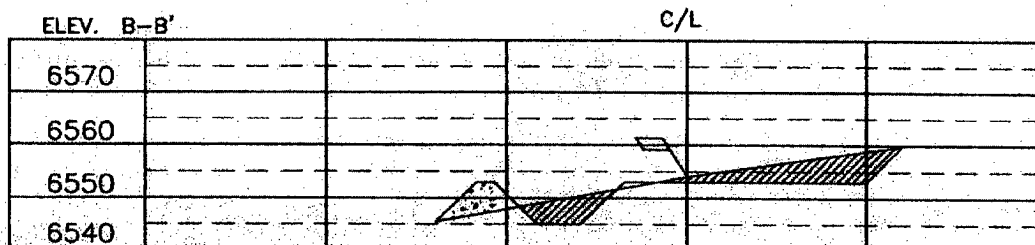
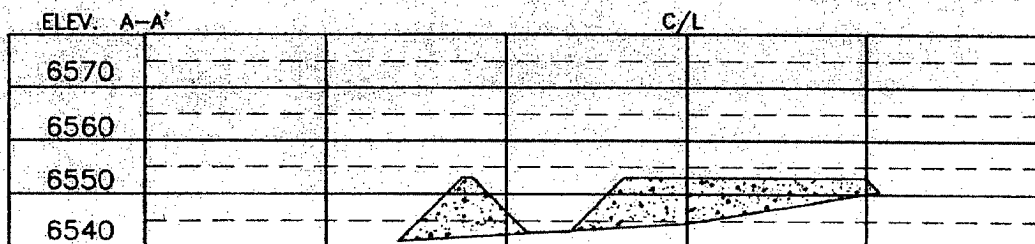
XTO ENERGY INC.  
 JICARILLA APACHE No. 12G, 2000' FNL 700' FEL  
 SECTION 33, T26N, R5W, N.M.P.M., RIO ARRIBA COUNTY, N. M.  
 GROUND ELEVATION: 6554', DATE: MARCH 9, 2005

LAT. = 36°26'41.8" N.  
 LONG. = 107°21'26.1" W  
 NAD 27



RESERVE PIT DIKE: TO BE 8' ABOVE DEEP SIDE (OVERFLOW - 3' WIDE AND 1' ABOVE SHALLOW SIDE).  
 BLOW PIT: OVERFLOW PIPE HALFWAY BETWEEN TOP AND BOTTOM AND TO EXTEND OVER PLASTIC LINER AND INTO BLOW PIT.

NOTE: DAGGETT ENTERPRISES, INC. IS NOT LIABLE FOR UNDERGROUND UTILITIES OR PIPELINES. NEW MEXICO ONE CALL TO BE NOTIFIED 48 HOURS PRIOR TO EXCAVATION OR CONSTRUCTION.



NOTE: CONTRACTOR SHOULD CALL ONE-CALL FOR LOCATION OF ANY MARKED OR UNMARKED BURIED PIPELINES OR CABLES ON WELL PAD AND OR ACCESS ROAD AT LEAST TWO (2) WORKING DAYS PRIOR TO CONSTRUCTION.

REVISION	DATE	REVISION BY

**Daggett Enterprises, Inc.**  
 Surveying and Oil Field Services  
 P. O. Box 15068 · Farmington, NM 87401  
 Phone (505) 336-1772 · Fax (505) 336-6019  
 NEW MEXICO P.L.S. No. 14831  
 BUREAU CR442 OFS  
 DATE 04/18/05

Drawn by: G.V.  
 Rev'd CR442

# XTO ENERGY INC.

Jicarilla Apache #12G

APD Data

September 7, 2005

Location: 2000' FNL x 700' FEL Sec 33, T26N, R5W

County: San Juan

State: New Mexico

GREATEST PROJECTED TD: 7620'  
APPROX GR ELEV: 6554'

OBJECTIVE: Basin Dakota / Blanco Mesaverde  
Est KB ELEV: 6566' (12' AGL)

## 1. MUD PROGRAM:

INTERVAL	0' to 360'	360' to 2500'	2500' to 7620
HOLE SIZE	12.25"	7.875"	7.875"
MUD TYPE	FW/Spud Mud	FW/Polymer	LSND / Gel Chemical
WEIGHT	8.6-9.0	8.4-8.8	8.6- 9.20
VISCOSITY	28-32	28-32	45-60
WATER LOSS	NC	NC	8-10

Remarks: Use fibrous materials as needed to control seepage and lost circulation. Pump high viscosity sweeps as needed for hole cleaning. Raise viscosity at TD for logging. Reduce viscosity after logging for cementing purposes.

## 2. CASING PROGRAM:

Surface Casing: 8.625" casing to be set at  $\pm 360'$  in a 12-1/4" hole filled with 9.20 ppg mud

Interval	Length	Wt	Gr	Cplg	Coll Rating (psi)	Burst Rating (psi)	Jt Str (M-lbs)	ID (in)	Drift (in)	SF Coll	SF Burst	SF Ten
0'-360'	360'	24.0#	J-55	ST&C	1370	2950	244	8.097	7.972	7.950	17.13	28.24

Production Casing: 5.5" casing to be set at TD ( $\pm 7620'$ ) in 7-7/8" hole filled with 9.20 ppg mud.

Interval	Length	Wt	Gr	Cplg	Coll Rating (psi)	Burst Rating (psi)	Jt Str (M-lbs)	ID (in)	Drift (in)	SF Coll	SF Burst	SF Ten
0'-7620	7620'	17.0#	J-55	LT&C	4910	5320	247	4.892	4.767	1.35	1.46	1.91

## 3. WELLHEAD:

- Casing Head: Larkin Fig 92 (or equivalent), 9" nominal, 2,000 psig WP (4,000 psig test) with 8-5/8" 8rnd thread on bottom and 11-3/4" 8rnd thread on top.
- Tubing Head: Larkin Fig 612 (or equivalent), 6.456" nominal, 2,000 psig WP (4,000 psig test), 5-1/2" 8rnd female thread on bottom (or slip-on, weld-on), 8-5/8" 8rnd thread on top.

EXHIBIT F

**4. CEMENT PROGRAM (Slurry design may change slightly, but the plan is to circulate cement to surface on both casing strings):**

A. Surface: 8.625", 24.0#, J-55, ST&C casing to be set at  $\pm 360'$  in 12-1/4" hole.

214 sx of Type III cement (or equivalent) typically containing accelerator and LCM, mixed at 14.5 ppg, 1.39 ft<sup>3</sup>/sk, & 6.70 gal wtr/sk.

*Total slurry volume is 297 ft<sup>3</sup>, 100% excess of calculated annular volume to 360'.*

B. Production: 5.5", 17.0#, J-55 (or K-55), LT&C casing to be set at  $\pm 7620'$  in 7.875" hole. DV Tool set @  $\pm 4575'$

1<sup>st</sup> Stage

LEAD:

$\pm 253$  sx of Premium Lite HS (Type III/Poz/Gel) with 2% salt, 1/4 pps cello, 0.2% dispersant, 0.5% fluid loss & 2% LCM mixed at 12.5 ppg, 2.01 ft<sup>3</sup>/sk, 10.55 gal wtr/sx.

TAIL:

150 sx Type III with 5% bonding additive, 1/4 pps cello, 2% LCM, 0.3% dispersant & 0.2% fluid loss mixed at 14.2 ppg, 1.54 cuft/sx, 8.00 gal/sx.

2<sup>nd</sup> Stage

LEAD:

$\pm 386$  sx of Type III with 8% gel, 1/4 pps cello & 2% LCM mixed at 11.9 ppg, 2.54 ft<sup>3</sup>/sk, 15.00 gal wtr/sx.

TAIL:

100 sx Type III neat mixed at 14.5 ppg, 1.39 cuft/sx, 6.3 gal/sx.

*Total estimated slurry volume for the 5-1/2" production casing is 1858 ft<sup>3</sup>.*

*Note: The slurry design may change slightly based upon actual conditions. Final cement volumes will be determined from the caliper logs plus 40%. It will be attempted to circulate cement to the surface.*

**5. LOGGING PROGRAM:**

A. Mud Logger: The mud logger will come on at 2,900' and will remain on the hole until TD. The mud will be logged in 10' intervals.

B. Open Hole Logs as follows: Run Array Induction/SFL/GR/SP fr/TD (7620') to the bottom of the surface csg. Run Neutron/Lithodensity/Pe/GR/Cal from TD (7620') to 3,000'.

6. **FORMATION TOPS:**

Est. KB Elevation: 6566'

FORMATION	Sub-Sea Elev.	WELL DEPTH	FORMATION	Sub-Sea Elev.	WELL DEPTH
Ojo Alamo SS	4207	2,359	Gallup Ss	425	6,141
Kirtland Shale	4067	2,499	Greenhorn Ls	-435	7,001
Farmington SS			Graneros Sh	-489	7,055
Fruitland Formation	3961	2,605	1 <sup>ST</sup> Dakota Ss*	-515	7,081
Lower Fruitland Coal	3763	2,803	2 <sup>ND</sup> Dakota Ss*	-536	7,102
Pictured Cliffs SS	3687	2,879	3 <sup>RD</sup> Dakota Ss*	-611	7,177
Lewis Shale	3489	3,077	4 <sup>TH</sup> Dakota Ss*	-649	7,215
Chacra SS	2794	3,772	5 <sup>TH</sup> Dakota Ss*	-683	7,249
Cliffhouse SS	2027	4,539	6 <sup>TH</sup> Dakota Ss*	-734	7,300
Menefee	1981	4,585	Burro Canyon Ss*	-764	7,330
Point Lookout SS**	1460	5,106	Morrison Fm**	-870	7,436
Mancos Shale	1118	5,448	<b>Total Depth</b>	-1054	<b>7,620</b>

\* Primary Objective    \*\* Secondary Objective

\*\*\*\* Maximum anticipated BHP should be <2,000 psig ( <0.30 psi/ft) \*\*\*\*\*

7. **COMPANY PERSONNEL:**

Name	Title	Office Phone	Home Phone
Jeff Patton	Drilling Engineer	505-324-1090	505-632-7882
John Egelston	Drilling Engineer	505-564-6734	505-330-6902
Dennis Elrod	Drilling foreman	505-486-6460	505-326-2024
Red Meek	Project Geologist	817-885-2800	817-427-2475
Barry Voigt	Reservoir Engineer	817-885-2462	817-540-2092

JWP  
9/7/05

**EXHIBIT F**



# BOP SCHEMATIC FOR DRILLING OPERATIONS CLASS 1 (2M) NORMAL PRESSURE

## TESTING PROCEDURE

### 1. Test BOP after installation:

Pressure test BOP to 200-300  
psig (low pressure) for ~~5~~<sup>10</sup> min.

Test BOP to Working Press or  
to 70% internal yield of surf csg  
(10 min) or which ever is less.

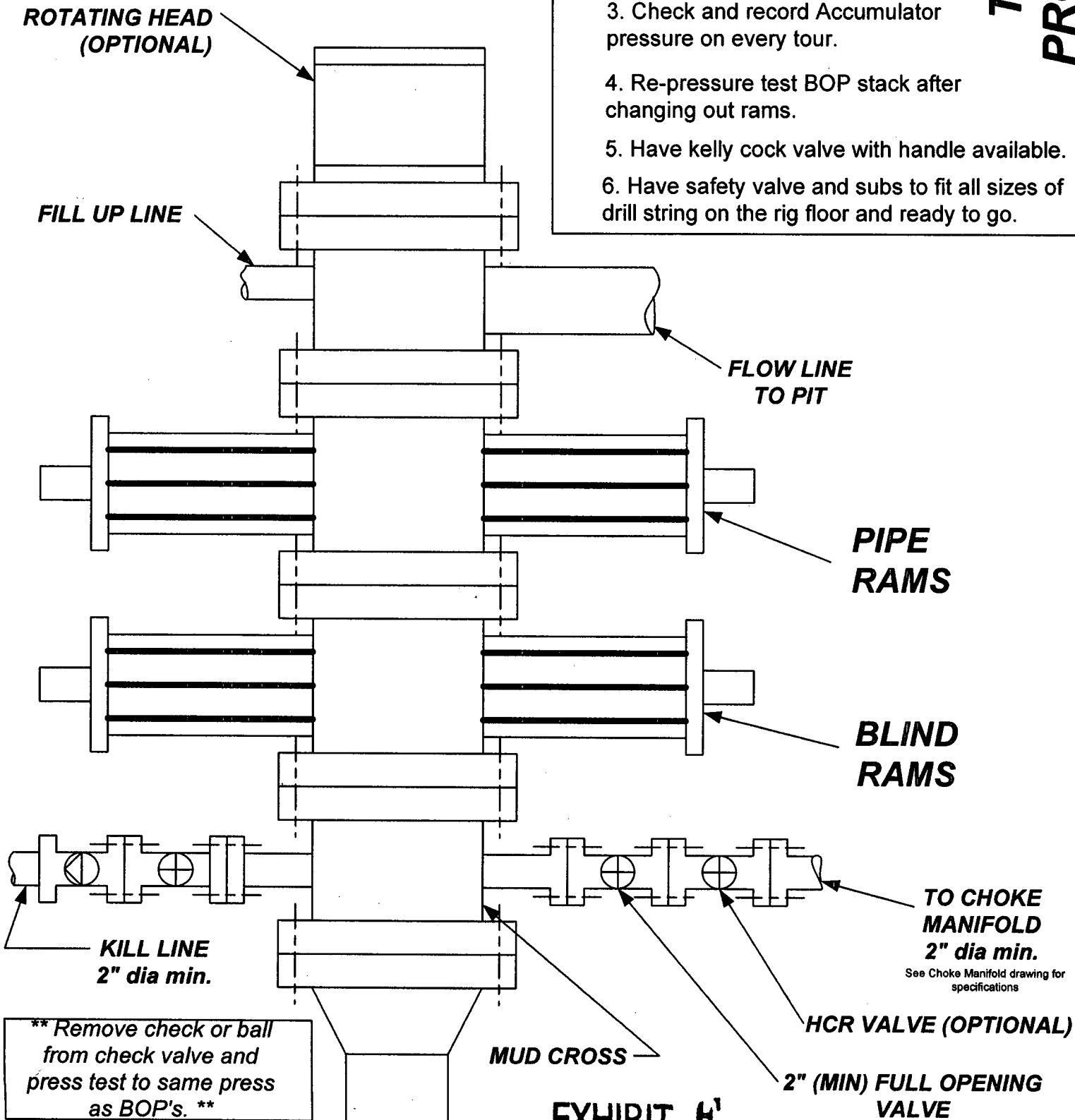
### 2. Test operation of (both) rams on every trip.

### 3. Check and record Accumulator pressure on every tour.

### 4. Re-pressure test BOP stack after changing out rams.

### 5. Have kelly cock valve with handle available.

### 6. Have safety valve and subs to fit all sizes of drill string on the rig floor and ready to go.



**EXHIBIT F'**

# **CHOKE MANIFOLD SCHEMATIC FOR DRILLING OPERATIONS CLASS 1 (2M) NORMAL PRESSURE**

1. Stake all lines from choke manifold to pit.
2. Pressure test choke manifold after installation.
3. Pressure test manifold at the same time with the BOP Stack. Test manifold to the same test pressures.

## **TESTING PROCEDURE**

