

UNITED STATES
DEPARTMENT OF THE INTERIOR
BUREAU OF LAND MANAGEMENT

RECEIVED

APPLICATION FOR PERMIT TO DRILL, DEEPEN, OR PLUG BACK

2001 OCT -5 PM 4: 25

1a. Type of Work DRILL	5. Lease Number SF-080430 Unit Reporting Number 891001051A
1b. Type of Well GAS	6. If Indian, All. or Tribe
2. Operator BURLINGTON RESOURCES Oil & Gas Company	7. Unit Agreement Name San Juan 28-6 Unit
3. Address & Phone No. of Operator PO Box 4289, Farmington, NM 87499 (505) 326-9700	8. Farm or Lease Name San Juan 28-6 Unit 7462 9. Well Number 225
4. Location of Well 1455' FSL, 770' FEL, Latitude 36° 40.3, Longitude 107° 30.1	10. Field, Pool, Wildcat So Blanco Pict Cliffs 11. Sec., Twn, Rge, Mer. (NMPM) 1/1 Sec. 7, T-28-N, R-6-W API # 30-039-20832
14. Distance in Miles from Nearest Town 10 miles from Gobernador	12. County Rio Arriba
15. Distance from Proposed Location to Nearest Property or Lease Line 770'	13. State NM
16. Acres in Lease	17. Acres Assigned to Well 142.71
18. Distance from Proposed Location to Nearest Well, Drig, Compl, or Applied for on this Lease 75'	
19. Proposed Depth 3980'	20. Rotary or Cable Tools Rotary
21. Elevations (DF, FT, GR, Etc.) 6825' GR	22. Approx. Date Work will Start
23. Proposed Casing and Cementing Program See Operations Plan attached	DRILLING OPERATIONS AUTHORIZED ARE SUBJECT TO COMPLIANCE WITH ATTACHED "GENERAL REQUIREMENTS"
24. Authorized by: <u>[Signature]</u> Regulatory/Compliance Supervisor	<u>9-13-01</u> Date

PERMIT NO. _____ APPROVAL DATE _____
APPROVED BY [Signature] TITLE Acting AFM DATE 1/17/06

Archaeological Report to be submitted

Threatened and Endangered Species Report to be submitted

NOTE: This format is issued in lieu of U.S. BLM Form 3160-3

Title 18 U.S.C. Section 1001, makes it a crime for any person knowingly and willfully to make to any department or agency of the United States any false, fictitious or fraudulent statements or presentations as to any matter within its jurisdiction.

NMOCD

District I
PO Box 1980, Hobbs, NM 88241-1980

District II
PO Drawer 00, Artesia, NM 88211-0719

District III
1000 Rio Brazos Rd., Aztec, NM 87410

District IV
PO Box 2088, Santa Fe, NM 87504-2088

State of New Mexico
Energy, Minerals & Natural Resources Department

OIL CONSERVATION DIVISION
PO Box 2088
Santa Fe, NM 87504-2088

Form C-102
Revised February 21, 1994
Instructions on back
Submit to Appropriate District Office
State Lease - 4 Copies
Fee Lease - 3 Copies

☐ AMENDED REPORT

WELL LOCATION AND ACREAGE DEDICATION PLAT

*API Number 30-039- 26832		*Pool Code 72439	*Pool Name South Blanco Pictured Cliffs ✓
*Property Code 7462	*Property Name SAN JUAN 28-6 UNIT ✓		*Well Number 225 ✓
*GRID No. 14538	*Operator Name BURLINGTON RESOURCES OIL & GAS COMPANY LP		*Elevation 6825' ✓

¹⁰ Surface Location

UL or lot no.	Section	Township	Range	Lot Idh	Feet from the	North/South line	Feet from the	East/West line	County
I	7	28N	6W	1	1455	SOUTH	770	EAST	RIO ARriba ✓

¹¹ Bottom Hole Location If Different From Surface

UL or lot no.	Section	Township	Range	Lot Idh	Feet from the	North/South line	Feet from the	East/West line	County

¹² Dedicated Acres 142.71	¹³ Joint or Infill	¹⁴ Consolidation Code	¹⁵ Order No.
---	-------------------------------	----------------------------------	-------------------------

NO ALLOWABLE WILL BE ASSIGNED TO THIS COMPLETION UNTIL ALL INTERESTS HAVE BEEN CONSOLIDATED OR A NON-STANDARD UNIT HAS BEEN APPROVED BY THE DIVISION

¹⁷ OPERATOR CERTIFICATION

I hereby certify that the information contained herein is true and complete to the best of my knowledge and belief

Peggy Cole
Signature

Peggy Cole
Printed Name
Regulatory Supervisor
Title

4-13-01
Date

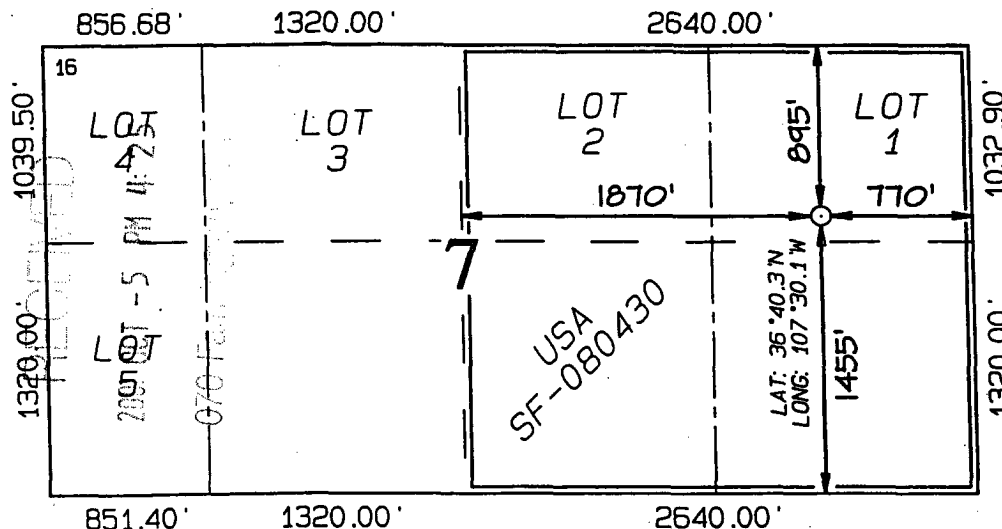
¹⁸ SURVEYOR CERTIFICATION

I hereby certify that the well location shown on this plat was plotted from field notes of actual surveys made by or under my supervision, and that the same is true and correct to the best of my belief.

JUNE 16, 2001

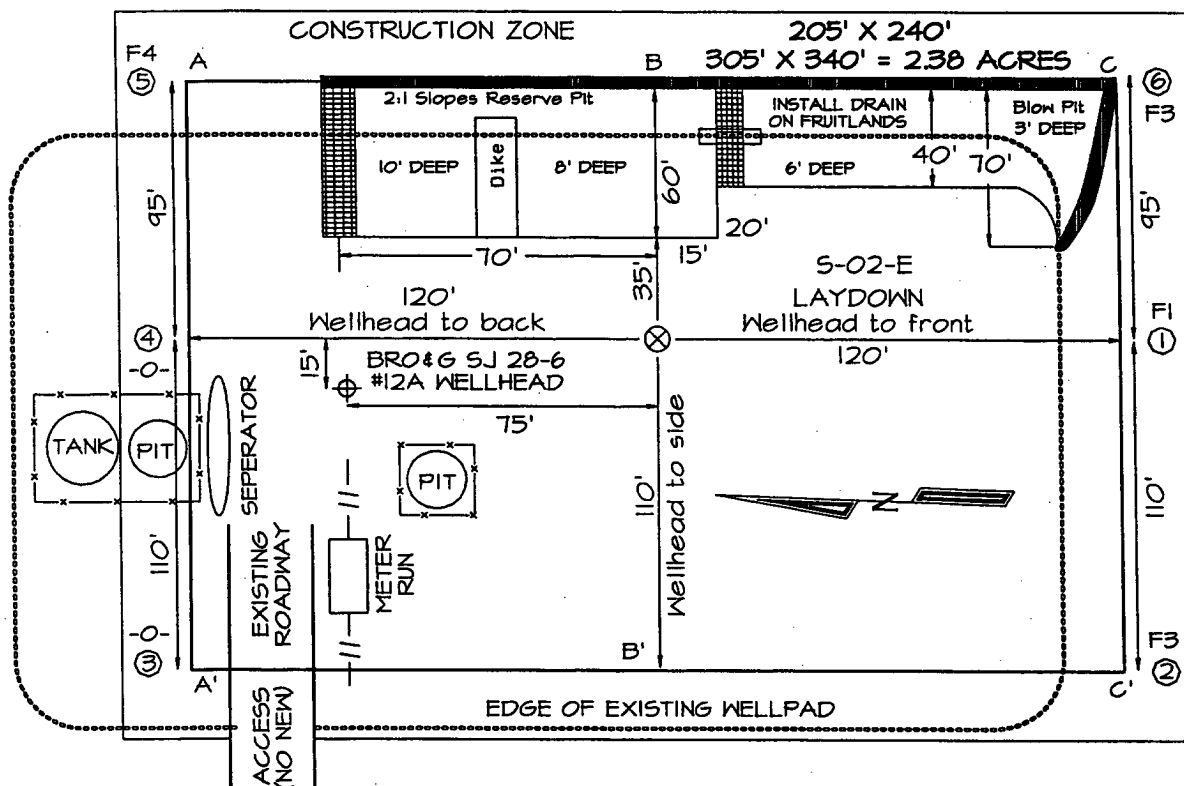
Date of Survey

Signature and Seal of Surveyor



BURLINGTON RESOURCES OIL & GAS COMPANY LP
SAN JUAN 28-6 UNIT #225, 1455' FSL & 770' FEL
SECTION 7, T28N, R6W, NMPM, RIO ARriba COUNTY, NM
GROUND ELEVATION: 6825' DATE: JUNE 16, 2001

LATITUDE: 36°40'21"
LONGITUDE: 107°30'05"
 DATUM: NAD1927



Reserve Pit DiKE: to be 8' above Deep side (overflow - 3' wide and 1' above shallow side).
 Blow Pit: overflow pipe halfway between top and bottom and to extend over plastic liner and into blow pit.

A-A'						
6835'						
6825'						
6815'						

B-B'						
6835'						
6825'						
6815'						

C-C'						
6835'						
6825'						
6815'						

Note: Contractor should call One-Call for location of any marked or unmarked buried pipelines or cables on well pad and/or access road at least two (2) working days prior to construction.

OPERATIONS PLAN

Well Name: San Juan 28-6 Unit #225
Location: 1445' FSL, 770' FEL, Section 7, T-28-N, R-6-W
Rio Arriba County, New Mexico
Latitude 36° 40.3, Longitude 107° 30.1
Formation: South Blanco Pictured Cliffs
Elevation: 6825' GL

Formation:	Top	Bottom	Contents
Surface	San Jose	2757'	
Ojo Alamo	2757'	2927'	aquifer
Kirtland	2927'	3440'	gas
Fruitland	3440'	3682'	gas
Pictured Cliffs	3682'		gas
Total Depth	3980'		

Logging Program:

Open hole - Surface to TD - ARI, 2920' to TD - CNL-CDL
Cased hole - Surface to TD - CBL-CCL-GR

Coring Program: None

Mud Program:

<u>Interval</u>	<u>Type</u>	<u>Weight</u>	<u>Vis.</u>	<u>Fluid Loss</u>
0- 120'	Spud	8.4-9.0	40-50	no control
120-3980'	FW	8.4-9.0	32-45	no control

Casing Program (as listed, equivalent, or better):

<u>Hole Size</u>	<u>Depth Interval</u>	<u>Csg. Size</u>	<u>Wt.</u>	<u>Grade</u>
9 7/8"	0 - 120'	7"	20.0#	J-55
6 1/4"	0 - 3980'	2 7/8"	6.5#	J-55

Float Equipment: 7" surface casing - saw tooth guide shoe.
Centralizers will be run in accordance with Onshore Order #2.

2 7/8" production casing - float shoe on bottom. Three centralizers run every other joint above shoe. Seven centralizers run every 3rd joint to the base of the Ojo Alamo @ 2927'. Two turbolizing type centralizers - one below and one into the base of the Ojo Alamo @ 2927'. Standard centralizers thereafter every fourth joint up to the base of the surface pipe.

Wellhead Equipment: 7" x 2 7/8" 2000 psi screw on independent wellhead.

Cementing:

7" surface casing - cement with 27 sx Class A, B Portland Type I, II cement (32 cu.ft. of slurry, bring cement to surface through 3/4" line).
WOC 8 hrs. Test casing to 600 psi for 30 minutes.

2 7/8" production casing - Lead w/569 sx Premium Lite cement w/3% calcium chloride, 1/4 pps Flocele, 5 pps LCM-1, 0.4% FL-52, 0.4% SMS. Tail w/90 sx Type III cement w/1% calcium chloride, 1/4 pps Flocele, and 0.2% FL-52 (1337 cu.ft. of slurry, 100% excess to circulate to surface).

Note: If open hole logs are run, cement volumes will be based on 25% excess over caliper volumes.

BOP and tests:

Surface to TD - 11" 2000 psi (minimum double gate BOP stack (Reference Figure #1). Prior to drilling out surface casing, test rams to 600 psi/30 min.

Completion - 6" 2000 psi (minimum) double gate BOP stack (Reference Figure #2). Prior to completion operations, test rams and casing to 2000 psi/15 min.

From surface to TD - choke manifold (Reference Figure #3).

Pipe rams will be actuated to least once each day and blind rams actuated once each trip to test proper functioning. An upper kelly cock valve with handle and drill string safety valves to fit each drill string will be maintained and available on the rig floor.

BOP and tests (if a coiled tubing drilling rig is utilized):

Surface to TD: 7 1/16" 2000 psi (minimum) Torus annular BOP stack (Reference Figure #1B). Prior to drilling out surface casing, test annular BOP to 600 psi/30 minutes.

Completion: 7 1/16" 2000 psi (minimum) double gate BOP stack (Reference Figure #2). Prior to completion operations, test blind rams and casing to 1500 psi/30 minutes; all pipe rams and casing to 1500 psi/30 minutes each.

From surface to TD: choke manifold (Reference Figure #3).

The annular BOP will be actuated to close on drill pipe (coiled tubing) at least once each day and to close on open hole once each trip to test proper functioning.

Additional information:

- * The Pictured Cliffs formation will be completed.
- * Anticipated pore pressure for the Pictured Cliffs is 500 psi.
- * This gas is dedicated.
- * The southeast quarter of Section 7 is dedicated to the Pictured Cliffs.

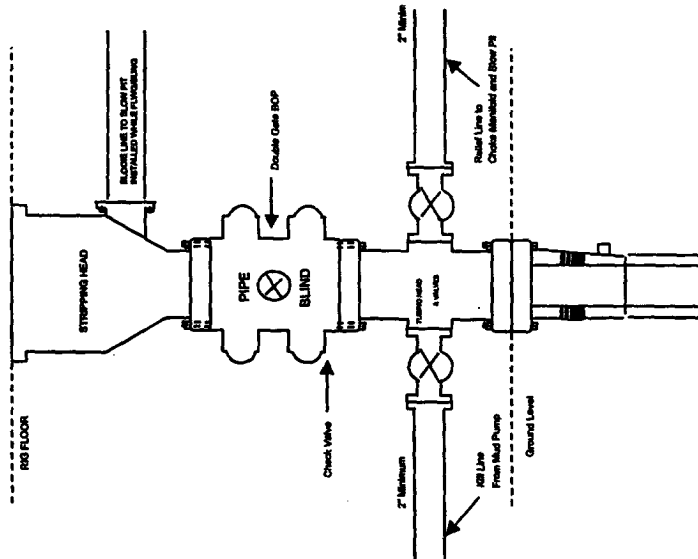


Drilling Engineer

10/4/01

Date

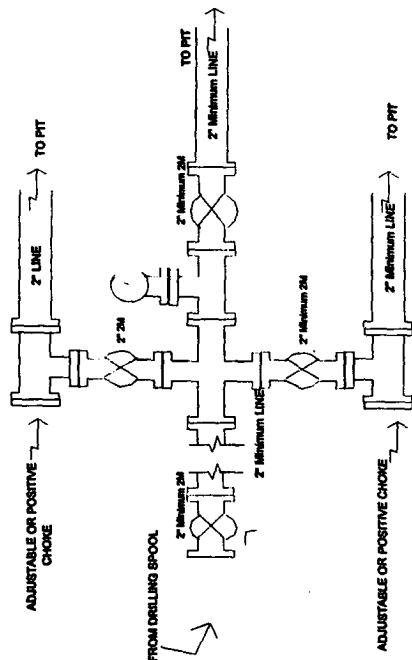
Completion/Workover Rig
BOP Configuration
2,000 psi System



Minimum BOP Installation for all Completion/Workover Operations. 7-1/16" bore, 2000 psi minimum working pressure double gate BOP to be equipped with blind and pipe rams. A stripping head to be installed on the top of the BOP. All BOP equipment is 2000 psi working pressure or greater excluding 500 psi stripping head.

Figure #2

Drilling Rig
Choke Manifold Configuration
2000 psi System

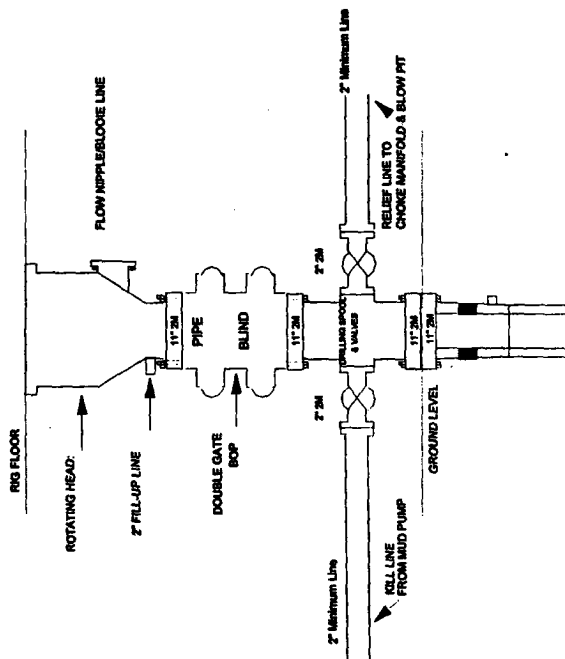


Choke manifold Installation from Surface Casing Point to Total Depth. 2,000psi working pressure equipment with two chokes.

Figure #3

4-20-01

Drilling Rig
2000 psi System



BOP Installation from Surface Casing Point to Total Depth. 11" Bore 10" Nominal, 2000 psi working pressure double gate BOP to be equipped with blind rams and pipe rams. A 500 psi rotating head on top of ram preventers. All BOP equipment is 2,000 psi working pressure

Figure #1

4-20-01

Figure #1b:

