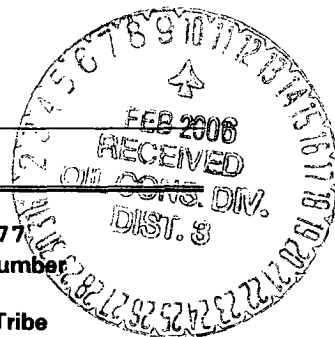


UNITED STATES
DEPARTMENT OF THE INTERIOR
BUREAU OF LAND MANAGEMENT

APPLICATION FOR PERMIT TO DRILL, DEEPEN, OR PLUG BACK



1a. Type of Work DRILL	5. Lease Number NMNM-03877
1b. Type of Well GAS	Unit Reporting Number
2. Operator BURLINGTON RESOURCES Oil & Gas Company, LP 14538	6. If Indian, All. or Tribe
3. Address & Phone No. of Operator PO Box 4289, Farmington, NM 87499 (505) 326-9700	7. Unit Agreement Name
4. Location of Well Unit P (SESE), 945' FSL & 800' FEL, Latitude 36° 44.1324'N Longitude 108° 00.4910'W	8. Farm or Lease Name Fogelson 8 7027 9. Well Number 1008 10. Field, Pool, Wildcat Basin FC/Bloomfield FS and Flucher Kutz PC 11. Sec., Twn, Rge, Mer. (NMPM) Sec. 8, T29N, R11W API # 30-045-33541
14. Distance in Miles from Nearest Town	12. County San Juan 13. State NM
15. Distance from Proposed Location to Nearest Property or Lease Line 800'	17. Acres Assigned to Well FC - 320 E/2; PC&FS-160 SE/4
16. Acres in Lease	
18. Distance from Proposed Location to Nearest Well, Drig, Compl, or Applied for on this Lease Twinned w/Duff #7 (P&A)	
19. Proposed Depth 2075'	20. Rotary or Cable Tools Rotary
21. Elevations (DF, FT, GR, Etc.) 5676' GL	22. Approx. Date Work will Start
23. Proposed Casing and Cementing Program See Operations Plan attached	
24. Authorized by: <u>Pakey Clugston</u> Sr. Regulatory Specialist	Date <u>1/19/06</u>

PERMIT NO.

APPROVAL DATE

APPROVED BY

TITLE

DATE

Archaeological Report attached

Threatened and Endangered Species Report attached

NOTE: This format is issued in lieu of U.S. BLM Form 3160-3

Title 18 U.S.C. Section 1001, makes it a crime for any person knowingly and willfully to make to any department or agency of the United States any false, fictitious or fraudulent statements or presentations as to any matter within its jurisdiction.

Not an HPA FC Well

NMOCD

DISTRICT I
1625 N. French Dr., Hobbs, N.M. 88240

DISTRICT II
1301 W. Grand Ave., Artesia, N.M. 88210

DISTRICT III
1000 Rio Brazos Rd., Aztec, N.M. 87410

DISTRICT IV
1220 South St. Francis Dr., Santa Fe, NM 87505

State of New Mexico
Energy, Minerals & Natural Resources Department

OIL CONSERVATION DIVISION

1220 South St. Francis Dr.
Santa Fe, NM 87505

Form C-102

Revised June 10, 2003

Submit to Appropriate District Office

State Lease - 4 Copies

Fee Lease - 3 Copies

2006 JAN 20 PM 3 24

☐ AMENDED REPORT

WELL LOCATION AND ACREAGE DEDICATION PLAT

AStec Fruitland

¹ API Number 30-045-33541	² Pool Code 71629 / 71200	³ Pool Name PC-Fulcher Kutz PC
⁴ Property Code 7027	⁵ Property Name FOGELSON 8	⁶ Well Number 100S
⁷ GRID No. 14538	⁸ Operator Name BURLINGTON RESOURCES OIL & GAS COMPANY LP	⁹ Elevation 5676

¹⁰ Surface Location

UL or lot no.	Section	Township	Range	Lot Idn	Feet from the	North/South line	Feet from the	East/West line	County
P	8	29-N	11-W		945	SOUTH	800	EAST	SAN JUAN

¹¹ Bottom Hole Location If Different From Surface

UL or lot no.	Section	Township	Range	Lot Idn	Feet from the	North/South line	Feet from the	East/West line	County
P									
¹² Dedicated Acres PC-320 acres E/2 FS-160 acres SE/4		¹³ Joint or Infill		¹⁴ Consolidation Code		¹⁵ Order No.			

NO ALLOWABLE WILL BE ASSIGNED TO THIS COMPLETION UNTIL ALL INTERESTS HAVE BEEN CONSOLIDATED OR A NON-STANDARD UNIT HAS BEEN APPROVED BY THE DIVISION

16

		FD REBAR W/ MRK'D STONE		<p>17 OPERATOR CERTIFICATION</p> <p>I hereby certify that the information contained herein is true and complete to the best of my knowledge and belief</p> <p><i>Patsy Clugston</i></p> <p>Signature Patsy Clugston Printed Name Sr. Regulatory Specialist Title 12/15/05 Date</p> <p>18 SURVEYOR CERTIFICATION</p> <p>I hereby certify that the well location shown on this plat was plotted from field notes of actual surveys made by me or under my supervision, and that the same is true and correct to the best of my belief.</p> <p>NOVEMBER 2005</p> <p>Date of Survey</p> <p>Signature and Seal of Professional Surveyor: 14831</p> <p>Certificate Number</p>	
		WOOLLEY, ROLAND RICH, ET UX			
8		USA SF-081085			
LAT: 36°44.1324' N. (NAD 27) LONG: 108°00.4910 W. (NAD 27)		USA NM-03877			
FD REBAR W/ MRK'D STONE		CALC'D COR. FROM WC COR. FD REBAR W/ MRK'D STONE S 89°11'43" W 2551.59' (C)			

District I

1625 N. French Dr., Hobbs, NM 88240

District II

1301 W. Grand Ave., Artesia, NM 88210

District III

1000 Rio Brazos Rd., Aztec, NM 87410

District IV

1220 S. St. Francis Dr., Santa Fe, NM 87505

Energy, Minerals and Natural Resources

OIL CONSERVATION DIVISION

1220 South St. Francis Dr.

Santa Fe, NM 87505

WELL API NO.

30-045- **33541**

5. Indicate Type of Lease

STATE ☐FEE ☐

6. State Oil & Gas Lease No.

Federal Lease - NM-03877

7. Lease Name or Unit Agreement Name

Fogelson 8

8. Well Number

#100S

9. OGRID Number

14538

10. Pool name or Wildcat

Basin FC/Fulcher Kutz PC/WC FS

SUNDRY NOTICES AND REPORTS ON WELLS
(DO NOT USE THIS FORM FOR PROPOSALS TO DRILL OR TO DEEPEN OR PLUG BACK TO A DIFFERENT RESERVOIR. USE "APPLICATION FOR PERMIT" (FORM C-101) FOR SUCH PROPOSALS.)

1. Type of Well:

Oil Well ☐Gas Well ☒

Other

2. Name of Operator

BURLINGTON RESOURCES OIL & GAS COMPANY LP

3. Address of Operator

3401 E. 30TH STREET, FARMINGTON, NM 87402

4. Well Location

Unit Letter P : 945' feet from the South line and 800' feet from the East line
Section 8 Township 29N Range 11W NMPM County San Juan

11. Elevation (Show whether DR, RKB, RT, GR, etc.)

5676' GR

Pit or Below-grade Tank Application

☐ or Closure ☐Pit type New Drill

Depth to Groundwater

>100

Distance from nearest fresh water well

>1000'

Distance from nearest surface water

<1000

Pit Liner Thickness:

12

mil

Below-Grade Tank:

Volume

bbls;

Construction Material

12. Check Appropriate Box to Indicate Nature of Notice, Report or Other Data

NOTICE OF INTENTION TO:PERFORM REMEDIAL WORK ☐TEMPORARILY ABANDON ☐PULL OR ALTER CASING ☐PLUG AND ABANDON ☐CHANGE PLANS ☐MULTIPLE COMPL ☐

OTHER:

New Drill ☒**SUBSEQUENT REPORT OF:**REMEDIAL WORK ☐COMMENCE DRILLING OPNS. ☐CASING/CEMENT JOB ☐ALTERING CASING ☐P AND A ☐OTHER: ☐

13. Describe proposed or completed operations. (Clearly state all pertinent details, and give pertinent dates, including estimated date of starting any proposed work). SEE RULE 1103. For Multiple Completions: Attach wellbore diagram of proposed completion or recompletion.

New Drill, Lined:

Burlington Resources proposes to construct a new drilling pit and an associated vent/flare pit. Based on Burlington's interpretation of the Ecosphere's risk ranking criteria, the new drilling pit will be a lined pit as detailed in Burlington's Revised Drilling / Workover Pit Construction / Operation Procedures dated November 11, 2004 on file at the NMOCD office. A portion of the vent/flare pit will be designed to manage fluids and that portion will be lined as per the risk ranking criteria. Burlington Resources anticipates closing these pits according to the Drilling / Workover Pit Closure Procedure dated August 2, 2004 on file at the NMOCD office

I hereby certify that the information above is true and complete to the best of my knowledge and belief. I further certify that any pit or below-grade tank has been/will be constructed or closed according to NMOCD guidelines ☐, a general permit ☒ or an (attached) alternative OCD-approved plan ☐.

SIGNATURE

TITLE

Regulatory Associate II

DATE

1/4/2006

Type or print name

Philana Thompson

E-mail address:

pthompson@br-inc.com

Telephone No.

505-326-9530

For State Use Only

APPROVED BY

TITLE

DEPUTY OIL & GAS INSPECTOR, DIST. II

DATE

FEB 10 2006

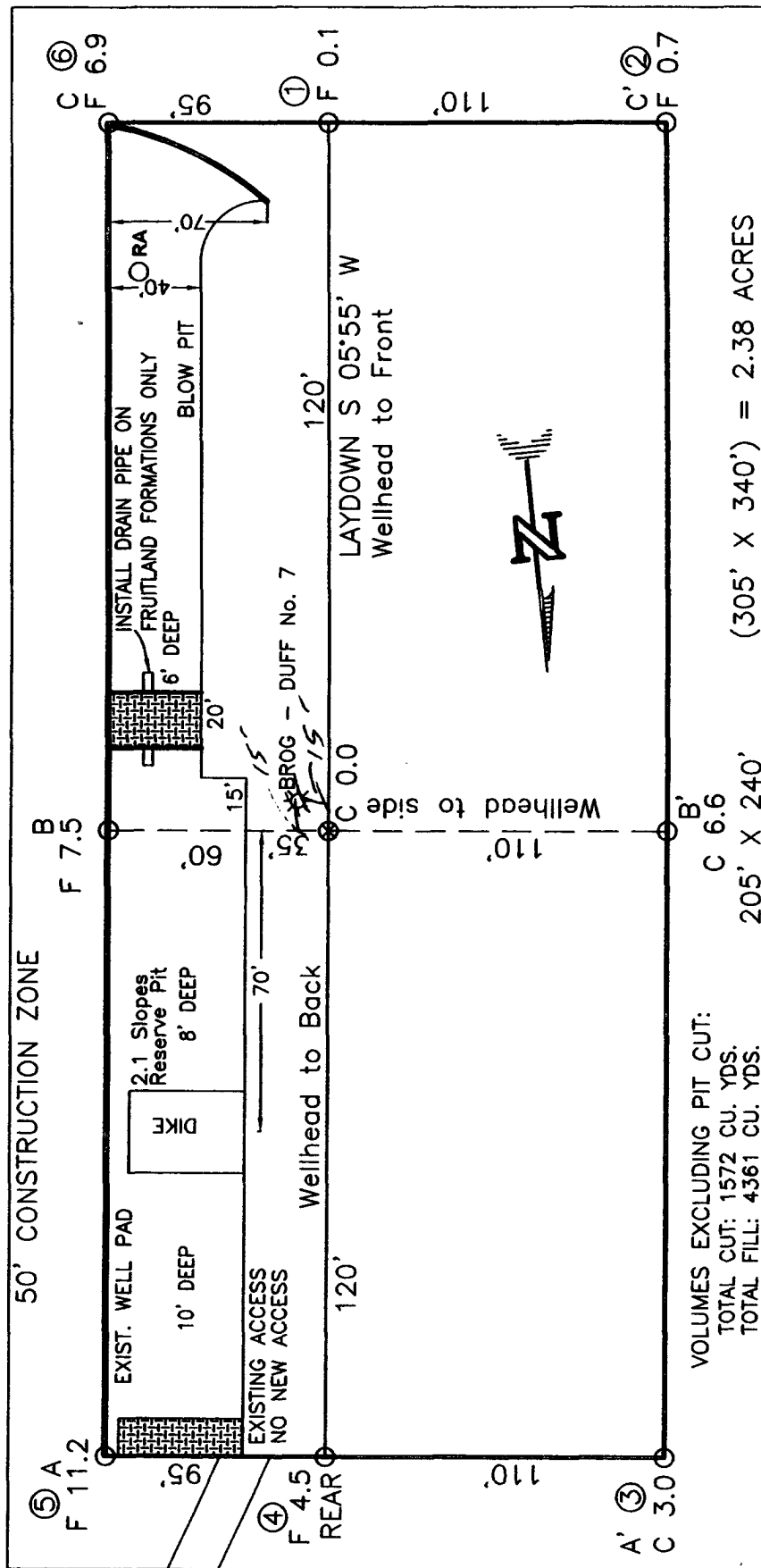
Conditions of Approval (if any):

FOGELSON 8 No. 100S, 945 FSL 800 FEL

SECTION 8, T-29-N, R-11-W, N.M.P.M., SAN JUAN COUNTY, NEW MEXICO

GROUND ELEVATION: 5676, DATE: NOVEMBER 29, 2005

LATITUDE: 36°44.1324' N (NAD 27) LONGITUDE: 108°00.4910' W (NAD 27)



RESERVE PIT DIKE: TO BE 8' ABOVE DEEP SIDE (OVERFLOW - 3' WIDE AND 1' ABOVE SHALLOW SIDE).
OVERFLOW PIT: OVERFLOW PIPE HALF WAY BETWEEN TOP AND BOTTOM AND TO EXTEND OVER PLASTIC LINER AND INTO BLOW PIT.

NOTE: DAGGETT ENTERPRISES, INC. IS NOT LIABLE FOR UNDERGROUND UTILITIES OR PIPELINES. NEW MEXICO

NOTE: ESTIMATED VOLUMES CALCULATED BY AVERAGE END AREA AT CROSS-SECTION SHOWN

NOTE: CONTRACTOR SHOULD CALL ONE-CALL FOR LOCATION OF ANY MARKED OR UNMARKED BURIED PIPELINES OR CABLES ON WELL PAD AND OR ACCESS ROAD AT LEAST TWO (2) WORKING DAYS PRIOR TO CONSTRUCTION.



Daggett Enterprises, Inc.
Surveying and Oil Field Services
 P. O. Box 15068 • Farmington, NM 87401
 Phone (505) 326-1772 • Fax (505) 326-6019

NEW MEXICO L.S. 14831

STERN AG

06789

DATE: 12/12/05

BURLINGTON RESOURCES OIL & GAS COMPANY LP

FOGELSON 8 No. 100S, 945 FSL 800 FEL

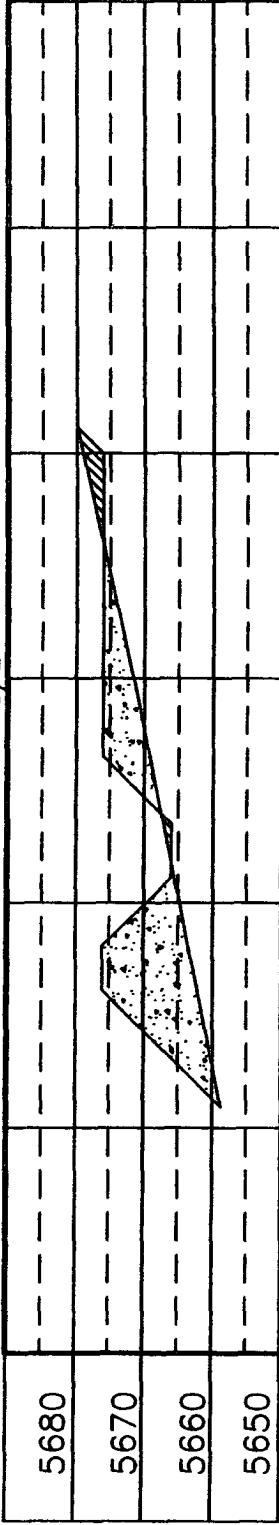
SECTION 8, T-29-N, R-11-W, N.M.P.M., SAN JUAN COUNTY, NEW MEXICO

GROUND ELEVATION: 5676, DATE: NOVEMBER 29, 2005

LATITUDE: 36°44.1324' N (NAD 27) LONGITUDE: 108°00.4910' W (NAD 27)

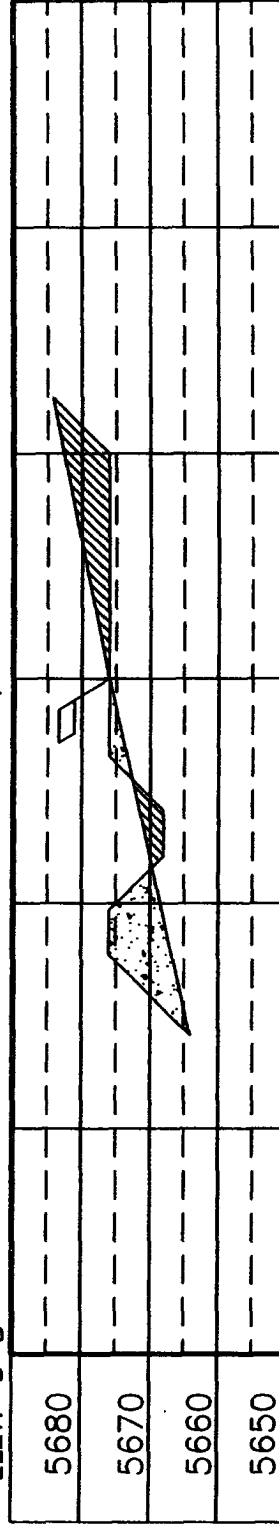
ELEV. A-A'

C/L



ELEV. B-B'

C/L



ELEV. C-C'

C/L



NOTE: DAGGETT ENTERPRISES, INC. IS NOT LIABLE FOR UNDERGROUND UTILITIES OR PIPELINES. NEW MEXICO ONE CALL TO BE NOTIFIED 48 HOURS PRIOR TO EXCAVATION OR CONSTRUCTION.

NOTE: CONTRACTOR SHOULD CALL ONE-CALL FOR LOCATION OF ANY MARKED OR UNMARKED BURIED PIPELINES OR CABLES ON WELL PAD AND OR ACCESS ROAD AT LEAST TWO (2) WORKING DAYS PRIOR TO CONSTRUCTION.



Daggett Enterprises, Inc.
Surveying and Oil Field Services
P. O. Box 15068 • Farmington, NM 87401
Phone (505) 326-1772 • Fax (505) 326-6019
NEW MEXICO L.S. 14831

REVISION DATE REVISION BY

DATE 12/12/05
DRAWN BY A.G.
CHECKED BY B.R.C.

OPERATIONS PLAN

Well Name: Fogelson 8 #100S
Location: Unit P (SESE), 945' FSL & 800' FEL, Sec. 8, T29N, R11W,
 San Juan County, New Mexico
 Latitude 36° 44.1324'N Longitude 108° 00.4910' W
Formation: Basin Fruitland Coal / Fruitland Sands & Pictured Cliffs
Elevation: 5676' GR

Formation:	Top	Bottom	Contents
Ojo Alamo	551'	690'	aquifer
Kirtland	690'	1564'	gas
T/Fruitland	1564'		gas
Pictured Cliffs	1875'		
Total Depth	2075'		

Logging Program: None

Mud Program:

<u>Interval</u>	<u>Type</u>	<u>Weight</u>	<u>Vis. Fluid Loss</u>
0- 120'	Spud/Air/Air Mist	8.4-8.9	40-50 no control
120-2075'	Non-dispersed	8.4-9.5	30-60 no control

Casing Program:

<u>Hole Size</u>	<u>Depth Interval</u>	<u>Csg. Size</u>	<u>Wt.</u>	<u>Grade</u>
8 $\frac{3}{4}$ "	0 - 120'	7"	20.0#	J-55
6 $\frac{1}{4}$ "	0 - 2075'	4 1/2"	10.5#	J/K-55

Tubing Program:

0 - 2075'	2 3/8"	4.7#	J-55
-----------	--------	------	------

Float Equipment: 7" surface casing - guide shoe. Centralizers will be run in accordance with Onshore Order #2.

4 1/2" production casing - float shoe and float collar on bottom. Centralizers run every third joint above shoe to the base of the Ojo Alamo @ 690'. Two turbolizing type centralizers - one below and one into the base of the Ojo Alamo @ 690'. Standard centralizers thereafter every fourth joint up to the base of the surface pipe.

Wellhead Equipment: 7" x 4 1/2" x 2 3/8" x 11" 2000 psi xmas tree assembly.

January 19, 2006

Cementing:

7" surface casing Pre-Set Drilled - Cement with Type I, II cement with 20% flyash mixed at 14.5 ppg, 1.61 cu ft per sack yield. (Bring cement to surface). Wait on cement for 24 hours for pre-set holes before pressure testing or drilling out from under surface.

7" surface casing - Cement with 42 sx Type III cement with 0.25 pps Celloflake, 3% CaCl. (54 cu ft of slurry @ 1.28 yield). 200% excess, bring cement to surface. Wait on cement for 8 hrs for conventionally set holes before pressure testing or drilling out from under surface.
WOC until cement establishes 250 psi compressive strength prior to NU of BOPE.

4 1/2" production casing - Cement with 102 sx (219 cu ft of slurry @ 2.13 yield) Premium Lite with 3% calcium chloride, 5 pps LCM-1, and 1/4#/sack celloflake, 0.4% FL-52, & 0.4% SMS. Tail with 90 sacks (124 cu ft of slurry @ 1.38 yield) Type III cmt with 1% calcium chloride, 1/4#/sack Celloflake and 0.2% FL-52. Total of 343 cf - 50% excess to circulate to surface.

BOP and tests:

Surface to TD - 11" 2000 psi (minimum double gate BOP stack (Reference Figure #1 and #2). Prior to drilling out surface casing, test rams to 600 psi/30 min.

Completion - 6" 2000 psi (minimum) double gate BOP stack (Reference Figure #2). Prior to completion operations, test rams and casing to 1500 psi/30 min.

From surface to TD - choke manifold (Reference Figure #3).

Pipe rams will be actuated at least once each day and blind rams actuated once each trip to test proper functioning. An upper kelly cock valve with handle and drill string safety valves to fit each drill string will be maintained and available on the rig floor.

Additional information:

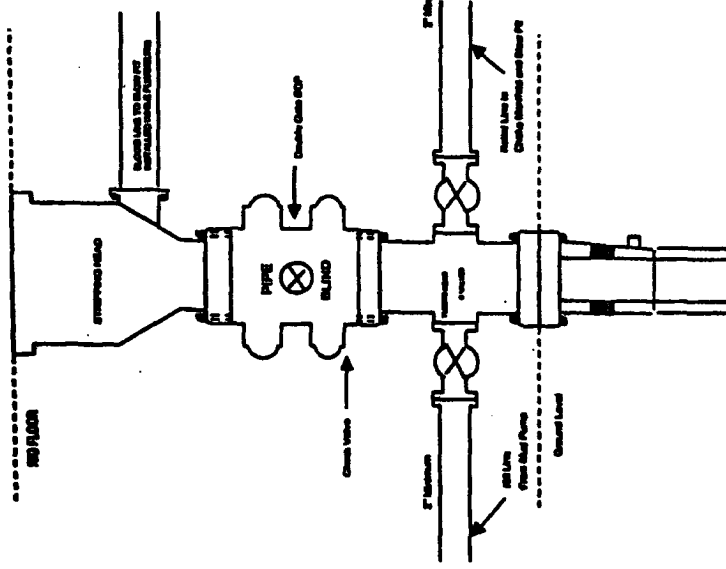
- * The Fruitland Coal, Fruitland Sands and Pictured formations will be completed.
- * Anticipated pore pressure for the Fruitland Coal is 600 - 700 psi.
- * This gas is dedicated.
- * The east half of the section is dedicated to the FC, and the SE/4 of the section is dedicated to the FS & PC for this well.
- * New casing will be utilized.
- * Pipe movement (either rotation or reciprocation) will be done if hole conditions permit.

Daniel Buxton
Drilling Engineer

1/19/06
Date

BURLINGTON RESOURCES

Completion/Workover Rig
BOP Configuration
2,000 psi System

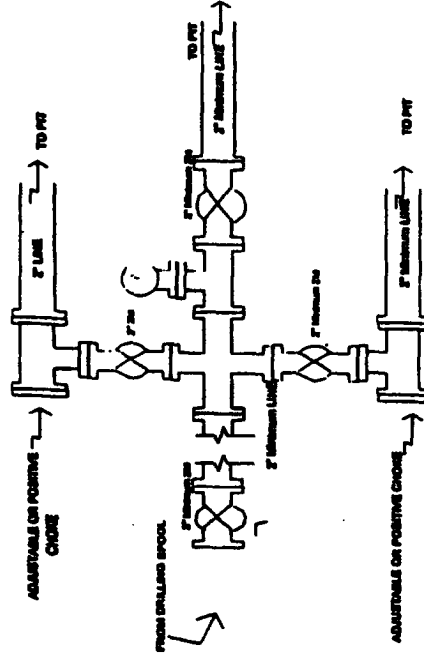


Minimum BOP installation for all Completion/Workover Operations. 7-1/16" bore, 2000 psi minimum working pressure double gate BOP to be equipped with blind and pipe rams. A stripping head to be installed on the top of the BOP. All BOP equipment is 2000 psi working pressure or greater excluding 500 psi stripping head.

Figure #2

BURLINGTON RESOURCES

Drilling Rig
Choke Manifold Configuration
2000 psi System

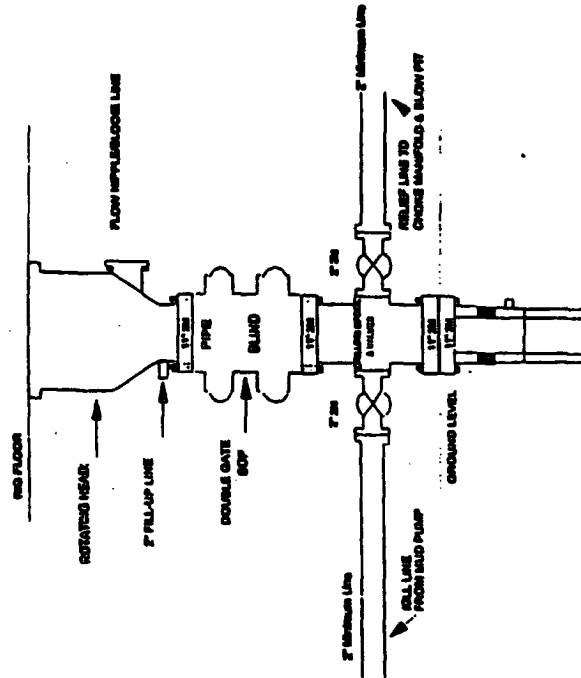


Choke manifold installation from Surface Casing Point to Total Depth. 2,000psi working pressure equipment with two chokes.

Figure #3

Burlington Resources

Drilling Rig
2000 psi System



BOP installation from Surface Casing Point to Total Depth. 11" Bore 10" Nominal, 2000 psi working pressure double gate BOP to be equipped with blind rams and pipe rams. A 500 psi rotating head on top of ram preventers. All BOP equipment is 2,000 psi working pressure.

Figure #1