

2006 FEB 6 AM 11 49

UNITED STATES
DEPARTMENT OF THE INTERIOR RECEIVED
BUREAU OF LAND MANAGEMENT 070 FARMINGTON NM
APPLICATION FOR PERMIT TO DRILL OR REENTER

5. Lease Serial No.
SF 078886

6. If Indian, Allottee or Tribe Name

7. If Unit or CA Agreement, Name and No.
Canyon Largo Unit

8. Lease Name and Well No. 32660
Canyon Largo Unit 475

9. API Well No.
30-039-29794

10. Field and Pool, or Exploratory
Basin Dakota 71599

11. Sec., T., R., M., or Blk. and Survey or Area
Lot A, Sec 21, T24N-R6W

12. County or Parish
Rio Arriba

13. State
NM

1a. Type of Work: DRILL REENTER

1b. Type of Well: Oil Well Gas Well Other Single Zone Multiple Zone

2. Name of Operator
Huntington Energy, L.L.C. 208706

3a. Address 6301 Waterford Blvd., Suite 400 Oklahoma City, OK 73118
3b. Phone No. (include area code)
(405) 840-9876

4. Location of Well (Report location clearly and in accordance with any State requirements. *)
At surface NENE 1320' FNL & 950' FEL
At proposed prod. zone same

14. Distance in miles and direction from nearest town or post office*
35 miles SE from Blanco, NM

15. Distance from proposed* location to nearest property or lease line, ft. (Also to nearest drig. unit line, if any)

16. No. of Acres in lease
2600

17. Spacing Unit dedicated to this well
320 E/2

18. Distance from proposed location* to nearest well, drilling, completed, applied for, on this lease, ft.

19. Proposed Depth
7100'

20. BLM/BIA Bond No. on file
NMB000076

21. Elevations (Show whether DF, KDB, RT, GL, etc.)
6808' GL

22. Approximate date work will start*

23. Estimated duration

24. Attachments

The following, completed in accordance with the requirements of Onshore Oil and Gas Order No.1, shall be attached to this form:

- 1. Well plat certified by a registered surveyor.
- 2. A Drilling Plan.
- 3. A Surface Use Plan (if the location is on National Forest System Lands, the SUPO shall be filed with the appropriate Forest Service Office).
- 4. Bond to cover the operations unless covered by an existing bond on file (see Item 20 above).
- 5. Operator certification.
- 6. Such other site specific information and/or plans as may be required by the authorized officer.

25. Signature *Catherine Smith* Name (Printed/Typed) Catherine Smith Date 2/1/06

Title Land Associate

Approved by (Signature) *[Signature]* Name (Printed/Typed) Date 2/13/06

Title AFM Office FFD

Application approval does not warrant or certify the the applicant holds legal or equitable title to those rights in the subject lease which would entitle the applicant to conduct operations thereon.
Conditions of approval, if any, are attached.

Title 18 U.S.C. Section 1001 and Title 43 U.S.C. Section 1212, make it a crime for any person knowingly and willfully to make to any department or agent of the United States any false, fictitious or fraudulent statements or representations as to any matter within its jurisdiction.

*(Instructions on reverse)

This action is subject to technical and procedural review pursuant to 43 CFR 3165.3 and appeal pursuant to 43 CFR 3165.4

DRILLING OPERATIONS AUTHORIZED ARE SUBJECT TO COMPLIANCE WITH ATTACHED "GENERAL REQUIREMENTS".



NMOCD
8

DISTRICT I
P.O. Box 1980, Hobbs, N.M. 88241-1980

State of New Mexico
Energy, Minerals & Natural Resources Department

Form C-10
Revised June 10, 200
Instructions on back
Submit to Appropriate District Office
State Lease - 4 Copies
Fee Lease - 3 Copies

DISTRICT II
1301 W. Grand Avenue, Artesia, N.M. 88210

OIL CONSERVATION DIVISION
1220 South St. Francis Dr.
Santa Fe, NM 87504-2088

DISTRICT III
1000 Rio Brazos Rd., Aztec, N.M. 87410

AMENDED REPORT

DISTRICT IV
1220 South St. Francis Dr., Santa Fe, NM 87505

WELL LOCATION AND ACREAGE DEDICATION PLAT

*API Number 30-039-29794		*Pool Code 71599	*Pool Name Basin Dakota
*Property Code -6886 321d0	*Property Name CANYON LARGO UNIT		*Well Number 475
*GRID No. 208706	*Operator Name HUNTINGTON ENERGY, L.L.C.		*Elevation 6808'

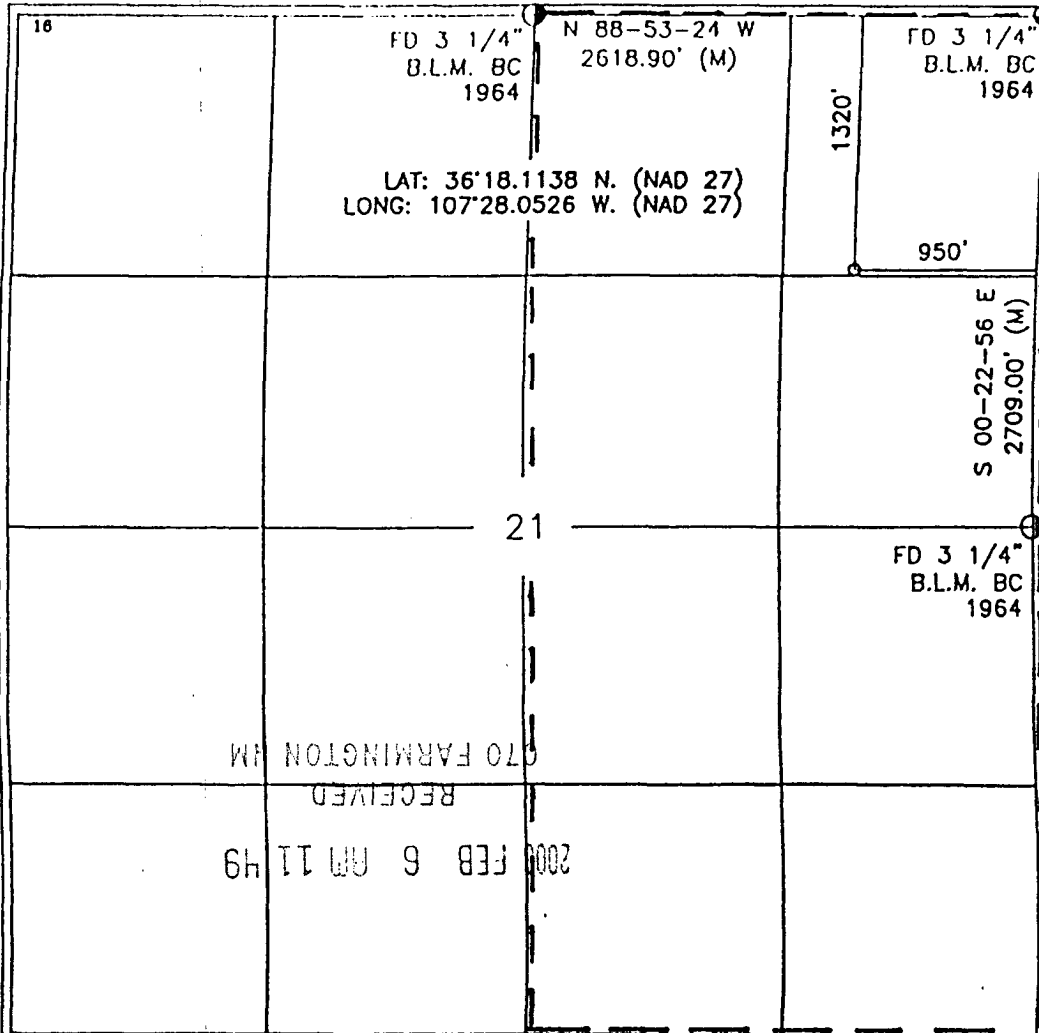
¹⁰ Surface Location

UL or lot no.	Section	Township	Range	Lot Idn	Feet from the	North/South line	Feet from the	East/West line	County
A	21	24-N	6-W		1320'	NORTH	950'	EAST	RIO ARRIE

¹¹ Bottom Hole Location If Different From Surface

UL or lot no.	Section	Township	Range	Lot Idn	Feet from the	North/South line	Feet from the	East/West line	County
*Dedicated Acres DK-E/320				*Joint or Infill	*Consolidation Code	*Order No.			

NO ALLOWABLE WILL BE ASSIGNED TO THIS COMPLETION UNTIL ALL INTERESTS HAVE BEEN CONSOLIDATED OR A NON-STANDARD UNIT HAS BEEN APPROVED BY THE DIVISION



17 OPERATOR CERTIFICATION
I hereby certify that the information contained here is true and complete to the best of my knowledge and belief.

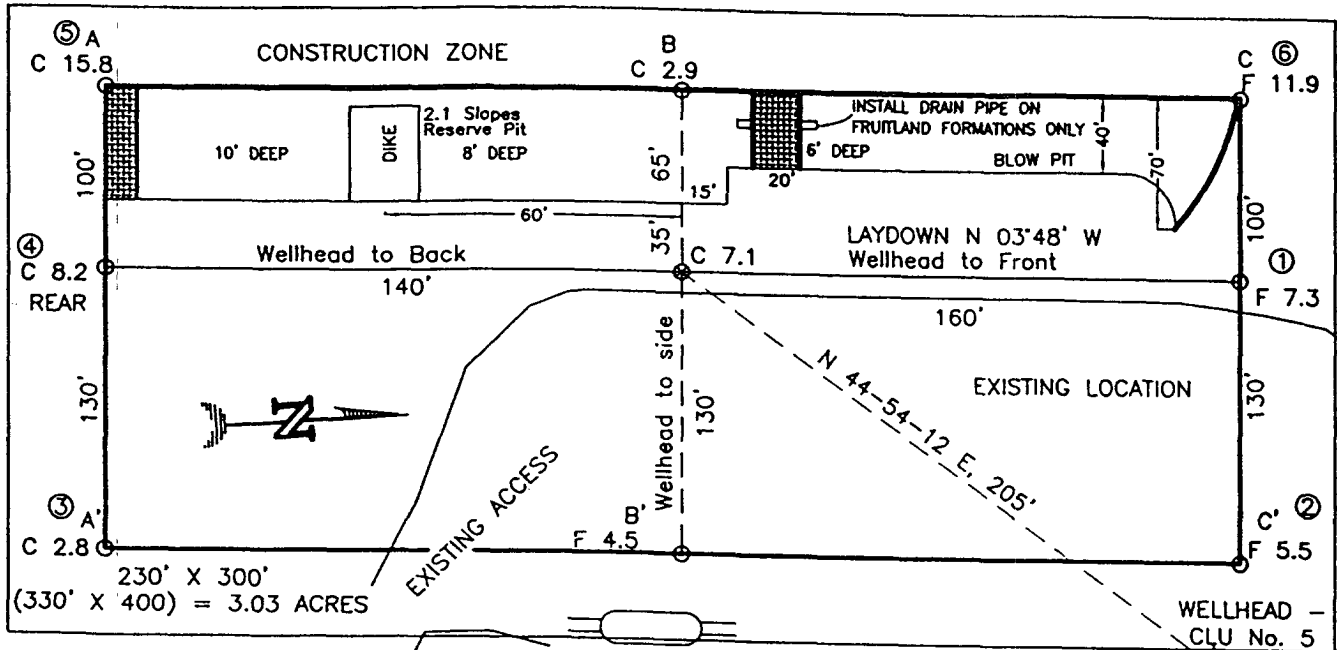
Catherine Smith
Signature
Catherine Smith
Printed Name
Land Associate
Title
11/29/05
Date

18 SURVEYOR CERTIFICATION
I hereby certify that the well location shown on this plat was plotted from field notes of actual surveys made by me or under my supervision, and that the same is true and correct to the best of my belief.

OCTOBER 18, 2005
Date of Survey
Signature and Seal of Professional Surveyor

Certificate Number

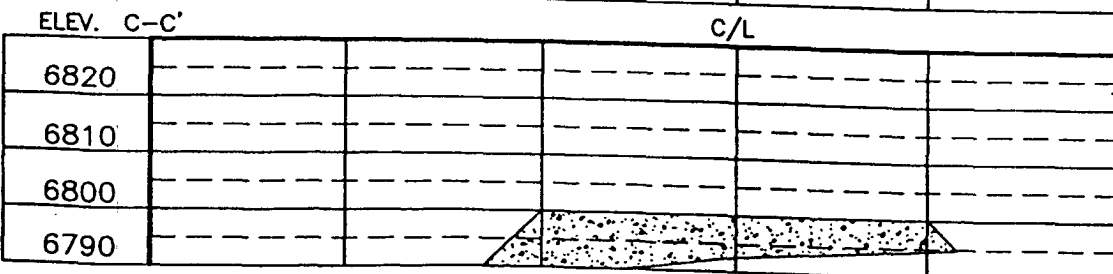
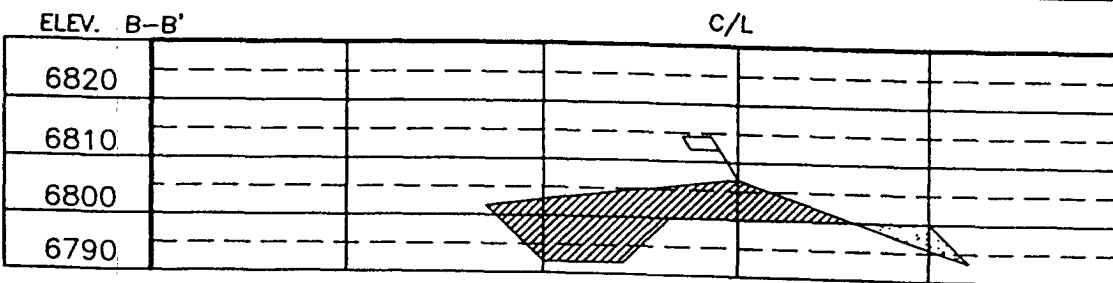
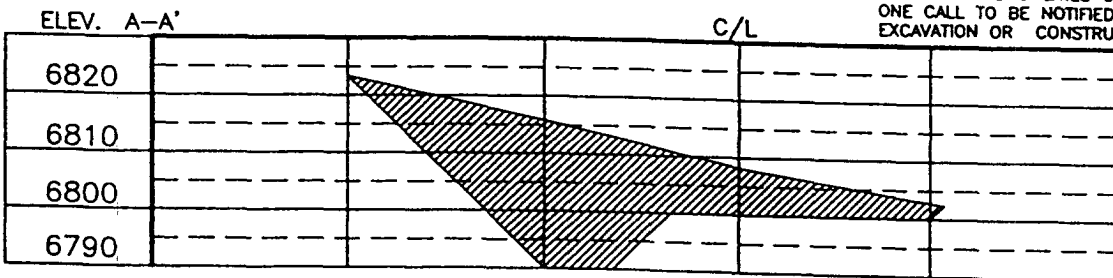
HUNTINGTON ENERGY, LLC / BURLINGTON RESOURCES OIL AND GAS COMPANY LP
 CANYON LARGO UNIT No. 475, 1320 FNL 950 FEL
 SECTION 21, T-24-N, R-6-W, N.M.P.M., RIO ARRIBA COUNTY, NEW MEXICO
 GROUND ELEVATION: 6808, DATE: OCTOBER 5, 2005



RESERVE PIT DIKE: TO BE 8' ABOVE DEEP SIDE (OVERFLOW - 3' WIDE AND 1' ABOVE SHALLOW SIDE).
 BLOW PIT: OVERFLOW PIPE HALFWAY BETWEEN TOP AND BOTTOM AND TO EXTEND OVER PLASTIC LINER AND INTO BLOW PIT.


NOTE:

DAGGETT ENTERPRISES, INC. IS NOT LIABLE FOR UNDERGROUND UTILITIES OR PIPELINES. NEW MEXICO ONE CALL TO BE NOTIFIED 48 HOURS PRIOR TO EXCAVATION OR CONSTRUCTION.



NOTE: CONTRACTOR SHOULD CALL ONE-CALL FOR LOCATION OF ANY MARKED OR UNMARKED BURIED PIPELINES OR CABLES ON WELL PAD AND OR ACCESS ROAD AT LEAST TWO (2) WORKING DAYS PRIOR TO CONSTRUCTION.

DATE:	REVISION BY:
Daggett Enterprises, Inc. Surveying and Oil Field Services P. O. Box 15068 • Farmington, NM 87401 Phone (505) 326-1772 • Fax (505) 326-6019 NEW MEXICO P.L.S. No. 14831	
DESIGN BY: A.G.	CHECKED: HTG03JCFB
DRAWN BY: HTG03J	DATE: 11/17/05



OPERATIONS PLAN

Well Name: Canyon Largo Unit #475
Location: 1320' FNL, 950' FEL, NE/4 Sec 21, T-24-N, R-6-W NMPM
 Rio Arriba County, NM
Formation: Basin Dakota
Elevation: 6808' GL

<u>Formation Tops:</u>	<u>Top</u>	<u>Bottom</u>	<u>RMSL</u>
Ojo Alamo	1704'	1958'	5120
Kirkland	1958'	1989'	4866
Fruitland	1989'	2284'	4835
Pictured Cliffs	2284'	2394'	4540
Lewis Shale	2394'	2649'	4430
Huerfanito	2649'	3854'	4175
Cliff House	3854'	3889'	2970
Menefee	3889'	4529'	2935
Point Lookout	4529'	4744'	2295
Mancos	4744'	5571'	2080
Gallup (Niobrara)	5571'	6489'	1253
Greenhorn	6489'	6544'	335
Graneros	6544'	6579'	280
Dakota	6579'	6929'	245
Morrison	6929'	7100'	-105
TD	7100'		

Logging Program:
 Open hole logs – Platform Express
 Cased hole logs – CBL/GR – TD to 6000'
 Cores & DST's – none
 Mud log – 3000' to TD

Mud Program:

<u>Interval</u>	<u>Type</u>	<u>Weight</u>	<u>Vis.</u>	<u>Fluid Loss</u>
0 – 320'	Spud	8.4-8.9	40-50	no control
320 – 7100'	LSND	8.4-9.0	40-60	8-12

Pit levels will be visually monitored to detect gain or loss of fluid control.

Casing Program:

<u>Hole Size</u>	<u>Depth Interval</u>	<u>Csg. Size</u>	<u>Wt.</u>	<u>Grade</u>
12 1/4"	0' – 320'	8 5/8"	24.0#	WC-50
7 7/8"	0' – 7100'	4 1/2"	11.6#	N-80

Tubing Program:

	0' – 7100'	2 3/8"	4.7#	J-55
--	------------	--------	------	------

BOP Specifications, Wellhead and Tests:

Surface to TD –

11" 3000 psi minimum double gate BOP stack (Reference Figure #1). After nipple-up prior to drilling out surface casing, ~~rams~~ and casing will be tested to 600 psi for 30 minutes. *BOP*

2" nominal, 3000 psi minimum choke manifold (Reference Figure #3).

Completion Operations:

6" 3000 psi double gate BOP stack (Reference Figure #2). After nipple-up prior to completion, pipe rams and casing top will be tested to 3000 psi for 15 minutes.

Surface to Total Depth:

2" nominal, 3000 psi minimum choke manifold (Reference Figure #3).

Wellhead:

8 5/8" x 4 1/2" x 1 1/2" x 1 1/2" x 3000 psi tree assembly.

General:

- Pipe rams will be actuated once each day and blind rams will be actuated once each trip to test proper functioning.
- An upper Kelly cock valve with handle available and drill string valves to fit each drill string will be available on the rig floors at all times.
- A BOP pit level drill will be conducted weekly for each drilling crew.
- All of the BOP tests and drills will be recorded in the daily drilling reports.
- Blind and pipe rams will be equipped with extension hand wheels.

Cementing:

8 5/8" surface casing –

Cement to surface w/265 sx Class "B" cement w/3% calcium chloride and 1/4#/sx cellophane flakes (312 cu. ft. of slurry, 200% excess to circulate to surface).

WOC 8 hr. prior to drilling out surface casing. Test casing to 600 psi for 30 minutes.

Saw tooth guide shoe on bottom. Bowspring centralizers will be run in accordance with Onshore Order #2.

Production Casing – 4 1/2"

Lead with 700 sx 65/35 Standard Poz w/6% gel, 1/4# Flocele, 10# Gilsonite, 3/10% Halad 9, 1/10% HR5 (1.96 yld). Tail w/900 sx 50/50 Standard Poz w/35 Gel, 9/10% Halad9, 2/10% CFR 3, 5# Gilsonite, 1/4# Flocele (1.47 yld).

Alternate Two-stage cement job as follows:

First Stage: Cement to circulate to stage tool @ 5066'. Lead with 700 sx Class "G" 50/50 poz (13#, 1.47 yd) w/3% gel, 0.25 pps Celloflake, 5 pps Gilsonite, 0.25 pps Fluid loss, 0.15% dispersant, 0.1% retarder. WOC 4 hours prior to pumping second stage. (Slurry volume: 1029 cu. ft. Excess slurry: 50%). DV Tool at 5000 ft.

Second Stage: Cement to circulate to surface. Cement with 700 sx Class "G" (12#, 2.9yd) TXI Liteweight cement w/2.5% sodium metasilicate, 2% calcium chloride, 10 pps Gilsonite, 0.5 pps Celloflake, 0.2% antifoam. WOC a minimum of 18 hours prior to cleanout. (Slurry volume: 1914 cu. ft. Excess slurry: 50%). Tail w/50 sx Class "B" w/1/4# Flocele (15.6#, 1.18 yd), (Slurry 59 cu. ft., Excess 50%).

Float shoe on bottom. Three centralizers run every other joint above shoe. Thirty-five centralizers - one every 4th joint to the base of the Ojo Alamo @ 2448'. Two turbolizing type centralizers – one below and one into the base of the Ojo Alamo @ 2448'. Standard centralizers thereafter every fourth joint up to the base of the surface pipe.

Note: If open hole logs are run, cement volumes will be based on 25% excess over caliper volumes.

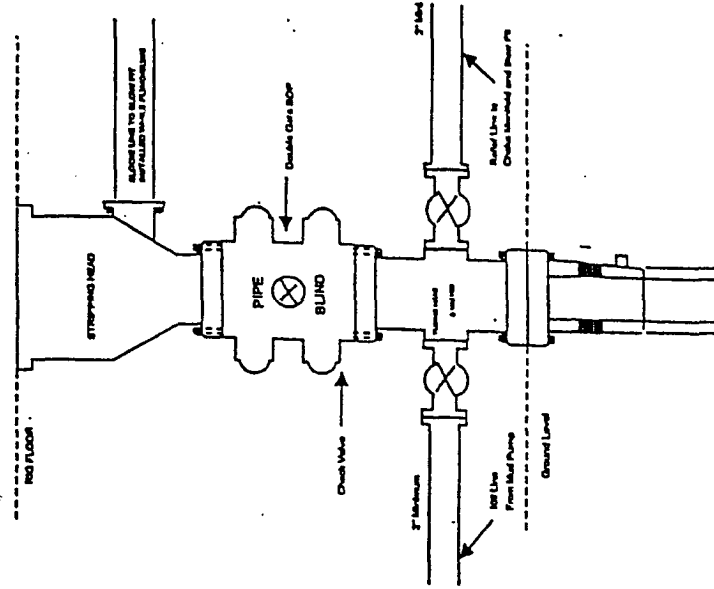
Additional Information:

The Dakota formations will be completed.

- No abnormal temperatures or hazards are anticipated.
- Sufficient LCM will be added to the mud system to maintain well control, if lost circulation is encountered below the top of the Pictured Cliffs.
- The east half of the Section 21 is dedicated to this well.
- This gas is dedicated.
- Anticipated pore pressure

Fruitland Coal	300 psi
Pictured Cliffs	500 psi
Mesa Verde	700 psi
Dakota	3000 psi

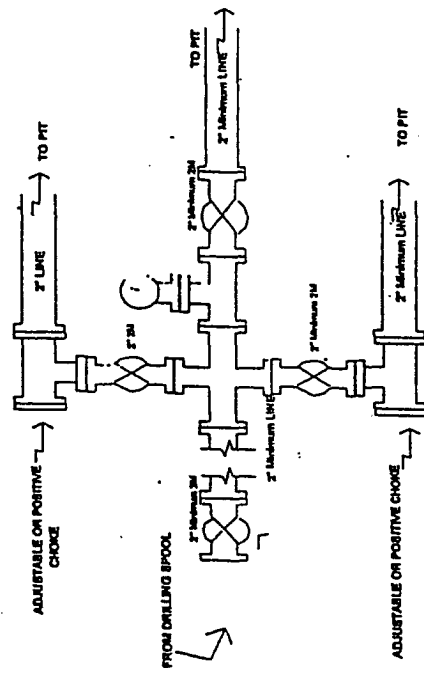
Completion/Workover Rig
BOP Configuration
2,000 psi System



Minimum BOP installation for all Completion/Workover Operations. 7-1/16" bore, 2000 psi minimum working pressure double gate BOP to be equipped with blind and pipe rams. A stripping head to be installed on the top of the BOP. All BOP equipment is 2000 psi working pressure or greater excluding 500 psi stripping head.

Figure #2

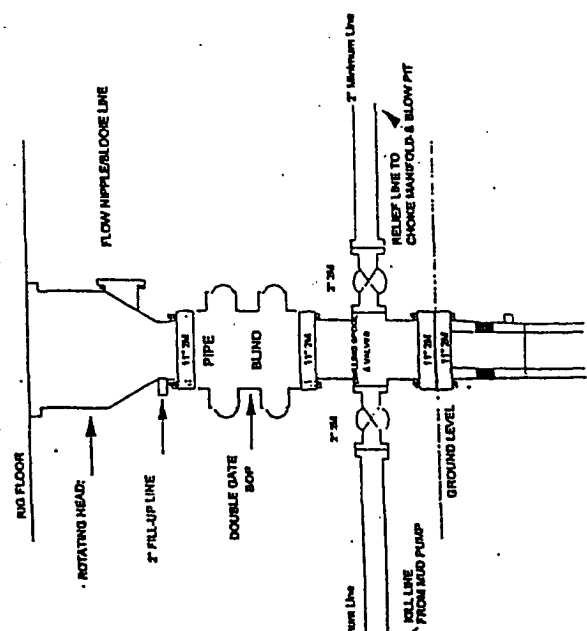
Drilling Rig
Choke Manifold Configuration
2000 psi System



Choke manifold installation from Surface Casing Point to Total Depth. 2,000psi working pressure equipment with two chokes.

Figure #3

Drilling Rig
2000 psi System



BOP Installation from Surface Casing Point to Total Depth. 11" Bore 10" Nonrotating Blow Preventer pressure double gate BOP to be equipped with pipe rams and pipe rams. A 500 psi rotating head on top of ram preventer. All BOP equipment is 2,000 psi working pressure

Figure #1