

UNITED STATES  
DEPARTMENT OF THE INTERIOR  
BUREAU OF LAND MANAGEMENT

APPLICATION FOR PERMIT TO DRILL, DEEPEN, OR PLUG BACK

2006 FEB 15 PM 2 33

1a. Type of Work  
DRILL

5. Lease Number

NMM-04209

Unit Reporting Number

070 FARMINGTON NM

1b. Type of Well  
GAS

6. If Indian, All. or Tribe

2. Operator  
**BURLINGTON**

RESOURCES Oil & Gas Company

7. Unit Agreement Name

3. Address & Phone No. of Operator

PO Box 4289, Farmington, NM 87499

8. Farm or Lease Name

Hancock A

(505) 326-9700

9. Well Number

#1008

4. Location of Well

Unit I (NESE), 1780' FSL, 660' FEL

10. Field, Pool, Wildcat

Basin Fruitland Coal

Latitude 36° 36.9728'N

Longitude 107° 45.0306'W

11. Sec., Twn, Rge, Mer. (NMPM)

Sec. 35, T28N, R9W

API # 30-045-33598

14. Distance in Miles from Nearest Town

13.3 miles to Blanco, NM

12. County

San Juan

13. State

NM

15. Distance from Proposed Location to Nearest Property or Lease Line

660'

16. Acres in Lease

17. Acres Assigned to Well

320.15 E/2

18. Distance from Proposed Location to Nearest Well, Drig, Compl, or Applied for on this Lease

1019' - Hancock A #10

19. Proposed Depth

2326'

20. Rotary or Cable Tools

Rotary

21. Elevations (DF, FT, GR, Etc.)

5964' GL

22. Approx. Date Work will Start

23. Proposed Casing and Cementing Program

See Operations Plan attached

24. Authorized by:

Armanda Sandoval  
Regulatory Compliance Assistant II

2-15-06

Date

PERMIT NO.

APPROVAL DATE

APPROVED BY

TITLE

DATE

Archaeological Report attached

Threatened and Endangered Species Report attached

NOTE: This format is issued in lieu of U.S. BLM Form 3160-3

Title 18 U.S.C. Section 1001, makes it a crime for any person knowingly and willfully to make to any department or agency of the United States any false, fictitious or fraudulent statements or presentations as to any matter within its jurisdiction.

DRILLING OPERATIONS AUTHORIZED BY

NMOCD

DISTRICT I  
1625 N. French Dr., Hobbs, N.M. 88240

DISTRICT II  
1301 W. Grand Ave., Artesia, N.M. 88210

DISTRICT III  
1000 Rio Brazos Rd., Aztec, N.M. 87410

DISTRICT IV  
1220 South St. Francis Dr., Santa Fe, NM 87505

State of New Mexico  
Energy, Minerals & Natural Resources Department

OIL CONSERVATION DIVISION

1220 South St. Francis Dr.  
Santa Fe, NM 87505

Form C-102  
Revised June 10, 2003

Submit to Appropriate District Office  
State Lease 334 Copies  
Fee Lease - 3 Copies

2006 FEB 15

RECEIVED  
AMENDED REPORT

070 FARMINGTON NM

WELL LOCATION AND ACREAGE DEDICATION PLAT

*API Number 30-045-33598	*Pool Code 71629	*Pool Name Basin Fruitland Coal
*Property Code 7077	*Property Name HANCOCK A	*Well Number 100S
*OGRID No. 14538	*Operator Name BURLINGTON RESOURCES OIL & GAS COMPANY LP	*Elevation 5964'

<sup>10</sup> Surface Location

UL or lot no.	Section	Township	Range	Lot Idn	Feet from the	North/South line	Feet from the	East/West line	County
I	35	28-N	9-W		1780	SOUTH	660	EAST	SAN JUAN

<sup>11</sup> Bottom Hole Location If Different From Surface

UL or lot no.	Section	Township	Range	Lot Idn	Feet from the	North/South line	Feet from the	East/West line	County
I									
*Dedicated Acres 320.15 acres E/2			*Joint or Infill		*Consolidation Code		*Order No.		

NO ALLOWABLE WILL BE ASSIGNED TO THIS COMPLETION UNTIL ALL INTERESTS HAVE BEEN CONSOLIDATED  
OR A NON-STANDARD UNIT HAS BEEN APPROVED BY THE DIVISION

16					17 OPERATOR CERTIFICATION I hereby certify that the information contained herein is true and complete to the best of my knowledge and belief. <i>Patsy Clugston</i> Signature Patsy Clugston Printed Name Sr. Regulatory Specialist Title 1/10/06 Date
USA NM-04209					
FD 2 1/2" G.L.O. BC 1916					
35					
LAT. 36°36.9728' N. (NAD 27) LONG. 107°45.0306 W. (NAD 27)					
660'					
S 88-43-07 W 2656.30' (M)					
1780'					
N 00-06-31 W 2612.77' (M)					
LOT 1 LOT 2 LOT 3 LOT 4					18 SURVEYOR CERTIFICATION I hereby certify that the well location shown on this plat was plotted from field notes of actual surveys made by me or under my supervision, and that the same is true and correct to the best of my belief. DECEMBER 12 2005 Date of Survey Signature and Seal of Professional Surveyor: 14831 REGISTERED PROFESSIONAL SURVEYOR Certificate Number
FD 2 1/2" G.L.O. BC 1916					

Submit 3 Copies To Appropriate District Office

District I

1625 N. French Dr., Hobbs, NM 88240

District II

1301 W. Grand Ave., Artesia, NM 88210

District III

1000 Rio Brazos Rd., Aztec, NM 87410

District IV

1220 S. St. Francis Dr., Santa Fe, NM 87505

State of New Mexico

Energy, Minerals and Natural Resources

**OIL CONSERVATION DIVISION**

1220 South St. Francis Dr.  
Santa Fe, NM 87505

Form C-103

May 27, 2004

<b>SUNDRY NOTICES AND REPORTS ON WELLS</b> (DO NOT USE THIS FORM FOR PROPOSALS TO DRILL OR TO DEEPEN OR PLUG BACK TO A DIFFERENT RESERVOIR. USE "APPLICATION FOR PERMIT" (FORM C-101) FOR SUCH PROPOSALS.)		WELL API NO. 30-045- <b>33598</b>
1. Type of Well: Oil Well <input type="checkbox"/> Gas Well <input checked="" type="checkbox"/> Other		5. Indicate Type of Lease STATE <input type="checkbox"/> FEE <input type="checkbox"/>
2. Name of Operator BURLINGTON RESOURCES OIL & GAS COMPANY LP		6. State Oil & Gas Lease No. NMNM-04209
3. Address of Operator 3401 E. 30TH STREET, FARMINGTON, NM 87402		7. Lease Name or Unit Agreement Name Hancock A
4. Well Location Unit Letter <u>I</u> : <u>1780</u> feet from the <u>South</u> line and <u>660</u> feet from the <u>East</u> line Section <u>35</u> Township <u>28N</u> Rng <u>9W</u> NMPM County <u>San Juan</u>		8. Well Number #100S
11. Elevation (Show whether DR, RKB, RT, GR, etc.) 5964'		9. OGRID Number 14538
Pit or Below-grade Tank Application <input type="checkbox"/> or Closure <input type="checkbox"/>		10. Pool name or Wildcat Basin Fruitland Coal
Pit type <u>New Drill</u> Depth to Groundwater <u>&gt;100'</u> Distance from nearest fresh water well <u>&gt;1000'</u> Distance from nearest surface water <u>&gt;1000'</u> Pit Liner Thickness: <u>n/a</u> mil Below-Grade Tank: <u>Volume</u> bbls; Construction Material <u></u>		

12. Check Appropriate Box to Indicate Nature of Notice, Report or Other Data

**NOTICE OF INTENTION TO:**

PERFORM REMEDIAL WORK ☐ PLUG AND ABANDON ☐  
TEMPORARILY ABANDON ☐ CHANGE PLANS ☐  
PULL OR ALTER CASING ☐ MULTIPLE COMPL ☐  
OTHER: New Drill ☒

**SUBSEQUENT REPORT OF:**

REMEDIAL WORK ☐ ALTERING CASING ☐  
COMMENCE DRILLING OPNS. ☐ P AND A ☐  
CASING/CEMENT JOB ☐  
OTHER: ☐

13. Describe proposed or completed operations. (Clearly state all pertinent details, and give pertinent dates, including estimated date of starting any proposed work). SEE RULE 1103. For Multiple Completions: Attach wellbore diagram of proposed completion or recompletion.

New Drill, Unlined:

Burlington Resources proposes to construct a new drilling pit and an associated vent/flare pit. Based on Burlington's interpretation of the Ecosphere's risk ranking criteria, the new drilling pit and vent/flare pit will be an unlined pit as detailed in Burlington's Revised Drilling / Workover Pit Construction / Operation Procedures dated November 11, 2004 on file at the NMOCD office. A portion of the vent/flare pit will be designed to manage fluids, and that portion will be unlined, as per the risk ranking criteria. Burlington Resources anticipates closing these pits according to the Drilling / Workover Pit Closure Procedure dated August 2, 2004 on file at the NMOCD office.

I hereby certify that the information above is true and complete to the best of my knowledge and belief. I further certify that any pit or below-grade tank has been/will be constructed or closed according to NMOCD guidelines ☐, a general permit ☒ or an (attached) alternative OCD-approved plan ☐.

SIGNATURE Amanda Sandoval TITLE Regulatory Assistant II DATE 1/17/2006

Type or print name Amanda Sandoval E-mail address: asandoval@br-inc.com Telephone No. 505-326-9891  
For State Use Only

APPROVED BY [Signature] TITLE DEPUTY OIL & GAS INSPECTOR, DIST. # DATE FEB 23 2006  
Conditions of Approval (if any):

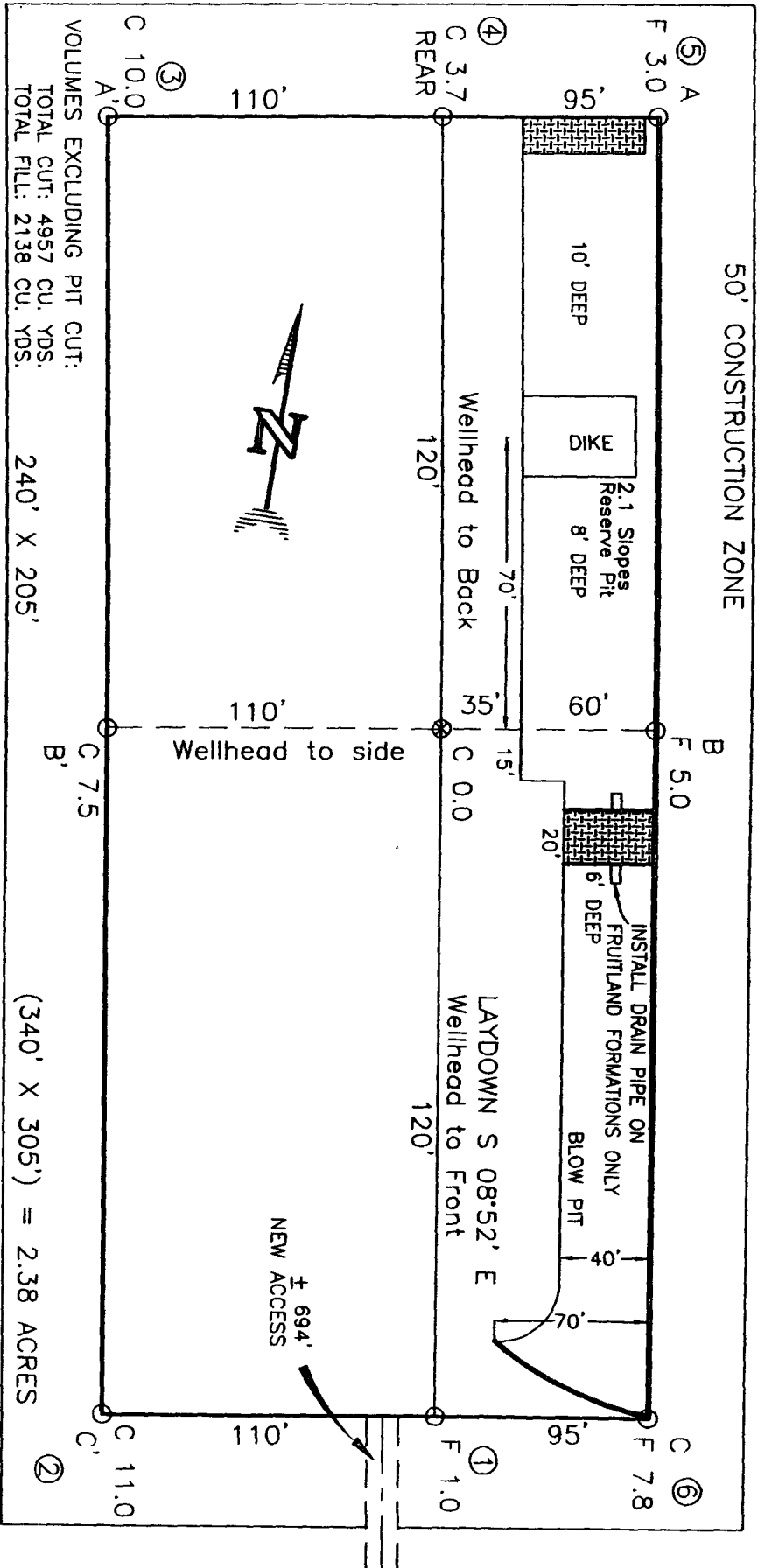
# BURLINGTON RESOURCES OIL & GAS COMPANY LP

HANCOCK A No. 100S, 1780 FSL 660 FEL

SECTION 35, T-28-N, R-9-W, N.M.P.M., SAN JUAN COUNTY, NEW MEXICO

GROUND ELEVATION: 5964, DATE: DECEMBER 13, 2005


LATITUDE: 36°36.9728' N (NAD 27) LONGITUDE: 107°45.0306' W (NAD 27)



NOTE: DAGGETT ENTERPRISES, INC. IS NOT LIABLE FOR UNDERGROUND UTILITIES OR PIPELINES. NEW MEXICO ONE CALL TO BE NOTIFIED 48 HOURS PRIOR TO EXCAVATION OR CONSTRUCTION.

NOTE: ESTIMATED VOLUMES CALCULATED BY AVERAGE END AREA AT CROSS-SECTION SHOWN

NOTE: CONTRACTOR SHOULD CALL ONE-CALL FOR LOCATION OF ANY MARKED OR UNMARKED BURIED PIPELINES OR CABLES ON WELL PAD AND OR ACCESS ROAD AT LEAST TWO (2) WORKING DAYS PRIOR TO CONSTRUCTION.

REVISIONS	DATE	REVISIONS
 <p><b>Daggett Enterprises, Inc.</b> Surveying and Oil Field Services P. O. Box 15068 • Farmington, NM 87401 Phone (505) 326-1772 • Fax (505) 326-8019 NEW MEXICO L.S. 14831</p>		
DESIGN BY: G.Y.	DATE: 12/23/05	PROJECT NO.
DRAWN BY: BIRDO		

**HANCOCK A No. 100S, 1780 FSL 660 FEL**

**GROUND ELEVATION: 5964, DATE: DECEMBER 13, 2005**

LATITUDE: 36°36.9728' N (NAD 27)      LONGITUDE: 107°45.0306' W (NAD 27)

ELEV. C-C'	C/L					
5980	---	---	---	---	---	---
5970	---	---	---	---	---	---
5960	---	---	---	---	---	---
5950	---	---	---	---	---	---

**NOTE: DAGGETT ENTERPRISES, INC. IS NOT LIABLE FOR UNDERGROUND UTILITIES OR PIPELINES. NEW MEXICO ONE CALL TO BE NOTIFIED 48 HOURS PRIOR TO EXCAVATION OR CONSTRUCTION.**

NOTE: CONTRACTOR SHOULD CALL ONE-CALL FOR LOCATION OF ANY MARKED OR UNMARKED BURIED PIPELINES OR CABLES ON WELL PAD AND OR ACCESS ROAD AT LEAST TWO (2) WORKING DAYS PRIOR TO CONSTRUCTION.



**Daggett Enterprises, Inc.**  
**Surveying and Oil Field Services**  
 P. O. Box 15088 • Farmington, NM 87401  
 Phone (505) 328-1772 • Fax (505) 328-8019  
**NEW MEXICO U.S. 14831**

DRAWN BY: G.V.  
NOOF: BR803

CMOFILE: BR603\_CFB  
DATE: 12/23/05

**OPERATIONS PLAN**

**Well Name:** Hancock A #100S  
**Location:** Unit I (NESE) 1780' FSL & 660' FEL, Section 35, T28N, R09W  
 San Juan County, New Mexico  
 Latitude 36° 36.9728'N; Longitude 107° 45.0306'W  
**Formation:** Basin Fruitland Coal  
**Elevation:** 5964' GR

Formation:	Top	Bottom	Contents
Surface	San Jose		
Ojo Alamo	1164'		
Kirtland	1256'	1963'	gas
T/Fruitland	1963'		gas
B/Fruitland Coal	2123'		gas
Pictured Cliffs	2126'		
Total Depth	2326'		

**Note:** The Total Depth for this well is into the Pictured Cliffs interval, but currently only have plans to complete the Fruitland Coal interval. We could in the near future perforate/stimulate the Pictured Cliffs interval, but only would once Regulatory approval was asked for and received.

**Logging Program:** None

**Mud Program:**

<u>Interval</u>	<u>Type</u>	<u>Weight</u>	<u>Vis. Fluid Loss</u>
0- 120'	Spud/Air/Air Mist	8.4-8.9	40-50 no control
120-2326'	Non-dispersed	8.4-9.5	30-60 no control

**Casing Program:**

<u>Hole Size</u>	<u>Depth Interval</u>	<u>Csg. Size</u>	<u>Wt.</u>	<u>Grade</u>
8 $\frac{3}{4}$ "	0 - 120'	7"	20.0#	J-55
6 $\frac{1}{4}$ "	0 - 2326'	4 1/2"	10.5#	J/K-55

**Tubing Program:**

0 - 2326'	2 3/8"	4.7#	J-55
-----------	--------	------	------

**Float Equipment:** 7" surface casing - guide shoe. Centralizers will be run in accordance with Onshore Order #2.

4 1/2" production casing - float shoe and float collar on bottom. Centralizers run every third joint above shoe to the base of the Ojo Alamo @ 1256'. Two turbolizing type centralizers - one below and one into the base of the Ojo Alamo @ 1256'. Standard centralizers thereafter every fourth joint up to the base of the surface pipe.

**Wellhead Equipment:** 7" x 4 1/2" x 2 3/8" x 11" 2000 psi xmas tree assembly.

January 17, 2006

**Cementing:**

7" surface casing Pre-Set Drilled - Cement with Type I, II cement with 20% flyash mixed at 14.5 ppg, 1.61 cu ft per sack yield. (Bring cement to surface). Wait on cement for 24 hours for pre-set holes before pressure testing or drilling out from under surface.

7" surface casing - Cement with 42 sx Type III cement with 0.25 pps Celloflake, 3% CaCl.  
(54 cu ft of slurry @ 1.28 yield). 200% excess, bring cement to surface. Wait on cement for 8 hrs for conventionally set holes before pressure testing or drilling out from under surface.  
**WOC until cement establishes 250 psi compressive strength prior to NU of BOPE.**

4 1/2" production casing - Cement with 110sx (234cu ft of slurry @ 2.13 yield) Premium Lite with 3% calcium chloride, 5 pps LCM-1, and 1/4#/sack celloflake, 0.4% FL-52, & 0.4% SMS. Tail with 90 sacks (124 cu ft of slurry @ 1.38 yield) Type III cmt with 1% calcium chloride, 1/4#/sack Celloflake and 0.2% FL-52. Total of 358 cf - 50% excess to circulate to surface.

**BOP and tests:**

Surface to TD - 11" 2000 psi (minimum double gate BOP stack (Reference Figure #1 and #2). Prior to drilling out surface casing, test ~~rams~~ <sup>BOPE</sup> to 600 psi/30 min.


Completion - 6" 2000 psi (minimum) double gate BOP stack (Reference Figure #2). Prior to completion operations, test rams and casing to 1500 psi/30 min.

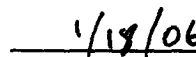
From surface to TD - choke manifold (Reference Figure #3).

Pipe rams will be actuated at least once each day and blind rams actuated once each trip to test proper functioning. An upper kelly cock valve with handle and drill string safety valves to fit each drill string will be maintained and available on the rig floor.

**Additional information:**

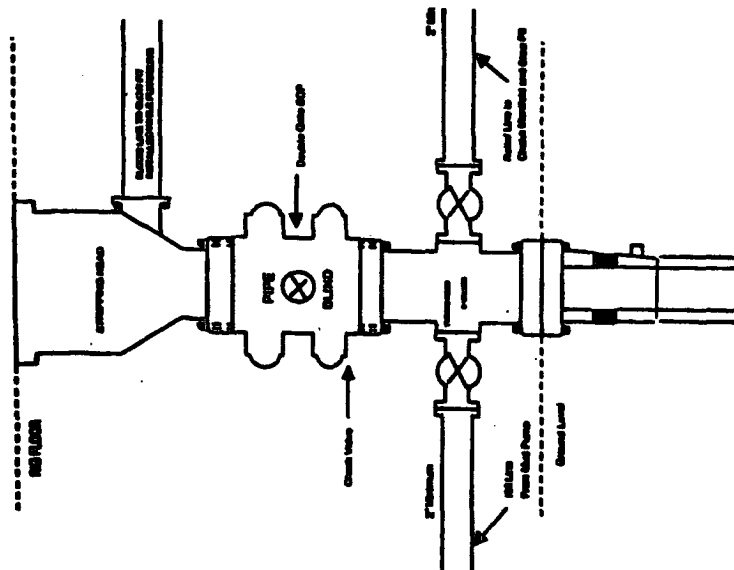
- \* The Fruitland Coal formation will be completed.
- \* Anticipated pore pressure for the Fruitland is between 600 - 700 psi.
- \* This gas is dedicated.
- \* The east half of section 35 is dedicated to Fruitland Coal.
- \* New casing will be utilized.
- \* Pipe movement (either rotation or reciprocation) will be done if hole conditions permit.

  
Drilling Engineer

  
Date 1/18/06

# BURLINGTON RESOURCES

Completion/Workover Rig  
BOP Configuration  
2,000 psi System



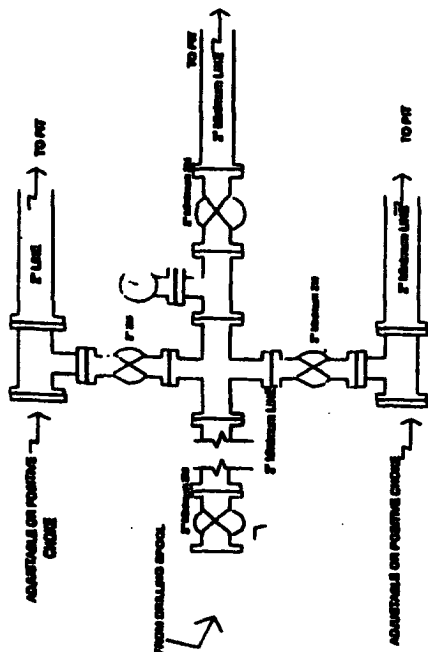
Minimum BOP installation for all Completion/Workover Operations. 7-1/8\"/>

Figure #2

4-20-01

# BURLINGTON RESOURCES

Drilling Rig  
Choke Manifold Configuration  
2000 psi System



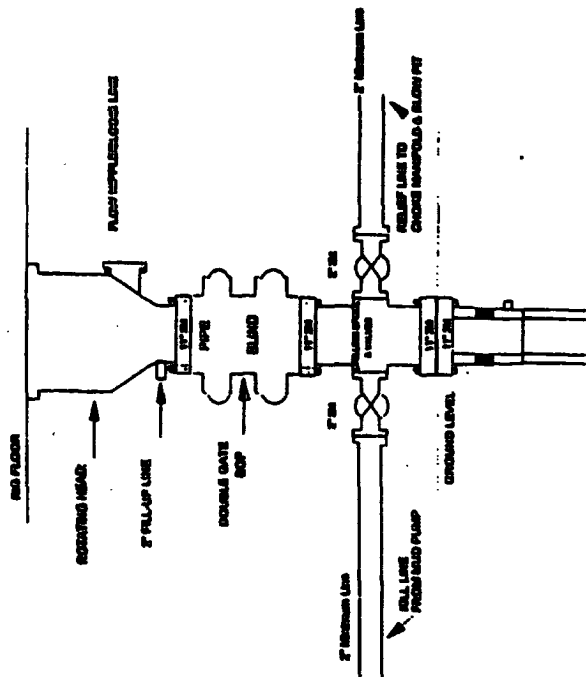
Choke manifold installation from Surface Casing  
Point to Total Depth. 2,000psi working pressure  
equipment with two chokes.

Figure #3

4-20-01

# Burlington Resources

Drilling Rig  
2000 psi System



BOP Installation from Surface Casing Point to Total Depth. 11\"/>

Figure #1