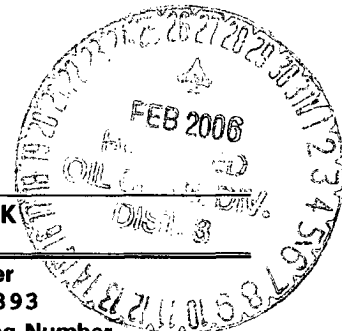


UNITED STATES
DEPARTMENT OF THE INTERIOR
BUREAU OF LAND MANAGEMENT



APPLICATION FOR PERMIT TO DRILL, DEEPEN, OR PLUG BACK

2006 FEB 9 PM 3 05

1a. Type of Work
DRILL

5. Lease Number
NMSF-079393
Unit Reporting Number

1b. Type of Well
GAS

6. If Indian, All. or Tribe

2. Operator
BURLINGTON
RESOURCES Oil & Gas Company LP

7. Unit Agreement Name

San Juan 27-5 Unit

3. Address & Phone No. of Operator
PO Box 4289, Farmington, NM 87499
(505) 326-9700

8. Farm or Lease Name

9. Well Number
#82N

4. Location of Well
Unit L (NWSW), 2030' FSL & 660' FWL,

10. Field, Pool, Wildcat
Blanco MV/ Basin DK

Lat. 36*36.0963'N
Long. 107*24.3987'W

11. Sec., Twn, Rge, Mer. (NMPM)
Sec. 6, T27N, R5W

API # 30-039-29806

14. Distance in Miles from Nearest Town
34 miles to Blanco

12. County
Rio Arriba

13. State
NM

15. Distance from Proposed Location to Nearest Property or Lease Line
660'

16. Acres in Lease

17. Acres Assigned to Well
W/2 342.380 MV/DK

18. Distance from Proposed Location to Nearest Well, Drig, Compl, or Applied for on this Lease
980' DK

19. Proposed Depth
7752'

20. Rotary or Cable Tools
Rotary

21. Elevations (DF, FT, GR, Etc.)
GR:6528, KB:6540

22. Approx. Date Work will Start

23. Proposed Casing and Cementing Program
See Operations Plan attached

24. Authorized by: [Signature]
Regulatory Compliance Associate II

2-9-06
Date

PERMIT NO.

APPROVAL DATE

APPROVED BY [Signature]

TITLE AFM

DATE 2/29/06

Archaeological Report attached

Threatened and Endangered Species Report attached

NOTE: This format is issued in lieu of U.S. BLM Form 3160-3

Title 18 U.S.C. Section 1001, makes it a crime for any person knowingly and willfully to make to any department or agency of the United States any false, fictitious or fraudulent statements or presentations as to any matter within its jurisdiction.

This well is NOT in the HPA area.

DRILLING OPERATIONS AUTHORIZED ARE
SUBJECT TO COMPLIANCE WITH ATTACHED
"GENERAL REQUIREMENTS".

This action is subject to technical and
procedural review pursuant to 43 CFR 3165.3
and appeal pursuant to 43 CFR 3165.4

NMOCD

DISTRICT I
1625 N. French Dr., Hobbs, N.M. 88240

State of New Mexico
Energy, Minerals & Natural Resources Department

Form C-102
Revised August 15, 2000

DISTRICT II
811 South First, Artesia, N.M. 88210

Submit to Appropriate District Office
State Lease - 4 Copies
Fee Lease - 3 Copies

DISTRICT III
1000 Rio Brazos Rd., Aztec, N.M. 87410

OIL CONSERVATION DIVISION
2040 South Pacheco
Santa Fe, NM 87505

DISTRICT IV
2040 South Pacheco, Santa Fe, NM 87505

☐ AMENDED REPORT

WELL LOCATION AND ACREAGE DEDICATION PLAT

¹ API Number 30-039-29806	² Pool Code 72319/71599	³ Pool Name Blanco Mesaverde/ Basin Dakota
⁴ Property Code 7454	⁵ Property Name SAN JUAN 27-5 UNIT	⁶ Well Number 82N
⁷ OGRID No. 14538	⁸ Operator Name BURLINGTON RESOURCES OIL AND GAS COMPANY LP	⁹ Elevation 6528'

¹⁰ Surface Location

UL or lot no.	Section	Township	Range	Lot Idn	Feet from the	North/South line	Feet from the	East/West line	County
L	6	27-N	5-W	13	2030'	SOUTH	660'	WEST	RIO ARriba

¹¹ Bottom Hole Location If Different From Surface

UL or lot no.	Section	Township	Range	Lot Idn	Feet from the	North/South line	Feet from the	East/West line	County
¹² Dedicated Acres W2 342.380 MV/DK					¹³ Joint or Infill		¹⁴ Consolidation Code		¹⁵ Order No.

NO ALLOWABLE WILL BE ASSIGNED TO THIS COMPLETION UNTIL ALL INTERESTS HAVE BEEN CONSOLIDATED
OR A NON-STANDARD UNIT HAS BEEN APPROVED BY THE DIVISION

<div><p>LOT 9</p><p>LOT 10</p><p>LOT 13</p><p>LOT 14</p><p>660'</p><p>2030'</p><p>N 0°-02'-55" E 2649.08'</p><p>N 89°-52'-06" E 2743.24'</p></div>	<div><p>LOT 8</p><p>LOT 11</p><p>LOT 12</p><p>LOT 15</p><p>NM SF-079393</p><p>6</p><p>LAT: 36°36.0963' N. LONG: 107°24.3987' W. NAD 1983</p><p>RECEIVED FEB 9 PM 3 0002</p></div>	<div><p>¹⁷ OPERATOR CERTIFICATION</p><p>I hereby certify that the information contained herein is true and complete to the best of my knowledge and belief</p><p><u>Amanda Sandoval</u> Signature Amanda Sandoval Printed Name Regulatory Assistant II Title 1-18-06 Date</p><p>¹⁸ SURVEYOR CERTIFICATION</p><p>I hereby certify that the well location shown on this plat was plotted from field notes of actual surveys made by me or under my supervision, and that the same is true and correct to the best of my belief.</p><p>Date of Survey <u>1-11-06</u></p><p><u>Carlin W. Russell</u> Signature and Seal of Professional Surveyor 15703 Certificate Number</p></div>
--	---	---

Office

Energy, Minerals and Natural Resources

May 27, 2004

District I

1625 N. French Dr., Hobbs, NM 88240

District II

1301 W. Grand Ave., Artesia, NM 88210

District III

1000 Rio Brazos Rd., Aztec, NM 87410

District IV

1220 S. St. Francis Dr., Santa Fe, NM 87505

OIL CONSERVATION DIVISION

1220 South St. Francis Dr.

Santa Fe, NM 87505

WELL API NO.

30-039-29806

5. Indicate Type of Lease

STATE ☐FEE ☐

6. State Oil & Gas Lease No.

Federal Lease - NMSF-079393

7. Lease Name or Unit Agreement Name

San Juan 27-5 Unit

8. Well Number

#82N

9. OGRID Number

14538

10. Pool name or Wildcat

Blanco MV/ Basin DK

SUNDY NOTICES AND REPORTS ON WELLS
(DO NOT USE THIS FORM FOR PROPOSALS TO DRILL OR TO DEEPEN OR PLUG BACK TO A
DIFFERENT RESERVOIR. USE "APPLICATION FOR PERMIT" (FORM C-101) FOR SUCH
PROPOSALS.)

1. Type of Well:

Oil Well ☐Gas Well ☒

Other

2. Name of Operator

BURLINGTON RESOURCES OIL & GAS COMPANY LP

3. Address of Operator

3401 E. 30TH STREET, FARMINGTON, NM 87402

4. Well Location

Unit Letter L : 2030' feet from the South line and 660' feet from the West line
Section 6 Township 27N Range 5W NMPM County Rio Arriba

11. Elevation (Show whether DR, RKB, RT, GR, etc.)

6528' GR

Pit or Below-grade Tank Application

☐ or Closure ☐

Pit type

New Drill

Depth to Groundwater

>100

Distance from nearest fresh water well

>1000'

Distance from nearest surface water

>200'

Pit Liner Thickness:

NA

mil

Below-Grade Tank:

Volume

bbls;

Construction Material

12. Check Appropriate Box to Indicate Nature of Notice, Report or Other Data

NOTICE OF INTENTION TO:

PERFORM REMEDIAL WORK ☐TEMPORARILY ABANDON ☐PULL OR ALTER CASING ☐PLUG AND ABANDON ☐CHANGE PLANS ☐MULTIPLE COMPL ☐

SUBSEQUENT REPORT OF:

REMEDIAL WORK ☐COMMENCE DRILLING OPNS. ☐CASING/CEMENT JOB ☐ALTERING CASING ☐P AND A ☐

OTHER:

New Drill ☒OTHER: ☐

13. Describe proposed or completed operations. (Clearly state all pertinent details, and give pertinent dates, including estimated date of starting any proposed work). SEE RULE 1103. For Multiple Completions: Attach wellbore diagram of proposed completion or recompletion.

New Drill, Unlined:

Burlington Resources proposes to construct a new drilling pit and an associated vent/flare pit. Based on Burlington's interpretation of the Ecosphere's risk ranking criteria, the new drilling pit and vent/flare pit will be an unlined pit as detailed in Burlington's Revised Drilling / Workover Pit Construction / Operation Procedures dated November 11, 2004 on file at the NMOCD office. A portion of the vent/flare pit will be designed to manage fluids, and that portion will be unlined, as per the risk ranking criteria. Burlington Resources anticipates closing these pits according to the Drilling / Workover Pit Closure Procedure dated August 2, 2004 on file at the NMOCD office.

I hereby certify that the information above is true and complete to the best of my knowledge and belief. I further certify that any pit or below-grade tank has been/will be constructed or closed according to NMOCD guidelines ☐, a general permit ☒ or an (attached) alternative OCD-approved plan ☐.

SIGNATURE

TITLE

Regulatory Compliance Associate II

DATE

1/26/2006

Type or print name

Philana Thompson

E-mail address:

pthompson@br-inc.com

Telephone No.

505-326-9530

For State Use Only

APPROVED BY

TITLE

DEPUTY OIL & GAS INSPECTOR, DIST. 8

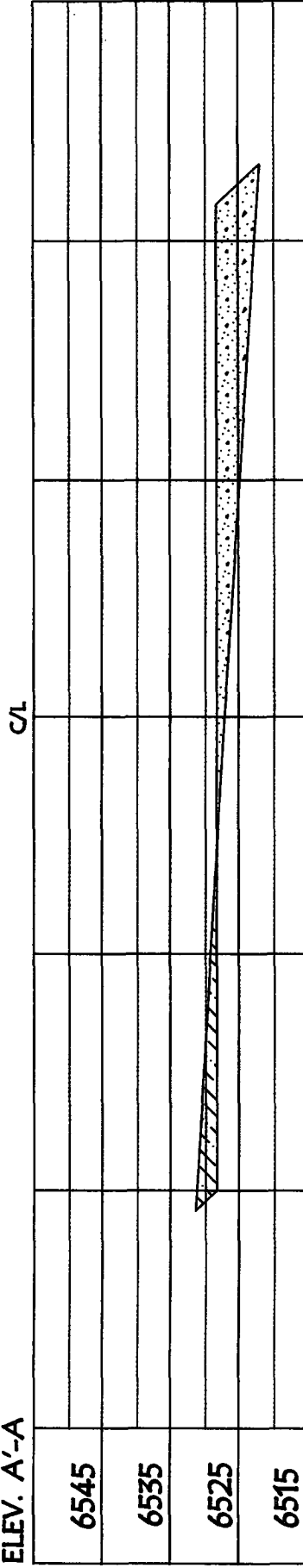
DATE

FEB 27 2006

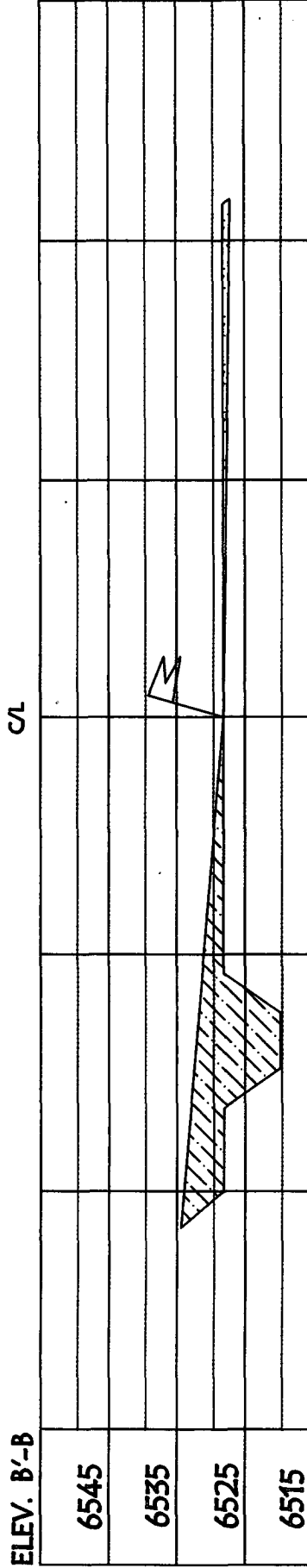
Conditions of Approval (if any)

BURLINGTON RESOURCES OIL & GAS COMPANY LP
 SAN JUAN 27-5 UNIT #82N, 2030' FSL & 660' FWL
 SECTION 6, T-27-N, R-5-W, NMPM, RIO ARriba COUNTY, NM
 GROUND ELEVATION: 6528', DATE: DECEMBER 6, 2005

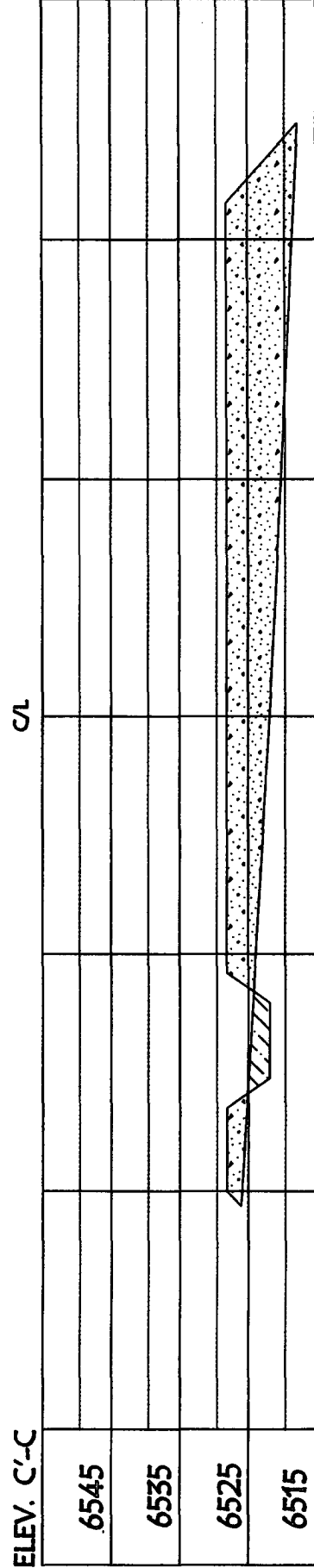
ELEV. A'-A



ELEV. B'-B



ELEV. C'-C



NOTE: VECTOR SURVEYS IS NOT LIABLE FOR UNDERGROUND UTILITIES OR PIPELINES.
 CONTRACTOR SHOULD CALL ONE-CALL FOR LOCATION OF ANY MARKED OR UNMARKED BURIED
 PIPELINES OR CABLES ON WELL PAD AND OR ACCESS ROAD AT LEAST TWO (2) WORKING DAYS PRIOR TO CONSTRUCTION.

OPERATIONS PLAN

Well Name: San Juan 27-5 Unit #82N

Location: 2030' FSL, 660' FWL, Sec 6, T-27-N, R-5-W
Rio Arriba County, NM

Latitude 36° 33.5767' N, Longitude 107° 15.9012' W

Formation: Blanco Mesaverde/Basin Dakota

Total Depth: 7752'

Logging Program: See San Juan 27-5 Unit Master Operations Plan

Mud Program: See San Juan 27-5 Unit Master Operations Plan

Casing Program (as listed, the equivalent, or better):

Hole Size	Depth Interval	Csg	Wt.	Grade	Cement	
12 1/4	0' - 120	9.625"	32.3#	H-40	113	cu.ft
8 3/4	0' - 3573	7"	20.0#	J-55	799	cu.ft
6 1/4	7800 - 7752	4.5"	10.5#	J-55	569	cu.ft

Tubing Program: See San Juan 27-5 Unit Master Operations Plan

- * The Mesaverde and Dakota formations will be completed and commingled.
- * The west half of Section 6 is dedicated to the Mesaverde and the Dakota formation in this well.
- * Gas is dedicated.

Drilling Engineer 

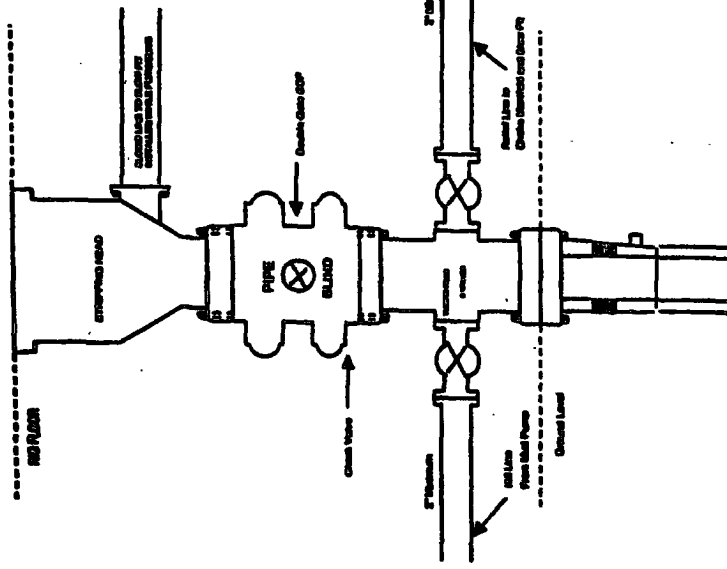
Date 1/26/06

*Assumption

Lewis 100

BURLINGTON RESOURCES

Completion/Workover Rig
BOP Configuration
2,000 psi System

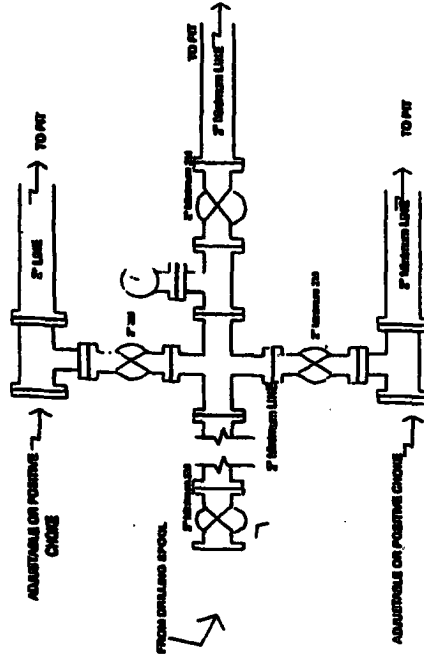


Minimum BOP Installation for all Completion/Workover Operations. 7-1/16" bore, 2000 psi minimum working pressure double gate BOP to be equipped with blind and pipe rams. A chocking head to be installed on the top of the BOP. All BOP equipment to 2000 psi working pressure or greater excluding 500 psi chocking head.

Figure #2

BURLINGTON RESOURCES

Drilling Rig
Choke Manifold Configuration
2000 psi System

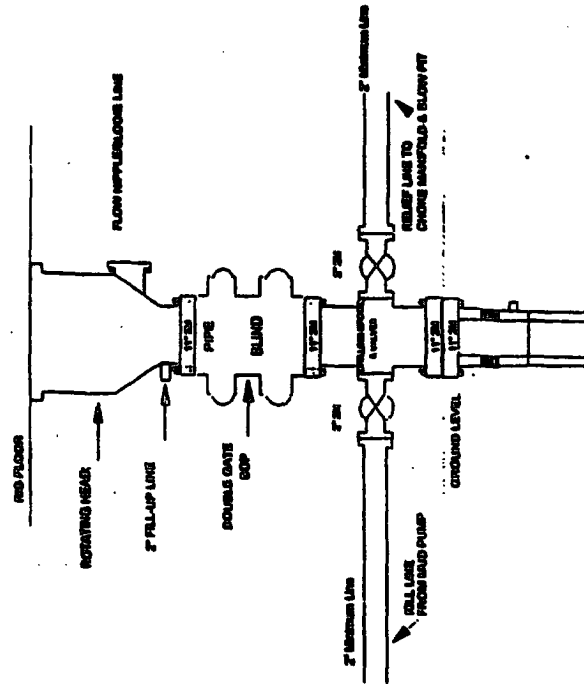


Choke manifold installation from Surface Casing Point to Total Depth. 2,000psi working pressure equipment with two chokes.

Figure #3

Burlington Resources

Drilling Rig
2000 psi System



BOP Installation from Surface Casing Point to Total Depth. 11" Bore 10" Minimum, 2000 psi minimum working pressure double gate BOP to be equipped with blind rams and pipe rams. A 500 psi chocking head on top of ram preventers. All BOP equipment to 2,000 psi working pressure

Figure #1