

District I
1625 N. French Dr., Hobbs, NM 88240
District II
1301 W. Grand Avenue, Artesia, NM 88210
District III
1000 Rio Brazos Road, Aztec, NM 87410
District IV
1220 S. St. Francis Dr., Santa Fe, NM 87505

State of New Mexico
Energy Minerals and Natural Resources

Form C-101
May 27, 2004

Oil Conservation Division
1220 South St. Francis Dr.
Santa Fe, NM 87505

Submit to appropriate District Office

☐ AMENDED REPORT

APPLICATION FOR PERMIT TO DRILL, RE-ENTER, DEEPEN, PLUGBACK, OR ADD A ZONE

¹ Operator Name and Address Basin Minerals Operating Company, c/o Walsh Engineering 7415 E. Main St., Farmington, NM 87402		² OGRID Number 233083
³ Property Code 301301	⁴ Property Name Federal	⁵ Well No. 100B
⁹ Proposed Pool 1 Blanco Mesa Verde		¹⁰ Proposed Pool 2 Basin Dakota

7 Surface Location							
UL or lot no. E	Section 27	Township 31N	Range 11W	Lot Idn	Feet from the 2505'	North/South line North	Feet from the 660'

8 Proposed Bottom Hole Location If Different From Surface							
UL or lot no.	Section	Township	Range	Lot Idn	Feet from the	North/South line	Feet from the

Additional Well Information				
¹¹ Work Type Code N	¹² Well Type Code G	¹³ Cable/Rotary R	¹⁴ Lease Type Code P	¹⁵ Ground Level Elevation 5769'
¹⁶ Multiple Y	¹⁷ Proposed Depth 7030 +/-	¹⁸ Formation Dakota	¹⁹ Contractor	²⁰ Spud Date
Depth to Groundwater >50'		Distance from nearest fresh water well >1000'		Distance from nearest surface water > 200'
Pit: Liner: Synthetic <input checked="" type="checkbox"/> 12 mils thick Clay <input type="checkbox"/> Pit Volume: 3500 bbls Drilling Method: Closed-Loop System <input type="checkbox"/> Fresh Water <input checked="" type="checkbox"/> Brine <input type="checkbox"/> Diesel/Oil-based <input type="checkbox"/> Gas/Air <input type="checkbox"/>				

21 Proposed Casing and Cement Program					
Hole Size	Casing Size	Casing weight/foot	Setting Depth	Sacks of Cement	Estimated TOC
12-1/4"	9-5/8"	36.0#	200' +/-	110 sx (130 cu.ft.)	Surface
8-3/4"	7"	23.0#	2950' +/-	770 & 123 cuft	Surface
6-1/4"	4-1/2"	10.5# & 11.6#	7030' +/-	555 & 196 cu.ft.	2850'

²² Describe the proposed program. If this application is to DEEPEN or PLUG BACK, give the data on the present productive zone and proposed new productive zone. Describe the blowout prevention program, if any. Use additional sheets if necessary.

Basin Minerals Operating Company, proposes to drill a vertical well at the above described location and test the Mesa Verde and Dakota formation. A 12-1/4" surface hole will be drilled to 200' where 9-5/8", 36# casing will be set and cemented to surface with 130 cu.ft. of neat cement. After WOC a 2000 psi double ram blow out preventer will be installed and pressure tested to 1000 psi. An 8-3/4" hole will be drilled to 2950' with fresh water mud. 7", 23# casing will be set and cemented to surface with 777 cu.ft. of CI "B" with 2% SMS and 123 cu.ft. of Type III cement. A 6-1/4" hole will be drilled to approximately 7030' with air or air/mist. Induction and density logs will be run at TD. 4-1/2", 10.5# and 11.6# casing liner will be run from TD to 100' above the intermediate casing shoe and cement circulated with 555 cu.ft. of Premium Lite with additives and 198 cu.ft of Premium Lite with additives. The Mesa Verde and Dakota formation will be selectively perforated and completed. The well will be connected to El Paso Field Services gathering system.

Formation tops: Ojo Alamo - 1475', Kirtland - 1830', Fruitland - 2035', Pictured Cliffs - 2360', Cliff House - 3930', Point Lookout - 4620' Greenhorn - 6610', Greenerous - 6665', and Dakota - 6720'.

²³ I hereby certify that the information given above is true and complete to the best of my knowledge and belief. I further certify that the drilling pit will be constructed according to NMOCD guidelines <input checked="" type="checkbox"/> , a general permit <input type="checkbox"/> , or an (attached) alternative OCD-approved plan <input type="checkbox"/> .		OIL CONSERVATION DIVISION	
Printed name: Paul C. Thompson, P.E. <i>Paul C. Thompson</i>		Approved by: <i>[Signature]</i>	
Title: Agent		Title: DEPUTY OIL & GAS INSPECTOR, DIST. 3	
E-mail Address: paul@walsheng.net		Approval Date: MAR 01 2006 Expiration Date: MAR 01 2007	
Date: 3/8/05	Phone: (505) 327-4892	Conditions of Approval Attached <input type="checkbox"/>	

District I
PO Box 1980, Hobbs, NM 88241-1980

District II
PO Drawer DD, Artesia, NM 88211-0719

District III
1000 Rio Brazos Rd., Aztec, NM 87410

District IV
PO Box 2088, Santa Fe, NM 87504-2088

State of New Mexico
Energy, Minerals & Natural Resources Department

OIL CONSERVATION DIVISION
PO Box 2088
Santa Fe, NM 87504-2088

Form C-102

Revised February 21, 1994

Instructions on back

Submit to Appropriate District Office

State Lease - 4 Copies

Fee Lease - 3 Copies

☐ AMENDED REPORT

WELL LOCATION AND ACREAGE DEDICATION PLAT

*API Number 30-045-33619		*Pool Code 72319	*Pool Name BLANCO MESAVERDE
*Property Code 301301	*Property Name FEDERAL		*Well Number 100B
*OGRID No. 233083	*Operator Name BASIN MINERALS LTD		*Elevation 5769'

¹⁰ Surface Location

UL or lot no.	Section	Township	Range	Lot Idn	Feet from the	North/South line	Feet from the	East/West line	County
E	27	31N	11W		2505	NORTH	660	WEST	SAN JUAN

¹¹ Bottom Hole Location If Different From Surface

UL or lot no.	Section	Township	Range	Lot Idn	Feet from the	North/South line	Feet from the	East/West line	County

¹² Dedicated Acres 320.00 Acres - (W/2)	¹³ Joint or Infill Y	¹⁴ Consolidation Code	¹⁵ Order No.
--	---	----------------------------------	-------------------------

NO ALLOWABLE WILL BE ASSIGNED TO THIS COMPLETION UNTIL ALL INTERESTS HAVE BEEN CONSOLIDATED
OR A NON-STANDARD UNIT HAS BEEN APPROVED BY THE DIVISION

<div><p>¹⁶</p><p>27</p></div>	<p>¹⁷ OPERATOR CERTIFICATION</p> <p>I hereby certify that the information contained herein is true and complete to the best of my knowledge and belief</p> <p><i>Paul C. Thomas</i> Signature</p> <p>Paul C. Thomas Printed Name</p> <p>AGENT Title</p> <p>2/24/06 Date</p>
	<p>¹⁸ SURVEYOR CERTIFICATION</p> <p>I hereby certify that the well location shown on this plat was plotted from field notes of actual surveys made by me or under my supervision, and that the same is true and correct to the best of my belief</p> <p>Survey Date: JANUARY 13, 2006</p> <p>Signature and Seal of Professional Surveyor</p> <div><p>JASON C. EDWARDS Certificate Number 15269</p></div>

District I
PO Box 1980, Hobbs, NM 88241-1980

District II
PO Drawer DD, Artesia, NM 88211-0719

District III
1000 Rio Brazos Rd., Aztec, NM 87410

District IV
PO Box 2088, Santa Fe, NM 87504-2088

State of New Mexico
Energy, Minerals & Natural Resources Department

OIL CONSERVATION DIVISION
PO Box 2088
Santa Fe, NM 87504-2088

Form C-102
Revised February 21, 1994
Instructions on back
Submit to Appropriate District Office
State Lease - 4 Copies
Fee Lease - 3 Copies

☐ AMENDED REPORT

WELL LOCATION AND ACREAGE DEDICATION PLAT

*API Number 30-045-33619		*Pool Code 71599	*Pool Name BASIN DAKOTA
*Property Code 301301	*Property Name FEDERAL		*Well Number 100B
*OGRID No. 233083	*Operator Name BASIN MINERALS LTD		*Elevation 5769'

¹⁰ Surface Location

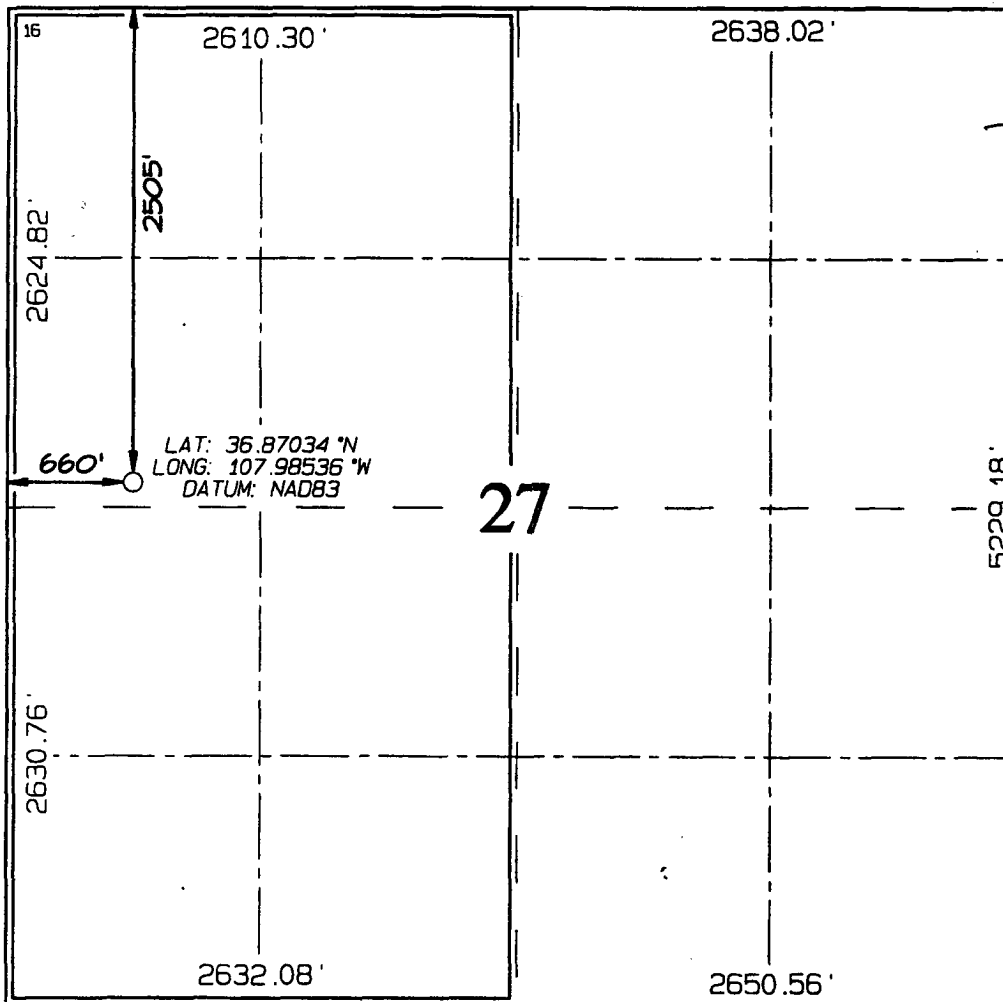

UL or lot no. E	Section 27	Township 31N	Range 11W	Lot Idn	Feet from the 2505	North/South line NORTH	Feet from the 660	East/West line WEST	County SAN JUAN
---------------------------	----------------------	------------------------	---------------------	---------	------------------------------	----------------------------------	-----------------------------	-------------------------------	---------------------------

¹¹ Bottom Hole Location If Different From Surface

UL or lot no.	Section	Township	Range	Lot Idn	Feet from the	North/South line	Feet from the	East/West line	County
---------------	---------	----------	-------	---------	---------------	------------------	---------------	----------------	--------

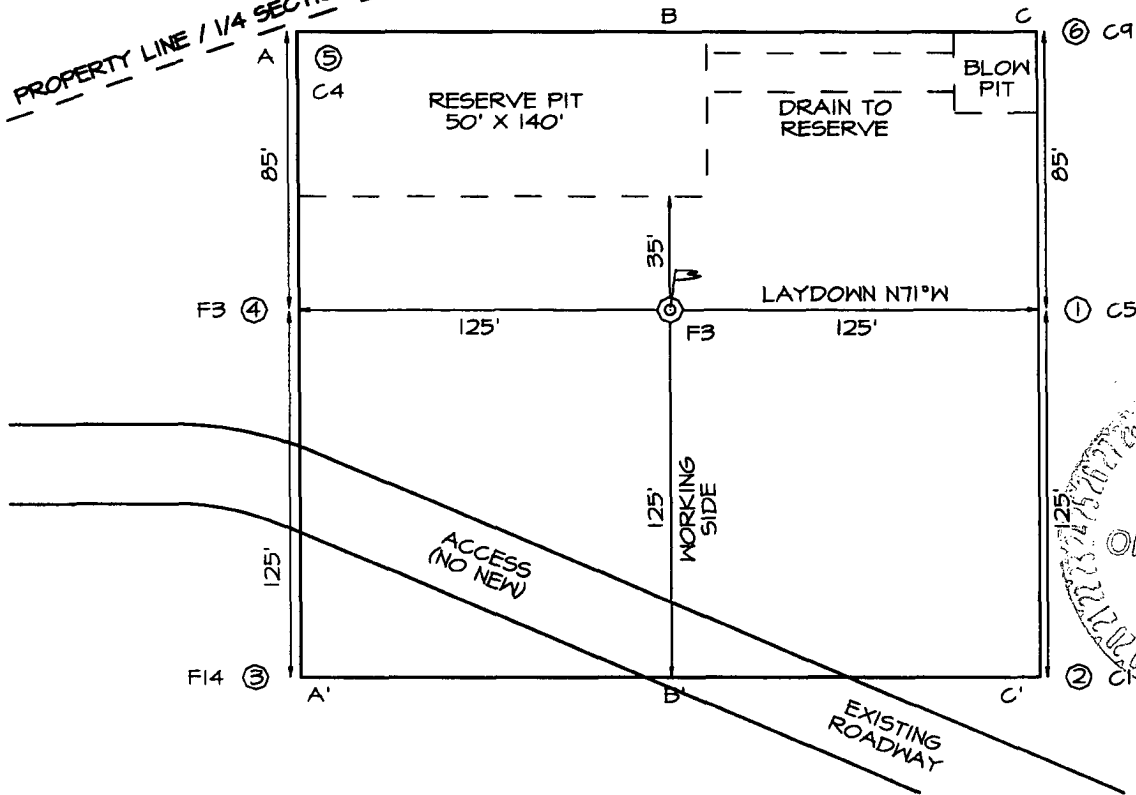
¹² Dedicated Acres 320.00 Acres - (W/2)	¹³ Joint or Infill Y	¹⁴ Consolidation Code	¹⁵ Order No.
--	---	----------------------------------	-------------------------

NO ALLOWABLE WILL BE ASSIGNED TO THIS COMPLETION UNTIL ALL INTERESTS HAVE BEEN CONSOLIDATED
OR A NON-STANDARD UNIT HAS BEEN APPROVED BY THE DIVISION

	<p>¹⁷ OPERATOR CERTIFICATION</p> <p>I hereby certify that the information contained herein is true and complete to the best of my knowledge and belief</p> <p><i>Paul C. Thomas</i> Signature</p> <p>Paul C. Thomas Printed Name</p> <p>AGENT Title</p> <p>2/24/06 Date</p>
	<p>¹⁸ SURVEYOR CERTIFICATION</p> <p>I hereby certify that the well location shown on this plat was plotted from field notes of actual surveys made by me or under my supervision, and that the same is true and correct to the best of my belief</p> <p>Survey Date: JANUARY 13, 2006</p> <p>Signature and Seal of Professional Surveyor</p> <p></p> <p>JASON C. EDWARDS Certificate Number 15269</p>

BASIN MINERALS LTD FEDERAL #100
2505' FNL & 660' FWL, SECTION 27, T31N, R11W
NMPM, SAN JUAN COUNTY, NEW MEXICO
GROUND ELEVATION: 5769'

PROPERTY LINE / 1/4 SECTION LINE



LATITUDE: 36.87034° N
 LONGITUDE: 107.98536° W
 DATUM: NAD1983

